



Date: May 27, 2008  
 To: Dr. J. Brian Sarvis, Superintendent  
 From: David J. Hetyonk, Director of Facilities and Operations  
 Subject: Approval of Proposal from American Modular Systems for the Purchase of a Re-locatable Restroom for Washington Elementary School

Bond Fund Consent Agenda: XX

Background:

As part of Measure I-98 and the Mitchum settlement, reconfiguration of the portable classrooms to provide accessibility is required. In addition to the re-configuration, additional restrooms are required as both the former and re-configured locations are too far from existing restrooms. Elementary district developer fees were identified for this project in the developer fee report presented to the board on January 8, 2008.

Plan:

The district has requested the attached proposal from American Modular Systems and staff recommends approval for the purchase) of a re-locatable restroom utilizing the piggyback clause of the Santa Rita Union School District Bid.

Fiscal Impact:

\$130,536 (base bid plus alternates 1, 2, 3 & 4)

Funding Source:

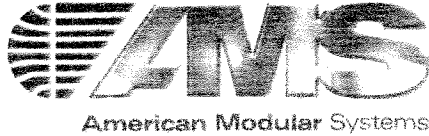
Elementary developer fees (fund 25)

Recommendation:

Notwithstanding Sections 20111 and 20112 of the Public Contract Code, the Governing Board of the Santa Barbara School Districts has determined to be in the best interests of the districts to grant approval of the purchase of a re-locatable restroom pursuant to a "piggyback" clause in the Santa Rita Union School District Bid, 2006 DSA Facilities Supply Contract, awarded on December 15, 2005 for which the originating district has complied with all competitive bidding requirements.

<b>Attachment(s)?</b>	<b>X</b>	<b>Yes (if so, please attach)</b>	<b>No</b>	<b>Powerpoint</b>	<b>Overhead</b>	<b>Consultant</b>
-----------------------	----------	-----------------------------------	-----------	-------------------	-----------------	-------------------

Adams Elementary School Cesar Chavez Charter School Cleveland Elementary School Franklin Elementary School	Harding Elementary School McKinley Elementary School Monroe Elementary School Open Alternative School	Peabody Charter School Roosevelt Elementary School Santa Barbara Charter School Santa Barbara Community Academy Washington Elementary School	Goleta Valley Junior High School La Colina Junior High School La Cumbre Junior High School Santa Barbara Junior High School	Dos Pueblos High School La Cuesta Continuation High School San Marcos High School Santa Barbara High School
---	--	--	--	--



May 14, 2008

Santa Barbara School District  
720 Santa Barbara Street  
Santa Barbara, CA 93101  
Attn: Dave Weniger

RECEIVED  
MAY 16 2008  
BUSINESS/OPERATIONS  
SBSD

**RE: DSA Steel Rigid Frame Single Story Restroom Building for Washington Elementary**

Dear Dave,

American Modular Systems is pleased to provide a proposal for the above referenced project. Our pricing is based upon Santa Barbara School District utilizing the provisions of the Santa Rita Union School District Piggyback Contract and the inclusions as noted below for a Single Story Restroom Building, the requested District upgrades and the KBZ floor plan attached.

**(1) 12' x 40' Boy/Girl/Double Staff Single Story Restroom Building (480 sf), steel rigid frame construction, 20 lb. roof load, 80 mph exposure, FOB Santa Barbara, CA**

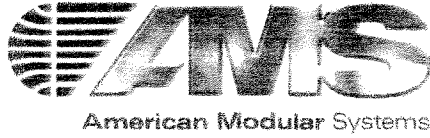
**Total with tax \$ 110,220.00**

**Alternates**

- |   |                                    |  |
|---|------------------------------------|--|
| 1. 2" concrete slurry                               | <b>Total with tax \$ 1,680.00</b>  | yes <input type="checkbox"/> no <input type="checkbox"/> |
| 2. painted sheetrock ceiling in lieu of t-grid      | <b>Total with tax \$ 3,900.00</b>  | yes <input type="checkbox"/> no <input type="checkbox"/> |
| 3. 6"x 6" ceramic tile floor with 6" tile base      | <b>Total with tax \$ 13,536.00</b> | yes <input type="checkbox"/> no <input type="checkbox"/> |
| 4. access well with 1" metal grate (spacing @ 1/2") | <b>Total with tax \$ 1,200.00</b>  | yes <input type="checkbox"/> no <input type="checkbox"/> |

**Inclusions**

- below grade concrete foundation system
- non-rated interior walls
- light weight concrete subfloors
- single phase electrical panel stubbed through side wall
- **Brocar surface mount stainless steel diaper changing station- model 100SSE-SM (install in staff restroom)**
- transportation
- installation
- standard craning
- supervision
- engineering and design services
- roof and wall insulation
- t-grid ceiling with 2x4 ceiling tile
- T-8 lights
- standard exterior lights
- boy-girl restrooms, (2) staff restrooms as per KBZ plan
- 3/4 plywood subroof and standing seam metal decking
- 2' overhang with enclosed soffits and exterior MDO siding (grooves 8" OC)
- upgraded door hardware (Santa Barbara spec)
- American Standard fixtures with infrared automatic controls



- wall mounted toilets
- floor drains (1 per each student restroom)
- FRP interior restroom walls
- ceiling exhaust fans
- solid plastic partitions, including full height continuous aluminum channel brackets for attaching all solid plastic toilet partition panels and screens to walls and pilasters
- plastic pilaster shoes at all solid plastic toilet partitions
- coved sheet vinyl flooring in restrooms
- (1) GFI duplex receptacle in each staff restroom
- Bobrick 3888 toilet paper dispenser (1 per HDC stall)
- Bobrick 2888 toilet paper dispenser (1 per non-HDC stall)
- Bradley surface mounted electric hand dryers (1-per restroom)

**Note:** Prices will be adjusted when plans, specification requests, and scope are finalized. Prices are valid for 30 days.

#### **Estimated Schedule**

May 29, 2008	Purchase Order, Letter of intent, or signed proposal
Late June 2008	Submit drawings to Architect for DSA approval
August 2008	Begin construction with DSA approved drawings
Aug-Sept 2008	Begin below grade concrete foundations
Sept 2008	Delivery and Substantial completion
Sept-Oct 2008	Project Complete

#### **Concrete Foundation Exclusions**

Site demolition, import/export soil, surveying, site improvements, underground hazards, crawl space drainage, foundation pad excavation, backfilling, access/vent well. (**see alt's**)

#### **Exclusions**

- DSA plan fees
- DSA inspection fees
- adequate vehicle/trades access
- site preparation and plans showing grades, benchmarks, setbacks, finish floor height, etc.
- concrete or asphalt flatwork or curbs
- 2" slurry (**see alternate**)
- underground utilities to pad
- over excavation and re-compaction
- landscaping
- utility connections (water, sewer, power, low voltage, gas, etc)
- footings beyond standard PC design
- special craning or unloading, if required
- spoils, asphalt or sod removal
- fire alarm system
- backfill and compaction
- markerboards
- under building pad height



- full time superintendent
- fencing, toilets, job shack, dust control, security, dumpster, storage bin
- temporary and permanent power, water, and phone
- three phase
- sand, prepare, and paint gypboard (**see alternate**)
- removal or repair of unknown underground obstacles
- surveying
- down spout connections to underground system
- low voltage systems, devices, pathways, or connection to site including EMS
- architect fees
- soap and paper dispensers and signage unless noted
- fire sprinklers
- seamless gutters
- master distribution panels
- EMS systems
- electrical connections under building if required
- motion detectors
- wire mold
- metal ramps
- window coverings

**Note:** The omission of any item(s) not listed in the assumed scope and exclusions shall not be construed to be included in this pricing. It shall be the customer's responsibility to determine the scope of work in the plans and specifications.

**Terms**

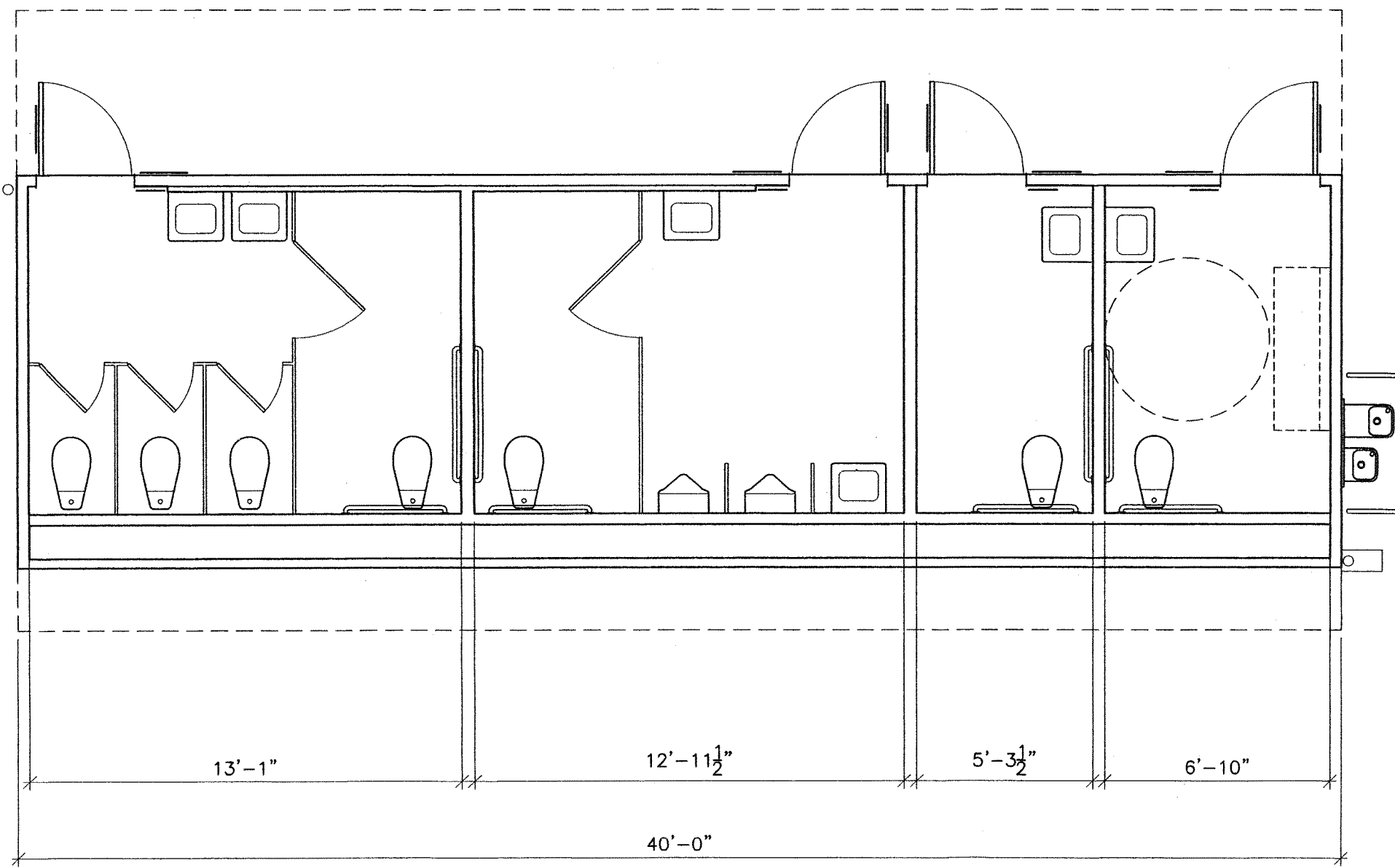
- 60% - due upon completion of manufacturing
- 15% - due upon completion of concrete foundations
- 15% - due upon completion of delivery and installation
- 10% - due upon project acceptance by customer or its agents or upon occupancy by customer

Thank you for your inquiry and for the opportunity to provide pricing for this project.  
**For additional information please call my cell 818.339.1413 or fax 909.981.4257.**

Sincerely,

Jim Wallace  
 Southern California Director of Sales  
 American Modular Systems, Inc.  
 jim.w@americanmodular.com

ACCEPTED \_\_\_\_\_  
 BY \_\_\_\_\_  
 TITLE \_\_\_\_\_  
 DATE \_\_\_\_\_



13'-1"

12'-11 $\frac{1}{2}$ "

5'-3 $\frac{1}{2}$ "

6'-10"

40'-0"

**BROCAR**  
Dedication to Innovation

Literature 200 series documents  
C.O.I.S. TD 400 series documents  
CSI 3 part 600 series documents

**C.O.I.S.**  
**Technical Data Sheet**

CAD  
Operation  
Installation  
Specification

Document #406  
Issued 08-2007

MODEL  
100SSE-SM

Recessed version-  
See document #407

Stock item as of Sept. 07

## Document Index

- Pg. 1 Coversheet  
Pg. 2 CAD Drawings  
Pg. 3-5 Install/CMW (Cleaning, Maintenance, Warranty)



INSTALL FOR ADA COMPLIANCE (CAL UBC Title 2)

## SIDE VIEW OPEN

### - Max Protruding Objects

- o 4.4.1
- o Unit does not exceed 4".

### - Forward Reach

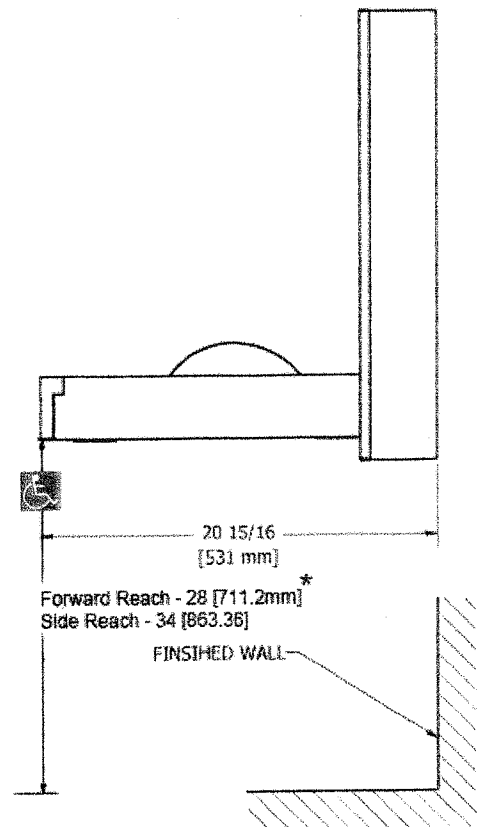
- o 4.2.5
- o Mount bottom of unit between 24" and 28" AFF.  
Contact a special needs coordinator for specific mounting height within this range.

### - Side Reach

- o 4.2.6
- o Mount bottom of unit between 24" and 34" AFF.  
Contact a special needs coordinator for specific mounting height within this range.

### - Operations

- o 4.27.4
- o Compliant



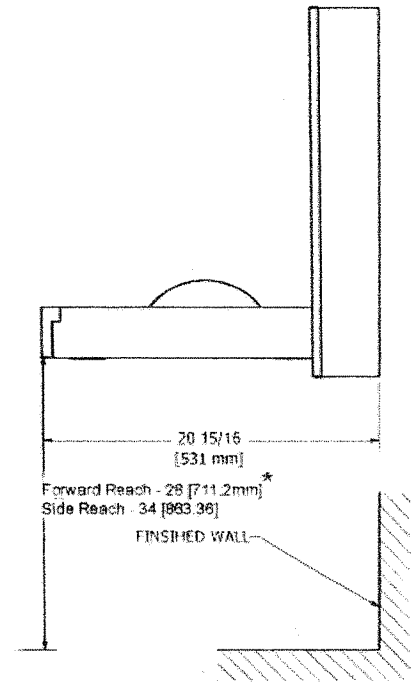
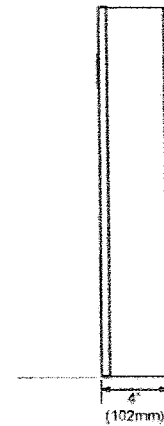
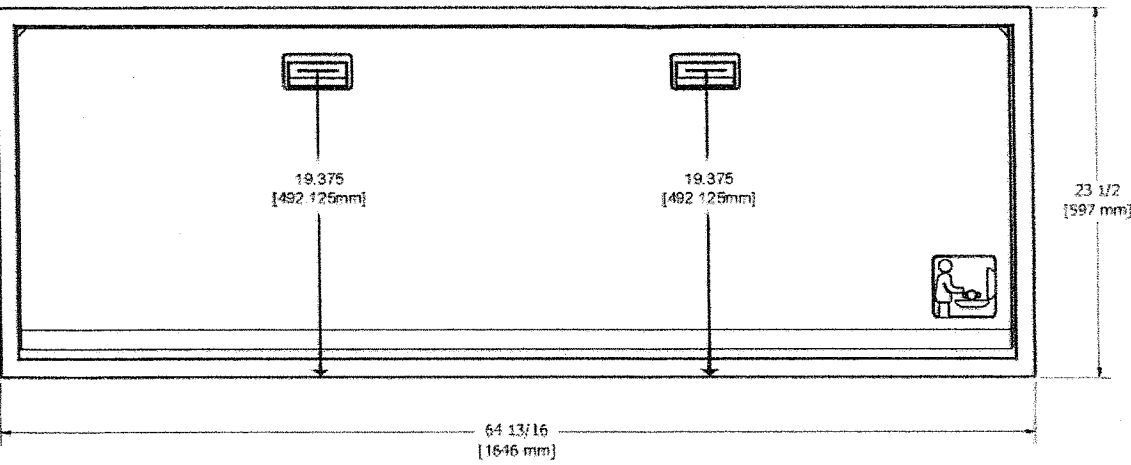
Also available as PDF



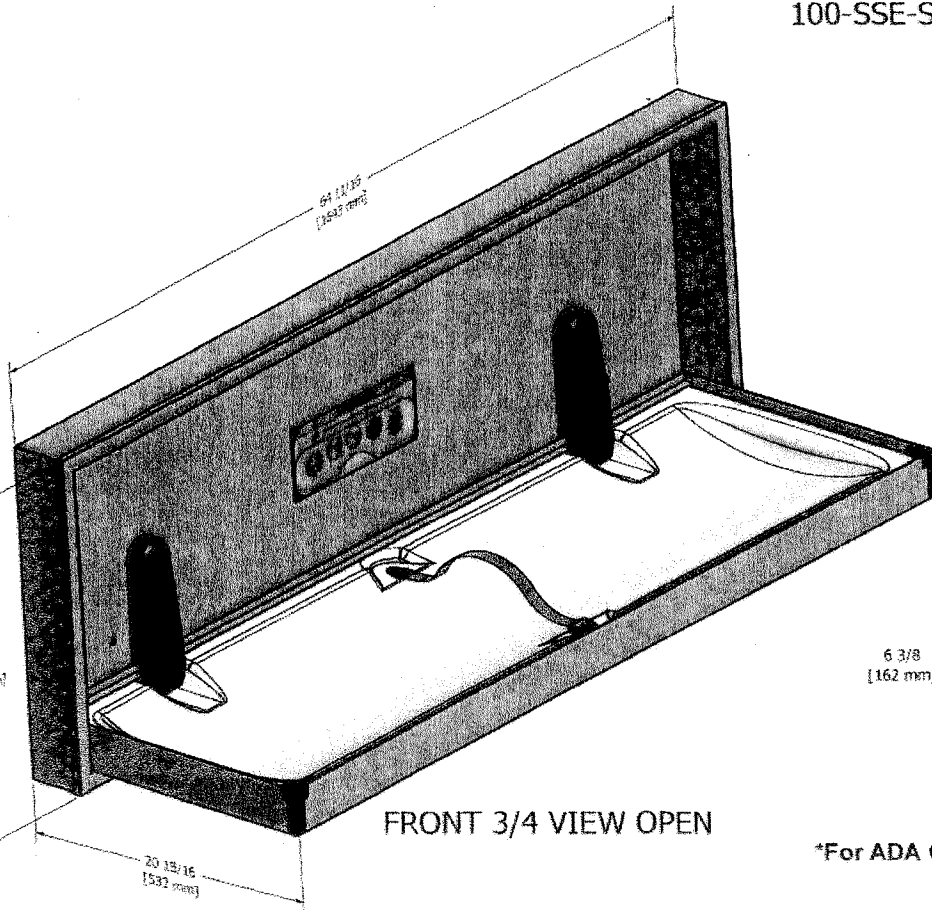
FRONT VIEW CLOSED

SIDE VIEW CLOSED

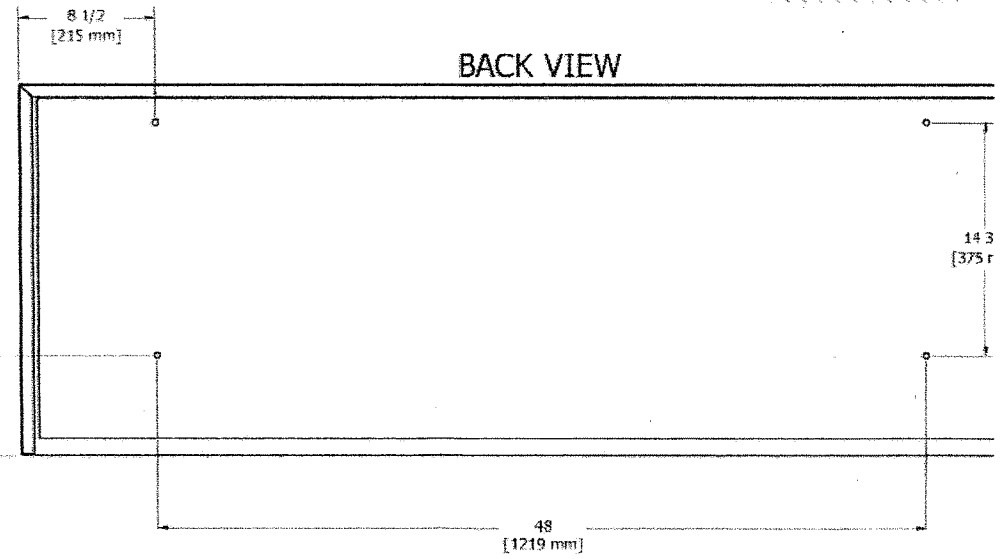
SIDE VIEW OPEN



100-SSE-SM



BACK VIEW



\*For ADA Compliance of either forward or side reach (see cover sheet for further details)