



Date: June 19, 2007  
 To: Dr. J. Brian Sarvis, Superintendent  
 From: Davis Hayden, Director of Research, Evaluation and Technology  
 Subject: Report on English Learner Progress

Conference Item: X (Time Required: 20)

Comment:

This report contains a brief overview of the English Learner Subgroup Self Assessment (ELSSA), demographics of English learners in our school districts, and our response in terms of curriculum and instruction.

<b>Attachment(s)?</b>	<input checked="" type="checkbox"/>	<b>Yes</b> (if so, please attach)	<input type="checkbox"/>	<b>No</b>	<input type="checkbox"/>	<b>Powerpoint</b>	<input type="checkbox"/>	<b>Overhead</b>	<input type="checkbox"/>	<b>Consultant</b>
-----------------------	-------------------------------------	-----------------------------------	--------------------------	-----------	--------------------------	-------------------	--------------------------	-----------------	--------------------------	-------------------

- |                             |                            |                                 |                                  |                                    |
|-----------------------------|----------------------------|---------------------------------|----------------------------------|------------------------------------|
| Adams Elementary School     | Harding Elementary School  | Peabody Charter School          | Goleta Valley Junior High School | Dos Pueblos High School            |
| Cesar Chavez Charter School | McKinley Elementary School | Roosevelt Elementary School     | La Colina Junior High School     | La Cuesta Continuation High School |
| Cleveland Elementary School | Monroe Elementary School   | Santa Barbara Charter School    | La Cumbre Junior High School     | San Marcos High School             |
| Franklin Elementary School  | Open Alternative School    | Santa Barbara Community Academy | Santa Barbara Junior High School | Santa Barbara High School          |
|                             |                            | Washington Elementary School    |                                  |                                    |

**English Learner Report**  
**May 2008**

Michael Gonzalez, Director of Student Services  
and Compliance  
ELSSA report

Dr. Davis Hayden, Director of Research,  
Evaluation, and Technology  
Demographics and Statistics

Dr. Cynthia White, Director of Curriculum and  
Categorical Programs  
Curriculum and Interventions

# English Learner Subgroup Self Assessment (ELSSA)

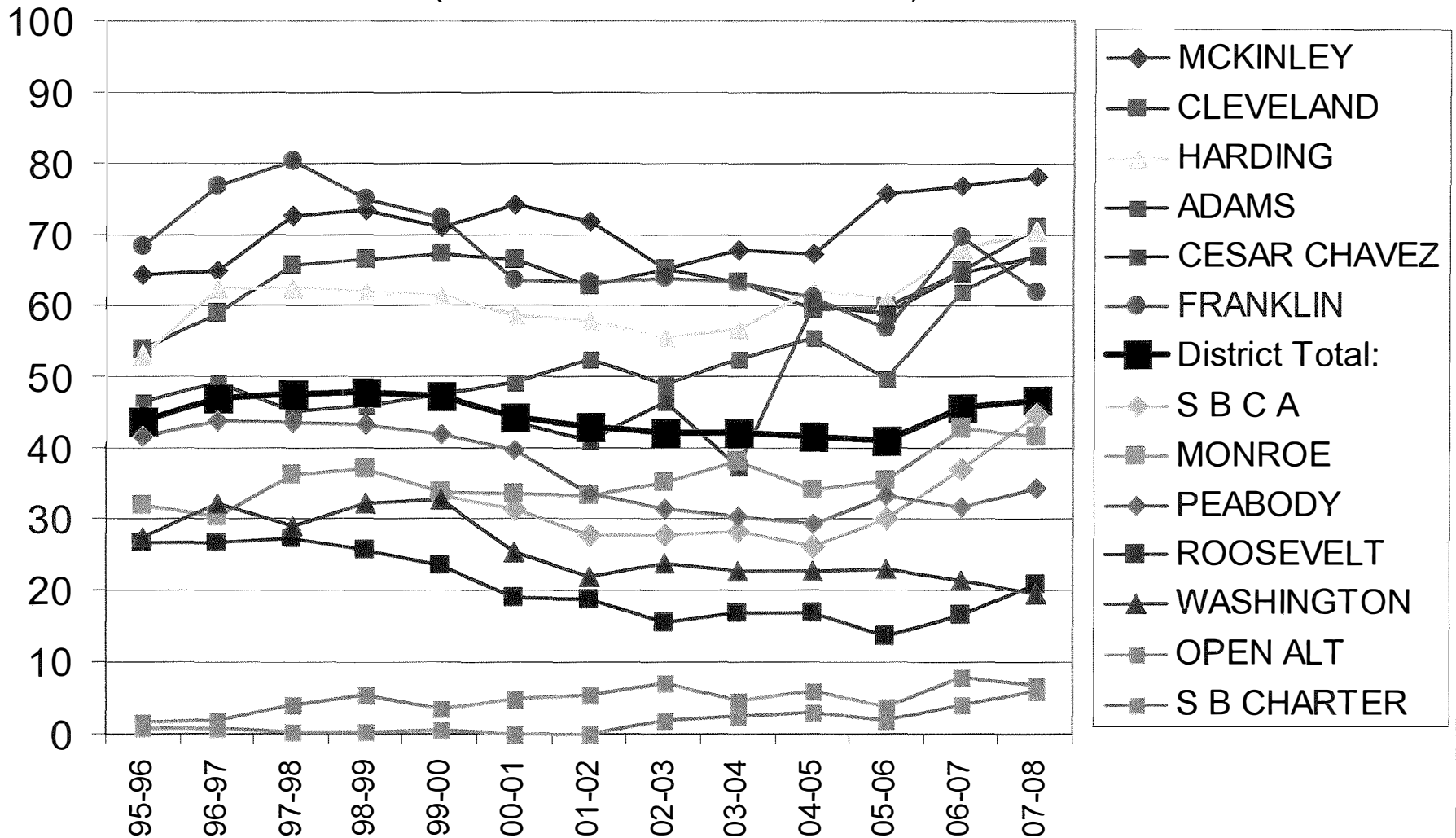
This ELSSA document is designed to serve as a technical assistance tool for local educational agencies (LEA) in analyzing and addressing program services as part of the process of preparing their LEA Plan Addenda for Program Improvement (PI) and for Title III.

Specifically, the document includes information on the three major tasks involved in preparing the Plan Addendum:

1. Identifying data and information that are available on EL student performance and on implementation of those elements of the plan that address EL students.
2. Analyzing the available data and information as a foundation to discern the strengths and weaknesses of the current LEA plan in terms of effectiveness with EL students.
3. Formulating responses to address each element of the Plan Addendum that needs improvement.

# English Learners at Elementary Schools

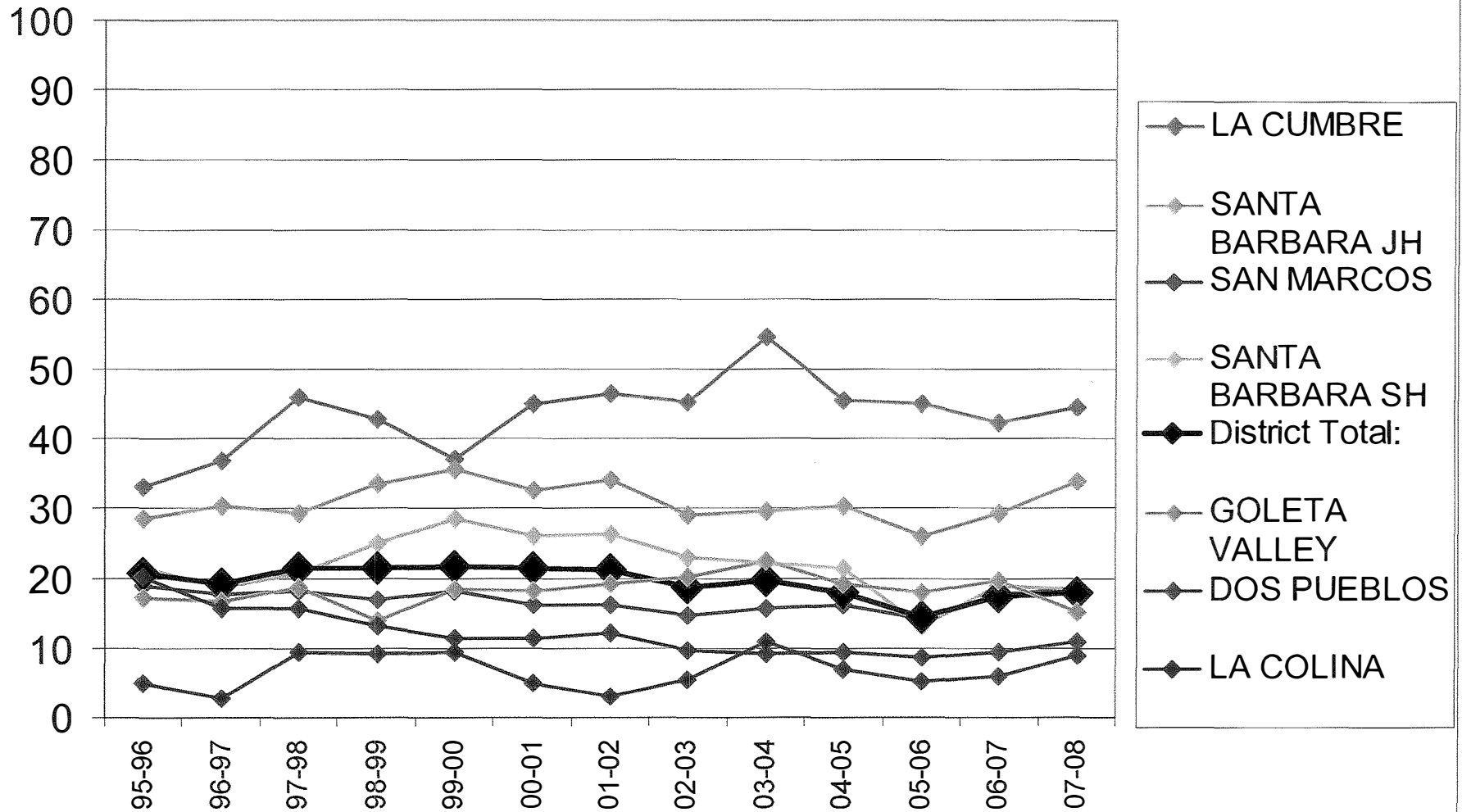
(Percent within each school)



CDE Data Quest except for 07-08 which is from Aeries

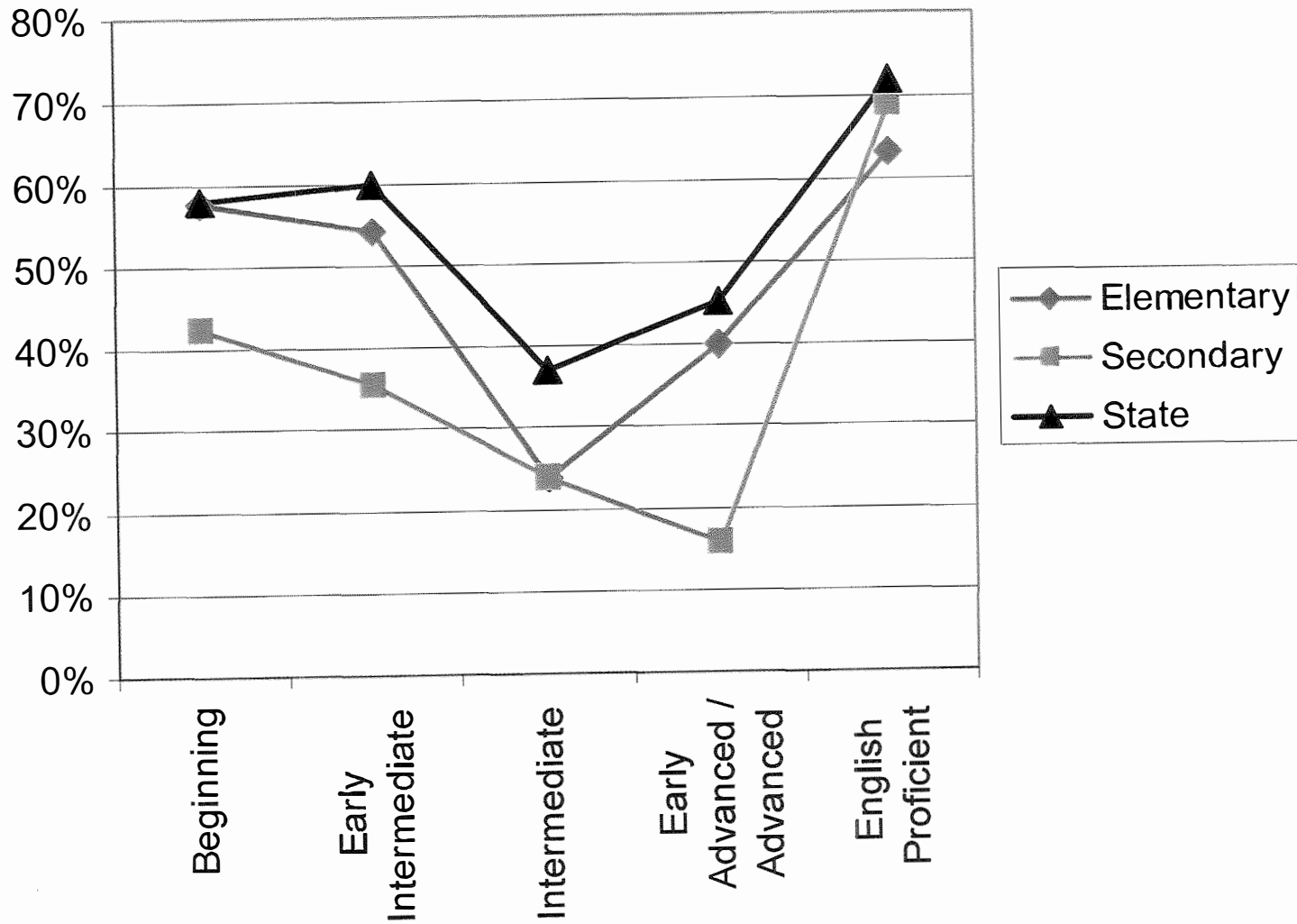
# English Learners at Secondary Schools

(Percent within each school)

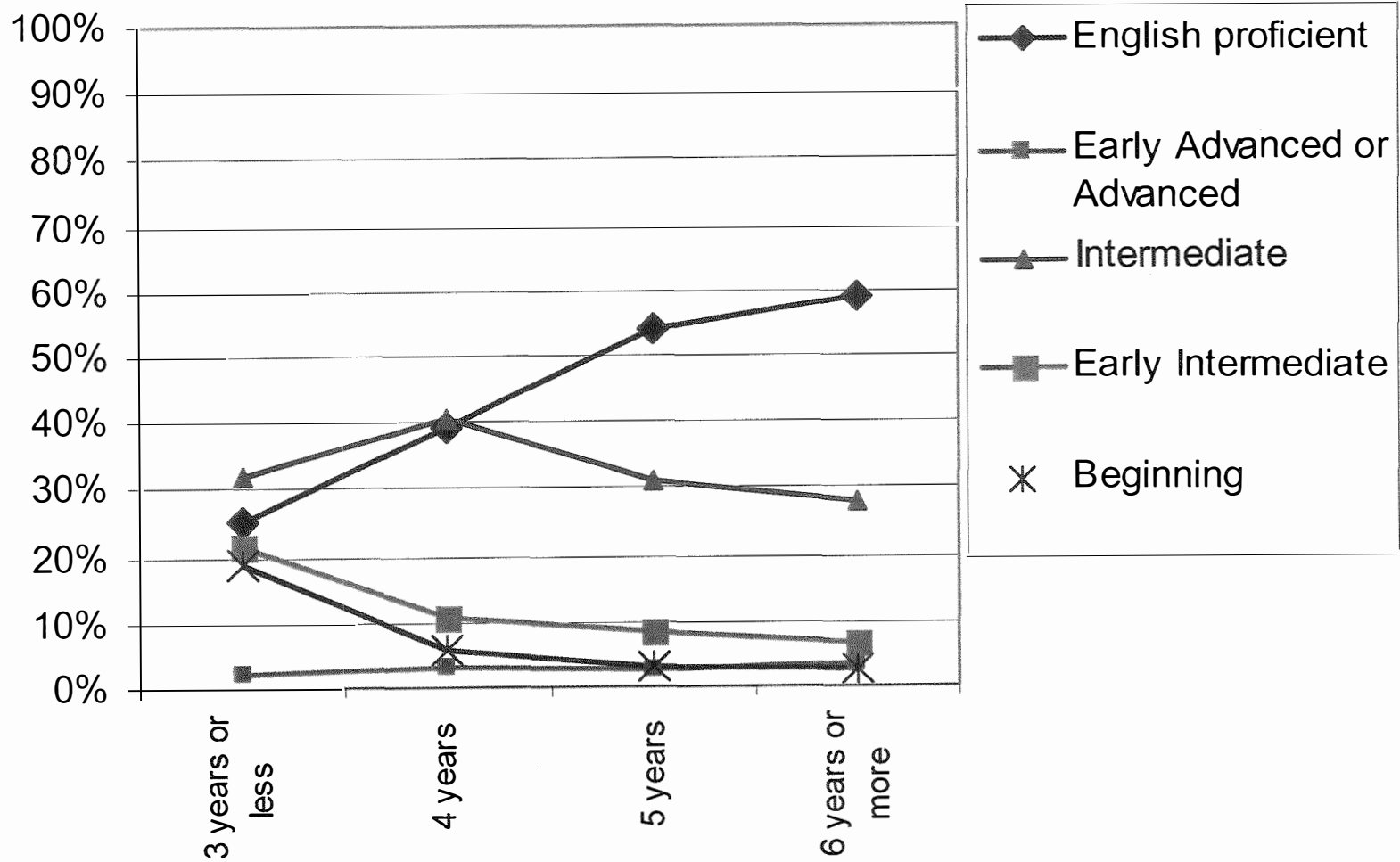


CDE Data Quest except for 07-08 which is from Aeries

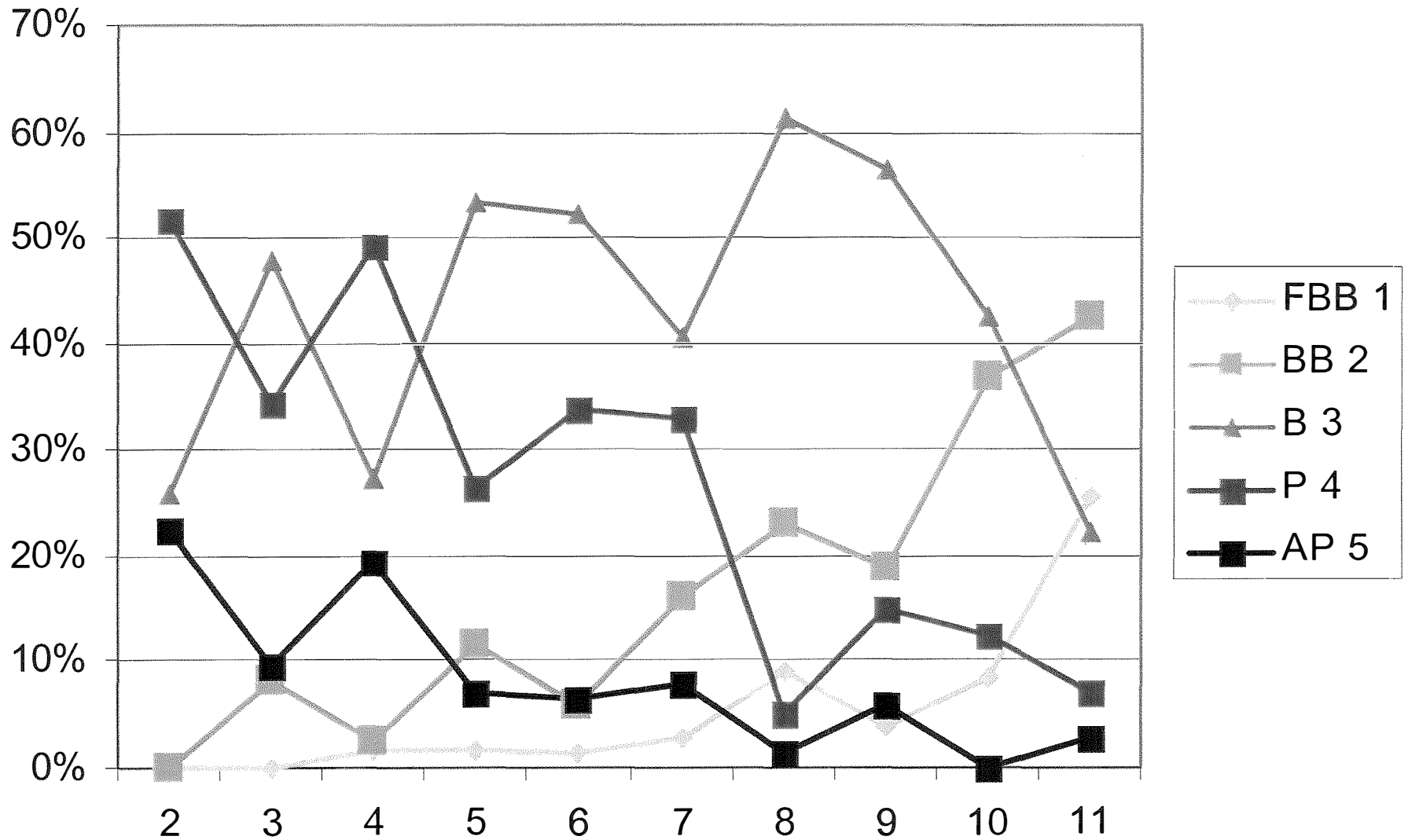
### How are EL students at each level of the CELDT meeting their growth target?



## How are EL students performing on CELDT based on the length of time they have been in U.S. schools?

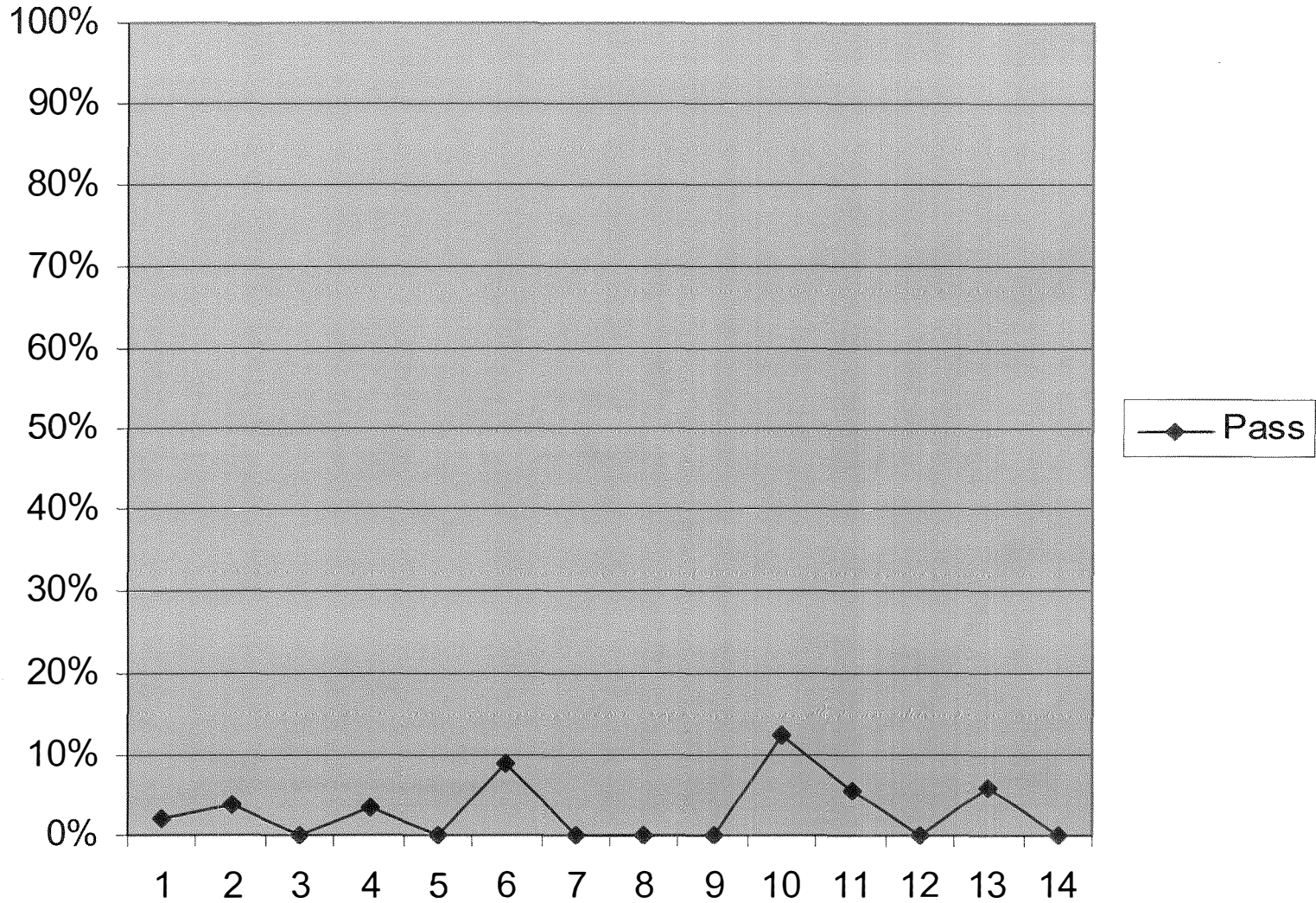


## Performance Level on CST ELA



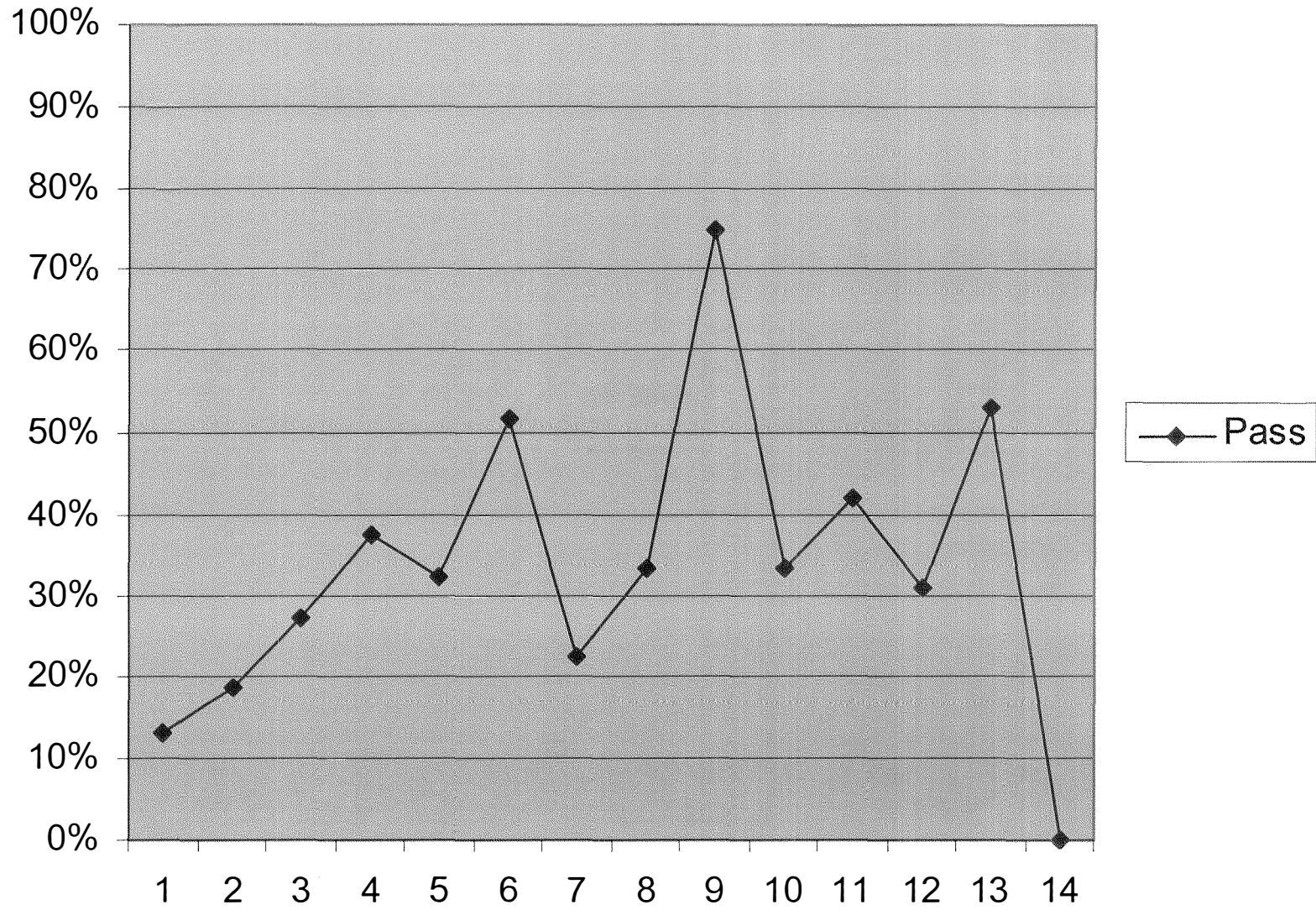
# ELs Passing CAHSEE by Years in District

NCLB (Pass = 380)

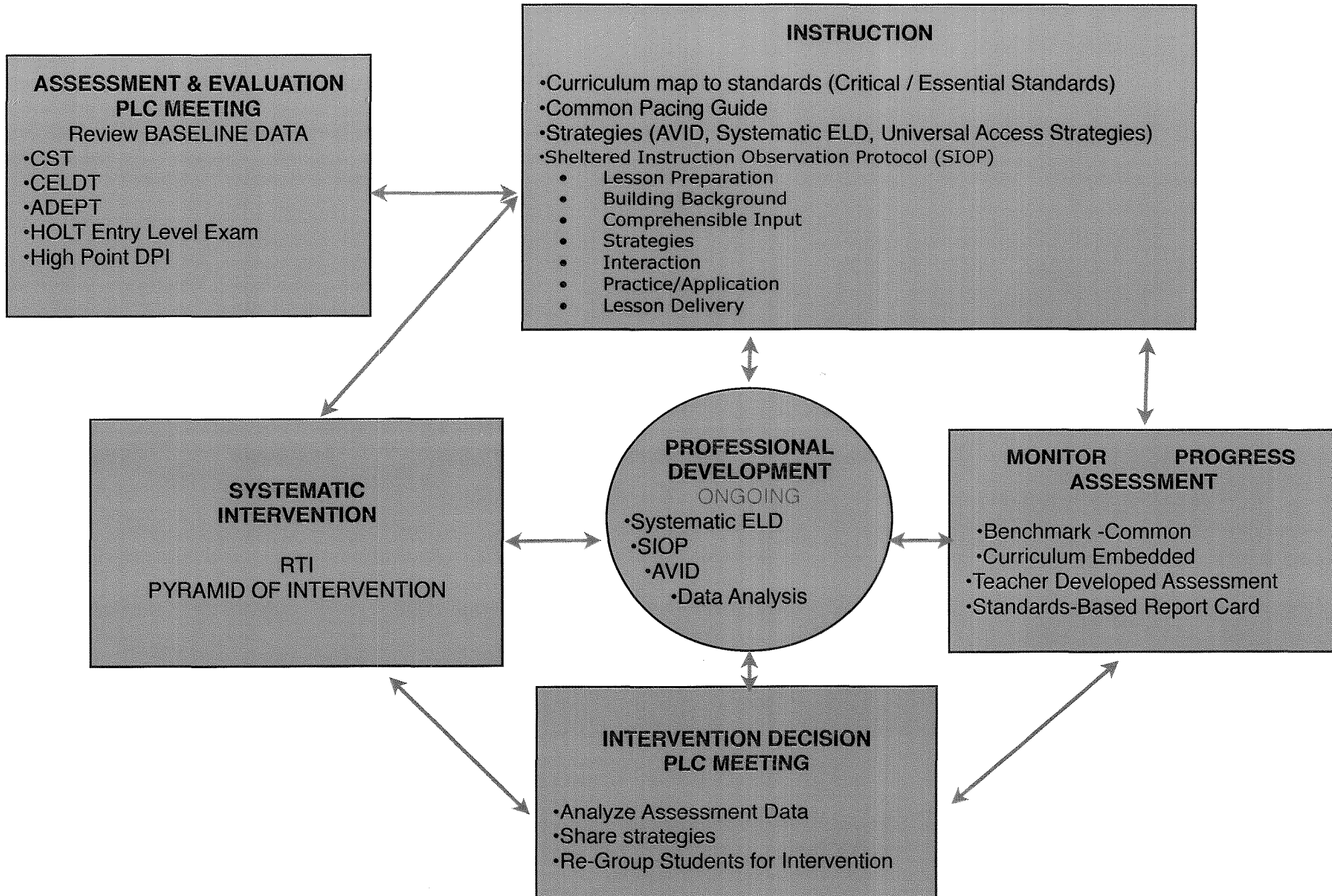


# ELs Passing CAHSEE (GRAD) by Years in District

California (Pass = 350)



# DATA DRIVEN INSTRUCTION



LA CUMBRE JUNIOR HIGH SCHOOL  
PYRAMID OF INTERVENTIONS  
2007-2008

