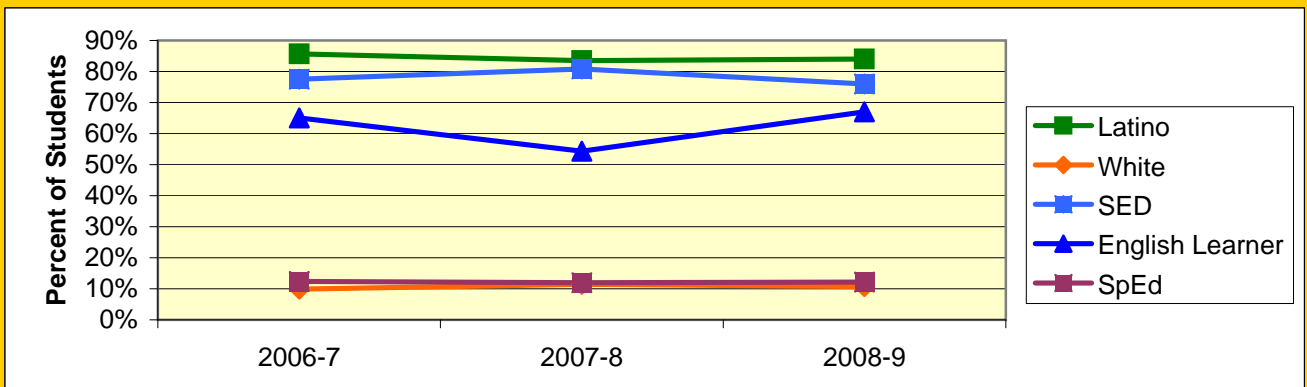
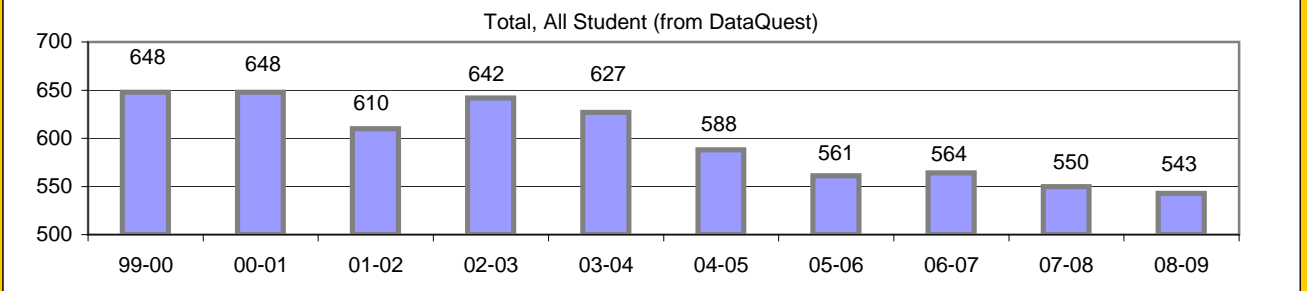


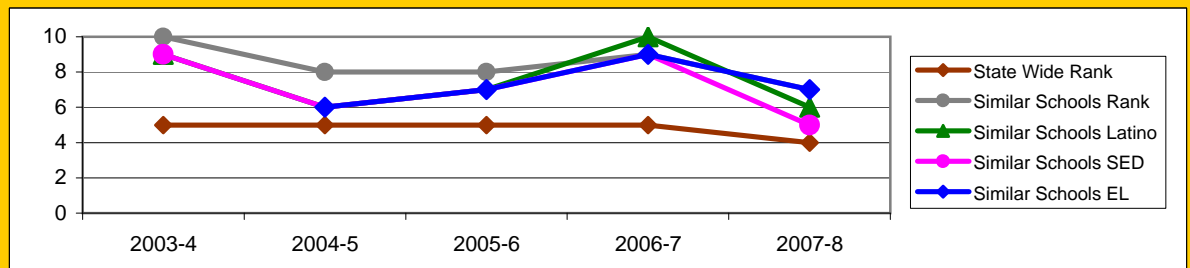
## Board Focus Goals: Adams Elementary (20) - May 2009

Demographics (K-6, 0809 Aeries)	Total	Female	Male	Latino	White	SED	English Learner	SpEd
Number	531	276	255	447	57	403	356	65
Percent of Total		52.0%	48.0%	84.0%	10.7%	76.0%	67.0%	12.2%



### Achieve a State Similar School Ranking of 8 or Higher (scale = 1-10)

	State Wide Rank	Similar Schools Rank	Similar Schools Latino	Similar Schools White	Similar Schools SED	Similar Schools EL	Similar Schools Disab
2003-4	5	10	9	NA	9	NA	NA
2004-5	5	8	6	NA	6	6	NA
2005-6	5	8	7	NA	7	7	NA
2006-7	5	9	10	NA	9	9	NA
2007-8	4	7	6	NA	5	7	NA



**Exceed Federal Adequate Yearly Progress (AYP) Accountability Goals** (Blue = Not enough students, Bold/underline/italic = Made by adjustment, Red = Did not pass)

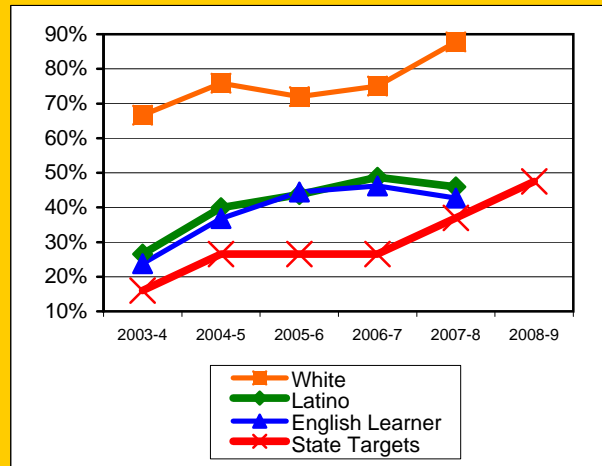
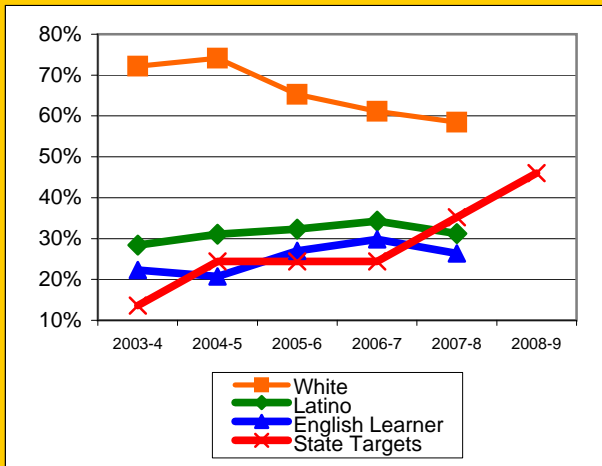
English Language Arts (ELA): Percent Proficient or Higher	State Targets	Schoolwide	Latino	White	Socio-Econ Disadv	English Learner	Stud with Disab
2003-4	13.6%	38.6%	28.4%	72.2%	28.5%	22.3%	9.8%
2004-5	24.4%	39.1%	31.1%	74.1%	28.6%	20.7%	5.9%
2005-6	24.4%	37.8%	32.3%	65.3%	29.9%	27.0%	<u>8.3%</u>
2006-7	24.4%	37.4%	34.3%	61.1%	32.2%	29.8%	12.2%
2007-8	35.2%	<u>34.7%</u>	31.2%	58.5%	29.5%	26.4%	11.8%
2008-9	46.0%						
2009-10	56.8%						

**Mark 1**

Math: Percent Proficient or Higher	State Targets	Schoolwide	Latino	White	Socio-Econ Disadv	English Learner	Stud with Disab
2003-4	16.0%	36.1%	26.5%	66.6%	28.9%	23.8%	11.4%
2004-5	26.5%	46.5%	39.9%	75.9%	38.5%	36.8%	4.5%
2005-6	26.5%	47.5%	43.7%	72.0%	41.5%	44.5%	<u>13.1%</u>
2006-7	26.5%	51.7%	48.7%	75.0%	47.7%	46.2%	18.4%
2007-8	37.0%	50.5%	45.9%	87.8%	45.2%	42.7%	21.6%
2008-9	47.5%						
2009-10	58.0%						

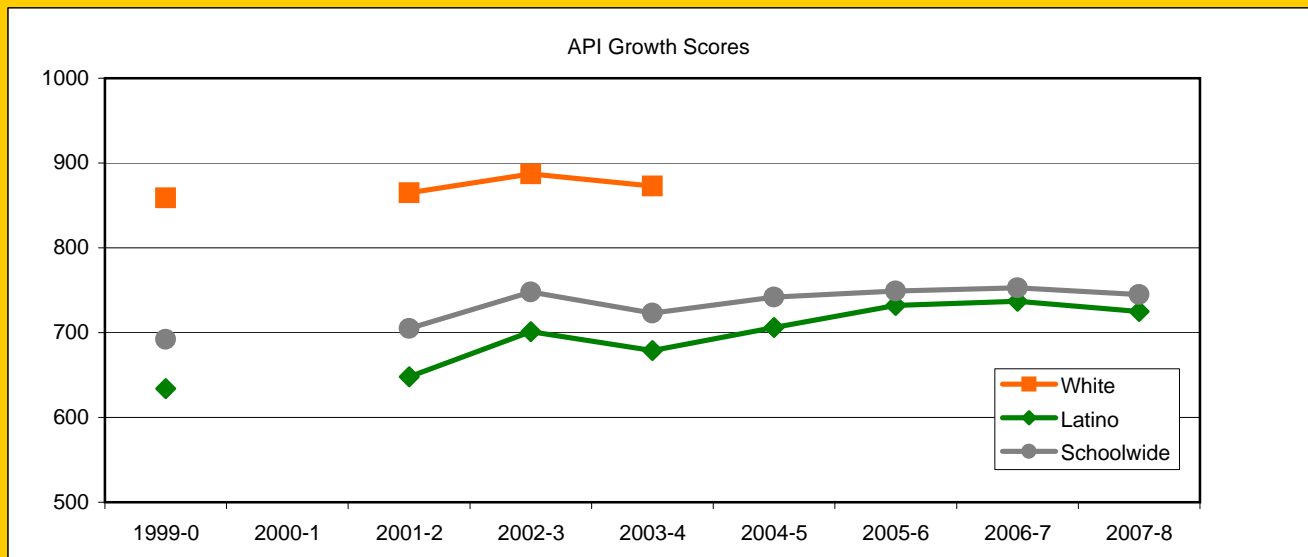
ELA

MATH



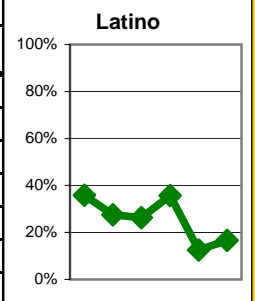
### Exceed State Academic Performance Index (API) Growth Goals

	Schoolwide		Latino		White	
	Base	Growth/ Goal Met	Base	Growth/ Goal Met	Base	Growth/ Goal Met
2003-4	725	723 Not Met	675	679 Met	872	873 Met
2004-5	726	742 Met	682	706 Met		
2005-6	742	749 Met	706	732 Met		
2006-7	749	753 NotMet	732	737 Met		
2007-8	766	745 NotMet	751	725 NotMet		
2008-9	742		724			



### Increase Participation Across Demographic Spectrum in Advanced Courses

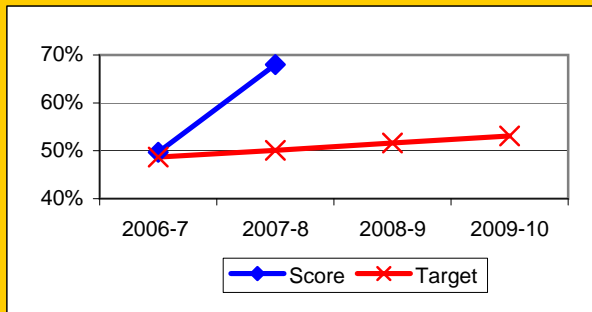
GATE (percent of all GATE students)	Latino		White		All Others	
	Number	Percent	Number	Percent	Number	Percent
2003-4	14	35.9%	20	51.3%	5	12.8%
2004-5	8	27.6%	14	48.3%	7	24.1%
2005-6	5	26.3%	12	63.2%	2	10.5%
2006-7	5	35.7%	8	57.1%	1	7.1%
2007-8	1	12.5%	7	87.5%	0	0.0%
2008-9	1	16.7%	5	83.3%	0	0.0%
2009-10						



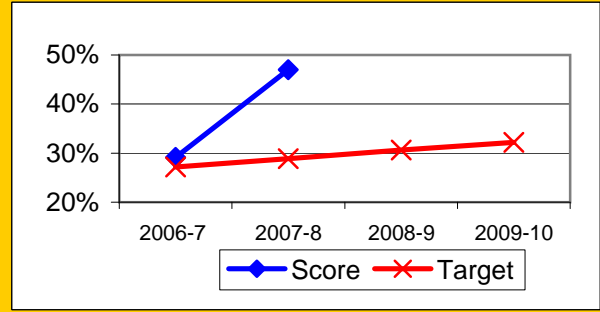
## Progress on English Learners Gaining One Proficiency Level Annually and Attaining English Language Proficiency

	Gained one Level on CELDT		Gained English Proficiency		
	Target	Score	Target	Score	
2003-4	51.0%		30.0%		
2004-5	51.5%	62.5%	30.7%	38.6%	
2005-6	52.0%	68.3%	31.4%	46.5%	
2006-7	48.7%	49.7%	27.2%	29.1%	New Norms
2007-8	50.1%	68.0%	28.9%	47.0%	
2008-9	51.6%		30.6%		
2009-10	53.1%		32.2%		

Gained One Level On CELDT

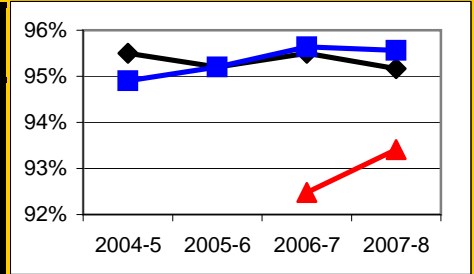


Attained English Proficiency



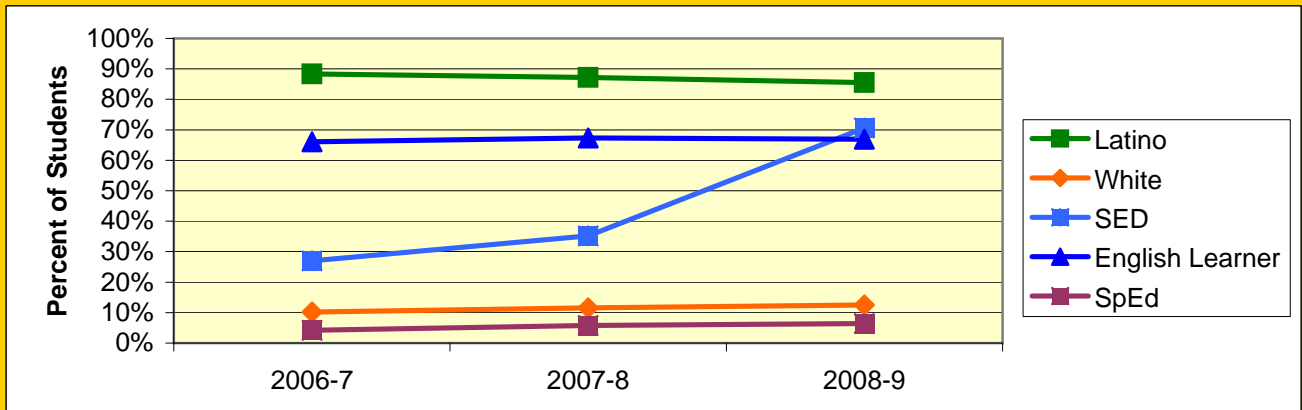
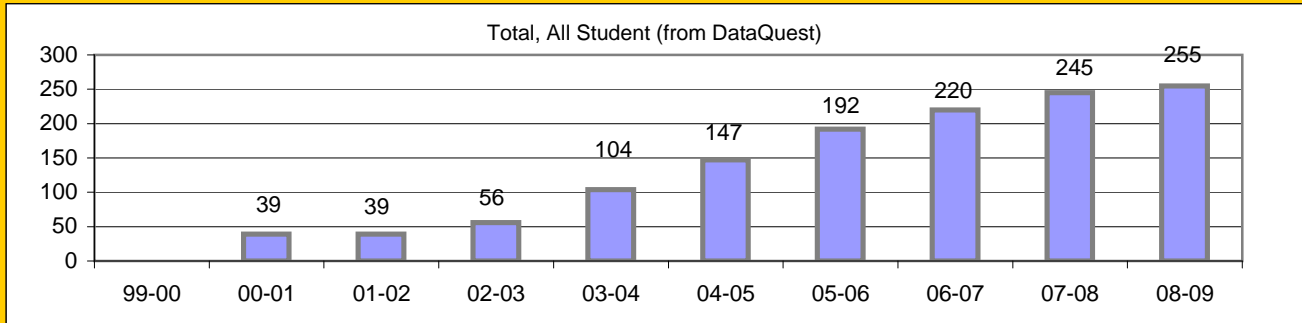
## Increase Efforts to Enhance Revenue

Attendance (Percent over year)	Lowest Month	Whole Year	District
2004-5		95.5%	94.9%
2005-6		95.2%	95.2%
2006-7	92.5%	95.5%	95.6%
2007-8	93.4%	95.2%	95.6%
2008-09			



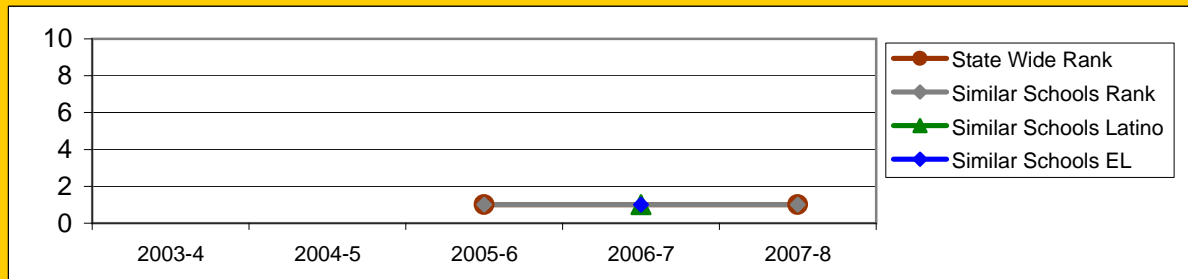
# Board Focus Goals: Cesar Chavez Elementary (32) - May 2009

Demographics (K-6, 0809 Aeries)	Total	Female	Male	Latino	White	SED	English Learner	SpEd
Number	248	133	115	212	31	175	166	16
Percent of Total		53.6%	46.4%	85.5%	12.5%	70.6%	66.9%	6.5%



## Achieve a State Similar School Ranking of 8 or Higher (scale = 1-10)

	State Wide Rank	Similar Schools Rank	Similar Schools Latino	Similar Schools White	Similar Schools SED	Similar Schools EL	Similar Schools Disab
2003-4			NA	NA	NA	NA	NA
2004-5			NA	NA	NA	NA	NA
2005-6	1	1	NA	NA	NA	NA	NA
2006-7	1	1	1	NA	NA	1	NA
2007-8	1	1	NA	NA	NA	NA	NA

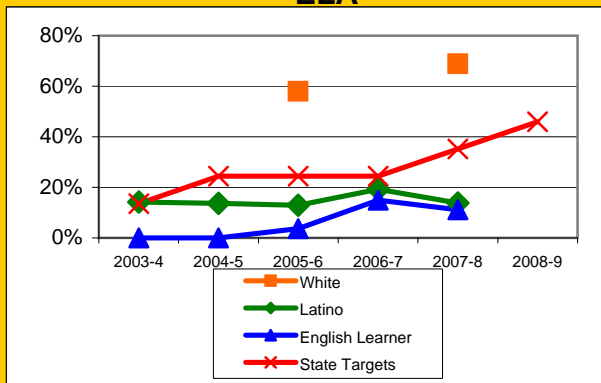


**Exceed Federal Adequate Yearly Progress (AYP) Accountability Goals** (Blue = Not enough students, Bold/underline/italic = Made by adjustment, Red = Did not pass

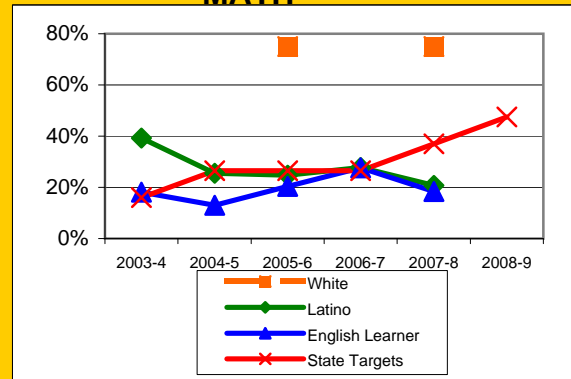
English Language Arts (ELA): Percent Proficient or Higher	State Targets	Schoolwide	Latino	White	Socio-Econ Disadv	English Learner	Stud with Disab	
2003-4	13.6%	21.8%	14.2%		4.0%	0.0%		
2004-5	24.4%	<u>17.2%</u>	13.7%		6.7%	0.0%		
2005-6	24.4%	17.9%	12.9%	58.0%	0.0%	3.7%		Mark 1
2006-7	24.4%	24.6%	<u>19.3%</u>		15.8%	<u>15.0%</u>		
2007-8	35.2%	20.0%	13.8%	68.8%	5.3%	11.2%	9.1%	Mark 1
2008-9	46.0%							
2009-10	56.8%							

Math: Percent Proficient or Higher	State Targets	Schoolwide	Latino	White	Socio-Econ Disadv	English Learner	Stud with Disab	
2003-4	16.0%	46.8%	39.2%		36.0%	18.1%		
2004-5	26.5%	<u>31.0%</u>	25.5%		22.2%	13.0%		
2005-6	26.5%	31.1%	<u>24.7%</u>	75.0%	10.0%	20.4%		Mark 1
2006-7	26.5%	33.3%	27.8%		19.4%	27.6%		
2007-8	37.0%	27.3%	20.8%	75.0%	12.3%	18.4%	36.4%	Mark 1
2008-9	47.5%							
2009-10	58.0%							

ELA

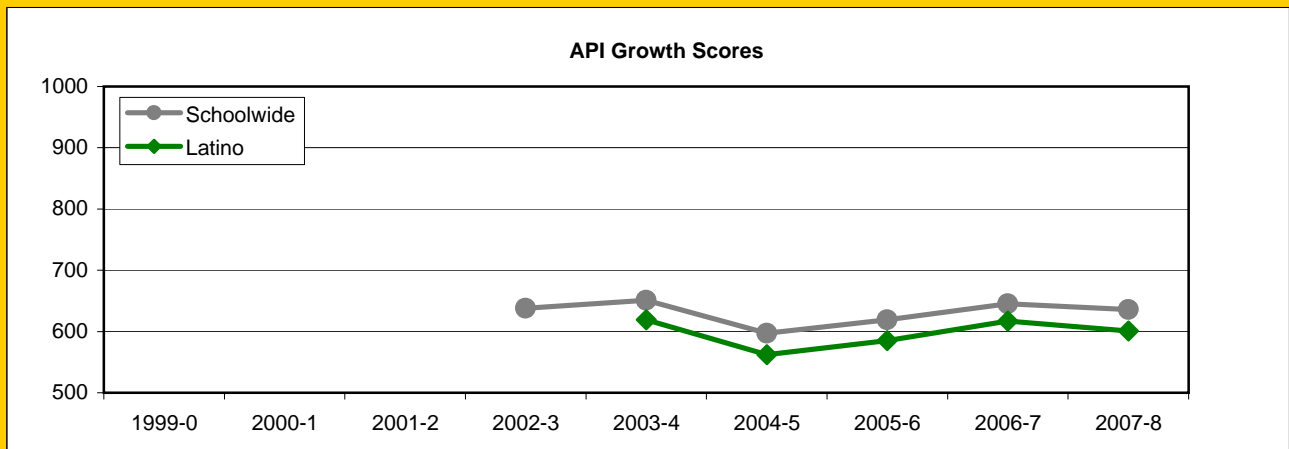


MATH



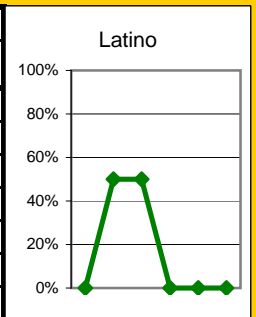
### Exceed State Academic Performance Index (API) Growth Goals

	Schoolwide		Latino		White	
	Base	Growth/ Goal Met	Base	Growth/ Goal Met	Base	Growth/ Goal Met
2003-4	640	651 met		619		
2004-5	651	597 Not Met		562		
2005-6	597	619 Met	562	585 Met		
2006-7	620	645 Met	587	617 Met		
2007-8	655	636 NotMet	627	601 NotMet		
2008-9	641		608			



### Increase Participation Across Demographic Spectrum in Advanced Courses

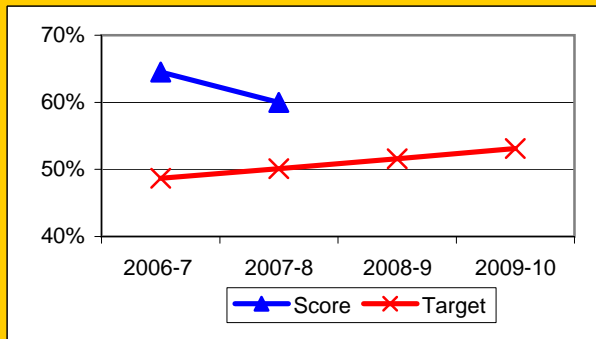
GATE (percent of all GATE students)	Latino		White		All Others	
	Number	Percent	Number	Percent	Number	Percent
2003-4	0	0.0%	1	100.0%	0	0.0%
2004-5	1	50.0%	1	50.0%	0	0.0%
2005-6	1	50.0%	1	50.0%	0	0.0%
2006-7	0	0.0%	0	0.0%	0	0.0%
2007-8	0	0.0%	1	100.0%	0	0.0%
2008-9	0	0.0%	1	100.0%	0	0.0%
2009-10						



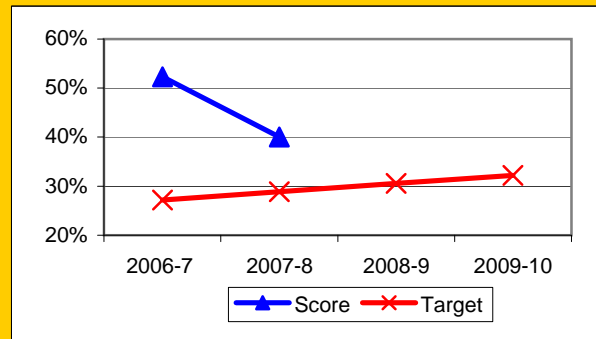
## Progress on English Learners Gaining One Proficiency Level Annually and Attaining English Language Proficiency

	Gained one Level on CELDT		Gained English Proficiency		
	Target	Score	Target	Score	
2003-4	51.0%		30.0%		
2004-5	51.5%	57.4%	30.7%		
2005-6	52.0%		31.4%		
2006-7	48.7%	64.5%	27.2%	52.3%	New Norms
2007-8	50.1%	60.0%	28.9%	40.0%	
2008-9	51.6%		30.6%		
2009-10	53.1%		32.2%		

Gained One Level On CELDT

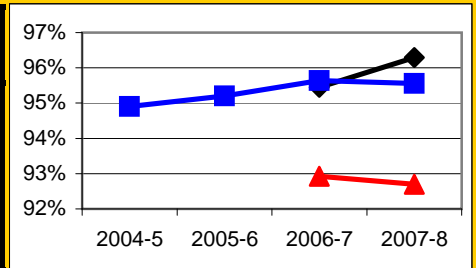


Attained English Proficiency



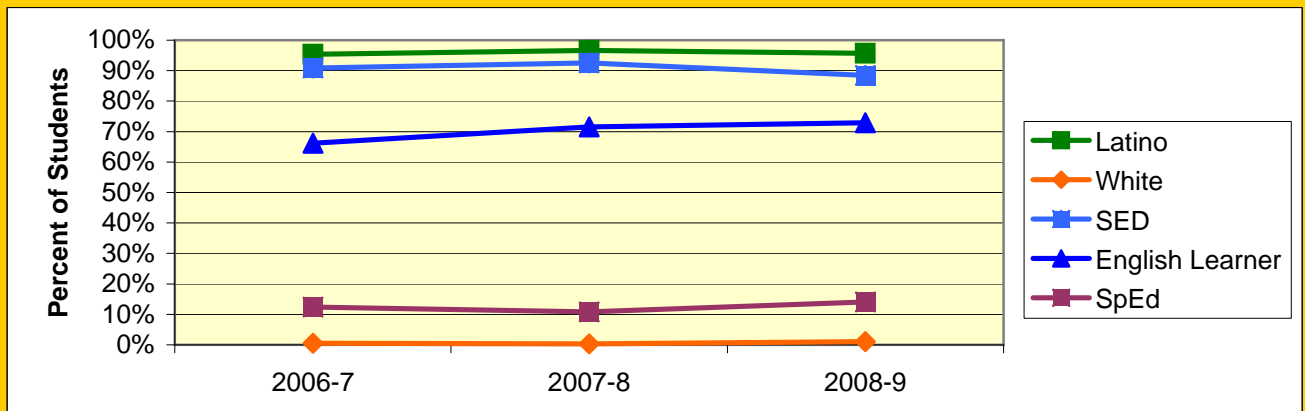
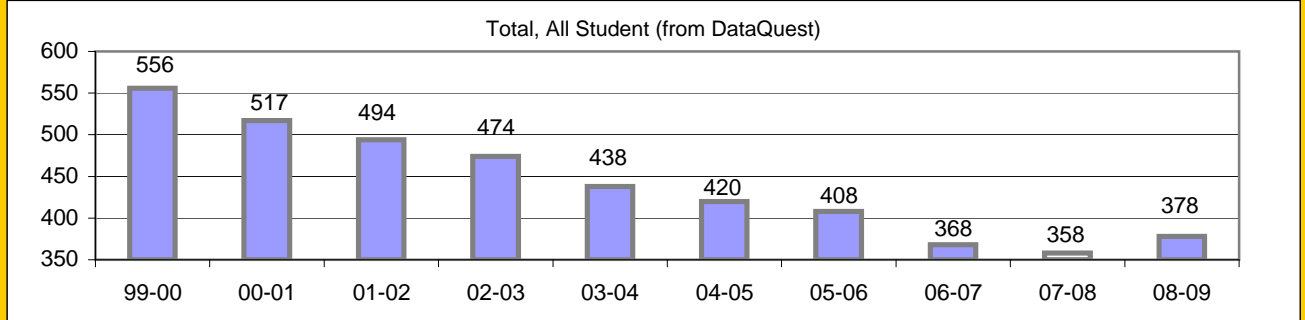
## Increase Efforts to Enhance Revenue

Attendance (Percent over year)	Lowest Month	Whole Year	District
2004-5			94.9%
2005-6			95.2%
2006-7	92.9%	95.5%	95.6%
2007-8	92.7%	96.3%	95.6%
2008-9			



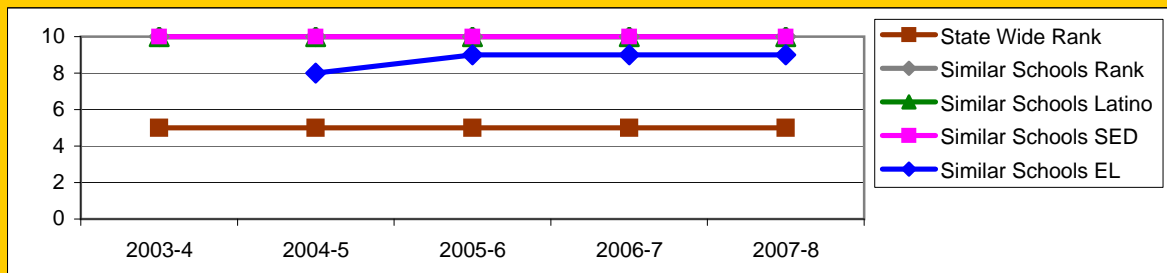
## Board Focus Goals: Cleveland Elementary (21) - May 2009

Demographics (K-6, 0809 Aeries)	Total	Female	Male	Latino	White	SED	English Learner	SpEd
Number	391	187	204	374	4	346	285	55
Percent of Total		47.8%	52.2%	95.7%	1.0%	88.5%	72.9%	14.1%



### Achieve a State Similar School Ranking of 8 or Higher (scale = 1-10)

	State Wide Rank	Similar Schools Rank	Similar Schools Latino	Similar Schools White	Similar Schools SED	Similar Schools EL	Similar Schools Disab
2003-4	5	10	10	NA	10	NA	NA
2004-5	5	10	10	NA	10	8	NA
2005-6	5	10	10	NA	10	9	NA
2006-7	5	10	10	NA	10	9	NA
2007-8	5	10	10	NA	10	9	NA



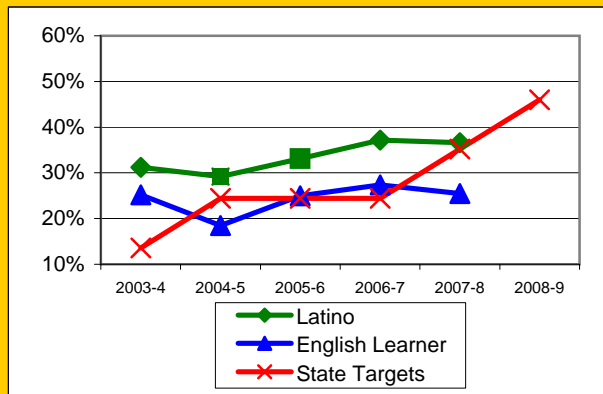
**Exceed Federal Adequate Yearly Progress (AYP) Accountability Goals** (Blue = Not enough students, Bold/underline/italic = Made by adjustment, Red = Did not pass

English Language Arts (ELA): Percent Proficient or Higher	State Targets	Schoolwide	Latino	White	Socio-Econ Disadv	English Learner	Stud with Disab
2003-4	13.6%	33.2%	31.2%		29.4%	25.2%	4.8%
2004-5	24.4%	29.4%	29.2%		27.0%	18.5%	4.4%
2005-6	24.4%	33.2%	33.1%		32.6%	25.0%	12.8%
2006-7	24.4%	37.4%	37.2%		35.2%	27.4%	18.8%
2007-8	35.2%	36.2%	36.6%		35.8%	25.5%	31.6%
2008-9	46.0%						
2009-10	56.8%						

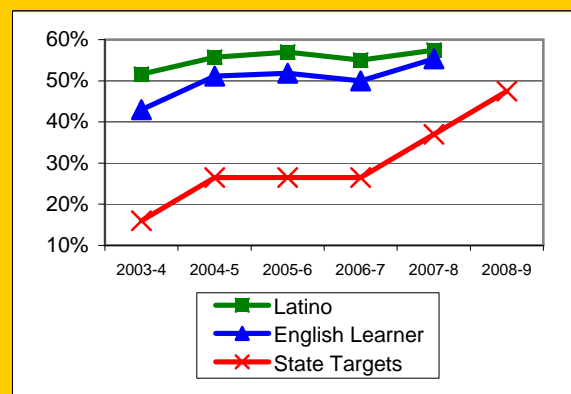
**Mark 1**

Math: Percent Proficient or Higher	State Targets	Schoolwide	Latino	White	Socio-Econ Disadv	English Learner	Stud with Disab
2003-4	16.0%	52.2%	51.6%		48.4%	43.0%	12.5%
2004-5	26.5%	55.6%	55.7%		54.8%	51.1%	9.1%
2005-6	26.5%	56.8%	57.0%		56.8%	51.8%	23.1%
2006-7	26.5%	54.7%	55.0%		53.2%	50.0%	31.3%
2007-8	37.0%	57.4%	57.4%		57.0%	55.3%	44.7%
2008-9	47.5%						
2009-10	58.0%						

**ELA**

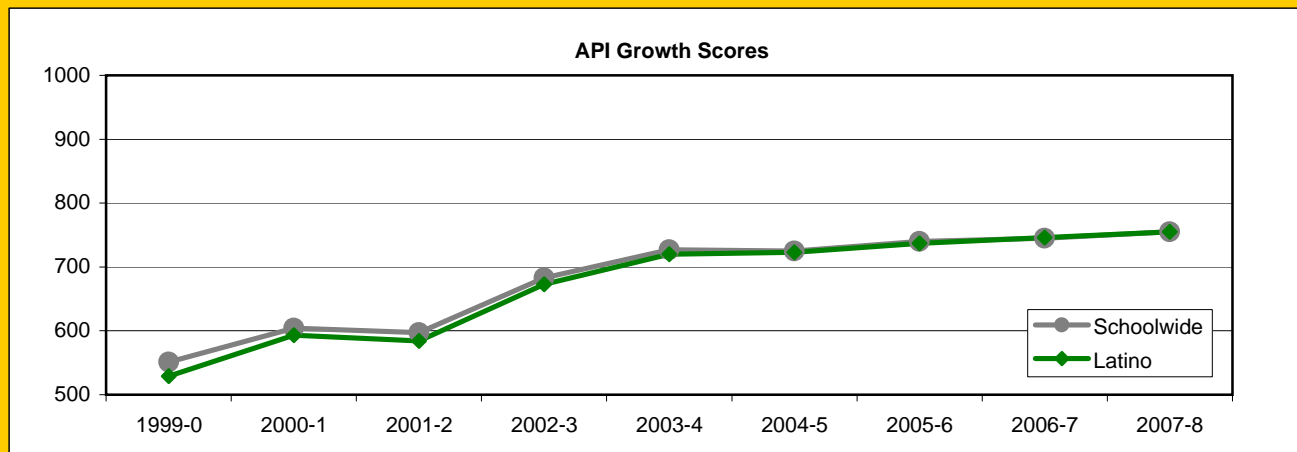


**MATH**



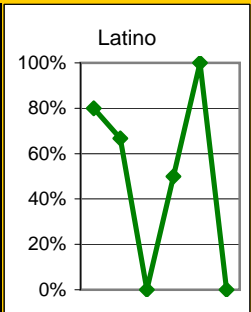
### Exceed State Academic Performance Index (API) Growth Goals

	Schoolwide		Latino		White	
	Base	Growth/ Goal Met	Base	Growth/ Goal Met	Base	Growth/ Goal Met
2003-4	678	727 Met	668	720 Met		
2004-5	729	725 Not Met	721	723 Not Met		
2005-6	725	740 Met	723	737 Met		
2006-7	739	745 Met	737	746 Met		
2007-8	754	755 NotMet	755	755 NotMet		
2008-9	762		762			



### Increase Participation Across Demographic Spectrum in Advanced Courses

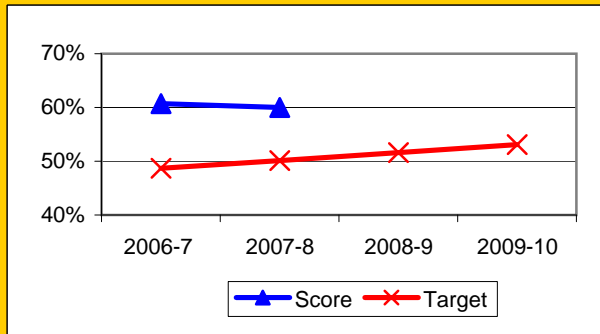
GATE (percent of all GATE students)	Latino		White		All Others	
	Number	Percent	Number	Percent	Number	Percent
2003-4	4	80.0%	0	0.0%	1	20.0%
2004-5	2	66.7%	0	0.0%	1	33.3%
2005-6	0	0.0%	1	100.0%	0	0.0%
2006-7	1	50.0%	1	50.0%	0	0.0%
2007-8	1	100.0%	0	0.0%	0	0.0%
2008-9	0	0.0%	0	0.0%	0	0.0%
2009-10						



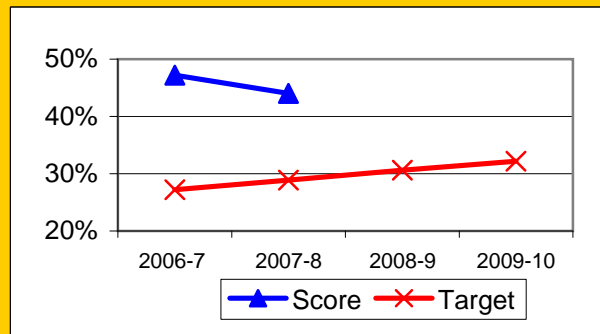
## Progress on English Learners Gaining One Proficiency Level Annually and Attaining English Language Proficiency

	Gained one Level on CELDT		Gained English Proficiency		
	Target	Score	Target	Score	
2003-4	51.0%		30.0%		
2004-5	51.5%	57.1%	30.7%	40.6%	
2005-6	52.0%	58.4%	31.4%	35.4%	
2006-7	48.7%	60.7%	27.2%	47.2%	New Norms
2007-8	50.1%	60.0%	28.9%	44.0%	
2008-9	51.6%		30.6%		
2009-10	53.1%		32.2%		

Gained One Level On CELDT

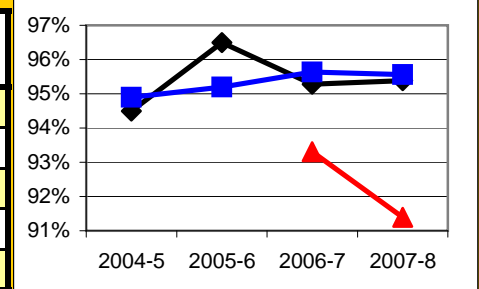


Attained English Proficiency



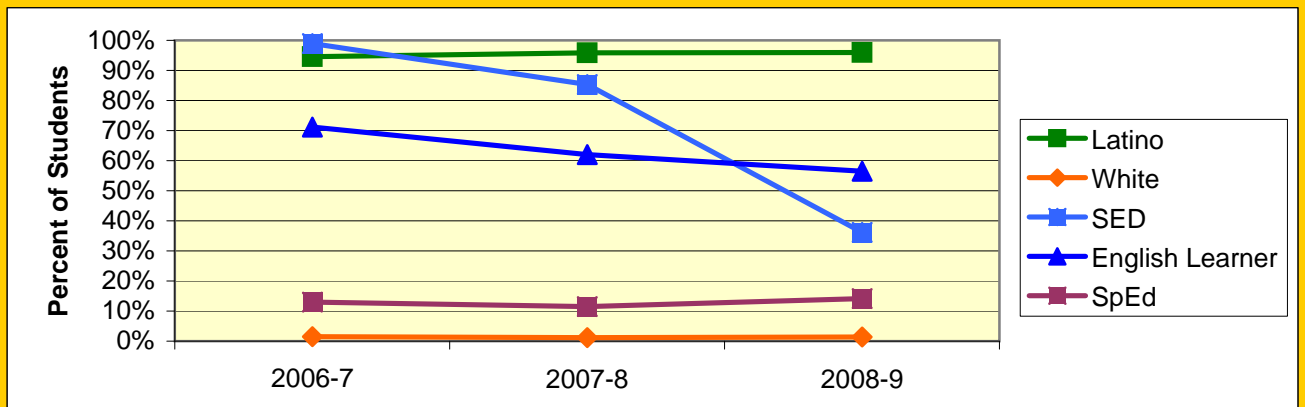
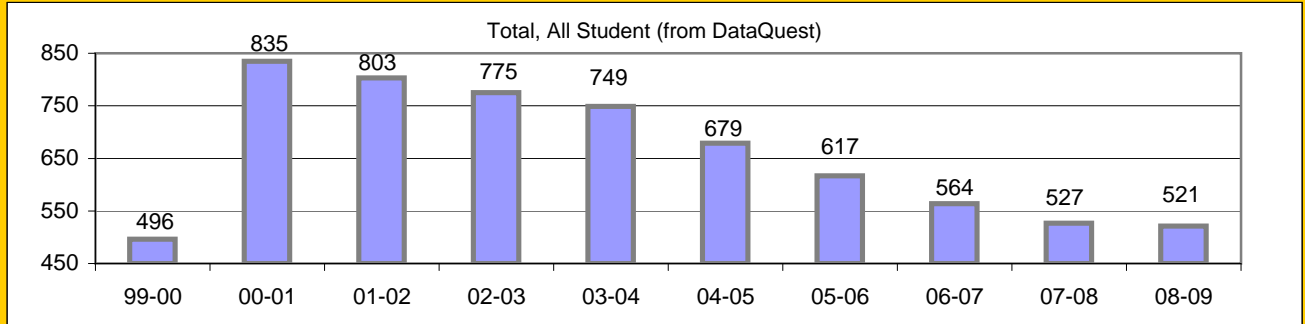
## Increase Efforts to Enhance Revenue

Attendance (Percent over year)	Lowest Month	Whole Year	District
2004-5		94.5%	94.9%
2005-6		96.5%	95.2%
2006-7	93.3%	95.3%	95.6%
2007-8	91.4%	95.4%	95.6%
2008-9			



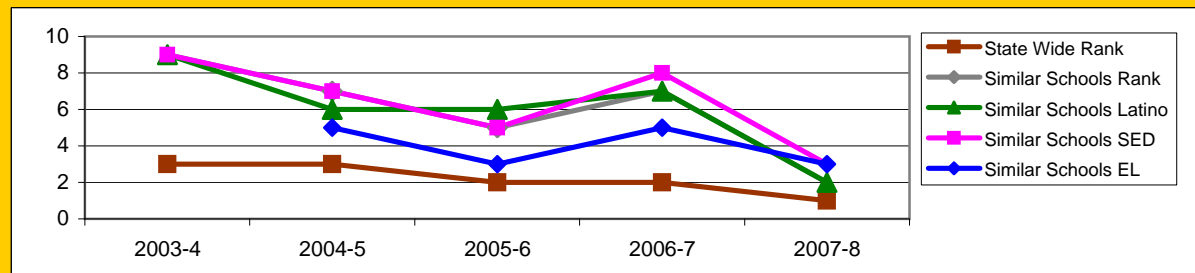
## Board Focus Goals: Franklin Elementary (22) - May 2009

Demographics (K-6, 0809 Aeries)	Total	Female	Male	Latino	White	SED	English Learner	SpEd
Number	517	245	272	496	7	187	292	73
Percent of Total		47.4%	52.6%	95.9%	1.4%	36.2%	56.5%	14.1%



### Achieve a State Similar School Ranking of 8 or Higher (scale = 1-10)

	State Wide Rank	Similar Schools Rank	Similar Schools Latino	Similar Schools White	Similar Schools SED	Similar Schools EL	Similar Schools Disab
2003-4	3	9	9	NA	9	NA	NA
2004-5	3	7	6	NA	7	5	NA
2005-6	2	5	6	NA	5	3	NA
2006-7	2	7	7	NA	8	5	NA
2007-8	1	2	2	NA	3	3	NA

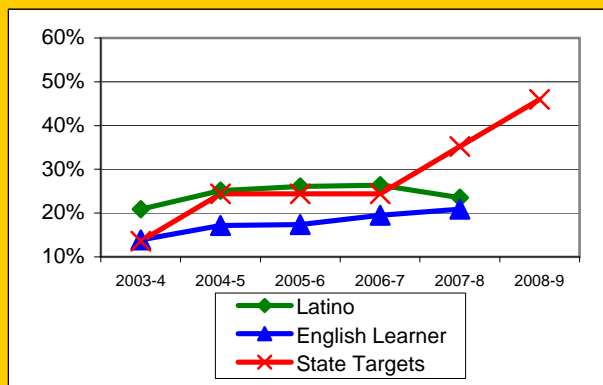


**Exceed Federal Adequate Yearly Progress (AYP) Accountability Goals** (Blue = Not enough students, Bold/underline/italic = Made by adjustment, Red = Did not pass)

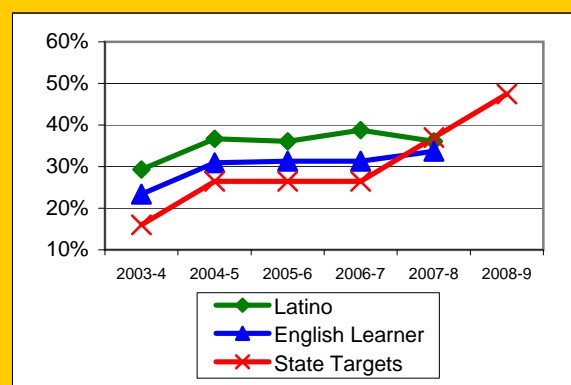
English Language Arts (ELA): Percent Proficient or Higher	State Targets	Schoolwide	Latino	White	Socio-Econ Disadv	English Learner	Stud with Disab	
2003-4	13.6%	21.4%	20.9%		21.5%	13.9%	4.3%	
2004-5	24.4%	25.3%	25.1%		25.3%	17.2%	1.8%	Mark 1
2005-6	24.4%	26.5%	26.1%		26.5%	17.4%	1.9%	Mark 2
2006-7	24.4%	26.3%	26.4%		26.3%	19.5%	7.1%	PI Y1
2007-8	35.2%	24.5%	23.5%		25.1%	20.9%	16.7%	PI Y2
2008-9	46.0%							PI Y3
2009-10	56.8%							

Math: Percent Proficient or Higher	State Targets	Schoolwide	Latino	White	Socio-Econ Disadv	English Learner	Stud with Disab	
2003-4	16.0%	29.7%	29.3%		29.6%	23.4%	15.9%	
2004-5	26.5%	36.4%	36.7%		36.4%	30.9%	0.0%	
2005-6	26.5%	36.7%	36.1%		36.7%	31.3%	13.0%	
2006-7	26.5%	39.1%	38.8%		39.1%	31.3%	8.9%	PI Y1
2007-8	37.0%	36.5%	36.1%		37.0%	33.7%	18.5%	PI Y2
2008-9	47.5%							PI Y3
2009-10	58.0%							

ELA

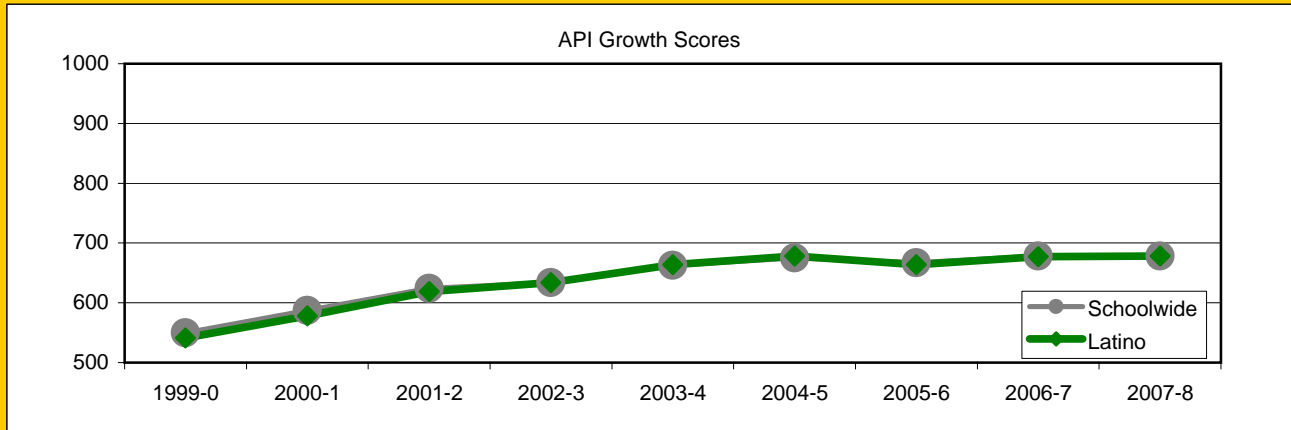


MATH



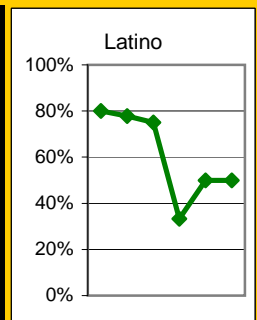
### Exceed State Academic Performance Index (API) Growth Goals

	Schoolwide		Latino		White	
	Base	Growth/ Goal Met	Base	Growth/ Goal Met	Base	Growth/ Goal Met
2003-4	633	663 Met	633	664 Met		
2004-5	666	675 Met	666	678 Met		
2005-6	675	667 Not Met	678	664 Not Met		
2006-7	669	678 Met	666	677 Met		
2007-8	697	678 NotMet	695	678 NotMet		
2008-9	677		676			



### Increase Participation Across Demographic Spectrum in Advanced Courses

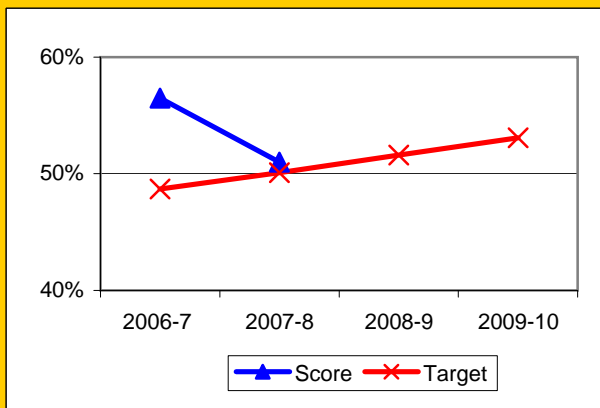
GATE (percent of all GATE students)	Latino		White		All Others	
	Number	Percent	Number	Percent	Number	Percent
2003-4	8	80.0%	2	20.0%	0	0.0%
2004-5	7	77.8%	2	22.2%	0	0.0%
2005-6	3	75.0%	1	25.0%	0	0.0%
2006-7	1	33.3%	1	33.3%	1	33.3%
2007-8	1	50.0%	1	50.0%	0	0.0%
2008-9	1	50.0%	1	50.0%	0	0.0%
2009-10						



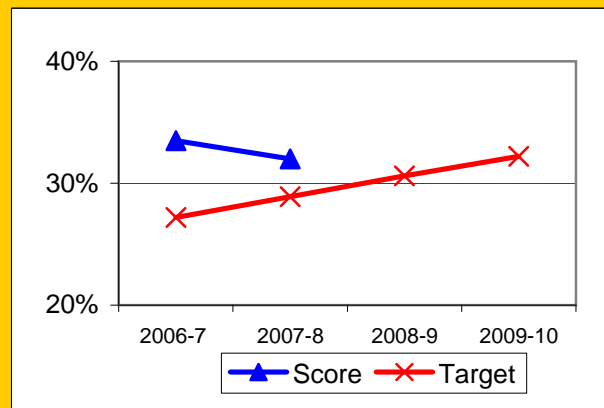
## Progress on English Learners Gaining One Proficiency Level Annually and Attaining English Language Proficiency

	Gained one Level on CELDT		Gained English Proficiency		
	Target	Score	Target	Score	
2003-4	51.0%		30.0%		
2004-5	51.5%	55.3%	30.7%	35.1%	
2005-6	52.0%	55.5%	31.4%	35.2%	
2006-7	48.7%	56.5%	27.2%	33.5%	New Norms
2007-8	50.1%	51.0%	28.9%	32.0%	
2008-9	51.6%		30.6%		
2009-10	53.1%		32.2%		

Gained One Level On CELDT

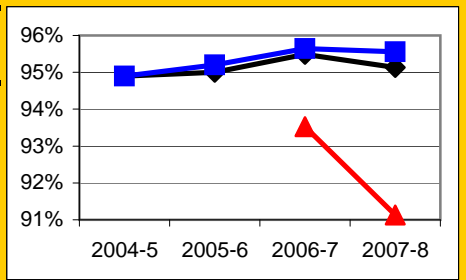


Attained English Proficiency



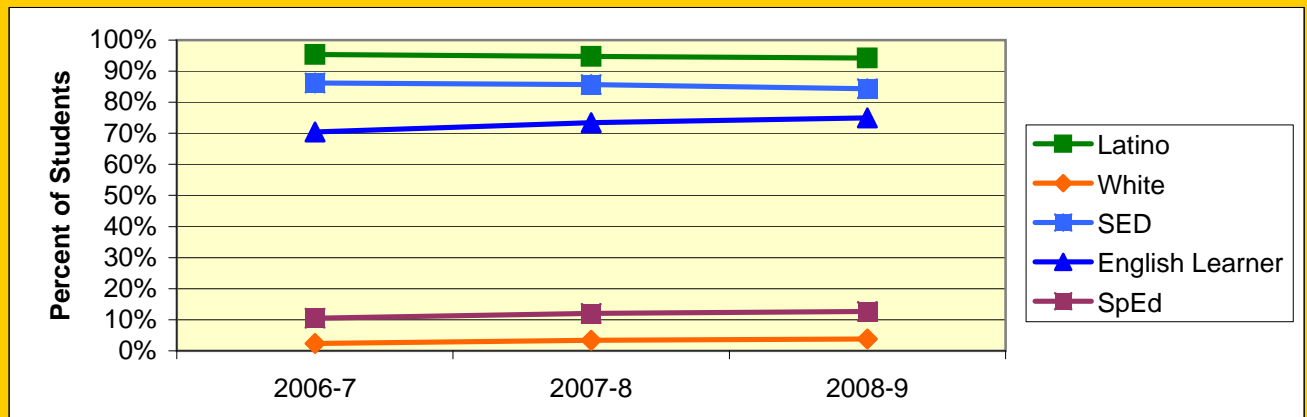
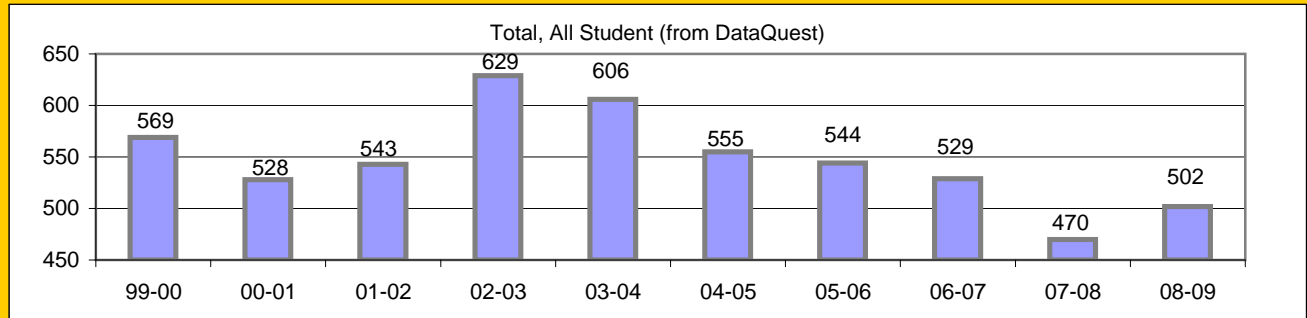
## Increase Efforts to Enhance Revenue

Attendance (Percent over year)	Lowest Month	Whole Year	District
2004-5		94.9%	94.9%
2005-6		95.0%	95.2%
2006-7	93.5%	95.5%	95.6%
2007-8	91.1%	95.1%	95.6%
2008-9			



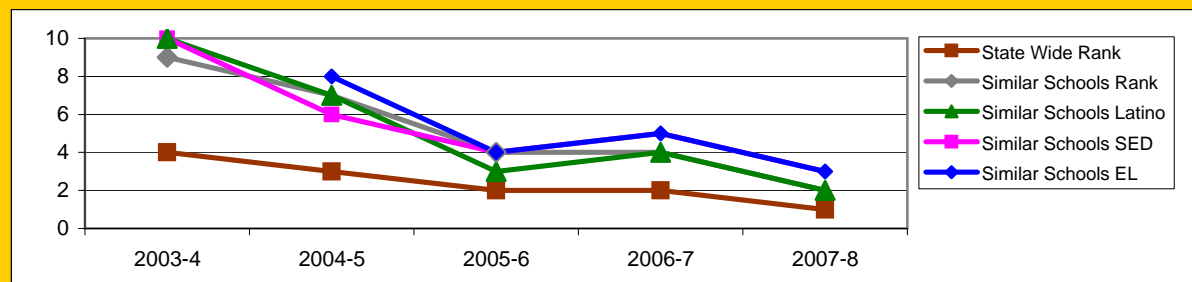
## Board Focus Goals: Harding Elementary (24) - May 2009

Demographics (K-6, 0809 Aeries)	Total	Female	Male	Latino	White	SED	English Learner	SpEd
Number	499	229	270	470	19	421	374	63
Percent of Total		45.9%	54.1%	94.2%	3.8%	84.4%	74.9%	12.6%



### Achieve a State Similar School Ranking of 8 or Higher (scale = 1-10)

	State Wide Rank	Similar Schools Rank	Similar Schools Latino	Similar Schools White	Similar Schools SED	Similar Schools EL	Similar Schools Disab
2003-4	4	9	10	NA	10	NA	NA
2004-5	3	7	7	NA	6	8	NA
2005-6	2	4	3	NA	4	4	NA
2006-7	2	4	4	NA	5	5	NA
2007-8	1	2	2	NA	3	3	NA



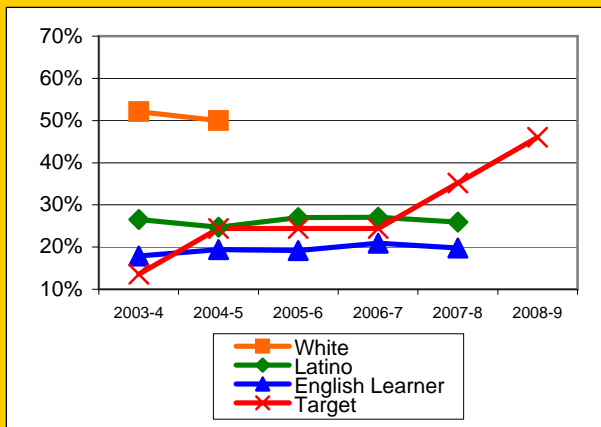
Harding Continued

**Exceed Federal Adequate Yearly Progress (AYP) Accountability Goals** (Blue = Not enough students, Bold/underline/italic = Made by adjustment, Red = Did not pass

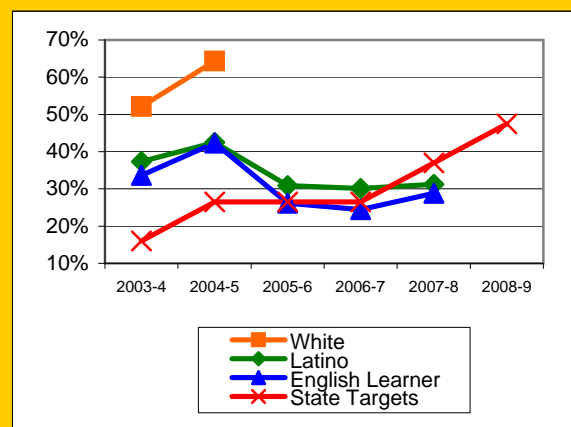
English Language Arts (ELA): Percent Proficient or Higher	State Targets	Schoolwide	Latino	White	Socio-Econ Disadv	English Learner	Stud with Disab	
2003-4	13.6%	27.8%	26.5%	52.1%	23.4%	17.9%	2.4%	
2004-5	24.4%	25.8%	24.7%	50.0%	21.3%	19.4%	2.6%	Mark 1
2005-6	24.4%	28.3%	27.0%		25.6%	19.2%	11.8%	Mark 2
2006-7	24.4%	27.8%	27.1%		26.3%	20.9%	8.7%	PI Y1
2007-8	35.2%	27.1%	25.9%		25.4%	19.8%	25.8%	PI Y2
2008-9	46.0%							PI Y3
2009-10	56.8%							

Math: Percent Proficient or Higher	State Targets	Schoolwide	Latino	White	Socio-Econ Disadv	English Learner	Stud with Disab	
2003-4	16.0%	37.7%	37.3%	52.1%	34.8%	33.6%	4.8%	
2004-5	26.5%	43.3%	42.5%	64.3%	39.5%	42.3%	18.4%	
2005-6	26.5%	31.9%	30.9%		30.0%	<u>26.2%</u>	20.6%	
2006-7	26.5%	30.1%	30.1%		27.1%	24.4%	8.7%	PI Y1
2007-8	37.0%	31.7%	31.2%		<u>31.7%</u>	28.8%	27.3%	PI Y2
2008-9	47.5%							PI Y3
2009-10	58.0%							

ELA

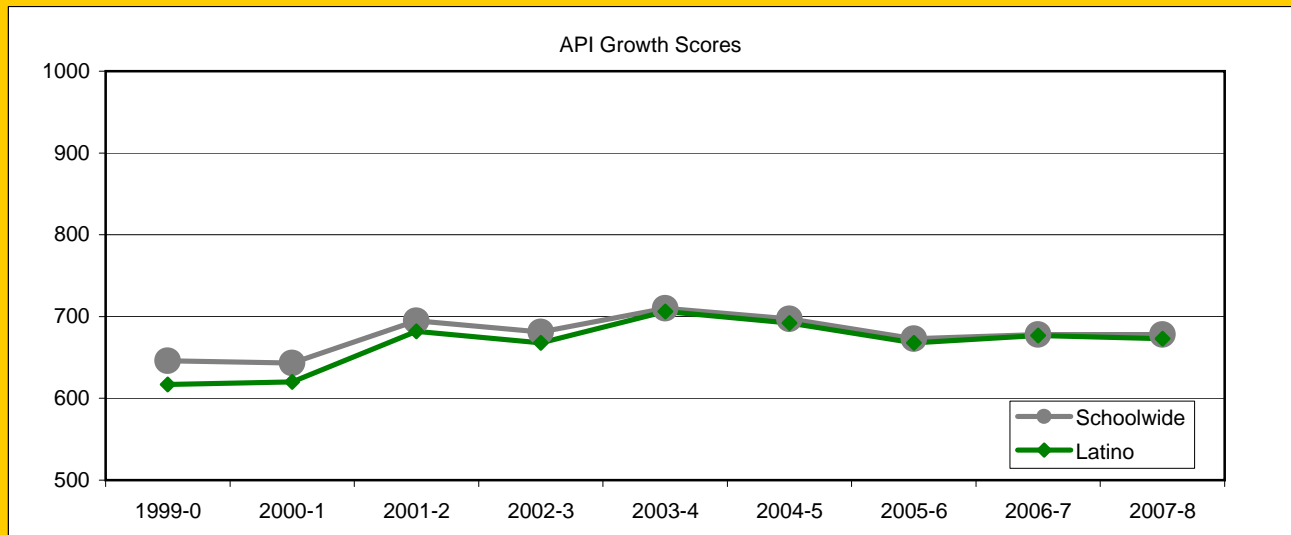


MATH



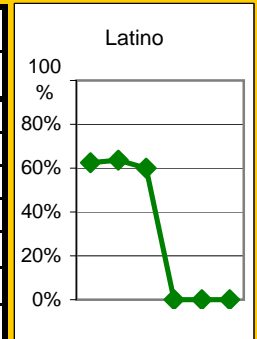
### Exceed State Academic Performance Index (API) Growth Goals

	Schoolwide		Latino		White	
	Base	Growth/ Goal Met	Base	Growth/ Goal Met	Base	Growth/ Goal Met
2003-4	682	710 Met	668	706 Met		
2004-5	702	697 Not Met	698	692 Not Met		
2005-6	697	673 Not Met	692	668 Not Met		
2006-7	673	678 Not Met	669	677 Met		
2007-8	689	678 Not Met	687	673 Not Met		
2008-9	680		676			



### Increase Participation Across Demographic Spectrum in Advanced Courses

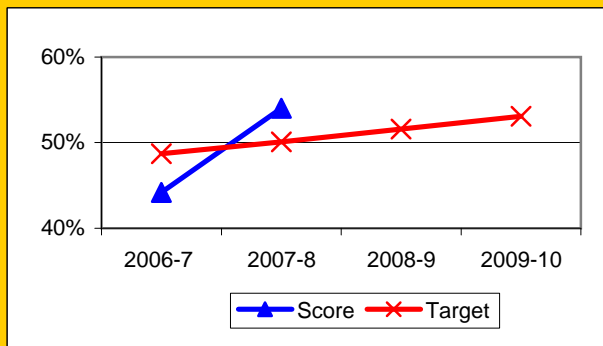
GATE (percent of all GATE students)	Latino		White		All Others	
	Number	Percent	Number	Percent	Number	Percent
2003-4	10	62.5%	5	31.3%	1	6.3%
2004-5	7	63.6%	3	27.3%	1	9.1%
2005-6	3	60.0%	1	20.0%	1	20.0%
2006-7	0	0.0%	1	100.0%	0	0.0%
2007-8	0	0.0%	1	100.0%	0	0.0%
2008-9	0	0.0%	1	100.0%	0	0.0%
2009-10						



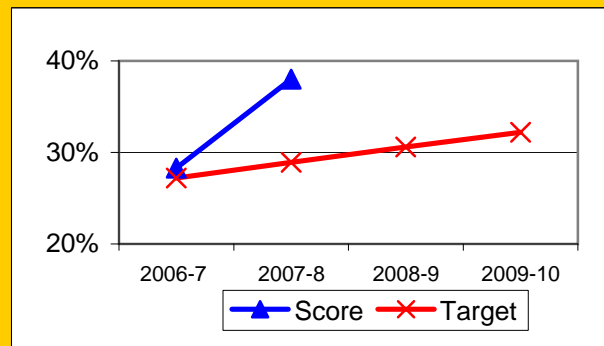
## Progress on English Learners Gaining One Proficiency Level Annually and Attaining English Language Proficiency

	Gained one Level on CELDT		Gained English Proficiency		
	Target	Score	Target	Score	
2003-4	51.0%		30.0%		
2004-5	51.5%	51.3%	30.7%	35.3%	
2005-6	52.0%	60.1%	31.4%	46.8%	
2006-7	48.7%	44.2%	27.2%	28.3%	New Norms
2007-8	50.1%	54.0%	28.9%	38.0%	
2008-9	51.6%		30.6%		
2009-10	53.1%		32.2%		

Gained One Level On CELDT

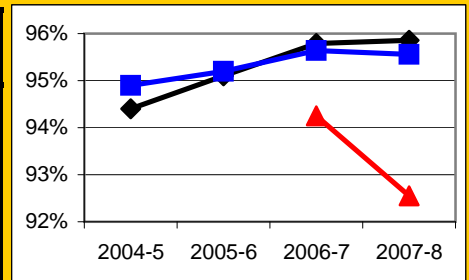


Attained English Proficiency



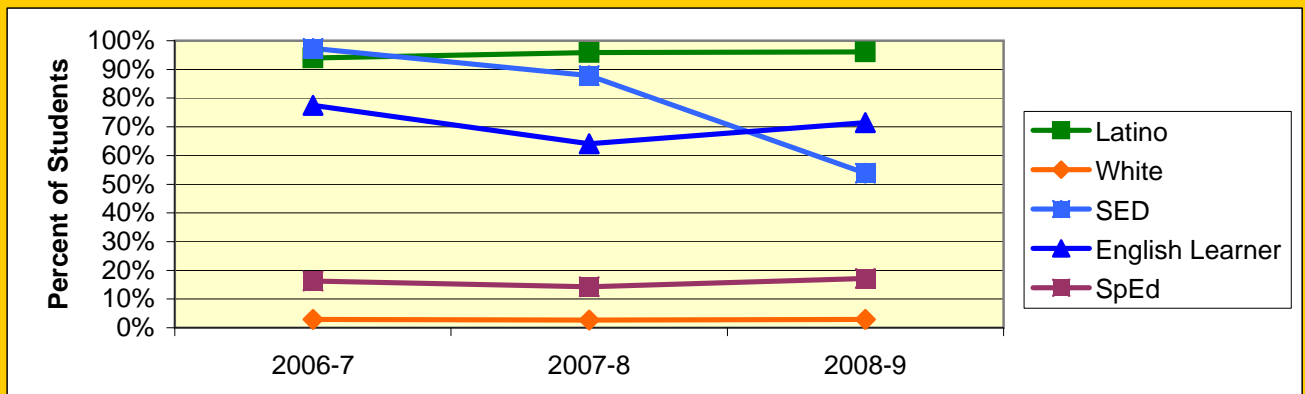
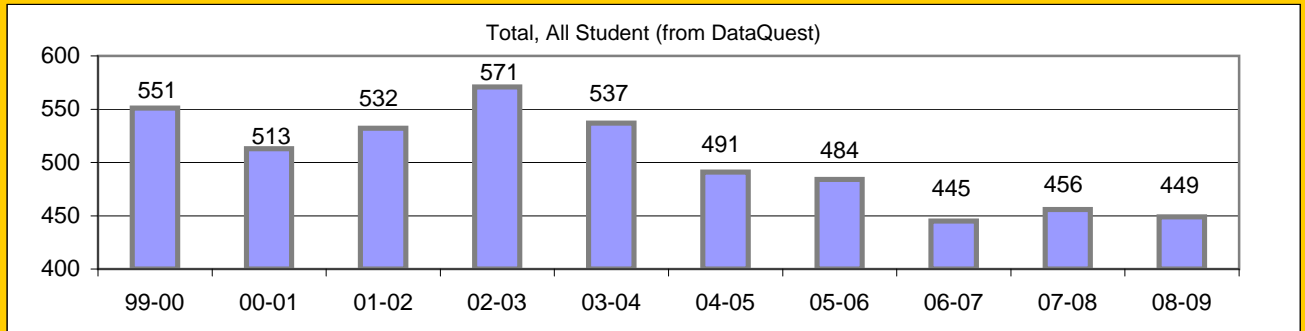
## Increase Efforts to Enhance Revenue

Attendance (Percent over year)	Lowest Month	Whole Year	District
2004-5		94.4%	94.9%
2005-6		95.1%	95.2%
2006-7	94.3%	95.8%	95.6%
2007-8	92.6%	95.9%	95.6%
2008-9			



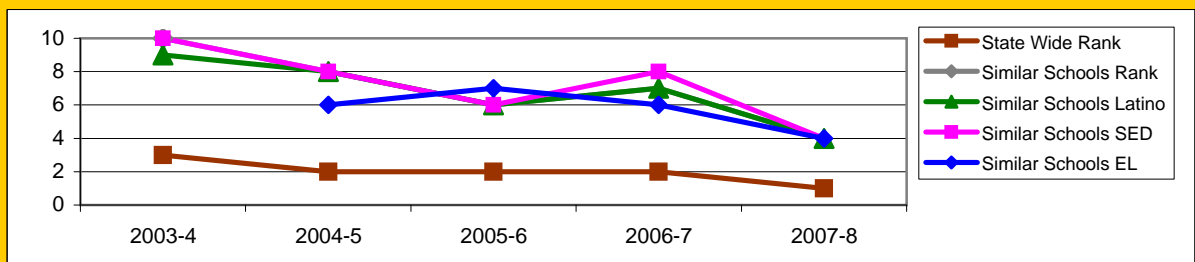
## Board Focus Goals: McKinley Elementary (27) - May 2009

Demographics (K-6, 0809 Aeries)	Total	Female	Male	Latino	White	SED	English Learner	SpEd
Number	442	222	220	425	13	238	316	76
Percent of Total		50.2%	49.8%	96.2%	2.9%	53.8%	71.5%	17.2%



### Achieve a State Similar School Ranking of 8 or Higher (scale = 1-10)

	State Wide Rank	Similar Schools Rank	Similar Schools Latino	Similar Schools White	Similar Schools SED	Similar Schools EL	Similar Schools Disab
2003-4	3	10	9	NA	10	NA	NA
2004-5	2	8	8	NA	8	6	NA
2005-6	2	6	6	NA	6	7	NA
2006-7	2	7	7	NA	8	6	NA
2007-8	1	4	4	NA	4	4	NA

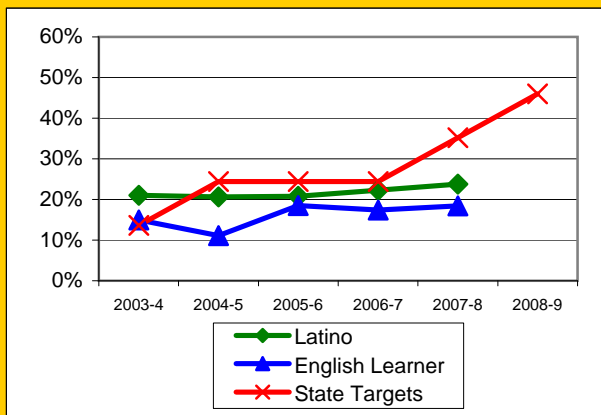


**Exceed Federal Adequate Yearly Progress (AYP) Accountability Goals** (Blue = Not enough students, Bold/underline/italic = Made by adjustment, Red = Did not pass)

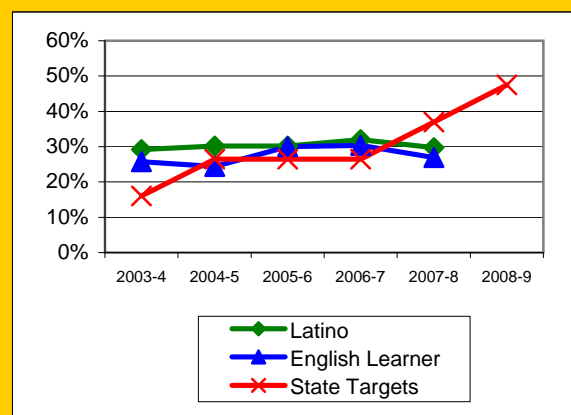
English Language Arts (ELA): Percent Proficient or Higher	State Targets	Schoolwide	Latino	White	Socio-Econ Disadv	English Learner	Stud with Disab	
2003-4	13.6%	22.8%	21.0%		22.8%	15.0%	5.3%	Mark 2
2004-5	24.4%	22.2%	20.6%		22.2%	11.1%	8.7%	PI Y1
2005-6	24.4%	22.6%	20.8%		22.6%	<u>18.5%</u>	0.0%	PI Y2
2006-7	24.4%	24.7%	22.3%		24.7%	17.4%	4.0%	PI Y3
2007-8	35.2%	25.7%	23.8%	72.7%	25.1%	18.4%	6.6%	PI Y4
2008-9	46.0%							PI Y5
2009-10	56.8%							

Math: Percent Proficient or Higher	State Targets	Schoolwide	Latino	White	Socio-Econ Disadv	English Learner	Stud with Disab	
2003-4	16.0%	30.3%	29.2%		30.3%	25.7%	8.9%	Mark 2
2004-5	26.5%	31.9%	30.2%		31.9%	24.4%	13.0%	PI Y1
2005-6	26.5%	31.5%	30.2%		31.5%	30.0%	<u>8.0%</u>	PI Y2
2006-7	26.5%	34.1%	32.0%		34.1%	30.4%	20.0%	PI Y3
2007-8	37.0%	31.3%	29.7%	72.7%	30.8%	26.9%	<u>23.0%</u>	PI Y4
2008-9	47.5%							PI Y5
2009-10	58.0%							

ELA

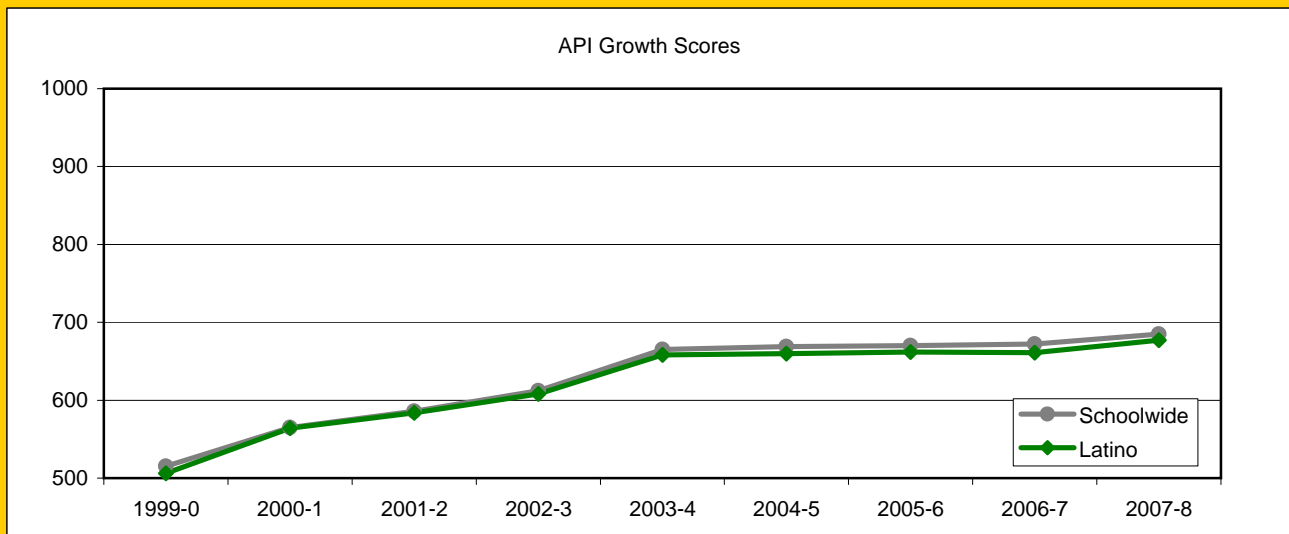


MATH



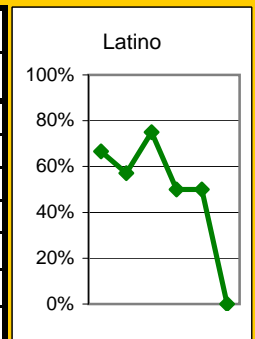
### Exceed State Academic Performance Index (API) Growth Goals

	Schoolwide		Latino		White	
	Base	Growth/ Goal Met	Base	Growth/ Goal Met	Base	Growth/ Goal Met
2003-4	597	665 Met	594	658 Met		
2004-5	665	669 Not Met	658	660 Not Met		
2005-6	669	670 Not Met	660	662 Not Met		
2006-7	668	672 Not Met	660	661 Not Met		
2007-8	691	685 Not Met	680	677 Not Met		
2008-9	674		667			



### Increase Participation Across Demographic Spectrum in Advanced Courses

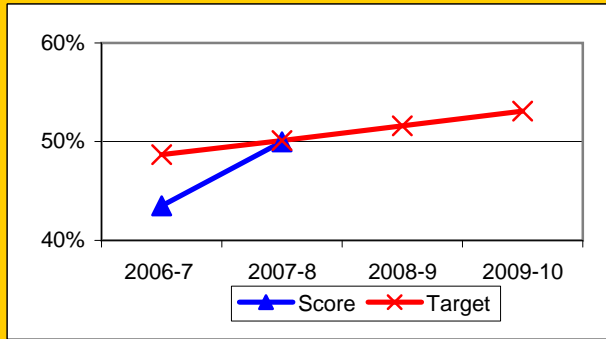
GATE (percent of all GATE students)	Latino		White		All Others	
	Number	Percent	Number	Percent	Number	Percent
2003-4	2	66.7%	0	0.0%	1	33.3%
2004-5	4	57.1%	2	28.6%	1	14.3%
2005-6	3	75.0%	1	25.0%	0	0.0%
2006-7	1	50.0%	1	50.0%	0	0.0%
2007-8	1	50.0%	1	50.0%	0	0.0%
2008-9	0	0.0%	0	0.0%	0	0.0%
2009-10						



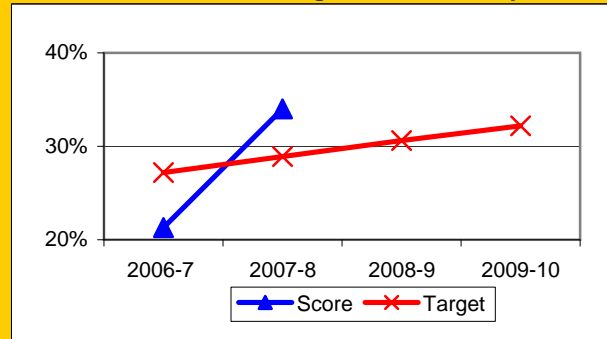
## Progress on English Learners Gaining One Proficiency Level Annually and Attaining English Language Proficiency

	Gained one Level on CELDT		Gained English Proficiency		
	Target	Score	Target	Score	
2003-4	51.0%		30.0%		
2004-5	51.5%	54.0%	30.7%	34.1%	
2005-6	52.0%	55.5%	31.4%	34.5%	
2006-7	48.7%	43.5%	27.2%	21.3%	New Norms
2007-8	50.1%	50.0%	28.9%	34.0%	
2008-9	51.6%		30.6%		
2009-10	53.1%		32.2%		

Gained One Level On CELDT

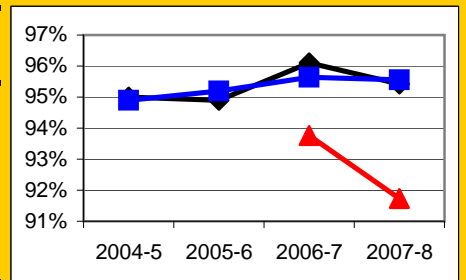


Attained English Proficiency



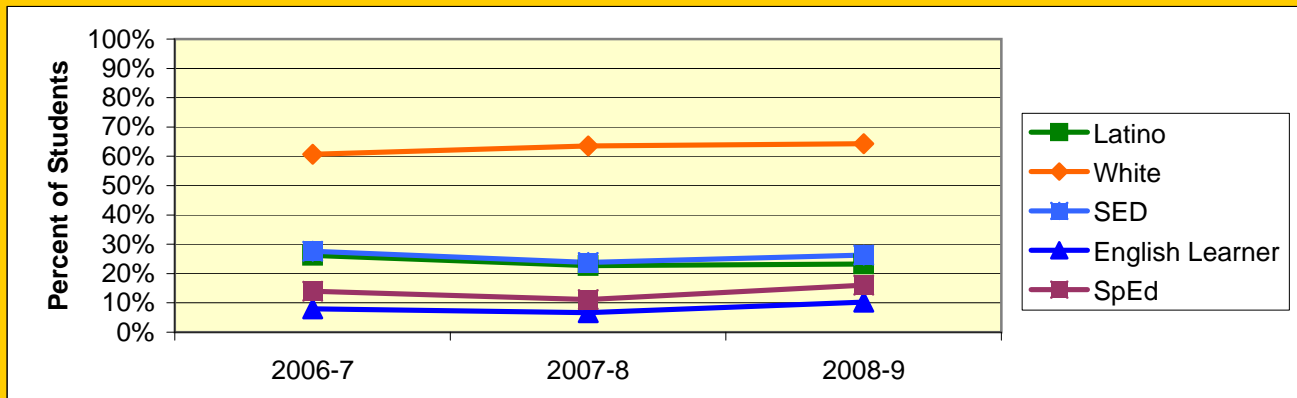
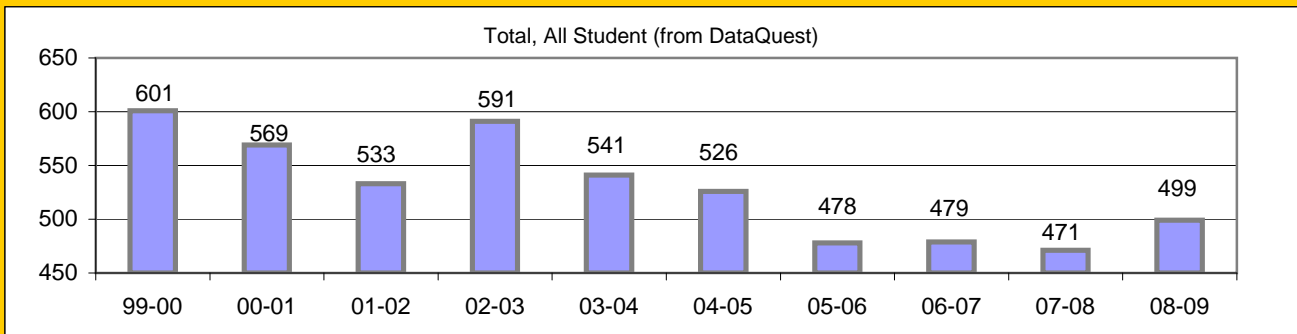
## Increase Efforts to Enhance Revenue

Attendance (Percent over year)	Lowest Month	Whole Year	District
2004-5		95.0%	94.9%
2005-6		94.9%	95.2%
2006-7	93.8%	96.1%	95.6%
2007-8	91.7%	95.4%	95.6%
2008-9			



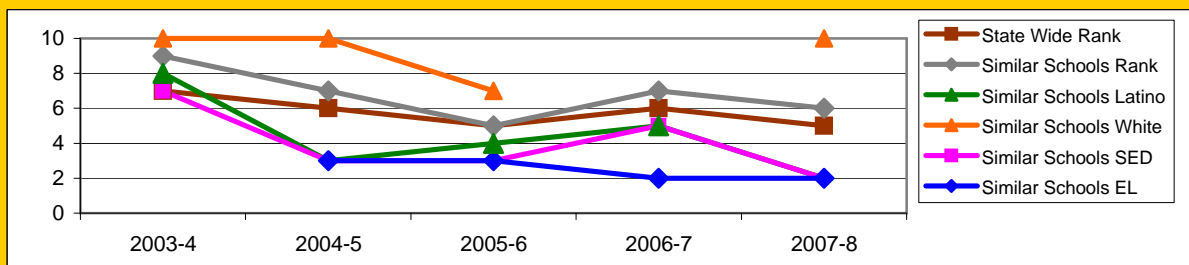
## Board Focus Goals: Monroe Elementary (28) - May 2009

Demographics (K-6, 0809)	Total	Female	Male	Latino	White	SED	English Learner	SpEd
Number	498	232	266	347	127	277	198	66
Percent of Total		46.6%	53.4%	69.7%	25.5%	55.6%	39.8%	13.3%



### Achieve a State Similar School Ranking of 8 or Higher (scale = 1-10)

	State Wide Rank	Similar Schools Rank	Similar Schools Latino	Similar Schools White	Similar Schools SED	Similar Schools EL	Similar Schools Disab
2003-4	7	9	8	10	7	NA	NA
2004-5	6	7	3	10	3	3	NA
2005-6	5	5	4	7	3	3	NA
2006-7	6	7	5	NA	5	2	NA
2007-8	5	6	2	10	2	2	NA



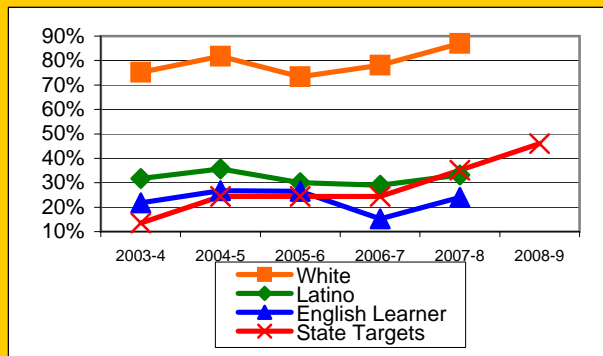
**Exceed Federal Adequate Yearly Progress (AYP) Accountability Goals** (Blue = Not enough students, Bold/underline/italic = Made by adjustment, Red = Did not pass

English Language Arts (ELA): Percent Proficient or Higher	State Targets	Schoolwide	Latino	White	Socio-Econ Disadv	English Learner	Stud with Disab
2003-4	13.6%	44.8%	31.8%	75.2%	27.2%	21.8%	23.4%
2004-5	24.4%	48.1%	35.6%	81.7%	31.1%	26.7%	19.6%
2005-6	24.4%	41.6%	30.0%	73.4%	27.7%	26.5%	8.8%
2006-7	24.4%	42.1%	29.0%	78.1%	26.7%	15.3%	0.0%
2007-8	35.2%	47.4%	<b>33.2%</b>	87.0%	<b>31.6%</b>	<b>24.0%</b>	15.4%
2008-9	46.0%						
2009-10	56.8%						

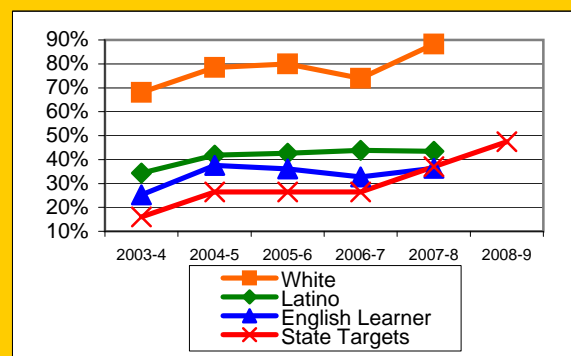
**1 Mark**

Math: Percent Proficient or Higher	State Targets	Schoolwide	Latino	White	Socio-Econ Disadv	English Learner	Stud with Disab
2003-4	16.0%	44.1%	34.4%	68.0%	30.0%	25.3%	19.1%
2004-5	26.5%	51.1%	41.8%	78.5%	36.4%	37.5%	21.7%
2005-6	26.5%	52.0%	42.7%	80.0%	38.8%	36.1%	17.6%
2006-7	26.5%	52.4%	43.9%	74.0%	39.8%	32.8%	3.6%
2007-8	37.0%	54.3%	43.4%	88.2%	42.2%	<b>36.4%</b>	23.1%
2008-9	47.5%						
2009-10	58.0%						

**ELA**

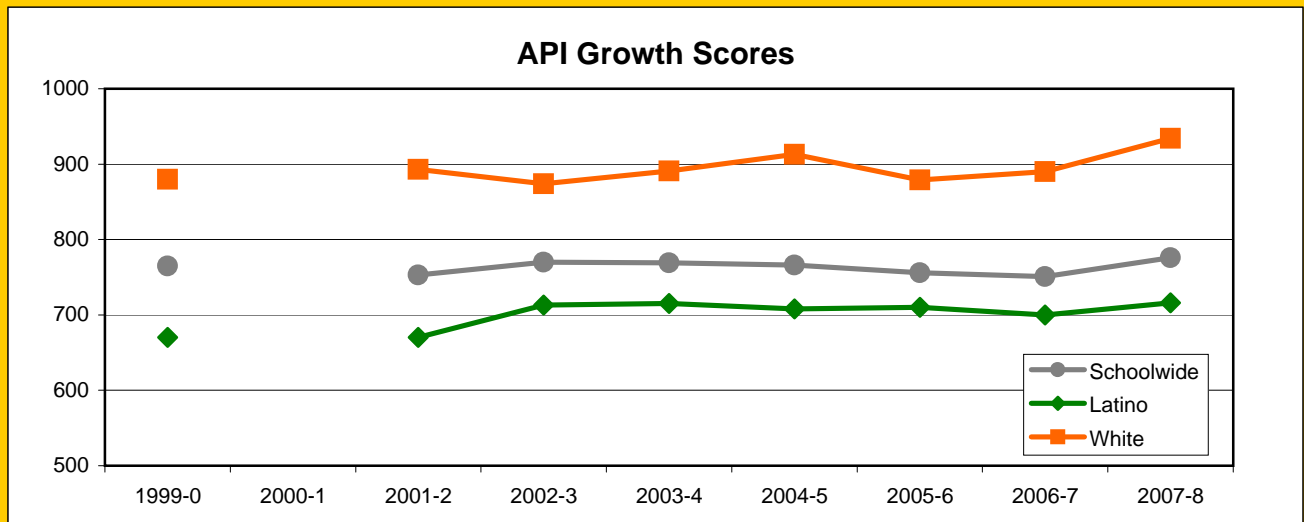


**MATH**



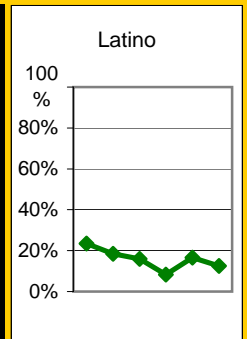
### Exceed State Academic Performance Index (API) Growth Goals

	Schoolwide		Latino		White	
	Base	Growth/ Goal Met	Base	Growth/ Goal Met	Base	Growth/ Goal Met
2003-4	766	769 Met	707	715 Met	874	891 Met
2004-5	763	766 Met	712	708 Not Met	881	913 Met
2005-6	766	756 Not Met	708	710 Met	913	879 Met
2006-7	753	751 Not Met	707	700 Not Met	877	890 Met
2007-8	768	776 Met	721	716 Not Met	892	934 Met
2008-9	764		707		927	



### Increase Participation Across Demographic Spectrum in Advanced Courses

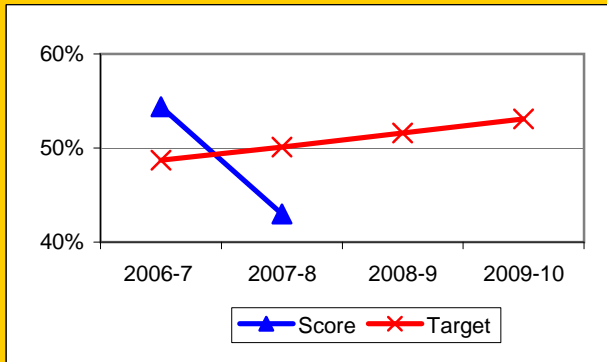
GATE (percent of all GATE students)	Latino		White		All Others	
	Number	Percent	Number	Percent	Number	Percent
2003-4	11	23.4%	30	63.8%	6	12.8%
2004-5	7	18.4%	27	71.1%	4	10.5%
2005-6	4	16.0%	17	68.0%	4	16.0%
2006-7	1	8.3%	10	83.3%	1	8.3%
2007-8	2	16.7%	9	75.0%	1	8.3%
2008-9	1	12.5%	6	75.0%	1	12.5%
2009-10						



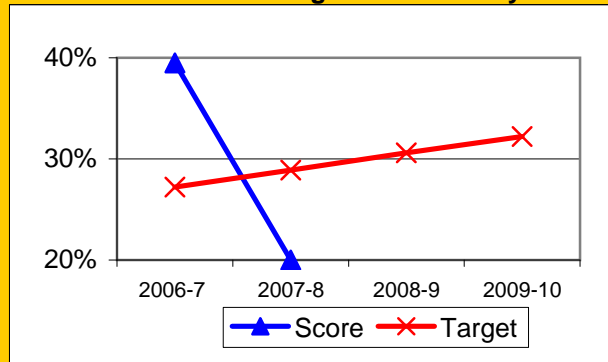
## Progress on English Learners Gaining One Proficiency Level Annually and Attaining English Language Proficiency

	Gained one Level on CELDT		Gained English Proficiency		
	Target	Score	Target	Score	
2003-4	51.0%		30.0%		
2004-5	51.5%	62.2%	30.7%	45.3%	
2005-6	52.0%	46.4%	31.4%	28.4%	
2006-7	48.7%	54.4%	27.2%	39.5%	New Norms
2007-8	50.1%	43.0%	28.9%	20.0%	
2008-9	51.6%		30.6%		
2009-10	53.1%		32.2%		

Gained One Level On CELDT

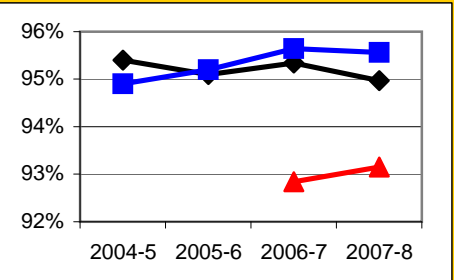


Attained English Proficiency



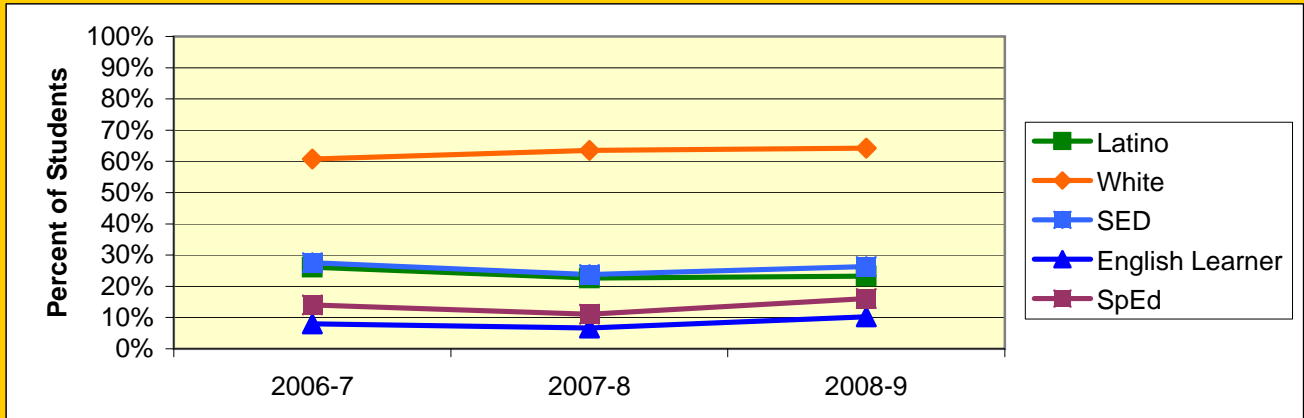
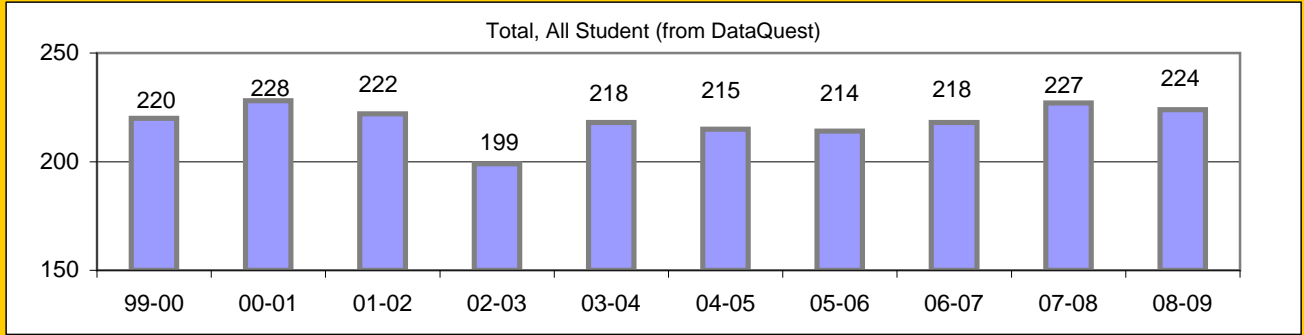
## Increase Efforts to Enhance Revenue

Attendance (Percent over year)	Lowest Month	Whole Year	District
2004-5		95.4%	94.9%
2005-6		95.1%	95.2%
2006-7	92.8%	95.3%	95.6%
2007-8	93.2%	95.0%	95.6%
2008-9			



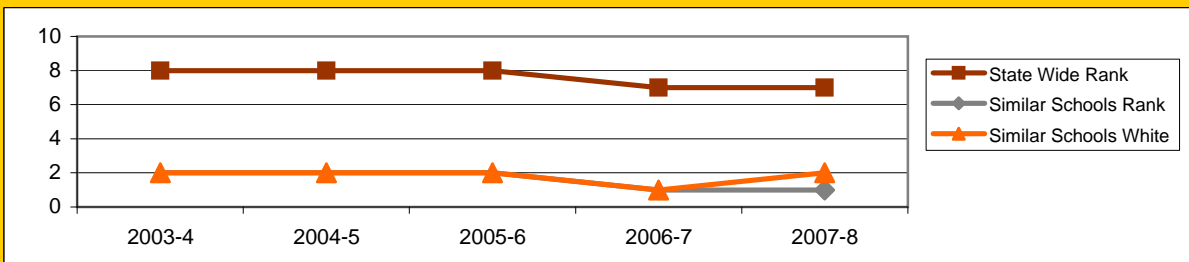
# Board Focus Goals: Open Alternative Elementary (25) - May 2009

Demographics (K-8, 0809 Aeries)	Total	Female	Male	Latino	White	SED	English Learner	SpEd
Number	224	106	118	52	144	59	23	36
Percent of Total		47.3%	52.7%	23.2%	64.3%	26.3%	10.3%	16.1%



## Achieve a State Similar School Ranking of 8 or Higher (scale = 1-10)

	State Wide Rank	Similar Schools Rank	Similar Schools Latino	Similar Schools White	Similar Schools SED	Similar Schools EL	Similar Schools Disab
2003-4	8	2	NA	2	NA	NA	NA
2004-5	8	2	NA	2	NA	NA	NA
2005-6	8	2	NA	2	NA	NA	NA
2006-7	7	1	NA	1	NA	NA	NA
2007-8	7	1	NA	2	NA	NA	NA



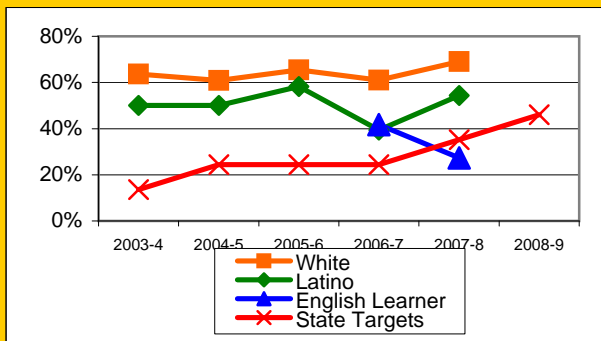
Open Alternative Continued

**Exceed Federal Adequate Yearly Progress (AYP) Accountability Goals** (Blue = Not enough students, Bold/underline/italic = Made by adjustment, Red = Did not pass

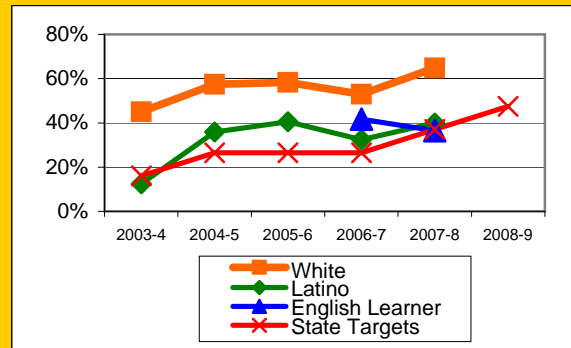
English Language Arts (ELA): Percent Proficient or Higher	State Targets	Schoolwide	Latino	White	Socio-Econ Disadv	English Learner	Stud with Disab
2003-4	13.6%	58.6%	50.0%	63.7%	45.1%		35.2%
2004-5	24.4%	58.3%	50.0%	60.8%	50.0%		25.0%
2005-6	24.4%	65.7%	58.3%	65.5%	48.6%		56.3%
2006-7	24.4%	58.0%	39.4%	61.0%	54.1%	41.7%	46.2%
2007-8	35.2%	64.8%	54.3%	69.0%	45.9%	27.3%	50.0%
2008-9	46.0%						
2009-10	56.8%						

Math: Percent Proficient or Higher	State Targets	Schoolwide	Latino	White	Socio-Econ Disadv	English Learner	Stud with Disab
2003-4	16.0%	36.8%	12.5%	45.0%	25.8%		11.7%
2004-5	26.5%	53.0%	35.9%	57.5%	28.6%		14.3%
2005-6	26.5%	56.8%	40.5%	58.3%	45.9%		41.2%
2006-7	26.5%	47.8%	32.4%	53.0%	40.5%	41.7%	29.4%
2007-8	37.0%	58.0%	40.0%	64.8%	48.6%	36.4%	40.9%
2008-9	47.5%						
2009-10	58.0%						

ELA

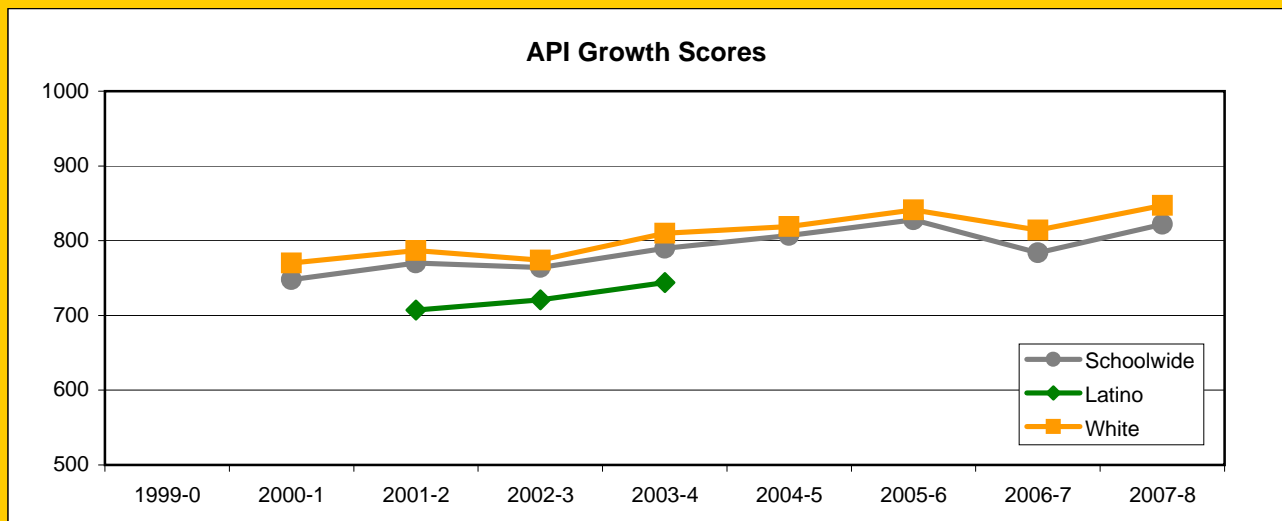


MATH



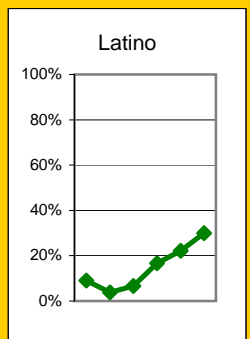
## Exceed State Academic Performance Index (API) Growth Goals

	Schoolwide		Latino		White	
	Base	Growth/ Goal Met	Base	Growth/ Goal Met	Base	Growth/ Goal Met
2003-4	753	790 Met	703	744 Met	764	810 Met
2004-5	788	807 Met			807	819 Met
2005-6	807	828 Met			819	841 Met
2006-7	824	784 Not Met			837	814 Met
2007-8	800	822 Met			823	847 Met
2008-9	819				848	



## Increase Participation Across Demographic Spectrum in Advanced Courses

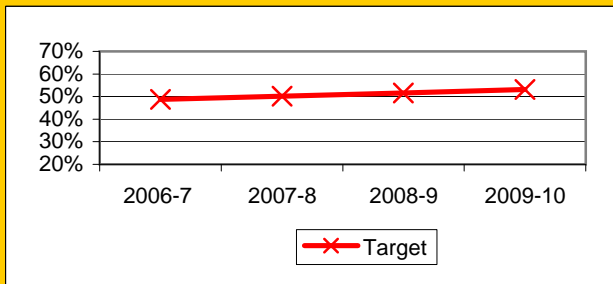
GATE (percent of all GATE students)	Latino		White		All Others	
	Number	Percent	Number	Percent	Number	Percent
2003-4	1	9.1%	4	36.4%	6	54.5%
2004-5	1	3.8%	11	42.3%	14	53.8%
2005-6	1	6.7%	10	66.7%	4	26.7%
2006-7	2	16.7%	8	66.7%	2	16.7%
2007-8	2	22.2%	5	55.6%	2	22.2%
2008-9	3	30.0%	5	50.0%	2	20.0%
2009-10						



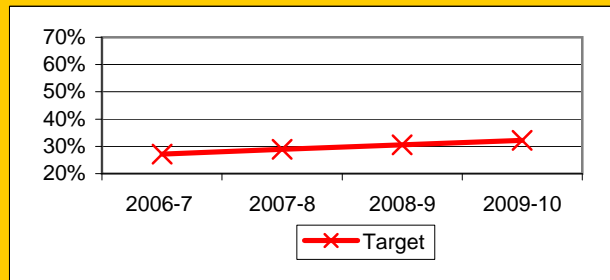
## Progress on English Learners Gaining One Proficiency Level Annually and Attaining English Language Proficiency

	Gained one Level on CELDT		Gained English Proficiency		
	Target	Score	Target	Score	
2003-4	51.0%		30.0%		
2004-5	51.5%		30.7%		
2005-6	52.0%		31.4%		
2006-7	48.7%		27.2%		New Norms
2007-8	50.1%		28.9%		
2008-9	51.6%		30.6%		
2009-10	53.1%		32.2%		

Gained One Level On CELDT

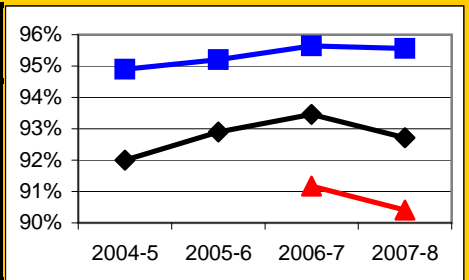


Attained English Proficiency



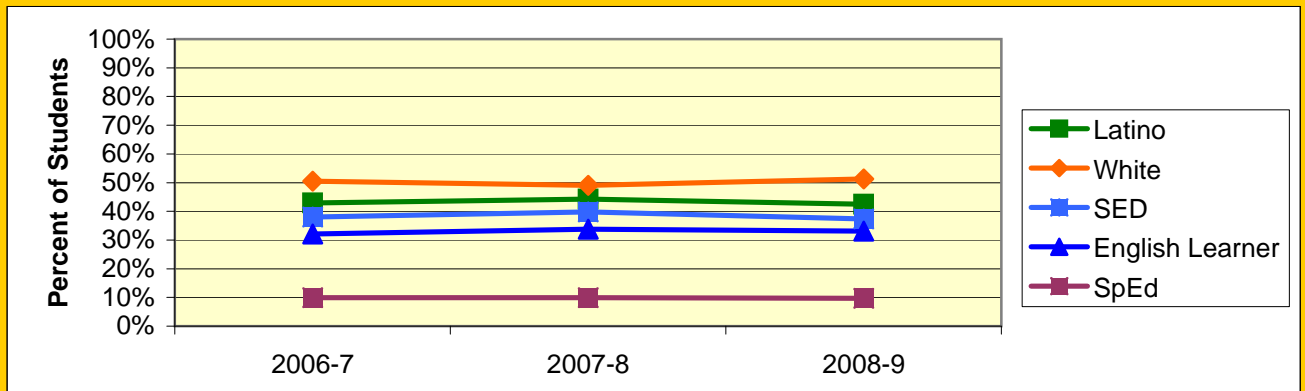
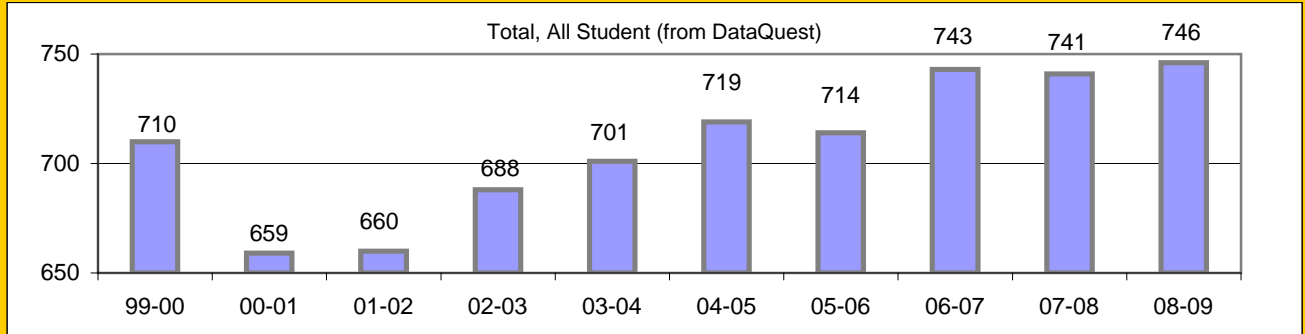
## Increase Efforts to Enhance Revenue

Attendance (Percent over year)	Lowest Month	Whole Year	District
2004-5		92.0%	94.9%
2005-6		92.9%	95.2%
2006-7	91.2%	93.5%	95.6%
2007-8	90.4%	92.7%	95.6%
2008-9			



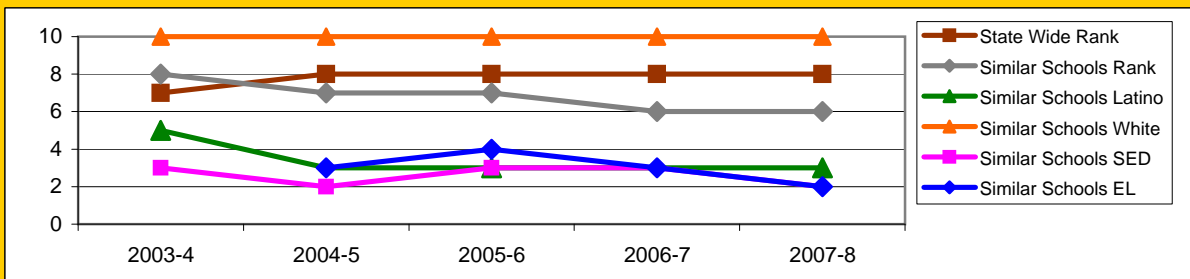
## Board Focus Goals: Peabody Elementary (29) - May 2009

Demographics (K-6, 0809 Aeries)	Total	Female	Male	Latino	White	SED	English Learner	SpEd
Number	741	358	383	315	380	277	245	72
Percent of Total		48.3%	51.7%	42.5%	51.3%	37.4%	33.1%	9.7%



### Achieve a State Similar School Ranking of 8 or Higher (scale = 1-10)

	State Wide Rank	Similar Schools Rank	Similar Schools Latino	Similar Schools White	Similar Schools SED	Similar Schools EL	Similar Schools Disab
2003-4	7	8	5	10	3	NA	NA
2004-5	8	7	3	10	2	3	NA
2005-6	8	7	3	10	3	4	NA
2006-7	8	6	3	10	3	3	NA
2007-8	8	6	3	10	2	2	NA



**Exceed Federal Adequate Yearly Progress (AYP) Accountability Goals** (Blue = Not enough students, Bold/underline/italic = Made by adjustment, Red = Did not pass

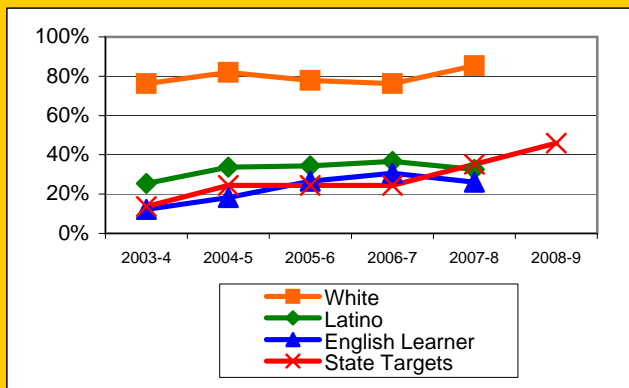
English Language Arts (ELA): Percent Proficient or Higher	State Targets	Schoolwide	Latino	White	Socio-Econ Disadv	English Learner	Stud with Disab
2003-4	13.6%	48.6%	25.4%	76.2%	19.4%	12.2%	2.6%
2004-5	24.4%	56.9%	33.7%	81.9%	25.9%	18.2%	15.0%
2005-6	24.4%	56.9%	34.3%	77.9%	31.5%	26.5%	26.1%
2006-7	24.4%	58.5%	36.6%	76.2%	33.5%	30.7%	21.3%
2007-8	35.2%	60.4%	32.6%	85.3%	32.1%	26.1%	38.0%
2008-9	46.0%						
2009-10	56.8%						

1 Mark

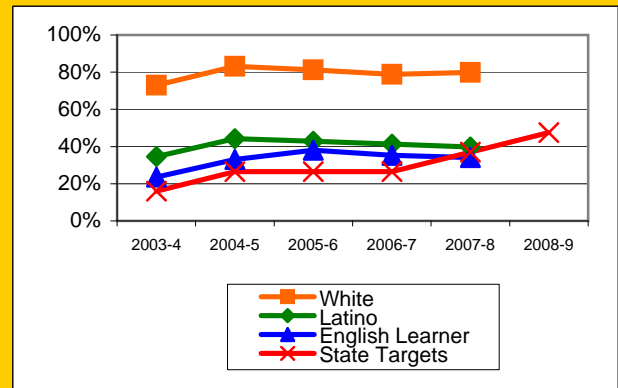
Math: Percent Proficient or Higher	State Targets	Schoolwide	Latino	White	Socio-Econ Disadv	English Learner	Stud with Disab
2003-4	16.0%	52.4%	34.6%	73.0%	28.0%	23.5%	5.5%
2004-5	26.5%	63.0%	44.3%	83.2%	37.8%	33.1%	30.8%
2005-6	26.5%	62.6%	42.9%	81.3%	39.0%	38.1%	34.8%
2006-7	26.5%	61.7%	41.3%	78.9%	38.2%	35.2%	23.4%
2007-8	37.0%	61.6%	39.8%	79.9%	39.1%	34.1%	28.0%
2008-9	47.5%						
2009-10	58.0%						

1 Mark

ELA

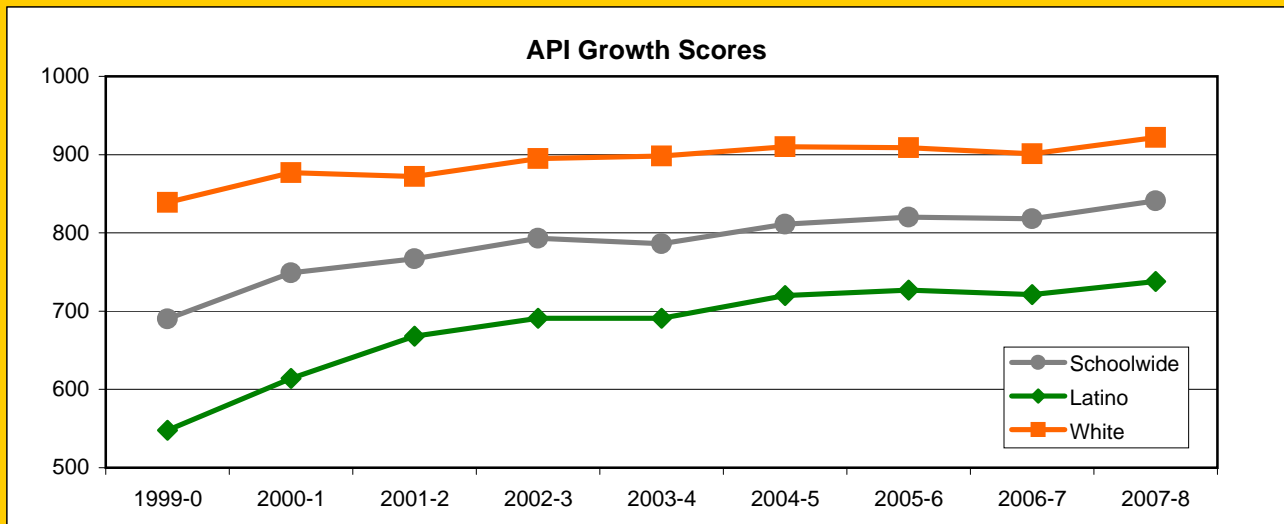


MATH



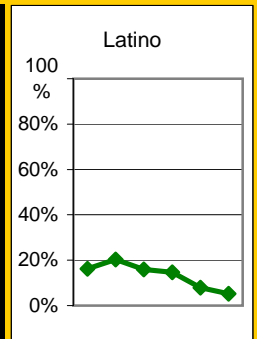
## Exceed State Academic Performance Index (API) Growth Goals

	Schoolwide		Latino		White	
	Base	Growth/ Goal Met	Base	Growth/ Goal Met	Base	Growth/ Goal Met
2003-4	794	786 Not Met	694	691 Not Met	896	898 Met
2004-5	783	811 Met	691	720 Met	889	910 Met
2005-6	811	820 Met	720	727 Met	910	909 Met
2006-7	819	818 Met	725	721 Not Met	907	901 Met
2007-8	827	841 Met	734	738 Not Met	901	922 Met
2008-9	833		732		919	



## Increase Participation Across Demographic Spectrum in Advanced Courses

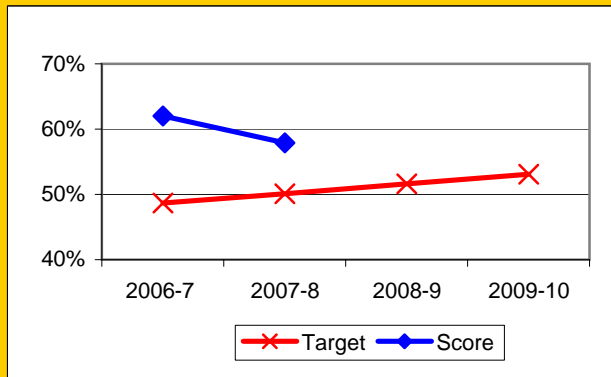
GATE (percent of all GATE students)	Latino		White		All Others	
	Number	Percent	Number	Percent	Number	Percent
2003-4	11	16.2%	54	79.4%	3	4.4%
2004-5	16	20.3%	61	77.2%	2	2.5%
2005-6	10	15.9%	53	84.1%	0	0.0%
2006-7	10	14.7%	56	82.4%	2	2.9%
2007-8	6	7.9%	67	88.2%	3	3.9%
2008-9	3	5.3%	51	89.5%	3	5.3%
2009-10						



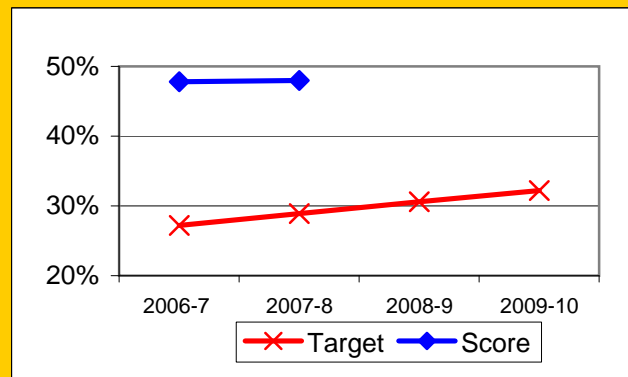
## Progress on English Learners Gaining One Proficiency Level Annually and Attaining English Language Proficiency

	Gained one Level on CELDT		Gained English Proficiency		
	Target	Score	Target	Score	
2003-4	51.0%		30.0%		
2004-5	51.5%	53.5%	30.7%	26.5%	
2005-6	52.0%	65.2%	31.4%	46.5%	
2006-7	48.7%	62.0%	27.2%	47.8%	New Norms
2007-8	50.1%	57.9%	28.9%	48.0%	
2008-9	51.6%		30.6%		
2009-10	53.1%		32.2%		

Gained One Level On CELDT

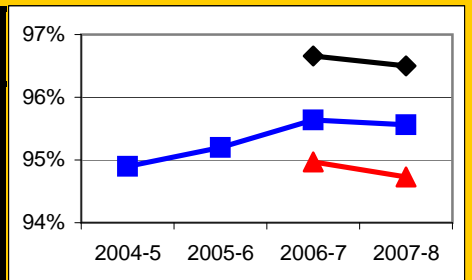


Attained English Proficiency



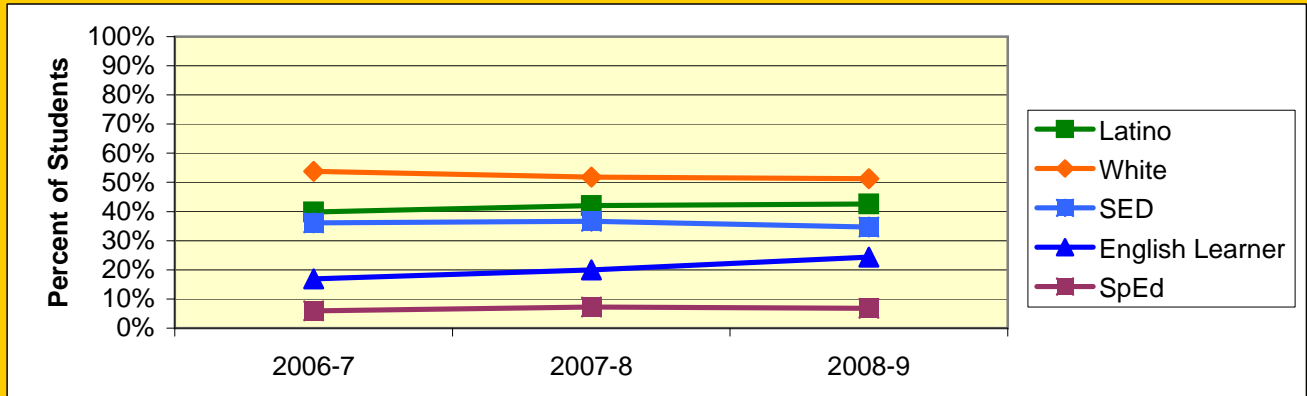
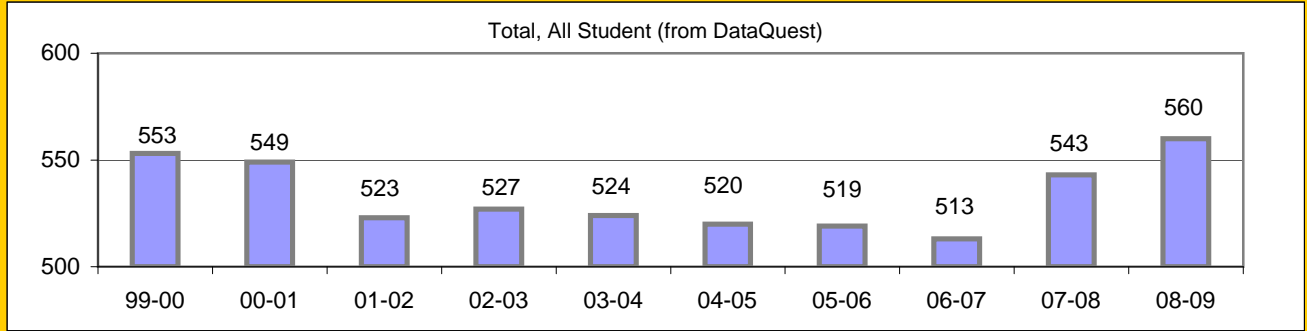
## Increase Efforts to Enhance Revenue

Attendance (Percent over year)	Lowest Month	Whole Year	District
2004-5			94.9%
2005-6			95.2%
2006-7	95.0%	96.7%	95.6%
2007-8	94.7%	96.5%	95.6%
2008-9			



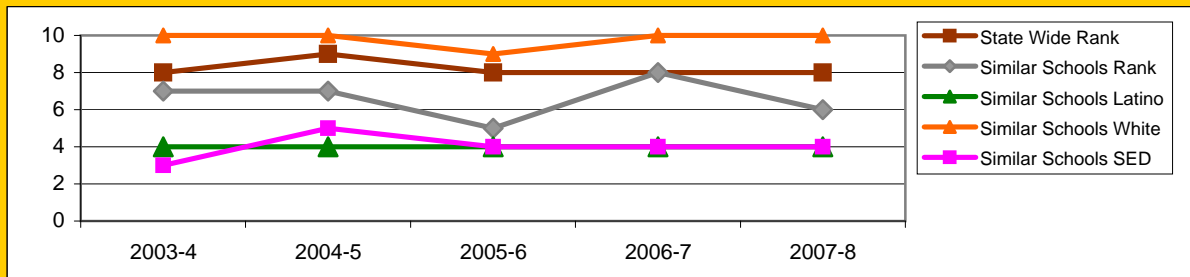
# Board Focus Goals: Roosevelt Elementary (30) - May 2009

Demographics (K-6, 0809 Aeries)	Total	Female	Male	Latino	White	SED	English Learner	SpEd
Number	554	270	284	236	284	192	135	38
Percent of Total		48.7%	51.3%	42.6%	51.3%	34.7%	24.4%	6.9%



## Achieve a State Similar School Ranking of 8 or Higher (scale = 1-10)

	State Wide Rank	Similar Schools Rank	Similar Schools Latino	Similar Schools White	Similar Schools SED	Similar Schools EL	Similar Schools Disab
2003-4	8	7	4	10	3	NA	NA
2004-5	9	7	4	10	5	NA	NA
2005-6	8	5	4	9	4	NA	NA
2006-7	8	8	4	10	4	NA	NA
2007-8	8	6	4	10	4	NA	NA



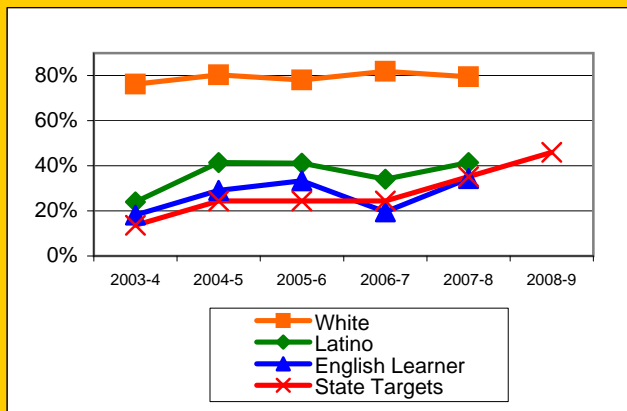
Roosevelt Continued

**Exceed Federal Adequate Yearly Progress (AYP) Accountability Goals** (Blue = Not enough students, Bold/underline/italic = Made by adjustment, Red = Did not pass

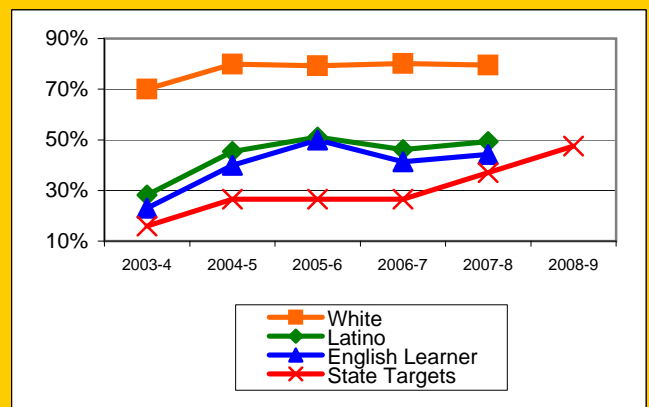
English Language Arts (ELA): Percent Proficient or Higher	State Targets	Schoolwide	Latino	White	Socio-Econ Disadv	English Learner	Stud with Disab
2003-4	13.6%	56.2%	24.0%	76.3%	25.6%	18.1%	19.3%
2004-5	24.4%	65.0%	41.5%	80.4%	42.1%	29.1%	20.7%
2005-6	24.4%	60.7%	41.2%	78.1%	36.7%	33.3%	25.9%
2006-7	24.4%	60.3%	34.1%	81.9%	28.3%	19.6%	14.8%
2007-8	35.2%	61.1%	41.4%	79.5%	42.1%	<b>34.3%</b>	35.5%
2008-9	46.0%						
2009-10	56.8%						

Math: Percent Proficient or Higher	State Targets	Schoolwide	Latino	White	Socio-Econ Disadv	English Learner	Stud with Disab
2003-4	16.0%	53.7%	28.2%	70.0%	26.7%	23.0%	22.5%
2004-5	26.5%	66.4%	45.4%	79.9%	47.9%	40.0%	27.6%
2005-6	26.5%	66.7%	51.1%	79.2%	45.3%	50.0%	25.9%
2006-7	26.5%	65.7%	46.1%	80.2%	40.2%	41.3%	25.9%
2007-8	37.0%	64.9%	49.3%	79.5%	47.9%	44.3%	51.6%
2008-9	47.5%						
2009-10	58.0%						

ELA

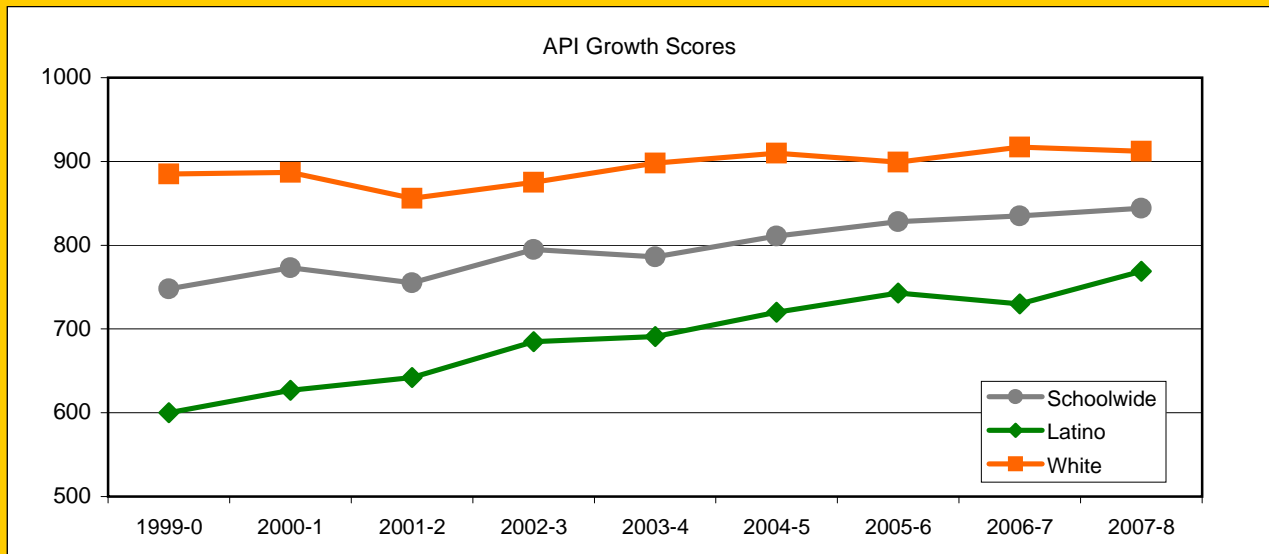


MATH



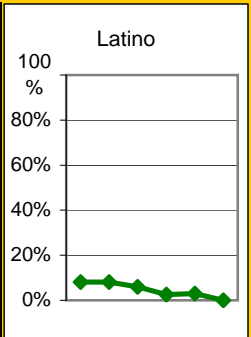
### Exceed State Academic Performance Index (API) Growth Goals

	Schoolwide		Latino		White	
	Base	Growth/ Goal Met	Base	Growth/ Goal Met	Base	Growth/ Goal Met
2003-4	794	786 Not Met	694	691 Not Met	896	898 Met
2004-5	783	811 Met	691	720 Met	889	910 Met
2005-6	811	8828 Met	720	743 Met	910	899 Met
2006-7	819	835 Met	725	730 Not Met	907	917 Met
2007-8	846	844 Met	750	769 Met	920	912 Met
2008-9	837		761		910	



### Increase Participation Across Demographic Spectrum in Advanced Courses

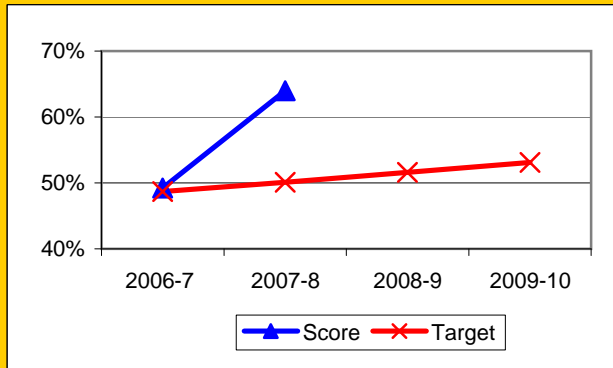
GATE (percent of all GATE students)	Latino		White		All Others	
	Number	Percent	Number	Percent	Number	Percent
2003-4	6	8.1%	63	85.1%	5	6.8%
2004-5	5	8.1%	54	87.1%	3	4.8%
2005-6	3	6.0%	43	86.0%	4	8.0%
2006-7	1	2.6%	36	92.3%	2	5.1%
2007-8	1	3.0%	31	93.9%	1	3.0%
2008-9	0	0.0%	19	100.0%	0	0.0%
2009-10						



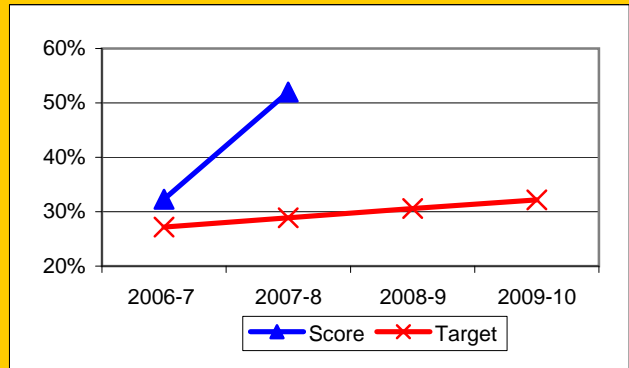
## Progress on English Learners Gaining One Proficiency Level Annually and Attaining English Language Proficiency

	Gained one Level on CELDT		Gained English Proficiency		
	Target	Score	Target	Score	
2003-4	51.0%		30.0%		
2004-5	51.5%	83.6%	30.7%	59.3%	
2005-6	52.0%	55.1%	31.4%		
2006-7	48.7%	49.2%	27.2%	32.3%	New Norms
2007-8	50.1%	64.0%	28.9%	52.0%	
2008-9	51.6%		30.6%		
2009-10	53.1%		32.2%		

Gained One Level On CELDT

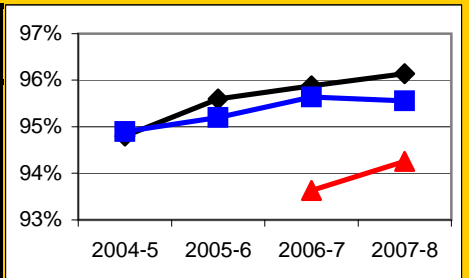


Attained English Proficiency



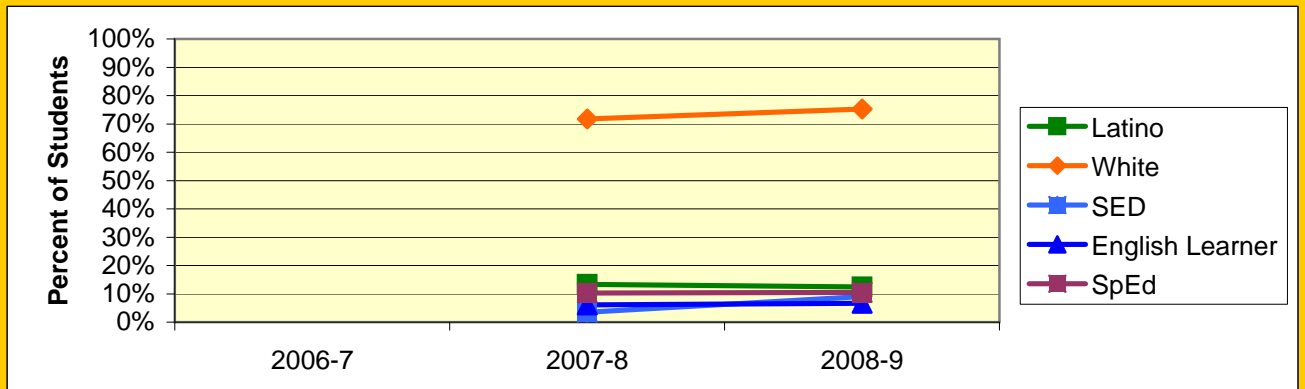
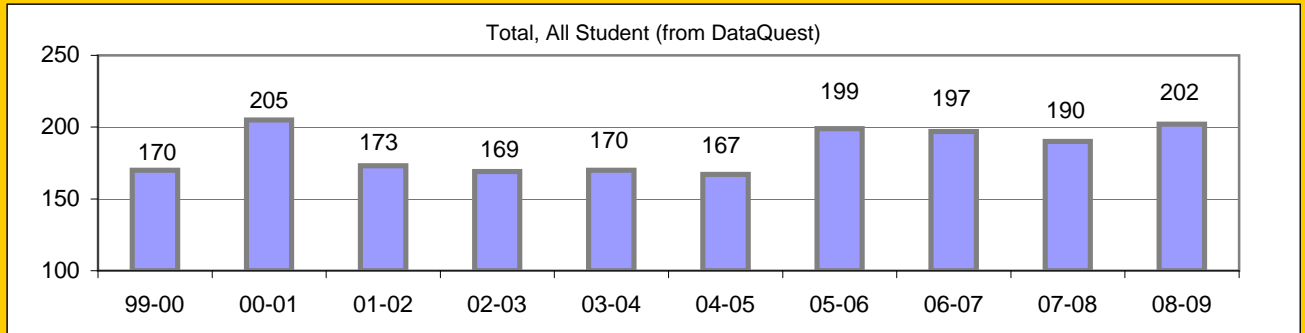
## Increase Efforts to Enhance Revenue

Attendance (Percent over year)	Lowest Month	Whole Year	District
2004-5		94.8%	94.9%
2005-6		95.6%	95.2%
2006-7	93.6%	95.9%	95.6%
2007-8	94.3%	96.1%	95.6%
2008-9			



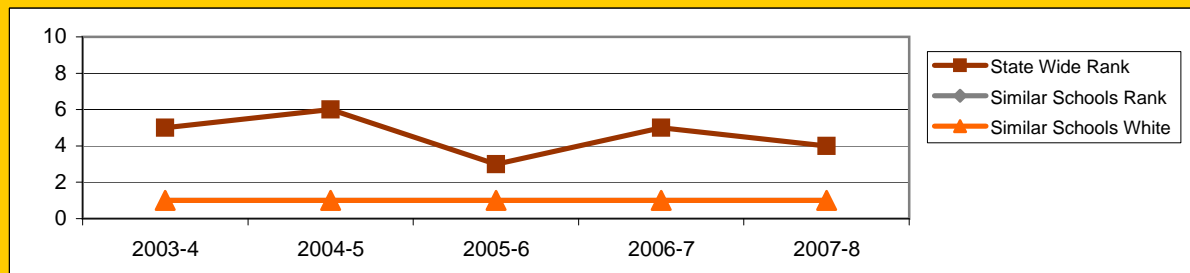
## Board Focus Goals: S B Charter (33) - May 2009

Demographics (K-5, 0809 Aeries)	Total	Female	Male	Latino	White	SED	English Learner	SpEd
Number	210	104	106	26	158	19	14	22
Percent of Total		49.5%	50.5%	12.4%	75.2%	9.0%	6.7%	10.5%



### Achieve a State Similar School Ranking of 8 or Higher (scale = 1-10)

	State Wide Rank	Similar Schools Rank	Similar Schools Latino	Similar Schools White	Similar Schools SED	Similar Schools EL	Similar Schools Disab
2003-4	5	1	NA	1	NA	NA	NA
2004-5	6	1	NA	1	NA	NA	NA
2005-6	3	1	NA	1	NA	NA	NA
2006-7	5	1	NA	1	NA	NA	NA
2007-8	4	1	NA	1	NA	NA	NA

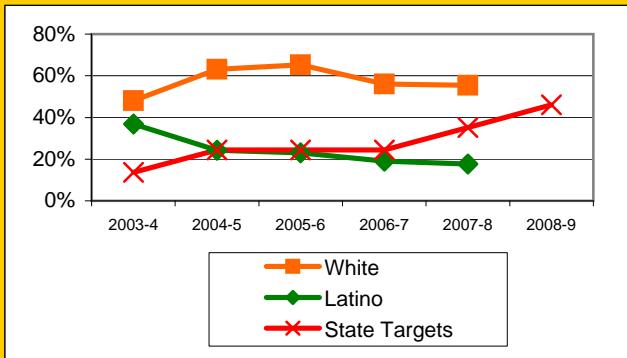


**Exceed Federal Adequate Yearly Progress (AYP) Accountability Goals** (Blue = Not enough students, Bold/underline/italic = Made by adjustment, Red = Did not pass

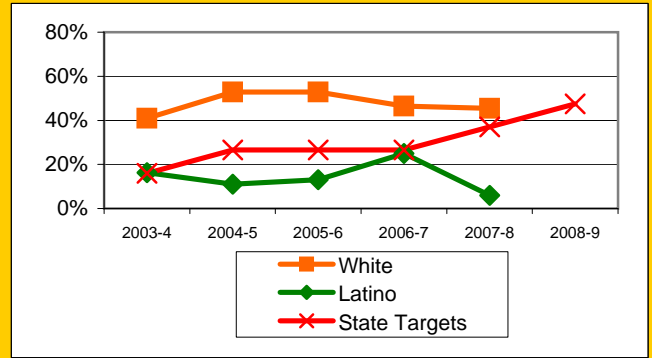
English Language Arts (ELA): Percent Proficient or Higher	State Targets	Schoolwide	Latino	White	Socio-Econ Disadv	English Learner	Student with Disab
2003-4	13.6%	45.4%	36.9%	48.1%	23.5%		5.2%
2004-5	24.4%	53.1%	24.3%	63.1%	30.4%		11.8%
2005-6	24.4%	51.9%	23.1%	65.2%	25.0%		7.1%
2006-7	24.4%	50.4%	19.0%	56.0%	18.8%		27.3%
2007-8	35.2%	52.0%	17.6%	55.4%			37.5%
2008-9	46.0%						
2009-10	56.8%						

Math: Percent Proficient or Higher	State Targets	Schoolwide	Latino	White	Socio-Econ Disadv	English Learner	Student with Disab
2003-4	16.0%	31.7%	16.2%	41.0%	11.7%		15.7%
2004-5	26.5%	40.4%	11.1%	52.9%	18.2%		14.3%
2005-6	26.5%	42.3%	13.0%	52.9%	12.5%		13.3%
2006-7	26.5%	42.4%	25.0%	46.4%	35.3%		30.8%
2007-8	37.0%	40.5%	5.9%	45.5%			25.0%
2008-9	47.5%						
2009-10	58.0%						

ELA

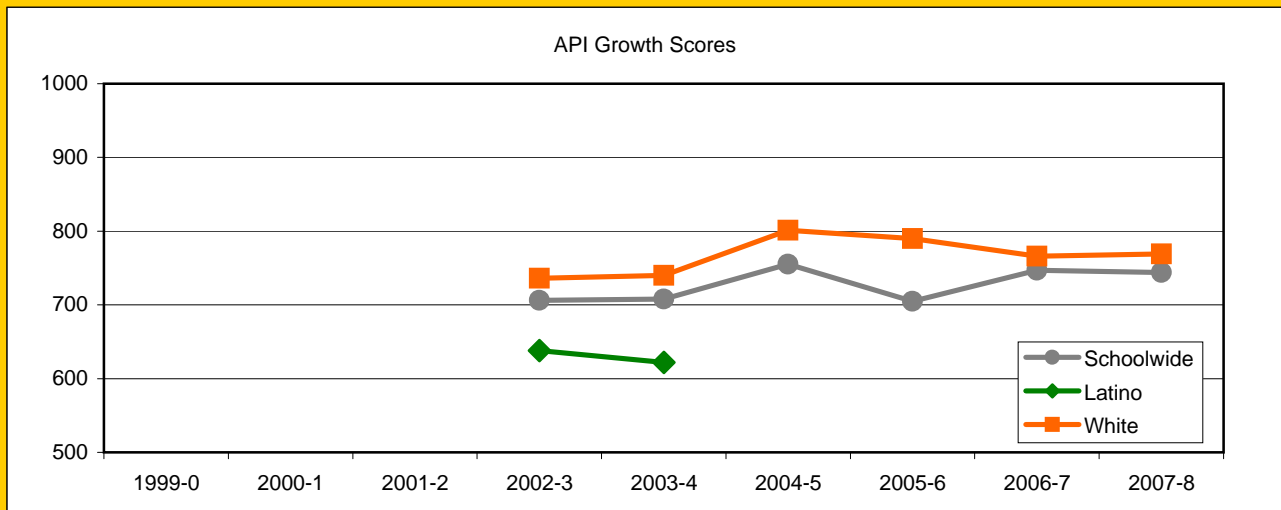


MATH



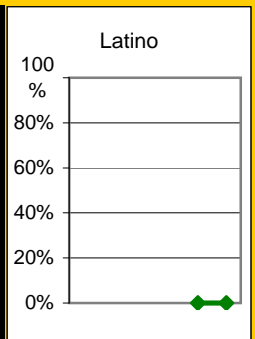
### Exceed State Academic Performance Index (API) Growth Goals

	Schoolwide		Latino		White	
	Base	Growth/ Goal Met	Base	Growth/ Goal Met	Base	Growth/ Goal Met
2003-4	686	708 Met	614	622 Met	713	740 Met
2004-5	706	755 Met			740	801 Met
2005-6	755	705 Not Met			801	790 Not Met
2006-7	703	747 Met			788	766 Not Met
2007-8	763	744 Not Met			784	769 Not Met
2008-9	739				768	



### Increase Participation Across Demographic Spectrum in Advanced Courses

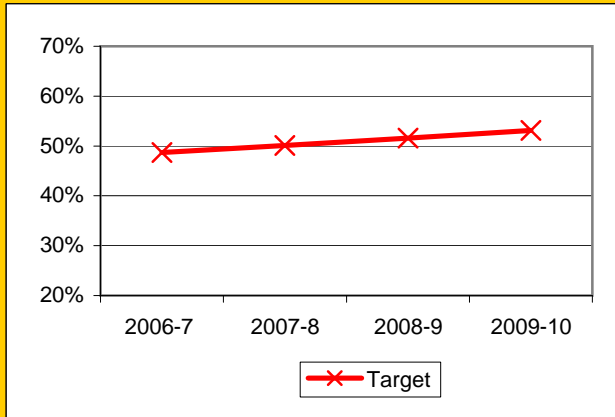
GATE (percent of all GATE students)	Latino		White		All Others	
	Number	Percent	Number	Percent	Number	Percent
2003-4						
2004-5						
2005-6						
2006-7						
2007-8	0	0.0%	1	100.0%	0	0.0%
2008-9	0	0.0%	0	0.0%	0	0.0%
2009-10						



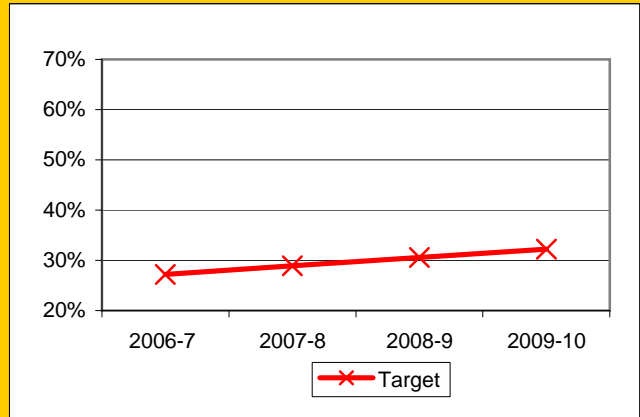
## Progress on English Learners Gaining One Proficiency Level Annually and Attaining English Language Proficiency

	Gained one Level on CELDT		Gained English Proficiency		
	Target	Score	Target	Score	
2003-4	51.0%		30.0%		
2004-5	51.5%		30.7%		
2005-6	52.0%		31.4%		
2006-7	48.7%		27.2%		New Norms
2007-8	50.1%		28.9%		
2008-9	51.6%		30.6%		
2009-10	53.1%		32.2%		

Gained One Level On CELDT

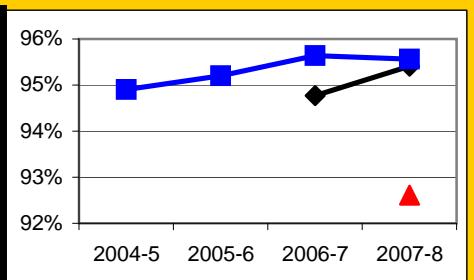


Attained English Proficiency



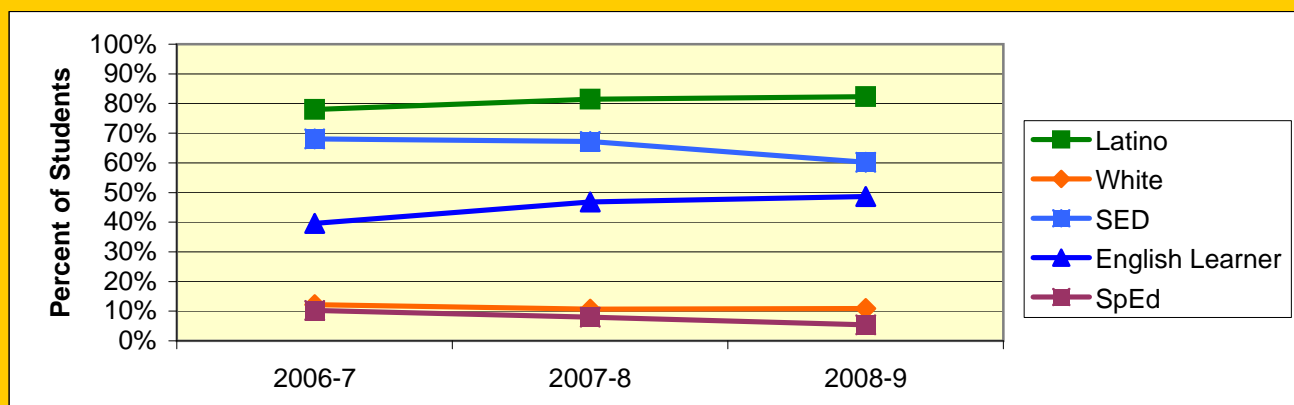
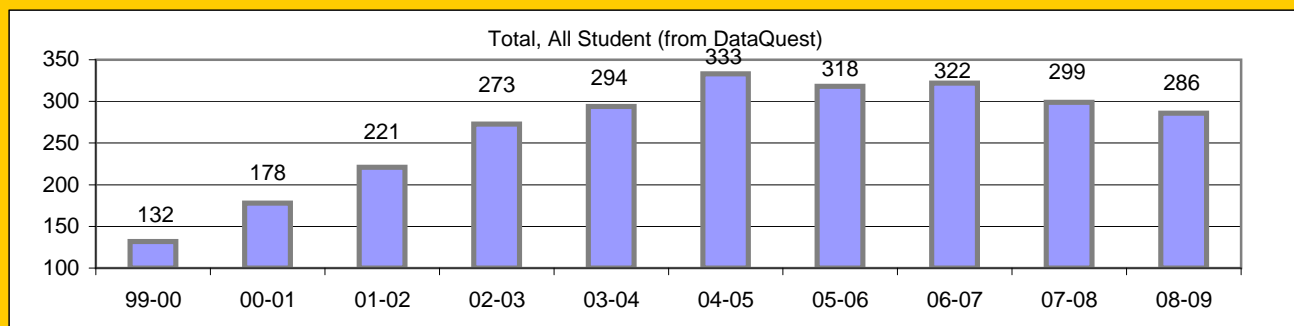
## Increase Efforts to Enhance Revenue

Attendance (Percent over year)	Lowest Month	Whole Year	District
2004-5			94.9%
2005-6			95.2%
2006-7		94.8%	95.6%
2007-8	92.6%	95.4%	95.6%
2008-9			



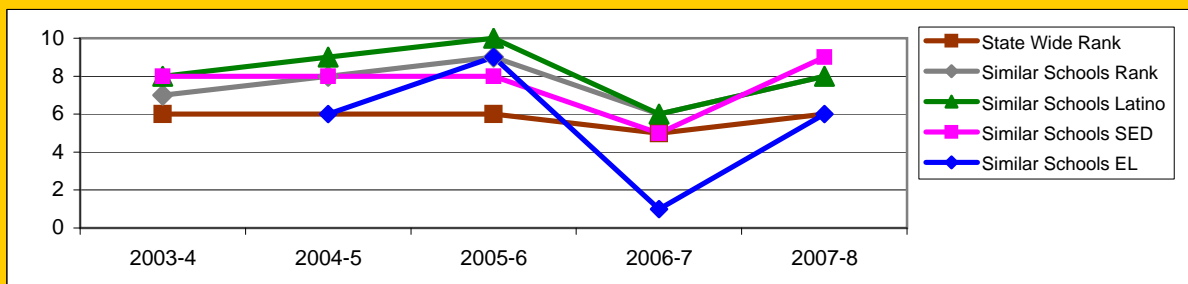
## Board Focus Goals: S B Community Academy (26) - May 2009

Demographics (K-6, 0809)	Total	Female	Male	Latino	White	SED	English Learner	SpEd
Number	294	144	150	242	32	177	143	16
Percent of Total		49.0%	51.0%	82.3%	10.9%	60.2%	48.6%	5.4%



### Achieve a State Similar School Ranking of 8 or Higher (scale = 1-10)

	State Wide Rank	Similar Schools Rank	Similar Schools Latino	Similar Schools White	Similar Schools SED	Similar Schools EL	Similar Schools Disab
2003-4	6	7	8	NA	8	NA	NA
2004-5	6	8	9	NA	8	6	NA
2005-6	6	9	10	NA	8	9	NA
2006-7	5	6	6	NA	5	1	NA
2007-8	6	8	8	NA	9	6	NA



Santa Barbara Community Academy Continued

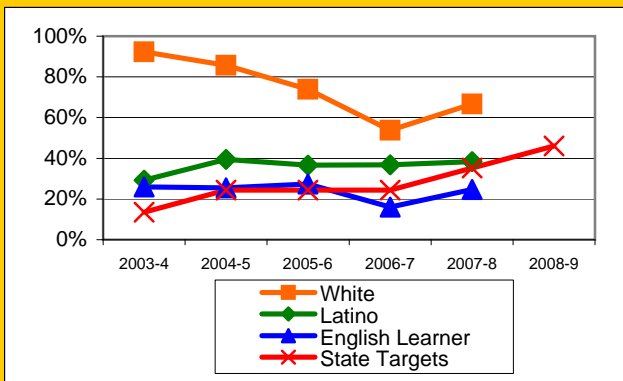
**Exceed Federal Adequate Yearly Progress (AYP) Accountability Goals** (Blue = Not enough students, Bold/underline/italic = Made by adjustment, Red = Did not pass

English Language Arts (ELA): Percent Proficient or Higher	State Targets	Schoolwide	Latino	White	Socio-Econ Disadv	English Learner	Stud with Disab
2003-4	13.6%	41.3%	29.2%	92.3%	30.8%	26.0%	13.3%
2004-5	24.4%	46.8%	39.5%	85.7%	41.6%	25.4%	5.9%
2005-6	24.4%	44.8%	36.7%	73.9%	33.3%	27.4%	11.1%
2006-7	24.4%	40.9%	36.8%	53.8%	32.9%	16.0%	18.2%
2007-8	35.2%	44.1%	38.4%	66.7%	36.8%	24.7%	37.9%
2008-9	46.0%						
2009-10	56.8%						

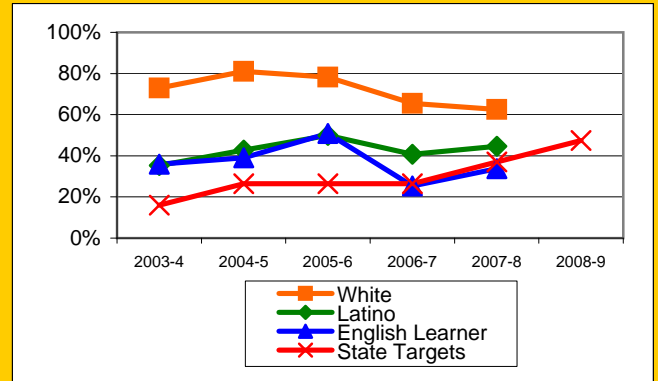
1 Mark

Math: Percent Proficient or Higher	State Targets	Schoolwide	Latino	White	Socio-Econ Disadv	English Learner	Stud with Disab
2003-4	16.0%	44.1%	35.3%	73.0%	37.3%	36.0%	13.3%
2004-5	26.5%	49.3%	42.8%	81.0%	43.2%	39.0%	11.8%
2005-6	26.5%	55.5%	50.0%	78.3%	47.7%	50.8%	29.6%
2006-7	26.5%	45.3%	40.7%	65.4%	36.5%	25.3%	22.7%
2007-8	37.0%	48.5%	44.7%	62.5%	43.8%	33.8%	30.0%
2008-9	47.5%						
2009-10	58.0%						

ELA

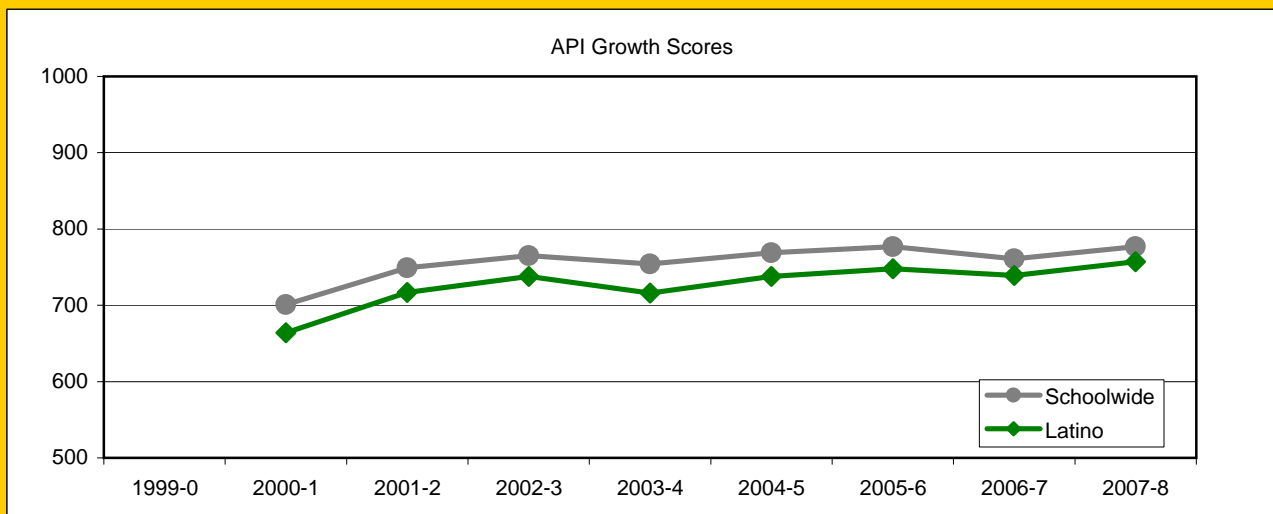


MATH



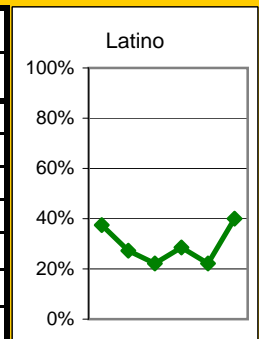
### Exceed State Academic Performance Index (API) Growth Goals

	Schoolwide		Latino		White	
	Base	Growth/ Goal Met	Base	Growth/ Goal Met	Base	Growth/ Goal Met
2003-4	766	754 Not Met	736	716 Not Met		
2004-5	749	769 Met	714	738 Met		
2005-6	769	777 Met	738	748 Met		
2006-7	779	761 Not Met	752	739 Not Met		
2007-8	761	777 Met	740	757 Met		
2008-9	778		759			



### Increase Participation Across Demographic Spectrum in Advanced Courses

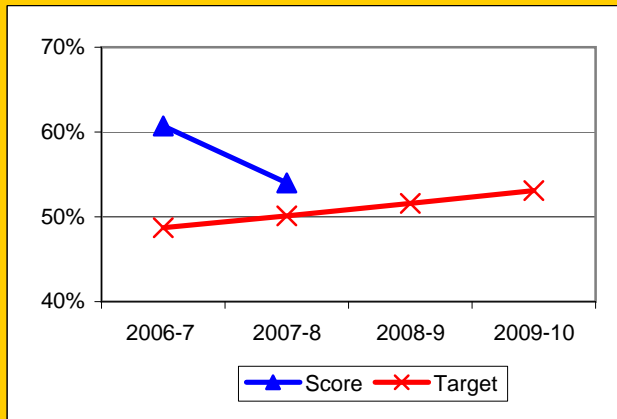
GATE (percent of all GATE students)	Latino		White		All Others	
	Number	Percent	Number	Percent	Number	Percent
2003-4	6	37.5%	8	50.0%	2	12.5%
2004-5	3	27.3%	6	54.5%	2	18.2%
2005-6	2	22.2%	4	44.4%	3	33.3%
2006-7	2	28.6%	3	42.9%	2	28.6%
2007-8	2	22.2%	5	55.6%	2	22.2%
2008-9	2	40.0%	2	40.0%	1	20.0%
2009-10						



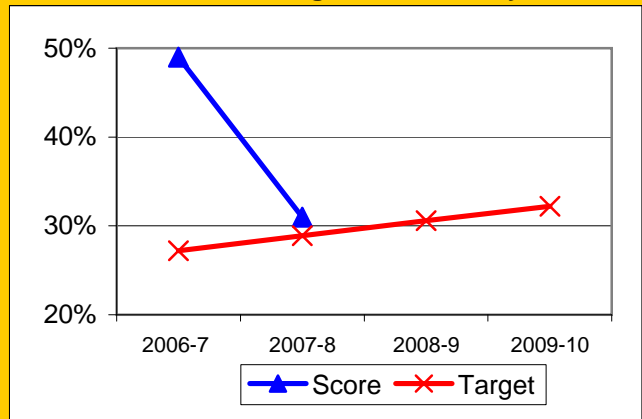
## Progress on English Learners Gaining One Proficiency Level Annually and Attaining English Language Proficiency

	Gained one Level on CELDT		Gained English Proficiency		
	Target	Score	Target	Score	
2003-4	51.0%		30.0%		
2004-5	51.5%	52.0%	30.7%	29.5%	
2005-6	52.0%	58.5%	31.4%	38.2%	
2006-7	48.7%	60.7%	27.2%	49.0%	New Norms
2007-8	50.1%	54.0%	28.9%	31.0%	
2008-9	51.6%		30.6%		
2009-10	53.1%		32.2%		

Gained One Level On CELDT

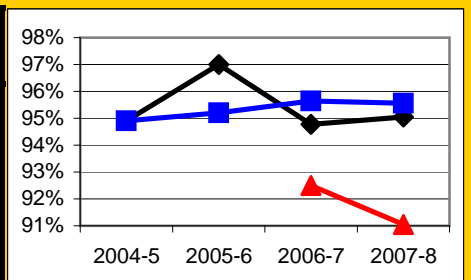


Attained English Proficiency



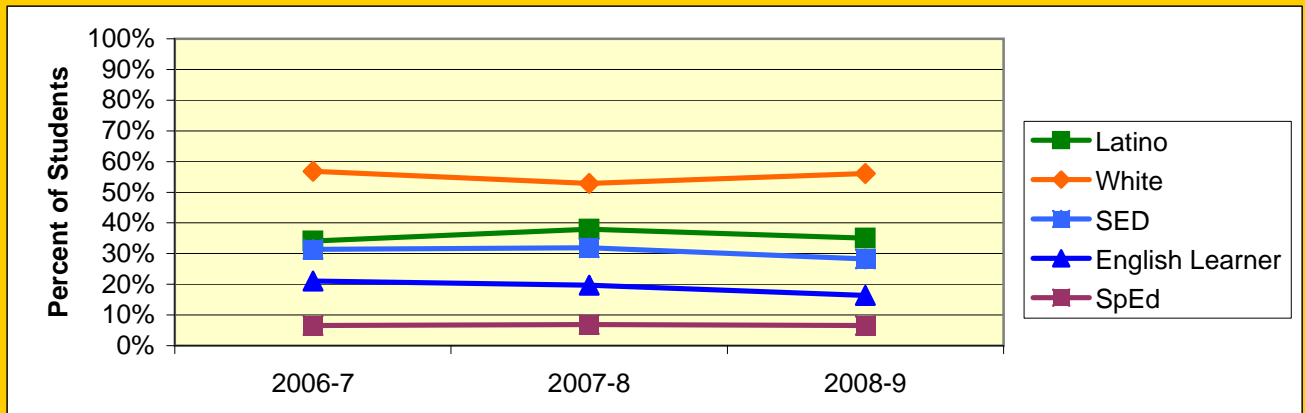
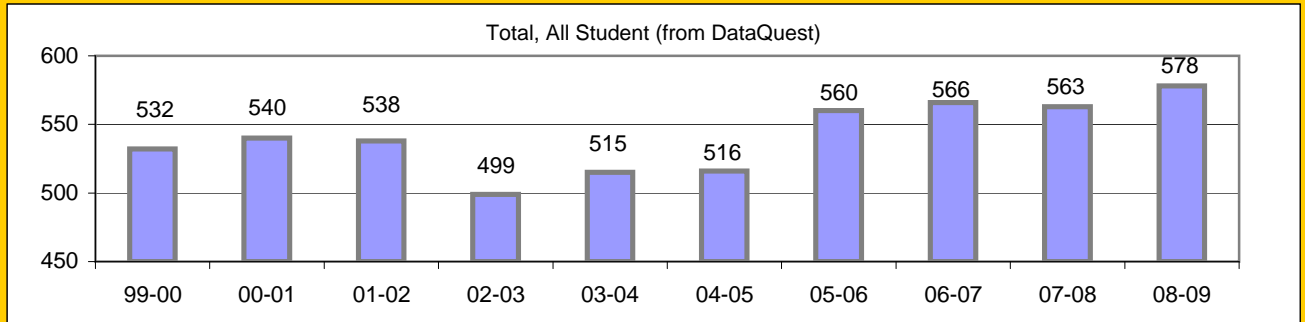
## Increase Efforts to Enhance Revenue

Attendance (Percent over year)	Lowest Month	Whole Year	District
2004-5		94.9%	94.9%
2005-6		97.0%	95.2%
2006-7	92.5%	94.8%	95.6%
2007-8	91.1%	95.1%	95.6%
2008-9			



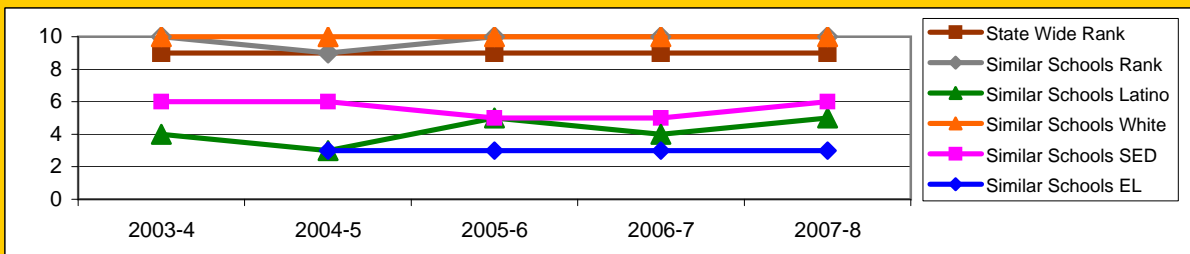
# Board Focus Goals: Washington Elementary (31) - May 2009

Demographics (K-6, 0809 Aeries)	Total	Female	Male	Latino	White	SED	English Learner	SpEd
Number	574	253	321	201	322	162	94	38
Percent of Total		44.1%	55.9%	35.0%	56.1%	28.2%	16.4%	6.6%



## Achieve a State Similar School Ranking of 8 or Higher (scale = 1-10)

	State Wide Rank	Similar Schools Rank	Similar Schools Latino	Similar Schools White	Similar Schools SED	Similar Schools EL	Similar Schools Disab
2003-4	9	10	4	10	6	NA	NA
2004-5	9	9	3	10	6	3	NA
2005-6	9	10	5	10	5	3	NA
2006-7	9	10	4	10	5	3	NA
2007-8	9	10	5	10	6	3	NA

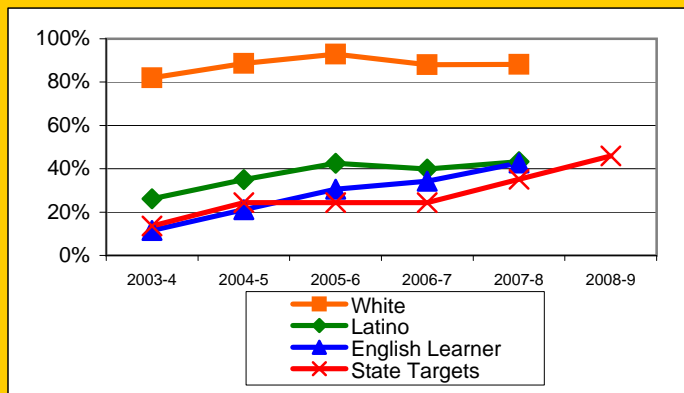


**Exceed Federal Adequate Yearly Progress (AYP) Accountability Goals** (Blue = Not enough students, Bold/underline/italic = Made by adjustment, Red = Did not pass

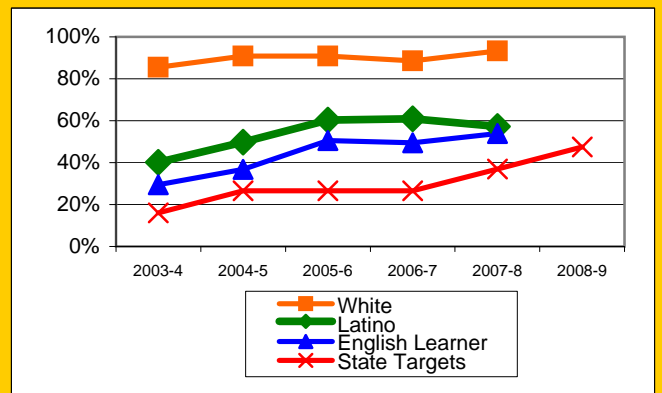
English Language Arts (ELA): Percent Proficient or Higher	State Targets	Schoolwide	Latino	White	Socio-Econ Disadv	English Learner	Student with Disability
2003-4	13.6%	59.2%	26.2%	82.0%	26.1%	11.5%	14.8%
2004-5	24.4%	65.3%	35.0%	88.6%	35.3%	<u>21.1%</u>	18.2%
2005-6	24.4%	70.0%	42.5%	92.9%	39.3%	30.6%	22.7%
2006-7	24.4%	69.2%	39.9%	88.1%	39.7%	34.2%	22.7%
2007-8	35.2%	70.7%	43.3%	88.2%	41.7%	42.7%	33.3%
2008-9	46.0%						
2009-10	56.8%						

Math: Percent Proficient or Higher	State Targets	Schoolwide	Latino	White	Socio-Econ Disadv	English Learner	Student with Disability
2003-4	16.0%	66.5%	40.1%	85.5%	41.0%	29.4%	18.5%
2004-5	26.5%	73.5%	49.7%	90.9%	51.1%	36.8%	22.7%
2005-6	26.5%	76.8%	60.3%	90.8%	56.4%	50.6%	36.4%
2006-7	26.5%	76.9%	60.9%	88.6%	57.3%	49.4%	31.8%
2007-8	37.0%	79.1%	57.3%	93.3%	56.1%	53.9%	40.9%
2008-9	47.5%						
2009-10	58.0%						

ELA

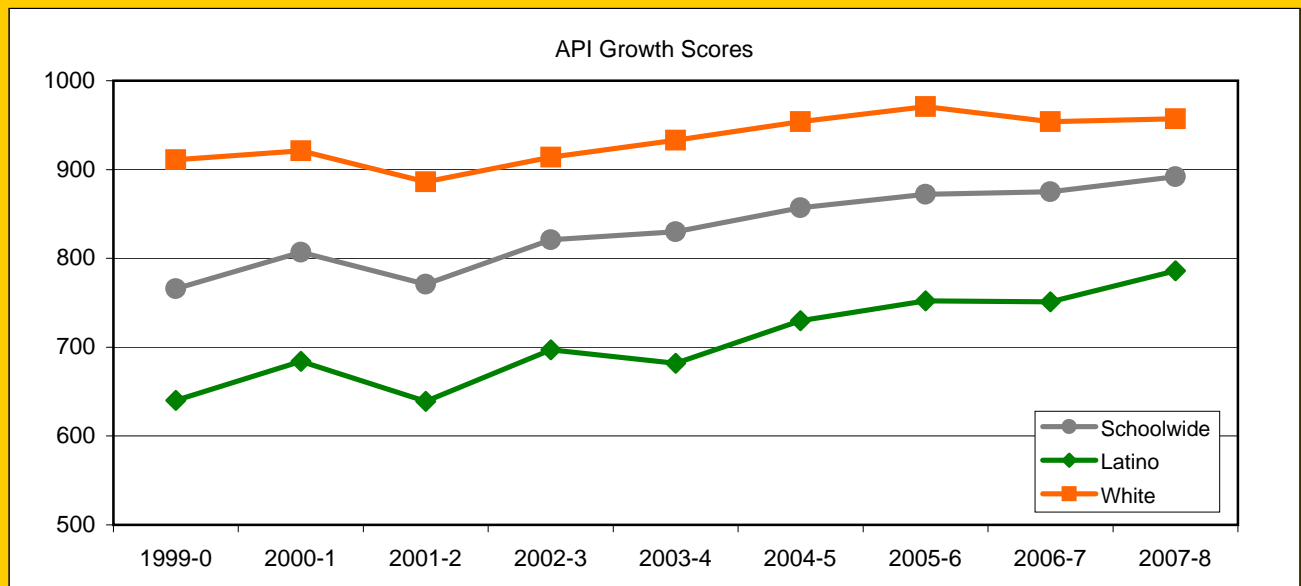


MATH



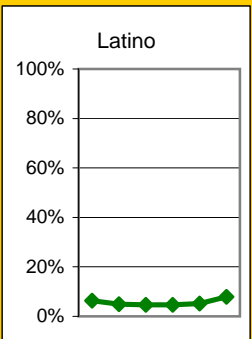
## Exceed State Academic Performance Index (API) Growth Goals

	Schoolwide		Latino		White	
	Base	Growth/ Goal Met	Base	Growth/ Goal Met	Base	Growth/ Goal Met
2003-4	812	830 Met	680	682 Met	915	933 Met
2004-5	826	857 Met	681	730 Met	929	954 Met
2005-6	857	872 Met	730	752 Met	954	971 Met
2006-7	873	875 Met	757	751 Not Met	969	954 Met
2007-8	884	892 Met	764	786 Met	958	957 Met
2008-9	886		784		953	



## Increase Participation Across Demographic Spectrum in Advanced Courses

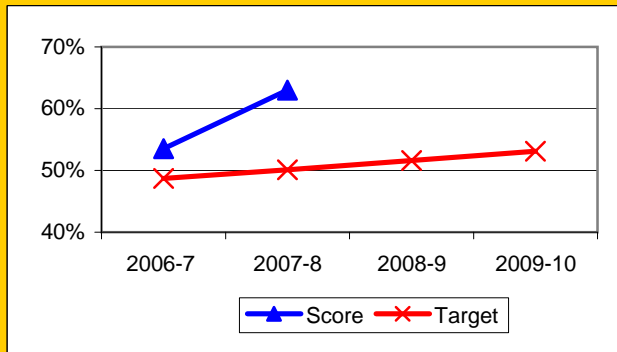
GATE (percent of all GATE students)	Latino		White		All Others	
	Number	Percent	Number	Percent	Number	Percent
2003-4	6	6.3%	75	78.9%	14	14.7%
2004-5	4	4.9%	65	79.3%	13	15.9%
2005-6	4	4.7%	67	78.8%	14	16.5%
2006-7	4	4.7%	67	77.9%	15	17.4%
2007-8	4	5.1%	60	76.9%	14	17.9%
2008-9	4	7.8%	39	76.5%	8	15.7%
2009-10						



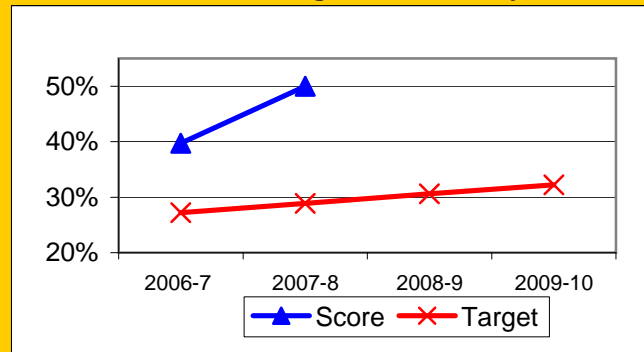
## Progress on English Learners Gaining One Proficiency Level Annually and Attaining English Language Proficiency

	Gained one Level on CELDT		Gained English Proficiency		
	Target	Score	Target	Score	
2003-4	51.0%		30.0%		
2004-5	51.5%	66.0%	30.7%	55.1%	
2005-6	52.0%	56.1%	31.4%	32.5%	
2006-7	48.7%	53.5%	27.2%	39.7%	New Norms
2007-8	50.1%	63.0%	28.9%	50.0%	
2008-9	51.6%		30.6%		
2009-10	53.1%		32.2%		

Gained One Level On CELDT

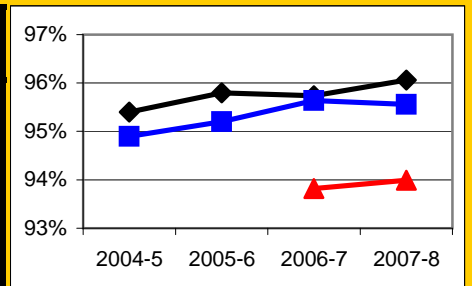


Attained English Proficiency



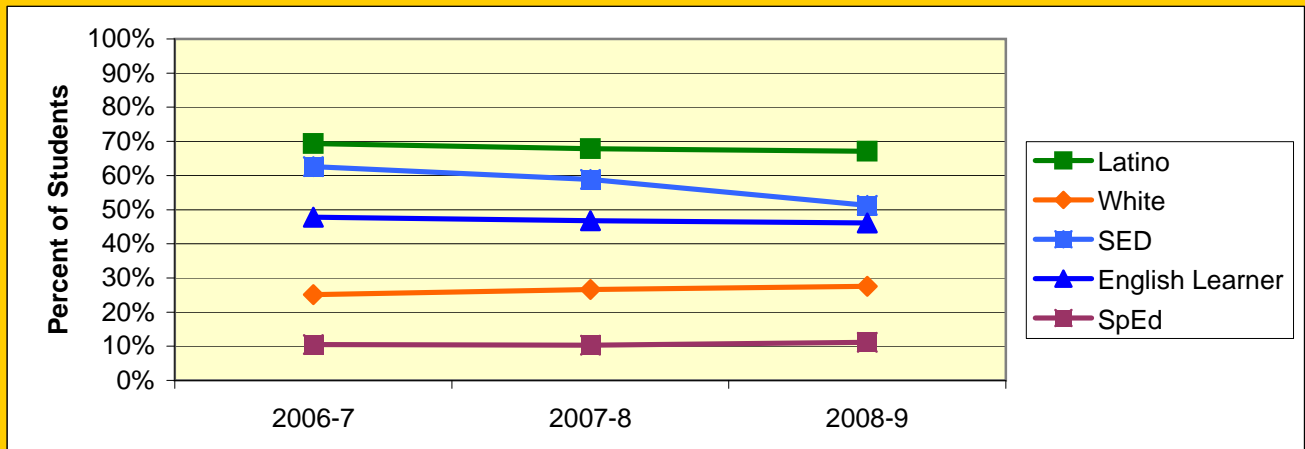
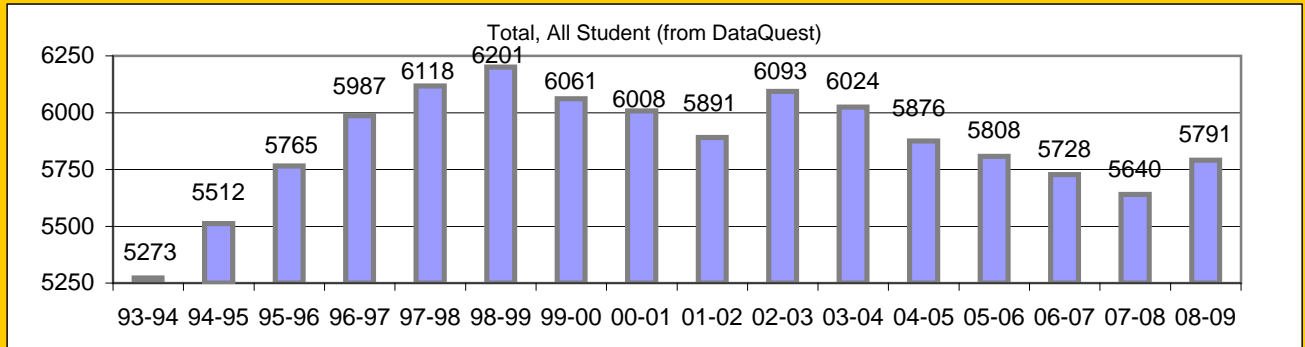
## Increase Efforts to Enhance Revenue

Attendance (Percent over year)	Lowest Month	Whole Year	District
2004-5		95.4%	94.9%
2005-6		95.8%	95.2%
2006-7	93.8%	95.7%	95.6%
2007-8	94.0%	96.1%	95.6%
2008-9			



## Board Focus Goals: Elementary District - May 2009

Demographics (K-8, 0809 Aeries)	Total	Female	Male	Latino	White	SED	English Learner	SpEd
Number	5723	2759	2964	3843	1578	2933	2641	636
Percent of Total		48.2%	51.8%	67.2%	27.6%	51.2%	46.1%	11.1%



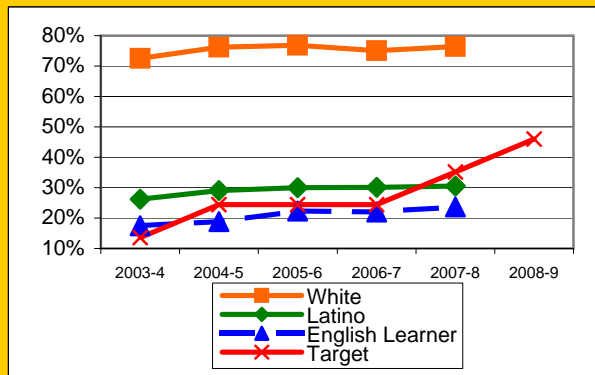
Elementary District Continued

**Exceed Federal Adequate Yearly Progress (AYP) Accountability Goals** (Blue = Not enough students, Bold/underline/italic = Made by adjustment, Red = Did not pass

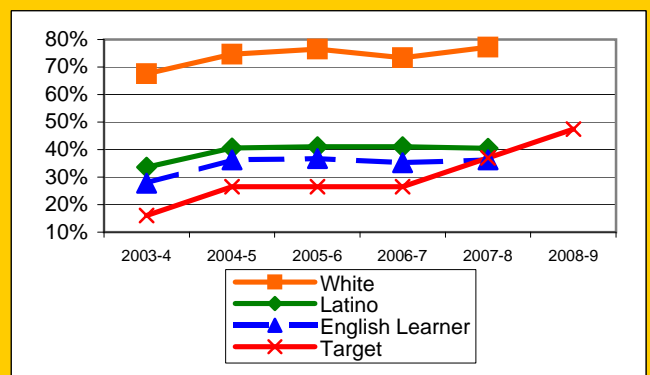
English Language Arts (ELA): Percent Proficient or Higher	State Targets	Schoolwide	Latino	White	Socio-Econ Disadv	English Learner	Stud with Disab	
2003-4	13.6%	39.8%	26.2%	72.5%	24.7%	17.5%	9.8%	Mark 1
2004-5	24.4%	41.0%	29.1%	76.2%	27.7%	18.8%	10.1%	Mark 2
2005-6	24.4%	41.3%	30.0%	76.8%	28.9%	22.3%	11.8%	PI Y1
2006-7	24.4%	40.9%	30.1%	75.1%	29.0%	22.0%	13.6%	PI Y2
2007-8	35.2%	42.5%	30.5%	76.4%	30.2%	23.7%	24.1%	PI Y3
2008-9	46.0%							PI Y3
2009-10	56.8%							

Math: Percent Proficient or Higher	State Targets	Schoolwide	Latino	White	Socio-Econ Disadv	English Learner	Stud with Disab	
2003-4	16.0%	43.3%	33.6%	67.6%	32.6%	27.8%	12.9%	Mark 1
2004-5	26.5%	49.1%	40.6%	74.7%	39.7%	36.3%	12.9%	Mark 2
2005-6	26.5%	49.6%	41.1%	76.5%	40.1%	36.7%	18.5%	PI Y1
2006-7	26.5%	48.7%	41.0%	73.4%	39.6%	35.2%	18.9%	PI Y2
2007-8	37.0%	49.9%	40.5%	77.2%	40.9%	36.3%	29.8%	PI Y3
2008-9	47.5%							PI Y3
2009-10	58.0%							

ELA



Math

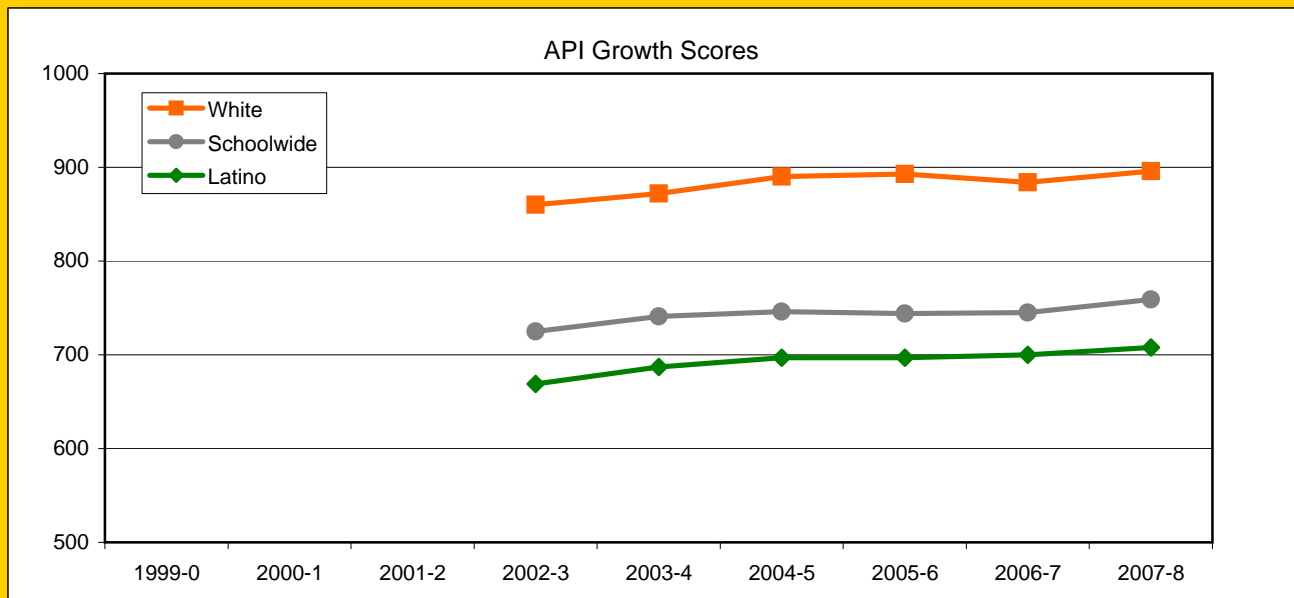


Elementary District Continued

### Exceed State Academic Performance Index (API) Growth Goals

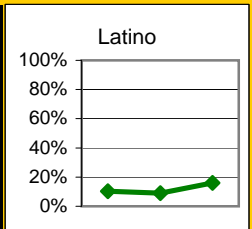
Districts have no "Met" or "Not Met" status

	Schoolwide		Latino		White	
	Base	Growth/Goal Met	Base	Growth/Goal Met	Base	Growth/Goal Met
2003-4	719	741	662	687	857	872
2004-5	738	746	686	697	866	890
2005-6	746	744	697	697	890	893
2006-7	744	745	697	700	891	884
2007-8	759	759	714	708	894	896
2008-9	755		707		892	



### Increase Participation Across Demographic Spectrum in Advanced Courses (Percent of GATE students within GATE population)

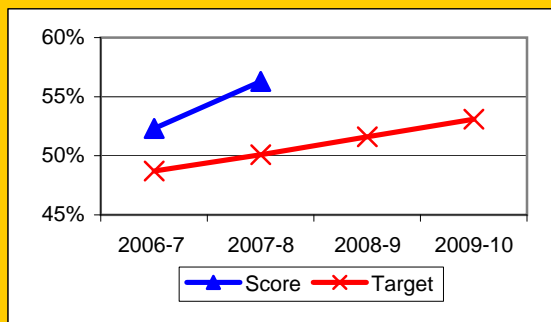
GATE (percent of all GATE students)	Latino		White		All Others	
	Number	Percent	Number	Percent	Number	Percent
2006-7	28	10.3%	211	77.9%	32	11.8%
2007-8	22	9.0%	197	80.4%	26	10.6%
2008-9	42	16.0%	196	74.8%	24	9.2%
2009-10						



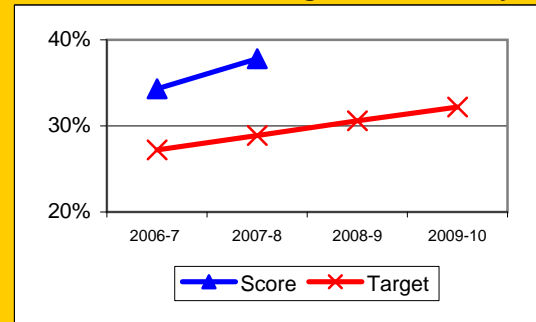
## Progress on English Learners Gaining One Proficiency Level Annually and Attaining English Language Proficiency

	Gained one Level on CELDT		Gained English Proficiency	
	Target	Score	Target	Score
2003-4	51.0%	66.7%	30.0%	43.2%
2004-5	51.5%	58.0%	30.7%	39.2%
2005-6	52.0%	57.9%	31.4%	38.0%
2006-7	48.7%	52.3%	27.2%	34.3%
2007-8	50.1%	56.3%	28.9%	37.8%
2008-9	51.6%		30.6%	
2009-10	53.1%		32.2%	

Gained One Level On CELDT



Attained English Proficiency



## Increase Efforts to Enhance Revenue

Attendance (Percent over year)	Lowest Month	District
2004-5		94.9%
2005-6		95.2%
2006-7	94.0%	95.6%
2007-8	93.6%	95.6%
2008-9		

