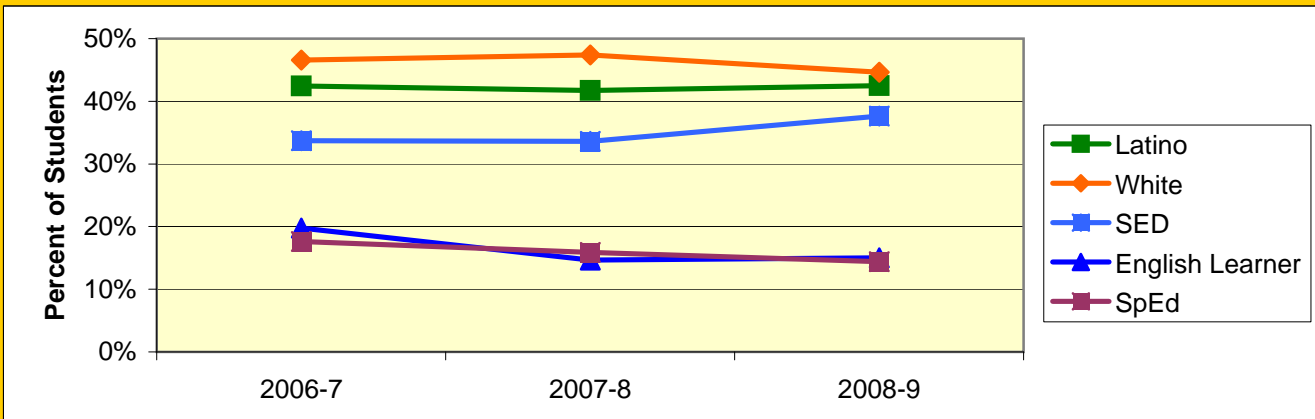
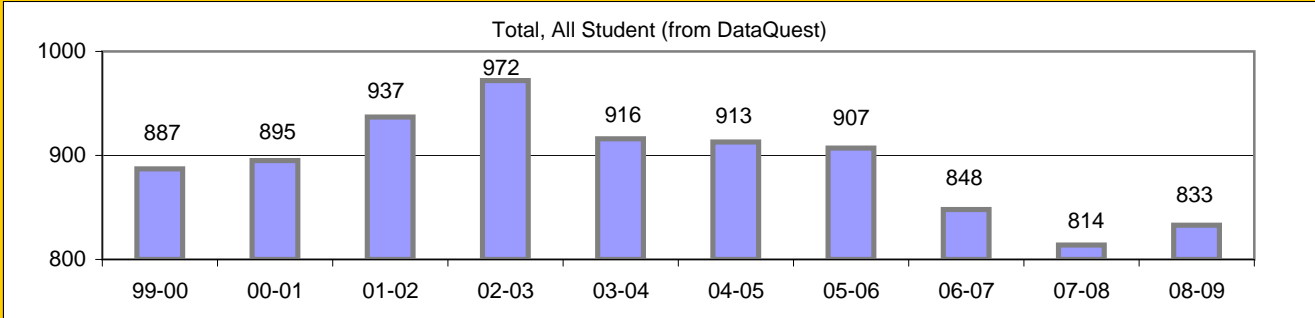


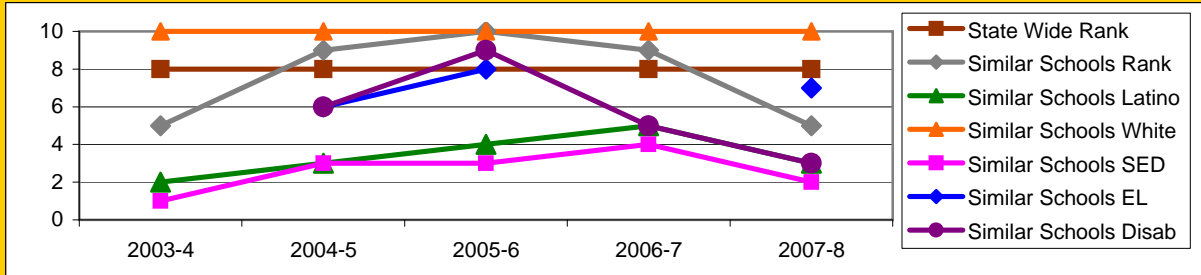
Board Focus Goals: Goleta Valley Junior High (6) - May 2009

Demographics (7-8, 0809 Aeries)	Total	Female	Male	Latino	White	SED	English Learner	SpEd
Number	847	409	438	360	378	319	127	122
Percent of Total		48.3%	51.7%	42.5%	44.6%	37.7%	15.0%	14.4%



Achieve a State Similar School Ranking of 8 or Higher (scale = 1-10)

	State Wide Rank	Similar Schools Rank	Similar Schools Latino	Similar Schools White	Similar Schools SED	Similar Schools EL	Similar Schools Disab
2003-4	8	5	2	10	1	NA	NA
2004-5	8	9	3	10	3	6	6
2005-6	8	10	4	10	3	8	9
2006-7	8	9	5	10	4	NA	5
2007-8	8	5	3	10	2	7	3

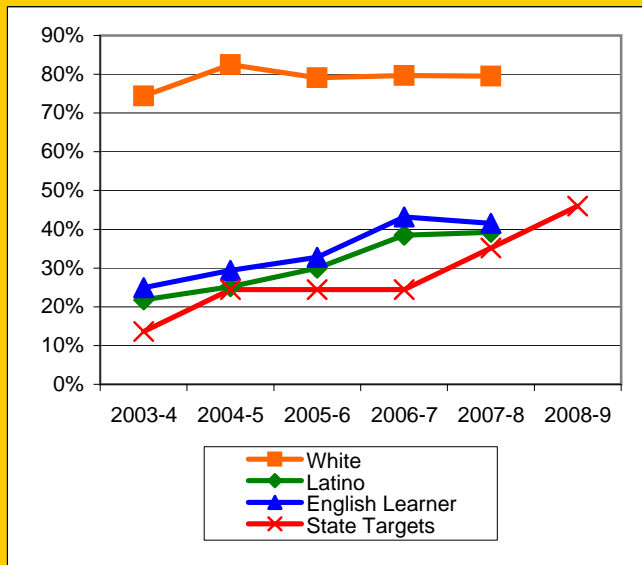


Exceed Federal Adequate Yearly Progress (AYP) Accountability Goals (Blue = Not enough students, **Bold/underline/italic** = Made by adjustment, **Red** = Did not pass)

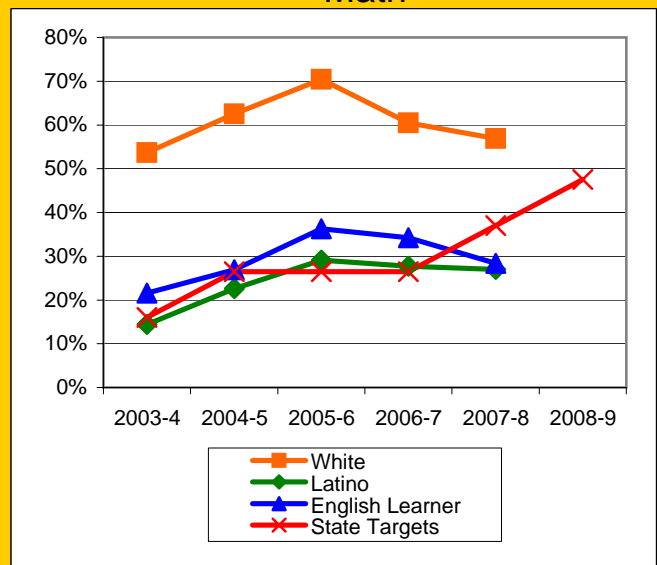
English Language Arts (ELA): Percent Proficient or Higher (Based on 10th grade Exit Exam (CAHSEE), Federal Cut Points)	State Targets	Schoolw ide	Latino	White	Socio- Econ Disadv	English Learner	Stud with Disab	
2003-4	13.6%	52.6%	21.8%	74.4%	19.8%	24.9%	8.9%	
2004-5	24.4%	59.4%	25.2%	82.5%	25.0%	29.4%	12.2%	
2005-6	24.4%	58.7%	30.0%	79.1%	26.6%	32.8%	16.1%	
2006-7	24.4%	63.9%	38.5%	79.7%	34.4%	43.2%	19.8%	Mark 1
2007-8	35.2%	62.6%	39.2%	79.5%	34.1%	41.5%	12.7%	Mark 2
2008-9	46.0%							PI Y1

Math: Percent Proficient or Higher (Based on 10th grade Exit Exam (CAHSEE), Federal Cut Points)	State Targets	Schoolw ide	Latino	White	Socio- Econ Disadv	English Learner	Stud with Disab	
2003-4	16.0%	39.0%	14.4%	53.7%	13.8%	21.6%	3.3%	
2004-5	26.5%	47.4%	22.6%	62.5%	21.6%	26.9%	9.1%	
2005-6	26.5%	54.9%	29.1%	70.4%	26.6%	36.3%	19.8%	
2006-7	26.5%	49.0%	27.7%	60.5%	26.6%	34.2%	10.8%	
2007-8	37.0%	45.5%	27.0%	56.9%	22.6%	28.4%	7.9%	
2008-9	47.5%							PI Y1

ELA

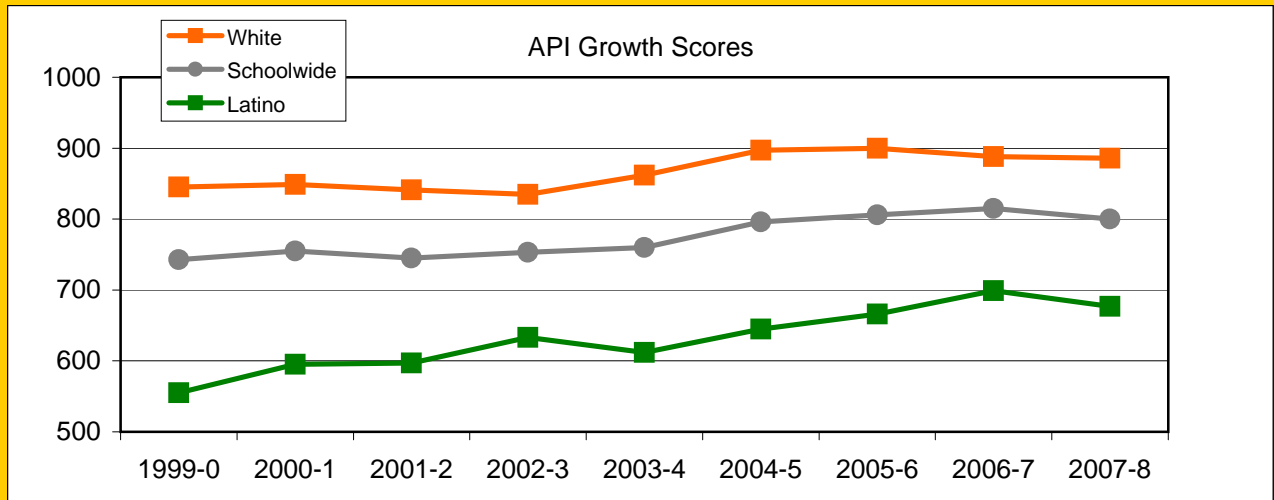


Math



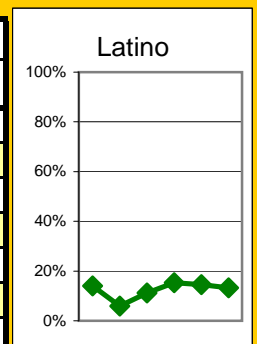
Exceed State Academic Performance Index (API) Growth Goals

	Schoolwide		Latino		White	
	Base	Growth/ Goal Met	Base	Growth/ Goal Met	Base	Growth/ Goal Met
2003-4	753	760 Met	634	612 Not Met	838	862 Met
2004-5	761	796 Met	616	645 Met	860	897 Met
2005-6	796	806 Met	645	666 Met	897	900 Met
2006-7	810	815 Met	670	699 Met	903	888 Met
2007-8	815	800 Met	699	677 Not Met	888	886 Met
2008-9	817		704		888	



Increase Participation Across Demographic Spectrum in Advanced Courses

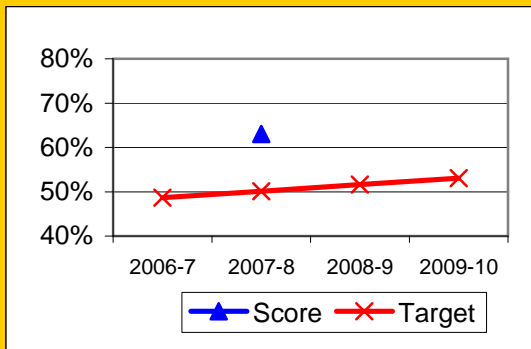
GATE (percent of all GATE students)	Latino		White		All Others	
	Number	Percent	Number	Percent	Number	Percent
2003-4	17	14.0%	83	68.6%	21	17.4%
2004-5	13	5.9%	167	75.9%	40	18.2%
2005-6	25	11.2%	155	69.5%	43	19.3%
2006-7	33	15.3%	150	69.8%	32	14.9%
2007-8	31	14.6%	148	69.5%	34	16.0%
2008-9	30	13.3%	152	67.3%	44	19.5%
2009-10						



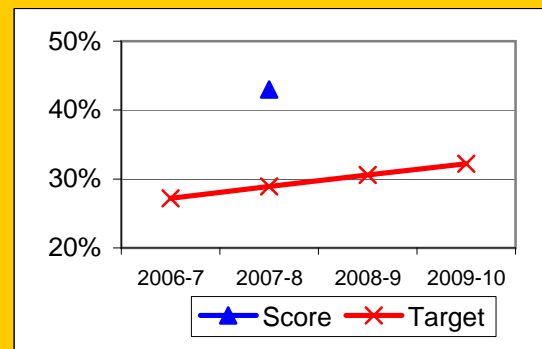
Progress on English Learners Gaining One Proficiency Level Annually and Attaining English Language Proficiency

	Gained One Level On CELDT		Attained English Proficiency		
	Target	Score	Target	Score	
2003-4	51.0%		30.0%		
2004-5	51.5%	84.7%	30.7%	52.2%	
2005-6	52.0%	84.3%	31.4%	68.4%	
2006-7	48.7%		27.2%		New Norms
2007-8	50.1%	63.0%	28.9%	43.0%	
2008-9	51.6%		30.6%		
2009-10	53.1%		32.2%		

Gained One Level On CELDT

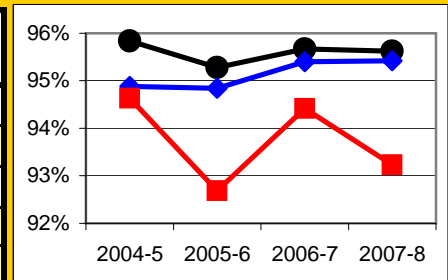


Attained English Proficiency



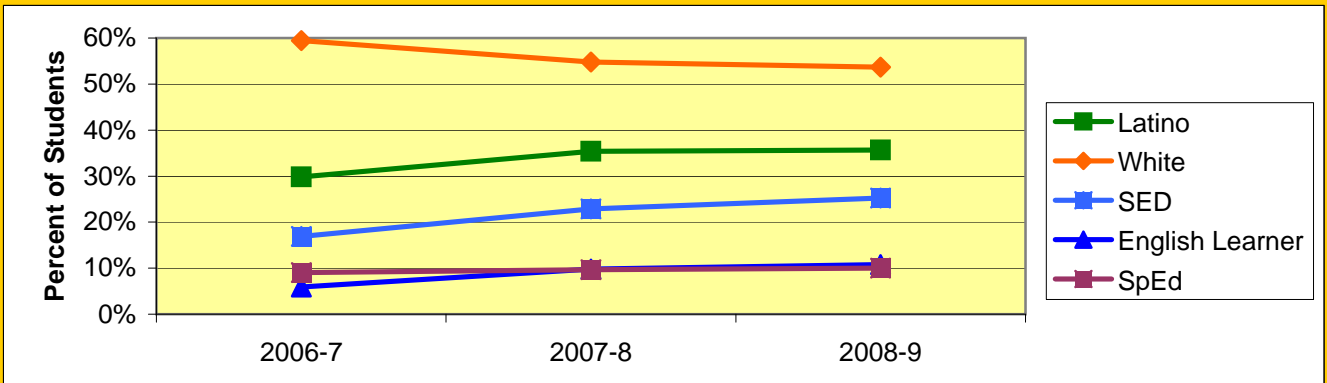
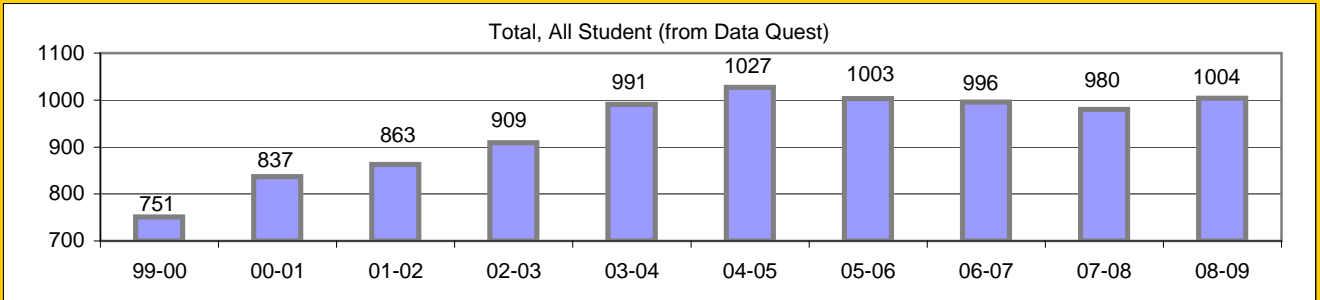
Increase Efforts to Enhance Revenue

Attendance (Percent over year)	Lowest Month	Whole Year	District (Jr.)
2004-5	94.6%	95.8%	94.9%
2005-6	92.7%	95.3%	94.8%
2006-7	94.4%	95.7%	95.4%
2007-8	93.2%	95.6%	95.4%
2008-9			



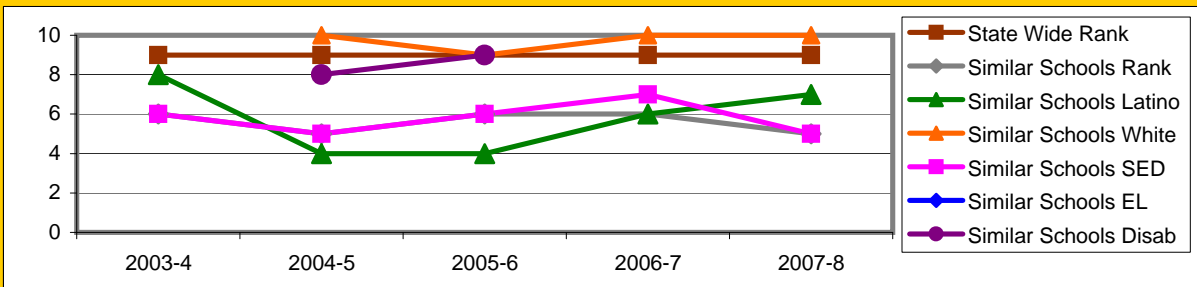
Board Focus Goals: La Colina Junior High School (1) - May 2009

Demographics (7-8, 0809 Aeries)	Total	Female	Male	Latino	White	SED	English Learner	SpEd
Number	999	534	465	356	536	252	108	100
Percent of Total		53.5%	46.5%	35.6%	53.7%	25.2%	10.8%	10.0%



Achieve a State Similar School Ranking of 8 or Higher (scale = 1-10)

	State Wide Rank	Similar Schools Rank	Similar Schools Latino	Similar Schools White	Similar Schools SED	Similar Schools EL	Similar Schools Disab
2003-4	9	6	8	NA	6	NA	NA
2004-5	9	5	4	10	5	NA	8
2005-6	9	6	4	9	6	7	9
2006-7	9	6	6	10	7	NA	NA
2007-8	9	5	7	10	5	NA	NA

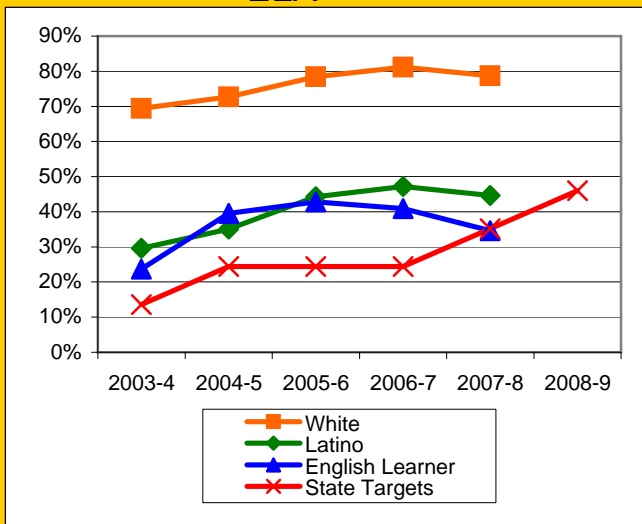


Exceed Federal Adequate Yearly Progress (AYP) Accountability Goals (Blue = Not enough students, **Bold/underline/italic** = Made by adjustment, **Red** = Did not pass)

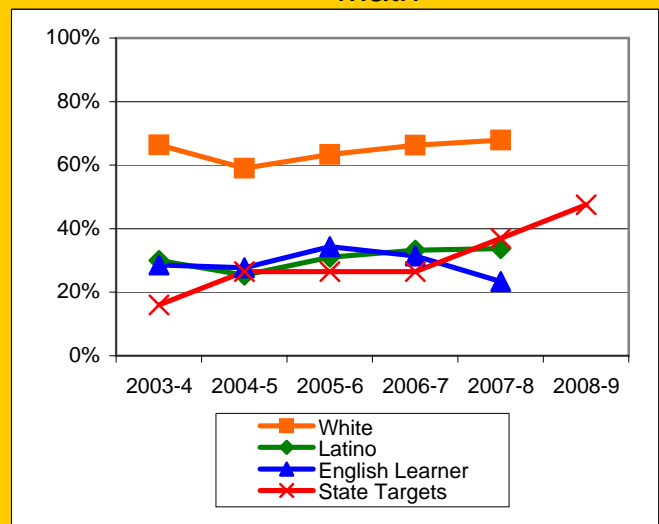
English Language Arts (ELA): Percent Proficient or Higher (Based on 10th grade Exit Exam (CAHSEE), Federal Cut Points)	State Targets	Schoolwide	Latino	White	Socio- Econ Disadv	English Learner	Stud with Disab
2003-4	13.6%	58.3%	29.6%	69.4%	26.8%	23.7%	14.4%
2004-5	24.4%	62.5%	35.1%	72.7%	33.1%	39.5%	25.9%
2005-6	24.4%	68.6%	44.3%	78.4%	42.9%	42.8%	17.6%
2006-7	24.4%	69.8%	47.2%	81.2%	43.6%	40.9%	21.5%
2007-8	35.2%	65.7%	44.6%	78.7%	39.7%	34.6%	12.8%
2008-9	46.0%						

Math: Percent Proficient or Higher (Based on 10th grade Exit Exam (CAHSEE), Federal Cut Points)	State Targets	Schoolwide	Latino	White	Socio- Econ Disadv	English Learner	Stud with Disab
2003-4	16.0%	56.3%	30.0%	66.4%	31.4%	28.6%	14.8%
2004-5	26.5%	49.8%	25.4%	59.0%	24.9%	27.7%	24.1%
2005-6	26.5%	54.4%	31.0%	63.3%	35.1%	34.3%	9.9%
2006-7	26.5%	56.6%	33.2%	66.3%	30.4%	31.4%	15.2%
2007-8	37.0%	55.7%	33.7%	67.9%	33.0%	23.4%	12.8%
2008-9	47.5%						

ELA

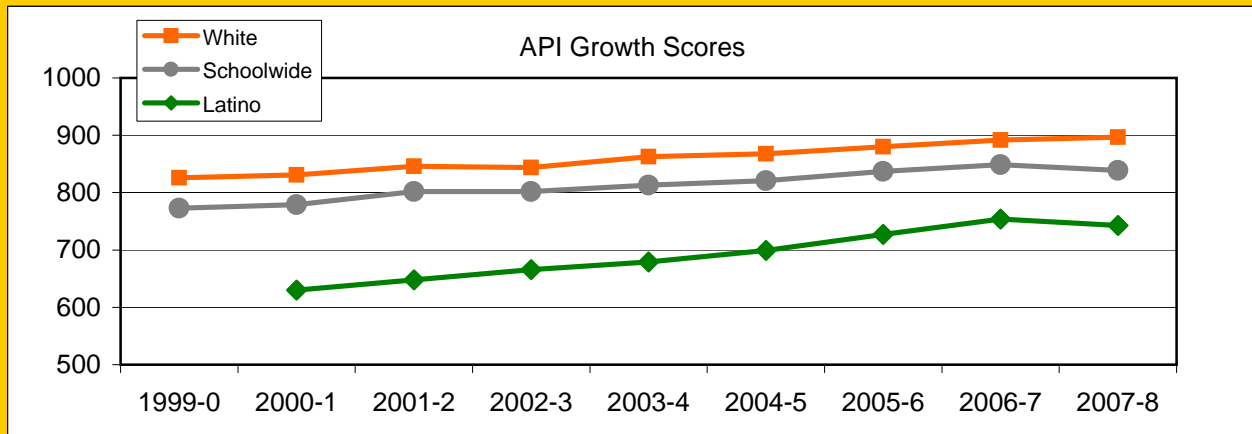


Math



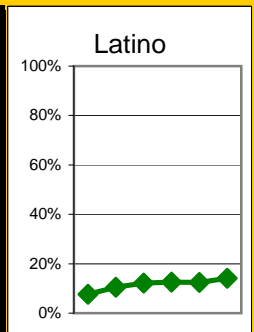
Exceed State Academic Performance Index (API) Growth Goals

	Schoolwide		Latino		White	
	Base	Growth/ Goal Met	Base	Growth/ Goal Met	Base	Growth/ Goal Met
2003-4	806	813 Met	669	679 Met	850	863 Met
2004-5	814	821 Met	681	699 Met	863	868 Met
2005-6	821	837 Met	699	727 Met	868	880 Met
2006-7	835	849 Met	724	754 Met	878	892 Met
2007-8	849	839 Met	754	743 Not Met	892	897 Met
2008-9	848		758		901	



Increase Participation Across Demographic Spectrum in Advanced Courses

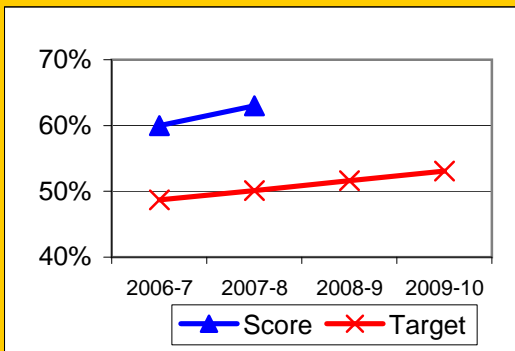
GATE (percent of all GATE students)	Latino		White		All Others	
	Number	Percent	Number	Percent	Number	Percent
2003-4	14	7.7%	143	78.1%	26	14.2%
2004-5	33	10.4%	248	78.5%	35	11.1%
2005-6	41	12.2%	256	76.2%	39	11.6%
2006-7	38	12.6%	225	74.5%	39	12.9%
2007-8	38	12.5%	228	75.0%	38	12.5%
2008-9	43	14.1%	221	72.5%	41	13.4%
2009-10						



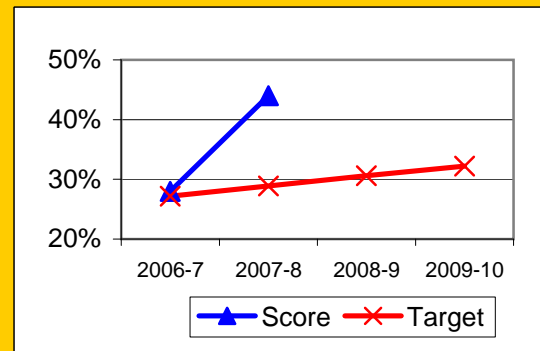
Progress on English Learners Gaining One Proficiency Level Annually and Attaining English Language Proficiency

	Gained One Level On CELDT		Attained English Proficiency		
	Target	Score	Target	Score	
2003-4	51.0%		30.0%		
2004-5	51.5%	75.8%	30.7%	39.6%	
2005-6	52.0%	86.4%	31.4%	76.9%	
2006-7	48.7%	60.0%	27.2%	28.0%	New Norms
2007-8	50.1%	63.0%	28.9%	44.0%	
2008-9	51.6%		30.6%		
2009-10	53.1%		32.2%		

Gained One Level On CELDT

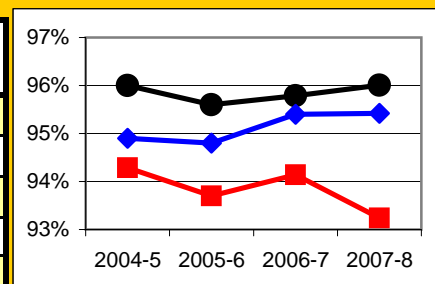


Attained English Proficiency



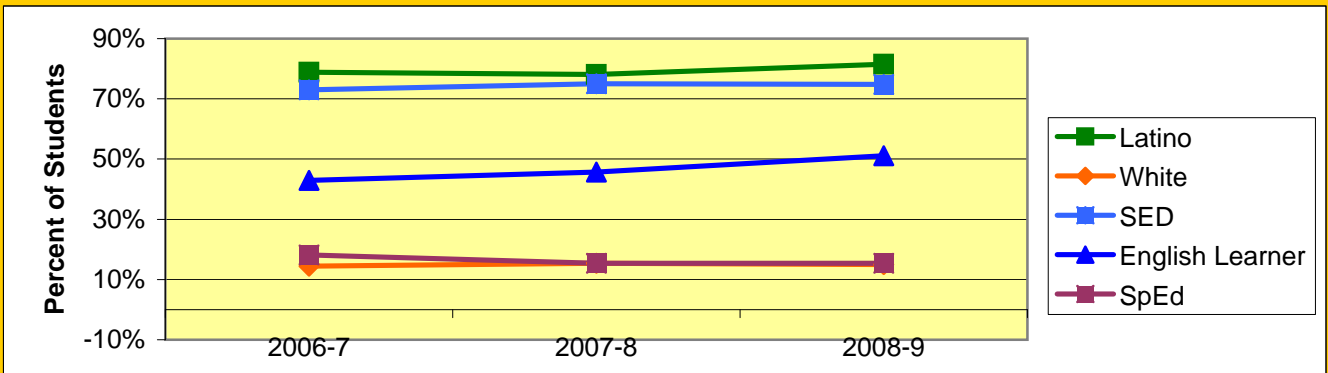
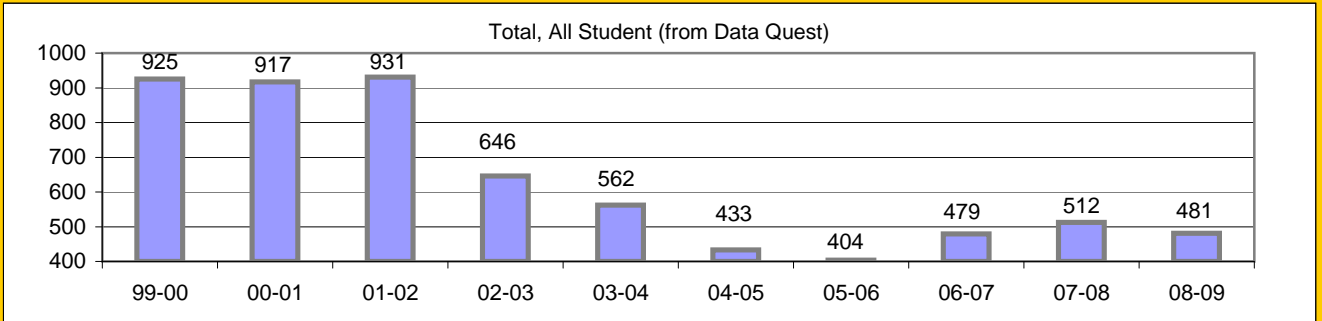
Increase Efforts to Enhance Revenue

Attendance (Percent over year)	Lowest Month	Whole Year	District
2004-5	94.3%	96.0%	94.9%
2005-6	93.7%	95.6%	94.8%
2006-7	94.1%	95.8%	95.4%
2007-8	93.2%	96.0%	95.4%
2008-9			



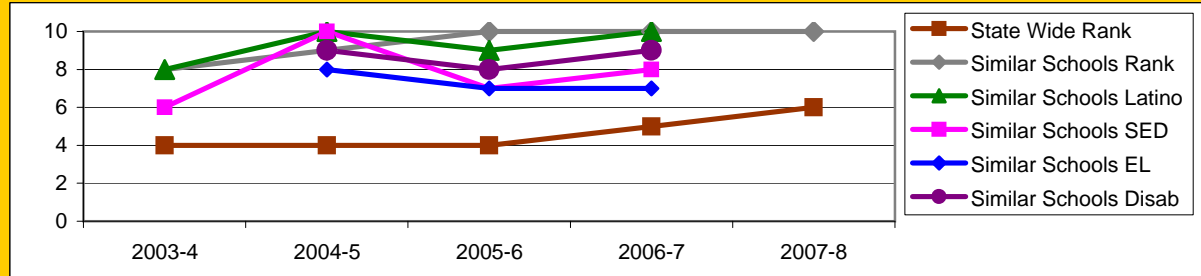
Board Focus Goals: La Cumbre Junior High (2) - May 2009

Demographics (7-8, 0809 Aeries)	Total	Female	Male	Latino	White	SED	English Learner	SpEd
Number	481	235	246	392	72	360	246	74
Percent of Total		48.9%	51.1%	81.5%	15.0%	74.8%	51.1%	15.4%



Achieve a State Similar School Ranking of 8 or Higher (scale = 1-10)

	State Wide Rank	Similar Schools Rank	Similar Schools Latino	Similar Schools White	Similar Schools SED	Similar Schools EL	Similar Schools Disab
2003-4	4	8	8	NA	6	NA	NA
2004-5	4	9	10	NA	10	8	9
2005-6	4	10	9	NA	7	7	8
2006-7	5	10	10	NA	8	7	9
2007-8	6	10	10	10	9	7	NA

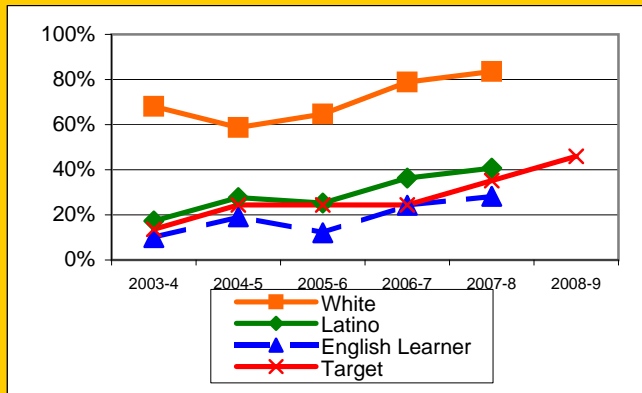


Exceed Federal Adequate Yearly Progress (AYP) Accountability Goals (Blue = Not enough students, **Bold/underline/italic** = Made by adjustment, **Red** = Did not pass

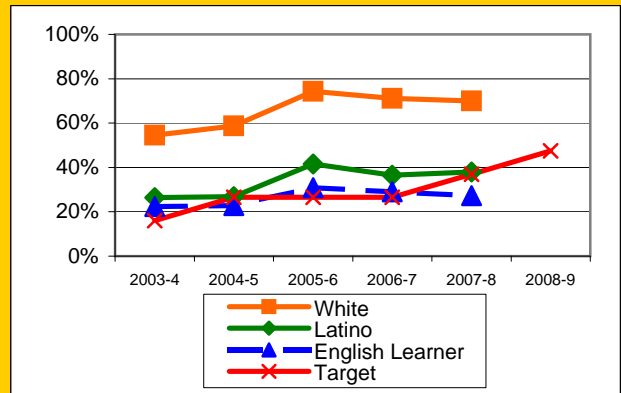
English Language Arts (ELA): Percent Proficient or Higher (Based on 10th grade Exit Exam (CAHSEE), Federal Cut Points)	State Targets	Schoolw ide	Latino	White	Socio- Econ Disadv	English Learner	Stud with Disab	
2003-4	13.6%	24.5%	17.3%	68.1%	15.7%	10.0%	3.1%	PI Y1
2004-5	24.4%	31.3%	27.6%	58.7%	24.5%	19.2%	8.3%	PI Y2
2005-6	24.4%	29.4%	25.2%	64.7%	20.3%	12.1%	8.1%	PI Y3
2006-7	24.4%	45.2%	36.3%	78.8%	33.2%	<u>24.3%</u>	<u>17.5%</u>	PI Y4
2007-8	35.2%	48.4%	40.7%	83.5%	38.3%	28.2%	18.4%	PI Y4
2008-9	46.0%							PI Y5

Math: Percent Proficient or Higher (Based on 10th grade Exit Exam (CAHSEE), Federal Cut Points)	State Targets	Schoolw ide	Latino	White	Socio- Econ Disadv	English Learner	Stud with Disab	
2003-4	16.0%	30.5%	26.4%	54.5%	25.5%	22.4%	11.5%	PI Y1
2004-5	26.5%	30.3%	26.8%	58.7%	25.5%	22.8%	<u>19.0%</u>	PI Y2
2005-6	26.5%	45.3%	41.5%	74.3%	37.5%	30.9%	<u>19.5%</u>	PI Y3
2006-7	26.5%	43.8%	36.5%	71.2%	33.7%	29.0%	<u>22.2%</u>	PI Y4
2007-8	37.0%	44.2%	37.9%	70.0%	36.9%	27.3%	19.5%	PI Y4
2008-9	47.5%							PI Y5

ELA

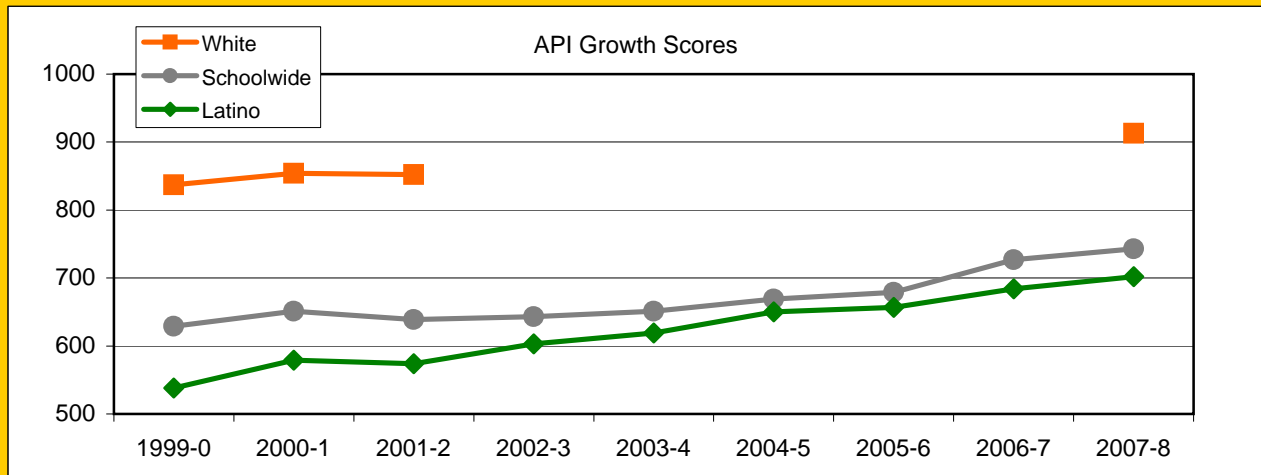


Math



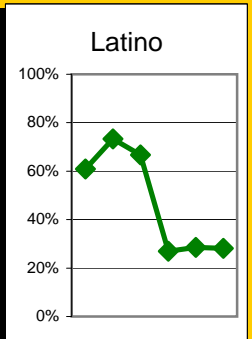
Exceed State Academic Performance Index (API) Growth Goals

	Schoolwide		Latino		White	
	Base	Growth/ Goal Met	Base	Growth/ Goal Met	Base	Growth/ Goal Met
2003-4	611	651 Met	570	619 Met		
2004-5	658	669 Met	627	650 Met		
2005-6	669	679 Met	650	657 Met		
2006-7	680	727 Met	658	684 Met		
2007-8	727	743 Met	684	702 Met		913
2008-9	759		720		916	



Increase Participation Across Demographic Spectrum in Advanced Courses

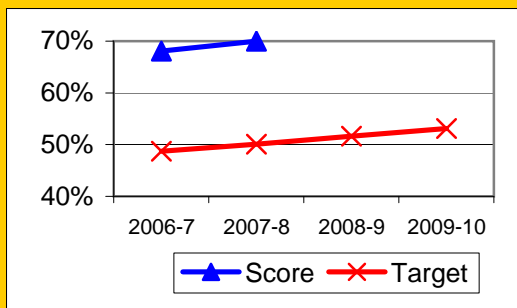
GATE (percent of all GATE students)	Latino		White		All Others	
	Number	Percent	Number	Percent	Number	Percent
2003-4	28	60.9%	15	32.6%	3	6.5%
2004-5	33	73.3%	12	26.7%	0	0.0%
2005-6	32	66.7%	11	22.9%	5	10.4%
2006-7	14	26.9%	32	61.5%	6	11.5%
2007-8	16	28.6%	34	60.7%	6	10.7%
2008-9	9	28.1%	20	62.5%	3	9.4%
2009-10						



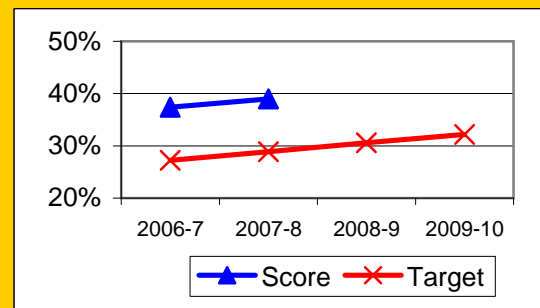
Progress on English Learners Gaining One Proficiency Level Annually and Attaining English Language Proficiency

	Gained One Level On CELDT		Attained English Proficiency		
	Target	Score	Target	Score	
2003-4	51.0%		30.0%		
2004-5	51.5%	86.5%	30.7%	58.8%	
2005-6	52.0%	79.1%	31.4%	52.5%	
2006-7	48.7%	68.1%	27.2%	37.4%	New Norms
2007-8	50.1%	70.0%	28.9%	39.0%	
2008-9	51.6%		30.6%		
2009-10	53.1%		32.2%		

Gained One Level On CELDT

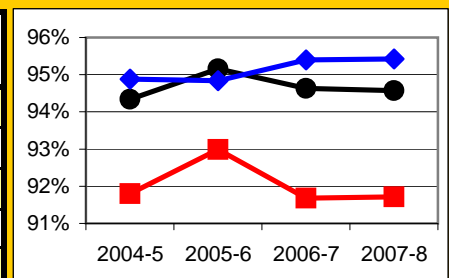


Attained English Proficiency



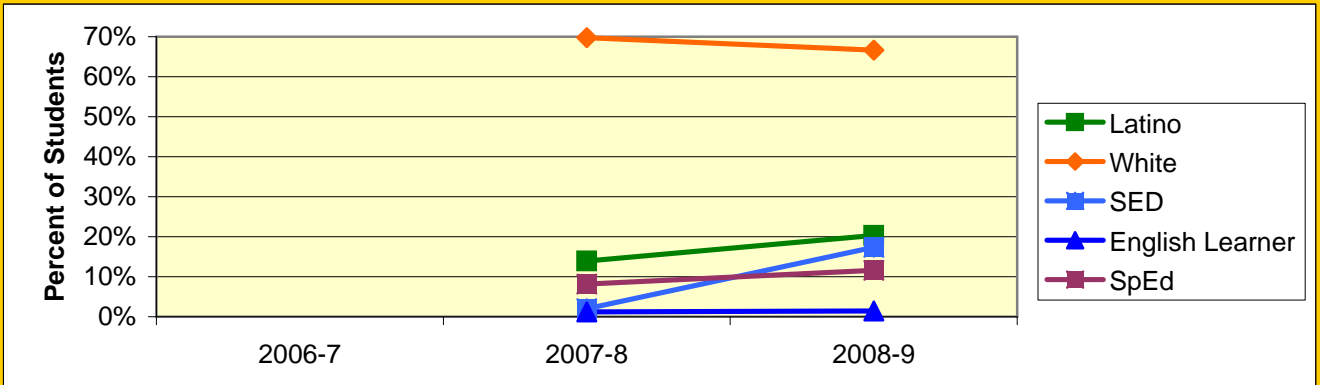
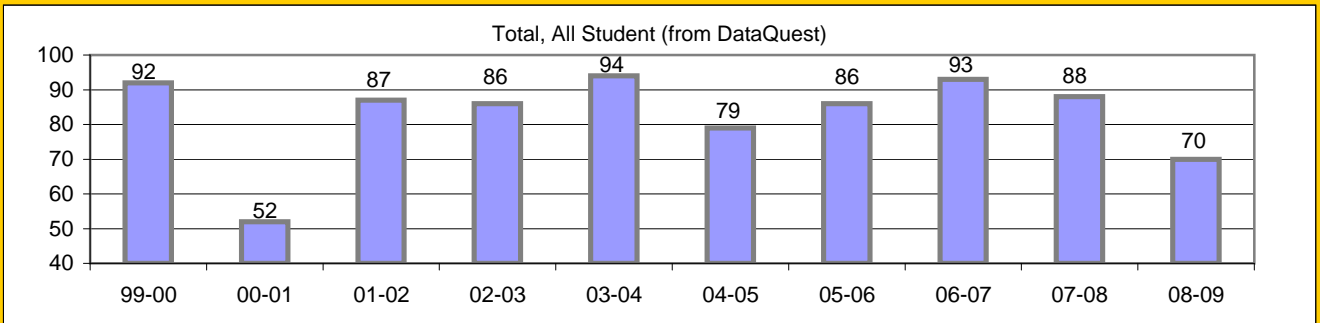
Increase Efforts to Enhance Revenue

Attendance (Percent over year)	Lowest Month	Whole Year	District
2004-5	91.8%	94.3%	94.9%
2005-6	93.0%	95.2%	94.8%
2006-7	91.7%	94.6%	95.4%
2007-8	91.7%	94.6%	95.4%
2008-9			



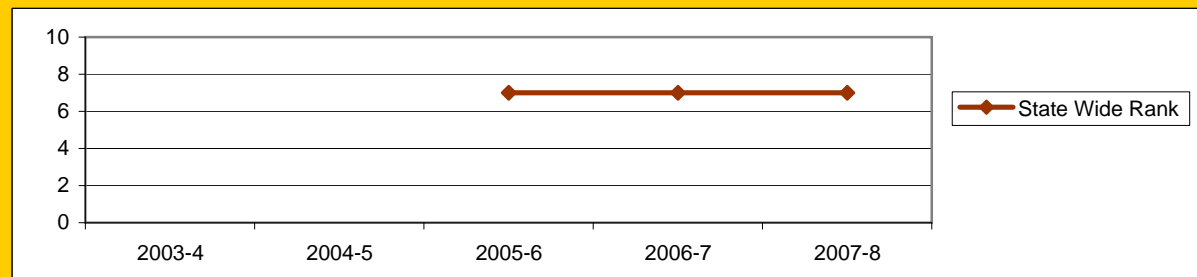
Board Focus Goals: Santa Barbara Charter Middle (8) - May 2009

Demographics (6-8, 0809 Aeries)	Total	Female	Male	Latino	White	SED	English Learner	SpEd
Number	69	31	38	14	46	12	1	8
Percent of Total		44.9%	55.1%	20.3%	66.7%	17.4%	1.4%	11.6%



Achieve a State Similar School Ranking of 8 or Higher (scale = 1-10)

	State Wide Rank	Similar Schools Rank	Similar Schools Latino	Similar Schools White	Similar Schools SED	Similar Schools EL	Similar Schools Disab
2003-4	NA	NA	NA	NA	NA	NA	NA
2004-5	NA	NA	NA	NA	NA	NA	NA
2005-6	7	NA	NA	NA	NA	NA	NA
2006-7	7	NA	NA	NA	NA	NA	NA
2007-8	7	NA	NA	NA	NA	NA	NA

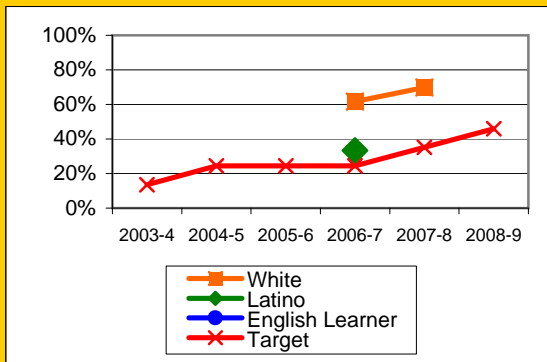


Exceed Federal Adequate Yearly Progress (AYP) Accountability Goals (Blue = Not enough students, Bold/underline/italic = Made by adjustment, Red = Did not pass

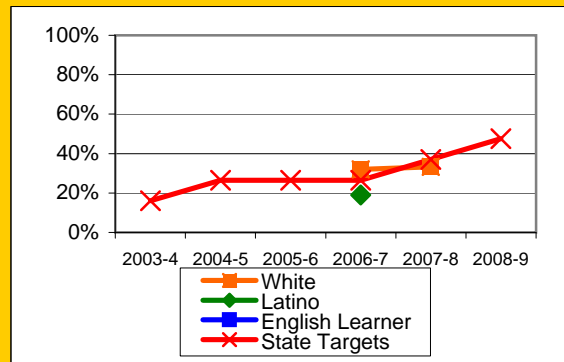
English Language Arts (ELA): Percent Proficient or Higher (Based on 10th grade Exit Exam (CAHSEE), Federal Cut Points)	State Targets	Schoolwide	Latino	White	Socio- Econ Disadv	English Learner	Stud with Disab
2003-4	13.6%						
2004-5	24.4%						
2005-6	24.4%						
2006-7	24.4%	55.3%	33.3%	61.7%	27.3%		
2007-8	35.2%	62.2%		69.8%			
2008-9	46.0%						

Math: Percent Proficient or Higher (Based on 10th grade Exit Exam (CAHSEE), Federal Cut Points)	State Targets	Schoolwide	Latino	White	Socio- Econ Disadv	English Learner	Stud with Disab
2003-4	16.0%						
2004-5	26.5%						
2005-6	26.5%						
2006-7	26.5%	27.8%	19.0%	32.0%	18.2%		
2007-8	37.0%	31.0%		33.3%			
2008-9	47.5%						

ELA

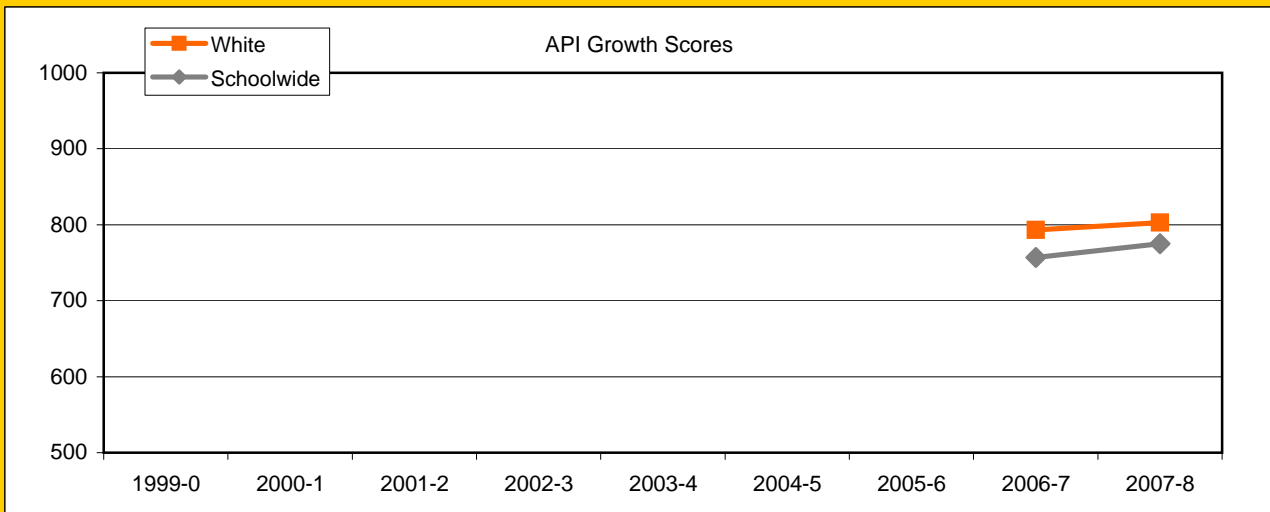


Math



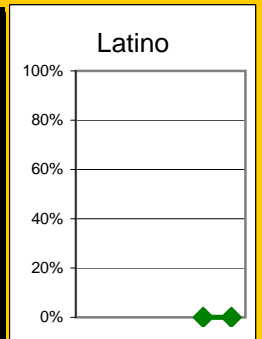
Exceed State Academic Performance Index (API) Growth Goals

	Schoolwide		Latino		White	
	Base	Growth/ Goal Met	Base	Growth/ Goal Met	Base	Growth/ Goal Met
2003-4						
2004-5						
2005-6						
2006-7	766	757 NotMet				793
2007-8	757	775 Met			793	803 Met
2008-9	783				814	



Increase Participation Across Demographic Spectrum in Advanced Courses

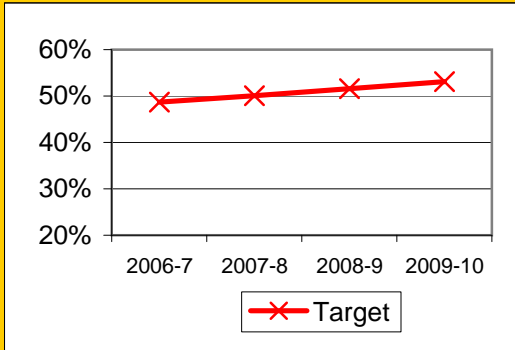
GATE (percent of all GATE students)	Latino		White		All Others	
	Number	Percent	Number	Percent	Number	Percent
2003-4						
2004-5						
2005-6						
2006-7						
2007-8	0	0.0%	1	100.0%	0	0.0%
2008-9	0	0.0%	1	50.0%	1	50.0%
2009-10						



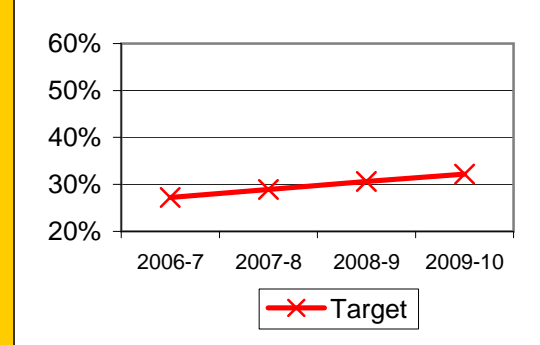
Progress on English Learners Gaining One Proficiency Level Annually and Attaining English Language Proficiency

	Gained One Level On CELDT		Attained English Proficiency		
	Target	Score	Target	Score	
2003-4					
2004-5					
2005-6					
2006-7	48.7%		27.2%		New Norms
2007-8	50.1%		28.9%		
2008-9	51.6%		30.6%		
2009-10	53.1%		32.2%		

Gained One Level On CELDT

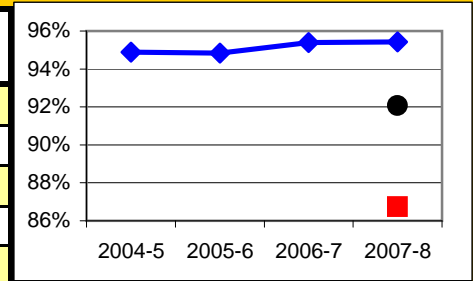


Attained English Proficiency



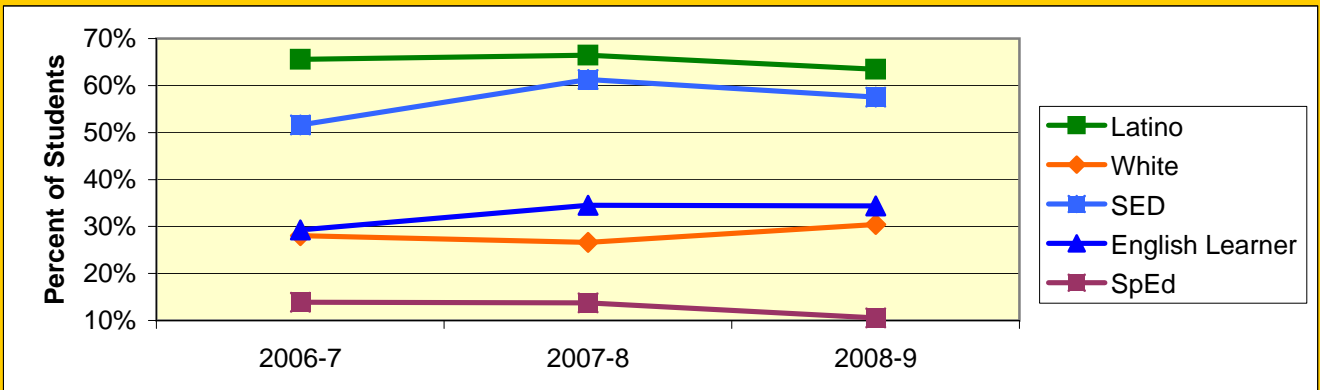
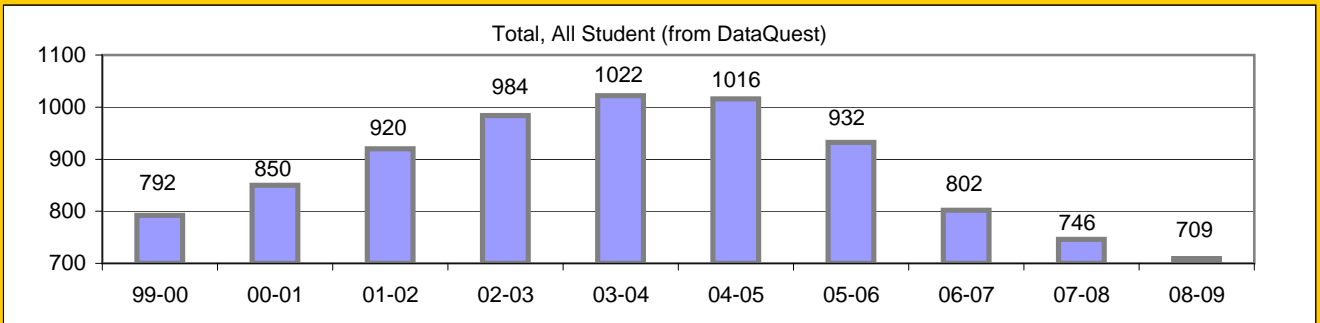
Increase Efforts to Enhance Revenue

Attendance (Percent over year)	Lowest Month	Whole Year	District
2004-5			94.9%
2005-6			94.8%
2006-7			95.4%
2007-8	86.7%	92.1%	95.4%
2008-9			



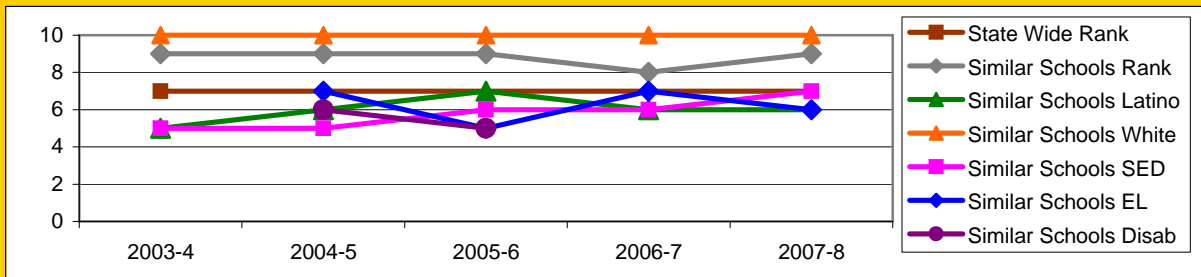
Board Focus Goals: Santa Barbara Junior High (5) - May 2009

Demographics (7-8, 0809)	Total	Female	Male	Latino	White	SED	English Learner	SpEd
Aeries								
Number	704	328	376	447	214	405	242	74
Percent of Total		46.6%	53.4%	63.5%	30.4%	57.5%	34.4%	10.5%



Achieve a State Similar School Ranking of 8 or Higher (scale = 1-10)

	State Wide Rank	Similar Schools Rank	Similar Schools Latino	Similar Schools White	Similar Schools SED	Similar Schools EL	Similar Schools Disab
2003-4	7	9	5	10	5	NA	NA
2004-5	7	9	6	10	5	7	6
2005-6	7	9	7	10	6	5	5
2006-7	7	8	6	10	6	7	NA
2007-8	7	9	6	10	7	6	NA



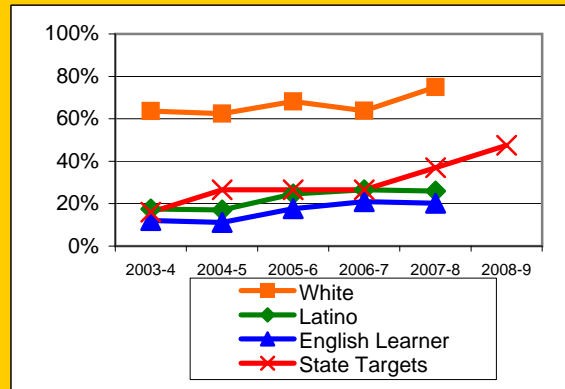
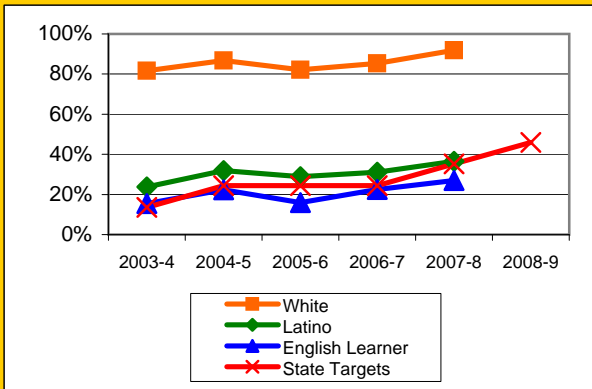
Exceed Federal Adequate Yearly Progress (AYP) Accountability Goals (Blue = Not enough students, **Bold/underline/italic** = Made by adjustment, **Red** = Did not pass)

English Language Arts (ELA): Percent Proficient or Higher (Based on 10th grade Exit Exam (CAHSEE), Federal Cut Points)	State Targets	Schoolwide	Latino	White	Socio- Econ Disadv	English Learner	Stud with Disab	
2003-4	13.6%	45.8%	23.7%	81.6%	21.7%	15.5%	6.0%	Mark 2
2004-5	24.4%	51.3%	31.9%	86.8%	30.1%	<u>22.3%</u>	4.1%	PI Y1
2005-6	24.4%	48.3%	28.8%	82.1%	27.0%	16.0%	5.6%	PI Y2
2006-7	24.4%	48.9%	31.1%	85.4%	28.6%	<u>22.5%</u>	4.2%	PI Y3
2007-8	35.2%	54.5%	36.6%	91.8%	36.7%	27.0%	11.0%	PI Y4
2008-9	46.0%							PI Y5

Math: Percent Proficient or Higher (Based on 10th grade Exit Exam (CAHSEE), Federal Cut Points)	State Targets	Schoolwide	Latino	White	Socio- Econ Disadv	English Learner	Stud with Disab	
2003-4	16.0%	35.3%	17.5%	63.6%	15.8%	12.0%	4.3%	Mark 2
2004-5	26.5%	33.1%	17.1%	62.4%	16.0%	11.1%	3.3%	PI Y1
2005-6	26.5%	40.3%	<u>24.6%</u>	68.1%	<u>24.5%</u>	17.7%	4.7%	PI Y2
2006-7	26.5%	39.2%	26.5%	63.8%	25.6%	21.0%	9.4%	PI Y3
2007-8	37.0%	41.8%	25.9%	74.9%	26.8%	20.2%	7.8%	PI Y4
2008-9	47.5%							PI Y5

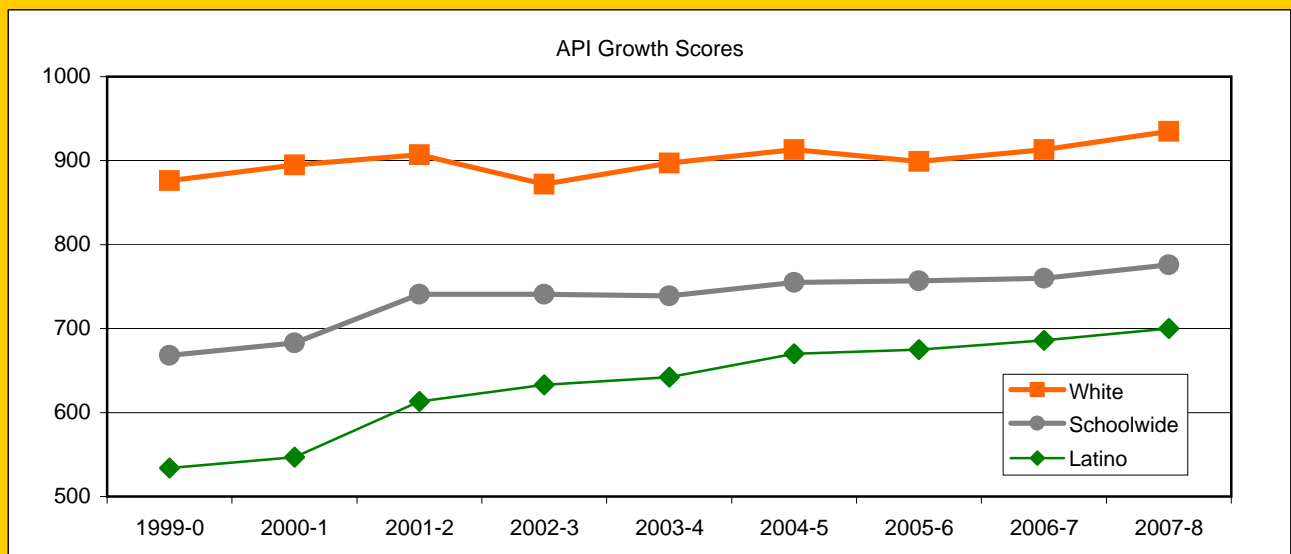
ELA

Math



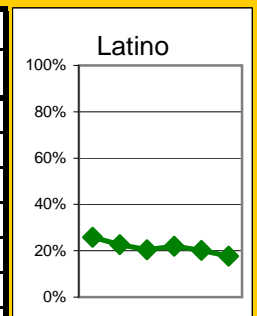
Exceed State Academic Performance Index (API) Growth Goals

	Schoolwide		Latino		White	
	Base	Growth/ Goal Met	Base	Growth/ Goal Met	Base	Growth/ Goal Met
2003-4	746	739 Not Met	637	642 Met	878	897 Met
2004-5	738	755 Met	643	670 Met	894	913 Met
2005-6	755	757 Met	670	675 Met	913	899 Met
2006-7	763	760 Not Met	681	686 Not Met	901	913 Met
2007-8	760	776 Met	686	700 Met	913	935 Met
2008-9	791		717		941	



Increase Participation Across Demographic Spectrum in Advanced Courses

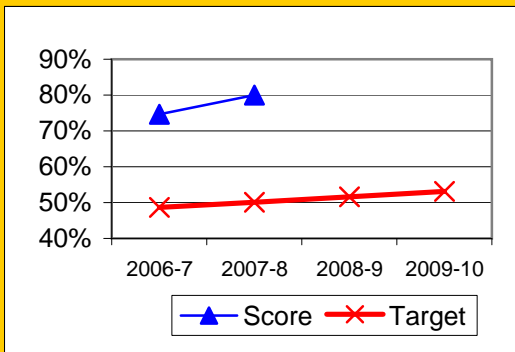
GATE (percent of all GATE students)	Latino		White		All Others	
	Number	Percent	Number	Percent	Number	Percent
2003-4	46	25.8%	120	67.4%	12	6.7%
2004-5	55	22.6%	169	69.5%	19	7.8%
2005-6	43	20.4%	150	71.1%	18	8.5%
2006-7	31	22.0%	91	64.5%	19	13.5%
2007-8	29	20.1%	97	67.4%	18	12.5%
2008-9	22	17.7%	92	74.2%	10	8.1%
2009-10						



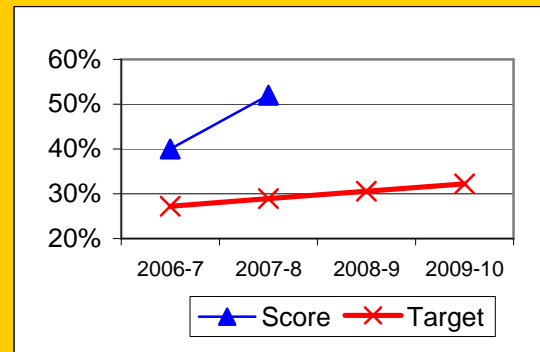
Progress on English Learners Gaining One Proficiency Level Annually and Attaining English Language Proficiency

	Gained One Level On CELDT		Attained English Proficiency		
	Target	Score	Target	Score	
2003-4	51.0%		30.0%		
2004-5	51.5%	84.9%	30.7%	68.3%	
2005-6	52.0%	82.4%	31.4%	63.9%	
2006-7	48.7%	74.6%	27.2%	40.0%	New Norms
2007-8	50.1%	80.0%	28.9%	52.0%	
2008-9	51.6%		30.6%		
2009-10	53.1%		32.2%		

Gained One Level On CELDT

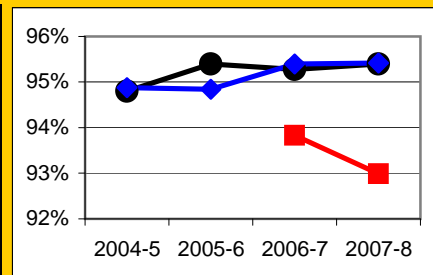


Attained English Proficiency



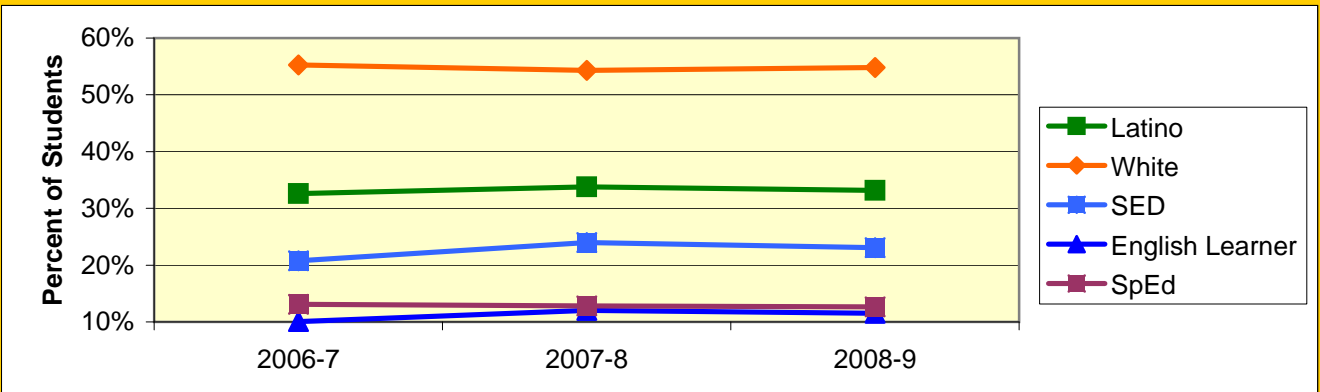
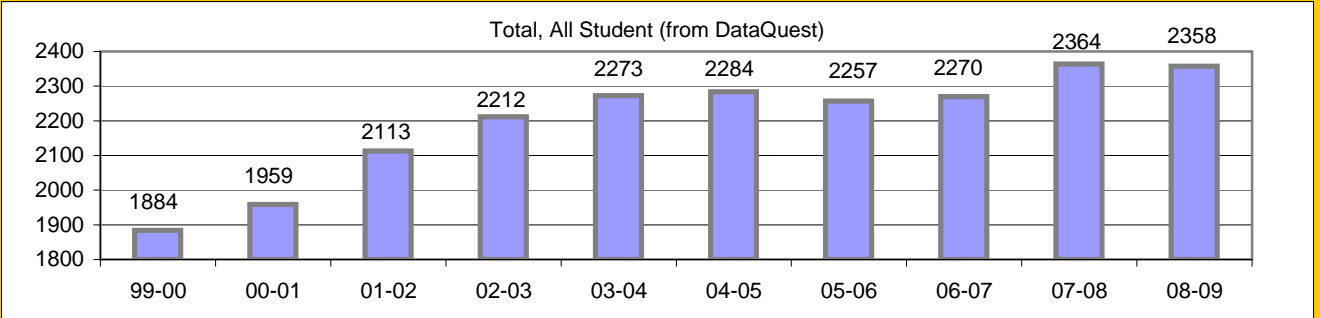
Increase Efforts to Enhance Revenue

Attendance (Percent over year)	Lowest Month	Whole Year	District
2004-5		94.8%	94.9%
2005-6		95.4%	94.8%
2006-7	93.8%	95.3%	95.4%
2007-8	93.0%	95.4%	95.4%



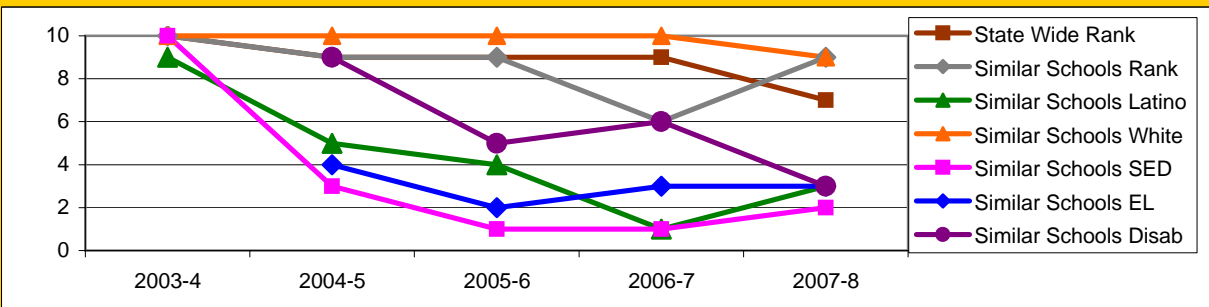
Board Focus Goals: Dos Pueblos High School (7) - May 2009

Demographics (9-12, 0809)	Total	Female	Male	Latino	White	SED	English Learner	SpEd
Aeries								
Number	2338	1124	1214	776	1282	540	270	296
Percent of Total		48.1%	51.9%	33.2%	54.8%	23.1%	11.5%	12.7%



Achieve a State Similar School Ranking of 8 or Higher (scale = 1-10)

	State Wide Rank	Similar Schools Rank	Similar Schools Latino	Similar Schools White	Similar Schools SED	Similar Schools EL	Similar Schools Disab
2003-4	10	10	9	10	10	NA	NA
2004-5	9	9	5	10	3	4	9
2005-6	9	9	4	10	1	2	5
2006-7	9	6	1	10	1	3	6
2007-8	7	9	3	9	2	3	3

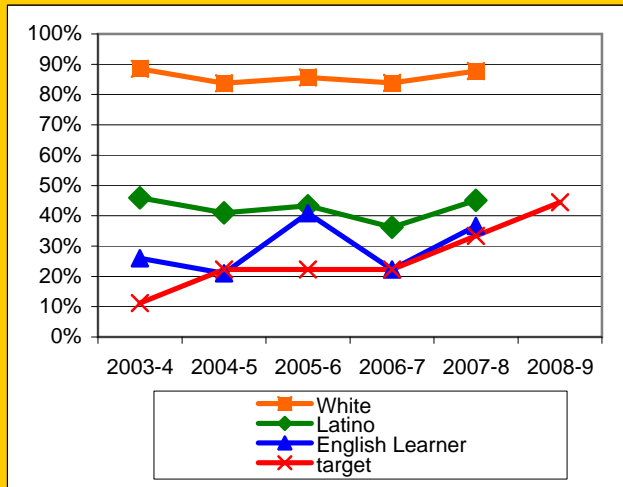


Exceed Federal Adequate Yearly Progress (AYP) Accountability Goals (Blue = Not enough students, **Bold/underline/italic** = Made by adjustment, Red = Did not pass

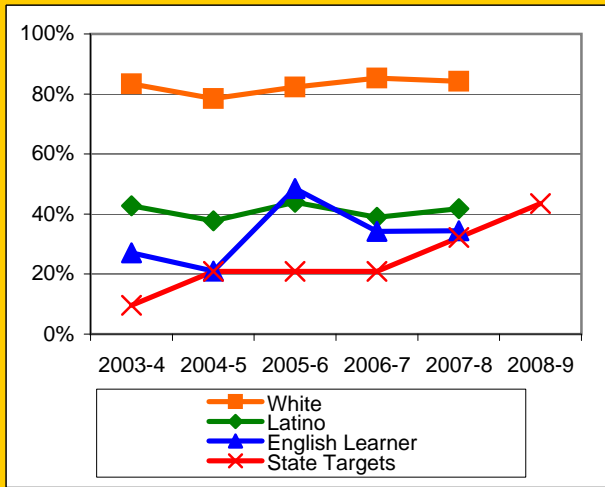
English Language Arts (ELA): Percent Proficient or Higher (Based on 10th grade Exit Exam (CAHSEE), Federal Cut Points)	State Targets	Schoolw ide	Latino	White	Socio- Econ Disadv	English Learner	Stud with Disab
2003-4	11.2%	73.1%	45.9%	88.5%	41.0%	26.0%	31.3%
2004-5	22.3%	70.5%	41.0%	83.7%	29.0%	21.0%	17.3%
2005-6	22.3%	71.4%	43.3%	85.6%	31.3%	40.9%	13.8%
2006-7	22.3%	68.9%	36.2%	83.8%	30.6%	22.3%	19.4%
2007-8	33.4%	71.0%	45.1%	87.8%	40.5%	36.6%	19.4%
2008-9	44.5%						

Math: Percent Proficient or Higher (Based on 10th grade Exit Exam (CAHSEE), Federal Cut Points)	State Targets	Schoolw ide	Latino	White	Socio- Econ Disadv	English Learner	Stud with Disab
2003-4	9.6%	69.6%	42.7%	83.4%	45.0%	27.1%	26.8%
2004-5	20.9%	64.8%	37.7%	78.5%	25.3%	21.0%	17.8%
2005-6	20.9%	70.8%	43.9%	82.3%	42.3%	48.5%	15.8%
2006-7	20.9%	70.5%	38.9%	85.3%	35.3%	34.2%	19.7%
2007-8	32.2%	68.9%	41.8%	84.2%	42.5%	34.4%	21.5%
2008-9	43.5%						

ELA

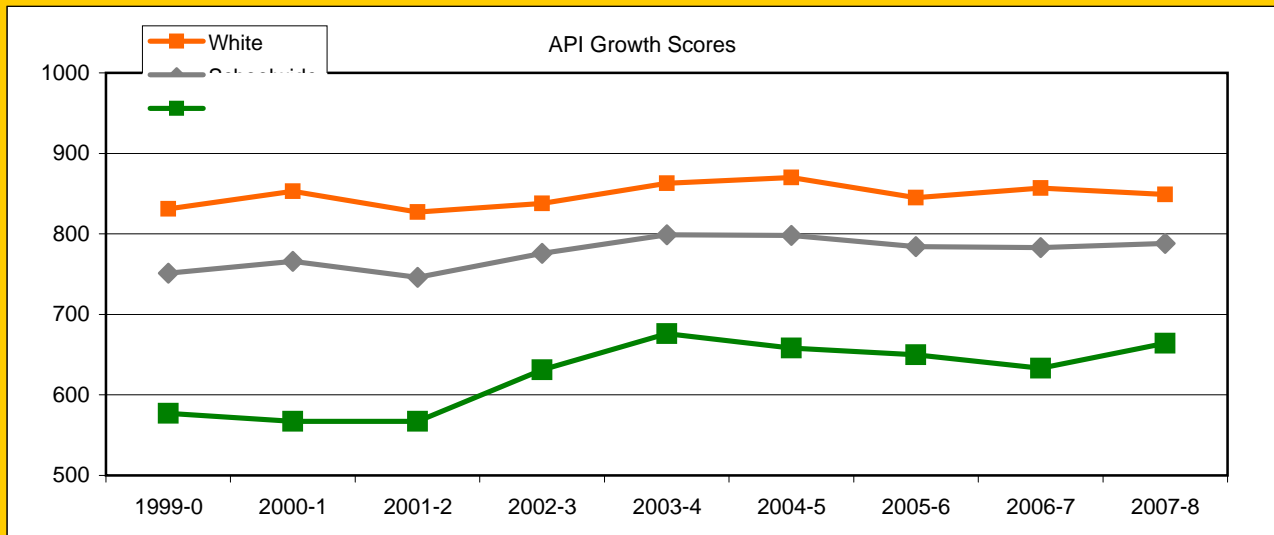


Math



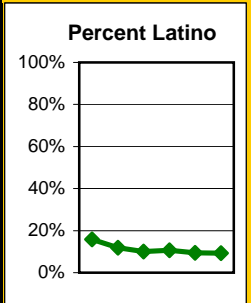
Exceed State Academic Performance Index (API) Growth Goals

	Schoolwide		Latino		White	
	Base	Growth/ Goal Met	Base	Growth/ Goal Met	Base	Growth/ Goal Met
2003-4	746	799 Met	603	676 Met	807	863 Met
2004-5	814	798 Not Met	698	658 Not Met	872	870 Met
2005-6	798	784 Not Met	658	650 Not Met	870	845 Met
2006-7	792	783 Not Met	659	633 Not Met	851	857 Met
2007-8	783	788 Met	633	664 Met	857	849 Met
2008-9	788		664		849	



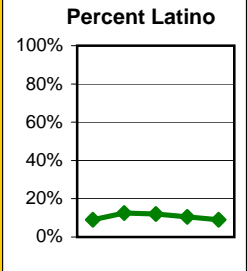
Increase Participation Across Demographic Spectrum in Advanced Courses

GATE (percent of all GATE students)	Latino		White		All Others	
	Number	Percent	Number	Percent	Number	Percent
2003-4	44	15.9%	194	70.0%	39	14.1%
2004-5	53	11.8%	337	75.1%	59	13.1%
2005-6	61	10.1%	457	75.8%	85	14.1%
2006-7	68	10.6%		0.0%		0.0%
2007-8	62	9.4%	499	75.4%	101	15.3%
2008-9	61	9.2%	493	74.6%	107	16.2%
2009-10						

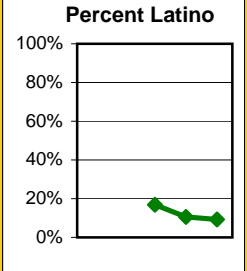


Dos Pueblos High Continued

AP (From SASI and Aeries data; Number of Students)	Latino		White		All Others	
	Number	Percent	Number	Percent	Number	Percent
2003-4	50	9.1%	427	78.1%	70	12.8%
2004-5	70	12.5%	424	75.7%	66	11.8%
2005-6	74	12.0%	449	72.7%	95	15.4%
2006-7	90	10.6%	589	69.2%	172	20.2%
2007-8	50	9.1%	427	78.1%	70	12.8%
2008-9						



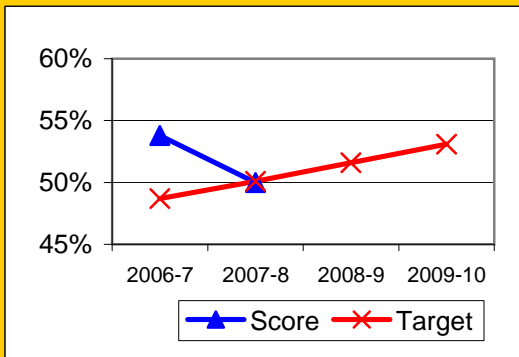
Honors (GATE, SBCC, IB, & AP; Seats, not students)	Latino		White		All Others	
	Number	Percent	Number	Percent	Number	Percent
2003-4						
2004-5						
2005-6	267	16.8%	1108	69.6%	218	13.7%
2006-7	281	10.5%	1930	72.3%	457	17.1%
2007-8	239	9.2%	1888	72.5%	477	18.3%
2008-9						



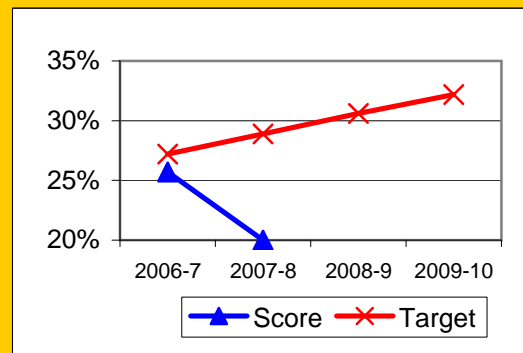
Progress on English Learners Gaining One Proficiency Level Annually and Attaining English Language Proficiency

	Gained One Level On CELDT		Attained English Proficiency		
	Target	Score	Target	Score	
2003-4	51.0%		30.0%		
2004-5	51.5%	71.4%	30.7%	38.2%	
2005-6	52.0%	76.3%	31.4%	37.7%	
2006-7	48.7%	53.8%	27.2%	25.7%	New Norms
2007-8	50.1%	50.0%	28.9%	20.0%	
2008-9	51.6%		30.6%		
2009-10	53.1%		32.2%		

Gained One Level On CELDT



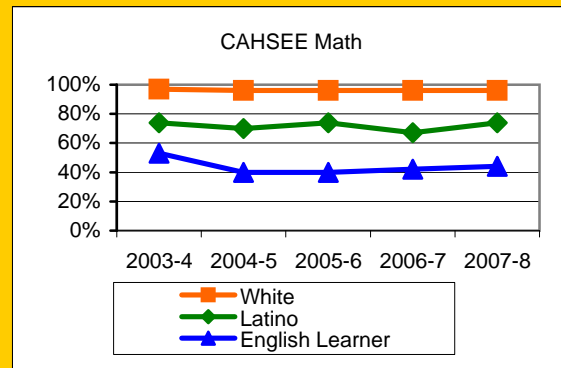
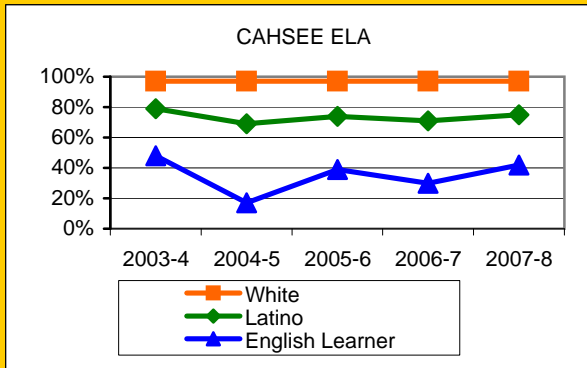
Attained English Proficiency



Preparing Students to Pass the High School Exit Exam (CAHSEE)

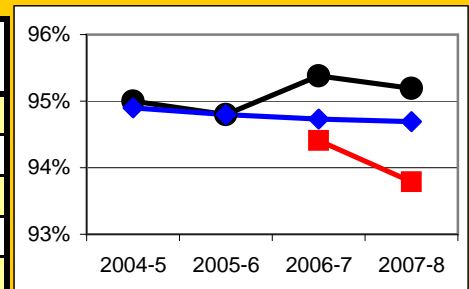
English Language Arts (ELA), March and May in that year, 10th grade only, California cut points (dataquest)	Schoolwide	Latino	White	Socio-Econ Disadv	English Learner	Stud with Disab
2003-4	90.0%	79.0%	97.0%	75.0%	48.0%	58.0%
2004-5	88.0%	69.0%	97.0%	62.0%	17.0%	54.0%
2005-6	89.0%	74.0%	97.0%	68.0%	39.0%	51.0%
2006-7	89.0%	71.0%	97.0%	66.0%	30.0%	50.0%
2007-8	89.0%	75.0%	97.0%	71.0%	42.0%	48.0%
2008-9						

Math, all exams in that year, California cut points (dataquest)	Schoolwide	Latino	White	Socio-Econ Disadv	English Learner	Stud with Disab
2003-4	89.0%	74.0%	97.0%	75.0%	53.0%	51.0%
2004-5	87.0%	70.0%	96.0%	62.0%	40.0%	57.0%
2005-6	88.0%	74.0%	96.0%	62.0%	40.0%	38.0%
2006-7	87.0%	67.0%	96.0%	67.0%	42.0%	39.0%
2007-8	88.0%	74.0%	96.0%	71.0%	44.0%	43.0%
2008-9						



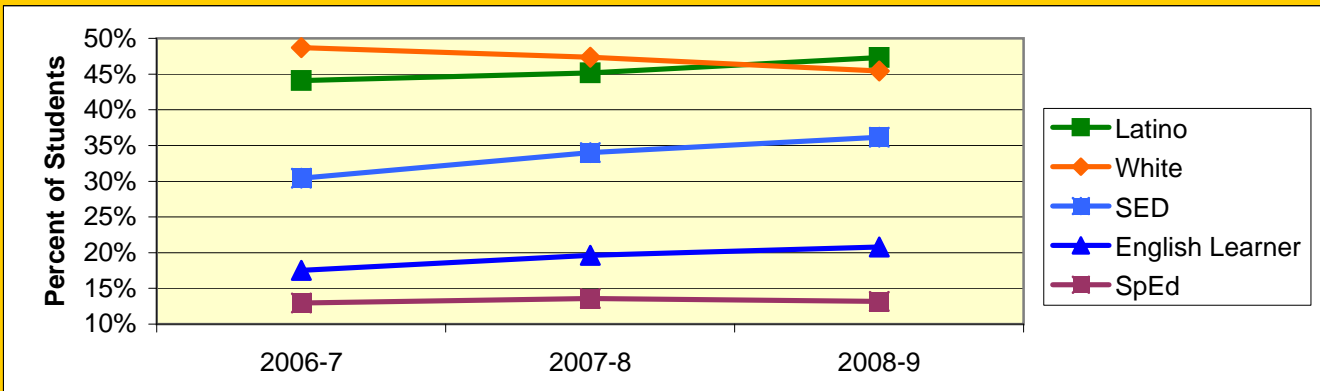
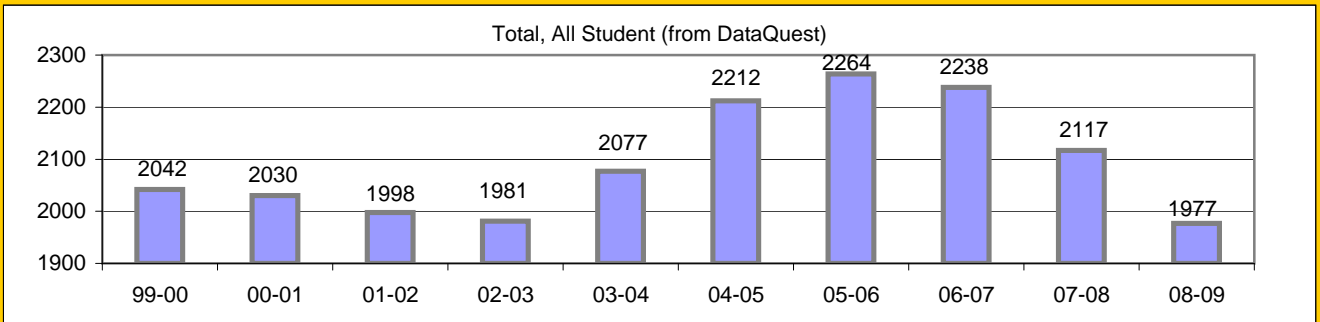
Increase Efforts to Enhance Revenue

Attendance (Percent over year)	Lowest Month	Whole Year	District
2004-5		95.0%	94.9%
2005-6		94.8%	94.8%
2006-7	94.4%	95.4%	94.7%
2007-8	93.8%	95.2%	94.7%
2008-9			



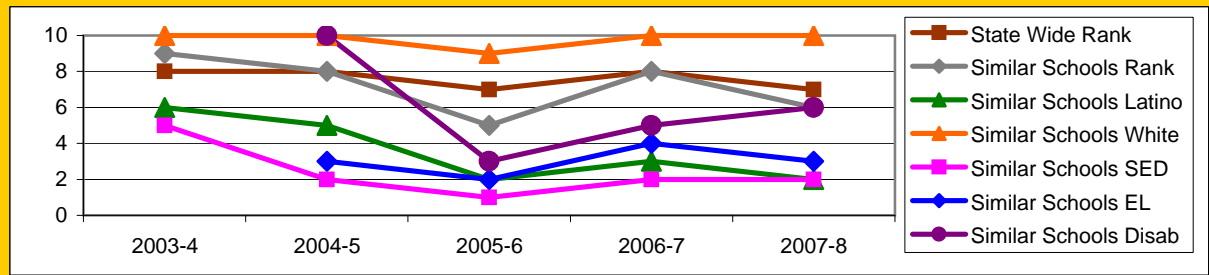
Board Focus Goals: San Marcos High School (3) - May 2009

Demographics (9-12, 0809)	Total	Female	Male	Latino	White	SED	English Learner	SpEd
Number	1920	936	984	908	872	694	399	253
Percent of Total		48.8%	51.3%	47.3%	45.4%	36.1%	20.8%	13.2%



Achieve a State Similar School Ranking of 8 or Higher (scale = 1-10)

	State Wide Rank	Similar Schools Rank	Similar Schools Latino	Similar Schools White	Similar Schools SED	Similar Schools EL	Similar Schools Disab
2003-4	8	9	6	10	5	NA	NA
2004-5	8	8	5	10	2	3	10
2005-6	7	5	2	9	1	2	3
2006-7	8	8	3	10	2	4	5
2007-8	7	6	2	10	2	3	6



Exceed Federal Adequate Yearly Progress (AYP) Accountability Goals (Blue = Not enough students, Bold/underline/italic = Made by adjustment, Red = Did not pass)

English Language Arts (ELA): Percent Proficient or Higher (Based on 10th grade Exit Exam (CAHSEE), Federal Cut Points)	State Targets	Schoolw ide	Latino	White	Socio- Econ Disadv	English Learner	Stud with Disab
2003-4	11.2%	61.3%	33.3%	79.9%	30.5%	21.2%	20.6%
2004-5	22.3%	62.0%	36.8%	81.1%	30.7%	26.1%	37.7%
2005-6	22.3%	60.0%	33.1%	82.8%	28.4%	22.8%	5.3%
2006-7	22.3%	61.5%	37.5%	83.3%	32.2%	23.5%	19.7%
2007-8	33.4%	65.4%	37.3%	86.1%	35.3%	25.0%	35.3%
2008-9	44.5%						

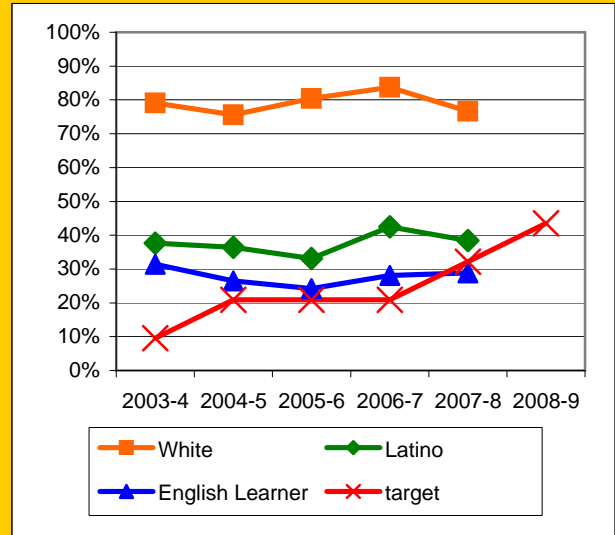
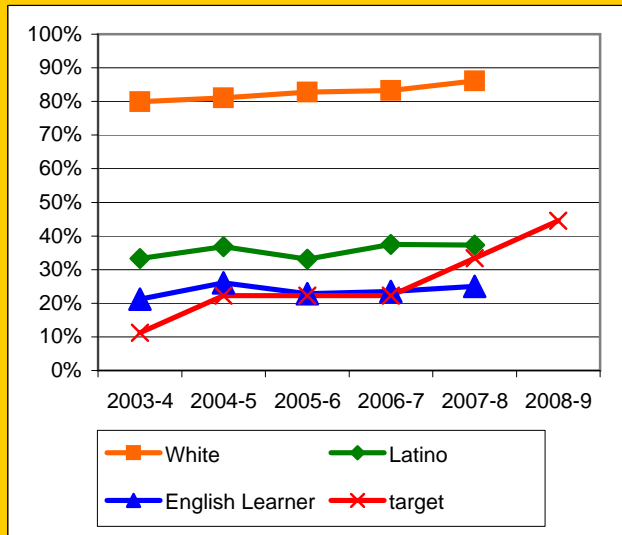
Mark 1

Math: Percent Proficient or Higher (Based on 10th grade Exit Exam (CAHSEE), Federal Cut Points)	State Targets	Schoolw ide	Latino	White	Socio- Econ Disadv	English Learner	Stud with Disab
2003-4	9.6%	62.2%	37.7%	79.1%	37.5%	31.4%	22.2%
2004-5	20.9%	59.5%	36.4%	75.6%	31.7%	26.5%	30.0%
2005-6	20.9%	59.0%	33.1%	80.4%	30.4%	24.2%	7.3%
2006-7	20.9%	64.3%	42.5%	83.7%	38.7%	28.1%	17.9%
2007-8	32.2%	61.2%	38.4%	76.6%	38.7%	28.9%	30.9%
2008-9	43.5%						

Mark 1

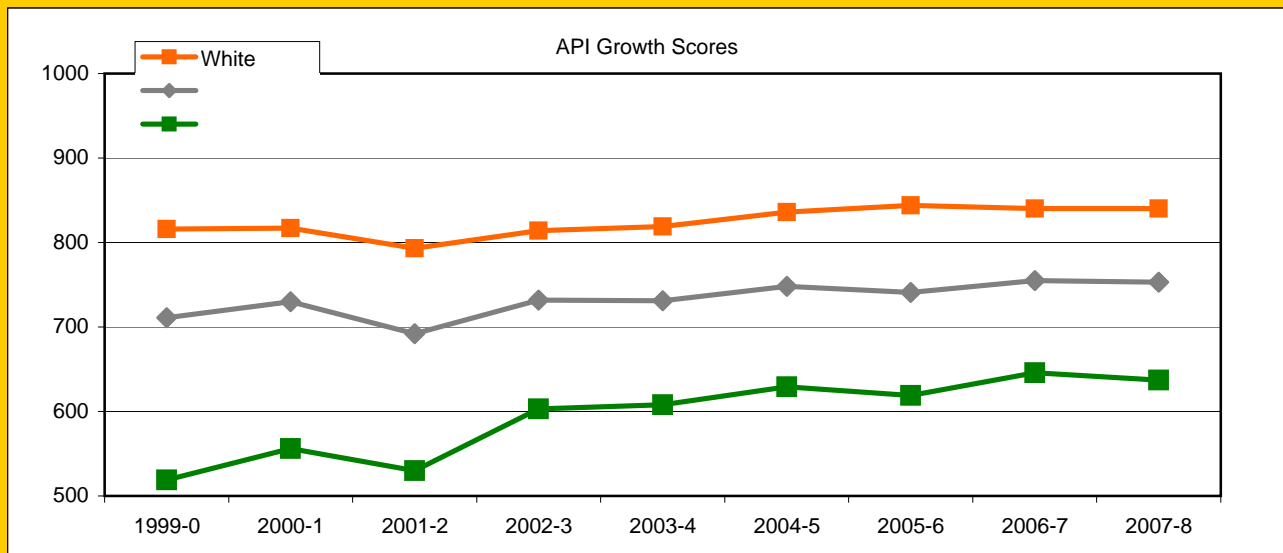
ELA

Math



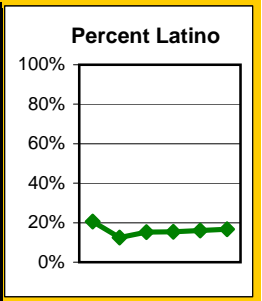
Exceed State Academic Performance Index (API) Growth Goals

	Schoolwide		Latino		White	
	Base	Growth/ Goal Met	Base	Growth/ Goal Met	Base	Growth/ Goal Met
2003-4	717	731 Met	583	608 Met	805	819 Met
2004-5	741	748 Met	624	629 Met	825	836 Met
2005-6	749	741 Not Met	629	619 Not Met	836	844 Met
2006-7	727	755 Met	608	646 Met	826	840 Met
2007-8	755	753 Not Met	646	637 Not Met	840	840 Met
2008-9	753		637		840	



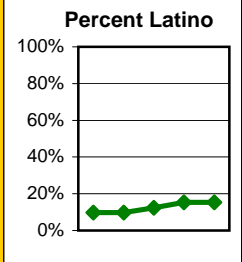
Increase Participation Across Demographic Spectrum in Advanced Courses

GATE (percent of all GATE students)	Latino		White		All Others	
	Number	Percent	Number	Percent	Number	Percent
2003-4	56	20.7%	194	71.6%	21	7.7%
2004-5	53	12.4%	328	77.0%	45	10.6%
2005-6	88	15.3%	434	75.2%	55	9.5%
2006-7	88	15.5%	425	74.7%	56	9.8%
2007-8	85	16.1%	390	73.7%	54	10.2%
2008-9	82	16.6%	361	73.2%	50	10.1%
2009-10						

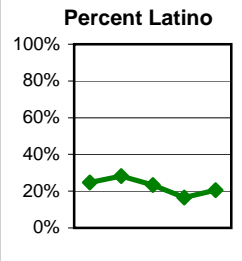


San Marcos High Continued

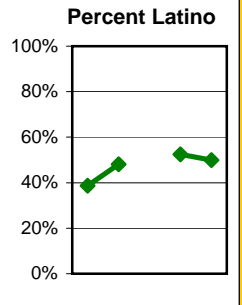
GATE (Seats in GATEclasses)	Latino		White		All Others	
	Number	Percent	Number	Percent	Number	Percent
2003-4	172	9.8%	1438	81.8%	149	8.5%
2004-5	200	9.7%	1643	79.4%	225	10.9%
2005-6	258	12.3%	1637	77.8%	209	9.9%
2006-7	164	15.3%	796	74.2%	113	10.5%
2007-8	161	15.4%	774	74.0%	111	10.6%
2008-9						



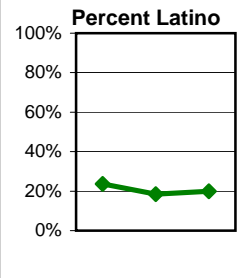
AP (From SASI and Aeries data; Number of Students)	Latino		White		All Others	
	Number	Percent	Number	Percent	Number	Percent
2003-4	165	24.7%	447	66.8%	57	8.5%
2004-5	201	28.2%	447	62.8%	64	9.0%
2005-6	163	23.3%	461	66.0%	75	10.7%
2006-7	118	16.5%	511	71.7%	84	11.8%
2007-8	169	20.6%	553	67.4%	98	12.0%
2008-9						



Academies-Latino (Health Careers; Seats 04-06, students 07-09)	Latino		White		All Others	
	Number	Percent	Number	Percent	Number	Percent
2003-4						
2004-5	77	38.7%	96	48.2%	26	13.1%
2005-6	127	48.1%	112	42.4%	25	9.5%
2006-7						
2007-8	42	52.5%	31	38.8%	7	8.8%
2008-9	44	50.0%	36	40.9%	8	9.1%
2009-10						



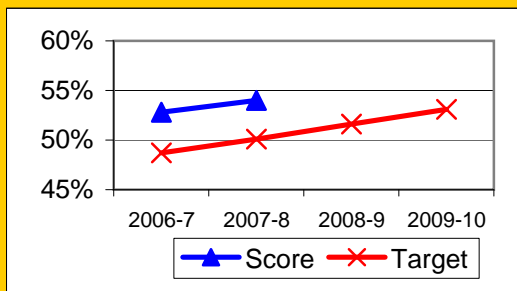
Honors (GATE, SBCC, IB, & AP; Seats, not students)	Latino		White		All Others	
	Number	Percent	Number	Percent	Number	Percent
2003-4						
2004-5						
2005-6	187	23.6%	520	65.6%	86	10.8%
2006-7	435	18.4%	1678	70.8%	256	10.8%
2007-8	516	19.9%	1784	68.8%	293	11.3%
2008-9						



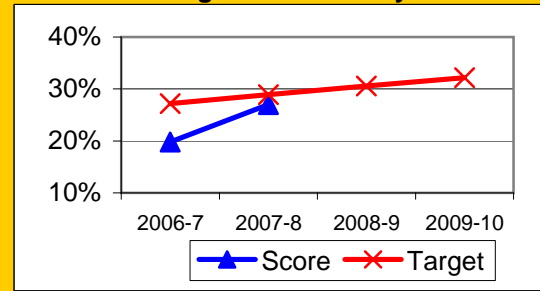
Progress on English Learners Gaining One Proficiency Level Annually and Attaining English Language Proficiency

	Gained One Level On CELDT		Attained English Proficiency		
	Target	Score	Target	Score	
2003-4	51.0%		30.0%		
2004-5	51.5%	72.0%	30.7%	37.9%	
2005-6	52.0%	74.9%	31.4%	47.2%	
2006-7	48.7%	52.8%	27.2%	19.8%	New Norms
2007-8	50.1%	54.0%	28.9%	27.0%	
2008-9	51.6%		30.6%		
2009-10	53.1%		32.2%		

Gained One Level On CELDT



Attained English Proficiency

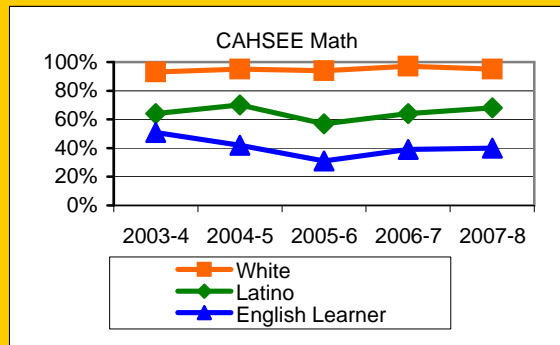
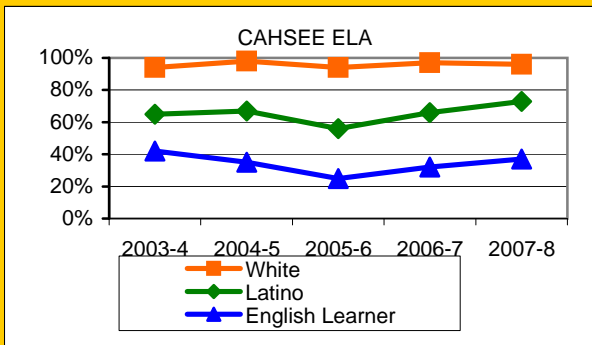


Preparing Students to Pass the High School Exit Exam (CAHSEE)

English Language Arts (ELA), March and May in that year, 10th grade only, California cut points (dataquest)	Schoolwide	Latino	White	Socio-Econ Disadv	English Learner	Stud with Disab
2003-4	82.0%	65.0%	94.0%	63.0%	42.0%	41.0%
2004-5	84.0%	67.0%	98.0%	56.0%	35.0%	52.0%
2005-6	76.0%	56.0%	94.0%	45.0%	25.0%	23.0%
2006-7	82.0%	66.0%	97.0%	60.0%	32.0%	44.0%
2007-8	86.0%	73.0%	96.0%	70.0%	37.0%	56.0%
2008-9						

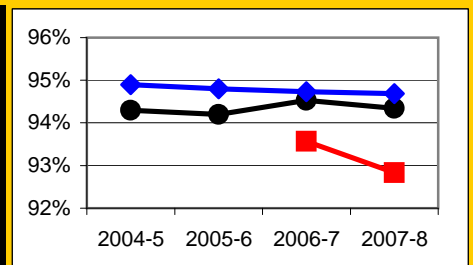
Math, all exams in that year, California cut points (dataquest)	Schoolwide	Latino	White	Socio-Econ Disadv	English Learner	Stud with Disab
2003-4	81.0%	64.0%	93.0%	62.0%	51.0%	32.0%
2004-5	85.0%	70.0%	95.0%	59.0%	42.0%	45.0%
2005-6	77.0%	57.0%	94.0%	50.0%	31.0%	16.0%
2006-7	82.0%	64.0%	97.0%	60.0%	39.0%	39.0%
2007-8	83.0%	68.0%	95.0%	64.0%	40.0%	44.0%
2008-9						

San Marcos High Continued



Increase Efforts to Enhance Revenue

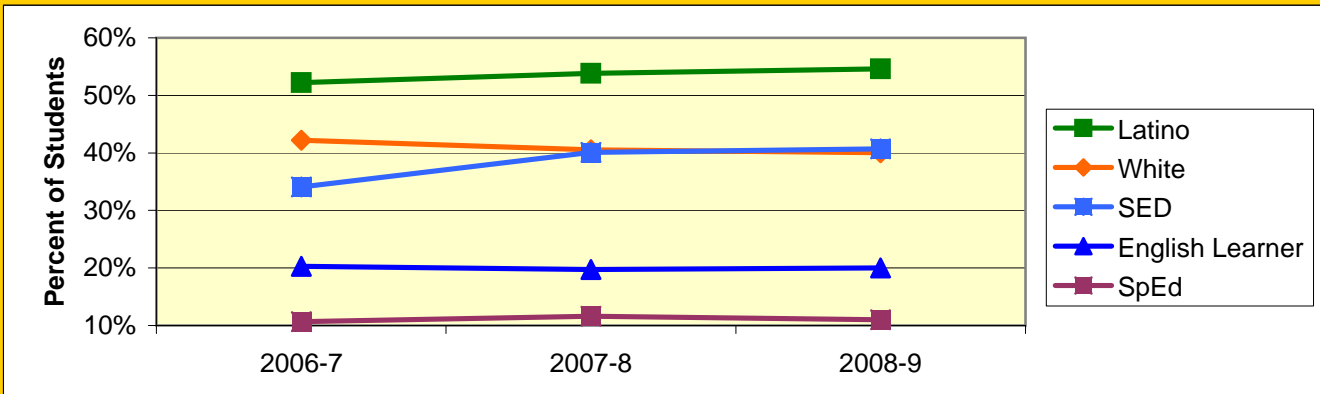
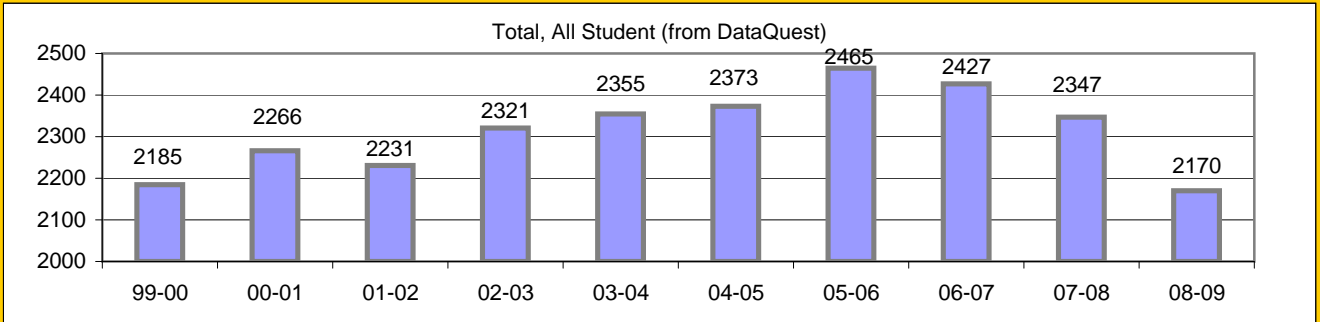
Attendance (Percent over year)	Lowest Month	Whole Year	District
2004-5		94.3%	94.9%
2005-6		94.2%	94.8%
2006-7	93.6%	94.5%	94.7%
2007-8	92.8%	94.3%	94.7%
2008-9			



Prepared by Dr. Davis Hayden, Director of Research, Evaluation, and Technology

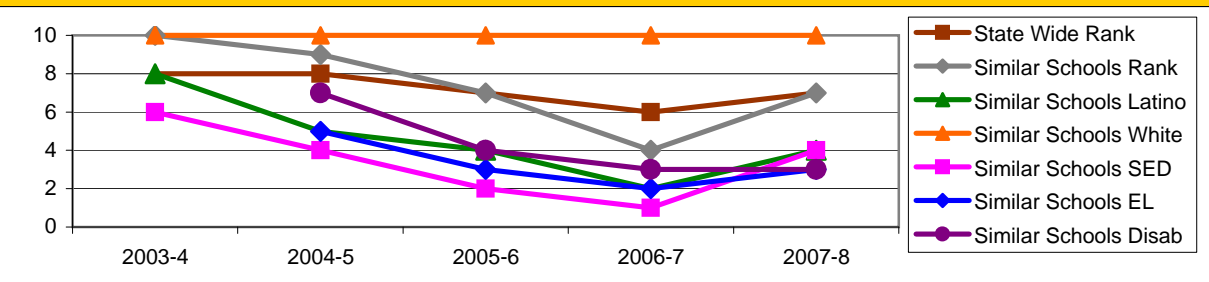
Board Focus Goals: Santa Barbara High School (4) - May 2009

Demographics (9-12, 0809)	Total	Female	Male	Latino	White	SED	English Learner	SpEd
Aeries								
Number	2093	1043	1050	1143	838	852	419	230
Percent of Total		49.8%	50.2%	54.6%	40.0%	40.7%	20.0%	11.0%



Achieve a State Similar School Ranking of 8 or Higher (scale = 1-10)

	State Wide Rank	Similar Schools Rank	Similar Schools Latino	Similar Schools White	Similar Schools SED	Similar Schools EL	Similar Schools Disab
2003-4	8	10	8	10	6	NA	NA
2004-5	8	9	5	10	4	5	7
2005-6	7	7	4	10	2	3	4
2006-7	6	4	2	10	1	2	3
2007-8	7	7	4	10	4	3	3

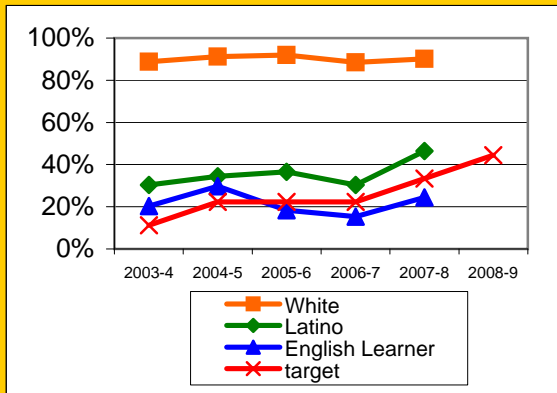


Exceed Federal Adequate Yearly Progress (AYP) Accountability Goals (Blue = Not enough students, **Bold/underline/italic** = Made by adjustment, Red = Did not pass

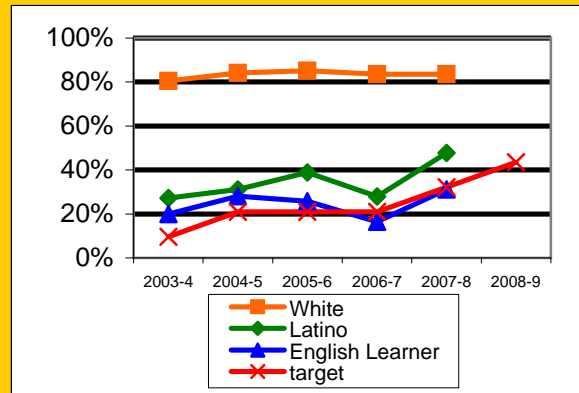
English Language Arts (ELA): Percent Proficient or Higher (Based on 10th grade Exit Exam (CAHSEE), Federal Cut Points)	State Targets	Schoolwide	Latino	White	Socio- Econ Disadv	English Learner	Stud with Disab	
2003-4	11.2%	60.2%	30.3%	88.8%	23.3%	20.3%	16.3%	
2004-5	22.3%	60.2%	34.4%	91.2%	30.4%	29.8%	14.5%	
2005-6	22.3%	63.0%	36.6%	92.0%	28.2%	<u>18.4%</u>	10.2%	
2006-7	22.3%	56.7%	30.3%	88.4%	27.1%	15.4%	10.9%	Mark 1
2007-8	33.4%	67.5%	46.5%	90.2%	43.0%	24.4%	7.0%	Mark 2
2008-9	44.5%							PI Y1

Math: Percent Proficient or Higher (Based on 10th grade Exit Exam (CAHSEE), Federal Cut Points)	State Targets	Schoolwide	Latino	White	Socio- Econ Disadv	English Learner	Stud with Disab	
2003-4	9.6%	54.5%	27.2%	80.5%	23.4%	20.0%	8.0%	
2004-5	20.9%	55.8%	31.1%	84.2%	28.4%	28.1%	10.5%	
2005-6	20.9%	60.9%	38.8%	85.2%	29.6%	25.8%	10.6%	
2006-7	20.9%	53.0%	28.0%	83.6%	26.5%	16.4%	12.3%	
2007-8	32.2%	64.6%	47.7%	83.5%	46.6%	31.1%	12.5%	Mark 1
2008-9	43.5%							PI Y1

ELA

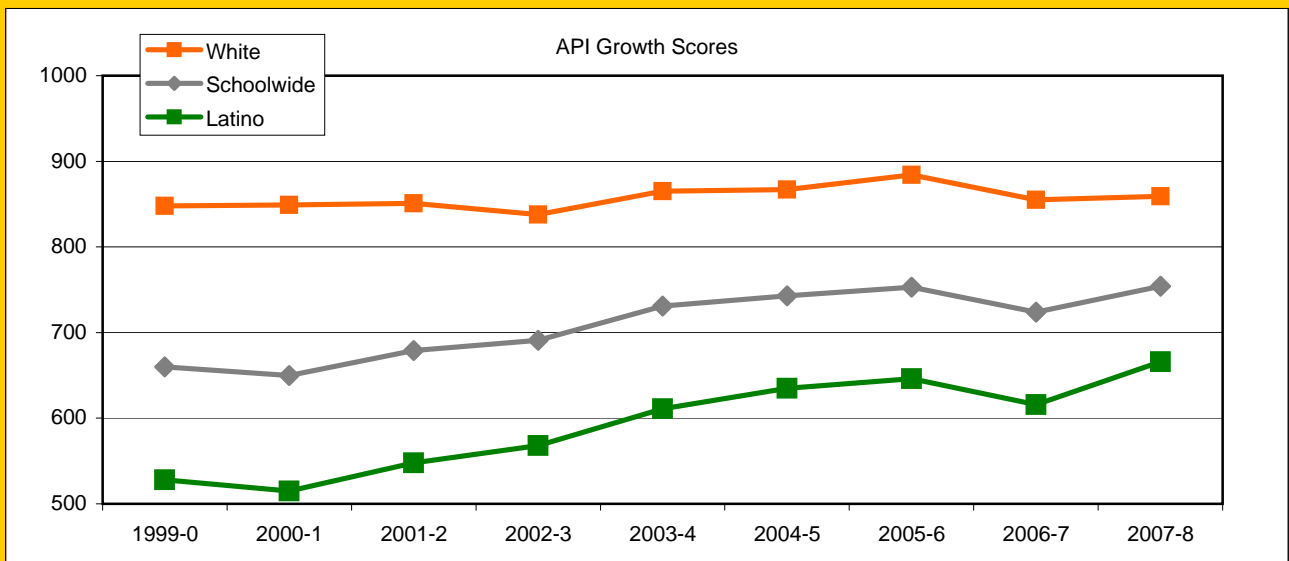


Math



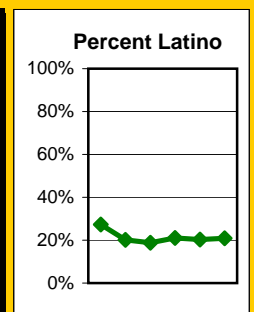
Santa Barbara High Continued
Exceed State Academic Performance Index (API) Growth Goals

	Schoolwide		Latino		White	
	Base	Growth/ Goal Met	Base	Growth/ Goal Met	Base	Growth/ Goal Met
2003-4	666	731 Met	543	611 Met	817	865 Met
2004-5	739	743 Met	621	635 Met	869	867 Met
2005-6	743	753 Met	635	646 Met	868	884 Met
2006-7	737	724 NotMet	630	616 NotMet	866	855 Met
2007-8	724	754 Met	616	666 Met	855	859 Met
2008-9	754		666		859	



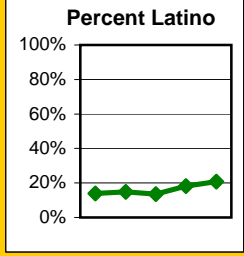
Increase Participation Across Demographic Spectrum in Advanced Courses

GATE (percent of all GATE students)	Latino		White		All Others	
	Number	Percent	Number	Percent	Number	Percent
2003-4	78	27.4%	186	65.3%	21	7.4%
2004-5	98	20.1%	353	72.5%	36	7.4%
2005-6	112	18.8%	442	74.0%	43	7.2%
2006-7	124	21.0%	424	71.9%	42	7.1%
2007-8	114	20.4%	401	71.6%	45	8.0%
2008-9	104	21.0%	350	70.6%	42	8.5%
2009-10						

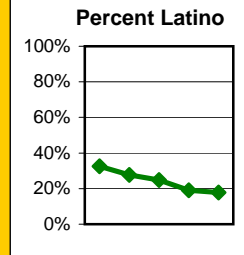


Santa Barbara High Continued

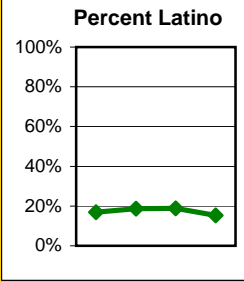
GATE (Seats in GATE classes)	Latino		White		All Others	
	Number	Percent	Number	Percent	Number	Percent
2003-4	257	13.9%	1444	77.8%	154	8.3%
2004-5	340	14.8%	1774	77.4%	179	7.8%
2005-6	318	13.6%	1858	79.7%	156	6.7%
2006-7	184	18.1%	765	75.2%	68	6.7%
2007-8	209	20.8%	723	72.1%	71	7.1%
2008-9						



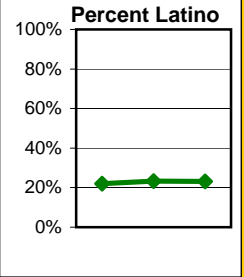
AP (From SASI and Aeries data; Number of Students)	Latino		White		All Others	
	Number	Percent	Number	Percent	Number	Percent
2003-4	163	32.5%	303	60.5%	35	7.0%
2004-5	140	27.7%	324	64.0%	42	8.3%
2005-6	147	24.9%	395	66.8%	49	8.3%
2006-7	185	19.1%	720	74.2%	65	6.7%
2007-8	176	17.8%	742	75.1%	70	7.1%
2008-9						



Academies (MAD, VADA, Green; Seats, not students; Fall last 2 years)	Latino		White		All Others	
	Number	Percent	Number	Percent	Number	Percent
2003-4						
2004-5	226	16.9%	1025	76.8%	83	6.2%
2005-6	344	18.7%	1383	75.1%	114	6.2%
2006-7	151	18.9%	621	77.9%	25	3.1%
2007-8	126	15.3%	665	80.9%	31	3.8%
2008-9						



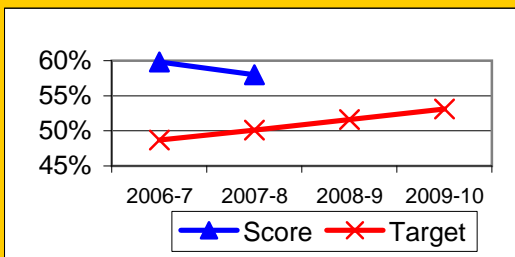
Honors (GATE, SBCC, IB, & AP; Seats, not students)	Latino		White		All Others	
	Number	Percent	Number	Percent	Number	Percent
2003-4						
2004-5						
2005-6	508	22.0%	1624	70.3%	179	7.7%
2006-7	868	23.3%	2623	70.4%	234	6.3%
2007-8	835	23.2%	2530	70.4%	230	6.4%
2008-9						



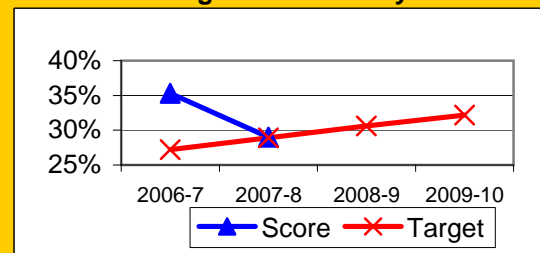
Progress on English Learners Gaining One Proficiency Level Annually and Attaining English Language Proficiency

	Gained One Level On CELDT		Attained English Proficiency		
	Target	Score	Target	Score	
2003-4	51.0%		30.0%		
2004-5	51.5%	82.8%	30.7%	56.8%	
2005-6	52.0%	76.8%	31.4%	43.3%	
2006-7	48.7%	59.8%	27.2%	35.3%	New Norms
2007-8	50.1%	58.0%	28.9%	29.0%	
2008-9	51.6%		30.6%		
2009-10	53.1%		32.2%		

Gained One Level On CELDT



Attained English Proficiency

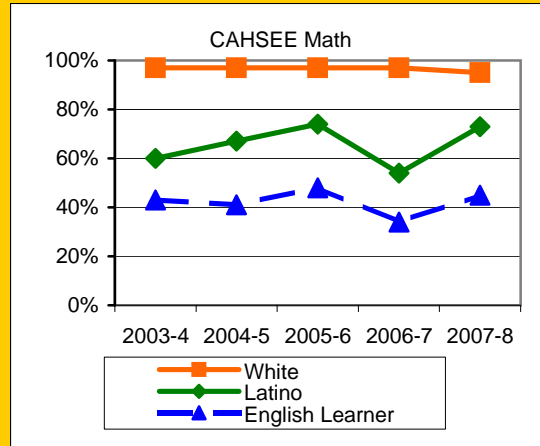
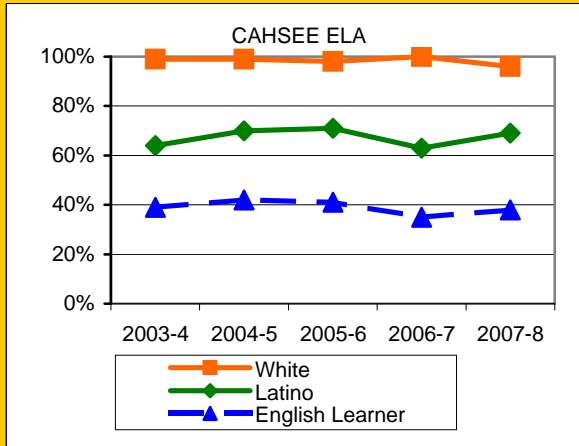


Preparing Students to Pass the High School Exit Exam (CAHSEE)

English Language Arts (ELA), March and May in that year, 10th grade only, California cut points (dataquest)	Schoolwide	Latino	White	Socio-Econ Disadv	English Learner	Stud with Disab
2003-4	82.0%	64.0%	99.0%	57.0%	39.0%	48.0%
2004-5	83.0%	70.0%	99.0%	64.0%	42.0%	40.0%
2005-6	84.0%	71.0%	98.0%	66.0%	41.0%	37.0%
2006-7	79.0%	63.0%	100.0%	63.0%	35.0%	36.0%
2007-8	82.0%	69.0%	96.0%	68.0%	38.0%	38.0%
2008-9						

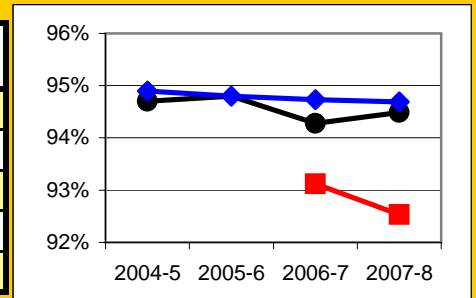
Math, all exams in that year, California cut points (dataquest)	Schoolwide	Latino	White	Socio-Econ Disadv	English Learner	Stud with Disab
2003-4	79.0%	60.0%	97.0%	59.0%	43.0%	25.0%
2004-5	80.0%	67.0%	97.0%	61.0%	41.0%	26.0%
2005-6	85.0%	74.0%	97.0%	68.0%	48.0%	33.0%
2006-7	73.0%	54.0%	97.0%	55.0%	34.0%	25.0%
2007-8	83.0%	73.0%	95.0%	71.0%	45.0%	38.0%
2008-9						

Santa Barbara High Continued



Increase Efforts to Enhance Revenue

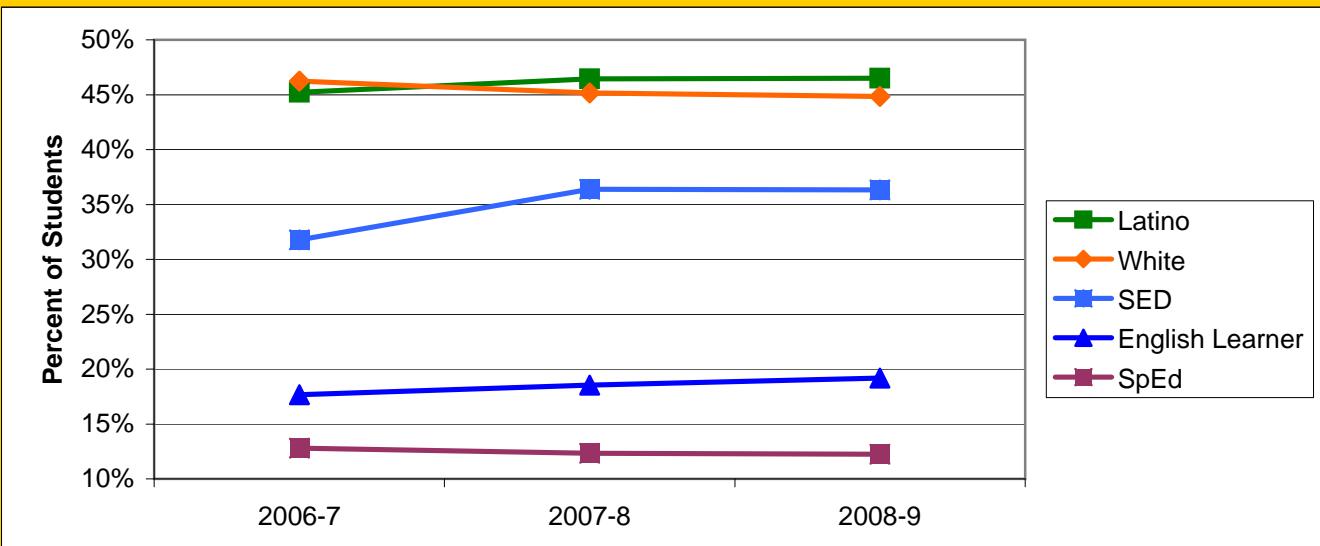
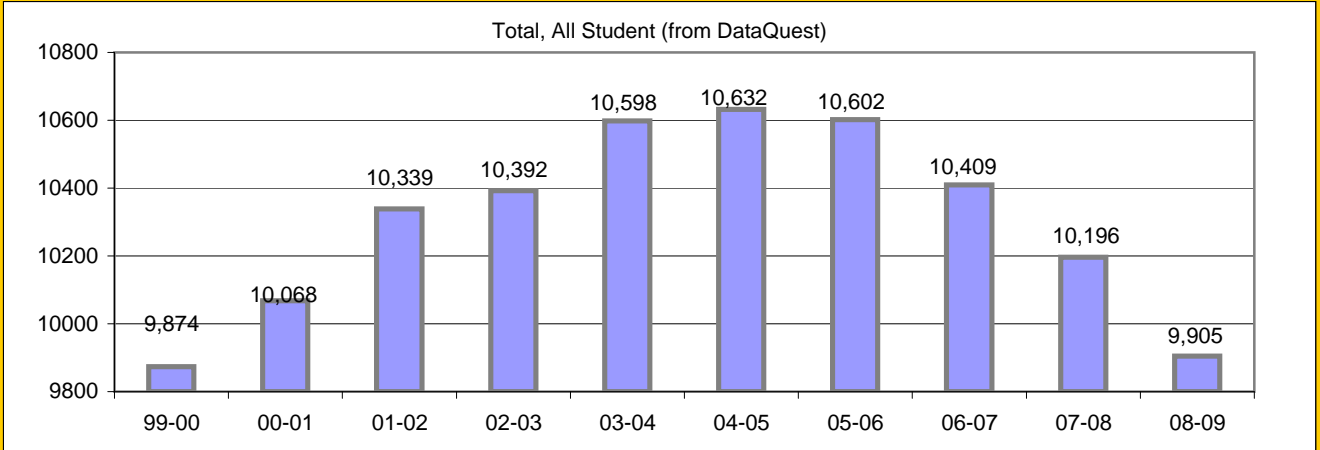
Attendance (Percent over year)	Lowest Month	Whole Year	District
2004-5		94.7%	94.9%
2005-6		94.8%	94.8%
2006-7	93.1%	94.3%	94.7%
2007-8	92.5%	94.5%	94.7%
2008-9			



Prepared by Dr. Davis Hayden, Director of Research, Evaluation, and Technology

Board Focus Goals: Secondary District - May 2009

Demographics (7-12, 0809 Aeries)	Total	Female	Male	Latino	White	SED	English Learner	SpEd
Number	9451	4640	4811	4396	4238	3434	1812	1157
Percent of Total		49.1%	50.9%	46.5%	44.8%	36.3%	19.2%	12.2%



Secondary District Continued

Exceed Federal Adequate Yearly Progress (AYP) Accountability Goals (Blue = Not enough students, Bold/underline/italic = Made by adjustment, Red = Did not pass

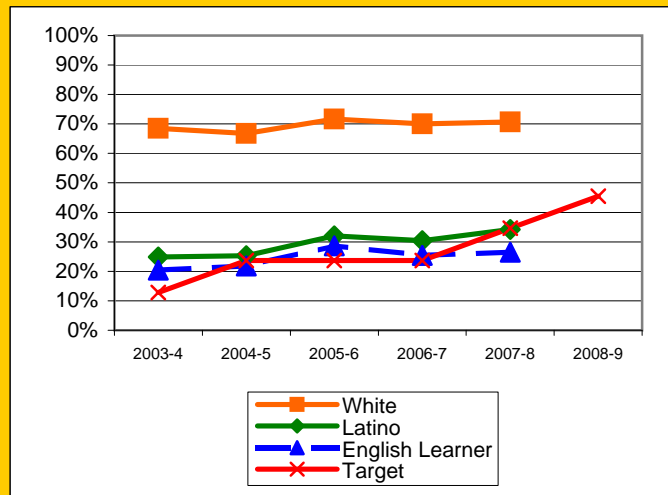
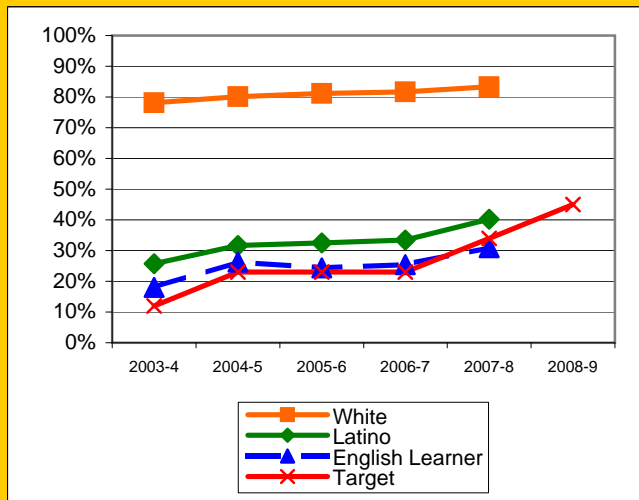
enough students, Bold/underline/italic = Made by adjustment, Red = Did not pass

English Language Arts (ELA): Percent Proficient or Higher (Based on 10th grade Exit Exam (CAHSEE), Federal Cut Points)	State Targets	Schoolwide	Latino	White	Socio- Econ Disadv	English Learner	Stud with Disab	
2003-4	12.0%	52.8%	25.7%	78.1%	22.1%	18.0%	12.8%	
2004-5	23.0%	57.0%	31.7%	80.1%	28.0%	26.3%	17.2%	
2005-6	23.0%	57.7%	32.5%	81.1%	27.6%	24.4%	12.8%	
2006-7	23.0%	56.5%	33.4%	81.7%	30.7%	25.4%	14.5%	Mark 1
2007-8	34.0%	61.5%	40.2%	83.3%	37.4%	30.9%	17.8%	Mark 1
2008-9	45.0%							Not PI

Math: Percent Proficient or Higher (Based on 10th grade Exit Exam (CAHSEE), Federal Cut Points)	State Targets	Schoolwide	Latino	White	Socio- Econ Disadv	English Learner	Stud with Disab	
2003-4	12.8%	47.8%	24.9%	68.5%	23.1%	20.4%	11.8%	
2004-5	23.7%	47.2%	25.3%	66.8%	22.5%	21.8%	15.5%	
2005-6	23.7%	53.1%	32.0%	71.7%	30.0%	28.7%	13.8%	
2006-7	23.7%	49.6%	30.4%	70.0%	29.2%	25.4%	13.8%	
2007-8	34.6%	52.9%	34.2%	70.7%	33.6%	26.5%	16.0%	Mark 1
2008-9	45.5%							Not PI

ELA

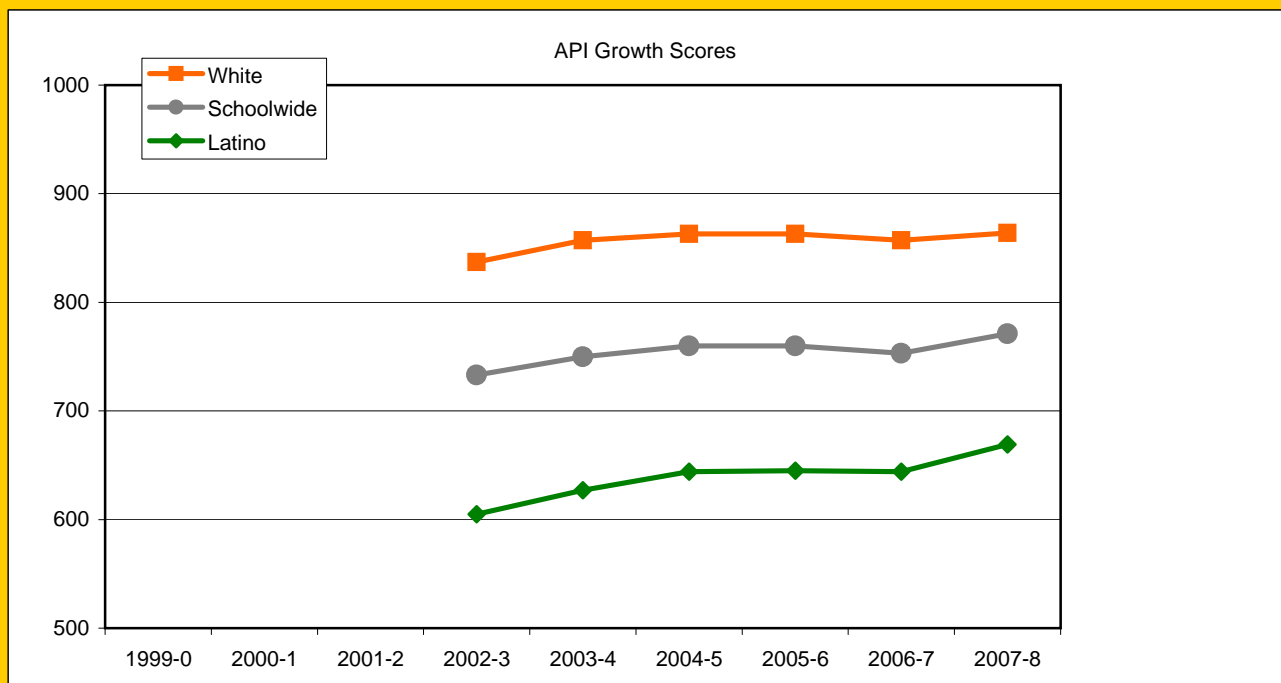
Math



Secondary District Continued

Exceed State Academic Performance Index (API) Growth Goals

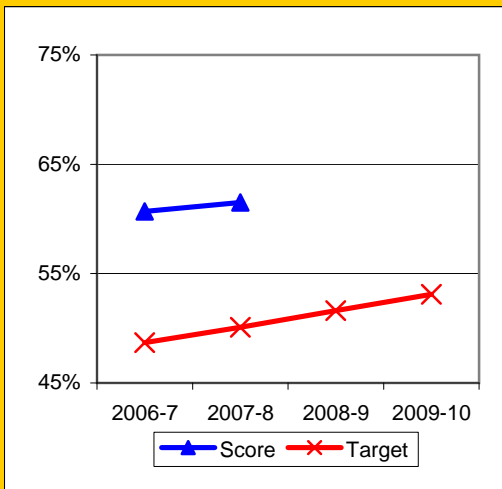
	Schoolwide		Latino		White	
	Base	Growth/ Goal Met	Base	Growth/ Goal Met	Base	Growth/ Goal Met
2003-4	716	750	585	627	824	857
2004-5	756	760	636	644	859	863
2005-6	760	760	644	645	863	863
2006-7	757	753	642	644	857	857
2007-8	753	771	644	669	857	864
2008-9	775		674		864	



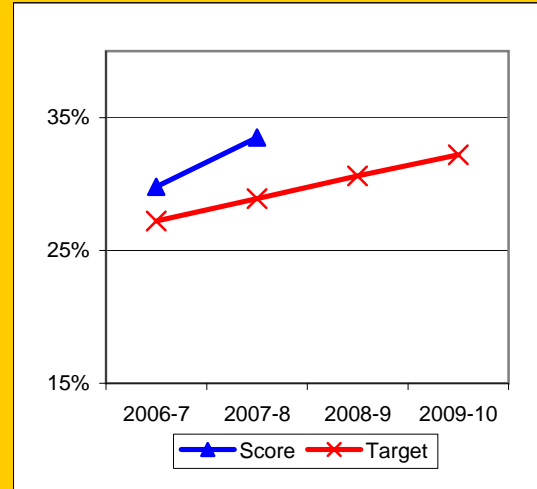
Progress on English Learners Gaining One Proficiency Level Annually and Attaining English Language Proficiency

	Gained One Level On CELDT		Attained English Proficiency		
	Target	Score	Target	Score	
2003-4	51.0%	78.6%	30.0%	56.9%	
2004-5	51.5%	80.2%	30.7%	53.0%	
2005-6	52.0%	78.4%	31.4%	53.0%	
2006-7	48.7%	60.7%	27.2%	29.8%	New Norms
2007-8	50.1%	61.5%	28.9%	33.5%	
2008-9	51.6%		30.6%		
2009-10	53.1%		32.2%		

Gained One Level On CELDT



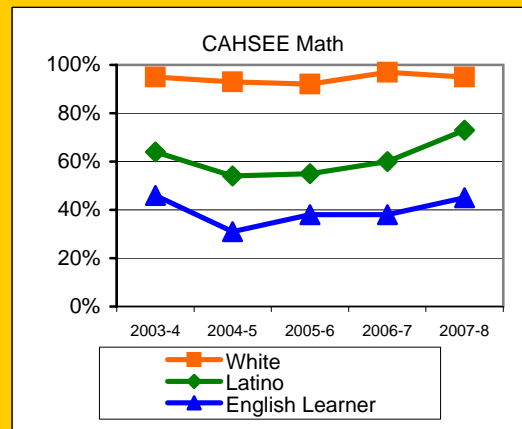
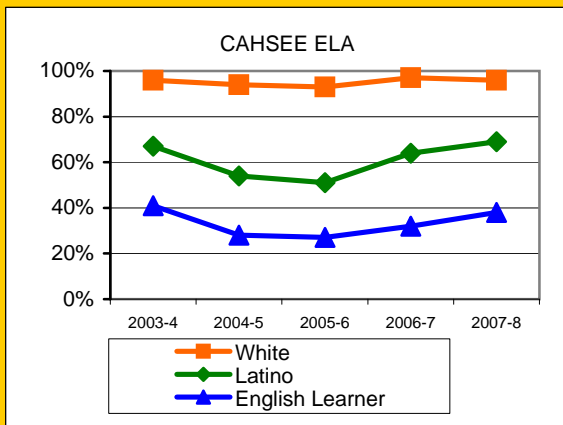
Attained English Proficiency



Preparing Students to Pass the High School Exit Exam (CAHSEE)

English Language Arts (ELA), March and May in that year, 10th grade only, California cut points (dataquest)	Schoolwide	Latino	White	Socio-Econ Disadv	English Learner	Student with Disab
2003-4	83.0%	67.0%	96.0%	62.0%	41.0%	48.0%
2004-5	74.0%	54.0%	94.0%	47.0%	28.0%	37.0%
2005-6	69.0%	51.0%	93.0%	44.0%	27.0%	33.0%
2006-7	82.0%	64.0%	97.0%	61.0%	32.0%	44.0%
2007-8	84.0%	69.0%	96.0%	68.0%	38.0%	38.0%
2008-9						

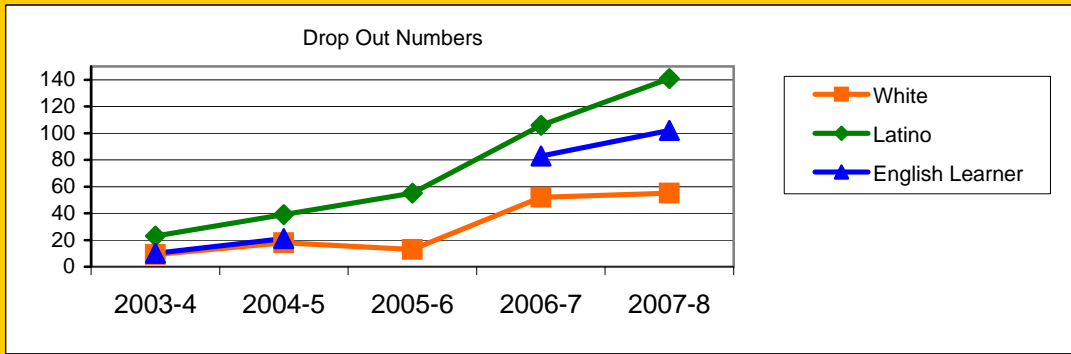
Math, all exams in that year, California cut points (dataquest)	Schoolwide	Latino	White	Socio-Econ Disadv	English Learner	Student with Disab
2003-4	82.0%	64.0%	95.0%	63.0%	46.0%	37.0%
2004-5	73.0%	54.0%	93.0%	47.0%	31.0%	32.0%
2005-6	71.0%	55.0%	92.0%	50.0%	38.0%	30.0%
2006-7	79.0%	60.0%	97.0%	59.0%	38.0%	35.0%
2007-8	83.0%	73.0%	95.0%	71.0%	45.0%	38.0%
2008-9						



Secondary District Continued

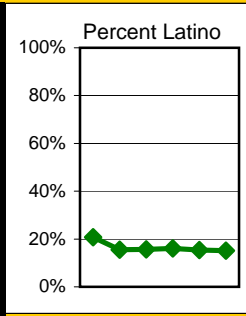
Drop out rates for High Schools (grades 9-12 from Dataquest; some data is not available)	District	Latino	White	Socio-Econ Disadv	English Learner	Stud with Disab
2003-4	33	23	9	3	10	5
2004-5	58	39	18	17	21	11
2005-6	75	55	13			
2006-7	170	106	52	37	83	0
2007-8	213	141	55	119	102	49

(New coding)

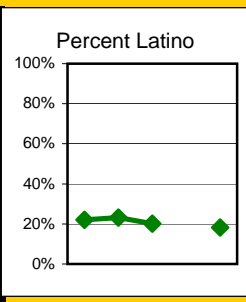


Increase Participation Across Demographic Spectrum in Advanced Courses (Percent of students within total population)

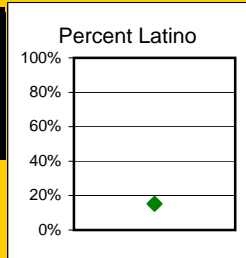
GATE (percent of all GATE students)	Latino		White		All Others	
	Number	Percent	Number	Percent	Number	Percent
2003-4	283	20.8%	935	68.7%	143	10.5%
2004-5	338	15.5%	1614	73.8%	234	10.7%
2005-6	406	15.7%	1889	73.1%	290	11.2%
2006-7	416	16.0%	1872	72.2%	304	11.7%
2007-8	381	15.4%	1803	72.6%	298	12.0%
2008-9	356	15.1%	1701	72.1%	303	12.8%
2009-10						



AP (From SASI and Aeries data; Number of Students)	Latino		White		All Others	
	Number	Percent	Number	Percent	Number	Percent
2003-4	378	22.0%	1177	68.5%	162	9.4%
2004-5	411	23.1%	1195	67.2%	172	9.7%
2005-6	384	20.1%	1305	68.4%	219	11.5%
(roll over data missing) 2006-7						
2007-8	277	18.2%	1063	70.0%	179	11.8%
2008-9						



AP (From Aeries data; Seats taken in courses by semester)	Latino		White		All Others	
	Number	Percent	Number	Percent	Number	Percent
2007-8	765	15.2%	3603	71.6%	662	13.2%
2008-9						



Secondary District Continued

Academies (MAD, VADA, Green, Health, Eng; Unduplicated students)	Latino		White		All Others		Percent Latino
	Number	Percent	Number	Percent	Number	Percent	
2003-4							
2004-5							
2005-6							
(roll over data missing) 2006-7							
2007-8	124	21.4%	409	70.6%	46	7.9%	
2008-9	118	20.7%	384	67.4%	68	11.9%	

Academies (MAD, VADA, Green, Health, Eng; Seats, not students)	Latino		White		All Others		Percent Latino
	Number	Percent	Number	Percent	Number	Percent	
2003-4							
2004-5	303	19.8%	1121	73.1%	109	7.1%	
2005-6	471	22.4%	1495	71.0%	139	6.6%	
(roll over data missing) 2006-7							
2007-8	336	18.0%	1432	77.0%	98	5.0%	
2008-9							

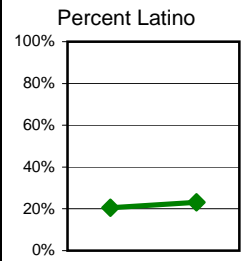
International Baccalaureate (at DP only, undup students)	Latino		White		All Others		Percent Latino
	Number	Percent	Number	Percent	Number	Percent	
2003-4							
2004-5							
2005-6							
(roll over data missing) 2006-7							
2007-8	25	15.3%	120	73.6%	18	11.0%	
2008-9							

International Baccalaureate (at DP only, Seats, not students)	Latino		White		All Others		Percent Latino
	Number	Percent	Number	Percent	Number	Percent	
2003-4							
2004-5							
2005-6							
(roll over data missing) 2006-7							
2007-8	96	13.3%	547	75.6%	81	11.2%	
2008-9							

Honors (Not GATE, IB, or AP; Undup students)	Latino		White		All Others		Percent Latino
	Number	Percent	Number	Percent	Number	Percent	
2003-4							
2004-5							
2005-6							
(roll over data missing) 2006-7							
2007-8	562	26.4%	1356	63.8%	208	9.8%	
2008-9							

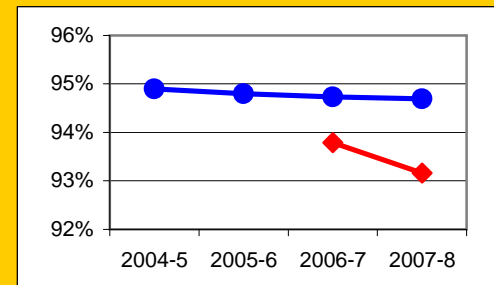
Secondary District Continued

Honors (Not GATE, IB, or AP; Seats, not students)	Latino		White		All Others	
	Number	Percent	Number	Percent	Number	Percent
2003-4						
2004-5						
2005-6	962	20.5%	3252	69.2%	483	10.3%
(roll over data missing) 2006-7						
2007-8	1173	23.2%	3382	66.9%	520	9.9%
2008-9						



Increase Efforts to Enhance Revenue

Attendance (Percent over year)	Lowest Month	District
2004-5		94.9%
2005-6		94.8%
2006-7	93.8%	94.7%
2007-8	93.2%	94.7%
2008-9		



Prepared by Dr. Davis Hayden, Director of Research, Evaluation, and Technology