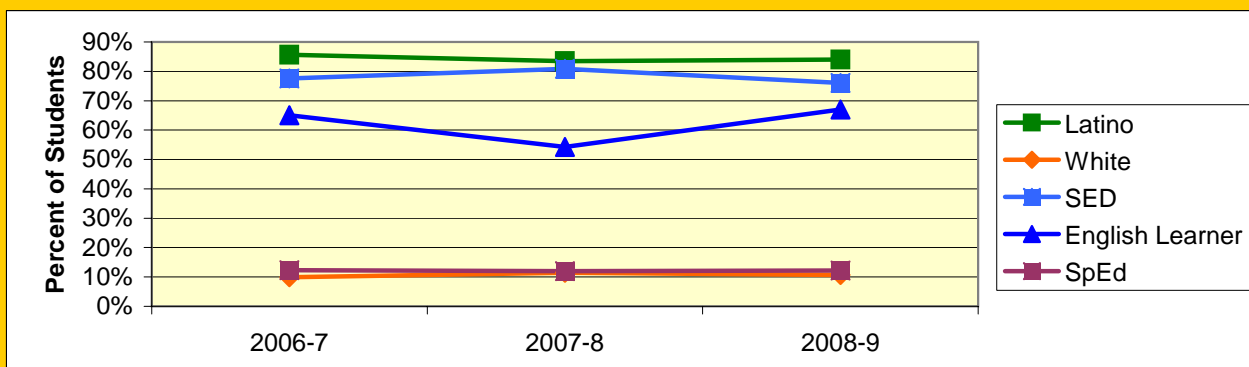
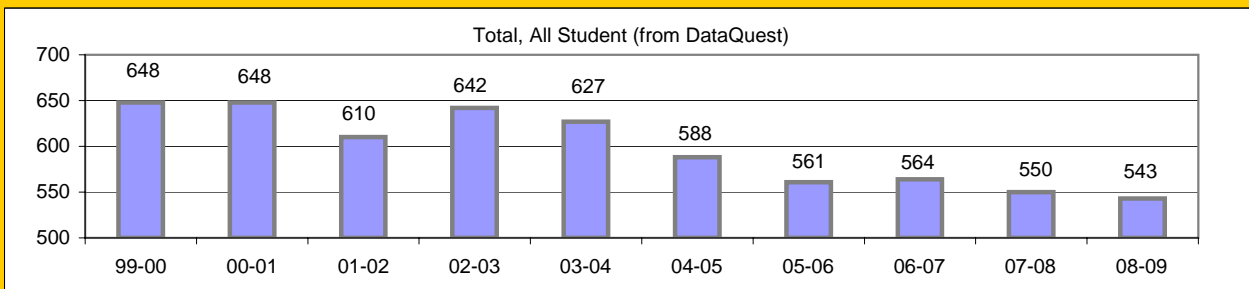


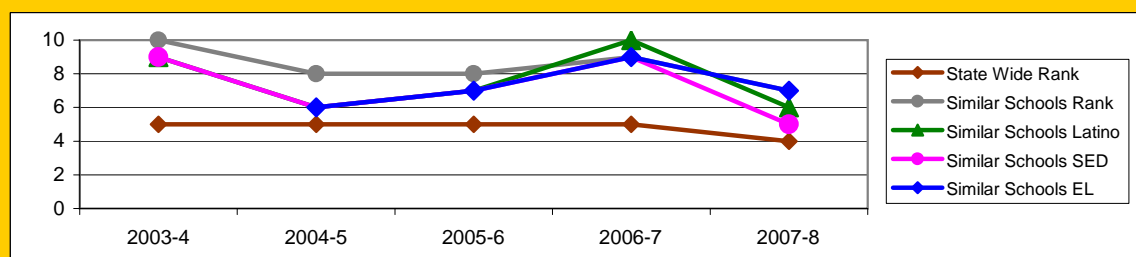
Board Focus Goals: Adams Elementary (20) - September 2009

Demographics (K-6, 0809 Aeries)	Total	Female	Male	Latino	White	SED	English Learner	SpEd
Number	531	276	255	447	57	403	356	65
Percent of Total		52.0%	48.0%	84.0%	10.7%	76.0%	67.0%	12.2%



Achieve a State Similar School Ranking of 8 or Higher (scale = 1-10)

	State Wide Rank	Similar Schools Rank	Similar Schools Latino	Similar Schools White	Similar Schools SED	Similar Schools EL	Similar Schools Disab
2003-4	5	10	9	NA	9	NA	NA
2004-5	5	8	6	NA	6	6	NA
2005-6	5	8	7	NA	7	7	NA
2006-7	5	9	10	NA	9	9	NA
2007-8	4	7	6	NA	5	7	NA

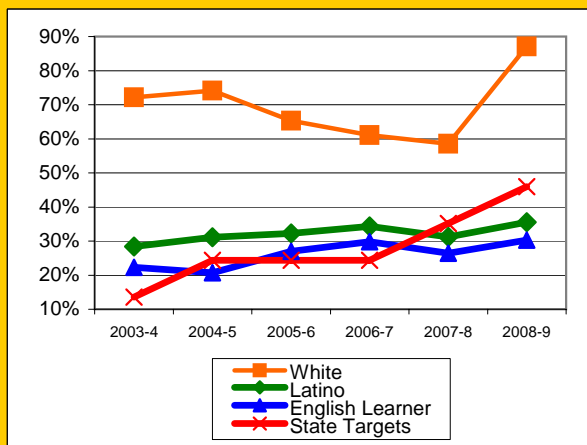


Exceed Federal Adequate Yearly Progress (AYP) Accountability Goals (Blue = Not enough students, Bold/underline/italic = Made by adjustment, Red = Did not pass

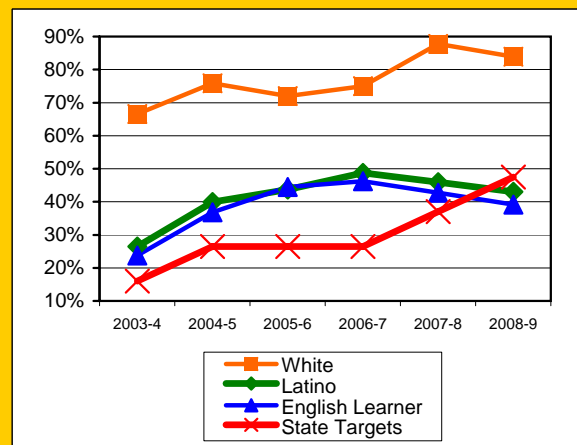
English Language Arts (ELA): Percent Proficient or Higher	State Targets	Schoolwide	Latino	White	Socio-Econ Disadv	English Learner	Stud with Disab	
2003-4	13.6%	38.6%	28.4%	72.2%	28.5%	22.3%	9.8%	
2004-5	24.4%	39.1%	31.1%	74.1%	28.6%	20.7%	5.9%	
2005-6	24.4%	37.8%	32.3%	65.3%	29.9%	27.0%	8.3%	
2006-7	24.4%	37.4%	34.3%	61.1%	32.2%	29.8%	12.2%	
2007-8	35.2%	<u>34.7%</u>	31.2%	58.5%	29.5%	26.4%	11.8%	Mark 1
2008-9	46.0%	<u>41.4%</u>	<u>35.5%</u>	87.1%	33.7%	30.3%	26.1%	Mark 2
State Average 2-12, 2008-9		52.4%	39.2%	70.3%	38.6%	33.5%	30.7%	
2009-10	56.8%							PI Y1

Math: Percent Proficient or Higher	State Targets	Schoolwide	Latino	White	Socio-Econ Disadv	English Learner	Stud with Disab	
2003-4	16.0%	36.1%	26.5%	66.6%	28.9%	23.8%	11.4%	
2004-5	26.5%	46.5%	39.9%	75.9%	38.5%	36.8%	4.5%	
2005-6	26.5%	47.5%	43.7%	72.0%	41.5%	44.5%	13.1%	
2006-7	26.5%	51.7%	48.7%	75.0%	47.7%	46.2%	18.4%	
2007-8	37.0%	50.5%	45.9%	87.8%	45.2%	42.7%	21.6%	
2008-9	47.5%	<u>47.1%</u>	43.0%	83.9%	41.6%	39.2%	34.0%	Mark 1
State Average 2-12, 2008-9		54.5%	44.0%	67.7%	43.9%	43.0%	32.3%	
2009-10	58.0%							PI Y1

ELA



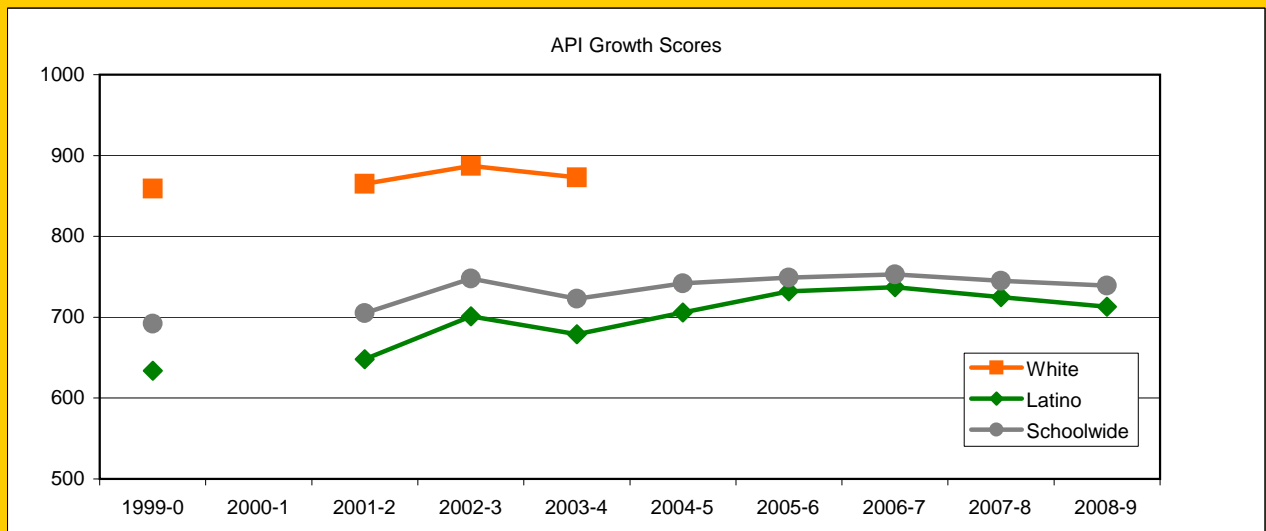
MATH



Adams Continued

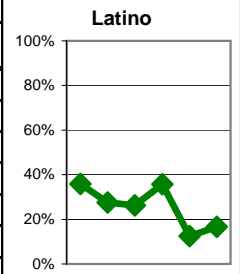
Exceed State Academic Performance Index (API) Growth Goals

	Schoolwide			Latino			White		
	Base	Growth/ Goal Met	STATE API (2-6)	Base	Growth/ Goal Met	STATE API (2-6)	Base	Growth/ Goal Met	STATE API (2-6)
2003-4	725	723 Not Met		675	679 Met		872	873 Met	
2004-5	726	742 Met		682	706 Met				
2005-6	742	749 Met	751	706	732 Met	687			838
2006-7	749	753 NotMet	761	732	737 Met	702			840
2007-8	766	745 NotMet	776	751	725 NotMet	722			850
2008-9	742	739 NotMet	790	724	713 NotMet	738			862



Increase Participation Across Demographic Spectrum in Advanced Courses

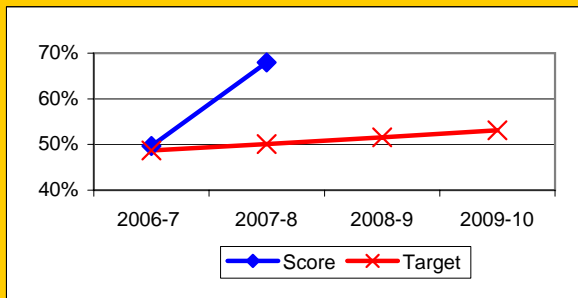
GATE (percent of all GATE students)	Latino		White		All Others	
	Number	Percent	Number	Percent	Number	Percent
2003-4	14	35.9%	20	51.3%	5	12.8%
2004-5	8	27.6%	14	48.3%	7	24.1%
2005-6	5	26.3%	12	63.2%	2	10.5%
2006-7	5	35.7%	8	57.1%	1	7.1%
2007-8	1	12.5%	7	87.5%	0	0.0%
2008-9	1	16.7%	5	83.3%	0	0.0%
2009-10						



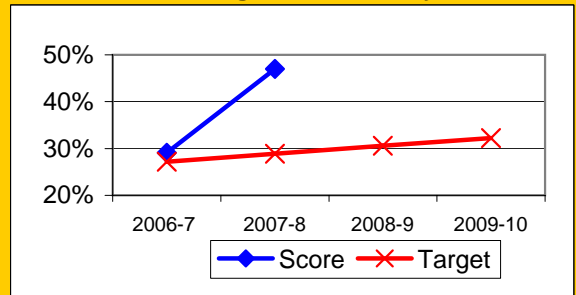
Progress on English Learners Gaining One Proficiency Level Annually and Attaining English Language Proficiency

	Gained one Level on CELDT		Gained English Proficiency		
	Target	Score	Target	Score	
2003-4	51.0%		30.0%		
2004-5	51.5%	62.5%	30.7%	38.6%	
2005-6	52.0%	68.3%	31.4%	46.5%	
2006-7	48.7%	49.7%	27.2%	29.1%	New Norms
2007-8	50.1%	68.0%	28.9%	47.0%	
2008-9	51.6%		30.6%		
2009-10	53.1%		32.2%		

Gained One Level On CELDT

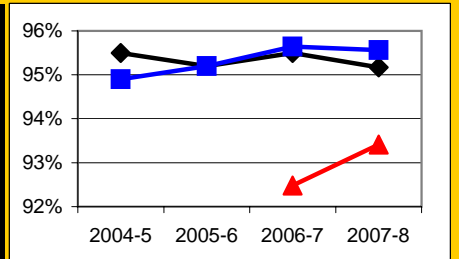


Attained English Proficiency



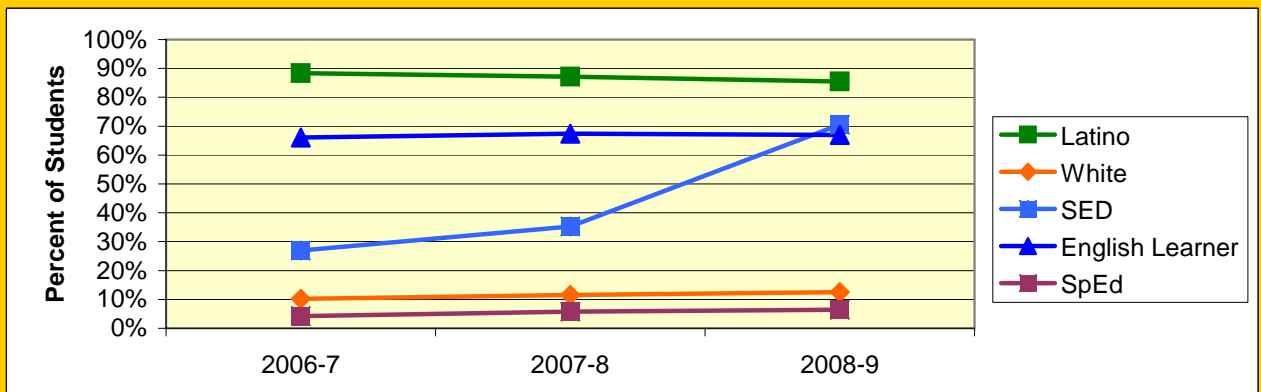
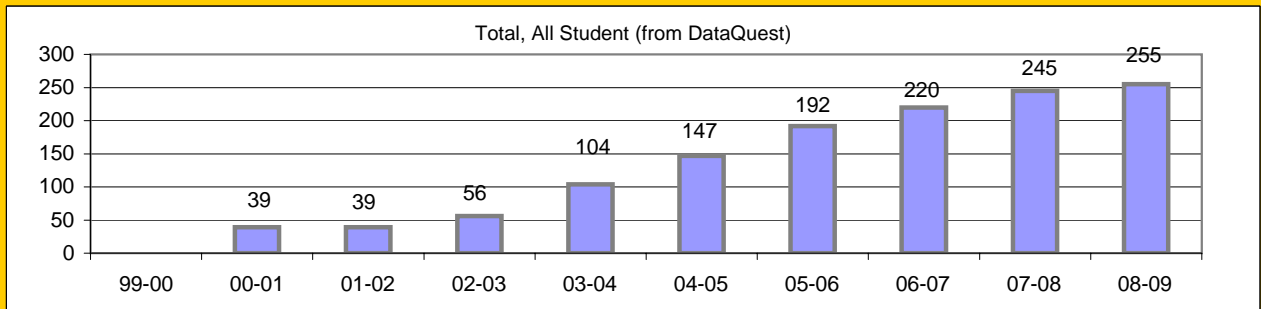
Increase Efforts to Enhance Revenue

Attendance (Percent over year)	Lowest Month	Whole Year	District
2004-5		95.5%	94.9%
2005-6		95.2%	95.2%
2006-7	92.5%	95.5%	95.6%
2007-8	93.4%	95.2%	95.6%
2008-09			



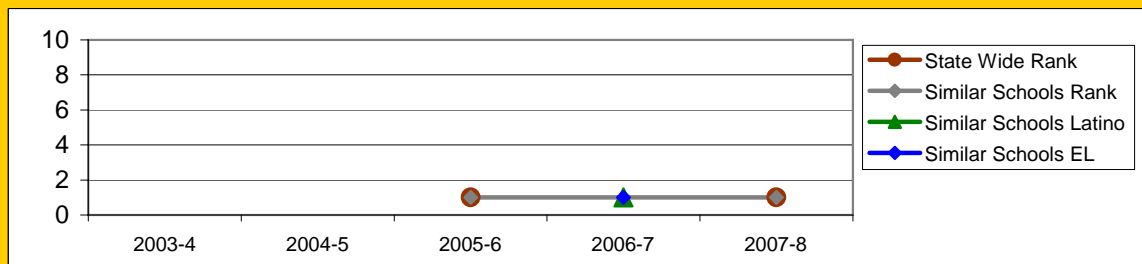
Board Focus Goals: Cesar Chavez Elementary (32) - September 2009

Demographics (K-6, 0809 Aeries)	Total	Female	Male	Latino	White	SED	English Learner	SpEd
Number	248	133	115	212	31	175	166	16
Percent of Total		53.6%	46.4%	85.5%	12.5%	70.6%	66.9%	6.5%



Achieve a State Similar School Ranking of 8 or Higher (scale = 1-10)

	State Wide Rank	Similar Schools Rank	Similar Schools Latino	Similar Schools White	Similar Schools SED	Similar Schools EL	Similar Schools Disab
2003-4			NA	NA	NA	NA	NA
2004-5			NA	NA	NA	NA	NA
2005-6	1	1	NA	NA	NA	NA	NA
2006-7	1	1	1	NA	NA	1	NA
2007-8	1	1	NA	NA	NA	NA	NA



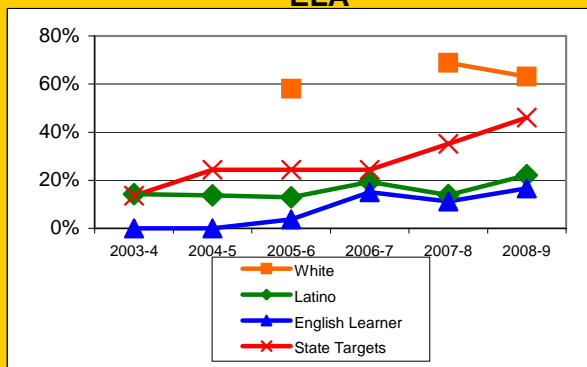
Cesar Chavez Continued

Exceed Federal Adequate Yearly Progress (AYP) Accountability Goals (Blue = Not enough students, Bold/underline/italic = Made by adjustment, Red = Did not pass

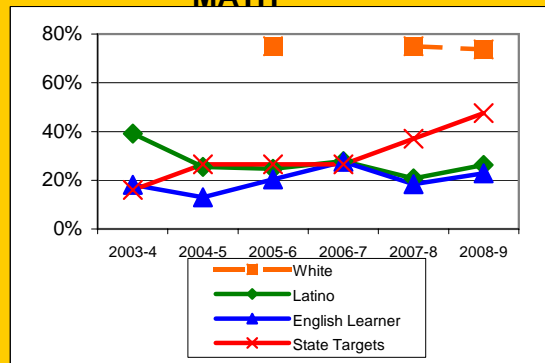
English Language Arts (ELA): Percent Proficient or Higher	State Targets	Schoolwide	Latino	White	Socio-Econ Disadv	English Learner	Stud with Disab	
2003-4	13.6%	21.8%	14.2%		4.0%	0.0%		
2004-5	24.4%	<u>17.2%</u>	13.7%		6.7%	0.0%		
2005-6	24.4%	17.9%	12.9%	58.0%	0.0%	3.7%		Mark 1
2006-7	24.4%	24.6%	<u>19.3%</u>		15.8%	<u>15.0%</u>		
2007-8	35.2%	20.0%	13.8%	68.8%	5.3%	11.2%	9.1%	Mark 1
2008-9	46.0%	<u>28.3%</u>	<u>22.1%</u>	63.2%	<u>20.2%</u>	16.7%	42.9%	Mark 2
State Average 2-12, 2008-9		52.4%	39.2%	70.3%	38.6%	33.5%	30.7%	
2009-10	56.8%							PI Y1

Math: Percent Proficient or Higher	State Targets	Schoolwide	Latino	White	Socio-Econ Disadv	English Learner	Stud with Disab	
2003-4	16.0%	46.8%	39.2%		36.0%	18.1%		
2004-5	26.5%	<u>31.0%</u>	25.5%		22.2%	13.0%		
2005-6	26.5%	31.1%	<u>24.7%</u>	75.0%	10.0%	20.4%		Mark 1
2006-7	26.5%	33.3%	27.8%		19.4%	27.6%		
2007-8	37.0%	27.3%	20.8%	75.0%	12.3%	18.4%	36.4%	Mark 1
2008-9	47.5%	<u>32.5%</u>	<u>26.3%</u>	73.7%	<u>21.7%</u>	22.9%	26.7%	Mark 2
State Average 2-12, 2008-9		54.5%	44.0%	67.7%	43.9%	43.0%	32.3%	
2009-10	58.0%							PI Y1

ELA

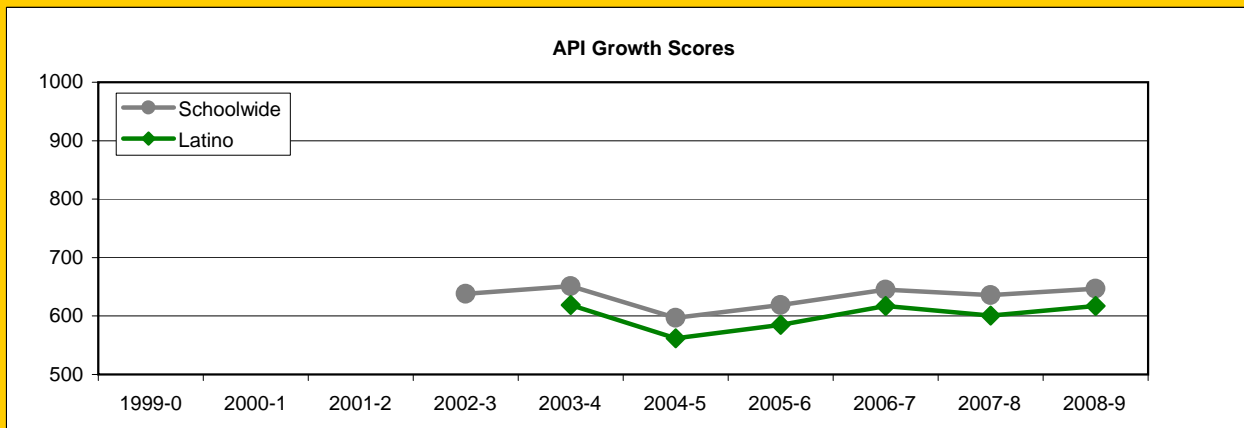


MATH



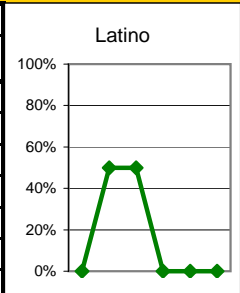
Exceed State Academic Performance Index (API) Growth Goals

	Schoolwide			Latino			White		
	Base	Growth/ Goal Met	STATE API (2-6)	Base	Growth/ Goal Met	STATE API (2-6)	Base	Growth/ Goal Met	STATE API (2-6)
2003-4	640	651 met			619				
2004-5	651	597 Not Met			562				
2005-6	597	619 Met	751	562	585 Met	687			838
2006-7	620	645 Met	761	587	617 Met	702			840
2007-8	655	636 NotMet	776	627	601 NotMet	722			850
2008-9	641	647 NotMet	790	608	617 NotMet	738			862



Increase Participation Across Demographic Spectrum in Advanced Courses

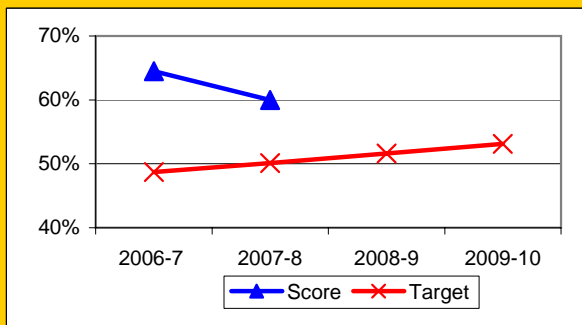
GATE (percent of all GATE students)	Latino		White		All Others	
	Number	Percent	Number	Percent	Number	Percent
2003-4	0	0.0%	1	100.0%	0	0.0%
2004-5	1	50.0%	1	50.0%	0	0.0%
2005-6	1	50.0%	1	50.0%	0	0.0%
2006-7	0	0.0%	0	0.0%	0	0.0%
2007-8	0	0.0%	1	100.0%	0	0.0%
2008-9	0	0.0%	1	100.0%	0	0.0%
2009-10						



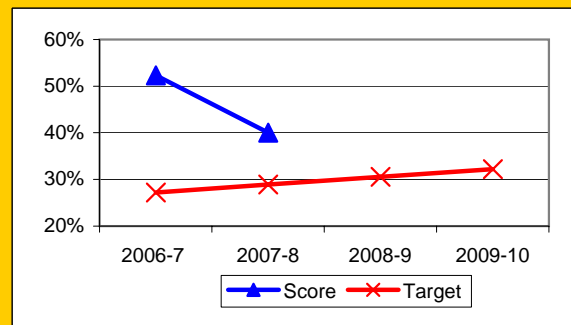
Progress on English Learners Gaining One Proficiency Level Annually and Attaining English Language Proficiency

	Gained one Level on CELDT		Gained English Proficiency		
	Target	Score	Target	Score	
2003-4	51.0%		30.0%		
2004-5	51.5%	57.4%	30.7%		
2005-6	52.0%		31.4%		
2006-7	48.7%	64.5%	27.2%	52.3%	New Norms
2007-8	50.1%	60.0%	28.9%	40.0%	
2008-9	51.6%		30.6%		
2009-10	53.1%		32.2%		

Gained One Level On CELDT

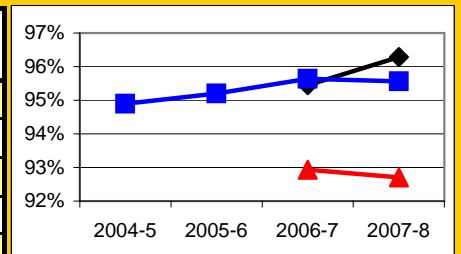


Attained English Proficiency



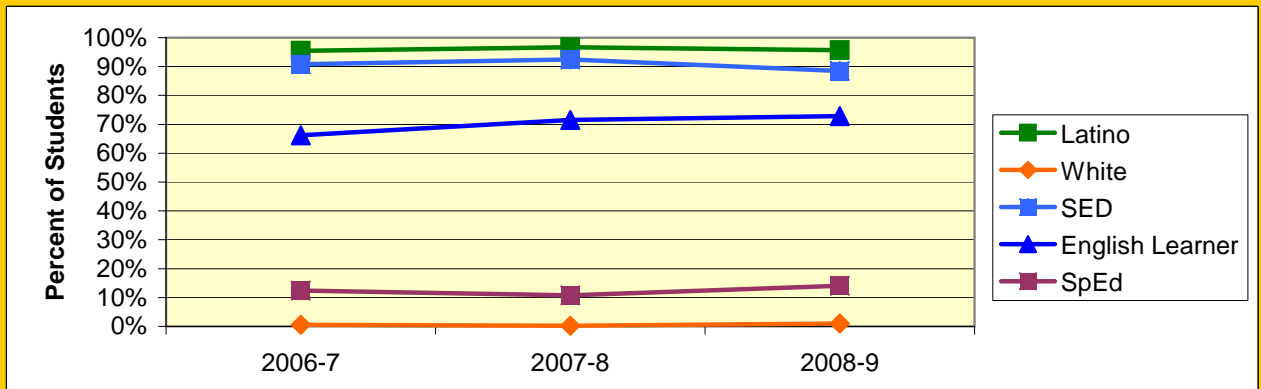
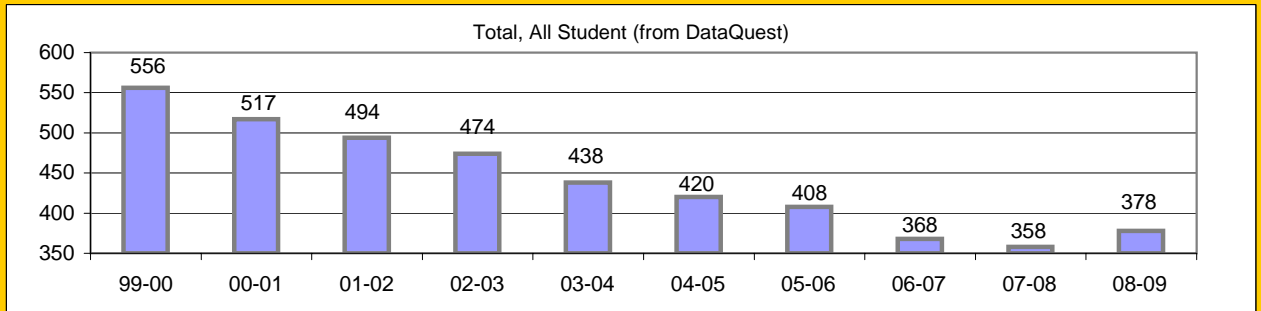
Increase Efforts to Enhance Revenue

Attendance (Percent over year)	Lowest Month	Whole Year	District
2004-5			94.9%
2005-6			95.2%
2006-7	92.9%	95.5%	95.6%
2007-8	92.7%	96.3%	95.6%
2008-9			



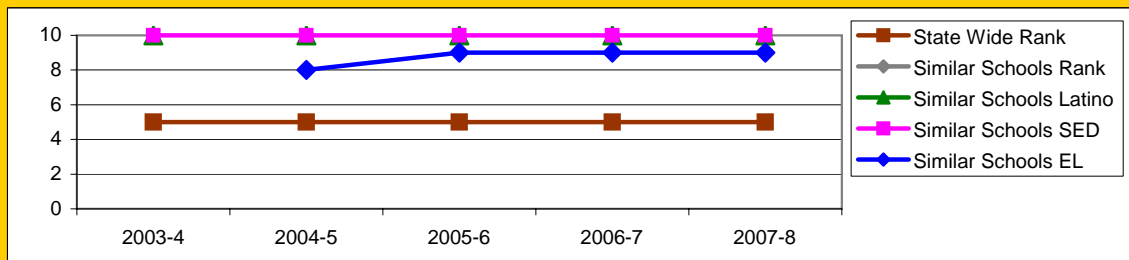
Board Focus Goals: Cleveland Elementary (21) - September 2009

Demographics (K-6, 0809 Aeries)	Total	Female	Male	Latino	White	SED	English Learner	SpEd
Number	391	187	204	374	4	346	285	55
Percent of Total		47.8%	52.2%	95.7%	1.0%	88.5%	72.9%	14.1%



Achieve a State Similar School Ranking of 8 or Higher (scale = 1-10)

	State Wide Rank	Similar Schools Rank	Similar Schools Latino	Similar Schools White	Similar Schools SED	Similar Schools EL	Similar Schools Disab
2003-4	5	10	10	NA	10	NA	NA
2004-5	5	10	10	NA	10	8	NA
2005-6	5	10	10	NA	10	9	NA
2006-7	5	10	10	NA	10	9	NA
2007-8	5	10	10	NA	10	9	NA



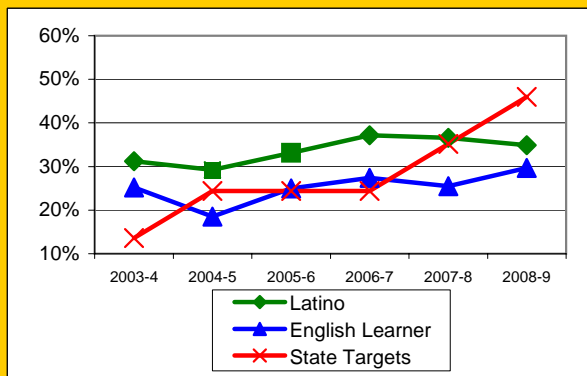
Cleveland Continued

Exceed Federal Adequate Yearly Progress (AYP) Accountability Goals (Blue = Not enough students, *Bold/underline/italic* = Made by adjustment, Red = Did not pass

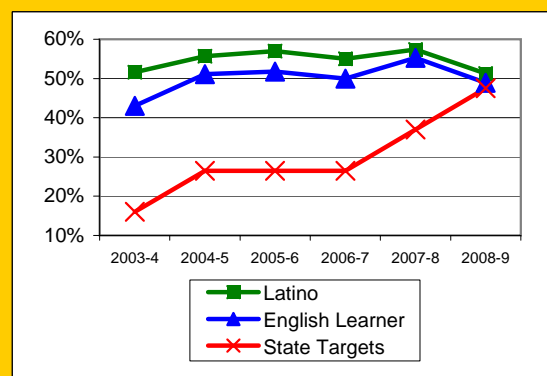
English Language Arts (ELA): Percent Proficient or Higher	State Targets	Schoolwide	Latino	White	Socio-Econ Disadv	English Learner	Stud with Disab	
2003-4	13.6%	33.2%	31.2%		29.4%	25.2%	4.8%	
2004-5	24.4%	29.4%	29.2%		27.0%	18.5%	4.4%	
2005-6	24.4%	33.2%	33.1%		32.6%	25.0%	12.8%	
2006-7	24.4%	37.4%	37.2%		35.2%	27.4%	18.8%	
2007-8	35.2%	36.2%	36.6%		35.8%	25.5%	31.6%	Mark 1
2008-9	46.0%	34.9%	34.9%		34.1%	29.7%	38.9%	Mark 2
State Average 2-12, 2008-9		52.4%	39.2%	70.3%	38.6%	33.5%	30.7%	
2009-10	56.8%							PI Y1

Math: Percent Proficient or Higher	State Targets	Schoolwide	Latino	White	Socio-Econ Disadv	English Learner	Stud with Disab	
2003-4	16.0%	52.2%	51.6%		48.4%	43.0%	12.5%	
2004-5	26.5%	55.6%	55.7%		54.8%	51.1%	9.1%	
2005-6	26.5%	56.8%	57.0%		56.8%	51.8%	23.1%	
2006-7	26.5%	54.7%	55.0%		53.2%	50.0%	31.3%	
2007-8	37.0%	57.4%	57.4%		57.0%	55.3%	44.7%	
2008-9	47.5%	51.0%	51.3%		49.6%	48.9%	68.4%	
State Average 2-12, 2008-9		54.5%	44.0%	67.7%	43.9%	43.0%	32.3%	
2009-10	58.0%							PI Y1

ELA

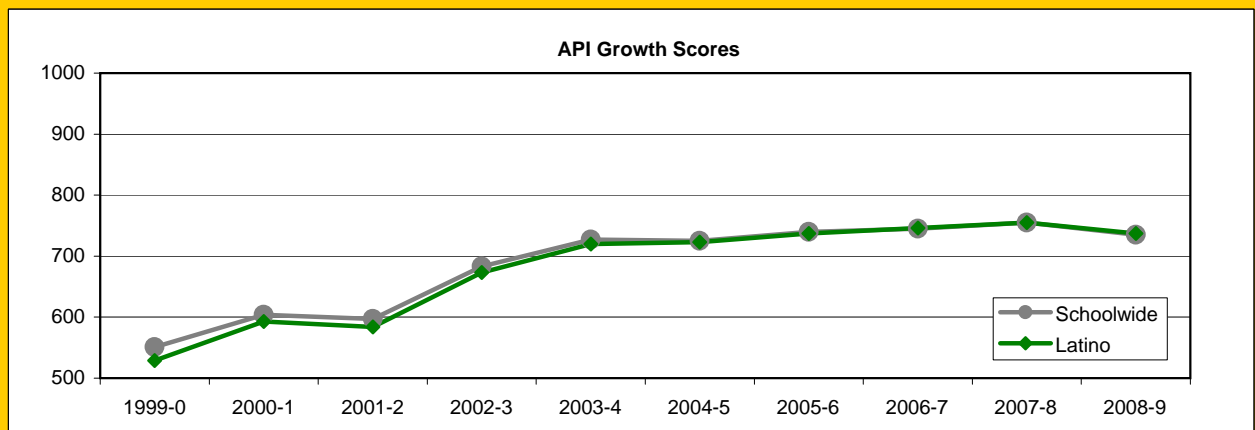


MATH



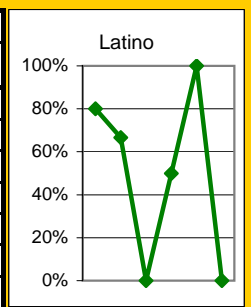
Exceed State Academic Performance Index (API) Growth Goals

	Schoolwide			Latino			White		
	Base	Growth/ Goal Met	STATE API (2-6)	Base	Growth/ Goal Met	STATE API (2-6)	Base	Growth/ Goal Met	STATE API (2-6)
2003-4	678	727 Met		668	720 Met				
2004-5	729	725 Not Met		721	723 Not Met				
2005-6	725	740 Met	751	723	737 Met	687			838
2006-7	739	745 Met	761	737	746 Met	702			840
2007-8	754	755 Not Met	776	755	755 Not Met	722			850
2008-9	762	735 Not Met	790	762	737 Not Met	738			862



Increase Participation Across Demographic Spectrum in Advanced Courses

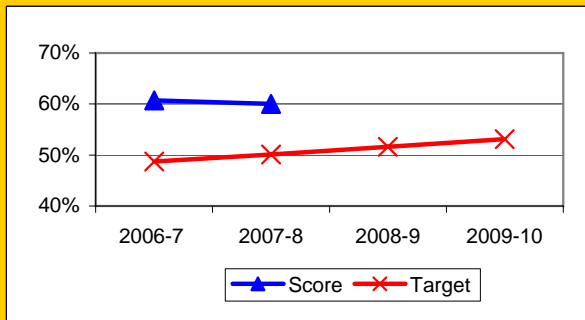
GATE (percent of all GATE students)	Latino		White		All Others	
	Number	Percent	Number	Percent	Number	Percent
2003-4	4	80.0%	0	0.0%	1	20.0%
2004-5	2	66.7%	0	0.0%	1	33.3%
2005-6	0	0.0%	1	100.0%	0	0.0%
2006-7	1	50.0%	1	50.0%	0	0.0%
2007-8	1	100.0%	0	0.0%	0	0.0%
2008-9	0	0.0%	0	0.0%	0	0.0%
2009-10						



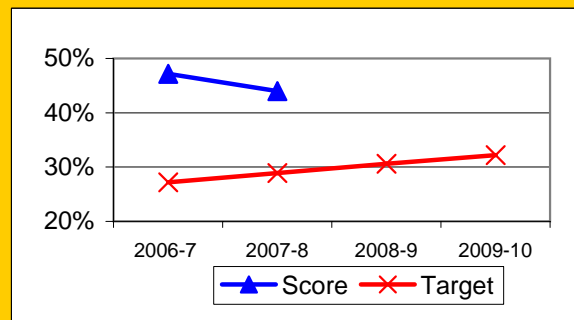
Progress on English Learners Gaining One Proficiency Level Annually and Attaining English Language Proficiency

	Gained one Level on CELDT		Gained English Proficiency		
	Target	Score	Target	Score	
2003-4	51.0%		30.0%		
2004-5	51.5%	57.1%	30.7%	40.6%	
2005-6	52.0%	58.4%	31.4%	35.4%	
2006-7	48.7%	60.7%	27.2%	47.2%	New Norms
2007-8	50.1%	60.0%	28.9%	44.0%	
2008-9	51.6%		30.6%		
2009-10	53.1%		32.2%		

Gained One Level On CELDT

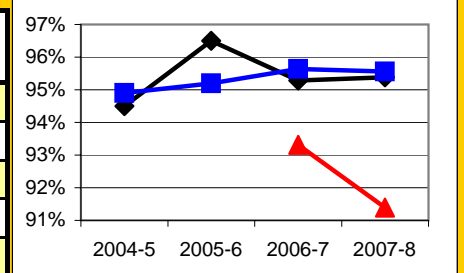


Attained English Proficiency



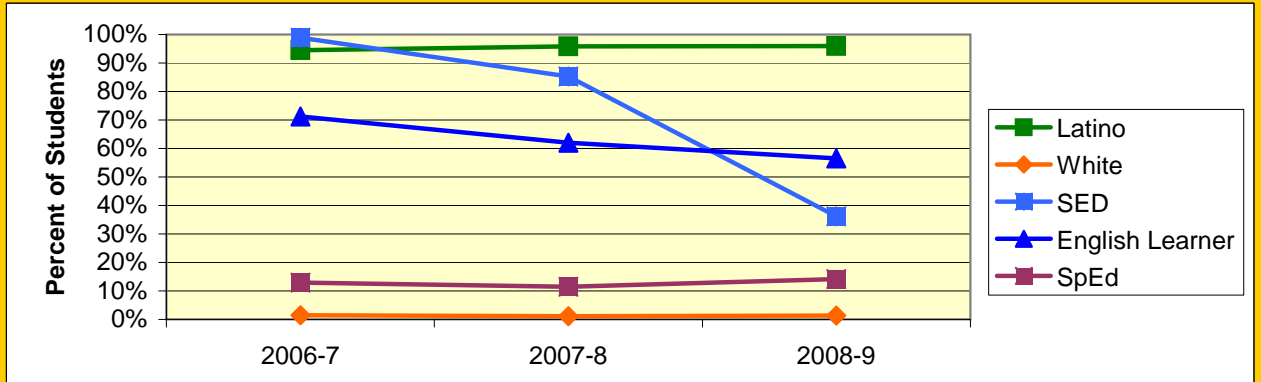
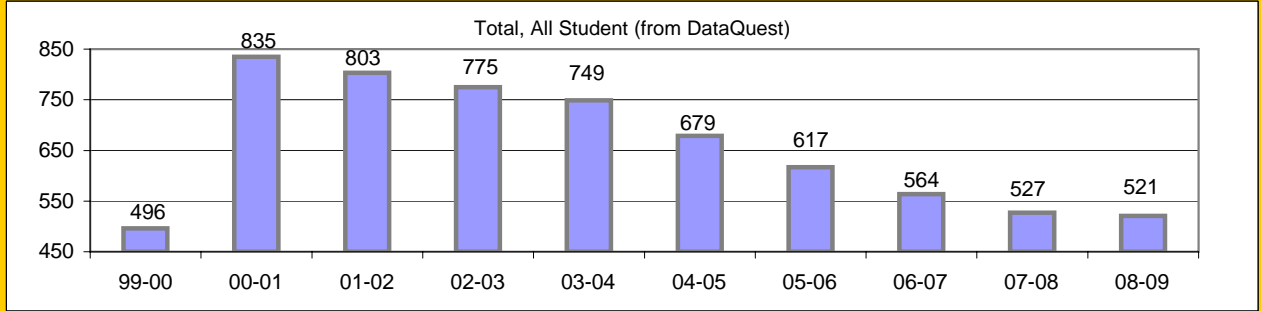
Increase Efforts to Enhance Revenue

Attendance (Percent over year)	Lowest Month	Whole Year	District
2004-5		94.5%	94.9%
2005-6		96.5%	95.2%
2006-7	93.3%	95.3%	95.6%
2007-8	91.4%	95.4%	95.6%
2008-9			



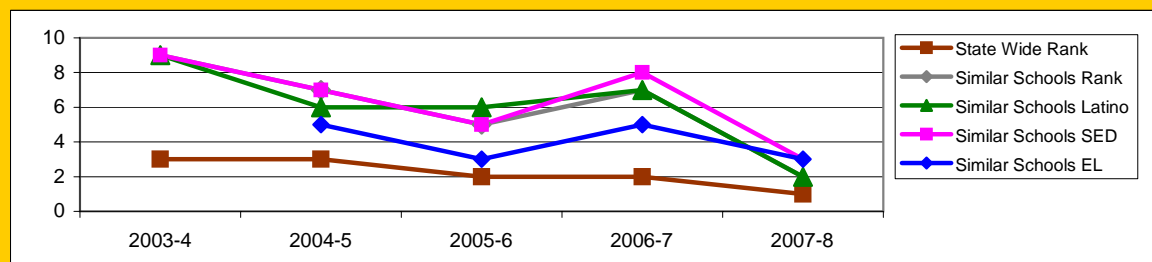
Board Focus Goals: Franklin Elementary (22) - September 2009

Demographics (K-6, 0809 Aeries)	Total	Female	Male	Latino	White	SED	English Learner	SpEd
Number	517	245	272	496	7	187	292	73
Percent of Total		47.4%	52.6%	95.9%	1.4%	36.2%	56.5%	14.1%



Achieve a State Similar School Ranking of 8 or Higher (scale = 1-10)

	State Wide Rank	Similar Schools Rank	Similar Schools Latino	Similar Schools White	Similar Schools SED	Similar Schools EL	Similar Schools Disab
2003-4	3	9	9	NA	9	NA	NA
2004-5	3	7	6	NA	7	5	NA
2005-6	2	5	6	NA	5	3	NA
2006-7	2	7	7	NA	8	5	NA
2007-8	1	2	2	NA	3	3	NA

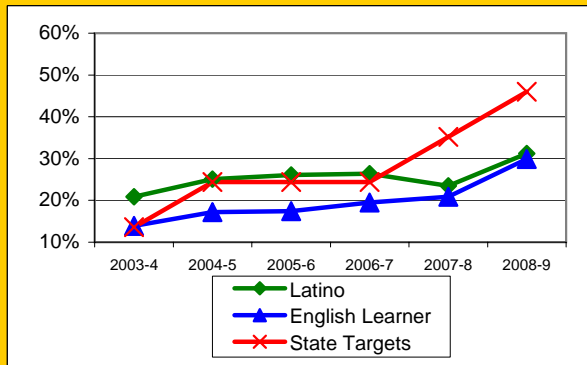


Exceed Federal Adequate Yearly Progress (AYP) Accountability Goals (Blue = Not enough students, Bold/underline/italic = Made by adjustment, Red = Did not pass

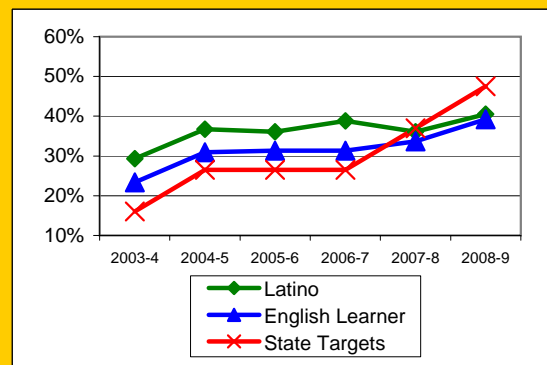
English Language Arts (ELA): Percent Proficient or Higher	State Targets	Schoolwide	Latino	White	Socio-Econ Disadv	English Learner	Stud with Disab	
2003-4	13.6%	21.4%	20.9%		21.5%	13.9%	4.3%	
2004-5	24.4%	25.3%	25.1%		25.3%	17.2%	1.8%	Mark 1
2005-6	24.4%	26.5%	26.1%		26.5%	17.4%	1.9%	Mark 2
2006-7	24.4%	26.3%	26.4%		26.3%	19.5%	7.1%	PI Y1
2007-8	35.2%	24.5%	23.5%		25.1%	20.9%	16.7%	PI Y2
2008-9	46.0%	<u>32.6%</u>	<u>31.2%</u>		<u>33.6%</u>	<u>29.9%</u>	<u>22.2%</u>	PI Y3
State Average 2-12, 2008-9		52.4%	39.2%	70.3%	38.6%	33.5%	30.7%	
2009-10	56.8%							F-PI Y3

Math: Percent Proficient or Higher	State Targets	Schoolwide	Latino	White	Socio-Econ Disadv	English Learner	Stud with Disab	
2003-4	16.0%	29.7%	29.3%		29.6%	23.4%	15.9%	
2004-5	26.5%	36.4%	36.7%		36.4%	30.9%	0.0%	
2005-6	26.5%	36.7%	36.1%		36.7%	31.3%	13.0%	
2006-7	26.5%	39.1%	38.8%		39.1%	31.3%	8.9%	PI Y1
2007-8	37.0%	<u>36.5%</u>	<u>36.1%</u>		37.0%	33.7%	18.5%	PI Y2
2008-9	47.5%	<u>41.0%</u>	<u>40.5%</u>		<u>42.1%</u>	<u>39.2%</u>	<u>35.6%</u>	PI Y3
State Average 2-12, 2008-9		54.5%	44.0%	67.7%	43.9%	43.0%	32.3%	
2009-10	58.0%							F-PI Y3

ELA

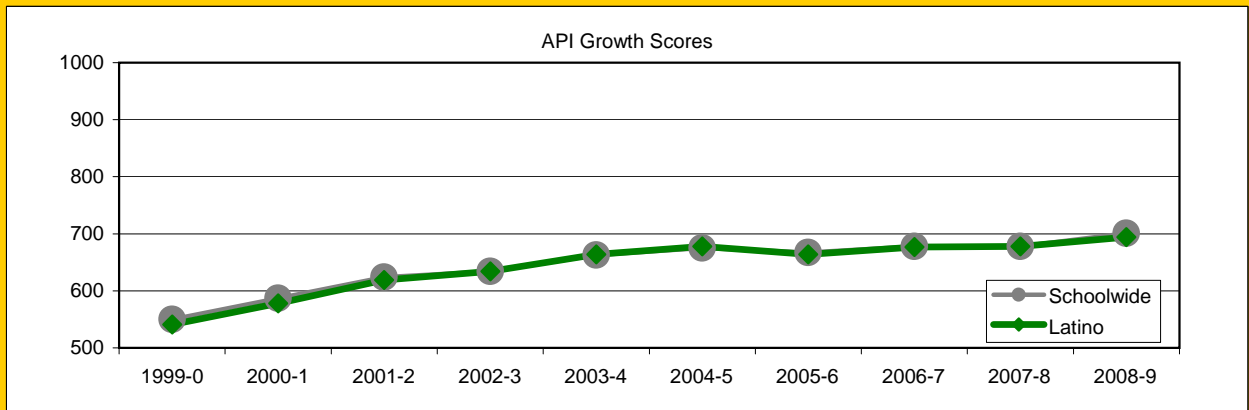


MATH



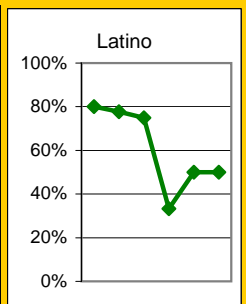
Exceed State Academic Performance Index (API) Growth Goals

	Schoolwide			Latino			White		
	Base	Growth/ Goal Met	STATE API (2-6)	Base	Growth/ Goal Met	STATE API (2-6)	Base	Growth/ Goal Met	STATE API (2-6)
2003-4	633	663 Met		633	664 Met				
2004-5	666	675 Met		666	678 Met				
2005-6	675	667 Not Met	751	678	664 Not Met	687			838
2006-7	669	678 Met	761	666	677 Met	702			840
2007-8	697	678 Not Met	776	695	678 Not Met	722			850
2008-9	677	701 Met	790	676	694 Met	738			862



Increase Participation Across Demographic Spectrum in Advanced Courses

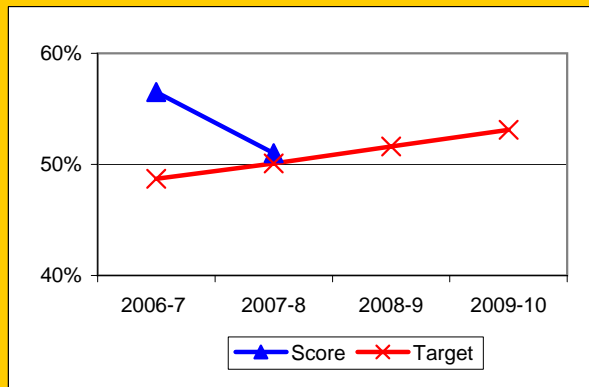
GATE (percent of all GATE students)	Latino		White		All Others	
	Number	Percent	Number	Percent	Number	Percent
2003-4	8	80.0%	2	20.0%	0	0.0%
2004-5	7	77.8%	2	22.2%	0	0.0%
2005-6	3	75.0%	1	25.0%	0	0.0%
2006-7	1	33.3%	1	33.3%	1	33.3%
2007-8	1	50.0%	1	50.0%	0	0.0%
2008-9	1	50.0%	1	50.0%	0	0.0%
2009-10						



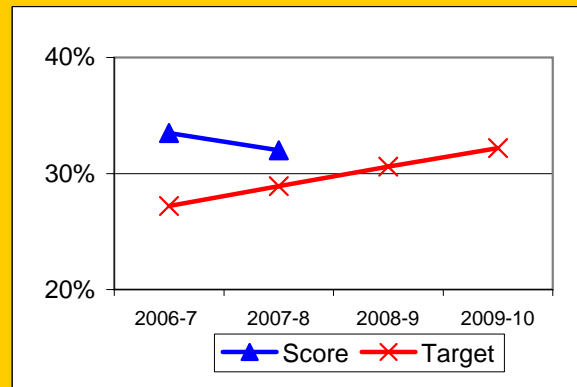
Progress on English Learners Gaining One Proficiency Level Annually and Attaining English Language Proficiency

	Gained one Level on CELDT		Gained English Proficiency		
	Target	Score	Target	Score	
2003-4	51.0%		30.0%		
2004-5	51.5%	55.3%	30.7%	35.1%	
2005-6	52.0%	55.5%	31.4%	35.2%	
2006-7	48.7%	56.5%	27.2%	33.5%	New Norms
2007-8	50.1%	51.0%	28.9%	32.0%	
2008-9	51.6%		30.6%		
2009-10	53.1%		32.2%		

Gained One Level On CELDT

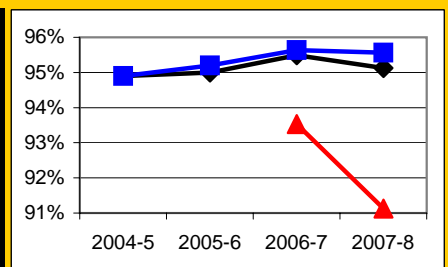


Attained English Proficiency



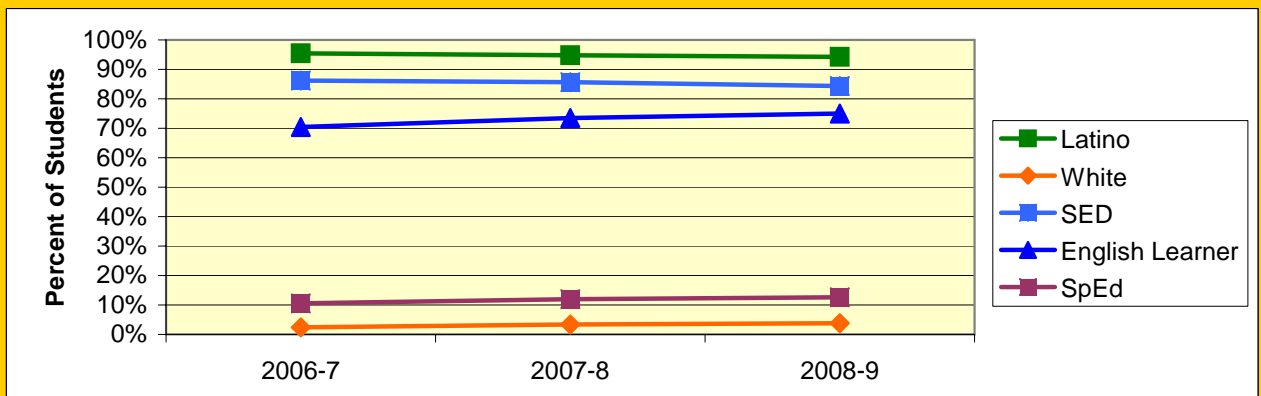
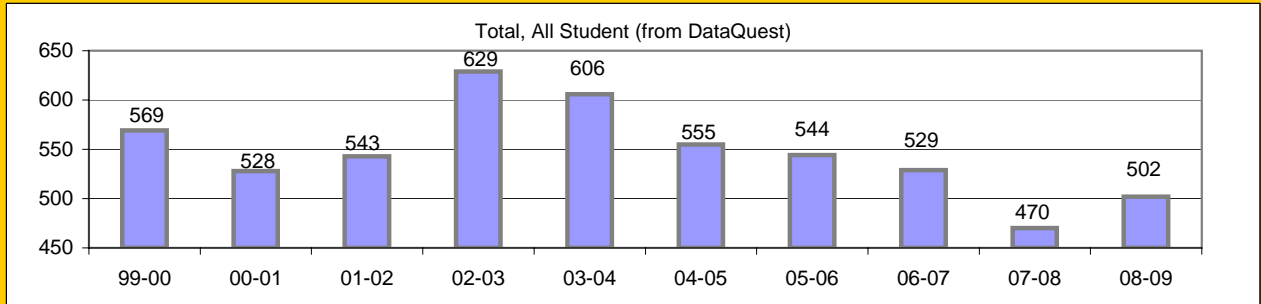
Increase Efforts to Enhance Revenue

Attendance (Percent over year)	Lowest Month	Whole Year	District
2004-5		94.9%	94.9%
2005-6		95.0%	95.2%
2006-7	93.5%	95.5%	95.6%
2007-8	91.1%	95.1%	95.6%
2008-9			



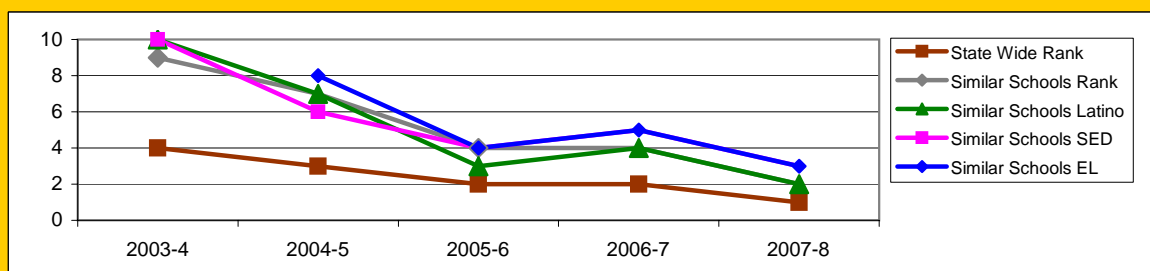
Board Focus Goals: Harding Elementary (24) - September 2009

Demographics (K-6, 0809 Aeries)	Total	Female	Male	Latino	White	SED	English Learner	SpEd
Number	499	229	270	470	19	421	374	63
Percent of Total		45.9%	54.1%	94.2%	3.8%	84.4%	74.9%	12.6%



Achieve a State Similar School Ranking of 8 or Higher (scale = 1-10)

	State Wide Rank	Similar Schools Rank	Similar Schools Latino	Similar Schools White	Similar Schools SED	Similar Schools EL	Similar Schools Disab
2003-4	4	9	10	NA	10	NA	NA
2004-5	3	7	7	NA	6	8	NA
2005-6	2	4	3	NA	4	4	NA
2006-7	2	4	4	NA	5	5	NA
2007-8	1	2	2	NA	3	3	NA



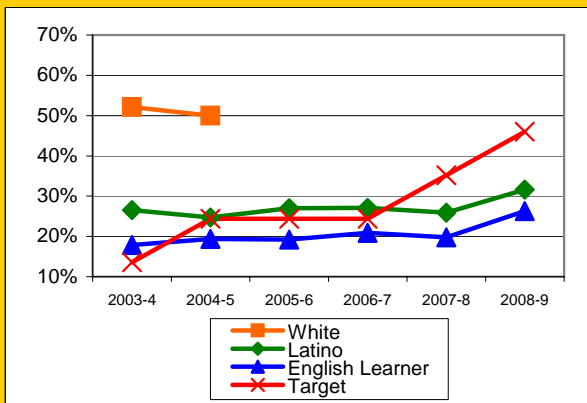
Harding Continued

Exceed Federal Adequate Yearly Progress (AYP) Accountability Goals (Blue = Not enough students, Bold/underline/italic = Made by adjustment, Red = Did not pass

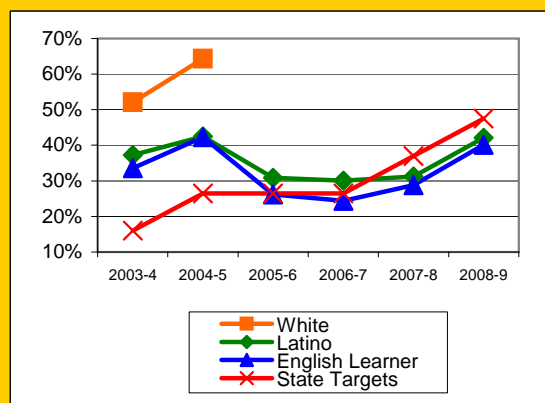
English Language Arts (ELA): Percent Proficient or Higher	State Targets	Schoolwide	Latino	White	Socio-Econ Disadv	English Learner	Stud with Disab	
2003-4	13.6%	27.8%	26.5%	52.1%	23.4%	17.9%	2.4%	
2004-5	24.4%	25.8%	24.7%	50.0%	21.3%	19.4%	2.6%	Mark 1
2005-6	24.4%	28.3%	27.0%		25.6%	19.2%	11.8%	Mark 2
2006-7	24.4%	27.8%	27.1%		26.3%	20.9%	8.7%	PI Y1
2007-8	35.2%	27.1%	25.9%		25.4%	19.8%	25.8%	PI Y2
2008-9	46.0%	33.0%	31.6%		29.7%	26.3%	27.3%	PI Y3
State Average 2-12, 2008-9		52.4%	39.2%	70.3%	38.6%	33.5%	30.7%	
2009-10	56.8%							PI Y4

Math: Percent Proficient or Higher	State Targets	Schoolwide	Latino	White	Socio-Econ Disadv	English Learner	Stud with Disab	
2003-4	16.0%	37.7%	37.3%	52.1%	34.8%	33.6%	4.8%	
2004-5	26.5%	43.3%	42.5%	64.3%	39.5%	42.3%	18.4%	
2005-6	26.5%	31.9%	30.9%		30.0%	26.2%	20.6%	
2006-7	26.5%	30.1%	30.1%		27.1%	24.4%	8.7%	PI Y1
2007-8	37.0%	31.7%	31.2%		31.7%	28.8%	27.3%	PI Y2
2008-9	47.5%	42.8%	42.1%		42.2%	40.2%	36.0%	PI Y3
State Average 2-12, 2008-9		54.5%	44.0%	67.7%	43.9%	43.0%	32.3%	
2009-10	58.0%							PI Y4

ELA

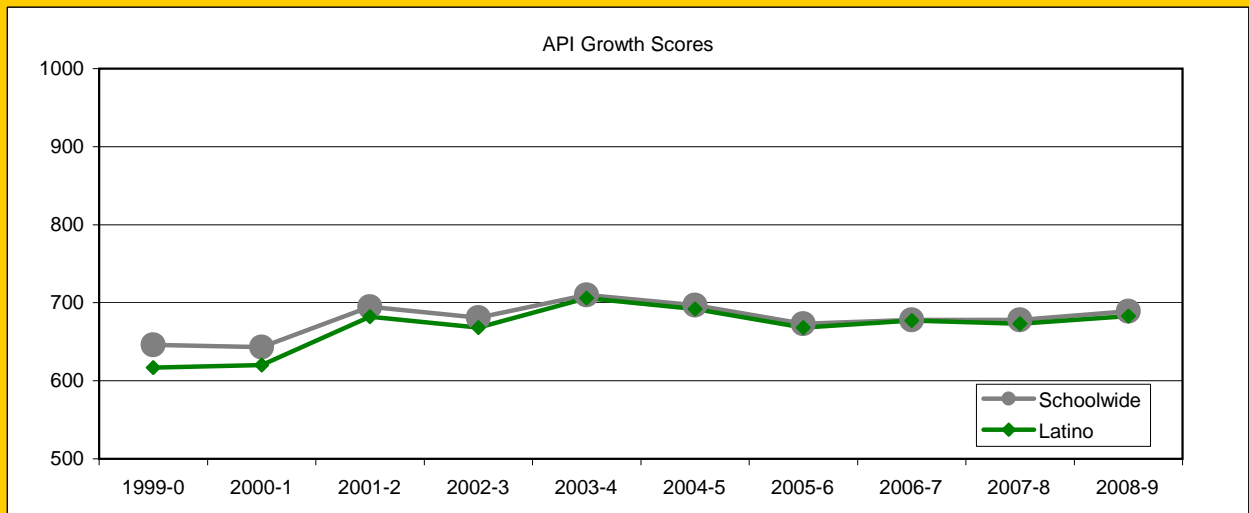


MATH



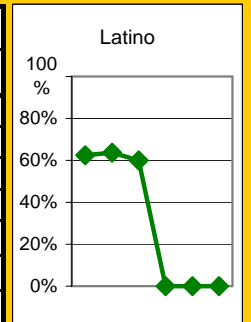
Exceed State Academic Performance Index (API) Growth Goals

	Schoolwide			Latino			White		
	Base	Growth/ Goal Met	STATE API (2-6)	Base	Growth/ Goal Met	STATE API (2-6)	Base	Growth/ Goal Met	STATE API (2-6)
2003-4	682	710 Met		668	706 Met				
2004-5	702	697 Not Met		698	692 Not Met				
2005-6	697	673 Not Met	751	692	668 Not Met	687			838
2006-7	673	678 Not Met	761	669	677 Met	702			840
2007-8	689	678 Not Met	776	687	673 Not Met	722			850
2008-9	680	689 Met	790	676	683 Met	738			862



Increase Participation Across Demographic Spectrum in Advanced Courses

GATE (percent of all GATE students)	Latino		White		All Others	
	Number	Percent	Number	Percent	Number	Percent
2003-4	10	62.5%	5	31.3%	1	6.3%
2004-5	7	63.6%	3	27.3%	1	9.1%
2005-6	3	60.0%	1	20.0%	1	20.0%
2006-7	0	0.0%	1	100.0%	0	0.0%
2007-8	0	0.0%	1	100.0%	0	0.0%
2008-9	0	0.0%	1	100.0%	0	0.0%
2009-10						

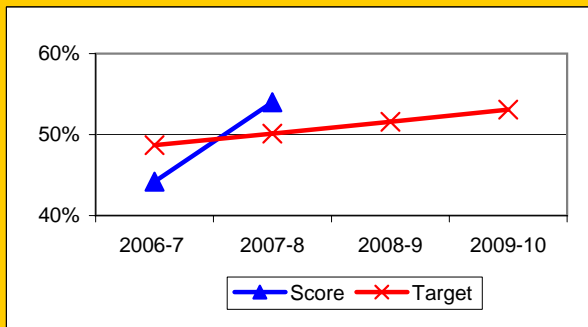


Harding Continued

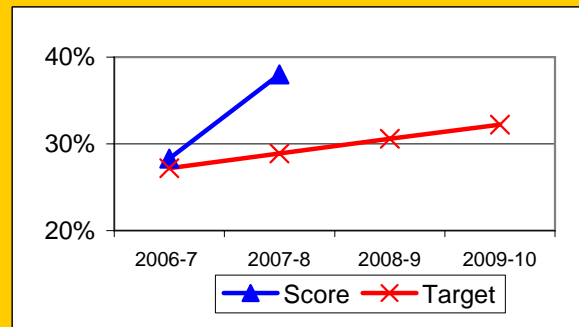
Progress on English Learners Gaining One Proficiency Level Annually and Attaining English Language Proficiency

	Gained one Level on CELDT		Gained English Proficiency		
	Target	Score	Target	Score	
2003-4	51.0%		30.0%		
2004-5	51.5%	51.3%	30.7%	35.3%	
2005-6	52.0%	60.1%	31.4%	46.8%	
2006-7	48.7%	44.2%	27.2%	28.3%	New Norms
2007-8	50.1%	54.0%	28.9%	38.0%	
2008-9	51.6%		30.6%		
2009-10	53.1%		32.2%		

Gained One Level On CELDT

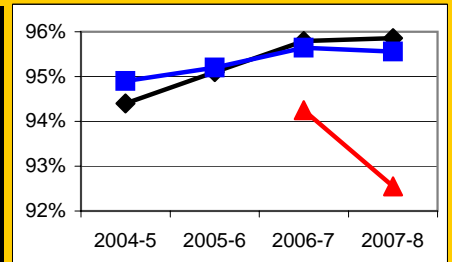


Attained English Proficiency



Increase Efforts to Enhance Revenue

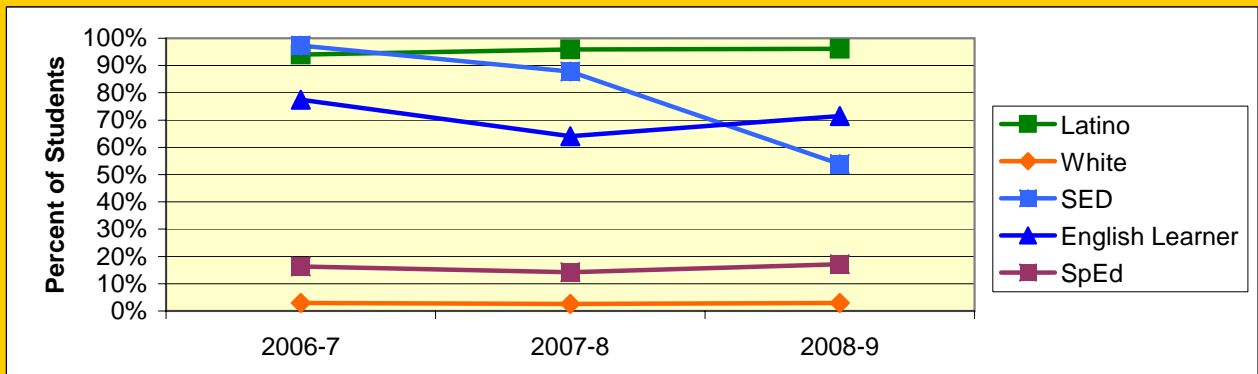
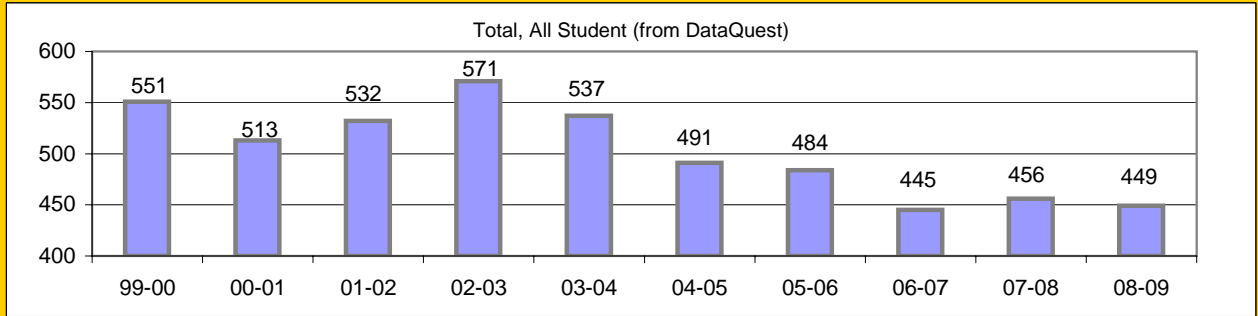
Attendance (Percent over year)	Lowest Month	Whole Year	District
2004-5		94.4%	94.9%
2005-6		95.1%	95.2%
2006-7	94.3%	95.8%	95.6%
2007-8	92.6%	95.9%	95.6%
2008-9			



Prepared by Dr. Davis Hayden, Director of Research, Evaluation, and Technology

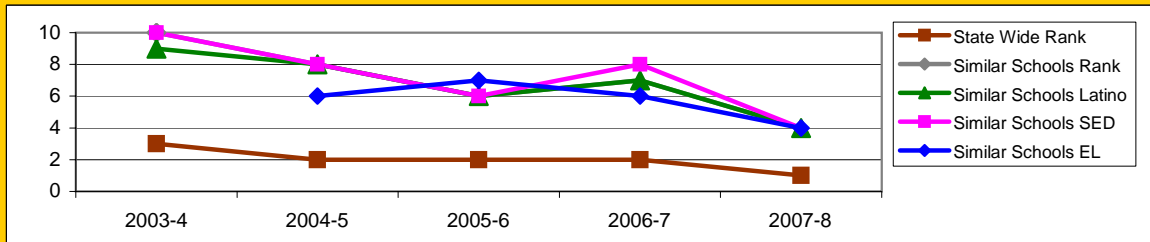
Board Focus Goals: McKinley Elementary (27) - September 2009

Demographics (K-6, 0809 Aeries)	Total	Female	Male	Latino	White	SED	English Learner	SpEd
Number	442	222	220	425	13	238	316	76
Percent of Total		50.2%	49.8%	96.2%	2.9%	53.8%	71.5%	17.2%



Achieve a State Similar School Ranking of 8 or Higher (scale = 1-10)

	State Wide Rank	Similar Schools Rank	Similar Schools Latino	Similar Schools White	Similar Schools SED	Similar Schools EL	Similar Schools Disab
2003-4	3	10	9	NA	10	NA	NA
2004-5	2	8	8	NA	8	6	NA
2005-6	2	6	6	NA	6	7	NA
2006-7	2	7	7	NA	8	6	NA
2007-8	1	4	4	NA	4	4	NA



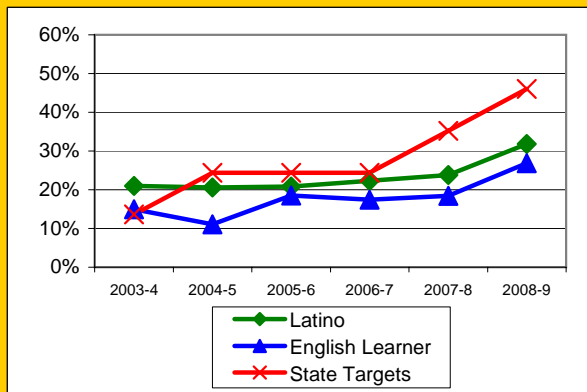
McKinley Continued

Exceed Federal Adequate Yearly Progress (AYP) Accountability Goals (*Blue* = Not enough students, *Bold/underline/italic* = Made by adjustment, *Red* = Did not pass

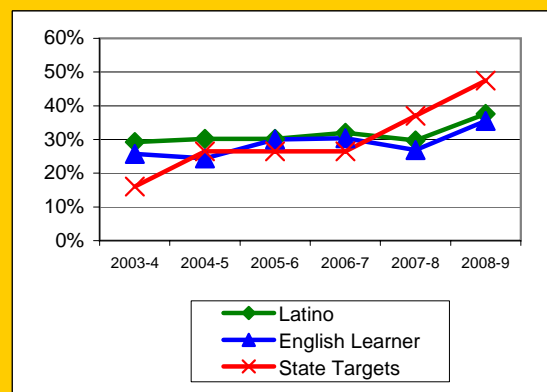
English Language Arts (ELA): Percent Proficient or Higher	State Targets	Schoolwide	Latino	White	Socio-Econ Disadv	English Learner	Stud with Disab	
2003-4	13.6%	22.8%	21.0%		22.8%	15.0%	5.3%	Mark 2
2004-5	24.4%	22.2%	20.6%		22.2%	11.1%	8.7%	PI Y1
2005-6	24.4%	22.6%	20.8%		22.6%	<u>18.5%</u>	0.0%	PI Y2
2006-7	24.4%	24.7%	22.3%		24.7%	17.4%	4.0%	PI Y3
2007-8	35.2%	25.7%	23.8%	72.7%	25.1%	18.4%	6.6%	PI Y4
2008-9	46.0%	<u>32.8%</u>	<u>31.8%</u>		<u>31.9%</u>	<u>26.9%</u>	9.6%	PI Y5
State Average 2-12, 2008-9		52.4%	39.2%	70.3%	38.6%	33.5%	30.7%	
2009-10	56.8%							PI Y5

Math: Percent Proficient or Higher	State Targets	Schoolwide	Latino	White	Socio-Econ Disadv	English Learner	Stud with Disab	
2003-4	16.0%	30.3%	29.2%		30.3%	25.7%	8.9%	Mark 2
2004-5	26.5%	31.9%	30.2%		31.9%	24.4%	13.0%	PI Y1
2005-6	26.5%	31.5%	30.2%		31.5%	30.0%	<u>8.0%</u>	PI Y2
2006-7	26.5%	34.1%	32.0%		34.1%	30.4%	20.0%	PI Y3
2007-8	37.0%	31.3%	29.7%	72.7%	30.8%	26.9%	<u>23.0%</u>	PI Y4
2008-9	47.5%	<u>38.4%</u>	<u>37.6%</u>		<u>37.7%</u>	<u>35.5%</u>	25.0%	PI Y5
State Average 2-12, 2008-9		54.5%	44.0%	67.7%	43.9%	43.0%	32.3%	
2009-10	58.0%							PI Y5

ELA

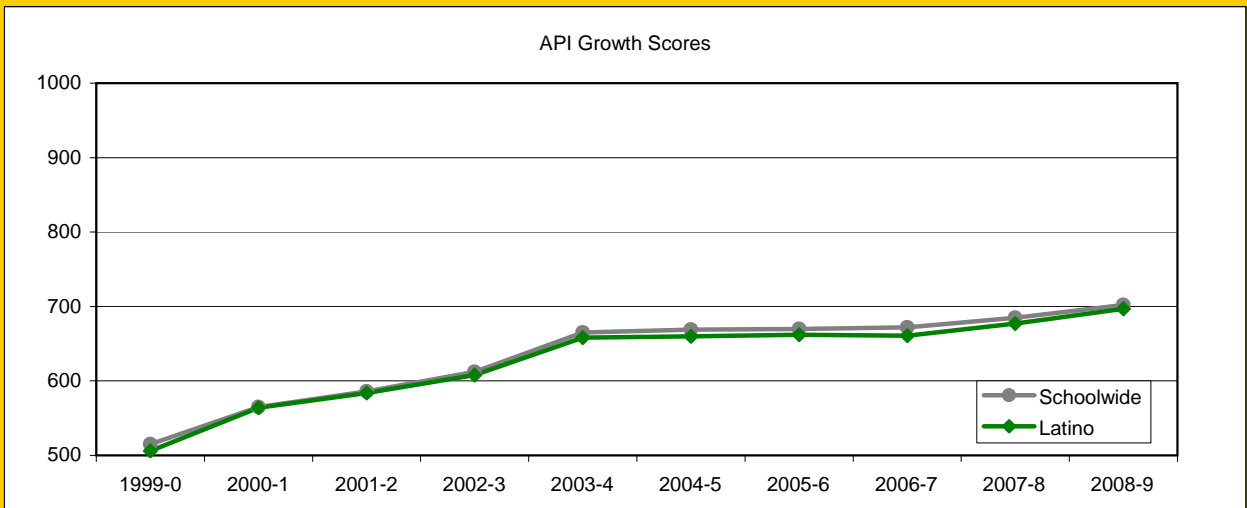


MATH



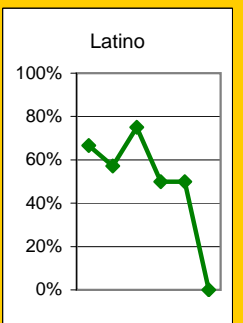
Exceed State Academic Performance Index (API) Growth Goals

	Schoolwide			Latino			White		
	Base	Growth/ Goal Met	STATE API (2-6)	Base	Growth/ Goal Met	STATE API (2-6)	Base	Growth/ Goal Met	STATE API (2-6)
2003-4	597	665 Met		594	658 Met				
2004-5	665	669 Not Met		658	660 Not Met				
2005-6	669	670 Not Met	751	660	662 Not Met	687			838
2006-7	668	672 Not Met	761	660	661 Not Met	702			840
2007-8	691	685 Not Met	776	680	677 Not Met	722			850
2008-9	674	702 Met	790	667	697 Met	738			862



Increase Participation Across Demographic Spectrum in Advanced Courses

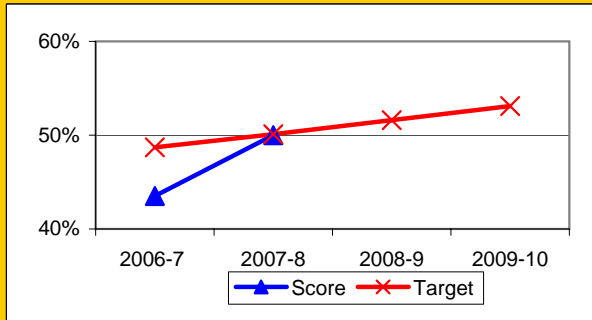
GATE (percent of all GATE students)	Latino		White		All Others	
	Number	Percent	Number	Percent	Number	Percent
2003-4	2	66.7%	0	0.0%	1	33.3%
2004-5	4	57.1%	2	28.6%	1	14.3%
2005-6	3	75.0%	1	25.0%	0	0.0%
2006-7	1	50.0%	1	50.0%	0	0.0%
2007-8	1	50.0%	1	50.0%	0	0.0%
2008-9	0	0.0%	0	0.0%	0	0.0%
2009-10						



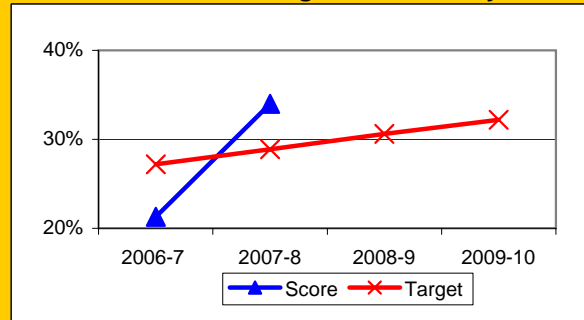
Progress on English Learners Gaining One Proficiency Level Annually and Attaining English Language Proficiency

	Gained one Level on CELDT		Gained English Proficiency		
	Target	Score	Target	Score	
2003-4	51.0%		30.0%		
2004-5	51.5%	54.0%	30.7%	34.1%	
2005-6	52.0%	55.5%	31.4%	34.5%	
2006-7	48.7%	43.5%	27.2%	21.3%	New Norms
2007-8	50.1%	50.0%	28.9%	34.0%	
2008-9	51.6%		30.6%		
2009-10	53.1%		32.2%		

Gained One Level On CELDT

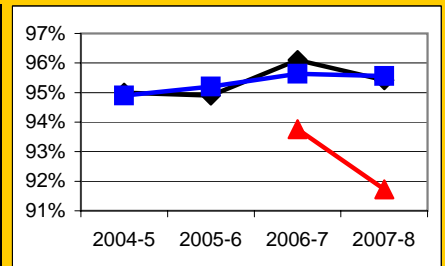


Attained English Proficiency



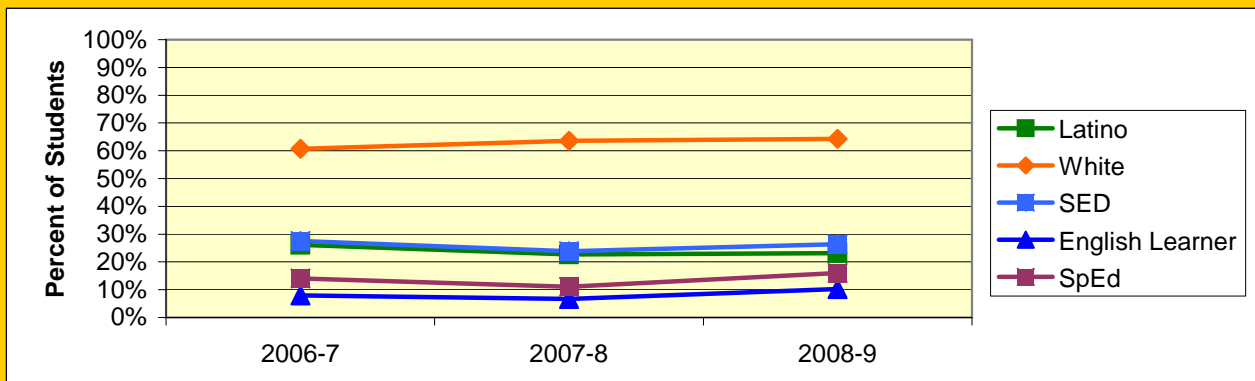
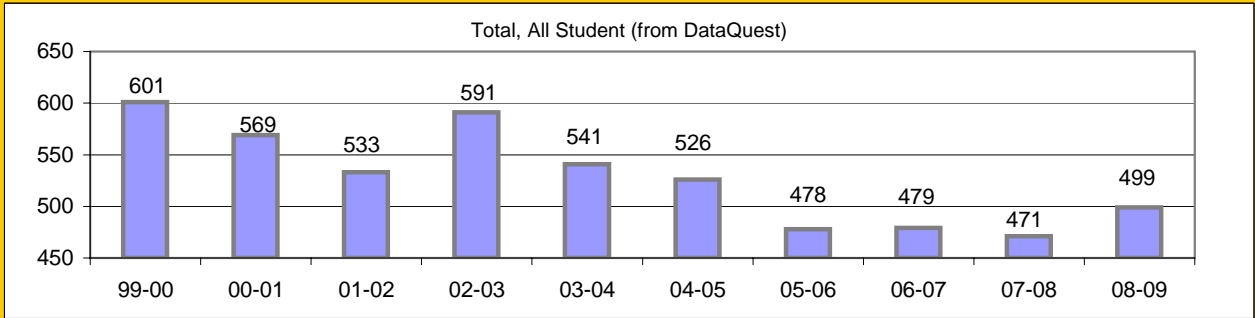
Increase Efforts to Enhance Revenue

Attendance (Percent over year)	Lowest Month	Whole Year	District
2004-5		95.0%	94.9%
2005-6		94.9%	95.2%
2006-7	93.8%	96.1%	95.6%
2007-8	91.7%	95.4%	95.6%
2008-9			



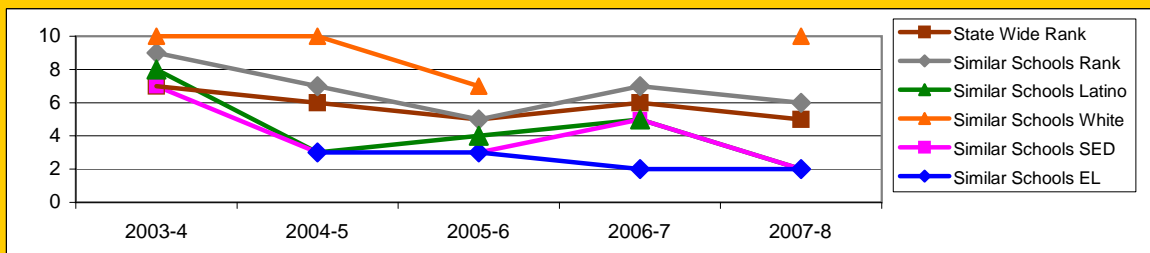
Board Focus Goals: Monroe Elementary (28) - September 2009

Demographics (K-6, 0809 Aeries)	Total	Female	Male	Latino	White	SED	English Learner	SpEd
Number	498	232	266	347	127	277	198	66
Percent of Total		46.6%	53.4%	69.7%	25.5%	55.6%	39.8%	13.3%



Achieve a State Similar School Ranking of 8 or Higher (scale = 1-10)

	State Wide Rank	Similar Schools Rank	Similar Schools Latino	Similar Schools White	Similar Schools SED	Similar Schools EL	Similar Schools Disab
2003-4	7	9	8	10	7	NA	NA
2004-5	6	7	3	10	3	3	NA
2005-6	5	5	4	7	3	3	NA
2006-7	6	7	5	NA	5	2	NA
2007-8	5	6	2	10	2	2	NA



Exceed Federal Adequate Yearly Progress (AYP) Accountability Goals (*Blue* = Not enough students, *Bold/underline/italic* = Made by adjustment, *Red* = Did not pass)

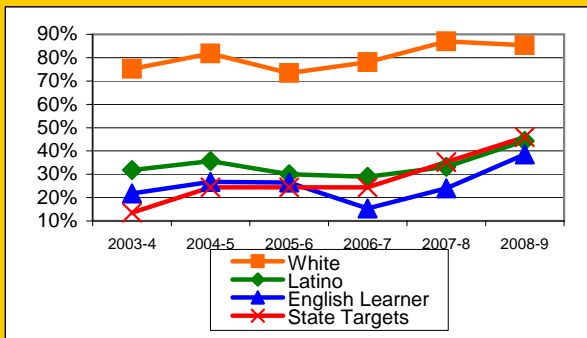
English Language Arts (ELA): Percent Proficient or Higher	State Targets	Schoolwide	Latino	White	Socio-Econ Disadv	English Learner	Stud with Disab
2003-4	13.6%	44.8%	31.8%	75.2%	27.2%	21.8%	23.4%
2004-5	24.4%	48.1%	35.6%	81.7%	31.1%	26.7%	19.6%
2005-6	24.4%	41.6%	30.0%	73.4%	27.7%	26.5%	8.8%
2006-7	24.4%	42.1%	29.0%	78.1%	26.7%	15.3%	0.0%
2007-8	35.2%	47.4%	<u>33.2%</u>	87.0%	<u>31.6%</u>	<u>24.0%</u>	15.4%
2008-9	46.0%	56.3%	<u>44.3%</u>	85.4%	<u>40.9%</u>	<u>38.6%</u>	38.5%
State Average 2-12, 2008-9		52.4%	39.2%	70.3%	38.6%	33.5%	30.7%
2009-10	56.8%						

1 Mark

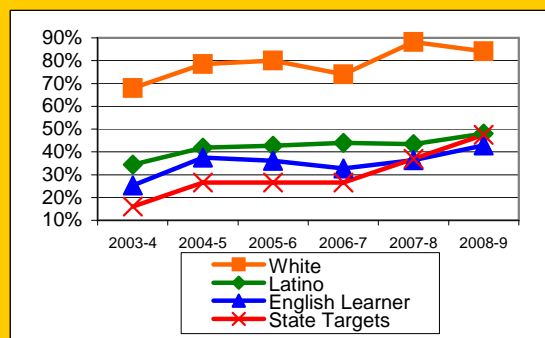
Math: Percent Proficient or Higher	State Targets	Schoolwide	Latino	White	Socio-Econ Disadv	English Learner	Stud with Disab
2003-4	16.0%	44.1%	34.4%	68.0%	30.0%	25.3%	19.1%
2004-5	26.5%	51.1%	41.8%	78.5%	36.4%	37.5%	21.7%
2005-6	26.5%	52.0%	42.7%	80.0%	38.8%	36.1%	17.6%
2006-7	26.5%	52.4%	43.9%	74.0%	39.8%	32.8%	3.6%
2007-8	37.0%	54.3%	43.4%	88.2%	42.2%	<u>36.4%</u>	23.1%
2008-9	47.5%	58.7%	48.1%	84.1%	42.9%	<u>42.9%</u>	35.9%
State Average 2-12, 2008-9		54.5%	44.0%	67.7%	43.9%	43.0%	32.3%
2009-10	58.0%						

1 Mark

ELA

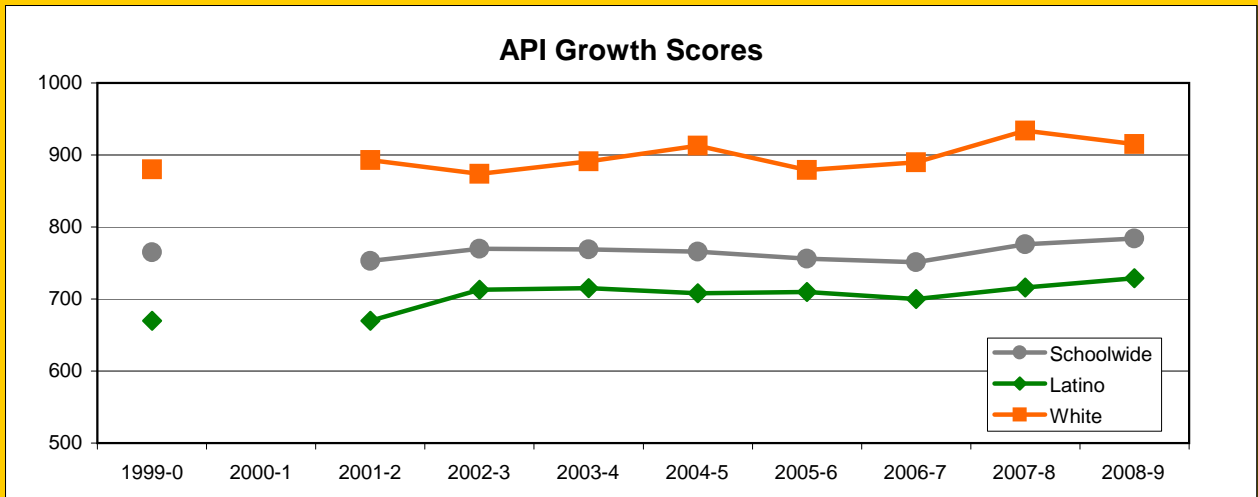


MATH



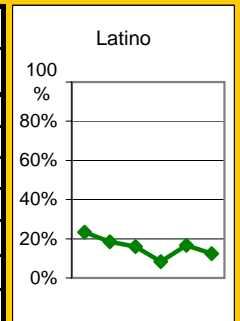
Exceed State Academic Performance Index (API) Growth Goals

	Schoolwide			Latino			White		
	Base	Growth/ Goal Met	STATE API (2-6)	Base	Growth/ Goal Met	STATE API (2-6)	Base	Growth/ Goal Met	STATE API (2-6)
2003-4	766	769 Met		707	715 Met		874	891 Met	
2004-5	763	766 Met		712	708 Not Met		881	913 Met	
2005-6	766	756 Not Met	751	708	710 Met	687	913	879 Met	838
2006-7	753	751 Not Met	761	707	700 Not Met	702	877	890 Met	840
2007-8	768	776 Met	776	721	716 Not Met	722	892	934 Met	850
2008-9	764	784 Met	790	707	729 Met	738	927	915 Met	862



Increase Participation Across Demographic Spectrum in Advanced Courses

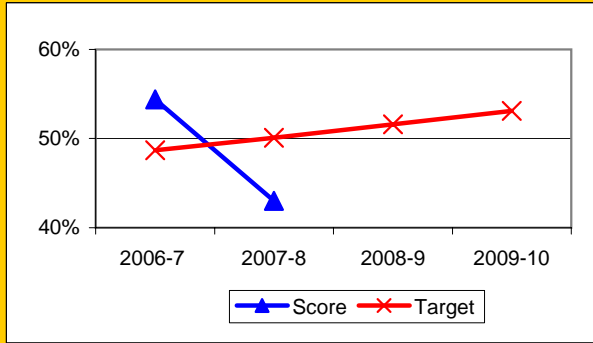
GATE (percent of all GATE students)	Latino		White		All Others	
	Number	Percent	Number	Percent	Number	Percent
2003-4	11	23.4%	30	63.8%	6	12.8%
2004-5	7	18.4%	27	71.1%	4	10.5%
2005-6	4	16.0%	17	68.0%	4	16.0%
2006-7	1	8.3%	10	83.3%	1	8.3%
2007-8	2	16.7%	9	75.0%	1	8.3%
2008-9	1	12.5%	6	75.0%	1	12.5%
2009-10						



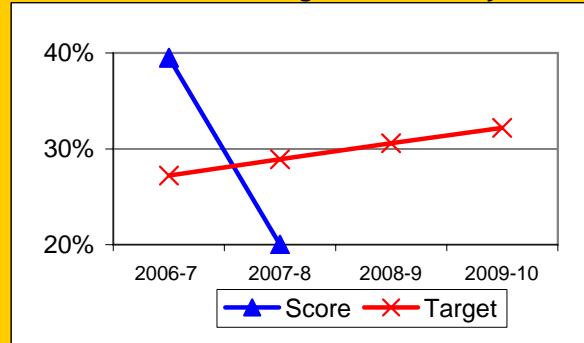
Progress on English Learners Gaining One Proficiency Level Annually and Attaining English Language Proficiency

	Gained one Level on CELDT		Gained English Proficiency		
	Target	Score	Target	Score	
2003-4	51.0%		30.0%		
2004-5	51.5%	62.2%	30.7%	45.3%	
2005-6	52.0%	46.4%	31.4%	28.4%	
2006-7	48.7%	54.4%	27.2%	39.5%	New Norms
2007-8	50.1%	43.0%	28.9%	20.0%	
2008-9	51.6%		30.6%		
2009-10	53.1%		32.2%		

Gained One Level On CELDT

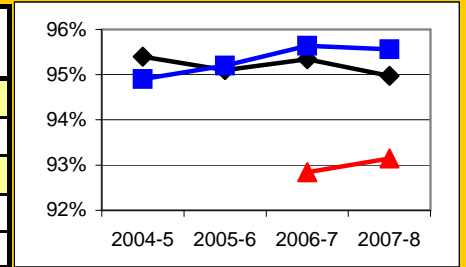


Attained English Proficiency



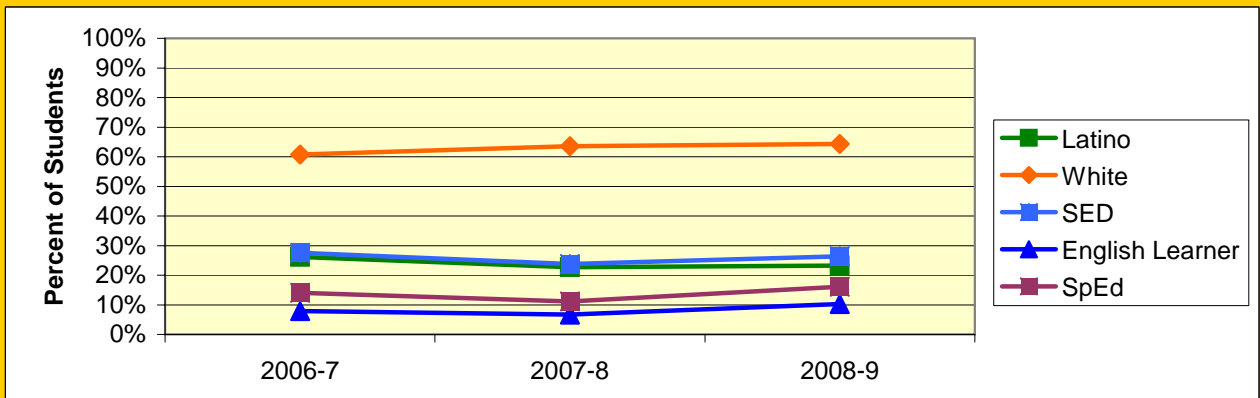
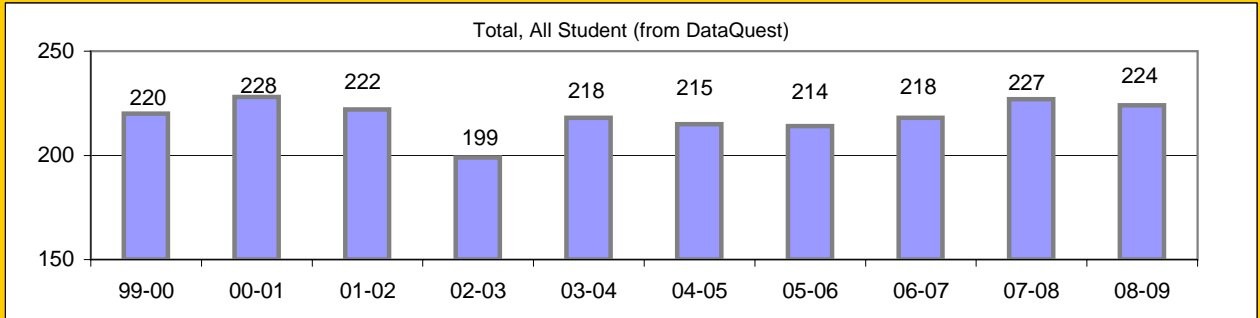
Increase Efforts to Enhance Revenue

Attendance (Percent over year)	Lowest Month	Whole Year	District
2004-5		95.4%	94.9%
2005-6		95.1%	95.2%
2006-7	92.8%	95.3%	95.6%
2007-8	93.2%	95.0%	95.6%
2008-9			



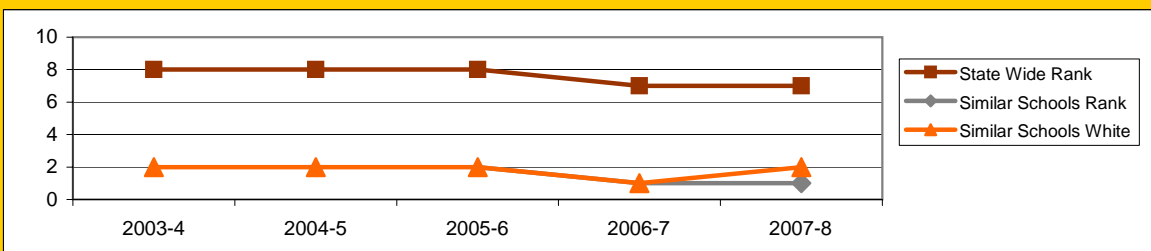
Board Focus Goals: Open Alternative Elementary (25) - Sept. 2009

Demographics (K-6, 0809 Aeries)	Total	Female	Male	Latino	White	SED	English Learner	SpEd
Number	224	106	118	52	144	59	23	36
Percent of Total		47.3%	52.7%	23.2%	64.3%	26.3%	10.3%	16.1%



Achieve a State Similar School Ranking of 8 or Higher (scale = 1-10)

	State Wide Rank	Similar Schools Rank	Similar Schools Latino	Similar Schools White	Similar Schools SED	Similar Schools EL	Similar Schools Disab
2003-4	8	2	NA	2	NA	NA	NA
2004-5	8	2	NA	2	NA	NA	NA
2005-6	8	2	NA	2	NA	NA	NA
2006-7	7	1	NA	1	NA	NA	NA
2007-8	7	1	NA	2	NA	NA	NA



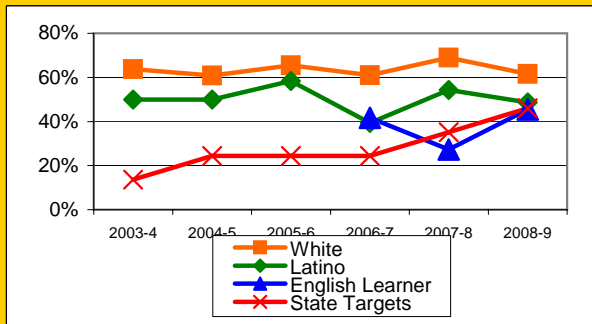
Open Alternative Continued

Exceed Federal Adequate Yearly Progress (AYP) Accountability Goals (Blue = Not enough students, Bold/underline/italic = Made by adjustment, Red = Did not pass

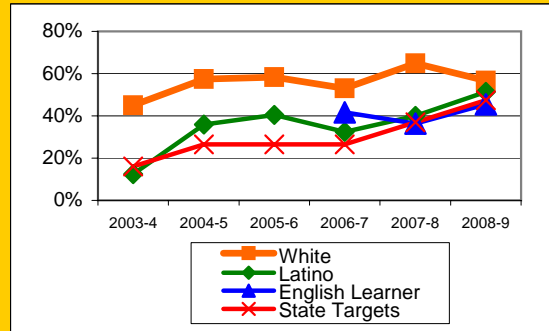
English Language Arts (ELA): Percent Proficient or Higher	State Targets	Schoolwide	Latino	White	Socio-Econ Disadv	English Learner	Stud with Disab
2003-4	13.6%	58.6%	50.0%	63.7%	45.1%		35.2%
2004-5	24.4%	58.3%	50.0%	60.8%	50.0%		25.0%
2005-6	24.4%	65.7%	58.3%	65.5%	48.6%		56.3%
2006-7	24.4%	58.0%	39.4%	61.0%	54.1%	41.7%	46.2%
2007-8	35.2%	64.8%	54.3%	69.0%	45.9%	27.3%	50.0%
2008-9	46.0%	60.9%	48.6%	61.5%	51.2%	45.5%	61.9%
State Average 2-12, 2008-9		52.4%	39.2%	70.3%	38.6%	33.5%	30.7%
2009-10	56.8%						

Math: Percent Proficient or Higher	State Targets	Schoolwide	Latino	White	Socio-Econ Disadv	English Learner	Stud with Disab
2003-4	16.0%	36.8%	12.5%	45.0%	25.8%		11.7%
2004-5	26.5%	53.0%	35.9%	57.5%	28.6%		14.3%
2005-6	26.5%	56.8%	40.5%	58.3%	45.9%		41.2%
2006-7	26.5%	47.8%	32.4%	53.0%	40.5%	41.7%	29.4%
2007-8	37.0%	58.0%	40.0%	64.8%	48.6%	36.4%	40.9%
2008-9	47.5%	57.1%	51.4%	56.7%	37.2%	45.5%	61.9%
State Average 2-12, 2008-9		54.5%	44.0%	67.7%	43.9%	43.0%	32.3%
2009-10	58.0%						

ELA

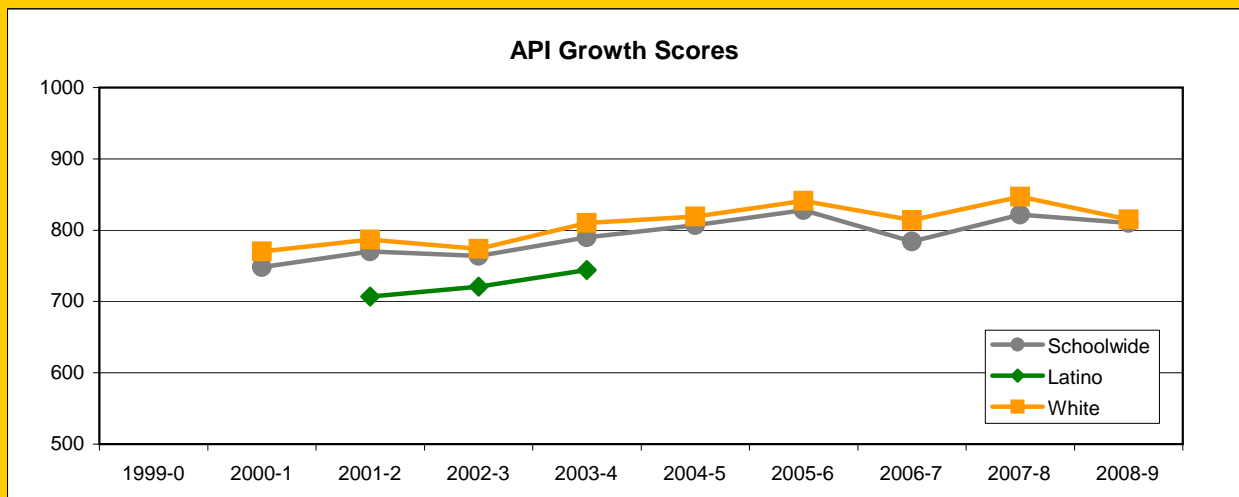


MATH



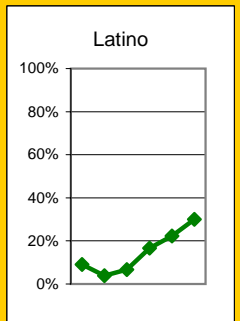
Exceed State Academic Performance Index (API) Growth Goals

	Schoolwide			Latino			White		
	Base	Growth/ Goal Met	STATE API (2-6)	Base	Growth/ Goal Met	STATE API (2-6)	Base	Growth/ Goal Met	STATE API (2-6)
2003-4	753	790 Met		703	744 Met		764	810 Met	
2004-5	788	807 Met					807	819 Met	
2005-6	807	828 Met	751			687	819	841 Met	838
2006-7	824	784 Not Met	761			702	837	814 Met	840
2007-8	800	822 Met	776			722	823	847 Met	850
2008-9	819	810 Met	790			738	848	815 Met	862



Increase Participation Across Demographic Spectrum in Advanced Courses

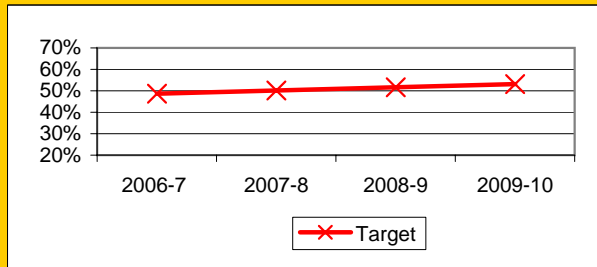
GATE (percent of all GATE students)	Latino		White		All Others	
	Number	Percent	Number	Percent	Number	Percent
2003-4	1	9.1%	4	36.4%	6	54.5%
2004-5	1	3.8%	11	42.3%	14	53.8%
2005-6	1	6.7%	10	66.7%	4	26.7%
2006-7	2	16.7%	8	66.7%	2	16.7%
2007-8	2	22.2%	5	55.6%	2	22.2%
2008-9	3	30.0%	5	50.0%	2	20.0%
2009-10						



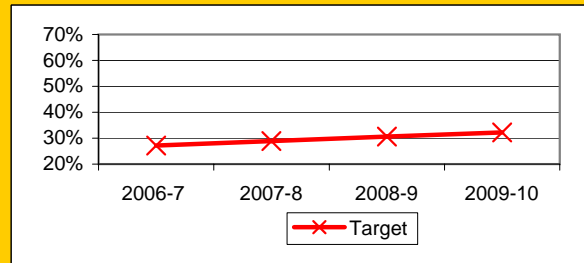
Progress on English Learners Gaining One Proficiency Level Annually and Attaining English Language Proficiency

	Gained one Level on CELDT		Gained English Proficiency		
	Target	Score	Target	Score	
2003-4	51.0%		30.0%		
2004-5	51.5%		30.7%		
2005-6	52.0%		31.4%		
2006-7	48.7%		27.2%		New Norms
2007-8	50.1%		28.9%		
2008-9	51.6%		30.6%		
2009-10	53.1%		32.2%		

Gained One Level On CELDT

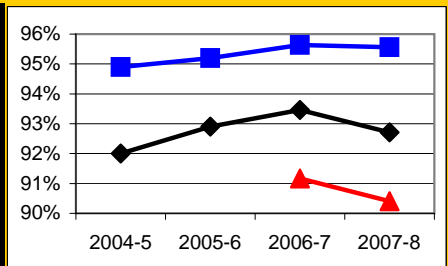


Attained English Proficiency



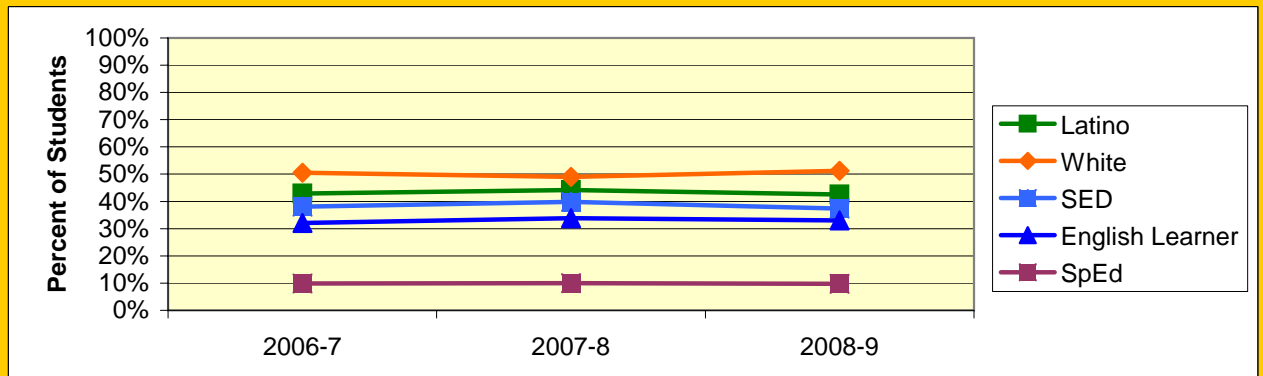
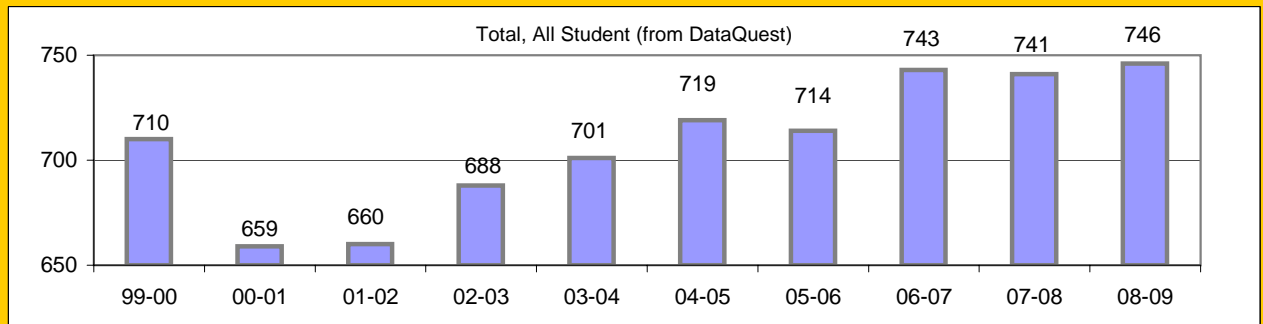
Increase Efforts to Enhance Revenue

Attendance (Percent over year)	Lowest Month	Whole Year	District
2004-5		92.0%	94.9%
2005-6		92.9%	95.2%
2006-7	91.2%	93.5%	95.6%
2007-8	90.4%	92.7%	95.6%
2008-9			



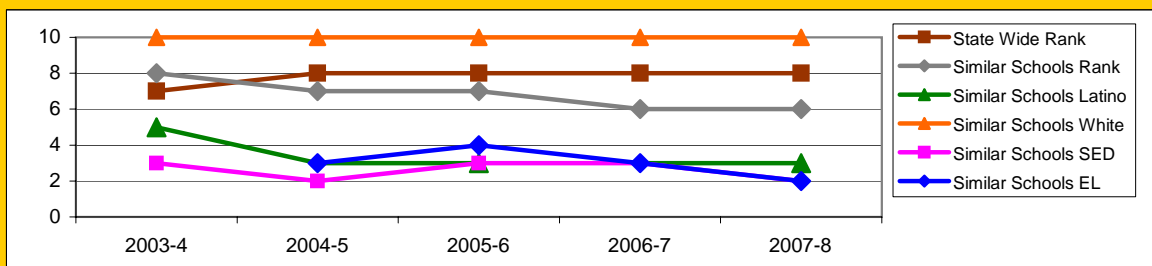
Board Focus Goals: Peabody Elementary (29) - September 2009

Demographics (K-6, 0809 Aeries)	Total	Female	Male	Latino	White	SED	English Learner	SpEd
Number	741	358	383	315	380	277	245	72
Percent of Total		48.3%	51.7%	42.5%	51.3%	37.4%	33.1%	9.7%



Achieve a State Similar School Ranking of 8 or Higher (scale = 1-10)

	State Wide Rank	Similar Schools Rank	Similar Schools Latino	Similar Schools White	Similar Schools SED	Similar Schools EL	Similar Schools Disab
2003-4	7	8	5	10	3	NA	NA
2004-5	8	7	3	10	2	3	NA
2005-6	8	7	3	10	3	4	NA
2006-7	8	6	3	10	3	3	NA
2007-8	8	6	3	10	2	2	NA

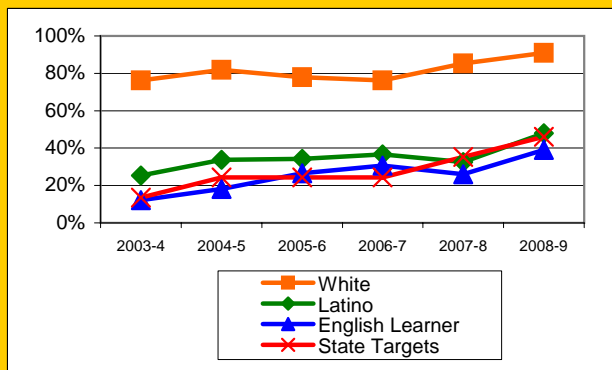


Exceed Federal Adequate Yearly Progress (AYP) Accountability Goals (Blue = Not enough students, Bold/underline/italic = Made by adjustment, Red = Did not pass

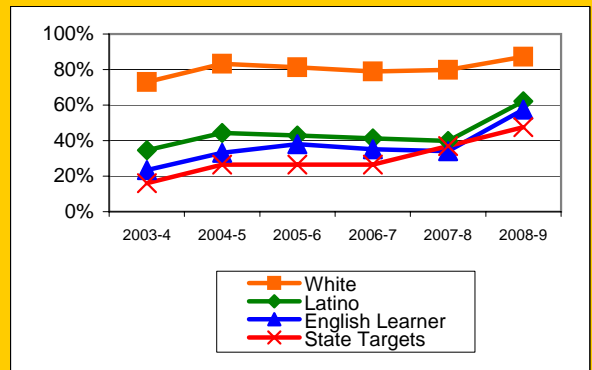
English Language Arts (ELA): Percent Proficient or Higher	State Targets	Schoolwide	Latino	White	Socio-Econ Disadv	English Learner	Stud with Disab	
2003-4	13.6%	48.6%	25.4%	76.2%	19.4%	12.2%	2.6%	
2004-5	24.4%	56.9%	33.7%	81.9%	25.9%	<u>18.2%</u>	15.0%	
2005-6	24.4%	56.9%	34.3%	77.9%	31.5%	26.5%	26.1%	
2006-7	24.4%	58.5%	36.6%	76.2%	33.5%	30.7%	21.3%	
2007-8	35.2%	60.4%	32.6%	85.3%	32.1%	26.1%	38.0%	1 Mark
2008-9	46.0%	71.8%	48.0%	91.0%	47.7%	<u>39.1%</u>	37.3%	
State Average 2-12, 2008-9		52.4%	39.2%	70.3%	38.6%	33.5%	30.7%	
2009-10	56.8%							

Math: Percent Proficient or Higher	State Targets	Schoolwide	Latino	White	Socio-Econ Disadv	English Learner	Stud with Disab	
2003-4	16.0%	52.4%	34.6%	73.0%	28.0%	23.5%	5.5%	
2004-5	26.5%	63.0%	44.3%	83.2%	37.8%	33.1%	30.8%	
2005-6	26.5%	62.6%	42.9%	81.3%	39.0%	38.1%	34.8%	
2006-7	26.5%	61.7%	41.3%	78.9%	38.2%	35.2%	23.4%	
2007-8	37.0%	61.6%	39.8%	79.9%	39.1%	34.1%	28.0%	1 Mark
2008-9	47.5%	75.5%	62.2%	87.2%	59.8%	57.5%	50.0%	
State Average 2-12, 2008-9		54.5%	44.0%	67.7%	43.9%	43.0%	32.3%	
2009-10	58.0%							

ELA

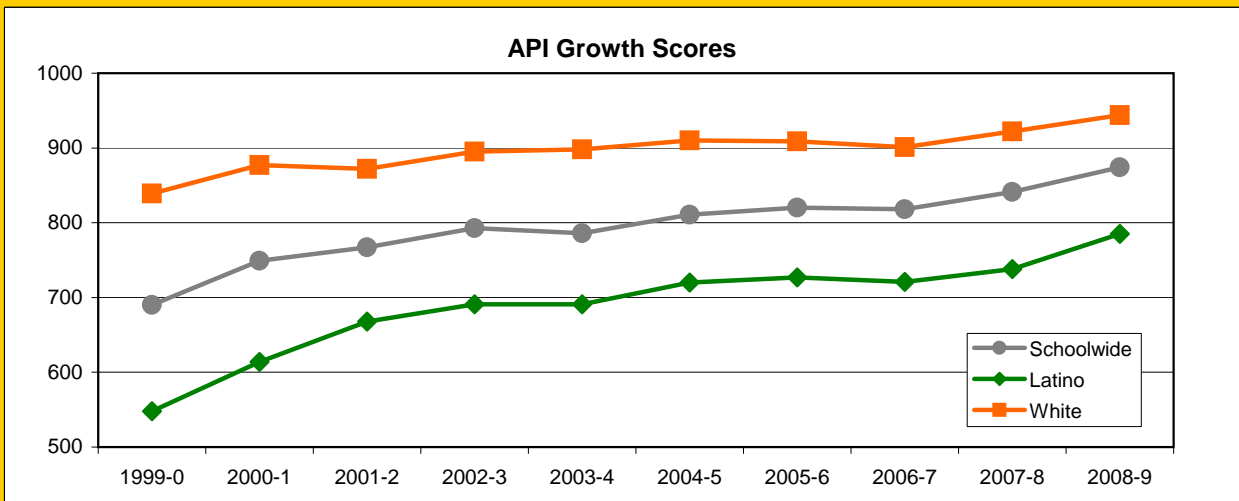


MATH



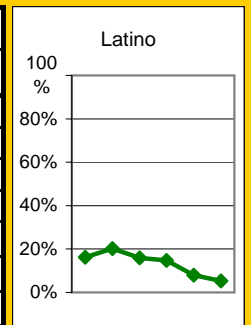
Exceed State Academic Performance Index (API) Growth Goals

	Schoolwide			Latino			White		
	Base	Growth/ Goal Met	STATE API (2-6)	Base	Growth/ Goal Met	STATE API (2-6)	Base	Growth/ Goal Met	STATE API (2-6)
2003-4	794	786 Not Met		694	691 Not Met		896	898 Met	
2004-5	783	811 Met		691	720 Met		889	910 Met	
2005-6	811	820 Met	751	720	727 Met	687	910	909 Met	838
2006-7	819	818 Met	761	725	721 Not Met	702	907	901 Met	840
2007-8	827	841 Met	776	734	738 Not Met	722	901	922 Met	850
2008-9	833	874 Met	790	732	785 Met	738	919	944 Met	862



Increase Participation Across Demographic Spectrum in Advanced Courses

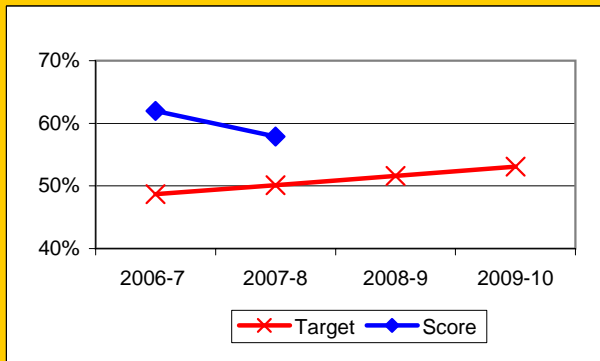
GATE (percent of all GATE students)	Latino		White		All Others	
	Number	Percent	Number	Percent	Number	Percent
2003-4	11	16.2%	54	79.4%	3	4.4%
2004-5	16	20.3%	61	77.2%	2	2.5%
2005-6	10	15.9%	53	84.1%	0	0.0%
2006-7	10	14.7%	56	82.4%	2	2.9%
2007-8	6	7.9%	67	88.2%	3	3.9%
2008-9	3	5.3%	51	89.5%	3	5.3%
2009-10						



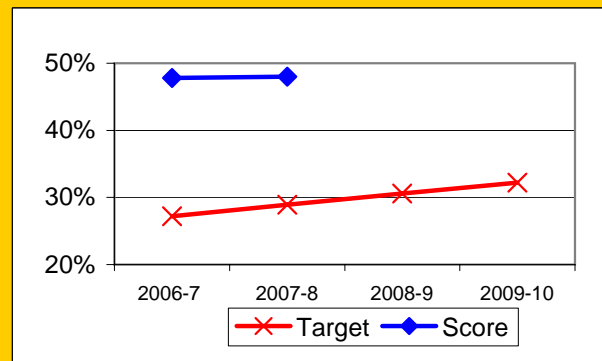
Progress on English Learners Gaining One Proficiency Level Annually and Attaining English Language Proficiency

	Gained one Level on CELDT		Gained English Proficiency		
	Target	Score	Target	Score	
2003-4	51.0%		30.0%		
2004-5	51.5%	53.5%	30.7%	26.5%	
2005-6	52.0%	65.2%	31.4%	46.5%	
2006-7	48.7%	62.0%	27.2%	47.8%	New Norms
2007-8	50.1%	57.9%	28.9%	48.0%	
2008-9	51.6%		30.6%		
2009-10	53.1%		32.2%		

Gained One Level On CELDT

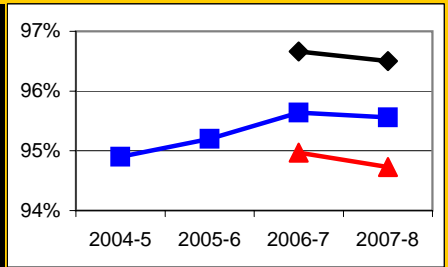


Attained English Proficiency



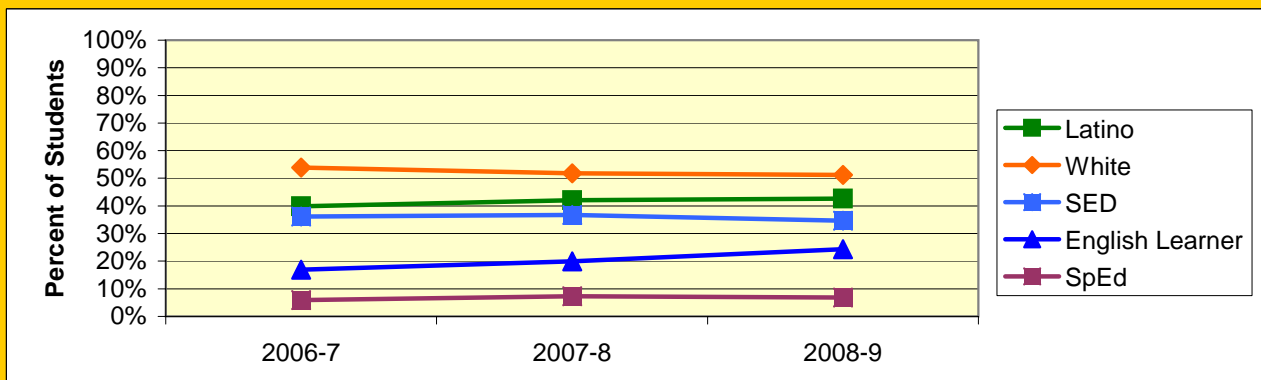
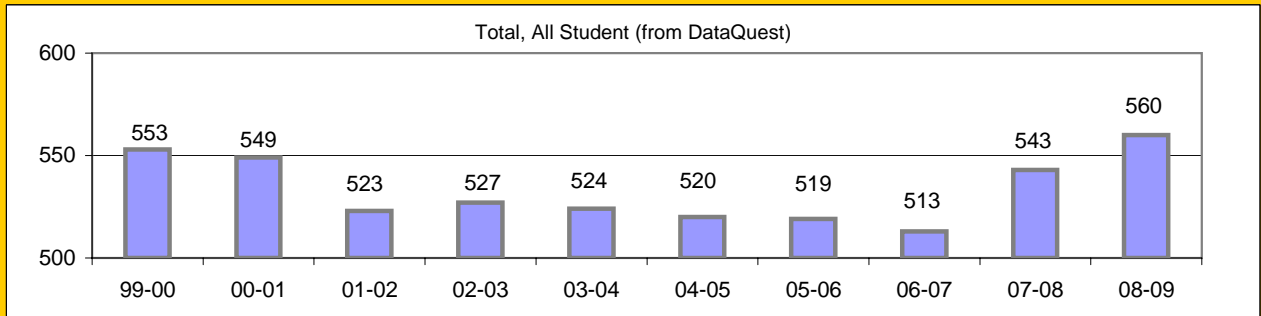
Increase Efforts to Enhance Revenue

Attendance (Percent over year)	Lowest Month	Whole Year	District
2004-5			94.9%
2005-6			95.2%
2006-7	95.0%	96.7%	95.6%
2007-8	94.7%	96.5%	95.6%
2008-9			



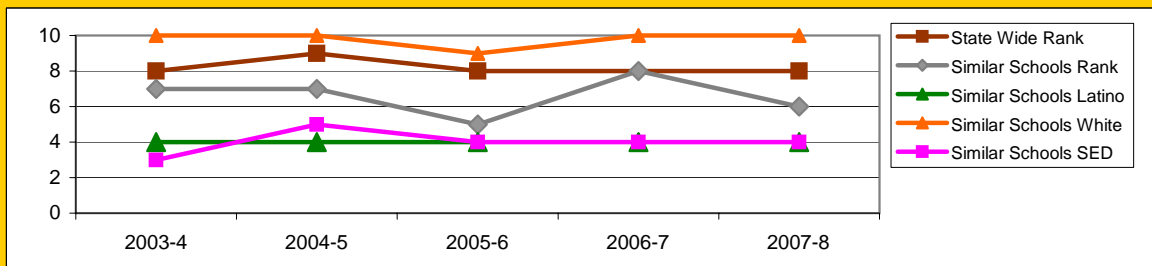
Board Focus Goals: Roosevelt Elementary (30) - September 2009

Demographics (K-6, 0809 Aeries)	Total	Female	Male	Latino	White	SED	English Learner	SpEd
Number	554	270	284	236	284	192	135	38
Percent of Total		48.7%	51.3%	42.6%	51.3%	34.7%	24.4%	6.9%



Achieve a State Similar School Ranking of 8 or Higher (scale = 1-10)

	State Wide Rank	Similar Schools Rank	Similar Schools Latino	Similar Schools White	Similar Schools SED	Similar Schools EL	Similar Schools Disab
2003-4	8	7	4	10	3	NA	NA
2004-5	9	7	4	10	5	NA	NA
2005-6	8	5	4	9	4	NA	NA
2006-7	8	8	4	10	4	NA	NA
2007-8	8	6	4	10	4	NA	NA



Exceed Federal Adequate Yearly Progress (AYP) Accountability Goals (Blue = Not enough students, Bold/underline/italic = Made by adjustment, Red = Did not pass

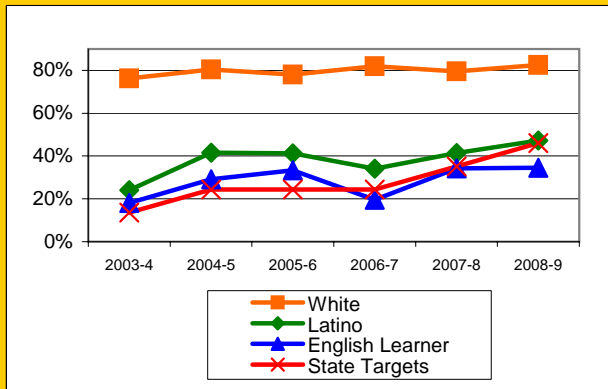
English Language Arts (ELA): Percent Proficient or Higher	State Targets	Schoolwide	Latino	White	Socio-Econ Disadv	English Learner	Stud with Disab
2003-4	13.6%	56.2%	24.0%	76.3%	25.6%	18.1%	19.3%
2004-5	24.4%	65.0%	41.5%	80.4%	42.1%	29.1%	20.7%
2005-6	24.4%	60.7%	41.2%	78.1%	36.7%	33.3%	25.9%
2006-7	24.4%	60.3%	34.1%	81.9%	28.3%	19.6%	14.8%
2007-8	35.2%	61.1%	41.4%	79.5%	42.1%	<u>34.3%</u>	35.5%
2008-9	46.0%	65.4%	47.3%	82.5%	<u>45.2%</u>	34.5%	38.5%
State Average 2-12, 2008-9		52.4%	39.2%	70.3%	38.6%	33.5%	30.7%
2009-10	56.8%						

1 Mark

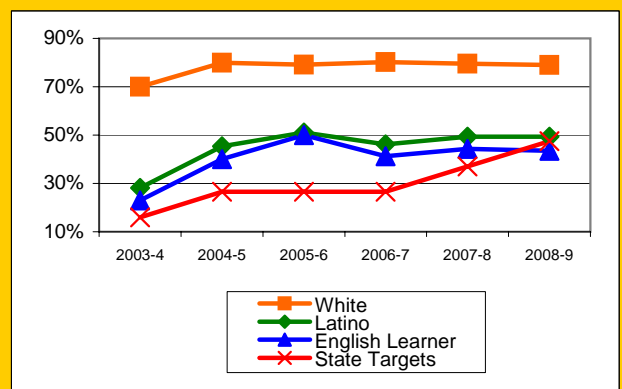
Math: Percent Proficient or Higher	State Targets	Schoolwide	Latino	White	Socio-Econ Disadv	English Learner	Stud with Disab
2003-4	16.0%	53.7%	28.2%	70.0%	26.7%	23.0%	22.5%
2004-5	26.5%	66.4%	45.4%	79.9%	47.9%	40.0%	27.6%
2005-6	26.5%	66.7%	51.1%	79.2%	45.3%	50.0%	25.9%
2006-7	26.5%	65.7%	46.1%	80.2%	40.2%	41.3%	25.9%
2007-8	37.0%	64.9%	49.3%	79.5%	47.9%	44.3%	51.6%
2008-9	47.5%	65.1%	49.4%	79.0%	49.0%	43.5%	40.0%
State Average 2-12, 2008-9		54.5%	44.0%	67.7%	43.9%	43.0%	32.3%
2009-10	58.0%						

1 Mark

ELA

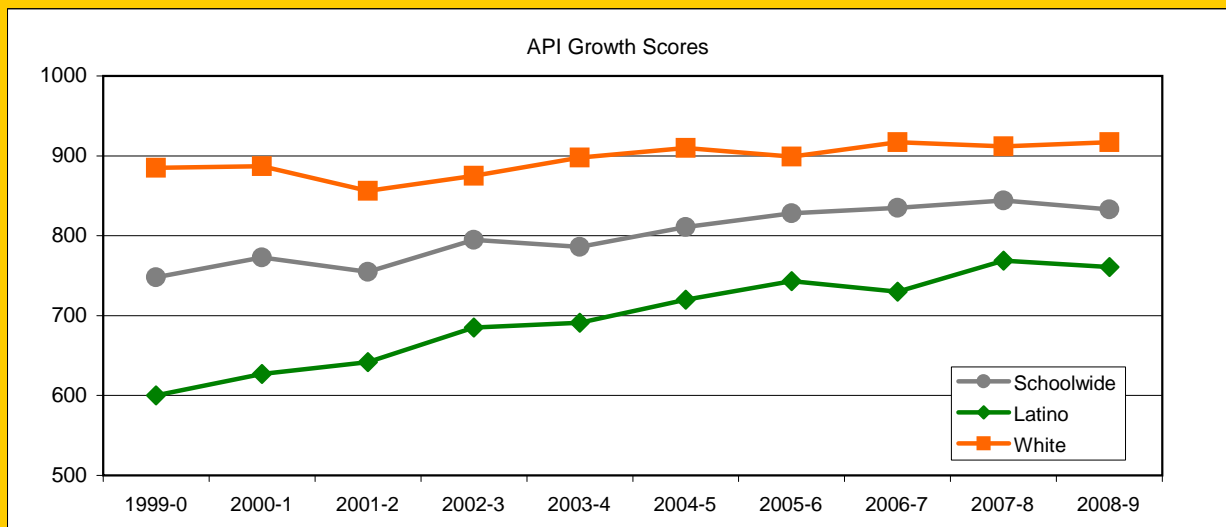


MATH



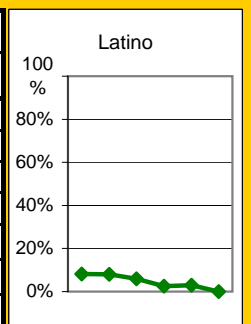
Exceed State Academic Performance Index (API) Growth Goals

	Schoolwide			Latino			White		
	Base	Growth/ Goal Met	STATE API (2-6)	Base	Growth/ Goal Met	STATE API (2-6)	Base	Growth/ Goal Met	STATE API (2-6)
2003-4	794	786 Not Met		694	691 Not Met		896	898 Met	
2004-5	783	811 Met		691	720 Met		889	910 Met	
2005-6	811	8828 Met	751	720	743 Met	687	910	899 Met	838
2006-7	819	835 Met	761	725	730 Not Met	702	907	917 Met	840
2007-8	846	844 Met	776	750	769 Met	722	920	912 Met	850
2008-9	837	833 Met	790	761	740 Not Met	738	910	917 Met	862



Increase Participation Across Demographic Spectrum in Advanced Courses

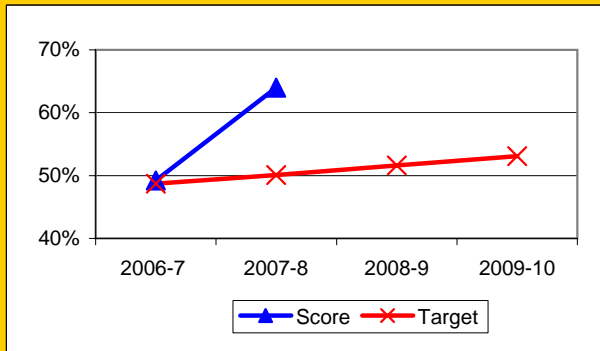
GATE (percent of all GATE students)	Latino		White		All Others	
	Number	Percent	Number	Percent	Number	Percent
2003-4	6	8.1%	63	85.1%	5	6.8%
2004-5	5	8.1%	54	87.1%	3	4.8%
2005-6	3	6.0%	43	86.0%	4	8.0%
2006-7	1	2.6%	36	92.3%	2	5.1%
2007-8	1	3.0%	31	93.9%	1	3.0%
2008-9	0	0.0%	19	100.0%	0	0.0%
2009-10						



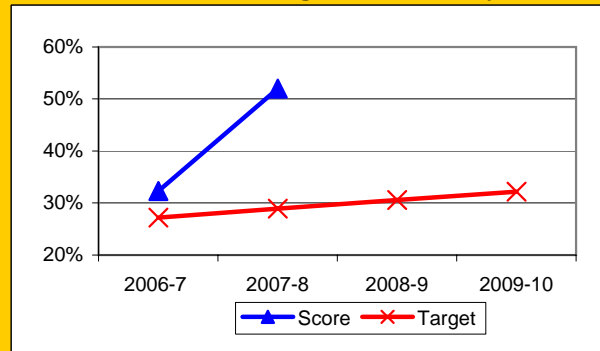
Progress on English Learners Gaining One Proficiency Level Annually and Attaining English Language Proficiency

	Gained one Level on CELDT		Gained English Proficiency		
	Target	Score	Target	Score	
2003-4	51.0%		30.0%		
2004-5	51.5%	83.6%	30.7%	59.3%	
2005-6	52.0%	55.1%	31.4%		
2006-7	48.7%	49.2%	27.2%	32.3%	New Norms
2007-8	50.1%	64.0%	28.9%	52.0%	
2008-9	51.6%		30.6%		
2009-10	53.1%		32.2%		

Gained One Level On CELDT

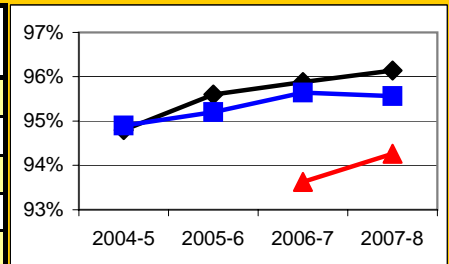


Attained English Proficiency



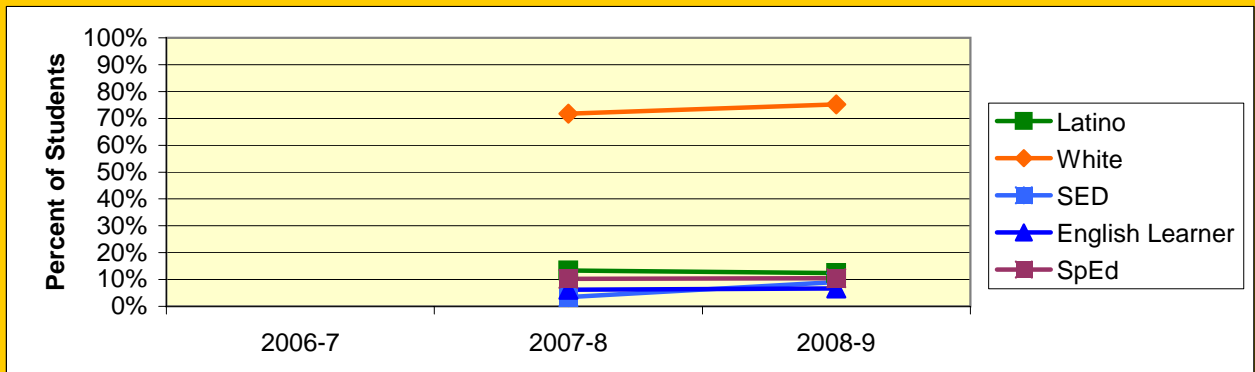
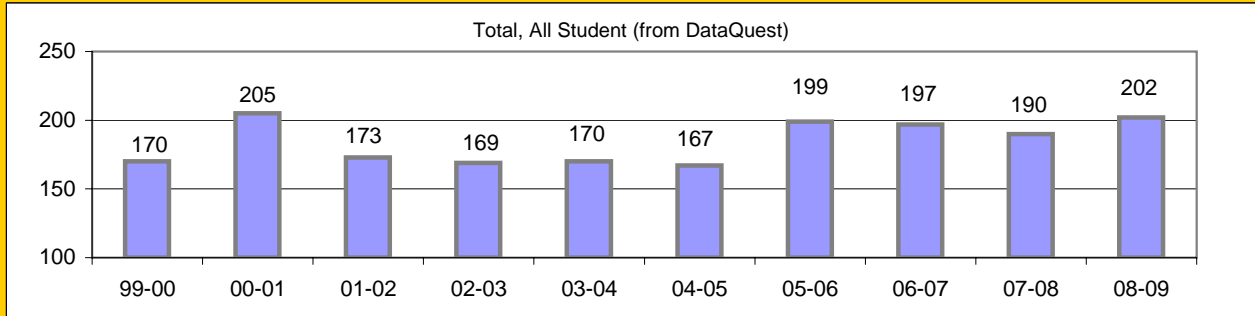
Increase Efforts to Enhance Revenue

Attendance (Percent over year)	Lowest Month	Whole Year	District
2004-5		94.8%	94.9%
2005-6		95.6%	95.2%
2006-7	93.6%	95.9%	95.6%
2007-8	94.3%	96.1%	95.6%
2008-9			



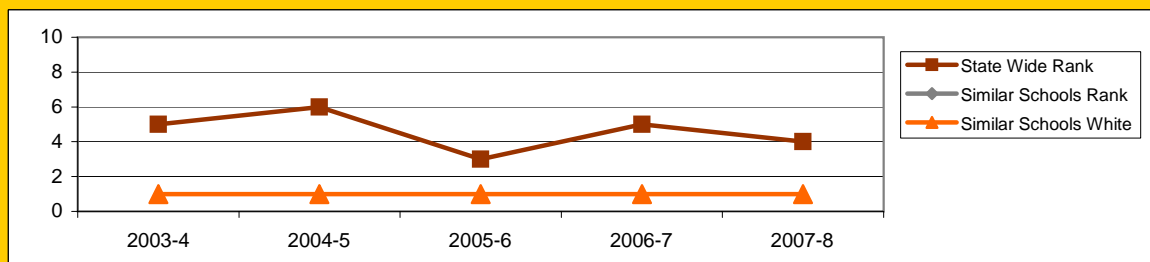
Board Focus Goals: S B Charter (33) - September 2009

Demographics (K-6, 0809 Aeries)	Total	Female	Male	Latino	White	SED	English Learner	SpEd
Number	210	104	106	26	158	19	14	22
Percent of Total		49.5%	50.5%	12.4%	75.2%	9.0%	6.7%	10.5%



Achieve a State Similar School Ranking of 8 or Higher (scale = 1-10)

	State Wide Rank	Similar Schools Rank	Similar Schools Latino	Similar Schools White	Similar Schools SED	Similar Schools EL	Similar Schools Disab
2003-4	5	1	NA	1	NA	NA	NA
2004-5	6	1	NA	1	NA	NA	NA
2005-6	3	1	NA	1	NA	NA	NA
2006-7	5	1	NA	1	NA	NA	NA
2007-8	4	1	NA	1	NA	NA	NA

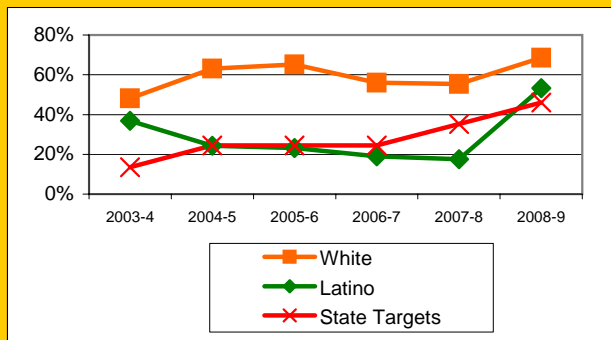


Exceed Federal Adequate Yearly Progress (AYP) Accountability Goals (Blue = Not enough students, Bold/underline/italic = Made by adjustment, Red = Did not pass

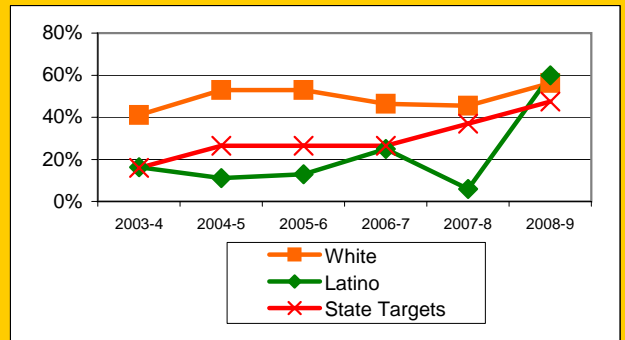
English Language Arts (ELA): Percent Proficient or Higher	State Targets	Schoolwide	Latino	White	Socio-Econ Disadv	English Learner	Stud with Disab
2003-4	13.6%	45.4%	36.9%	48.1%	23.5%		5.2%
2004-5	24.4%	53.1%	24.3%	63.1%	30.4%		11.8%
2005-6	24.4%	51.9%	23.1%	65.2%	25.0%		7.1%
2006-7	24.4%	50.4%	19.0%	56.0%	18.8%		27.3%
2007-8	35.2%	52.0%	17.6%	55.4%			37.5%
2008-9	46.0%	65.5%	53.3%	68.6%	56.3%		50.0%
State Average 2-12, 2008-9		52.4%	39.2%	70.3%	38.6%	33.5%	30.7%
2009-10	56.8%						

Math: Percent Proficient or Higher	State Targets	Schoolwide	Latino	White	Socio-Econ Disadv	English Learner	Stud with Disab
2003-4	16.0%	31.7%	16.2%	41.0%	11.7%		15.7%
2004-5	26.5%	40.4%	11.1%	52.9%	18.2%		14.3%
2005-6	26.5%	42.3%	13.0%	52.9%	12.5%		13.3%
2006-7	26.5%	42.4%	25.0%	46.4%	35.3%		30.8%
2007-8	37.0%	40.5%	5.9%	45.5%			25.0%
2008-9	47.5%	58.3%	60.0%	56.3%	62.5%		21.4%
State Average 2-12, 2008-9		54.5%	44.0%	67.7%	43.9%	43.0%	32.3%
2009-10	58.0%						

ELA

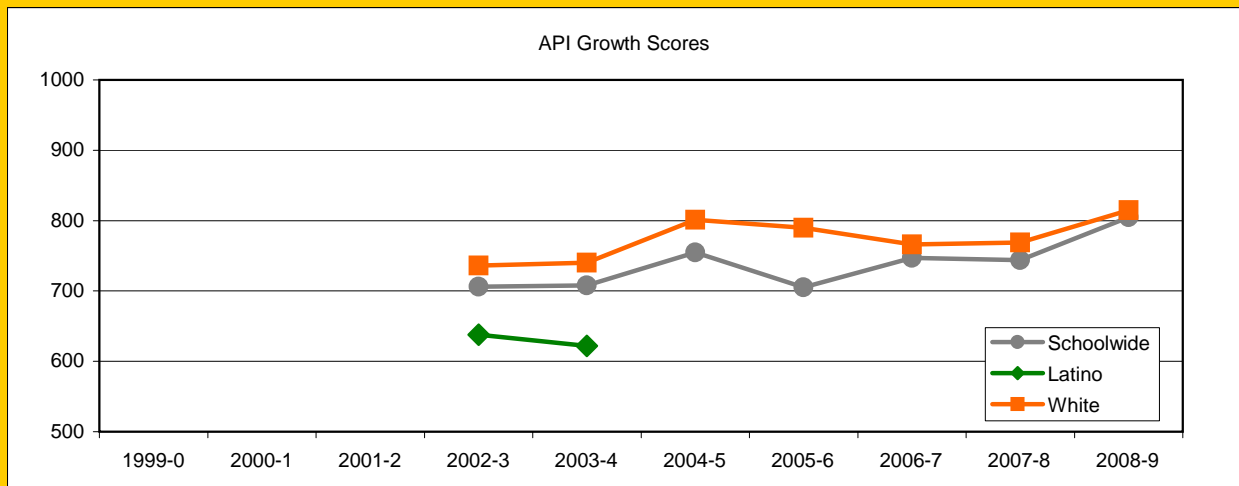


MATH



Exceed State Academic Performance Index (API) Growth Goals

	Schoolwide			Latino			White		
	Base	Growth/ Goal Met	STATE API (2-6)	Base	Growth/ Goal Met	STATE API (2-6)	Base	Growth/ Goal Met	STATE API (2-6)
2003-4	686	708 Met		614	622 Met		713	740 Met	
2004-5	706	755 Met					740	801 Met	
2005-6	755	705 Not Met	751			687	801	790 Not Met	838
2006-7	703	747 Met	761			702	788	766 Not Met	840
2007-8	763	744 Not Met	776			722	784	769 Not Met	850
2008-9	739	805 Met	790			738	768	815 Met	862



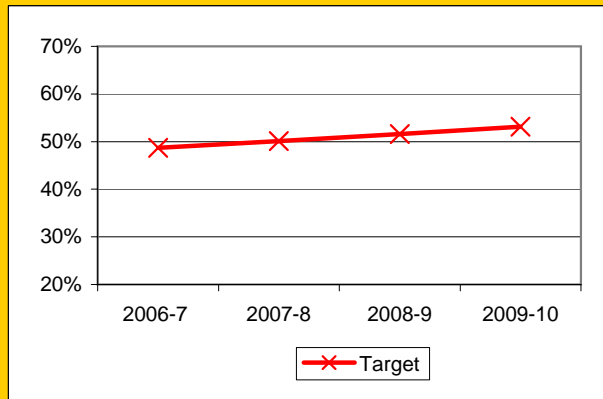
Increase Participation Across Demographic Spectrum in Advanced Courses

GATE (percent of all GATE students)	Latino		White		All Others	
	Number	Percent	Number	Percent	Number	Percent
2003-4						
2004-5						
2005-6						
2006-7						
2007-8	0	0.0%	1	100.0%	0	0.0%
2008-9	0	0.0%	0	0.0%	0	0.0%
2009-10						

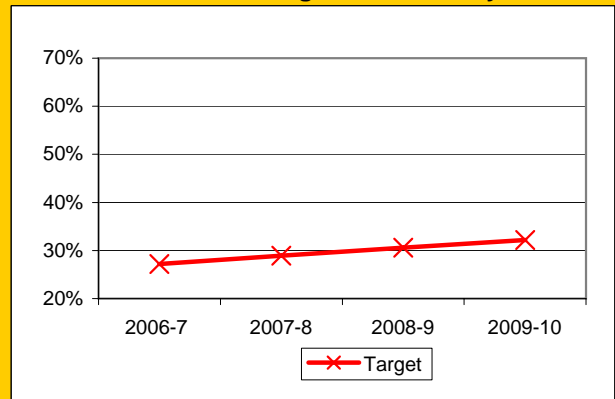
Progress on English Learners Gaining One Proficiency Level Annually and Attaining English Language Proficiency

	Gained one Level on CELDT		Gained English Proficiency		
	Target	Score	Target	Score	
2003-4	51.0%		30.0%		
2004-5	51.5%		30.7%		
2005-6	52.0%		31.4%		
2006-7	48.7%		27.2%		New Norms
2007-8	50.1%		28.9%		
2008-9	51.6%		30.6%		
2009-10	53.1%		32.2%		

Gained One Level On CELDT

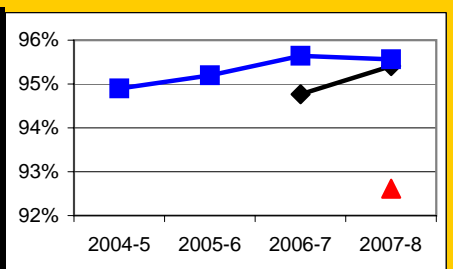


Attained English Proficiency



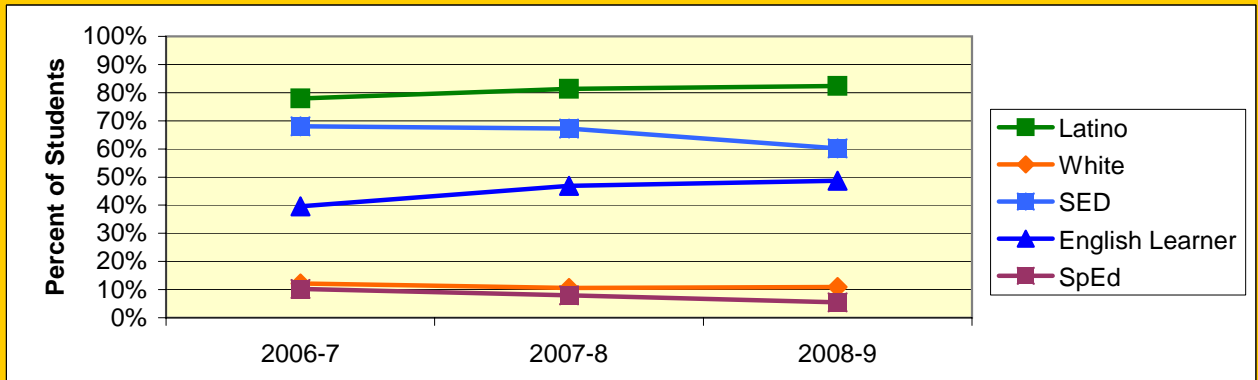
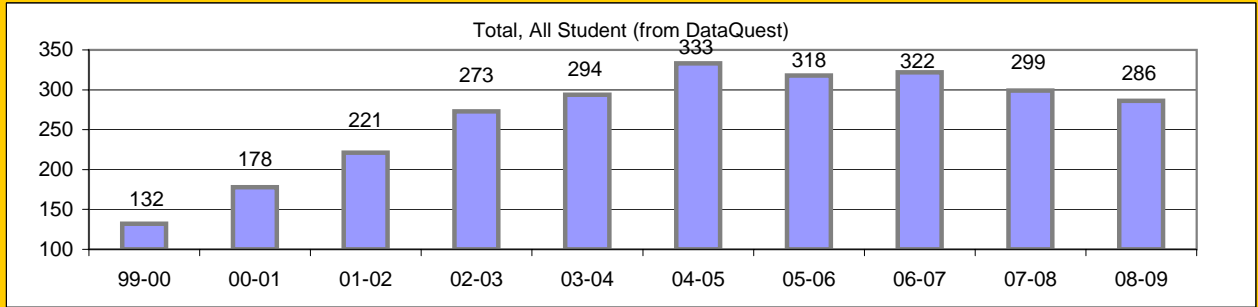
Increase Efforts to Enhance Revenue

Attendance (Percent over year)	Lowest Month	Whole Year	District
2004-5			94.9%
2005-6			95.2%
2006-7		94.8%	95.6%
2007-8	92.6%	95.4%	95.6%
2008-9			



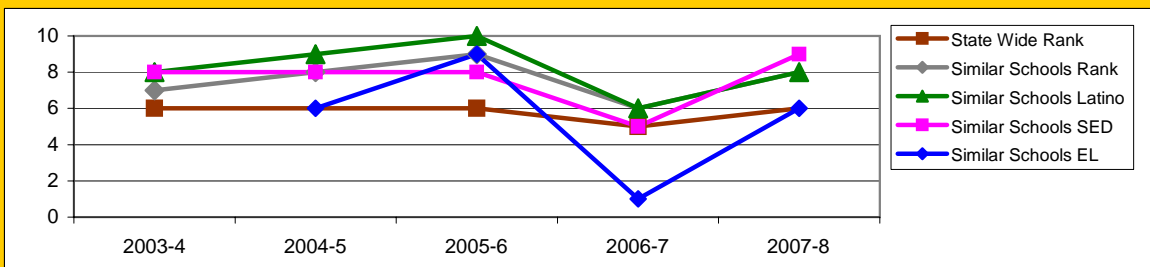
Board Focus Goals: S B Community Academy (26) - September 2009

Demographics (K-6, 0809 Aeries)	Total	Female	Male	Latino	White	SED	English Learner	SpEd
Number	294	144	150	242	32	177	143	16
Percent of Total		49.0%	51.0%	82.3%	10.9%	60.2%	48.6%	5.4%



Achieve a State Similar School Ranking of 8 or Higher (scale = 1-10)

	State Wide Rank	Similar Schools Rank	Similar Schools Latino	Similar Schools White	Similar Schools SED	Similar Schools EL	Similar Schools Disab
2003-4	6	7	8	NA	8	NA	NA
2004-5	6	8	9	NA	8	6	NA
2005-6	6	9	10	NA	8	9	NA
2006-7	5	6	6	NA	5	1	NA
2007-8	6	8	8	NA	9	6	NA



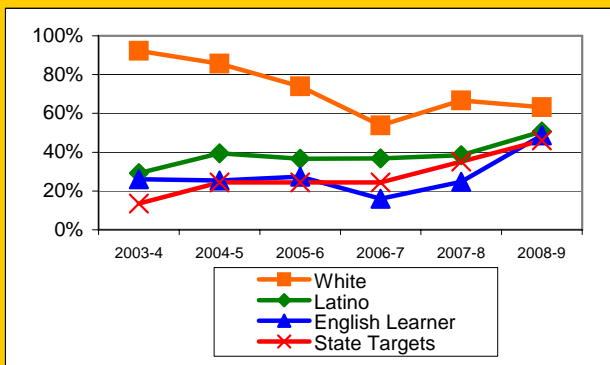
Exceed Federal Adequate Yearly Progress (AYP) Accountability Goals (*Blue* = Not enough students, *Bold/underline/italic* = Made by adjustment, *Red* = Did not pass

English Language Arts (ELA): Percent Proficient or Higher	State Targets	Schoolwide	Latino	White	Socio-Econ Disadv	English Learner	Stud with Disab
2003-4	13.6%	41.3%	29.2%	92.3%	30.8%	26.0%	13.3%
2004-5	24.4%	46.8%	39.5%	85.7%	41.6%	25.4%	5.9%
2005-6	24.4%	44.8%	36.7%	73.9%	33.3%	27.4%	11.1%
2006-7	24.4%	40.9%	36.8%	53.8%	32.9%	16.0%	18.2%
2007-8	35.2%	44.1%	38.4%	66.7%	36.8%	24.7%	37.9%
2008-9	46.0%	52.8%	50.6%	63.2%	48.6%	48.8%	47.6%
State Average 2-12, 2008-9		52.4%	39.2%	70.3%	38.6%	33.5%	30.7%
2009-10	56.8%						

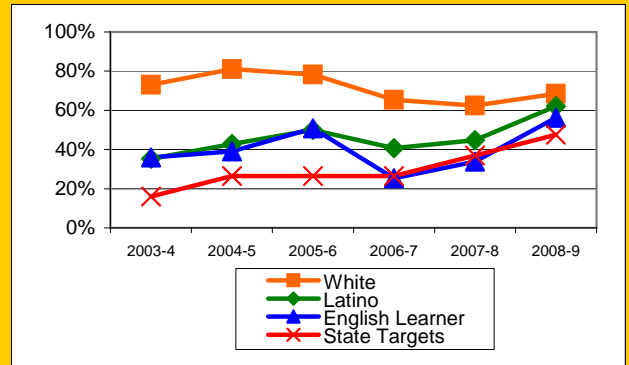
1 Mark

Math: Percent Proficient or Higher	State Targets	Schoolwide	Latino	White	Socio-Econ Disadv	English Learner	Stud with Disab
2003-4	16.0%	44.1%	35.3%	73.0%	37.3%	36.0%	13.3%
2004-5	26.5%	49.3%	42.8%	81.0%	43.2%	39.0%	11.8%
2005-6	26.5%	55.5%	50.0%	78.3%	47.7%	50.8%	29.6%
2006-7	26.5%	45.3%	40.7%	65.4%	36.5%	25.3%	22.7%
2007-8	37.0%	48.5%	44.7%	62.5%	43.8%	33.8%	30.0%
2008-9	47.5%	62.2%	62.0%	68.4%	57.2%	56.3%	42.9%
State Average 2-12, 2008-9		54.5%	44.0%	67.7%	43.9%	43.0%	32.3%
2009-10	58.0%						

ELA

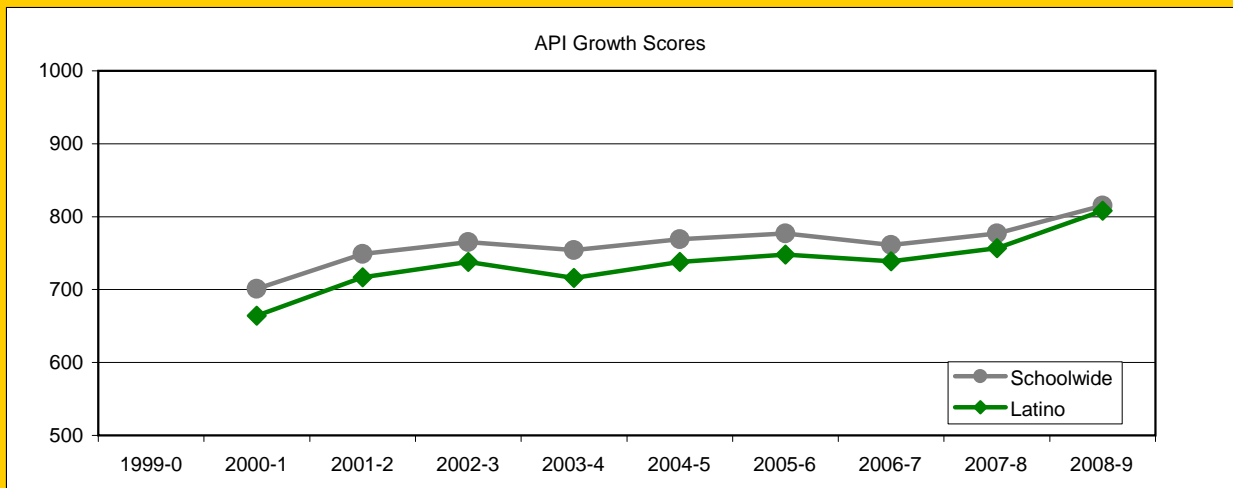


MATH



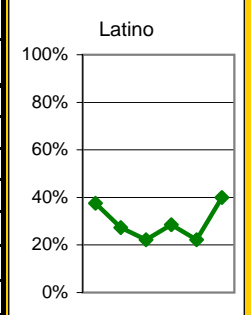
Exceed State Academic Performance Index (API) Growth Goals

	Schoolwide			Latino			White		
	Base	Growth/ Goal Met	STATE API (2-6)	Base	Growth/ Goal Met	STATE API (2-6)	Base	Growth/ Goal Met	STATE API (2-6)
2003-4	766	754 Not Met		736	716 Not Met				
2004-5	749	769 Met		714	738 Met				
2005-6	769	777 Met	751	738	748 Met	687			838
2006-7	779	761 Not Met	761	752	739 Not Met	702			840
2007-8	761	777 Met	776	740	757 Met	722			850
2008-9	778	815 Met	790	759	808 Met	738			862



Increase Participation Across Demographic Spectrum in Advanced Courses

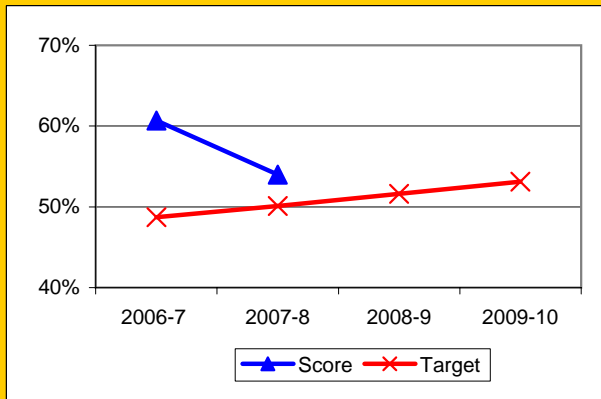
GATE (percent of all GATE students)	Latino		White		All Others	
	Number	Percent	Number	Percent	Number	Percent
2003-4	6	37.5%	8	50.0%	2	12.5%
2004-5	3	27.3%	6	54.5%	2	18.2%
2005-6	2	22.2%	4	44.4%	3	33.3%
2006-7	2	28.6%	3	42.9%	2	28.6%
2007-8	2	22.2%	5	55.6%	2	22.2%
2008-9	2	40.0%	2	40.0%	1	20.0%
2009-10						



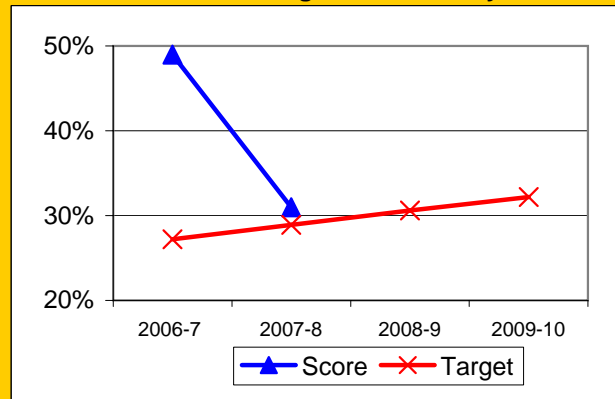
Progress on English Learners Gaining One Proficiency Level Annually and Attaining English Language Proficiency

	Gained one Level on CELDT		Gained English Proficiency		
	Target	Score	Target	Score	
2003-4	51.0%		30.0%		
2004-5	51.5%	52.0%	30.7%	29.5%	
2005-6	52.0%	58.5%	31.4%	38.2%	
2006-7	48.7%	60.7%	27.2%	49.0%	New Norms
2007-8	50.1%	54.0%	28.9%	31.0%	
2008-9	51.6%		30.6%		
2009-10	53.1%		32.2%		

Gained One Level On CELDT

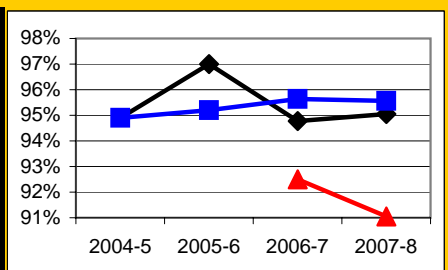


Attained English Proficiency



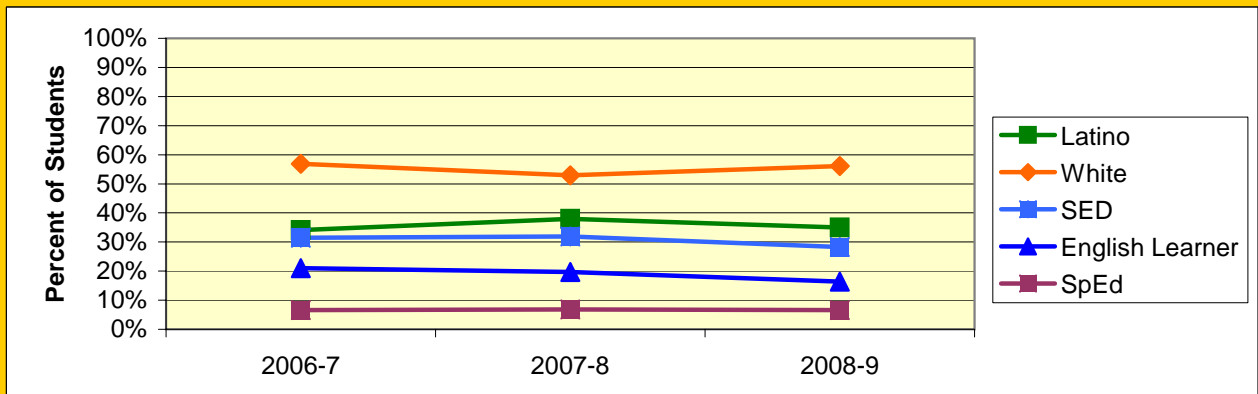
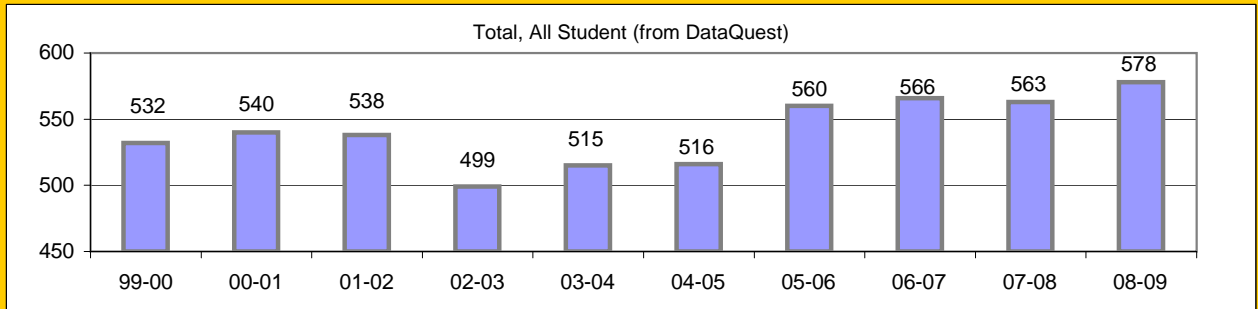
Increase Efforts to Enhance Revenue

Attendance (Percent over year)	Lowest Month	Whole Year	District
2004-5		94.9%	94.9%
2005-6		97.0%	95.2%
2006-7	92.5%	94.8%	95.6%
2007-8	91.1%	95.1%	95.6%
2008-9			



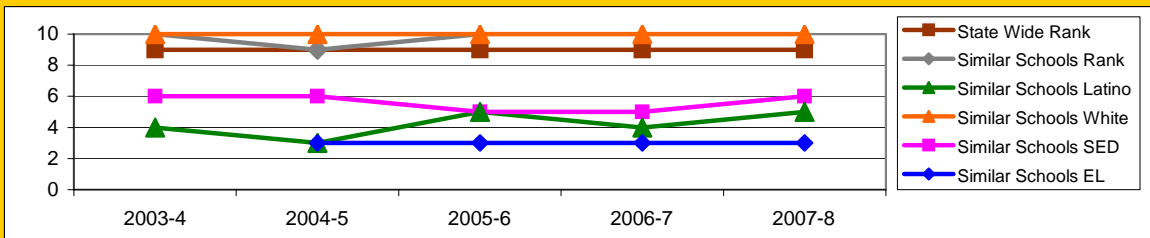
Board Focus Goals: Washington Elementary (31) - September 2009

Demographics (K-6, 0809 Aeries)	Total	Female	Male	Latino	White	SED	English Learner	SpEd
Number	574	253	321	201	322	162	94	38
Percent of Total		44.1%	55.9%	35.0%	56.1%	28.2%	16.4%	6.6%



Achieve a State Similar School Ranking of 8 or Higher (scale = 1-10)

	State Wide Rank	Similar Schools Rank	Similar Schools Latino	Similar Schools White	Similar Schools SED	Similar Schools EL	Similar Schools Disab
2003-4	9	10	4	10	6	NA	NA
2004-5	9	9	3	10	6	3	NA
2005-6	9	10	5	10	5	3	NA
2006-7	9	10	4	10	5	3	NA
2007-8	9	10	5	10	6	3	NA

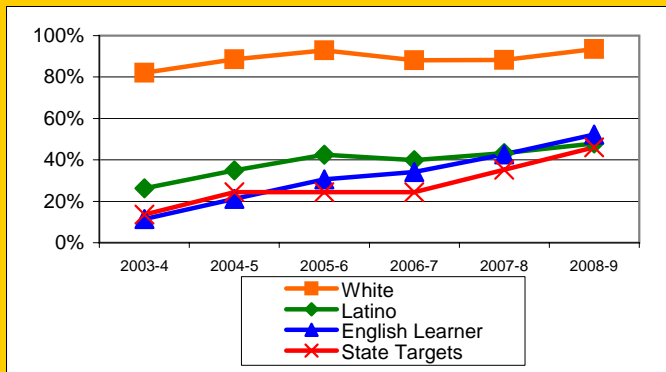


Exceed Federal Adequate Yearly Progress (AYP) Accountability Goals (Blue = Not enough students, Bold/underline/italic = Made by adjustment, Red = Did not pass

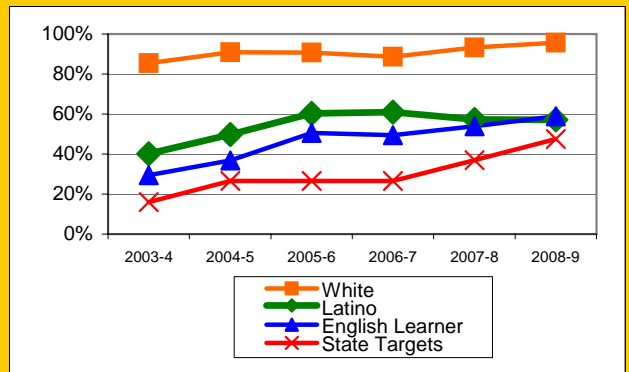
English Language Arts (ELA): Percent Proficient or Higher	State Targets	Schoolwide	Latino	White	Socio-Econ Disadv	English Learner	Stud with Disab
2003-4	13.6%	59.2%	26.2%	82.0%	26.1%	11.5%	14.8%
2004-5	24.4%	65.3%	35.0%	88.6%	35.3%	21.1%	18.2%
2005-6	24.4%	70.0%	42.5%	92.9%	39.3%	30.6%	22.7%
2006-7	24.4%	69.2%	39.9%	88.1%	39.7%	34.2%	22.7%
2007-8	35.2%	70.7%	43.3%	88.2%	41.7%	42.7%	33.3%
2008-9	46.0%	77.5%	47.9%	93.5%	46.9%	52.2%	40.0%
State Average 2-12, 2008-9		52.4%	39.2%	70.3%	38.6%	33.5%	30.7%
2009-10	56.8%						

Math: Percent Proficient or Higher	State Targets	Schoolwide	Latino	White	Socio-Econ Disadv	English Learner	Stud with Disab
2003-4	16.0%	66.5%	40.1%	85.5%	41.0%	29.4%	18.5%
2004-5	26.5%	73.5%	49.7%	90.9%	51.1%	36.8%	22.7%
2005-6	26.5%	76.8%	60.3%	90.8%	56.4%	50.6%	36.4%
2006-7	26.5%	76.9%	60.9%	88.6%	57.3%	49.4%	31.8%
2007-8	37.0%	79.1%	57.3%	93.3%	56.1%	53.9%	40.9%
2008-9	47.5%	82.7%	57.1%	95.7%	57.8%	58.9%	53.3%
State Average 2-12, 2008-9		54.5%	44.0%	67.7%	43.9%	43.0%	32.3%
2009-10	58.0%						

ELA

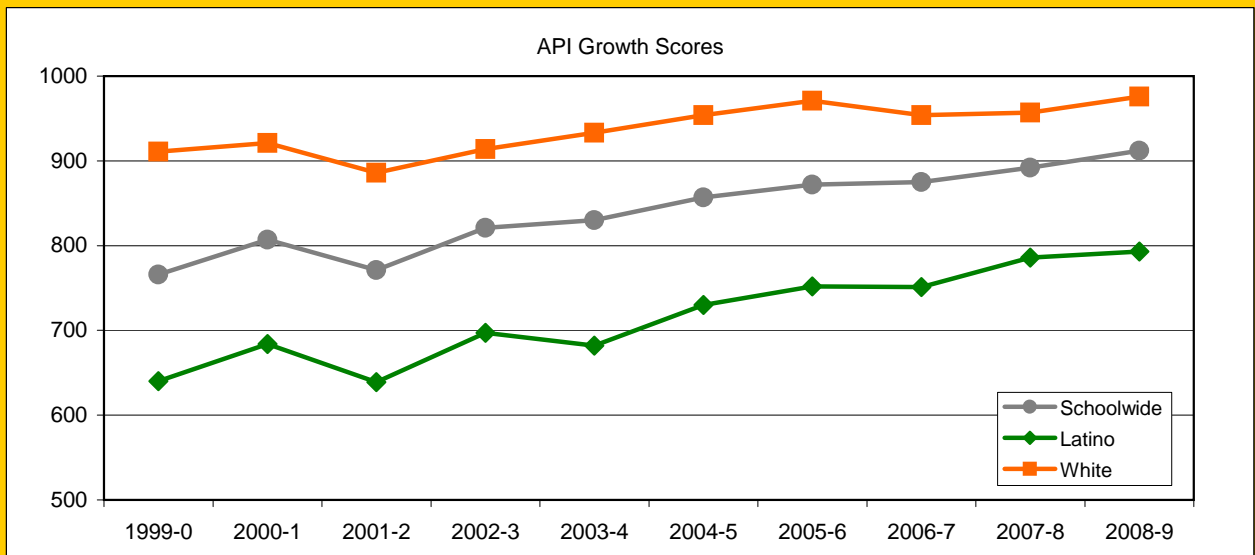


MATH



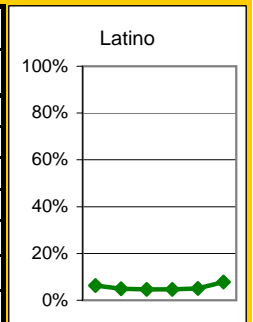
Exceed State Academic Performance Index (API) Growth Goals

	Schoolwide			Latino			White		
	Base	Growth/ Goal Met	STATE API (2-6)	Base	Growth/ Goal Met	STATE API (2-6)	Base	Growth/ Goal Met	STATE API (2-6)
2003-4	812	830 Met		680	682 Met		915	933 Met	
2004-5	826	857 Met		681	730 Met		929	954 Met	
2005-6	857	872 Met	751	730	752 Met	687	954	971 Met	838
2006-7	873	875 Met	761	757	751 Not Met	702	969	954 Met	840
2007-8	884	892 Met	776	764	786 Met	722	958	957 Met	850
2008-9	886	912 Met	790	784	793 Met	738	953	976 Met	862



Increase Participation Across Demographic Spectrum in Advanced Courses

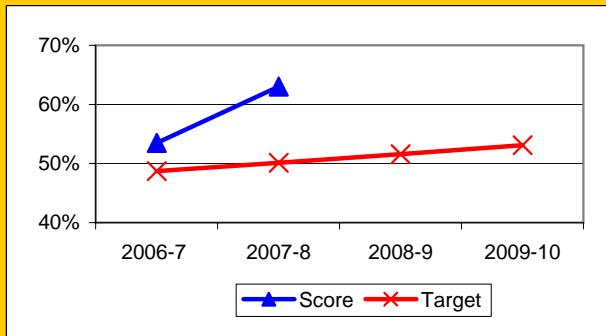
GATE (percent of all GATE students)	Latino		White		All Others	
	Number	Percent	Number	Percent	Number	Percent
2003-4	6	6.3%	75	78.9%	14	14.7%
2004-5	4	4.9%	65	79.3%	13	15.9%
2005-6	4	4.7%	67	78.8%	14	16.5%
2006-7	4	4.7%	67	77.9%	15	17.4%
2007-8	4	5.1%	60	76.9%	14	17.9%
2008-9	4	7.8%	39	76.5%	8	15.7%
2009-10						



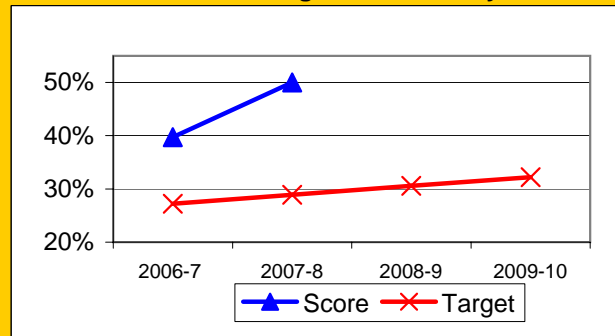
Progress on English Learners Gaining One Proficiency Level Annually and Attaining English Language Proficiency

	Gained one Level on CELDT		Gained English Proficiency		
	Target	Score	Target	Score	
2003-4	51.0%		30.0%		
2004-5	51.5%	66.0%	30.7%	55.1%	
2005-6	52.0%	56.1%	31.4%	32.5%	
2006-7	48.7%	53.5%	27.2%	39.7%	New Norms
2007-8	50.1%	63.0%	28.9%	50.0%	
2008-9	51.6%		30.6%		
2009-10	53.1%		32.2%		

Gained One Level On CELDT

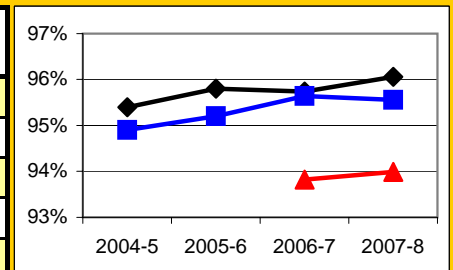


Attained English Proficiency



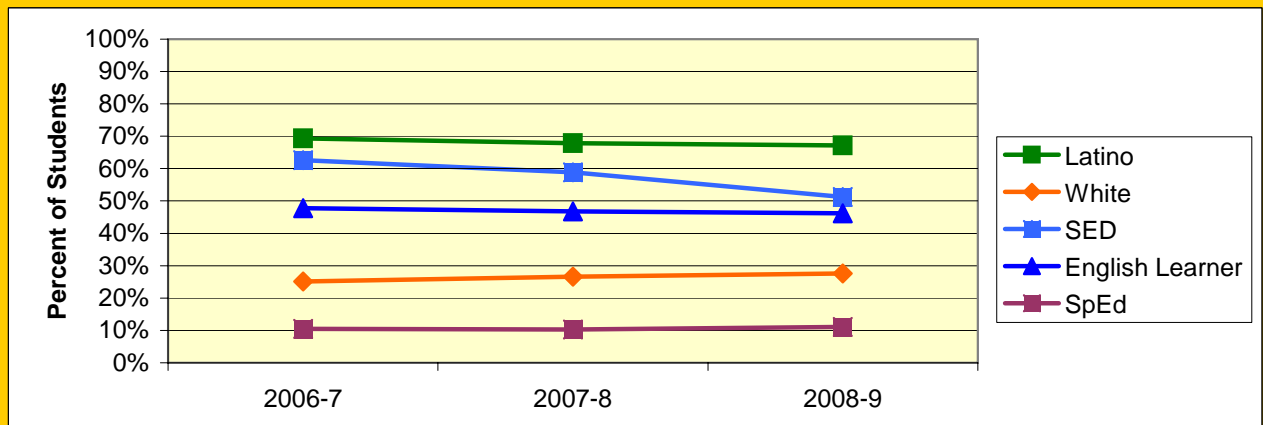
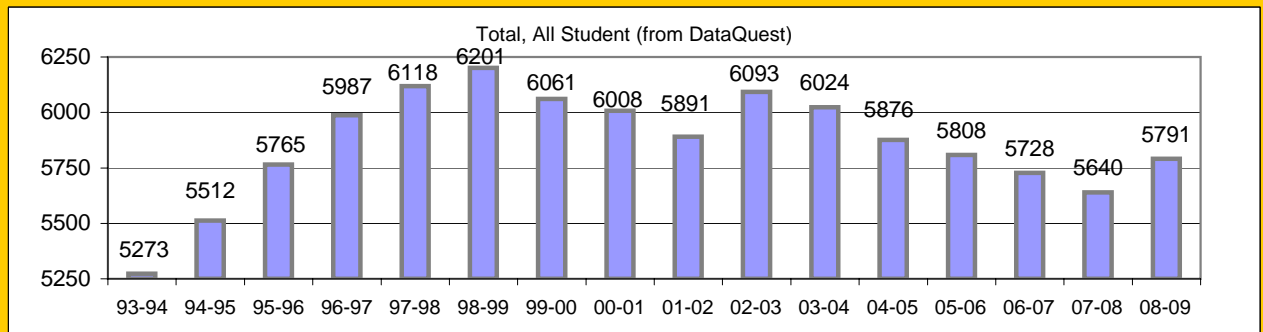
Increase Efforts to Enhance Revenue

Attendance (Percent over year)	Lowest Month	Whole Year	District
		95.4%	94.9%
		95.8%	95.2%
	93.8%	95.7%	95.6%
	94.0%	96.1%	95.6%



Board Focus Goals: Elementary District - September 2009

Demographics (K-6, 0809 Aeries)	Total	Female	Male	Latino	White	SED	English Learner	SpEd
Number	5723	2759	2964	3843	1578	2933	2641	636
Percent of Total		48.2%	51.8%	67.2%	27.6%	51.2%	46.1%	11.1%



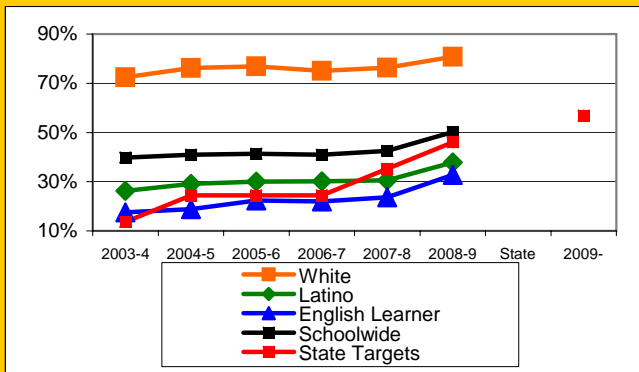
Elementary District Continued

Exceed Federal Adequate Yearly Progress (AYP) Accountability Goals (Blue = Not enough students, Bold/underline/italic = Made by adjustment, Red = Did not pass

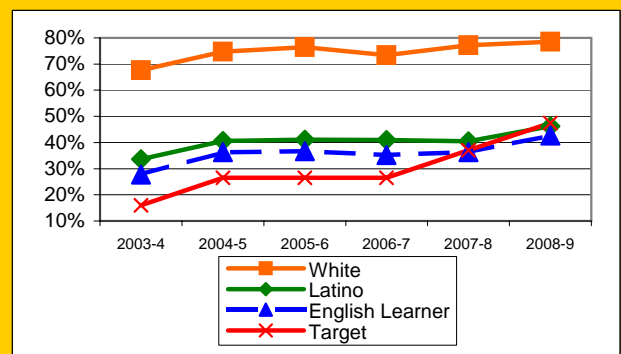
English Language Arts (ELA): Percent Proficient or Higher	State Targets	Schoolwide	Latino	White	Socio-Econ Disadv	English Learner	Stud with Disab	
2003-4	13.6%	39.8%	26.2%	72.5%	24.7%	17.5%	9.8%	Mark 1
2004-5	24.4%	41.0%	29.1%	76.2%	27.7%	18.8%	10.1%	Mark 2
2005-6	24.4%	41.3%	30.0%	76.8%	28.9%	22.3%	11.8%	PI Y1
2006-7	24.4%	40.9%	30.1%	75.1%	29.0%	22.0%	13.6%	PI Y2
2007-8	35.2%	42.5%	30.5%	76.4%	30.2%	23.7%	24.1%	PI Y3
2008-9	46.0%	50.2%	<u>37.9%</u>	80.7%	<u>36.8%</u>	<u>32.8%</u>	<u>33.4%</u>	PI Y3
State Average 2-12, 2008-9		52.4%	39.2%	70.3%	38.6%	33.5%	30.7%	
2009-10	56.8%							PI Y3

Math: Percent Proficient or Higher	State Targets	Schoolwide	Latino	White	Socio-Econ Disadv	English Learner	Stud with Disab	
2003-4	16.0%	43.3%	33.6%	67.6%	32.6%	27.8%	12.9%	Mark 1
2004-5	26.5%	49.1%	40.6%	74.7%	39.7%	36.3%	12.9%	Mark 2
2005-6	26.5%	49.6%	41.1%	76.5%	40.1%	36.7%	<u>18.5%</u>	PI Y1
2006-7	26.5%	48.7%	41.0%	73.4%	39.6%	35.2%	<u>18.9%</u>	PI Y2
2007-8	37.0%	49.9%	40.5%	77.2%	40.9%	36.3%	29.8%	PI Y3
2008-9	47.5%	55.3%	<u>46.2%</u>	78.5%	44.9%	<u>42.7%</u>	40.6%	PI Y3
State Average 2-12, 2008-9		54.5%	44.0%	67.7%	43.9%	43.0%	32.3%	
2009-10	58.0%							PI Y3

ELA



Math

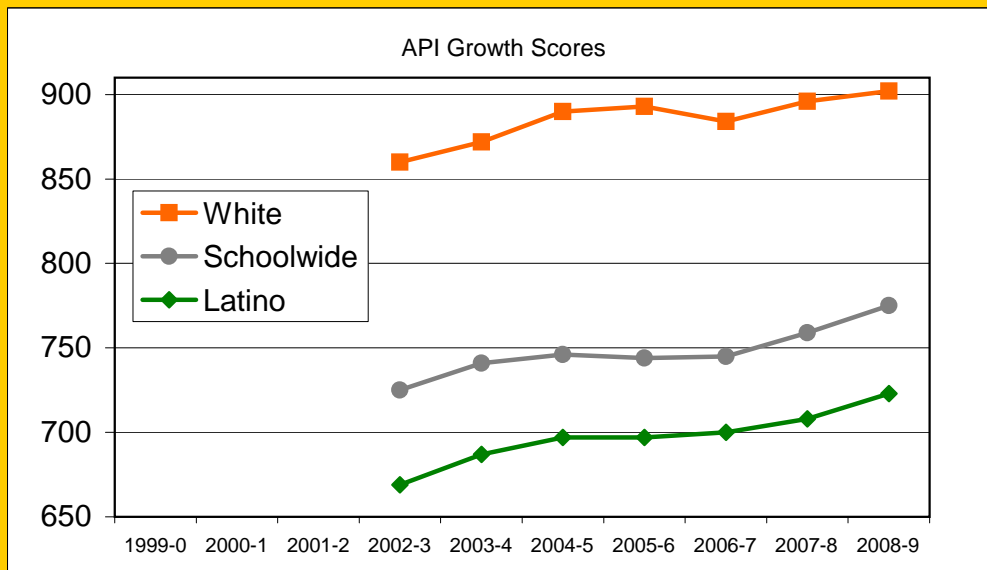


Elementary District Continued

Exceed State Academic Performance Index (API) Growth Goals

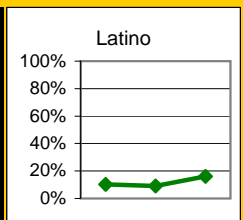
Districts have no "Met" or "Not Met" status

	Schoolwide			Latino			White		
	Base	Growth/Goal Met	STATE API (2-6)	Base	Growth/Goal Met	STATE API (2-6)	Base	Growth/Goal Met	STATE API (2-6)
2003-4	719	741		662	687		857	872	
2004-5	738	746		686	697		866	890	
2005-6	746	744	751	697	697	687	890	893	838
2006-7	744	745	761	697	700	702	891	884	840
2007-8	759	759	776	714	708	722	894	896	850
2008-9	755	775	790	707	723	738	892	902	862



Increase Participation Across Demographic Spectrum in Advanced Courses (Percent of GATE students within GATE population)

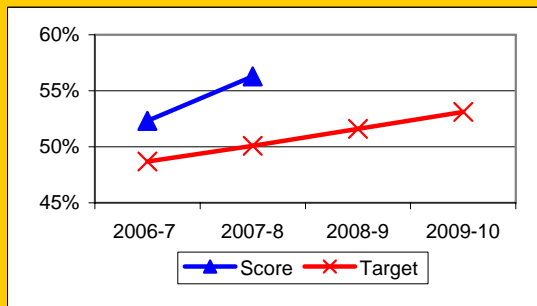
GATE (percent of all GATE students)	Latino		White		All Others	
	Number	Percent	Number	Percent	Number	Percent
2006-7	28	10.3%	211	77.9%	32	11.8%
2007-8	22	9.0%	197	80.4%	26	10.6%
2008-9	42	16.0%	196	74.8%	24	9.2%
2009-10						



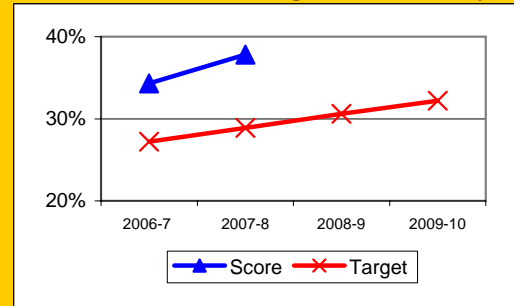
Progress on English Learners Gaining One Proficiency Level Annually and Attaining English Language Proficiency

	Gained one Level on CELDT		Gained English Proficiency	
	Target	Score	Target	Score
2003-4	51.0%	66.7%	30.0%	43.2%
2004-5	51.5%	58.0%	30.7%	39.2%
2005-6	52.0%	57.9%	31.4%	38.0%
2006-7	48.7%	52.3%	27.2%	34.3%
2007-8	50.1%	56.3%	28.9%	37.8%
2008-9	51.6%		30.6%	
2009-10	53.1%		32.2%	

Gained One Level On CELDT



Attained English Proficiency



Increase Efforts to Enhance Revenue

Attendance (Percent over year)	Lowest Month	District
2004-5		94.9%
2005-6		95.2%
2006-7	94.0%	95.6%
2007-8	93.6%	95.6%
2008-9		

