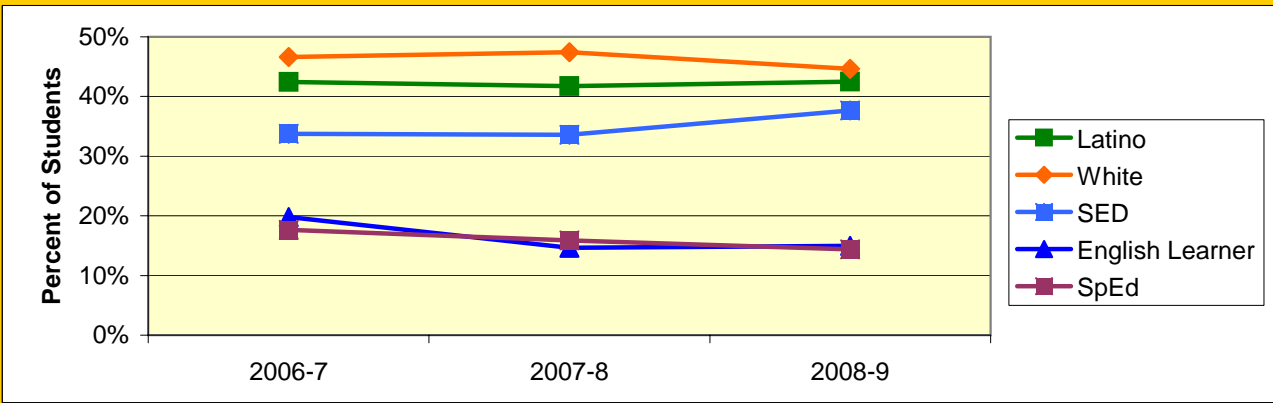
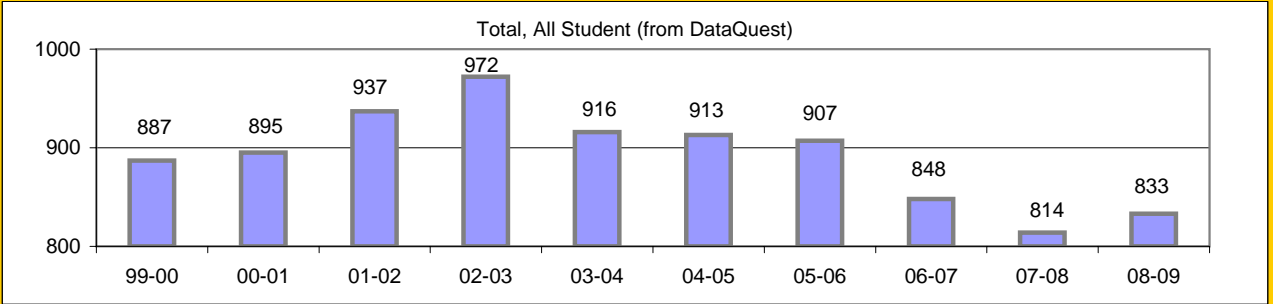


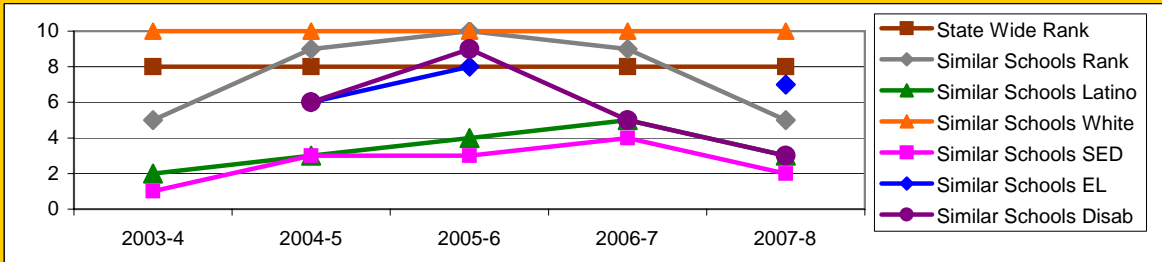
# Board Focus Goals: Goleta Valley Junior High (6) - September 2009

Demographics (7-8, 0809 Aeries)	Total	Female	Male	Latino	White	SED	English Learner	SpEd
Number	847	409	438	360	378	319	127	122
Percent of Total		48.3%	51.7%	42.5%	44.6%	37.7%	15.0%	14.4%



## Achieve a State Similar School Ranking of 8 or Higher (scale = 1-10)

	State Wide Rank	Similar Schools Rank	Similar Schools Latino	Similar Schools White	Similar Schools SED	Similar Schools EL	Similar Schools Disab
2003-4	8	5	2	10	1	NA	NA
2004-5	8	9	3	10	3	6	6
2005-6	8	10	4	10	3	8	9
2006-7	8	9	5	10	4	NA	5
2007-8	8	5	3	10	2	7	3



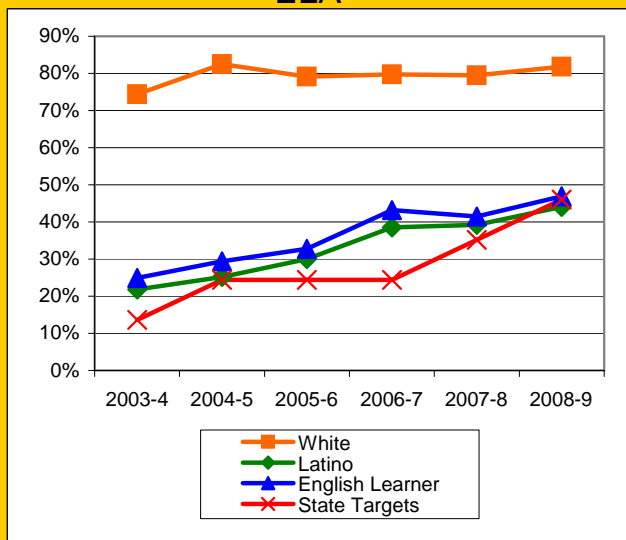
Goleta Valley Continued

**Exceed Federal Adequate Yearly Progress (AYP) Accountability Goals** (Blue = Not enough students, Bold/underline/italic = Made by adjustment, Red = Did not pass

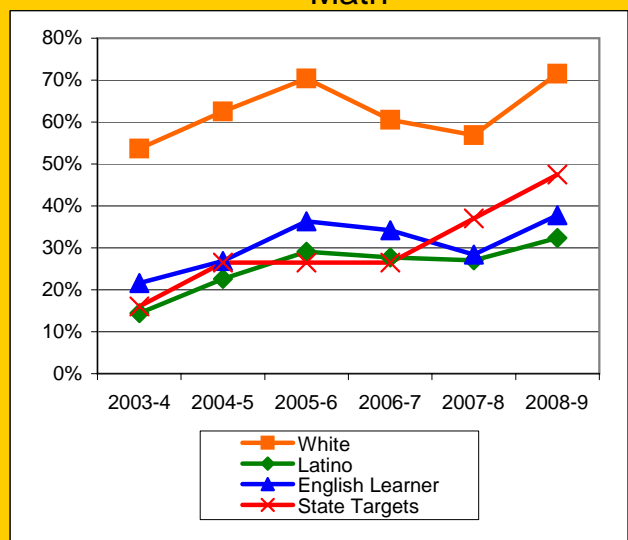
English Language Arts (ELA): Percent Proficient or Higher (based on CST exams)	State Targets	Schoolwide	Latino	White	Socio-Econ Disadv	English Learner	Stud with Disab	
2003-4	13.6%	52.6%	21.8%	74.4%	19.8%	24.9%	8.9%	
2004-5	24.4%	59.4%	25.2%	82.5%	25.0%	29.4%	12.2%	
2005-6	24.4%	58.7%	30.0%	79.1%	26.6%	32.8%	16.1%	
2006-7	24.4%	63.9%	38.5%	79.7%	34.4%	43.2%	19.8%	Mark 1
2007-8	35.2%	62.6%	39.2%	79.5%	34.1%	41.5%	12.7%	Mark 2
2008-9	46.0%	67.2%	<u>44.0%</u>	81.8%	<u>43.0%</u>	46.9%	<u>34.6%</u>	PI Y1
State Averages 2-12, 2008-09		52.4%	39.2%	70.3%	38.6%	33.5%	30.7%	
2009-10	56.8%							F-PI Y1

Math: Percent Proficient or Higher (Based on CST exams)	State Targets	Schoolwide	Latino	White	Socio-Econ Disadv	English Learner	Stud with Disab	
2003-4	16.0%	39.0%	14.4%	53.7%	13.8%	21.6%	3.3%	
2004-5	26.5%	47.4%	<u>22.6%</u>	62.5%	<u>21.6%</u>	26.9%	9.1%	
2005-6	26.5%	54.9%	29.1%	70.4%	26.6%	36.3%	<u>19.8%</u>	
2006-7	26.5%	49.0%	27.7%	60.5%	26.6%	34.2%	<u>10.8%</u>	
2007-8	37.0%	45.5%	27.0%	56.9%	22.6%	28.4%	7.9%	
2008-9	47.5%	56.0%	<u>32.4%</u>	71.5%	<u>28.9%</u>	<u>37.8%</u>	<u>22.5%</u>	PI Y1
State Averages 2-12, 2008-09		54.5%	44.0%	67.6%	43.9%	43.0%	32.3%	
2009-10	58.0%							F-PI Y1

ELA

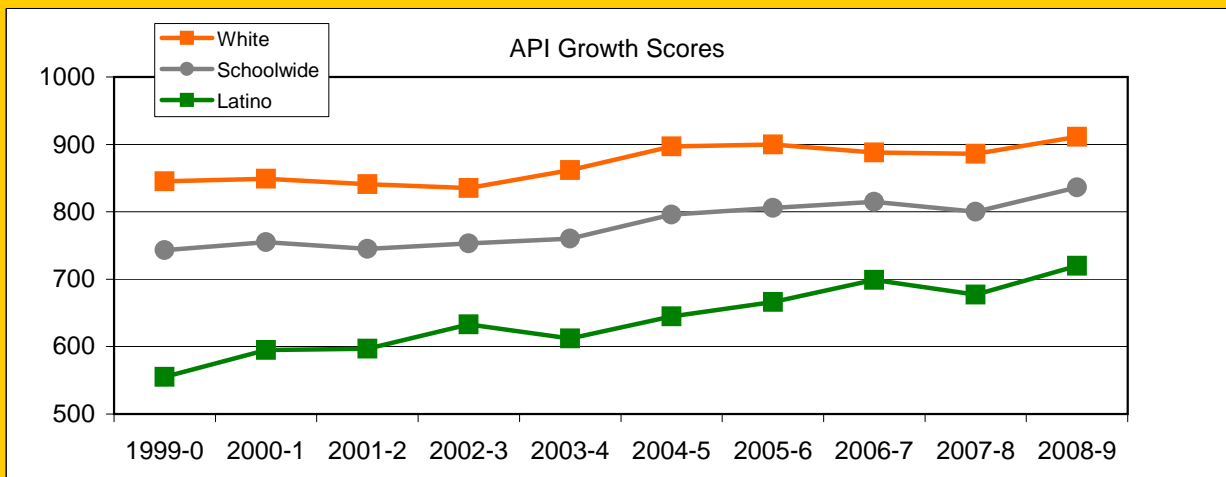


Math



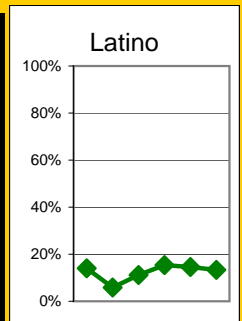
### Exceed State Academic Performance Index (API) Growth Goals

	Schoolwide			Latino			White		
	Base	Growth/ Goal Met	State API (7-8)	Base	Growth/ Goal Met	State API (7-8)	Base	Growth/ Goal Met	State API (7-8)
2003-4	753	760 Met		634	612 Not Met		838	862 Met	
2004-5	761	796 Met		616	645 Met		860	897 Met	
2005-6	796	806 Met	715	645	666 Met	642	897	900 Met	805
2006-7	810	815 Met	720	670	699 Met	651	903	888 Met	807
2007-8	815	800 Met	735	699	677 Not Met	669	888	886 Met	818
2008-9	817	836 Met	754	704	720 Met	690	888	911 Met	833



### Increase Participation Across Demographic Spectrum in Advanced Courses

GATE (percent of all GATE students)	Latino		White		All Others	
	Number	Percent	Number	Percent	Number	Percent
2003-4	17	14.0%	83	68.6%	21	17.4%
2004-5	13	5.9%	167	75.9%	40	18.2%
2005-6	25	11.2%	155	69.5%	43	19.3%
2006-7	33	15.3%	150	69.8%	32	14.9%
2007-8	31	14.6%	148	69.5%	34	16.0%
2008-9	30	13.3%	152	67.3%	44	19.5%
2009-10						

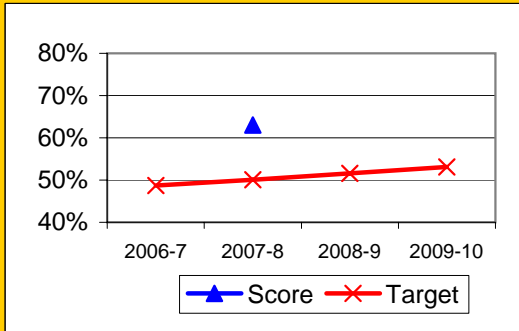


## Progress on English Learners Gaining One Proficiency Level Annually and Attaining English Language Proficiency

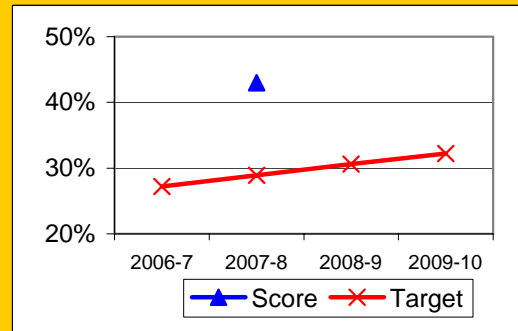
	Gained One Level On CELDT		Attained English Proficiency	
	Target	Score	Target	Score
2003-4	51.0%		30.0%	
2004-5	51.5%	84.7%	30.7%	52.2%
2005-6	52.0%	84.3%	31.4%	68.4%
2006-7	48.7%		27.2%	
2007-8	50.1%	63.0%	28.9%	43.0%
2008-9	51.6%		30.6%	
2009-10	53.1%		32.2%	

New Norms

Gained One Level On CELDT

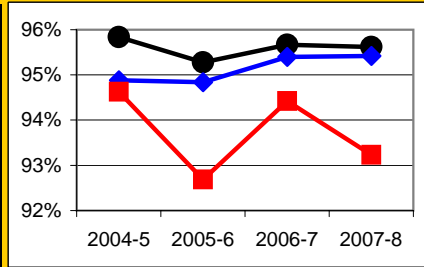


Attained English Proficiency



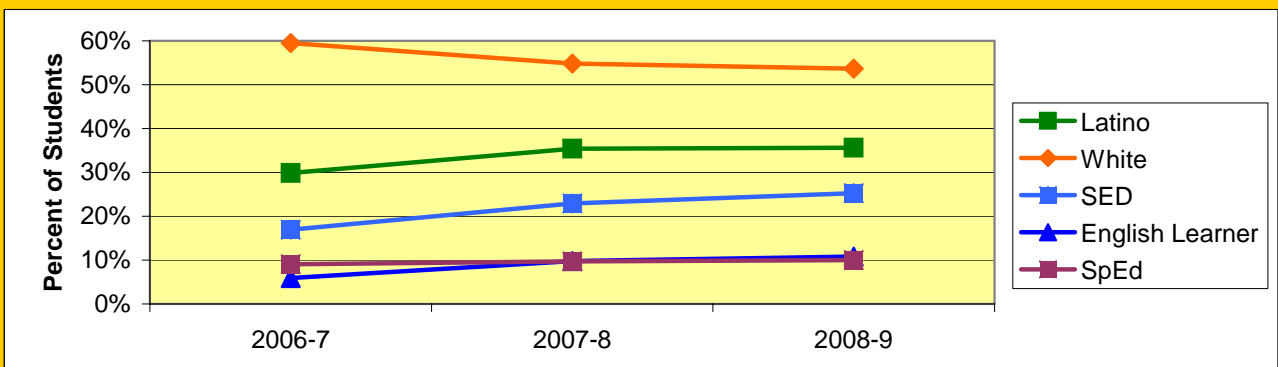
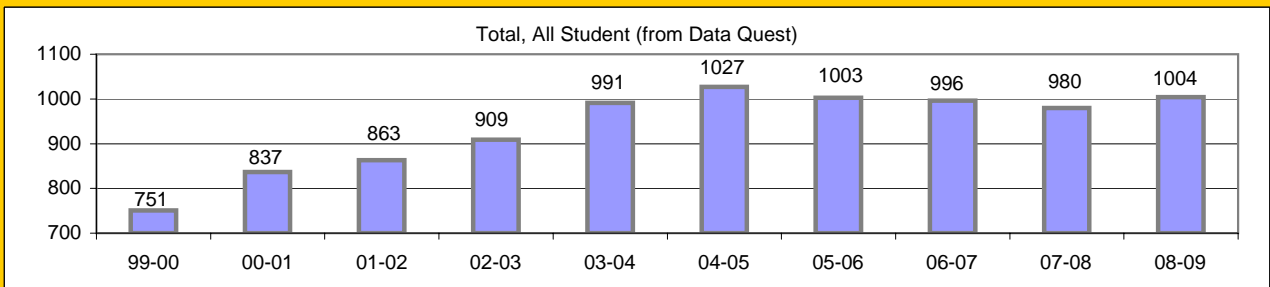
## Increase Efforts to Enhance Revenue

Attendance (Percent over year)	Lowest Month	Whole Year	District (Jr.)
2004-5	94.6%	95.8%	94.9%
2005-6	92.7%	95.3%	94.8%
2006-7	94.4%	95.7%	95.4%
2007-8	93.2%	95.6%	95.4%
2008-9			



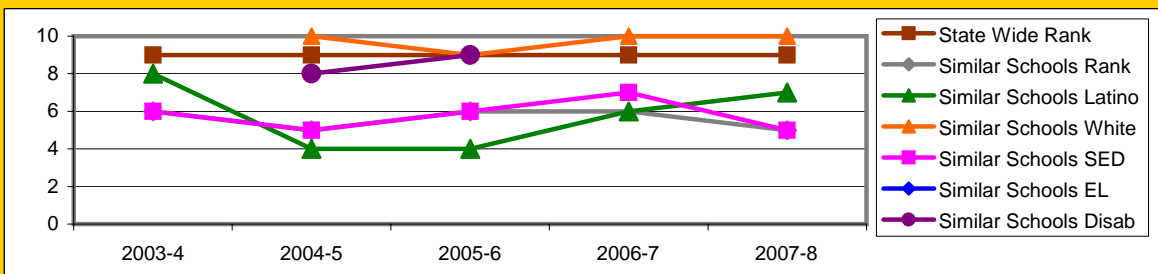
# Board Focus Goals: La Colina Junior High School (1) - Sept. 2009

Demographics (7-8, 0809 Aeries)	Total	Female	Male	Latino	White	SED	English Learner	SpEd
Number	999	534	465	356	536	252	108	100
Percent of Total		53.5%	46.5%	35.6%	53.7%	25.2%	10.8%	10.0%



## Achieve a State Similar School Ranking of 8 or Higher (scale = 1-10)

	State Wide Rank	Similar Schools Rank	Similar Schools Latino	Similar Schools White	Similar Schools SED	Similar Schools EL	Similar Schools Disab
2003-4	9	6	8	NA	6	NA	NA
2004-5	9	5	4	10	5	NA	8
2005-6	9	6	4	9	6	7	9
2006-7	9	6	6	10	7	NA	NA
2007-8	9	5	7	10	5	NA	NA



**Exceed Federal Adequate Yearly Progress (AYP) Accountability Goals** (Blue = Not enough students, Bold/underline/italic = Made by adjustment, Red = Did not pass

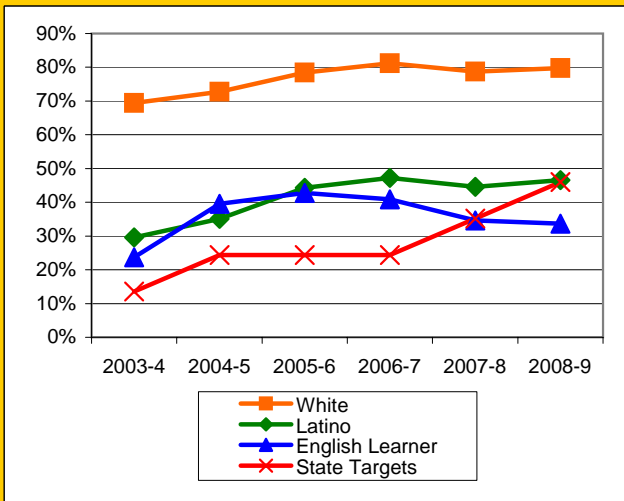
English Language Arts (ELA): Percent Proficient or Higher (based on CST exams)	State Targets	Schoolwide	Latino	White	Socio-Econ Disadv	English Learner	Stud with Disab
2003-4	13.6%	58.3%	29.6%	69.4%	26.8%	23.7%	14.4%
2004-5	24.4%	62.5%	35.1%	72.7%	33.1%	39.5%	25.9%
2005-6	24.4%	68.6%	44.3%	78.4%	42.9%	42.8%	<u>17.6%</u>
2006-7	24.4%	69.8%	47.2%	81.2%	43.6%	40.9%	21.5%
2007-8	35.2%	65.7%	44.6%	78.7%	39.7%	<u>34.6%</u>	12.8%
2008-9	46.0%	67.4%	46.5%	79.8%	39.1%	33.7%	18.6%
State Averages 2-12, 2008-09		52.4%	39.2%	70.3%	38.6%	33.5%	30.7%
2009-10	56.8%						

**Mark 4**

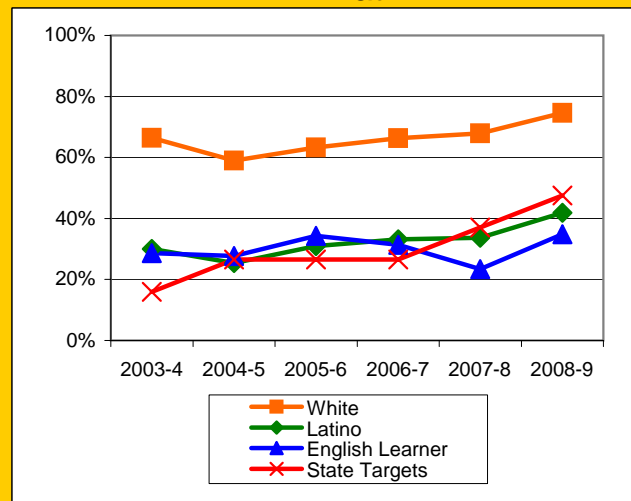
Math: Percent Proficient or Higher (Based on CST exams)	State Targets	Schoolwide	Latino	White	Socio-Econ Disadv	English Learner	Stud with Disab
2003-4	16.0%	56.3%	30.0%	66.4%	31.4%	28.6%	14.8%
2004-5	26.5%	49.8%	<u>25.4%</u>	59.0%	<u>24.9%</u>	27.7%	<u>24.1%</u>
2005-6	26.5%	54.4%	31.0%	63.3%	35.1%	34.3%	<u>9.9%</u>
2006-7	26.5%	56.6%	33.2%	66.3%	30.4%	31.4%	15.2%
2007-8	37.0%	55.7%	33.7%	67.9%	33.0%	23.4%	12.8%
2008-9	47.5%	62.9%	<u>41.9%</u>	74.6%	<u>38.0%</u>	<u>34.8%</u>	16.3%
State Averages 2-12, 2008-09		54.5%	44.0%	67.6%	43.9%	43.0%	32.3%
2009-10	58.0%						

**Mark 4**

ELA

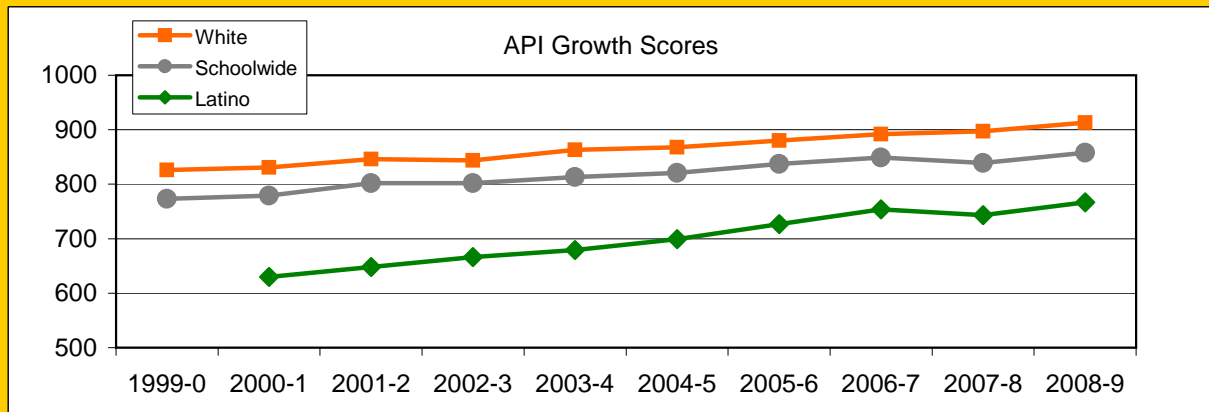


Math



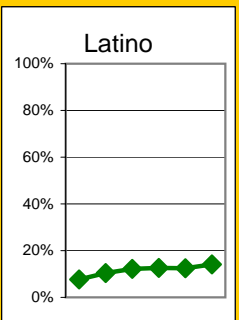
### Exceed State Academic Performance Index (API) Growth Goals

	Schoolwide			Latino			White		
	Base	Growth/ Goal Met	State API (7-8)	Base	Growth/ Goal Met	State API (7-8)	Base	Growth/ Goal Met	State API (7-8)
2003-4	806	813 Met		669	679 Met		850	863 Met	
2004-5	814	821 Met		681	699 Met		863	868 Met	
2005-6	821	837 Met	715	699	727 Met	642	868	880 Met	805
2006-7	835	849 Met	720	724	754 Met	651	878	892 Met	807
2007-8	849	839 Met	735	754	743 Not Met	669	892	897 Met	818
2008-9	848	858 Met	754	758	767 Met	690	901	913 Met	833



### Increase Participation Across Demographic Spectrum in Advanced Courses

GATE (percent of all GATE students)	Latino		White		All Others	
	Number	Percent	Number	Percent	Number	Percent
2003-4	14	7.7%	143	78.1%	26	14.2%
2004-5	33	10.4%	248	78.5%	35	11.1%
2005-6	41	12.2%	256	76.2%	39	11.6%
2006-7	38	12.6%	225	74.5%	39	12.9%
2007-8	38	12.5%	228	75.0%	38	12.5%
2008-9	43	14.1%	221	72.5%	41	13.4%
2009-10						

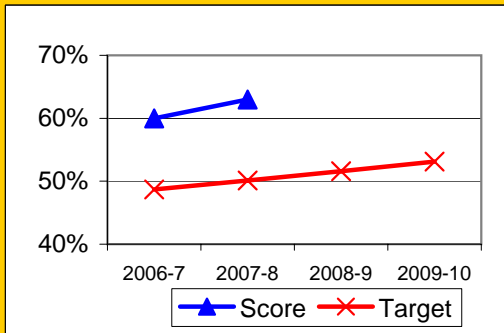


## Progress on English Learners Gaining One Proficiency Level Annually and Attaining English Language Proficiency

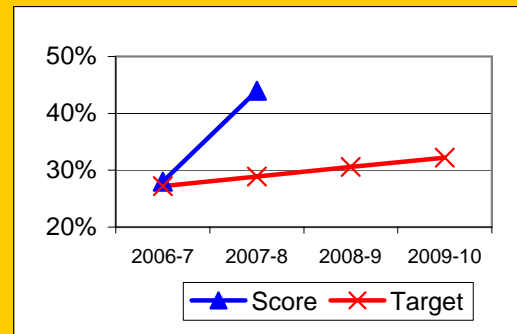
	Gained One Level On CELDT		Attained English Proficiency	
	Target	Score	Target	Score
2003-4	51.0%		30.0%	
2004-5	51.5%	75.8%	30.7%	39.6%
2005-6	52.0%	86.4%	31.4%	76.9%
2006-7	48.7%	60.0%	27.2%	28.0%
2007-8	50.1%	63.0%	28.9%	44.0%
2008-9	51.6%		30.6%	
2009-10	53.1%		32.2%	

New Norms

Gained One Level On CELDT

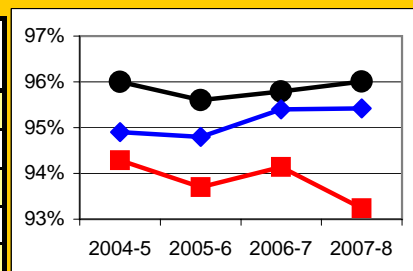


Attained English Proficiency



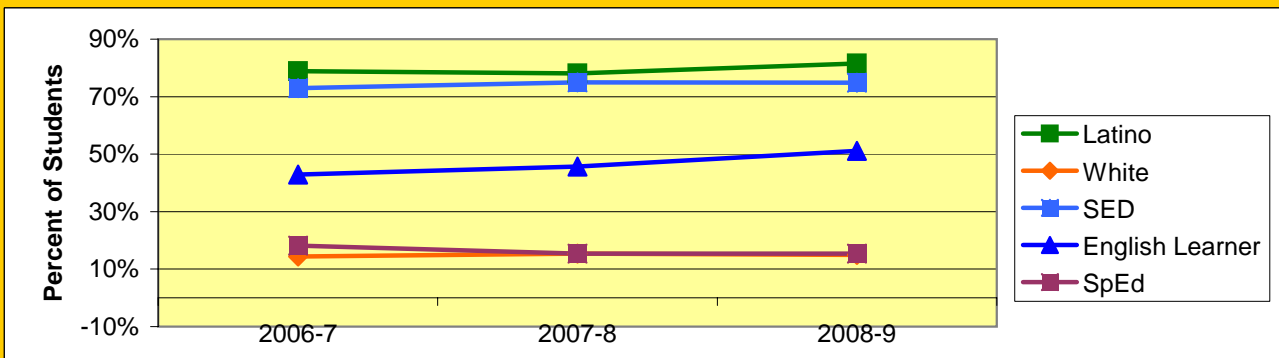
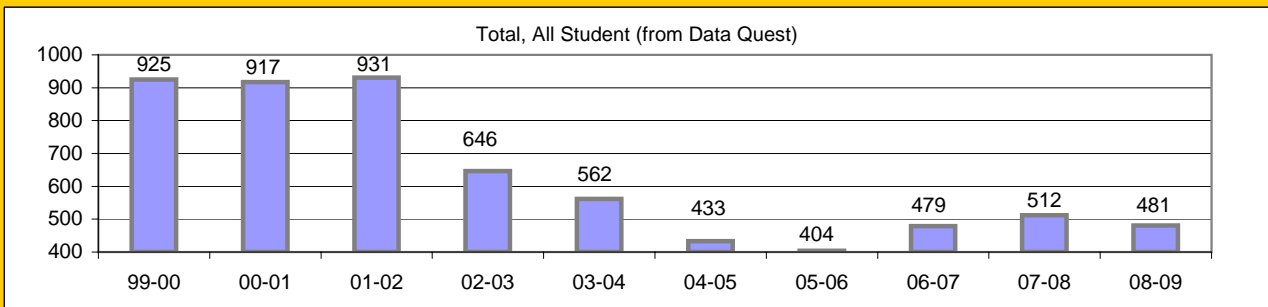
## Increase Efforts to Enhance Revenue

Attendance (Percent over year)	Lowest Month	Whole Year	District
2004-5	94.3%	96.0%	94.9%
2005-6	93.7%	95.6%	94.8%
2006-7	94.1%	95.8%	95.4%
2007-8	93.2%	96.0%	95.4%
2008-9			



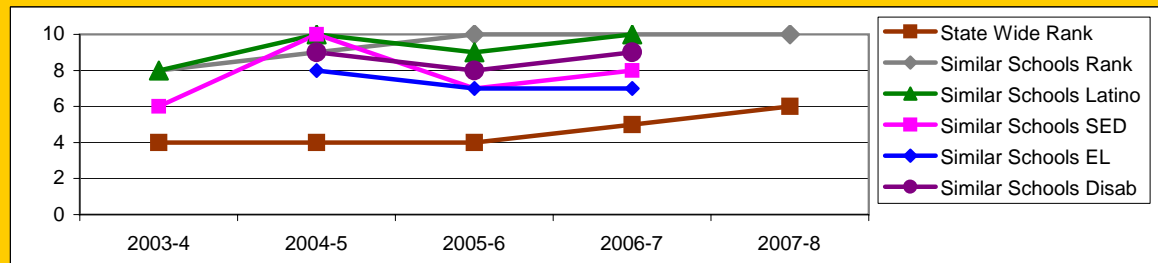
## Board Focus Goals: La Cumbre Junior High (2) - September 2009

Demographics (7-8, 0809 Aeries)	Total	Female	Male	Latino	White	SED	English Learner	SpEd
Number	481	235	246	392	72	360	246	74
Percent of Total		48.9%	51.1%	81.5%	15.0%	74.8%	51.1%	15.4%



### Achieve a State Similar School Ranking of 8 or Higher (scale = 1-10)

	State Wide Rank	Similar Schools Rank	Similar Schools Latino	Similar Schools White	Similar Schools SED	Similar Schools EL	Similar Schools Disab
2003-4	4	8	8	NA	6	NA	NA
2004-5	4	9	10	NA	10	8	9
2005-6	4	10	9	NA	7	7	8
2006-7	5	10	10	NA	8	7	9
2007-8	6	10	10	10	9	7	NA

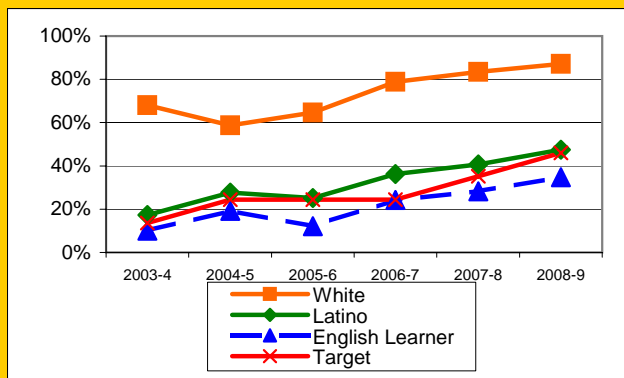


**Exceed Federal Adequate Yearly Progress (AYP) Accountability Goals** (Blue = Not enough students, Bold/underline/italic = Made by adjustment, Red = Did not pass)

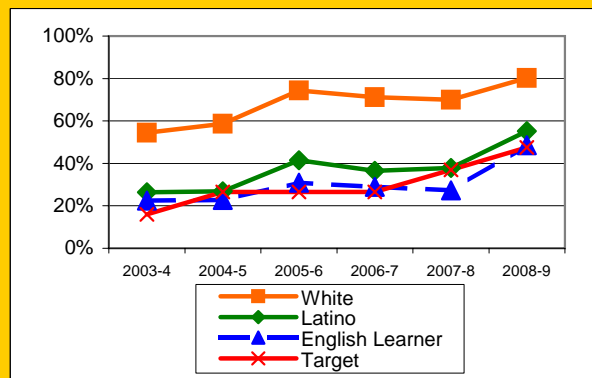
English Language Arts (ELA): Percent Proficient or Higher (based on CST exams)	State Targets	Schoolwide	Latino	White	Socio-Econ Disadv	English Learner	Stud with Disab	
2003-4	13.6%	24.5%	17.3%	68.1%	15.7%	10.0%	3.1%	PI Y1
2004-5	24.4%	31.3%	27.6%	58.7%	24.5%	19.2%	8.3%	PI Y2
2005-6	24.4%	29.4%	25.2%	64.7%	20.3%	12.1%	8.1%	PI Y3
2006-7	24.4%	45.2%	36.3%	78.8%	33.2%	<u>24.3%</u>	<u>17.5%</u>	PI Y4
2007-8	35.2%	48.4%	40.7%	83.5%	38.3%	28.2%	18.4%	PI Y4
2008-9	46.0%	54.7%	47.5%	87.1%	47.7%	<u>34.7%</u>	46.7%	PI Y5
State Averages 2-12, 2008-09		52.4%	39.2%	70.3%	38.6%	33.5%	30.7%	
2009-10	56.8%							PI Y5

Math: Percent Proficient or Higher (Based on CST exams)	State Targets	Schoolwide	Latino	White	Socio-Econ Disadv	English Learner	Stud with Disab	
2003-4	16.0%	30.5%	26.4%	54.5%	25.5%	22.4%	11.5%	PI Y1
2004-5	26.5%	30.3%	26.8%	58.7%	25.5%	22.8%	19.0%	PI Y2
2005-6	26.5%	45.3%	41.5%	74.3%	37.5%	30.9%	<u>19.5%</u>	PI Y3
2006-7	26.5%	43.8%	36.5%	71.2%	33.7%	29.0%	<u>22.2%</u>	PI Y4
2007-8	37.0%	44.2%	37.9%	70.0%	36.9%	27.3%	19.5%	PI Y4
2008-9	47.5%	59.9%	55.2%	80.3%	55.3%	48.5%	<u>35.7%</u>	PI Y5
State Averages 2-12, 2008-09		54.5%	44.0%	67.6%	43.9%	43.0%	32.3%	
2009-10	58.0%							PI Y5

ELA

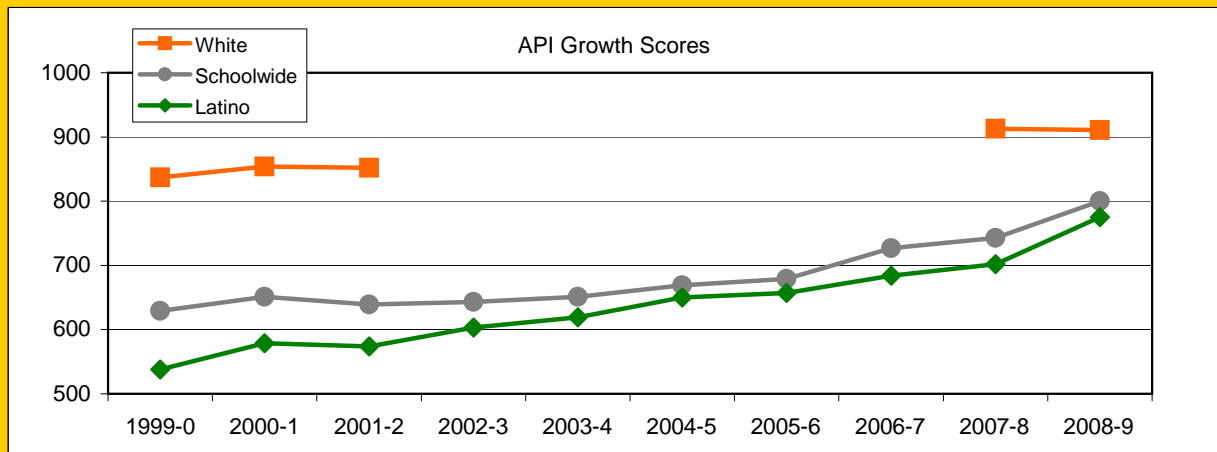


Math



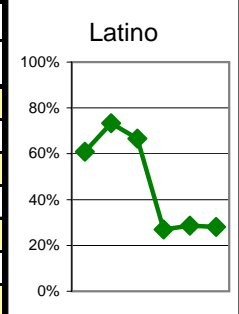
### Exceed State Academic Performance Index (API) Growth Goals

	Schoolwide			Latino			White		
	Base	Growth/ Goal Met	State API (7-8)	Base	Growth/ Goal Met	State API (7-8)	Base	Growth/ Goal Met	State API (7-8)
2003-4	611	651 Met		570	619 Met				
2004-5	658	669 Met		627	650 Met				
2005-6	669	679 Met	715	650	657 Met	642			805
2006-7	680	727 Met	720	658	684 Met	651			807
2007-8	727	743 Met	735	684	702 Met	669		913 Met	818
2008-9	759	800 Met	754	720	775 Met	690	916	911 Met	833



### Increase Participation Across Demographic Spectrum in Advanced Courses

GATE (percent of all GATE students)	Latino		White		All Others	
	Number	Percent	Number	Percent	Number	Percent
2003-4	28	60.9%	15	32.6%	3	6.5%
2004-5	33	73.3%	12	26.7%	0	0.0%
2005-6	32	66.7%	11	22.9%	5	10.4%
2006-7	14	26.9%	32	61.5%	6	11.5%
2007-8	16	28.6%	34	60.7%	6	10.7%
2008-9	9	28.1%	20	62.5%	3	9.4%
2009-10						

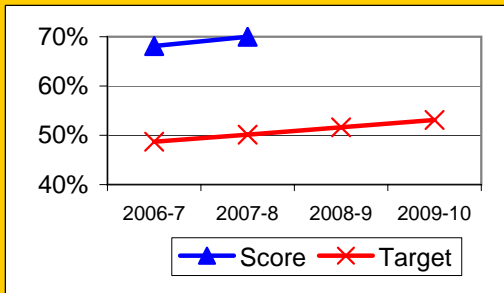


La Cumbre continued

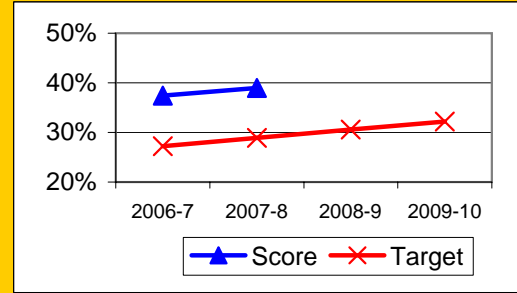
## Progress on English Learners Gaining One Proficiency Level Annually and Attaining English Language Proficiency

	Gained One Level On CELDT		Attained English Proficiency		
	Target	Score	Target	Score	
2003-4	51.0%		30.0%		
2004-5	51.5%	86.5%	30.7%	58.8%	
2005-6	52.0%	79.1%	31.4%	52.5%	
2006-7	48.7%	68.1%	27.2%	37.4%	New Norms
2007-8	50.1%	70.0%	28.9%	39.0%	
2008-9	51.6%		30.6%		
2009-10	53.1%		32.2%		

Gained One Level On CELDT

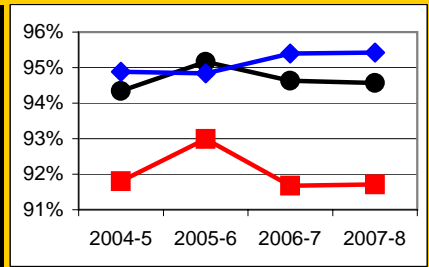


Attained English Proficiency



## Increase Efforts to Enhance Revenue

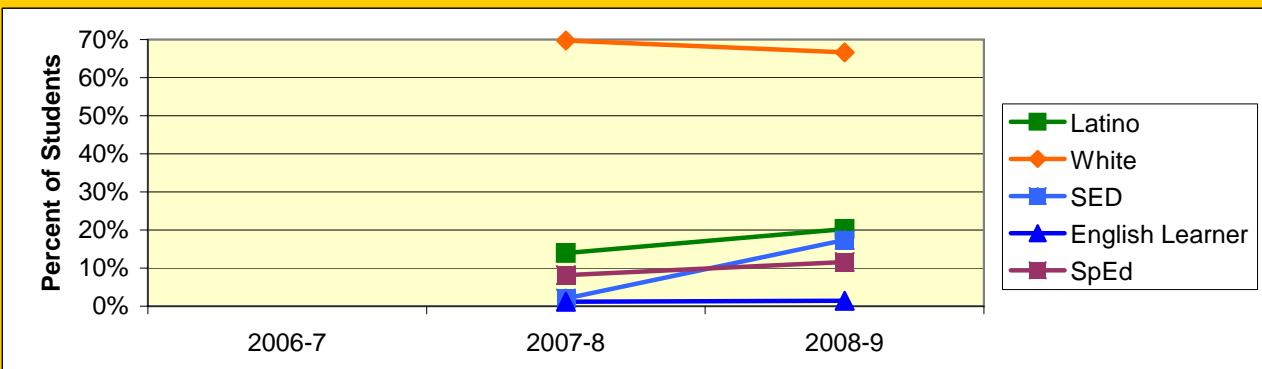
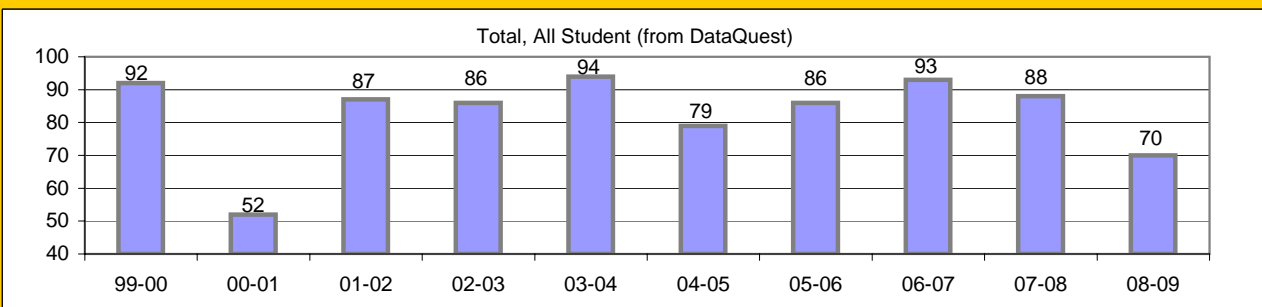
Attendance (Percent over year)	Lowest Month	Whole Year	District
2004-5	91.8%	94.3%	94.9%
2005-6	93.0%	95.2%	94.8%
2006-7	91.7%	94.6%	95.4%
2007-8	91.7%	94.6%	95.4%
2008-9			



Prepared by Dr. Davis Hayden, Director of Research, Evaluation, and Technology

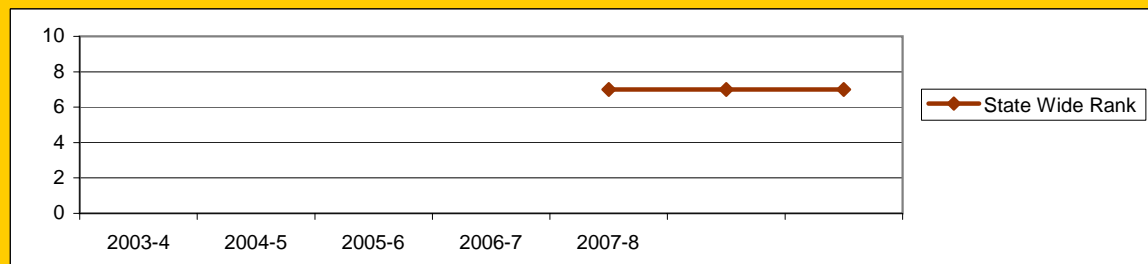
# Board Focus Goals: Santa Barbara Charter Middle (8) - Sept. 2009

Demographics (7-8, 0809 Aeries)	Total	Female	Male	Latino	White	SED	English Learner	SpEd
Number	69	31	38	14	46	12	1	8
Percent of Total		44.9%	55.1%	20.3%	66.7%	17.4%	1.4%	11.6%



## Achieve a State Similar School Ranking of 8 or Higher (scale = 1-10)

	State Wide Rank	Similar Schools Rank	Similar Schools Latino	Similar Schools White	Similar Schools SED	Similar Schools EL	Similar Schools Disab
2003-4	NA	NA	NA	NA	NA	NA	NA
2004-5	NA	NA	NA	NA	NA	NA	NA
2005-6	7	NA	NA	NA	NA	NA	NA
2006-7	7	NA	NA	NA	NA	NA	NA
2007-8	7	NA	NA	NA	NA	NA	NA



**Exceed Federal Adequate Yearly Progress (AYP) Accountability Goals** (Blue = Not enough students, Bold/underline/italic = Made by adjustment, Red = Did not pass

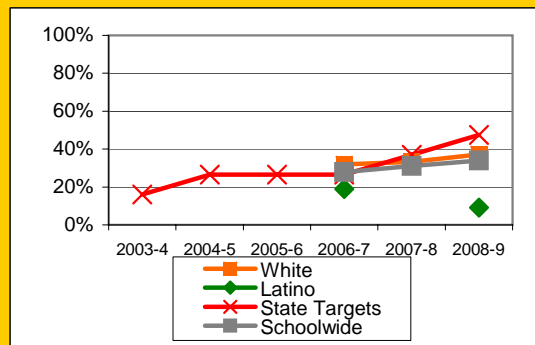
English Language Arts (ELA): Percent Proficient or Higher (based on CST exams)	State Targets	Schoolw ide	Latino	White	Socio- Econ Disadv	English Learner	Stud with Disab
2003-4	13.6%						
2004-5	24.4%						
2005-6	24.4%						
2006-7	24.4%	55.3%	33.3%	61.7%	27.3%		
2007-8	35.2%	62.2%		69.8%			
2008-9	46.0%	64.3%		73.7%	27.3%		
State Averages 2-12, 2008-09		52.4%	39.2%	70.3%	38.6%	33.5%	30.7%
2009-10	56.8%						

Math: Percent Proficient or Higher (Based on CST exams)	State Targets	Schoolw ide	Latino	White	Socio- Econ Disadv	English Learner	Stud with Disab
2003-4	16.0%						
2004-5	26.5%						
2005-6	26.5%						
2006-7	26.5%	27.8%	19.0%	32.0%	18.2%		
2007-8	37.0%	31.0%		33.3%			
2008-9	47.5%	34.0%	9.1%	37.1%			
State Averages 2-12, 2008-09		54.5%	44.0%	67.6%	43.9%	43.0%	32.3%
2009-10	58.0%						

ELA

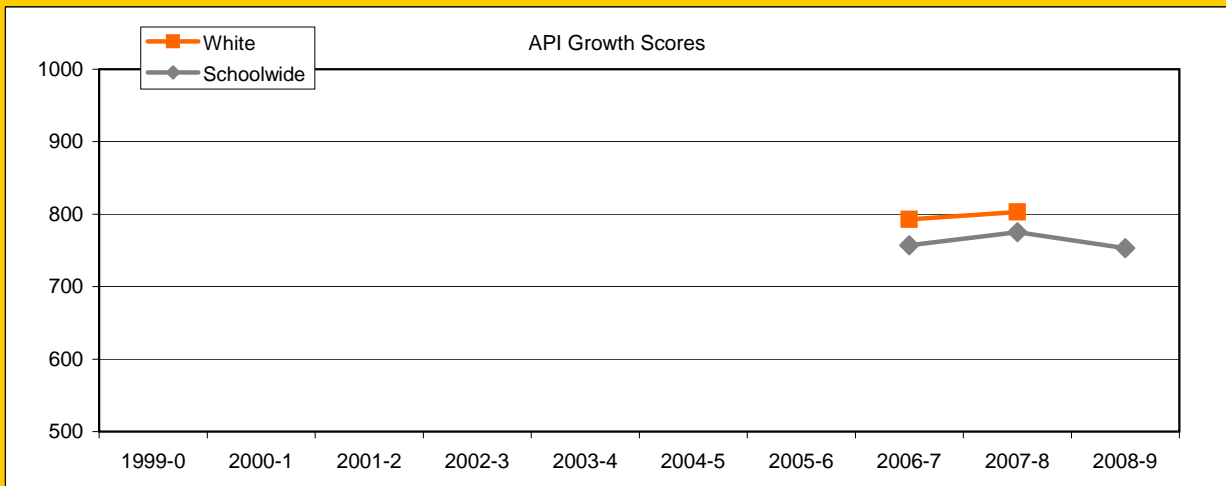


Math



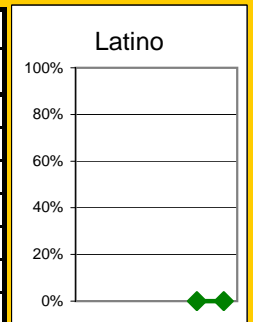
### Exceed State Academic Performance Index (API) Growth Goals

	Schoolwide			Latino			White		
	Base	Growth/ Goal Met	State API (7-8)	Base	Growth/ Goal Met	State API (7-8)	Base	Growth/ Goal Met	State API (7-8)
2003-4									
2004-5									
2005-6			715			642			805
2006-7	766	757 NotMet	720			651		793 Met	807
2007-8	757	775 Met	735			669	793	803 Met	818
2008-9	783	753 NotMet	754			690	814		833



### Increase Participation Across Demographic Spectrum in Advanced Courses

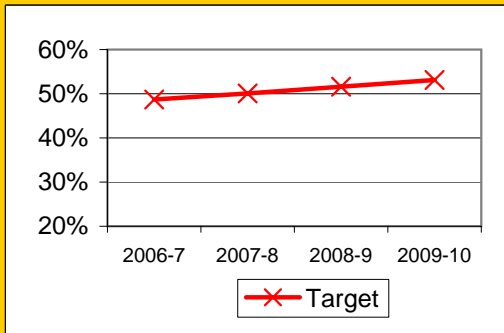
GATE (percent of all GATE students)	Latino		White		All Others	
	Number	Percent	Number	Percent	Number	Percent
2003-4						
2004-5						
2005-6						
2006-7						
2007-8	0	0.0%	1	100.0%	0	0.0%
2008-9	0	0.0%	1	50.0%	1	50.0%
2009-10						



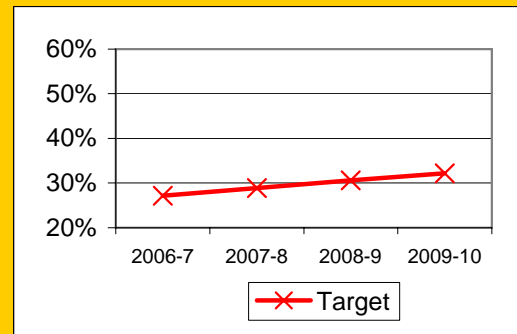
## Progress on English Learners Gaining One Proficiency Level Annually and Attaining English Language Proficiency

	Gained One Level On CELDT		Attained English Proficiency		
	Target	Score	Target	Score	
2003-4					
2004-5					
2005-6					
2006-7	48.7%		27.2%		New Norms
2007-8	50.1%		28.9%		
2008-9	51.6%		30.6%		
2009-10	53.1%		32.2%		

Gained One Level On CELDT

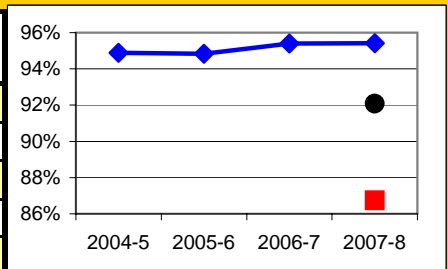


Attained English Proficiency



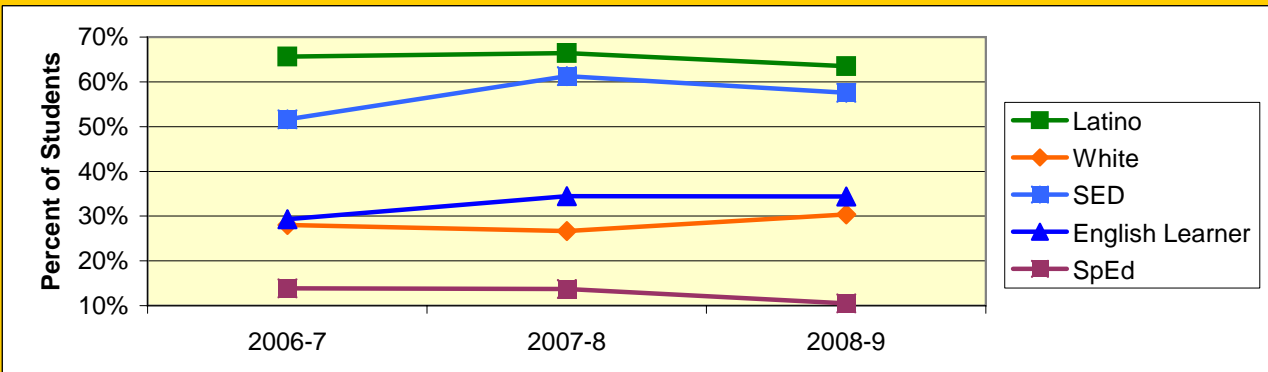
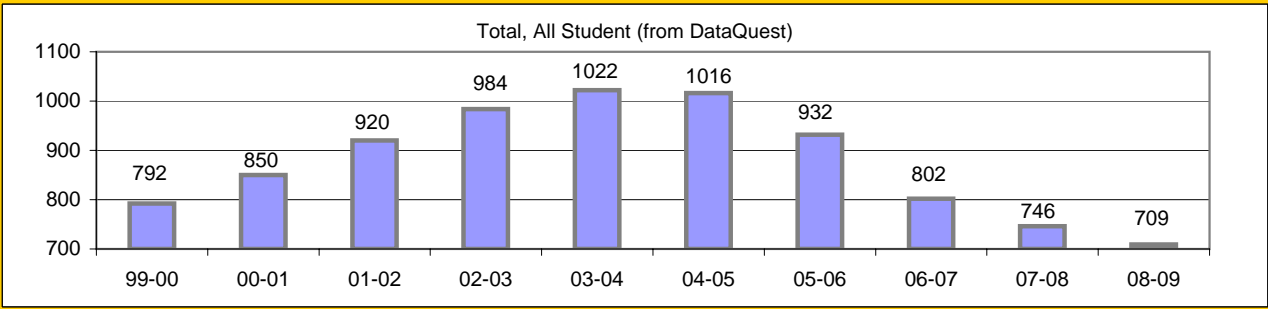
## Increase Efforts to Enhance Revenue

Attendance (Percent over year)	Lowest Month	Whole Year	District
2004-5			94.9%
2005-6			94.8%
2006-7			95.4%
2007-8	86.7%	92.1%	95.4%
2008-9			



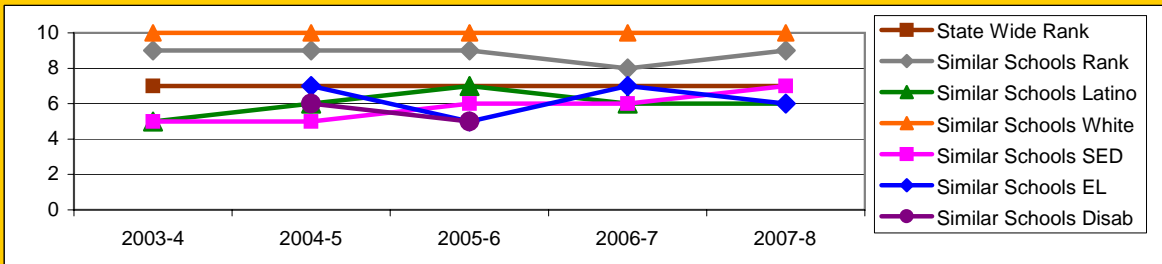
# Board Focus Goals: Santa Barbara Junior High (5) - September 2009

Demographics (7-8, 0809 Aeries)	Total	Female	Male	Latino	White	SED	English Learner	SpEd
Number	704	328	376	447	214	405	242	74
Percent of Total		46.6%	53.4%	63.5%	30.4%	57.5%	34.4%	10.5%



## Achieve a State Similar School Ranking of 8 or Higher (scale = 1-10)

	State Wide Rank	Similar Schools Rank	Similar Schools Latino	Similar Schools White	Similar Schools SED	Similar Schools EL	Similar Schools Disab
2003-4	7	9	5	10	5	NA	NA
2004-5	7	9	6	10	5	7	6
2005-6	7	9	7	10	6	5	5
2006-7	7	8	6	10	6	7	NA
2007-8	7	9	6	10	7	6	NA

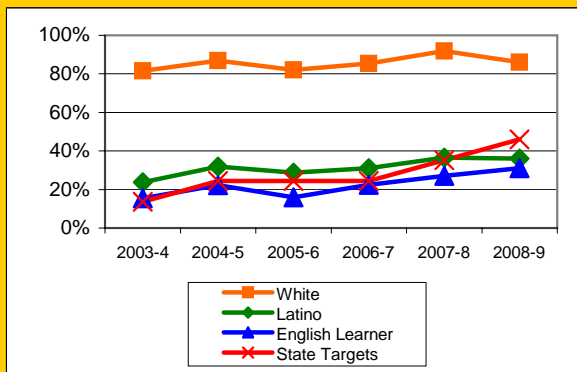


**Exceed Federal Adequate Yearly Progress (AYP) Accountability Goals** (Blue = Not enough students, Bold/underline/italic = Made by adjustment, Red = Did not pass

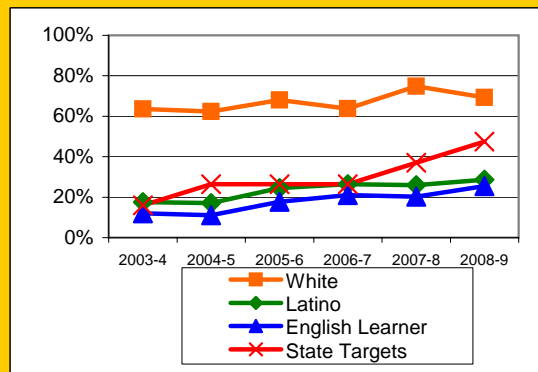
English Language Arts (ELA): Percent Proficient or Higher (based on CST exams)	State Targets	Schoolwide	Latino	White	Socio-Econ Disadv	English Learner	Stud with Disab	
2003-4	13.6%	45.8%	23.7%	81.6%	21.7%	15.5%	6.0%	Mark 2
2004-5	24.4%	51.3%	31.9%	86.8%	30.1%	<u>22.3%</u>	4.1%	PI Y1
2005-6	24.4%	48.3%	28.8%	82.1%	27.0%	16.0%	5.6%	PI Y2
2006-7	24.4%	48.9%	31.1%	85.4%	28.6%	<u>22.5%</u>	4.2%	PI Y3
2007-8	35.2%	54.5%	36.6%	91.8%	36.7%	27.0%	11.0%	PI Y4
2008-9	46.0%	53.3%	36.1%	86.1%	36.9%	31.0%	15.8%	PI Y5
State Averages 2-12, 2008-09		52.4%	39.2%	70.3%	38.6%	33.5%	30.7%	
2009-10	56.8%							PI Y5

Math: Percent Proficient or Higher (Based on CST exams)	State Targets	Schoolwide	Latino	White	Socio-Econ Disadv	English Learner	Stud with Disab	
2003-4	16.0%	35.3%	17.5%	63.6%	15.8%	12.0%	4.3%	Mark 2
2004-5	26.5%	33.1%	17.1%	62.4%	16.0%	11.1%	3.3%	PI Y1
2005-6	26.5%	40.3%	<u>24.6%</u>	68.1%	<u>24.5%</u>	17.7%	4.7%	PI Y2
2006-7	26.5%	39.2%	26.5%	63.8%	25.6%	21.0%	9.4%	PI Y3
2007-8	37.0%	41.8%	25.9%	74.9%	26.8%	20.2%	7.8%	PI Y4
2008-9	47.5%	42.3%	28.7%	69.3%	28.7%	25.4%	11.0%	PI Y5
State Averages 2-12, 2008-09		54.5%	44.0%	67.6%	43.9%	43.0%	32.3%	
2009-10	58.0%							PI Y5

ELA

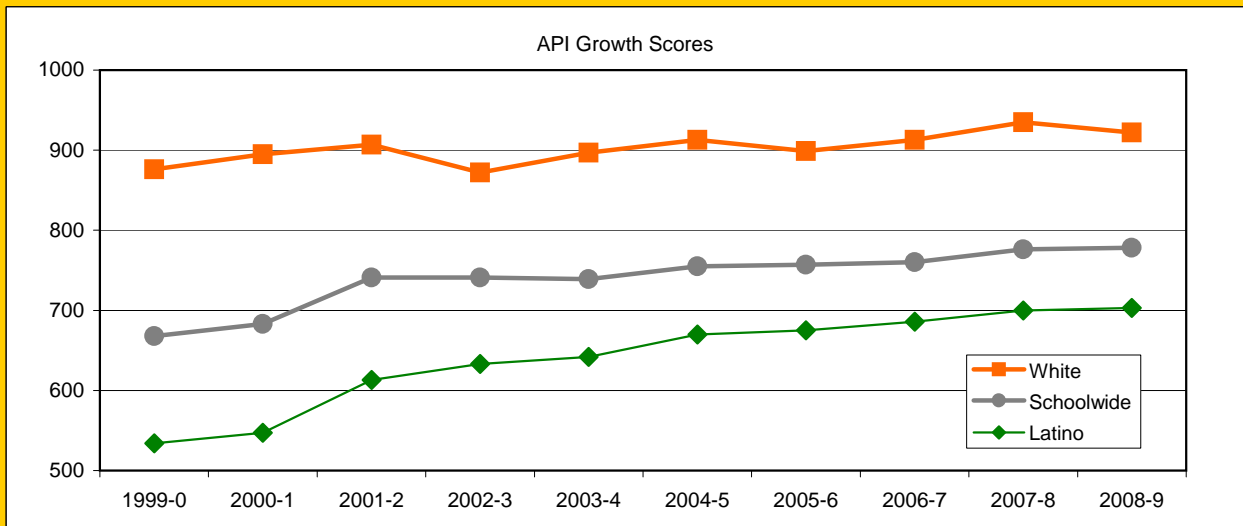


Math



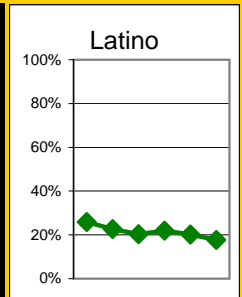
### Exceed State Academic Performance Index (API) Growth Goals

	Schoolwide			Latino			White		
	Base	Growth/ Goal Met	State API (7-8)	Base	Growth/ Goal Met	State API (7-8)	Base	Growth/ Goal Met	State API (7-8)
2003-4	746	739 NotMet		637	642 Met		878	897 Met	
2004-5	738	755 Met		643	670 Met		894	913 Met	
2005-6	755	757 Met	715	670	675 Met	642	913	899 Met	805
2006-7	763	760 NotMet	720	681	686 NotMet	651	901	913 Met	807
2007-8	760	776 Met	735	686	700 Met	669	913	935 Met	818
2008-9	791	778 NotMet	754	717	703 NotMet	690	941	922 Met	833



### Increase Participation Across Demographic Spectrum in Advanced Courses

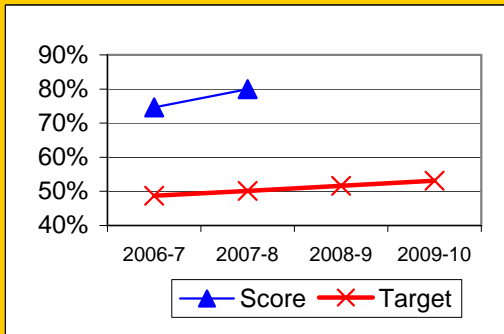
GATE (percent of all GATE students)	Latino		White		All Others	
	Number	Percent	Number	Percent	Number	Percent
2003-4	46	25.8%	120	67.4%	12	6.7%
2004-5	55	22.6%	169	69.5%	19	7.8%
2005-6	43	20.4%	150	71.1%	18	8.5%
2006-7	31	22.0%	91	64.5%	19	13.5%
2007-8	29	20.1%	97	67.4%	18	12.5%
2008-9	22	17.7%	92	74.2%	10	8.1%
2009-10						



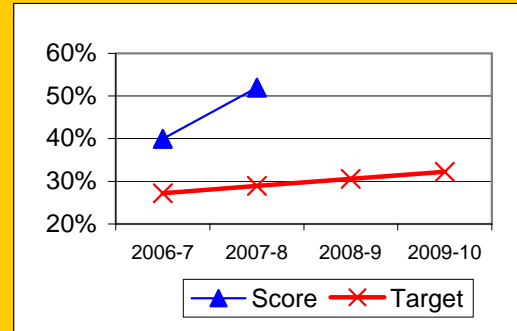
## Progress on English Learners Gaining One Proficiency Level Annually and Attaining English Language Proficiency

	Gained One Level On CELDT		Attained English Proficiency		
	Target	Score	Target	Score	
2003-4	51.0%		30.0%		
2004-5	51.5%	84.9%	30.7%	68.3%	
2005-6	52.0%	82.4%	31.4%	63.9%	
2006-7	48.7%	74.6%	27.2%	40.0%	New Norms
2007-8	50.1%	80.0%	28.9%	52.0%	
2008-9	51.6%		30.6%		
2009-10	53.1%		32.2%		

Gained One Level On CELDT

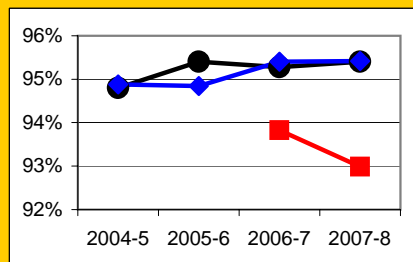


Attained English Proficiency



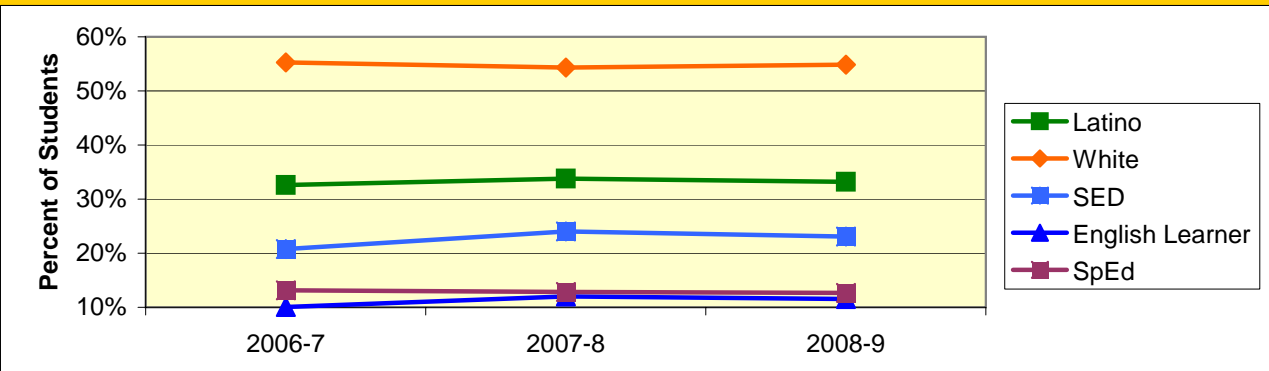
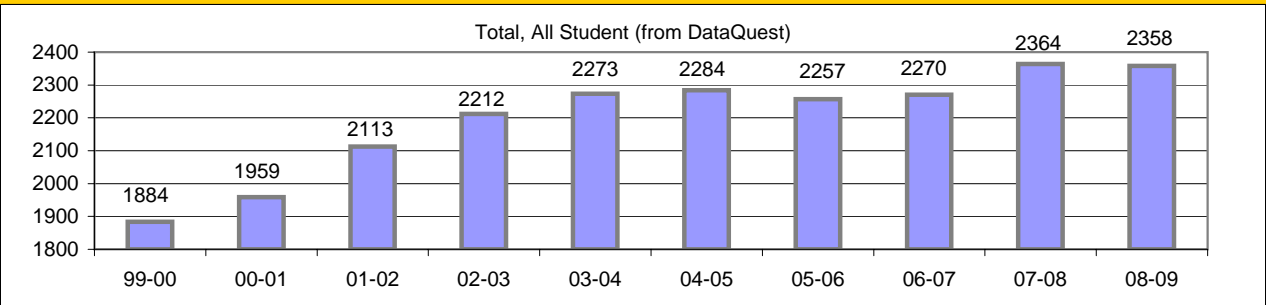
## Increase Efforts to Enhance Revenue

Attendance (Percent over year)	Lowest Month	Whole Year	District
		94.8%	94.9%
		95.4%	94.8%
	93.8%	95.3%	95.4%
	93.0%	95.4%	95.4%



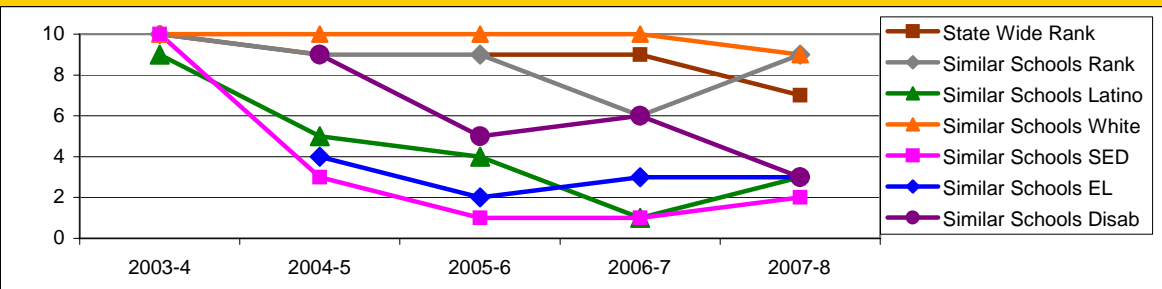
## Board Focus Goals: Dos Pueblos High School (7) - September 2009

Demographics (7-8, 0809 Aeries)	Total	Female	Male	Latino	White	SED	English Learner	SpEd
Number	2338	1124	1214	776	1282	540	270	296
Percent of Total		48.1%	51.9%	33.2%	54.8%	23.1%	11.5%	12.7%



### Achieve a State Similar School Ranking of 8 or Higher (scale = 1-10)

	State Wide Rank	Similar Schools Rank	Similar Schools Latino	Similar Schools White	Similar Schools SED	Similar Schools EL	Similar Schools Disab
2003-4	10	10	9	10	10	NA	NA
2004-5	9	9	5	10	3	4	9
2005-6	9	9	4	10	1	2	5
2006-7	9	6	1	10	1	3	6
2007-8	7	9	3	9	2	3	3



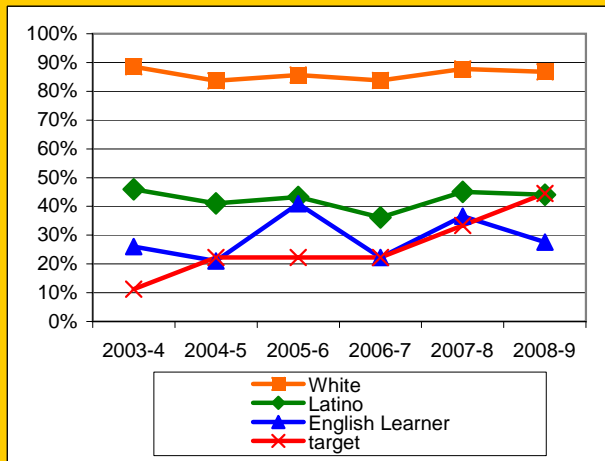
**Exceed Federal Adequate Yearly Progress (AYP) Accountability Goals** (Blue = Not enough students, Bold/underline/italic = Made by adjustment, Red = Did not pass

English Language Arts (ELA): Percent Proficient or Higher (Based on 10th grade Exit Exam (CAHSEE), Federal Cut Points)	State Targets	Schoolwide	Latino	White	Socio-Econ Disadv	English Learner	Stud with Disab
2003-4	11.2%	73.1%	45.9%	88.5%	41.0%	26.0%	31.3%
2004-5	22.3%	70.5%	41.0%	83.7%	29.0%	21.0%	17.3%
2005-6	22.3%	71.4%	43.3%	85.6%	31.3%	40.9%	13.8%
2006-7	22.3%	68.9%	36.2%	83.8%	30.6%	22.3%	19.4%
2007-8	33.4%	71.0%	45.1%	87.8%	40.5%	36.6%	19.4%
2008-9	44.5%	72.3%	<u>44.0%</u>	86.8%	38.2%	27.6%	25.6%
State Averages 2-12, 2008-09		52.4%	39.2%	70.3%	38.6%	33.5%	30.7%
2009-10	55.6%						

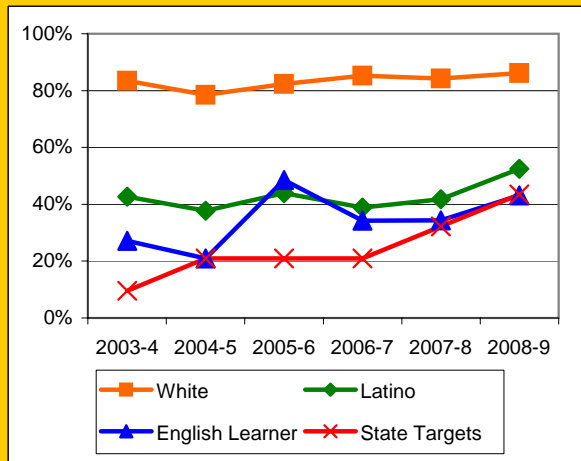
**Mark 1**

Math: Percent Proficient or Higher (Based on 10th grade Exit Exam (CAHSEE), Federal Cut Points)	State Targets	Schoolwide	Latino	White	Socio-Econ Disadv	English Learner	Stud with Disab
2003-4	9.6%	69.6%	42.7%	83.4%	45.0%	27.1%	26.8%
2004-5	20.9%	64.8%	37.7%	78.5%	25.3%	21.0%	17.8%
2005-6	20.9%	70.8%	43.9%	82.3%	42.3%	48.5%	15.8%
2006-7	20.9%	70.5%	38.9%	85.3%	35.3%	34.2%	19.7%
2007-8	32.2%	68.9%	41.8%	84.2%	42.5%	34.4%	21.5%
2008-9	43.5%	75.1%	52.5%	86.2%	49.7%	<u>43.1%</u>	32.1%
State Averages 2-12, 2008-09		54.5%	44.0%	67.6%	43.9%	43.0%	32.3%
2009-10	54.8%						

ELA

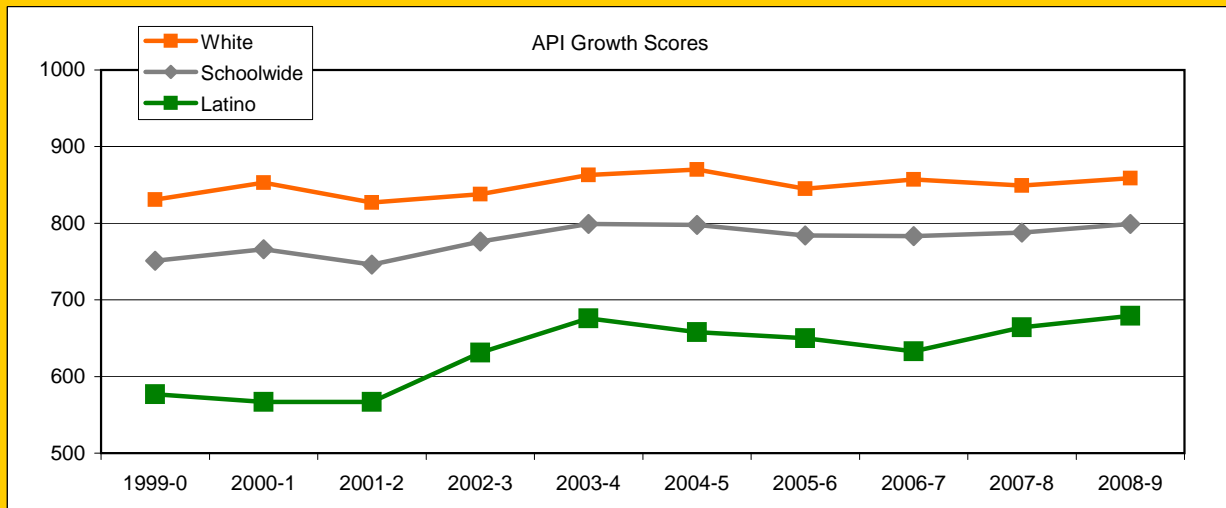


Math



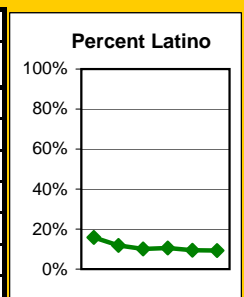
## Exceed State Academic Performance Index (API) Growth Goals

	Schoolwide			Latino			White		
	Base	Growth/ Goal Met	State API (9-11)	Base	Growth/ Goal Met	State API (9-11)	Base	Growth/ Goal Met	State API (9-11)
2003-4	746	799 Met		603	676 Met		807	863 Met	
2004-5	814	798 Not Met		698	658 Not Met		872	870 Met	
2005-6	798	784 Not Met	680	658	650 Not Met	609	870	845 Met	755
2006-7	792	783 Not Met	689	659	633 Not Met	621	851	857 Met	765
2007-8	783	788 Met	702	633	664 Met	638	857	849 Met	776
2008-9	788	799 Met	713	664	679 Met	651	849	859 Met	788



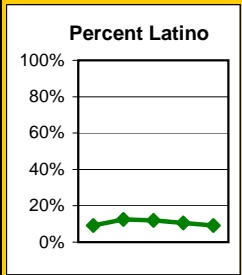
## Increase Participation Across Demographic Spectrum in Advanced Courses

GATE (percent of all GATE students)	Latino		White		All Others	
	Number	Percent	Number	Percent	Number	Percent
2003-4	44	15.9%	194	70.0%	39	14.1%
2004-5	53	11.8%	337	75.1%	59	13.1%
2005-6	61	10.1%	457	75.8%	85	14.1%
2006-7	68	10.6%		0.0%		0.0%
2007-8	62	9.4%	499	75.4%	101	15.3%
2008-9	61	9.2%	493	74.6%	107	16.2%
2009-10						

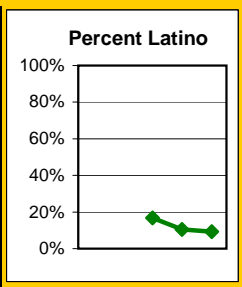


Dos Pueblos High Continued

AP (From SASI and Aeries data; Number of Students)	Latino		White		All Others	
	Number	Percent	Number	Percent	Number	Percent
2003-4	50	9.1%	427	78.1%	70	12.8%
2004-5	70	12.5%	424	75.7%	66	11.8%
2005-6	74	12.0%	449	72.7%	95	15.4%
2006-7	90	10.6%	589	69.2%	172	20.2%
2007-8	50	9.1%	427	78.1%	70	12.8%
2008-9						



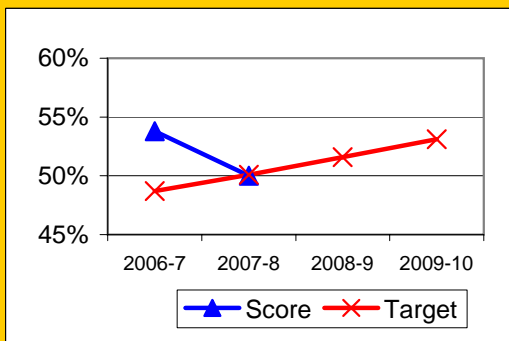
Honors (GATE, SBCC, IB, & AP; Seats, not students)	Latino		White		All Others	
	Number	Percent	Number	Percent	Number	Percent
2003-4						
2004-5						
2005-6	267	16.8%	1108	69.6%	218	13.7%
2006-7	281	10.5%	1930	72.3%	457	17.1%
2007-8	239	9.2%	1888	72.5%	477	18.3%
2008-9						



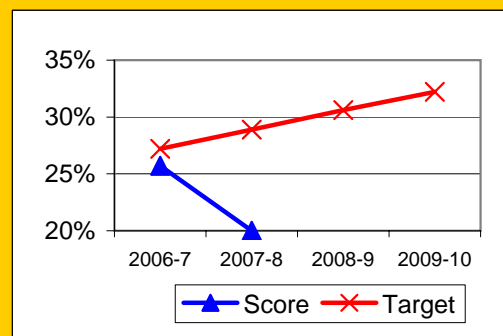
Progress on English Learners Gaining One Proficiency Level Annually and Attaining English Language Proficiency

	Gained One Level On CELDT		Attained English Proficiency		
	Target	Score	Target	Score	
2003-4	51.0%		30.0%		
2004-5	51.5%	71.4%	30.7%	38.2%	
2005-6	52.0%	76.3%	31.4%	37.7%	
2006-7	48.7%	53.8%	27.2%	25.7%	New Norms
2007-8	50.1%	50.0%	28.9%	20.0%	
2008-9	51.6%		30.6%		
2009-10	53.1%		32.2%		

Gained One Level On CELDT



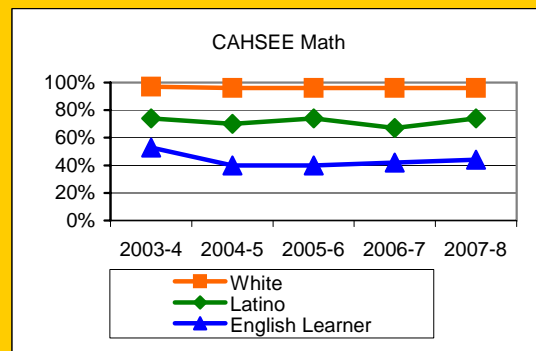
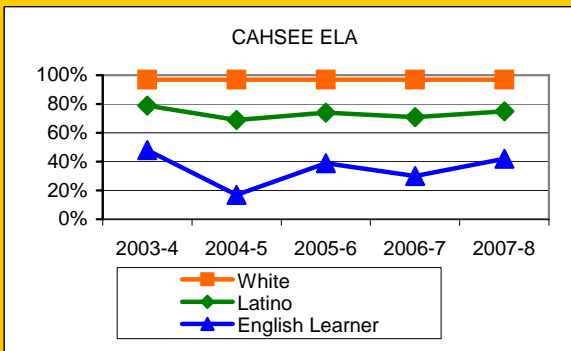
Attained English Proficiency



## Preparing Students to Pass the High School Exit Exam (CAHSEE)

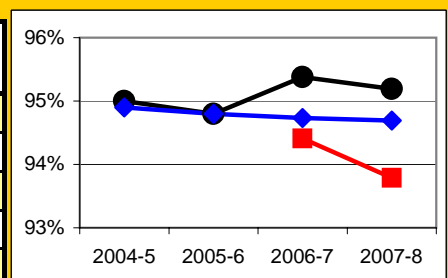
English Language Arts (ELA), March and May in that year, 10th grade only, California	Schoolwide						
	Latino	White	Socio-Econ Disadv	English Learner	Stud with Disab		
2003-4	90.0%	79.0%	97.0%	75.0%	48.0%	58.0%	
2004-5	88.0%	69.0%	97.0%	62.0%	17.0%	54.0%	
2005-6	89.0%	74.0%	97.0%	68.0%	39.0%	51.0%	
2006-7	89.0%	71.0%	97.0%	66.0%	30.0%	50.0%	
2007-8	89.0%	75.0%	97.0%	71.0%	42.0%	48.0%	
2008-9							

Math, all exams in that year, California cut points (dataquest)	Schoolwide						
	Latino	White	Socio-Econ Disadv	English Learner	Stud with Disab		
2003-4	89.0%	74.0%	97.0%	75.0%	53.0%	51.0%	
2004-5	87.0%	70.0%	96.0%	62.0%	40.0%	57.0%	
2005-6	88.0%	74.0%	96.0%	62.0%	40.0%	38.0%	
2006-7	87.0%	67.0%	96.0%	67.0%	42.0%	39.0%	
2007-8	88.0%	74.0%	96.0%	71.0%	44.0%	43.0%	
2008-9							



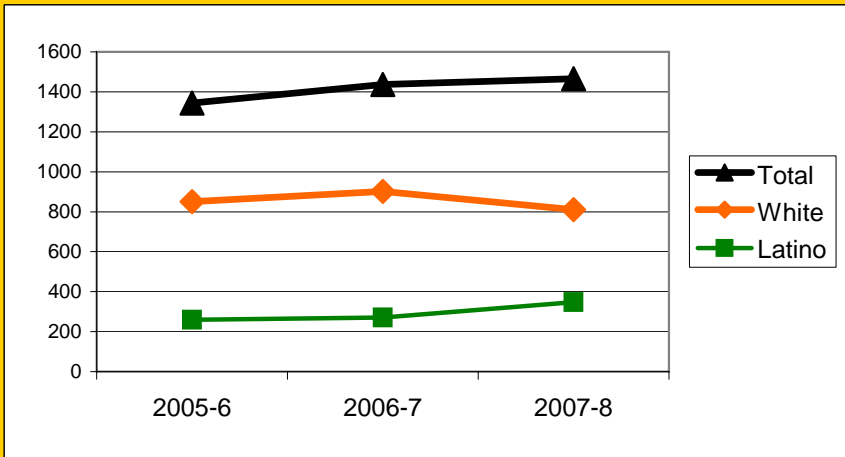
## Increase Efforts to Enhance Revenue

Attendance (Percent over year)	Lowest Month	Whole Year	District
2004-5		95.0%	94.9%
2005-6		94.8%	94.8%
2006-7	94.4%	95.4%	94.7%
2007-8	93.8%	95.2%	94.7%
2008-9			



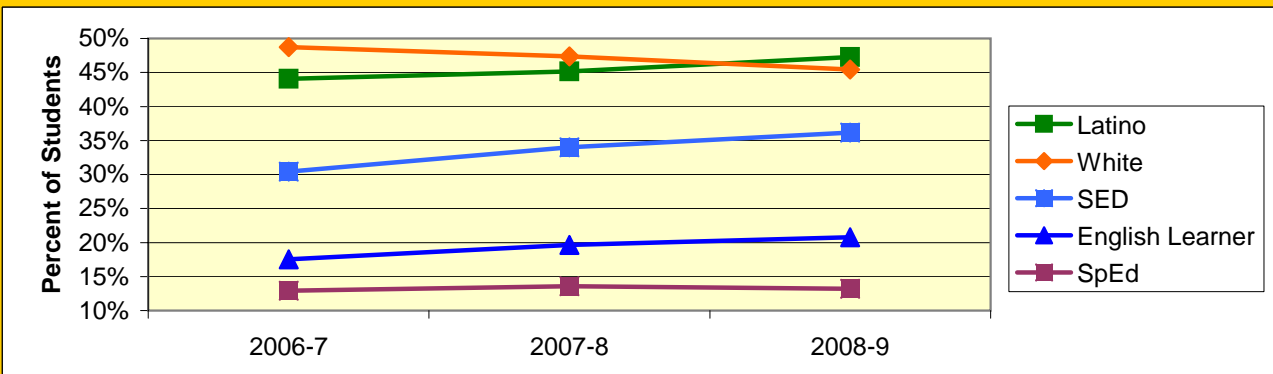
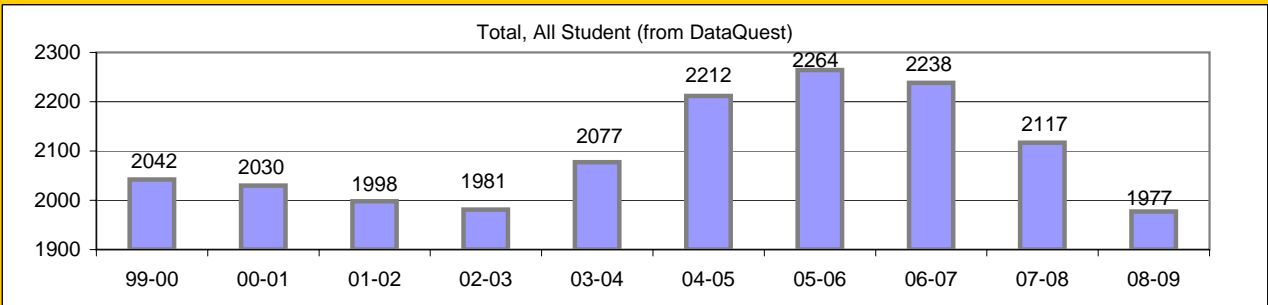
### Students Taking Course at Santa Barbara City College

Unduplicated Students: Fall + Spring + Summer	Latino	White	Total
2005-6	260	850	1344
2006-7	271	901	1436
2007-8	347	810	1465
2008-9			



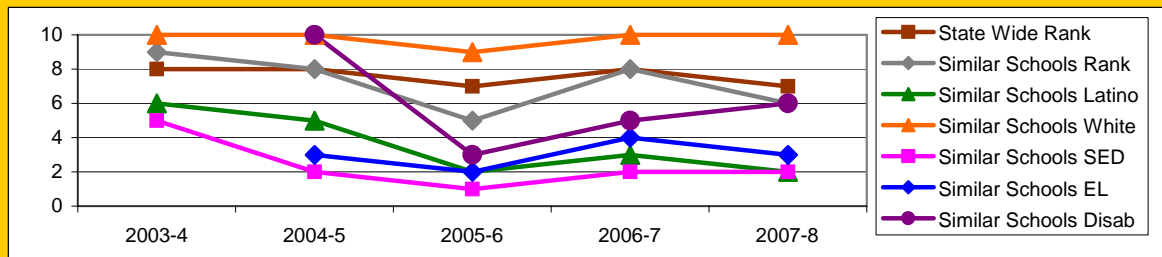
## Board Focus Goals: San Marcos High School (3) - September 2009

Demographics (7-8, 0809 Aeries)	Total	Female	Male	Latino	White	SED	English Learner	SpEd
Number	1920	936	984	908	872	694	399	253
Percent of Total		48.8%	51.3%	47.3%	45.4%	36.1%	20.8%	13.2%



### Achieve a State Similar School Ranking of 8 or Higher (scale = 1-10)

	State Wide Rank	Similar Schools Rank	Similar Schools Latino	Similar Schools White	Similar Schools SED	Similar Schools EL	Similar Schools Disab
2003-4	8	9	6	10	5	NA	NA
2004-5	8	8	5	10	2	3	10
2005-6	7	5	2	9	1	2	3
2006-7	8	8	3	10	2	4	5
2007-8	7	6	2	10	2	3	6

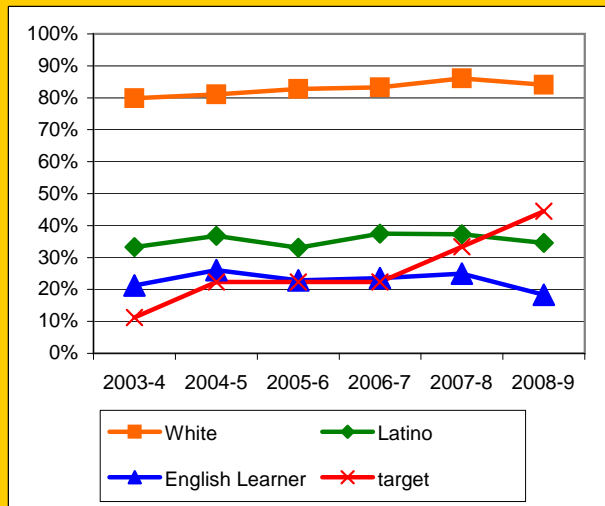


**Exceed Federal Adequate Yearly Progress (AYP) Accountability Goals** (Blue = Not enough students, Bold/underline/italic = Made by adjustment, Red = Did not pass

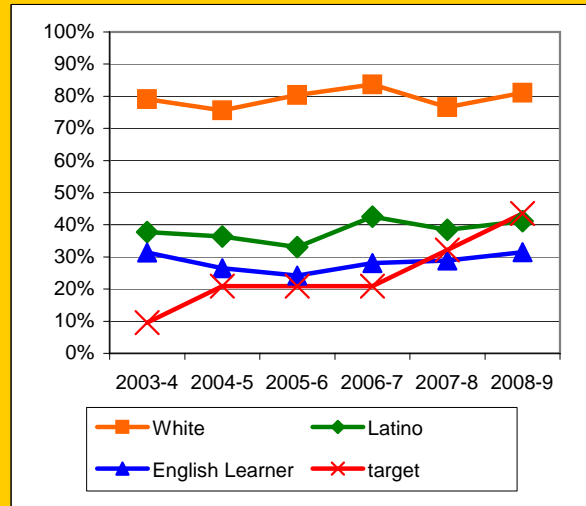
English Language Arts (ELA): Percent Proficient or Higher (Based on 10th grade Exit Exam (CAHSEE), Federal Cut Points)	State Targets	Schoolwide	Latino	White	Socio-Econ Disadv	English Learner	Stud with Disab	
2003-4	11.2%	61.3%	33.3%	79.9%	30.5%	21.2%	20.6%	
2004-5	22.3%	62.0%	36.8%	81.1%	30.7%	26.1%	37.7%	
2005-6	22.3%	60.0%	33.1%	82.8%	28.4%	22.8%	5.3%	
2006-7	22.3%	61.5%	37.5%	83.3%	32.2%	23.5%	19.7%	
2007-8	33.4%	65.4%	37.3%	86.1%	35.3%	25.0%	35.3%	Mark 1
2008-9	44.5%	60.2%	34.6%	84.1%	35.8%	18.3%	17.7%	Mark 2
State Averages 2-12, 2008-09		52.4%	39.2%	70.3%	38.6%	33.5%	30.7%	
2009-10	55.6%							PI Y1

Math: Percent Proficient or Higher (Based on 10th grade Exit Exam (CAHSEE), Federal Cut Points)	State Targets	Schoolwide	Latino	White	Socio-Econ Disadv	English Learner	Stud with Disab	
2003-4	9.6%	62.2%	37.7%	79.1%	37.5%	31.4%	22.2%	
2004-5	20.9%	59.5%	36.4%	75.6%	31.7%	26.5%	30.0%	
2005-6	20.9%	59.0%	33.1%	80.4%	30.4%	24.2%	7.3%	
2006-7	20.9%	64.3%	42.5%	83.7%	38.7%	28.1%	17.9%	
2007-8	32.2%	61.2%	38.4%	76.6%	38.7%	28.9%	30.9%	Mark 1
2008-9	43.5%	62.2%	41.1%	81.1%	41.3%	31.5%	19.4%	Mark 2
State Averages 2-12, 2008-09		54.5%	44.0%	67.6%	43.9%	43.0%	32.3%	
2009-10	54.8%							PI Y1

ELA

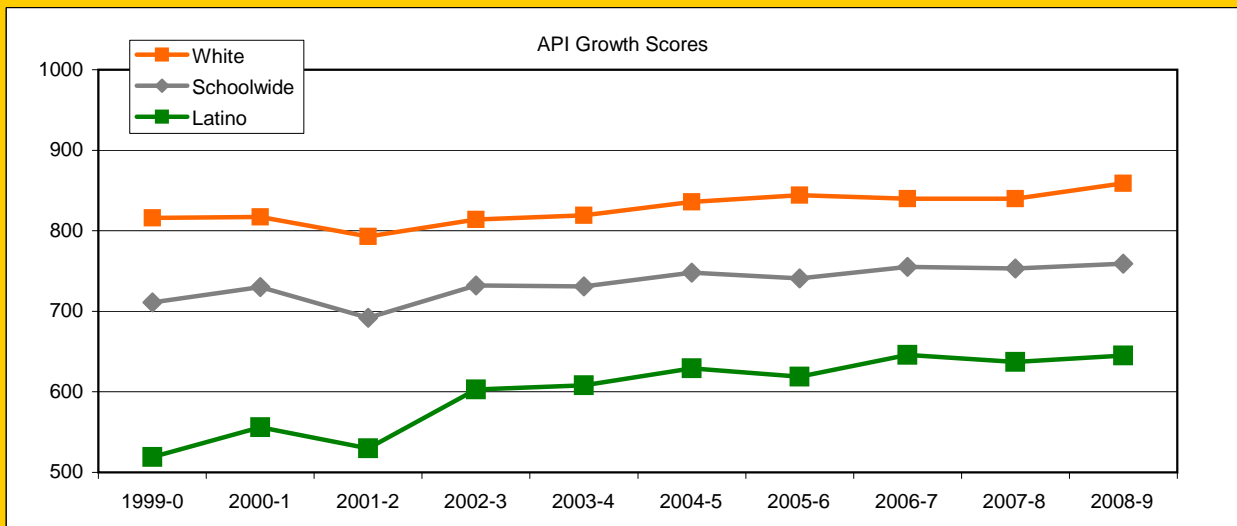


Math



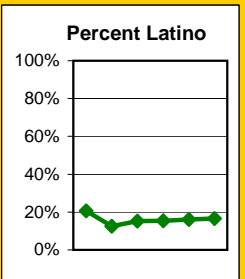
### Exceed State Academic Performance Index (API) Growth Goals

	Schoolwide			Latino			White		
	Base	Growth/ Goal Met	State API (9-11)	Base	Growth/ Goal Met	State API (9-11)	Base	Growth/ Goal Met	State API (9-11)
2003-4	717	731 Met		583	608 Met		805	819 Met	
2004-5	741	748 Met		624	629 Met		825	836 Met	
2005-6	749	741 NotMet	680	629	619 NotMet	609	836	844 Met	755
2006-7	727	755 Met	689	608	646 Met	621	826	840 Met	765
2007-8	755	753 NotMet	702	646	637 NotMet	638	840	840 Met	776
2008-9	753	759 Met	713	637	645 Met	651	840	859 Met	788



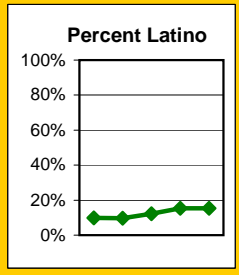
### Increase Participation Across Demographic Spectrum in Advanced Courses

GATE (percent of all GATE students)	Latino		White		All Others	
	Number	Percent	Number	Percent	Number	Percent
2003-4	56	20.7%	194	71.6%	21	7.7%
2004-5	53	12.4%	328	77.0%	45	10.6%
2005-6	88	15.3%	434	75.2%	55	9.5%
2006-7	88	15.5%	425	74.7%	56	9.8%
2007-8	85	16.1%	390	73.7%	54	10.2%
2008-9	82	16.6%	361	73.2%	50	10.1%
2009-10						

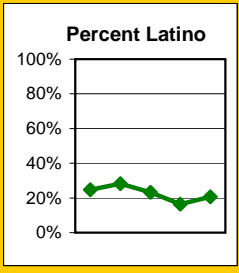


San Marcos High Continued

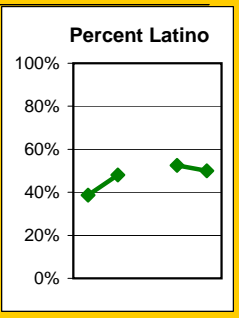
GATE (Seats in GATEclasses)	Latino		White		All Others	
	Number	Percent	Number	Percent	Number	Percent
2003-4	172	9.8%	1438	81.8%	149	8.5%
2004-5	200	9.7%	1643	79.4%	225	10.9%
2005-6	258	12.3%	1637	77.8%	209	9.9%
2006-7	164	15.3%	796	74.2%	113	10.5%
2007-8	161	15.4%	774	74.0%	111	10.6%
2008-9						



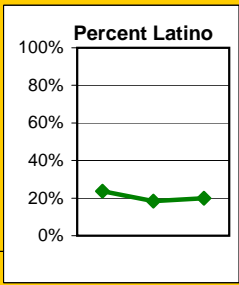
AP (From SASI and Aeries data; Number of Students)	Latino		White		All Others	
	Number	Percent	Number	Percent	Number	Percent
2003-4	165	24.7%	447	66.8%	57	8.5%
2004-5	201	28.2%	447	62.8%	64	9.0%
2005-6	163	23.3%	461	66.0%	75	10.7%
2006-7	118	16.5%	511	71.7%	84	11.8%
2007-8	169	20.6%	553	67.4%	98	12.0%
2008-9						



Academies-Latino (Health Careers; Seats 04-06, students 07-09)	Latino		White		All Others	
	Number	Percent	Number	Percent	Number	Percent
2003-4						
2004-5	77	38.7%	96	48.2%	26	13.1%
2005-6	127	48.1%	112	42.4%	25	9.5%
2006-7						
2007-8	42	52.5%	31	38.8%	7	8.8%
2008-9	44	50.0%	36	40.9%	8	9.1%
2009-10						



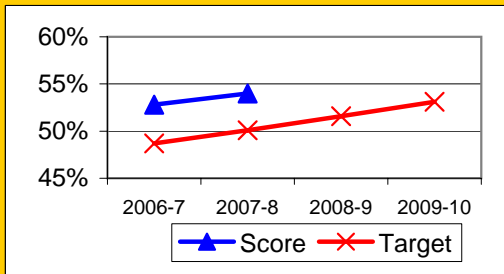
Honors (GATE, SBCC, IB, & AP; Seats, not students)	Latino		White		All Others	
	Number	Percent	Number	Percent	Number	Percent
2003-4						
2004-5						
2005-6	187	23.6%	520	65.6%	86	10.8%
2006-7	435	18.4%	1678	70.8%	256	10.8%
2007-8	516	19.9%	1784	68.8%	293	11.3%
2008-9						



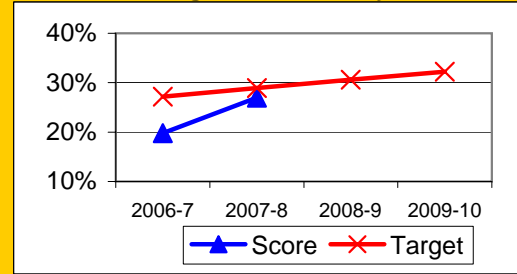
## Progress on English Learners Gaining One Proficiency Level Annually and Attaining English Language Proficiency

	Gained One Level On CELDT		Attained English Proficiency		
	Target	Score	Target	Score	
2003-4	51.0%		30.0%		
2004-5	51.5%	72.0%	30.7%	37.9%	
2005-6	52.0%	74.9%	31.4%	47.2%	
2006-7	48.7%	52.8%	27.2%	19.8%	New Norms
2007-8	50.1%	54.0%	28.9%	27.0%	
2008-9	51.6%		30.6%		
2009-10	53.1%		32.2%		

Gained One Level On CELDT



Attained English Proficiency

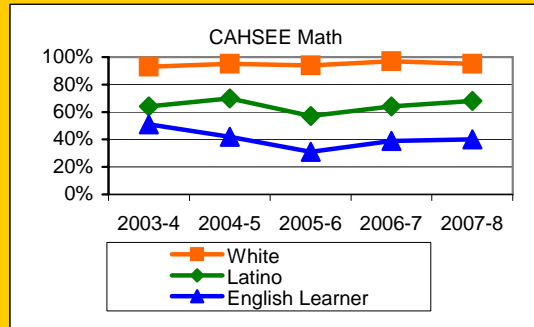
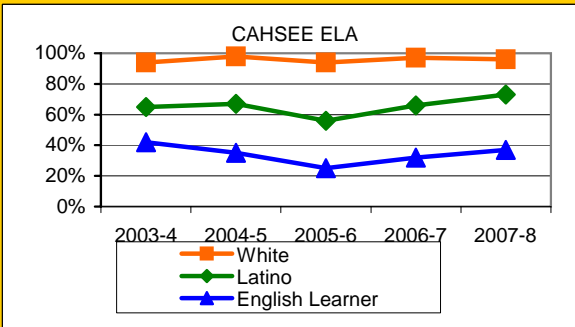


## Preparing Students to Pass the High School Exit Exam (CAHSEE)

English Language Arts (ELA), March and May in that year, 10th grade only, California cut points (dataquest)	Schoolwide	Latino	White	Socio-Econ Disadv	English Learner	Stud with Disab
2003-4	82.0%	65.0%	94.0%	63.0%	42.0%	41.0%
2004-5	84.0%	67.0%	98.0%	56.0%	35.0%	52.0%
2005-6	76.0%	56.0%	94.0%	45.0%	25.0%	23.0%
2006-7	82.0%	66.0%	97.0%	60.0%	32.0%	44.0%
2007-8	86.0%	73.0%	96.0%	70.0%	37.0%	56.0%
2008-9						

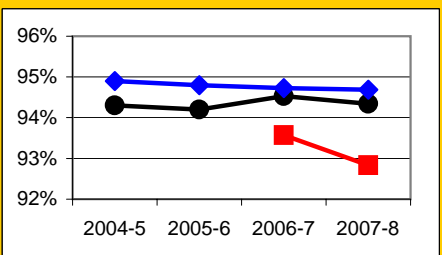
Math, all exams in that year, California cut points (dataquest)	Schoolwide	Latino	White	Socio-Econ Disadv	English Learner	Stud with Disab
2003-4	81.0%	64.0%	93.0%	62.0%	51.0%	32.0%
2004-5	85.0%	70.0%	95.0%	59.0%	42.0%	45.0%
2005-6	77.0%	57.0%	94.0%	50.0%	31.0%	16.0%
2006-7	82.0%	64.0%	97.0%	60.0%	39.0%	39.0%
2007-8	83.0%	68.0%	95.0%	64.0%	40.0%	44.0%
2008-9						

**San Marcos High Continued**



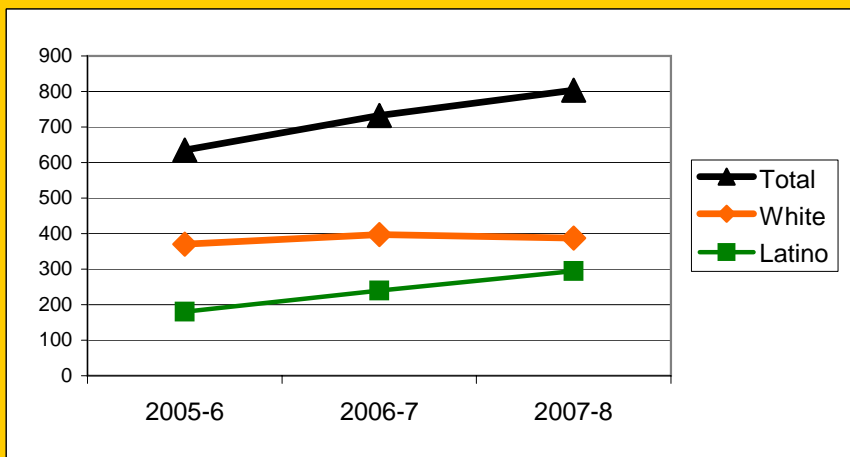
**Increase Efforts to Enhance Revenue**

Attendance (Percent over year)	Lowest Month	Whole Year	District
2004-5		94.3%	94.9%
2005-6		94.2%	94.8%
2006-7	93.6%	94.5%	94.7%
2007-8	92.8%	94.3%	94.7%
2008-9			



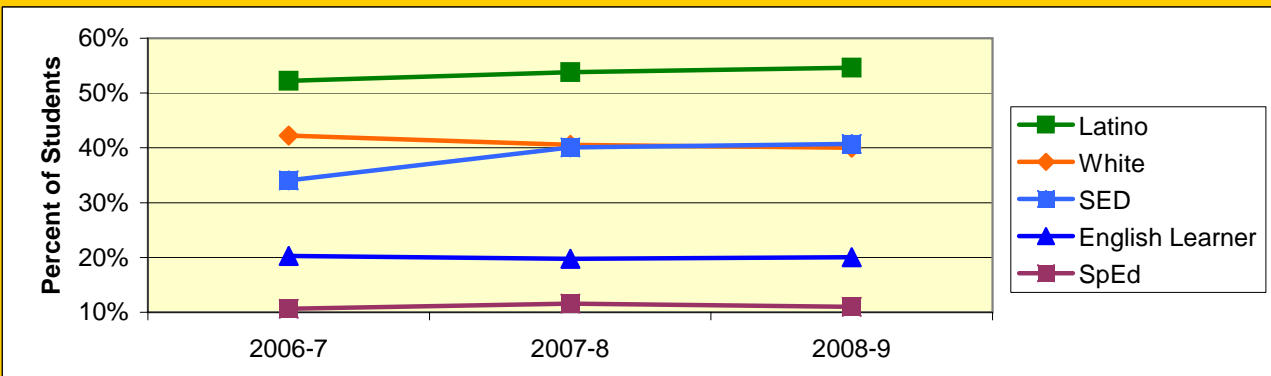
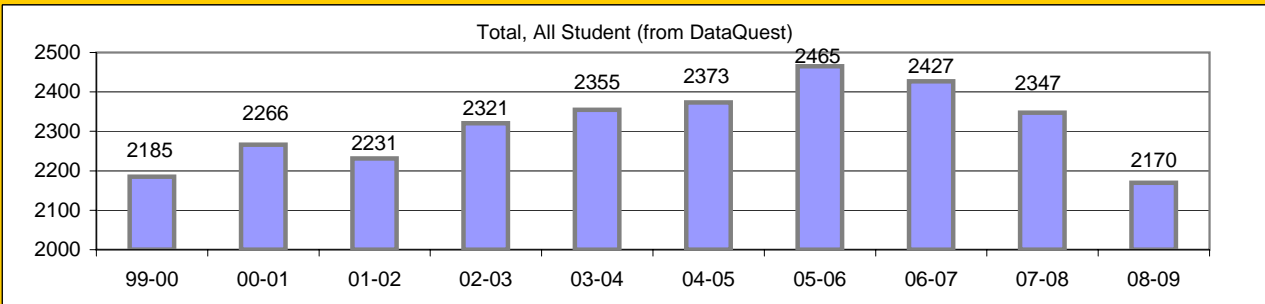
**Students Taking Course at Santa Barbara City College**

Unduplicated Students: Fall + Spring + Summer	Latino	White	Total
2005-6	180	370	635
2006-7	240	397	732
2007-8	295	387	804
2008-9			



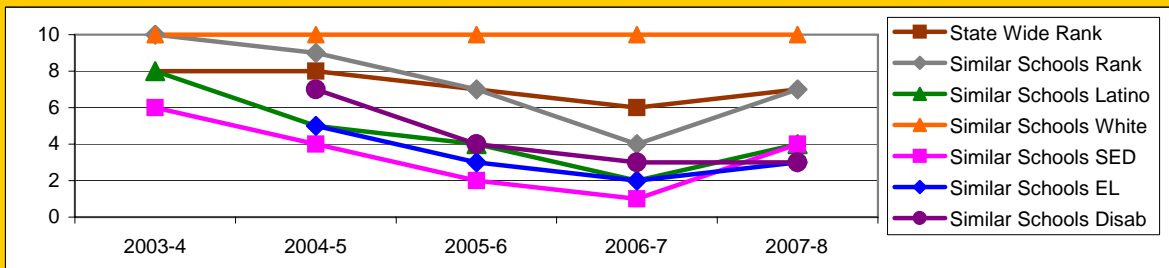
## Board Focus Goals: Santa Barbara High School (4) - Sept. 2009

Demographics (7-8, 0809 Aeries)	Total	Female	Male	Latino	White	SED	English Learner	SpEd
Number	2093	1043	1050	1143	838	852	419	230
Percent of Total		49.8%	50.2%	54.6%	40.0%	40.7%	20.0%	11.0%



### Achieve a State Similar School Ranking of 8 or Higher (scale = 1-10)

	State Wide Rank	Similar Schools Rank	Similar Schools Latino	Similar Schools White	Similar Schools SED	Similar Schools EL	Similar Schools Disab
2003-4	8	10	8	10	6	NA	NA
2004-5	8	9	5	10	4	5	7
2005-6	7	7	4	10	2	3	4
2006-7	6	4	2	10	1	2	3
2007-8	7	7	4	10	4	3	3



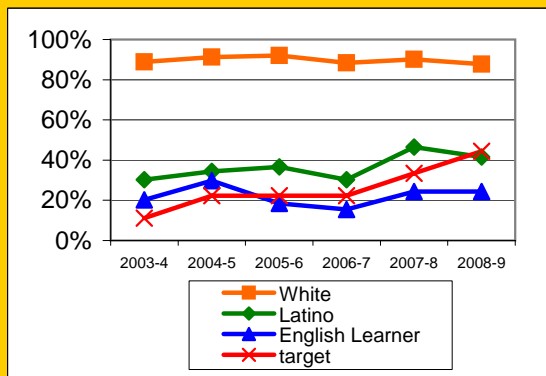
### Exceed Federal Adequate Yearly Progress (AYP) Accountability Goals (Blue = Not enough students, Bold/underline/italic = Made by adjustment, Red = Did not pass

enough students, Bold/underline/italic = Made by adjustment, Red = Did not pass

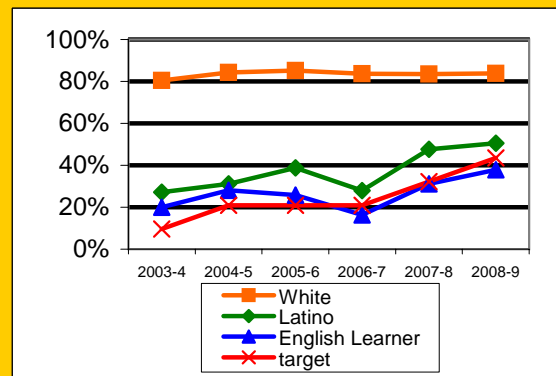
English Language Arts (ELA): Percent Proficient or Higher (Based on 10th grade Exit Exam (CAHSEE), Federal Cut Points)	State Targets	Schoolwide	Latino	White	Socio-Econ Disadv	English Learner	Stud with Disab	
2003-4	11.2%	60.2%	30.3%	88.8%	23.3%	20.3%	16.3%	
2004-5	22.3%	60.2%	34.4%	91.2%	30.4%	29.8%	14.5%	
2005-6	22.3%	63.0%	36.6%	92.0%	28.2%	<u>18.4%</u>	10.2%	
2006-7	22.3%	56.7%	30.3%	88.4%	27.1%	15.4%	10.9%	Mark 1
2007-8	33.4%	67.5%	46.5%	90.2%	43.0%	24.4%	7.0%	Mark 2
2008-9	44.5%	62.3%	41.5%	87.7%	40.4%	24.3%	8.0%	PI Y1
State Averages 2-12, 2008-09		52.4%	39.2%	70.3%	38.6%	33.5%	30.7%	
2009-10	55.6%							PI Y2

Math: Percent Proficient or Higher (Based on 10th grade Exit Exam (CAHSEE), Federal Cut Points)	State Targets	Schoolwide	Latino	White	Socio-Econ Disadv	English Learner	Stud with Disab	
2003-4	9.6%	54.5%	27.2%	80.5%	23.4%	20.0%	8.0%	
2004-5	20.9%	55.8%	31.1%	84.2%	28.4%	28.1%	10.5%	
2005-6	20.9%	60.9%	38.8%	85.2%	29.6%	25.8%	10.6%	
2006-7	20.9%	53.0%	28.0%	83.6%	26.5%	<u>16.4%</u>	12.3%	
2007-8	32.2%	64.6%	47.7%	83.5%	46.6%	31.1%	12.5%	Mark 1
2008-9	43.5%	65.7%	50.5%	83.8%	48.7%	37.8%	13.7%	PI Y1
State Averages 2-12, 2008-09		54.5%	44.0%	67.6%	43.9%	43.0%	32.3%	
2009-10	54.8%							PI Y2

ELA

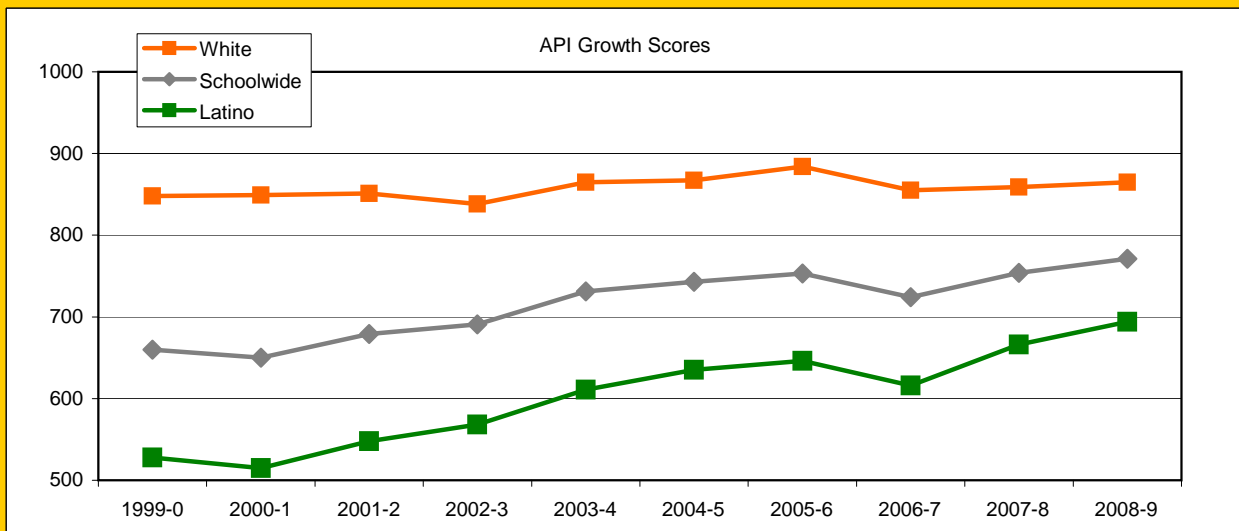


Math



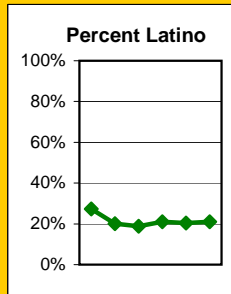
Santa Barbara High Continued  
**Exceed State Academic Performance Index (API) Growth Goals**

	Schoolwide			Latino			White		
	Base	Growth/ Goal Met	State API (9-11)	Base	Growth/ Goal Met	State API (9-11)	Base	Growth/ Goal Met	State API (9-11)
<b>2003-4</b>	666	731 Met		543	611 Met		817	865 Met	
<b>2004-5</b>	739	743 Met		621	635 Met		869	867 Met	
<b>2005-6</b>	743	753 Met	680	635	646 Met	609	868	884 Met	755
<b>2006-7</b>	737	724 NotMet	689	630	616 NotMet	621	866	855 Met	765
<b>2007-8</b>	724	754 Met	702	616	666 Met	638	855	859 Met	776
<b>2008-9</b>	754	771 Met	713	666	694 Met	651	859	865 Met	788



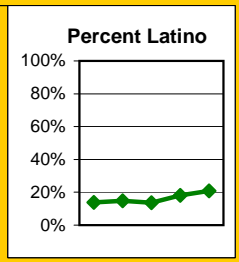
**Increase Participation Across Demographic Spectrum in Advanced Courses**

GATE (percent of all GATE students)	Latino		White		All Others	
	Number	Percent	Number	Percent	Number	Percent
2003-4	78	27.4%	186	65.3%	21	7.4%
2004-5	98	20.1%	353	72.5%	36	7.4%
2005-6	112	18.8%	442	74.0%	43	7.2%
2006-7	124	21.0%	424	71.9%	42	7.1%
2007-8	114	20.4%	401	71.6%	45	8.0%
2008-9	104	21.0%	350	70.6%	42	8.5%
2009-10						

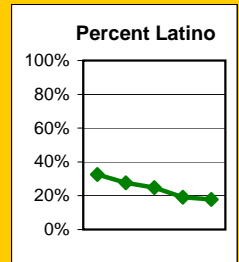


Santa Barbara High Continued

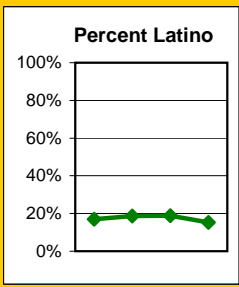
GATE (Seats in GATEclasses)	Latino		White		All Others	
	Number	Percent	Number	Percent	Number	Percent
2003-4	257	13.9%	1444	77.8%	154	8.3%
2004-5	340	14.8%	1774	77.4%	179	7.8%
2005-6	318	13.6%	1858	79.7%	156	6.7%
2006-7	184	18.1%	765	75.2%	68	6.7%
2007-8	209	20.8%	723	72.1%	71	7.1%
2008-9						



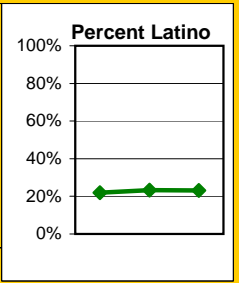
AP (From SASI and Aeries data; Number of Students)	Latino		White		All Others	
	Number	Percent	Number	Percent	Number	Percent
2003-4	163	32.5%	303	60.5%	35	7.0%
2004-5	140	27.7%	324	64.0%	42	8.3%
2005-6	147	24.9%	395	66.8%	49	8.3%
2006-7	185	19.1%	720	74.2%	65	6.7%
2007-8	176	17.8%	742	75.1%	70	7.1%
2008-9						



Academies (MAD, VADA, Green; Seats, not students; Fall last 2 years)	Latino		White		All Others	
	Number	Percent	Number	Percent	Number	Percent
2003-4						
2004-5	226	16.9%	1025	76.8%	83	6.2%
2005-6	344	18.7%	1383	75.1%	114	6.2%
2006-7	151	18.9%	621	77.9%	25	3.1%
2007-8	126	15.3%	665	80.9%	31	3.8%
2008-9						



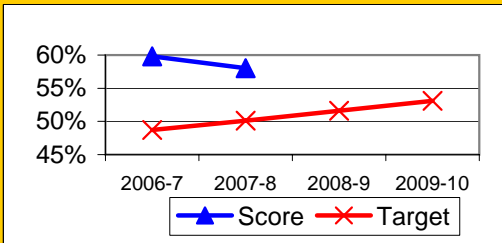
Honors (GATE, SBCC, IB, & AP; Seats, not students)	Latino		White		All Others	
	Number	Percent	Number	Percent	Number	Percent
2003-4						
2004-5						
2005-6	508	22.0%	1624	70.3%	179	7.7%
2006-7	868	23.3%	2623	70.4%	234	6.3%
2007-8	835	23.2%	2530	70.4%	230	6.4%
2008-9						



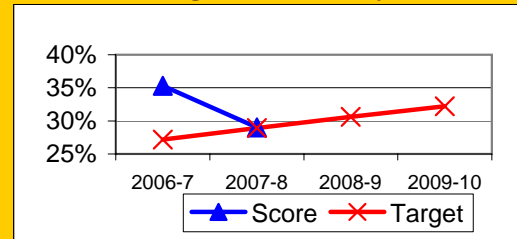
## Progress on English Learners Gaining One Proficiency Level Annually and Attaining English Language Proficiency

	Gained One Level On CELDT		Attained English Proficiency		
	Target	Score	Target	Score	
2003-4	51.0%		30.0%		
2004-5	51.5%	82.8%	30.7%	56.8%	
2005-6	52.0%	76.8%	31.4%	43.3%	
2006-7	48.7%	59.8%	27.2%	35.3%	New Norms
2007-8	50.1%	58.0%	28.9%	29.0%	
2008-9	51.6%		30.6%		
2009-10	53.1%		32.2%		

Gained One Level On CELDT



Attained English Proficiency

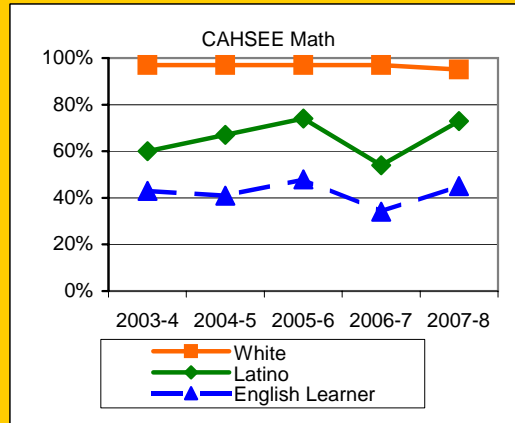
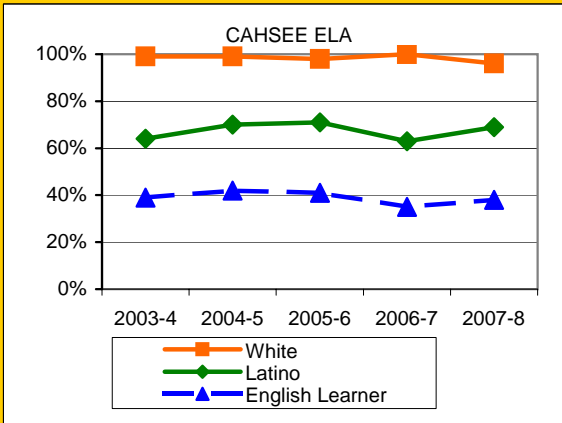


## Preparing Students to Pass the High School Exit Exam (CAHSEE)

English Language Arts (ELA), March and May in that year, 10th grade only, California cut points (dataquest)	Schoolwide	Latino	White	Socio-Econ Disadv	English Learner	Stud with Disab
2003-4	82.0%	64.0%	99.0%	57.0%	39.0%	48.0%
2004-5	83.0%	70.0%	99.0%	64.0%	42.0%	40.0%
2005-6	84.0%	71.0%	98.0%	66.0%	41.0%	37.0%
2006-7	79.0%	63.0%	100.0%	63.0%	35.0%	36.0%
2007-8	82.0%	69.0%	96.0%	68.0%	38.0%	38.0%
2008-9						

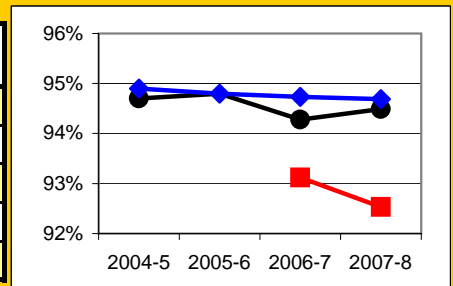
Math, all exams in that year, California cut points (dataquest)	Schoolwide	Latino	White	Socio-Econ Disadv	English Learner	Stud with Disab
2003-4	79.0%	60.0%	97.0%	59.0%	43.0%	25.0%
2004-5	80.0%	67.0%	97.0%	61.0%	41.0%	26.0%
2005-6	85.0%	74.0%	97.0%	68.0%	48.0%	33.0%
2006-7	73.0%	54.0%	97.0%	55.0%	34.0%	25.0%
2007-8	83.0%	73.0%	95.0%	71.0%	45.0%	38.0%
2008-9						

**Santa Barbara High Continued**



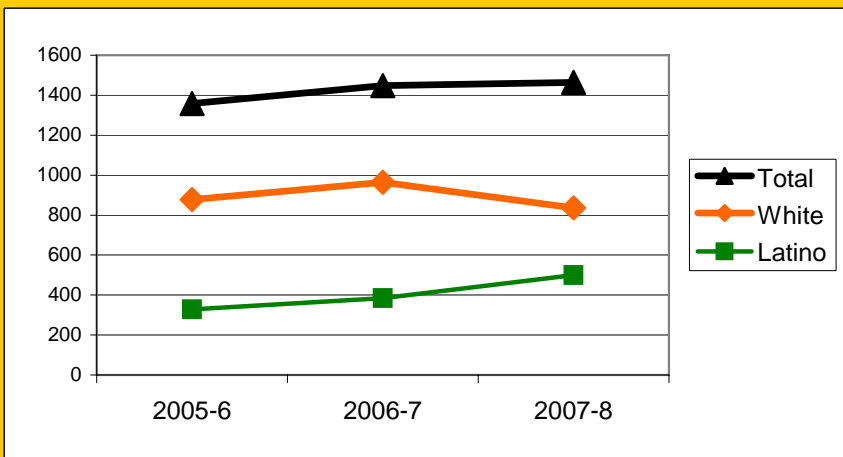
**Increase Efforts to Enhance Revenue**

Attendance (Percent over year)	Lowest Month	Whole Year	District
2004-5		94.7%	94.9%
2005-6		94.8%	94.8%
2006-7	93.1%	94.3%	94.7%
2007-8	92.5%	94.5%	94.7%
2008-9			



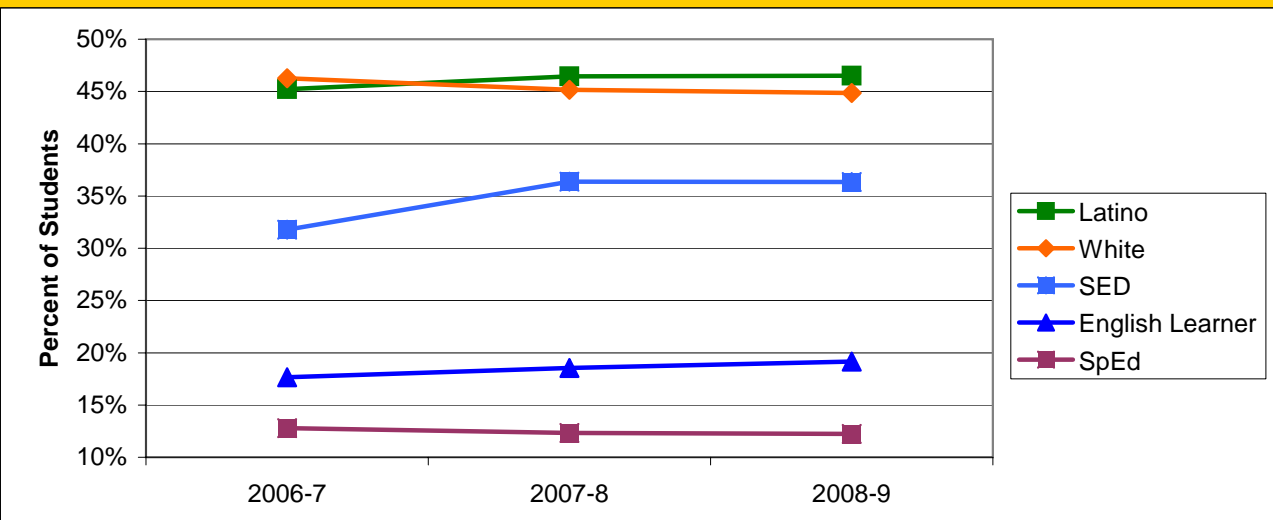
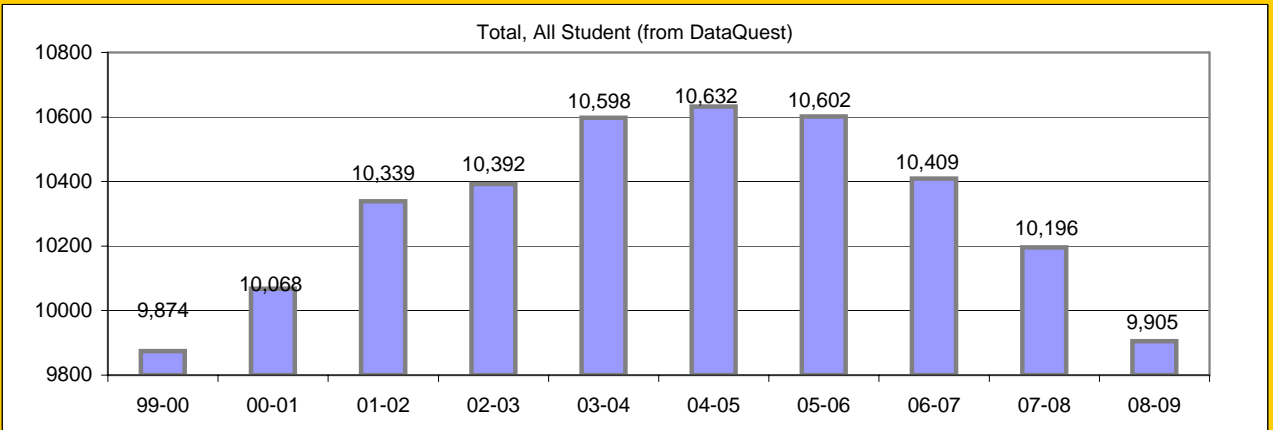
**Students Taking Course at Santa Barbara City College**

Unduplicated Students: Fall + Spring + Summer	Latino	White	Total
2005-6	329	878	1358
2006-7	384	964	1448
2007-8	500	836	1464
2008-9			



## Board Focus Goals: Secondary District - September 2009

Demographics (7-8, 0809 Aeries)	Total	Female	Male	Latino	White	SED	English Learner	SpEd
Number	9451	4640	4811	4396	4238	3434	1812	1157
Percent of Total		49.1%	50.9%	46.5%	44.8%	36.3%	19.2%	12.2%



Secondary District Continued

**Exceed Federal Adequate Yearly Progress (AYP) Accountability Goals** (Blue = Not

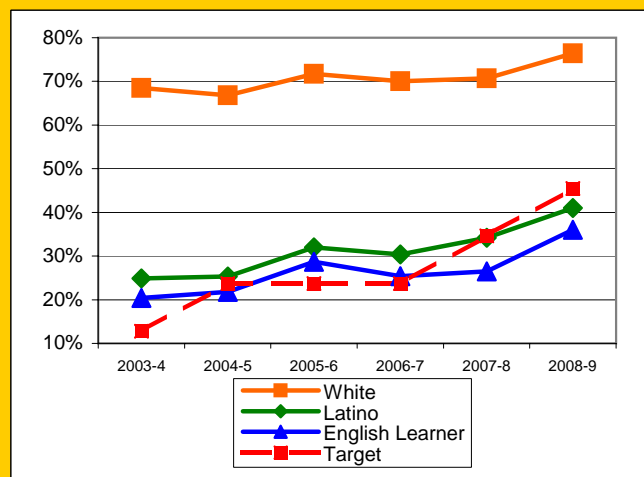
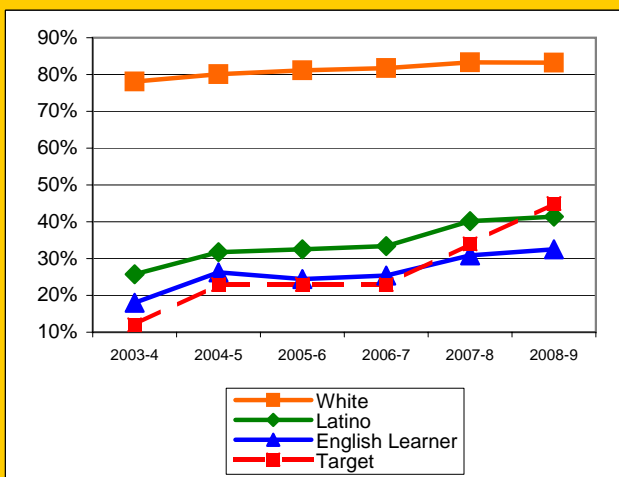
enough students, **Bold/underline/italic** = Made by adjustment, **Red** = Did not pass

English Language Arts (ELA): Percent Proficient or Higher (Based on 7-8th grade CST and 10th grade Exit Exam (CAHSEE), Federal Cut Points)	State Targets	Schoolw ide	Latino	White	Socio- Econ Disadv	English Learner	Stud with Disab	
2003-4	12.0%	52.8%	25.7%	78.1%	22.1%	18.0%	12.8%	
2004-5	23.0%	57.0%	31.7%	80.1%	28.0%	26.3%	17.2%	
2005-6	23.0%	57.7%	32.5%	81.1%	27.6%	24.4%	12.8%	
2006-7	23.0%	56.5%	33.4%	81.7%	30.7%	25.4%	14.5%	Mark 1
2007-8	34.0%	61.5%	40.2%	83.3%	37.4%	30.9%	17.8%	Mark 1
2008-9	45.0%	62.6%	41.4%	83.2%	40.0%	32.5%	24.4%	Not PI
State Averages 2-12, 2008-09		52.4%	39.2%	70.3%	38.6%	33.5%	30.7%	
2009-10	56.0%							Not PI

Math: Percent Proficient or Higher (Based on 7-8th grade CST and 10th grade Exit Exam (CAHSEE), Federal Cut Points)	State Targets	Schoolw ide	Latino	White	Socio- Econ Disadv	English Learner	Stud with Disab	
2003-4	12.8%	47.8%	24.9%	68.5%	23.1%	20.4%	11.8%	
2004-5	23.7%	47.2%	25.3%	66.8%	22.5%	21.8%	15.5%	
2005-6	23.7%	53.1%	32.0%	71.7%	30.0%	28.7%	13.8%	
2006-7	23.7%	49.6%	30.4%	70.0%	29.2%	25.4%	13.8%	
2007-8	34.6%	52.9%	34.2%	70.7%	33.6%	26.5%	16.0%	Mark 1
2008-9	45.5%	59.1%	41.0%	76.4%	39.7%	36.0%	22.0%	Not PI
State Averages 2-12, 2008-09		54.5%	44.0%	67.6%	43.9%	43.0%	32.3%	
2009-10	56.4%							Not PI

ELA

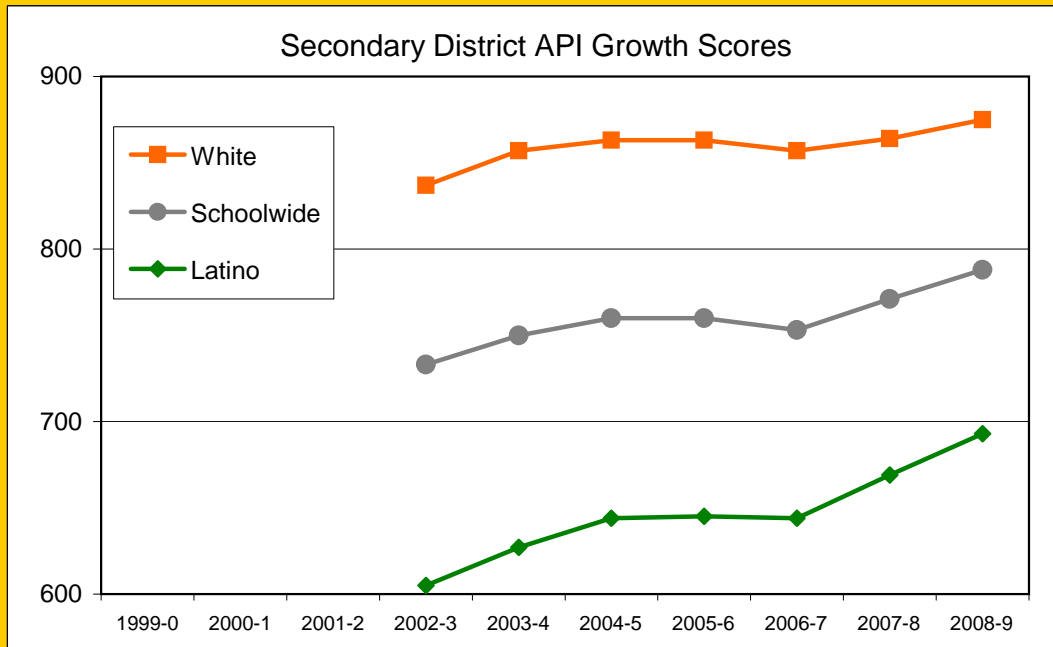
Math



Secondary District Continued

**Exceed State Academic Performance Index (API) Growth Goals**

	Schoolwide			Latino			White		
	Base	Growth/ Goal Met	State API (2-11)	Base	Growth/ Goal Met	State API (2-11)	Base	Growth/ Goal Met	State API (2-11)
<b>2003-4</b>	716	750		585	627		824	857	
<b>2004-5</b>	756	760		636	644		859	863	
<b>2005-6</b>	760	760	720	644	645	654	863	863	801
<b>2006-7</b>	757	753	728	642	644	665	857	857	805
<b>2007-8</b>	753	771	742	644	669	683	857	864	816
<b>2008-9</b>	775	788	755	674	693	698	864	875	828

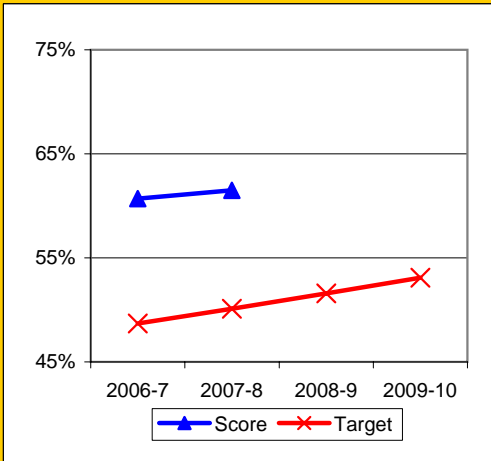


Secondary District Continued

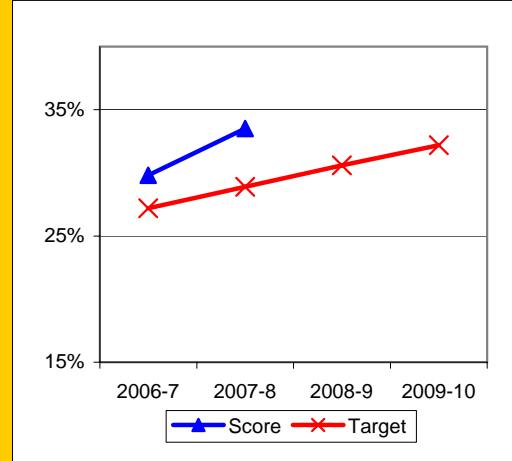
## Progress on English Learners Gaining One Proficiency Level Annually and Attaining English Language Proficiency

	Gained One Level On CELDT		Attained English Proficiency		
	Target	Score	Target	Score	
2003-4	51.0%	78.6%	30.0%	56.9%	
2004-5	51.5%	80.2%	30.7%	53.0%	
2005-6	52.0%	78.4%	31.4%	53.0%	
2006-7	48.7%	60.7%	27.2%	29.8%	New Norms
2007-8	50.1%	61.5%	28.9%	33.5%	
2008-9	51.6%		30.6%		
2009-10	53.1%		32.2%		

Gained One Level On CELDT



Attained English Proficiency

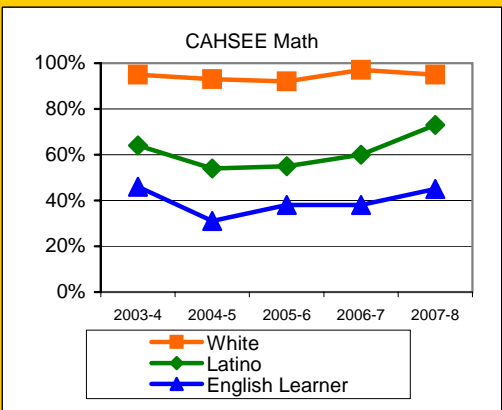
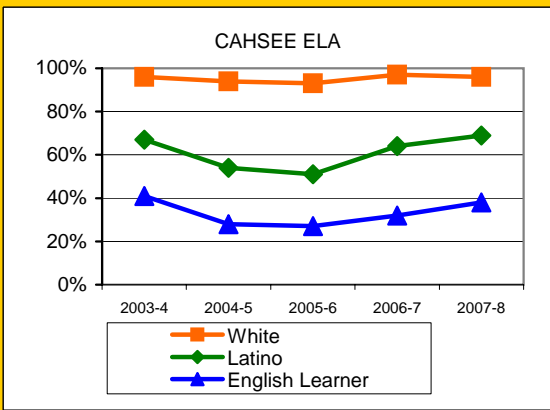


Secondary District Continued

**Preparing Students to Pass the High School Exit Exam (CAHSEE)**

English Language Arts (ELA), March and May in that year, 10th grade only, California cut points (dataquest)	Schoolwide	Latino	White	Socio-Econ Disadv	English Learner	Stud with Disab
2003-4	83.0%	67.0%	96.0%	62.0%	41.0%	48.0%
2004-5	74.0%	54.0%	94.0%	47.0%	28.0%	37.0%
2005-6	69.0%	51.0%	93.0%	44.0%	27.0%	33.0%
2006-7	82.0%	64.0%	97.0%	61.0%	32.0%	44.0%
2007-8	84.0%	69.0%	96.0%	68.0%	38.0%	38.0%
2008-9						

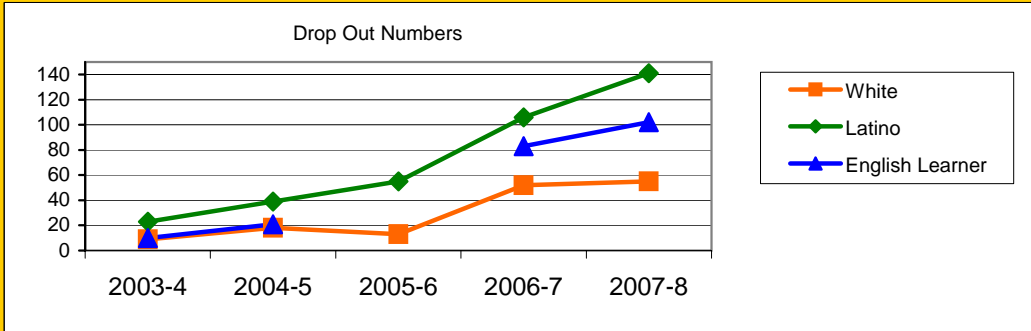
Math, all exams in that year, California cut points (dataquest)	Schoolwide	Latino	White	Socio-Econ Disadv	English Learner	Stud with Disab
2003-4	82.0%	64.0%	95.0%	63.0%	46.0%	37.0%
2004-5	73.0%	54.0%	93.0%	47.0%	31.0%	32.0%
2005-6	71.0%	55.0%	92.0%	50.0%	38.0%	30.0%
2006-7	79.0%	60.0%	97.0%	59.0%	38.0%	35.0%
2007-8	83.0%	73.0%	95.0%	71.0%	45.0%	38.0%
2008-9						



**Secondary District Continued**

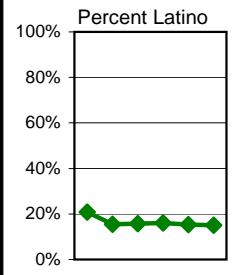
<b>Drop out rates for High Schools</b> (grades 9-12 from Dataquest; some data is not available)	District	Latino	White	Socio-Econ Disadv	English Learner	Stud with Disab
2003-4	33	23	9	3	10	5
2004-5	58	39	18	17	21	11
2005-6	75	55	13			
2006-7	170	106	52	37	83	0
2007-8	213	141	55	119	102	49

(New coding)

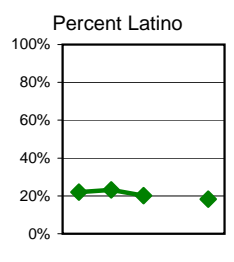


**Increase Participation Across Demographic Spectrum in Advanced Courses (Percent of students within total population)**

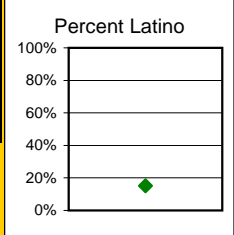
<b>GATE (percent of all GATE students)</b>	Latino		White		All Others	
	Number	Percent	Number	Percent	Number	Percent
2003-4	283	20.8%	935	68.7%	143	10.5%
2004-5	338	15.5%	1614	73.8%	234	10.7%
2005-6	406	15.7%	1889	73.1%	290	11.2%
2006-7	416	16.0%	1872	72.2%	304	11.7%
2007-8	381	15.4%	1803	72.6%	298	12.0%
2008-9	356	15.1%	1701	72.1%	303	12.8%
2009-10						



<b>AP (From SASI and Aeries data; Number of Students)</b>	Latino		White		All Others	
	Number	Percent	Number	Percent	Number	Percent
2003-4	378	22.0%	1177	68.5%	162	9.4%
2004-5	411	23.1%	1195	67.2%	172	9.7%
2005-6	384	20.1%	1305	68.4%	219	11.5%
(roll over data missing) 2006-7						
2007-8	277	18.2%	1063	70.0%	179	11.8%
2008-9						

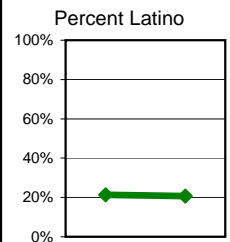


<b>AP (From Aeries data; Seats taken in courses by semester)</b>	Latino		White		All Others	
	Number	Percent	Number	Percent	Number	Percent
2007-8	765	15.2%	3603	71.6%	662	13.2%
2008-9						

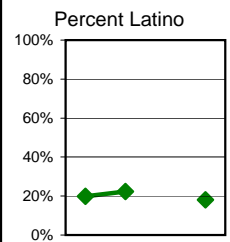


Secondary District Continued

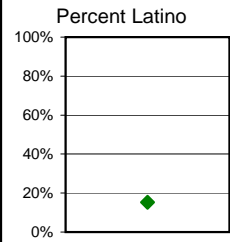
Academies (MAD, VADA, Green, Health, Eng; Unduplicated students)	Latino		White		All Others	
	Number	Percent	Number	Percent	Number	Percent
2003-4						
2004-5						
2005-6						
(roll over data missing) 2006-7						
2007-8	124	21.4%	409	70.6%	46	7.9%
2008-9	118	20.7%	384	67.4%	68	11.9%



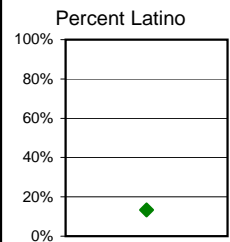
Academies (MAD, VADA, Green, Health, Eng; Seats, not students)	Latino		White		All Others	
	Number	Percent	Number	Percent	Number	Percent
2003-4						
2004-5	303	19.8%	1121	73.1%	109	7.1%
2005-6	471	22.4%	1495	71.0%	139	6.6%
(roll over data missing) 2006-7						
2007-8	336	18.0%	1432	77.0%	98	5.0%
2008-9						



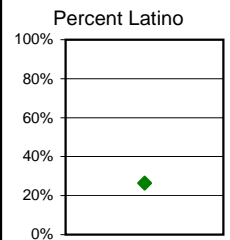
International Baccalaureate (at DP only, undup students)	Latino		White		All Others	
	Number	Percent	Number	Percent	Number	Percent
2003-4						
2004-5						
2005-6						
(roll over data missing) 2006-7						
2007-8	25	15.3%	120	73.6%	18	11.0%
2008-9						



International Baccalaureate (at DP only, Seats, not students)	Latino		White		All Others	
	Number	Percent	Number	Percent	Number	Percent
2003-4						
2004-5						
2005-6						
(roll over data missing) 2006-7						
2007-8	96	13.3%	547	75.6%	81	11.2%
2008-9						

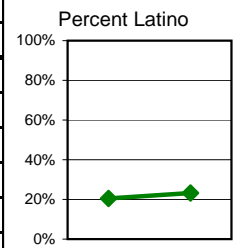


Honors (Not GATE, IB, or AP; Undup students)	Latino		White		All Others	
	Number	Percent	Number	Percent	Number	Percent
2003-4						
2004-5						
2005-6						
(roll over data missing) 2006-7						
2007-8	562	26.4%	1356	63.8%	208	9.8%
2008-9						



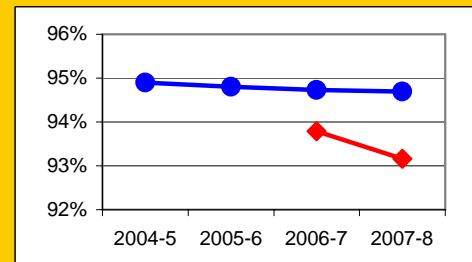
**Secondary District Continued**

Honors (Not GATE, IB, or AP; Seats, not students)	Latino		White		All Others	
	Number	Percent	Number	Percent	Number	Percent
2003-4						
2004-5						
2005-6	962	20.5%	3252	69.2%	483	10.3%
(roll over data missing) 2006-7						
2007-8	1173	23.2%	3382	66.9%	520	9.9%
2008-9						



**Increase Efforts to Enhance Revenue**

Attendance (Percent over year)	Lowest Month	District
2004-5		94.9%
2005-6		94.8%
2006-7	93.8%	94.7%
2007-8	93.2%	94.7%
2008-9		



**Students Taking Course at Santa Barbara City College**

Unduplicated Students: Fall + Spring + Summer	Latino	White	Total
2005-6	769	2098	3337
2006-7	895	2262	3616
2007-8	1142	2033	3733
2008-9			

DP	SM	SB
1344	635	1358
1436	732	1448
1465	804	1464

