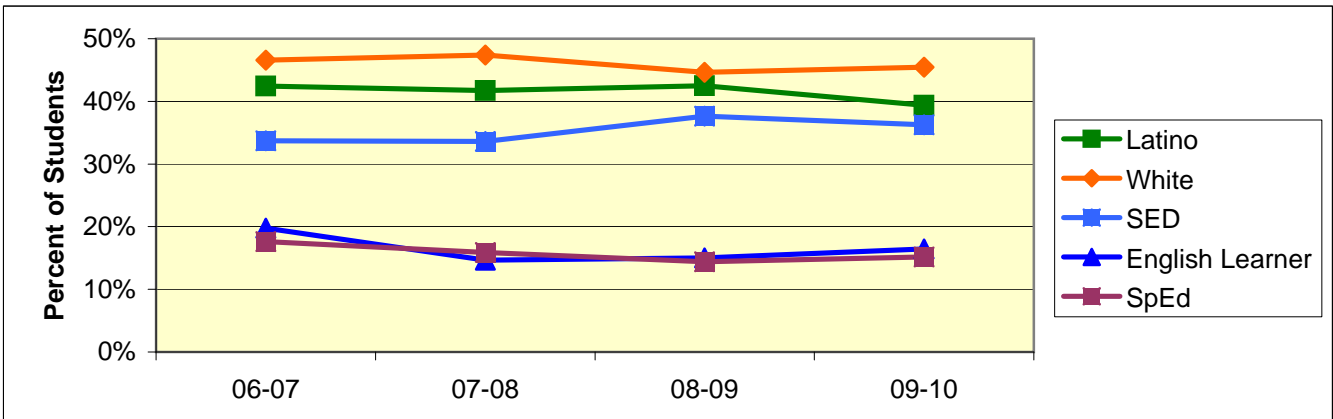
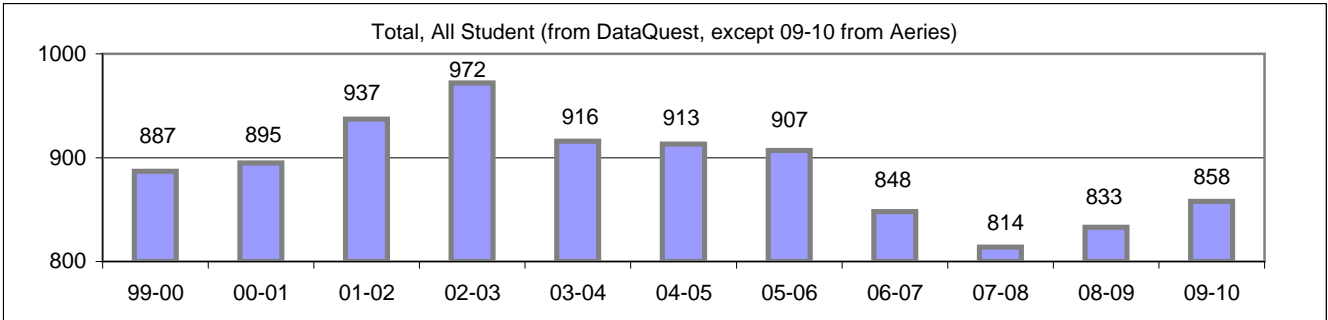


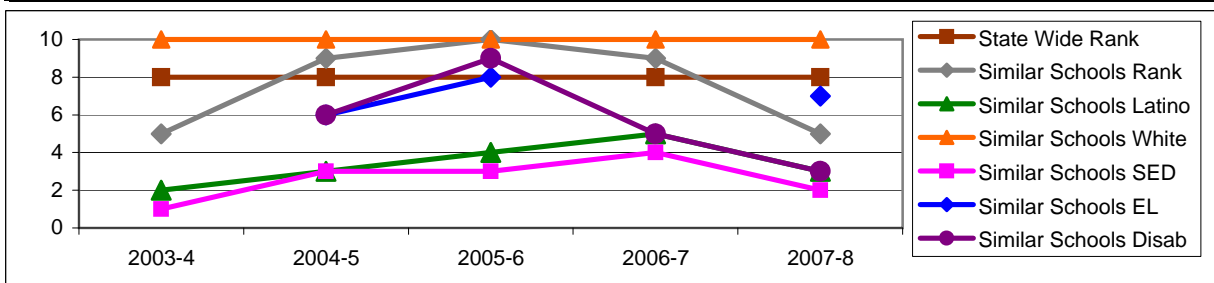
Board Focus Goals: Goleta Valley Junior High (6) - January 2010

Demographics (7-8, Jan 2010, Aeries)	Total	Female	Male	Latino	White	SED	English Learner	SpEd
Number	858	410	448	338	390	311	141	130
Percent of Total		47.8%	52.2%	39.4%	45.5%	36.2%	16.4%	15.2%



Achieve a State Similar School Ranking of 8 or Higher (scale = 1-10)

	State Wide Rank	Similar Schools Rank	Similar Schools Latino	Similar Schools White	Similar Schools SED	Similar Schools EL	Similar Schools Disab
2003-4	8	5	2	10	1	NA	NA
2004-5	8	9	3	10	3	6	6
2005-6	8	10	4	10	3	8	9
2006-7	8	9	5	10	4	NA	5
2007-8	8	5	3	10	2	7	3

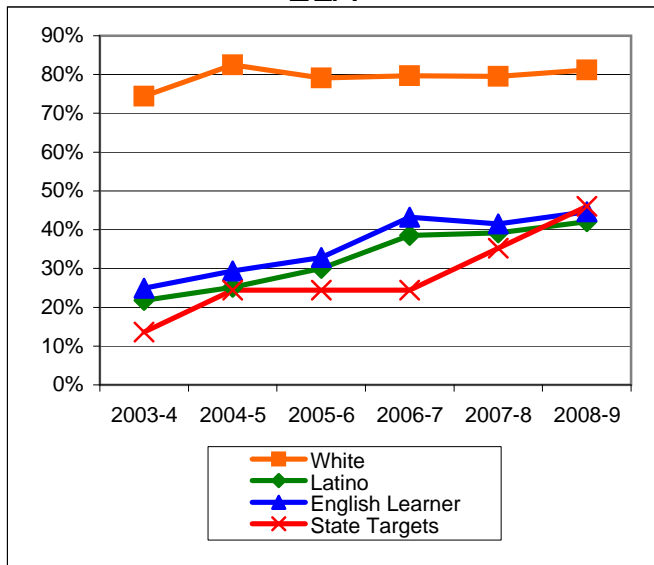


Exceed Federal Adequate Yearly Progress (AYP) Accountability Goals (Blue = Not enough students, **Bold/underline/italic** = Made by adjustment, Red = Did not pass

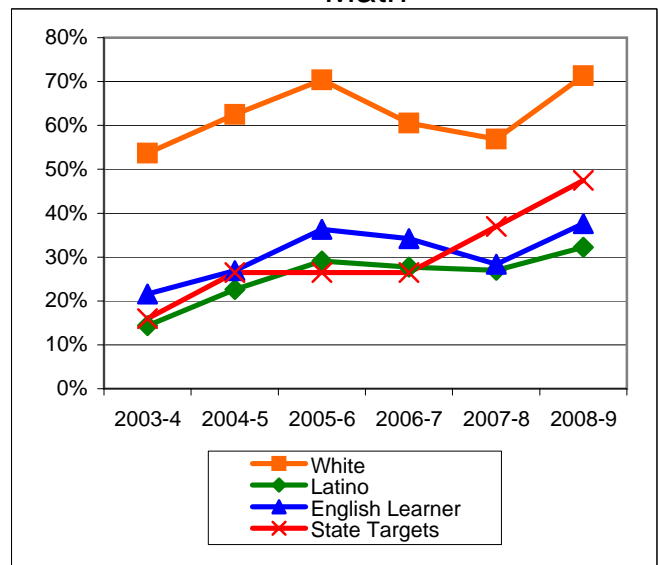
English Language Arts (ELA): Percent Proficient or Higher (based on CST exams)	State Targets	Schoolwide	Latino	White	Socio-Econ Disadv	English Learner	Stud with Disab	
2003-4	13.6%	52.6%	21.8%	74.4%	19.8%	24.9%	8.9%	
2004-5	24.4%	59.4%	25.2%	82.5%	25.0%	29.4%	12.2%	
2005-6	24.4%	58.7%	30.0%	79.1%	26.6%	32.8%	16.1%	
2006-7	24.4%	63.9%	38.5%	79.7%	34.4%	43.2%	19.8%	Mark 1
2007-8	35.2%	62.6%	39.2%	79.5%	34.1%	41.5%	12.7%	Mark 2
2008-9	46.0%	65.1%	42.1%	81.2%	41.2%	44.6%	29.6%	PI Y1
State Averages 2-12, 2008-09		52.4%	39.2%	70.3%	38.6%	33.5%	30.7%	
2009-10	56.8%							PI Y2

Math: Percent Proficient or Higher (Based on CST exams)	State Targets	Schoolwide	Latino	White	Socio-Econ Disadv	English Learner	Stud with Disab	
2003-4	16.0%	39.0%	14.4%	53.7%	13.8%	21.6%	3.3%	
2004-5	26.5%	47.4%	22.6%	62.5%	21.6%	26.9%	9.1%	
2005-6	26.5%	54.9%	29.1%	70.4%	26.6%	36.3%	19.8%	
2006-7	26.5%	49.0%	27.7%	60.5%	26.6%	34.2%	10.8%	
2007-8	37.0%	45.5%	27.0%	56.9%	22.6%	28.4%	7.9%	
2008-9	47.5%	55.7%	32.2%	71.3%	29.1%	37.6%	24.3%	PI Y1
State Averages 2-12, 2008-09		54.5%	44.0%	67.6%	43.9%	43.0%	32.3%	
2009-10	58.0%							PI Y2

ELA

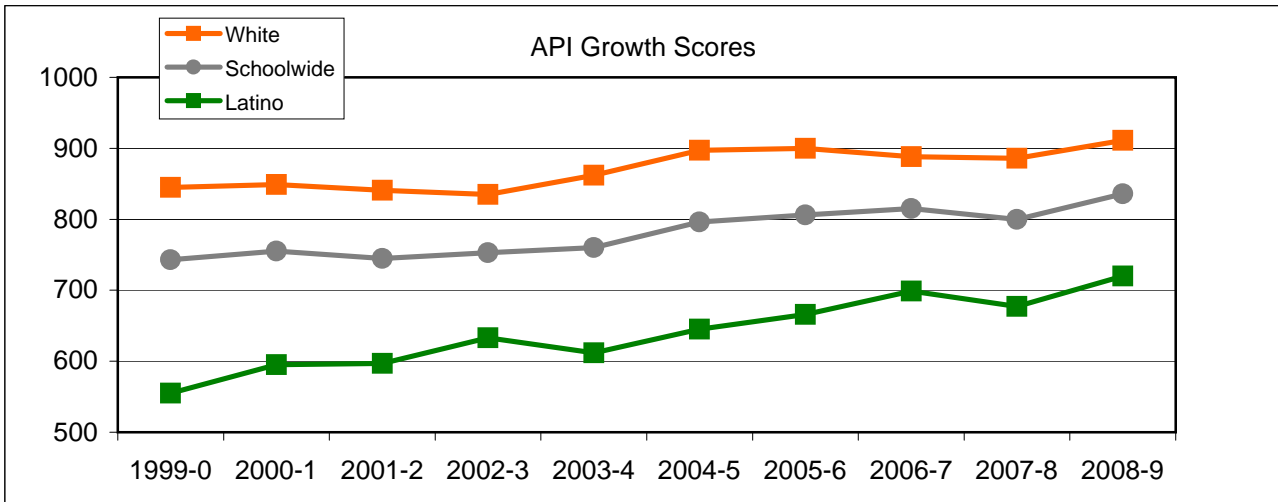


Math



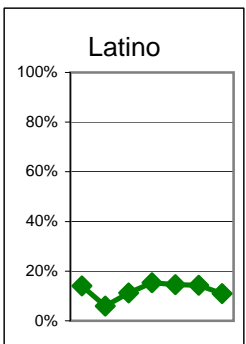
Goleta Valley Continued
Exceed State Academic Performance Index (API) Growth Goals

	Schoolwide			Latino			White		
	Base	Growth/ Goal Met	State API (7-8)	Base	Growth/ Goal Met	State API (7-8)	Base	Growth/ Goal Met	State API (7-8)
2003-4	753	760 Met		634	612 Not Met		838	862 Met	
2004-5	761	796 Met		616	645 Met		860	897 Met	
2005-6	796	806 Met	715	645	666 Met	642	897	900 Met	805
2006-7	810	815 Met	720	670	699 Met	651	903	888 Met	807
2007-8	815	800 Met	735	699	677 Not Met	669	888	886 Met	818
2008-9	817	836 Met	754	704	720 Met	690	888	911 Met	833



Increase Participation Across Demographic Spectrum in Advanced Courses

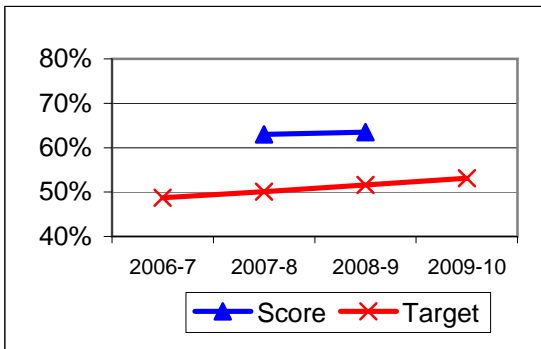
GATE (percent of all GATE students)	Latino		White		All Others	
	Number	Percent	Number	Percent	Number	Percent
2003-4	17	14.0%	83	68.6%	21	17.4%
2004-5	13	5.9%	167	75.9%	40	18.2%
2005-6	25	11.2%	155	69.5%	43	19.3%
2006-7	33	15.3%	150	69.8%	32	14.9%
2007-8	31	14.6%	148	69.5%	34	16.0%
2008-9	33	14.3%	151	65.7%	46	20.0%
2009-10	14	10.9%	86	67.2%	28	21.9%



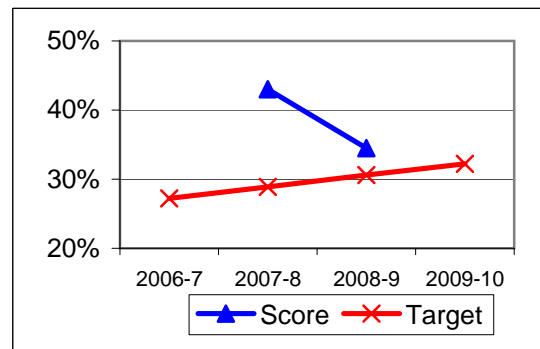
Progress on English Learners Gaining One Proficiency Level Annually and Attaining English Language Proficiency

	Gained One Level On CELDT		Attained English Proficiency		
	Target	Score	Target	Score	
2003-4	51.0%		30.0%		
2004-5	51.5%	84.7%	30.7%	52.2%	
2005-6	52.0%	84.3%	31.4%	68.4%	
2006-7	48.7%		27.2%		New Norms
2007-8	50.1%	63.0%	28.9%	43.0%	
2008-9	51.6%	63.5%	30.6%	34.5%	
2009-10	53.1%		32.2%		

Gained One Level On CELDT

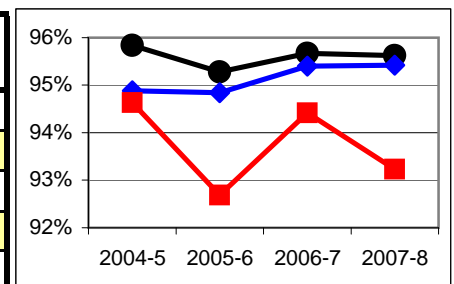


Attained English Proficiency



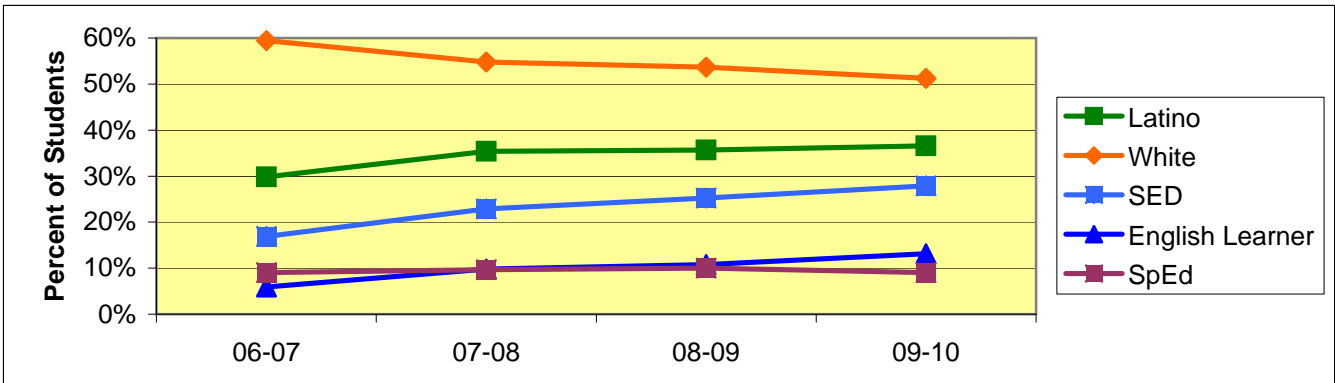
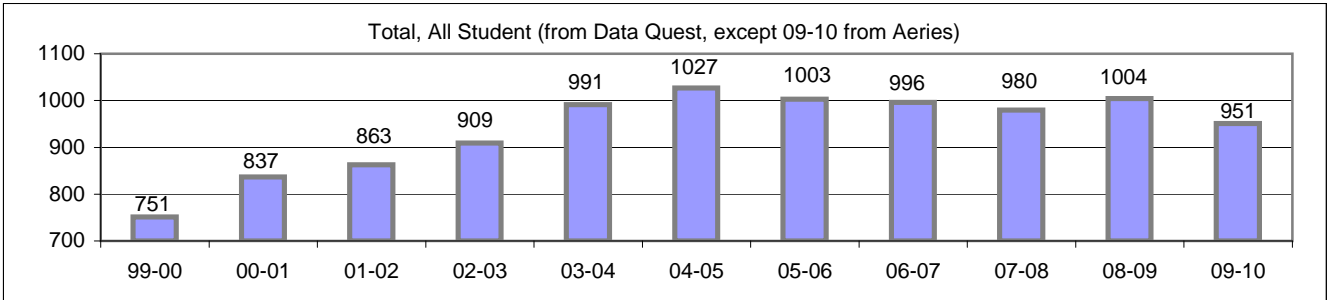
Increase Efforts to Enhance Revenue

Attendance (Percent over year)	Lowest Month	Whole Year	District (Jr.)
2004-5	94.6%	95.8%	94.9%
2005-6	92.7%	95.3%	94.8%
2006-7	94.4%	95.7%	95.4%
2007-8	93.2%	95.6%	95.4%
2008-9			



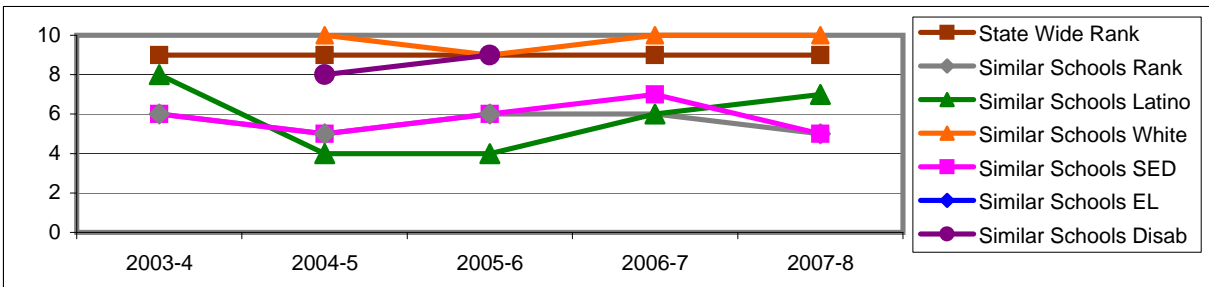
Board Focus Goals: La Colina Junior High School (1) - January 2010

Demographics (7-8, Jan 2010, Aeries)	Total	Female	Male	Latino	White	SED	English Learner	SpEd
Number	951	487	464	348	487	265	125	86
Percent of Total		51.2%	48.8%	36.6%	51.2%	27.9%	13.1%	9.0%



Achieve a State Similar School Ranking of 8 or Higher (scale = 1-10)

	State Wide Rank	Similar Schools Rank	Similar Schools Latino	Similar Schools White	Similar Schools SED	Similar Schools EL	Similar Schools Disab
2003-4	9	6	8	NA	6	NA	NA
2004-5	9	5	4	10	5	NA	8
2005-6	9	6	4	9	6	7	9
2006-7	9	6	6	10	7	NA	NA
2007-8	9	5	7	10	5	NA	NA



Exceed Federal Adequate Yearly Progress (AYP) Accountability Goals (Blue = Not enough students, Bold/underline/italic = Made by adjustment, Red = Did not pass

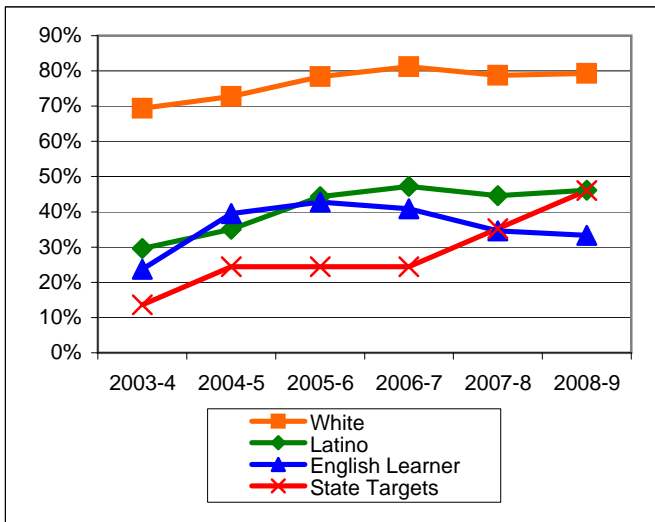
English Language Arts (ELA): Percent Proficient or Higher (based on CST exams)	State Targets	Schoolwide	Latino	White	Socio-Econ Disadv	English Learner	Stud with Disab
2003-4	13.6%	58.3%	29.6%	69.4%	26.8%	23.7%	14.4%
2004-5	24.4%	62.5%	35.1%	72.7%	33.1%	39.5%	25.9%
2005-6	24.4%	68.6%	44.3%	78.4%	42.9%	42.8%	<u>17.6%</u>
2006-7	24.4%	69.8%	47.2%	81.2%	43.6%	40.9%	21.5%
2007-8	35.2%	65.7%	44.6%	78.7%	39.7%	<u>34.6%</u>	12.8%
2008-9	46.0%	66.9%	46.1%	79.3%	38.5%	33.3%	18.1%
State Averages 2-12, 2008-09		52.4%	39.2%	70.3%	38.6%	33.5%	30.7%
2009-10	56.8%						

Mark-4

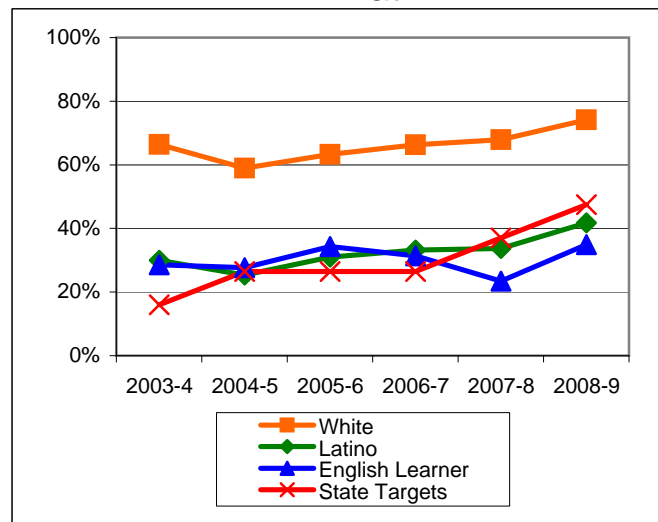
Math: Percent Proficient or Higher (Based on CST exams)	State Targets	Schoolwide	Latino	White	Socio-Econ Disadv	English Learner	Stud with Disab
2003-4	16.0%	56.3%	30.0%	66.4%	31.4%	28.6%	14.8%
2004-5	26.5%	49.8%	<u>25.4%</u>	59.0%	<u>24.9%</u>	27.7%	<u>24.1%</u>
2005-6	26.5%	54.4%	31.0%	63.3%	35.1%	34.3%	<u>9.9%</u>
2006-7	26.5%	56.6%	33.2%	66.3%	30.4%	31.4%	15.2%
2007-8	37.0%	55.7%	33.7%	67.9%	33.0%	23.4%	12.8%
2008-9	47.5%	62.6%	<u>41.8%</u>	74.1%	37.8%	<u>34.9%</u>	17.0%
State Averages 2-12, 2008-09		54.5%	44.0%	67.6%	43.9%	43.0%	32.3%
2009-10	58.0%						

Mark-4

ELA

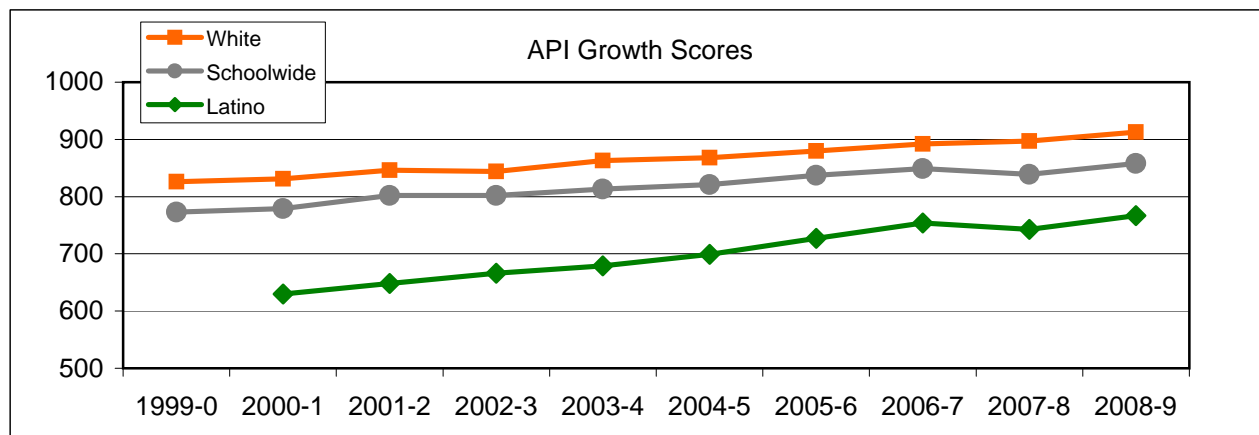


Math



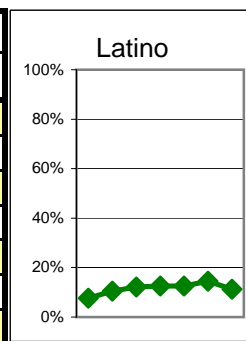
Exceed State Academic Performance Index (API) Growth Goals

	Schoolwide			Latino			White		
	Base	Growth/ Goal Met	State API (7-8)	Base	Growth/ Goal Met	State API (7-8)	Base	Growth/ Goal Met	State API (7-8)
2003-4	806	813 Met		669	679 Met		850	863 Met	
2004-5	814	821 Met		681	699 Met		863	868 Met	
2005-6	821	837 Met	715	699	727 Met	642	868	880 Met	805
2006-7	835	849 Met	720	724	754 Met	651	878	892 Met	807
2007-8	849	839 Met	735	754	743 Not Met	669	892	897 Met	818
2008-9	848	858 Met	754	758	767 Met	690	901	913 Met	833



Increase Participation Across Demographic Spectrum in Advanced Courses

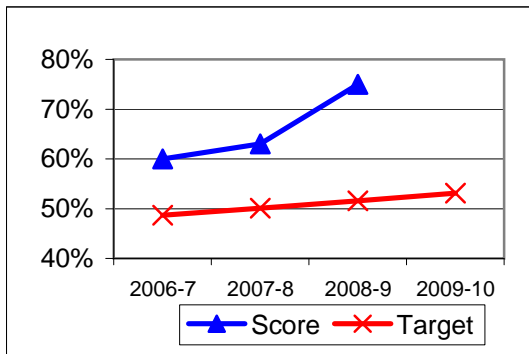
GATE (percent of all GATE students)	Latino		White		All Others	
	Number	Percent	Number	Percent	Number	Percent
2003-4	14	7.7%	143	78.1%	26	14.2%
2004-5	33	10.4%	248	78.5%	35	11.1%
2005-6	41	12.2%	256	76.2%	39	11.6%
2006-7	38	12.6%	225	74.5%	39	12.9%
2007-8	38	12.5%	228	75.0%	38	12.5%
2008-9	44	14.4%	219	71.8%	42	13.8%
2009-10	32	11.3%	202	71.4%	49	17.3%



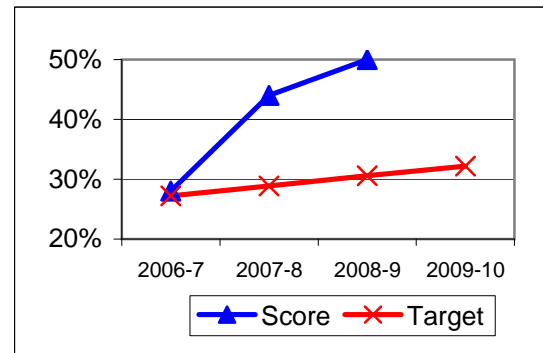
Progress on English Learners Gaining One Proficiency Level Annually and Attaining English Language Proficiency

	Gained One Level On CELDT		Attained English Proficiency		
	Target	Score	Target	Score	
2003-4	51.0%		30.0%		
2004-5	51.5%	75.8%	30.7%	39.6%	
2005-6	52.0%	86.4%	31.4%	76.9%	
2006-7	48.7%	60.0%	27.2%	28.0%	New Norms
2007-8	50.1%	63.0%	28.9%	44.0%	
2008-9	51.6%	75.0%	30.6%	50.0%	
2009-10	53.1%		32.2%		

Gained One Level On CELDT

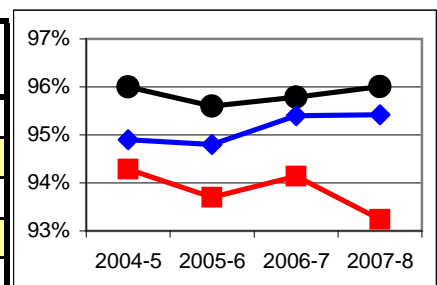


Attained English Proficiency



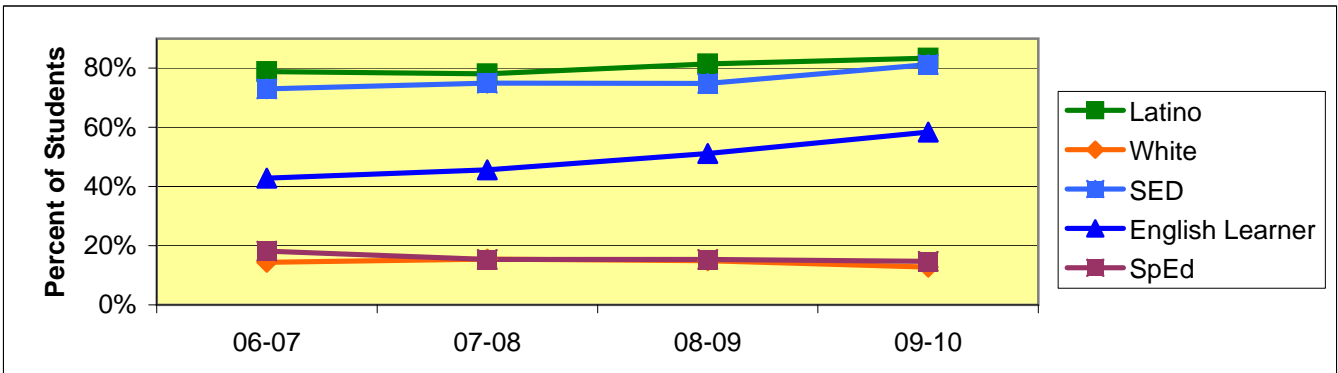
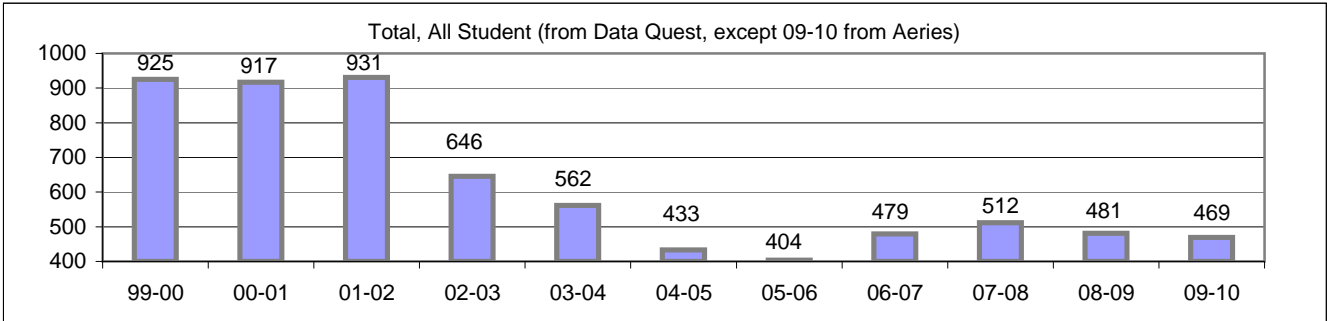
Increase Efforts to Enhance Revenue

Attendance (Percent over year)	Lowest Month	Whole Year	District
2004-5	94.3%	96.0%	94.9%
2005-6	93.7%	95.6%	94.8%
2006-7	94.1%	95.8%	95.4%
2007-8	93.2%	96.0%	95.4%
2008-9			



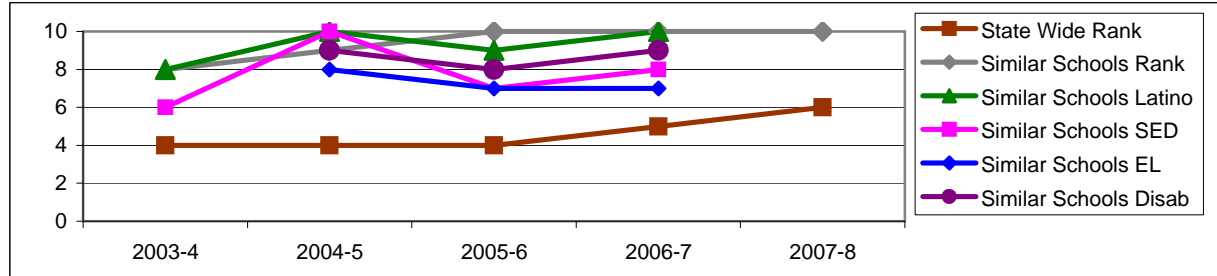
Board Focus Goals: La Cumbre Junior High (2) - January 2010

Demographics (7-8, Jan 2010, Aeries)	Total	Female	Male	Latino	White	SED	English Learner	SpEd
Number	469	215	254	391	60	381	274	69
Percent of Total		45.8%	54.2%	83.4%	12.8%	81.2%	58.4%	14.7%



Achieve a State Similar School Ranking of 8 or Higher (scale = 1-10)

	State Wide Rank	Similar Schools Rank	Similar Schools Latino	Similar Schools White	Similar Schools SED	Similar Schools EL	Similar Schools Disab
2003-4	4	8	8	NA	6	NA	NA
2004-5	4	9	10	NA	10	8	9
2005-6	4	10	9	NA	7	7	8
2006-7	5	10	10	NA	8	7	9
2007-8	6	10	10	10	9	7	NA

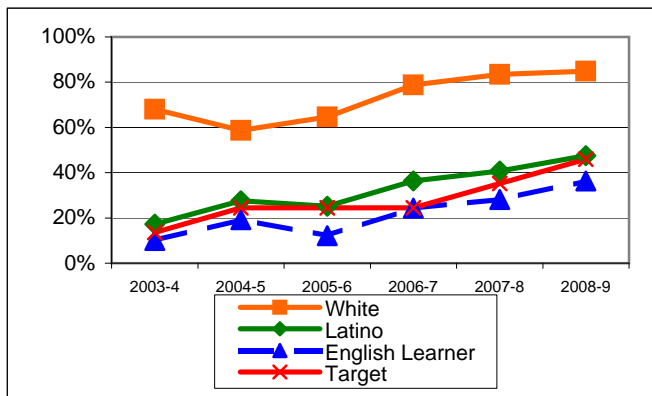


Exceed Federal Adequate Yearly Progress (AYP) Accountability Goals (Blue = Not enough students, **Bold/underline/italic** = Made by adjustment, **Red** = Did not pass

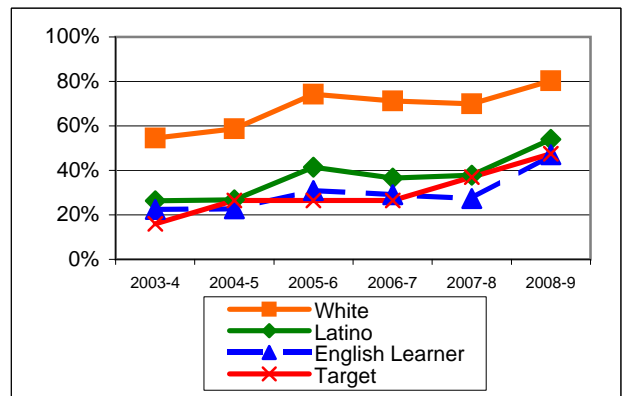
English Language Arts (ELA): Percent Proficient or Higher (based on CST exams)	State Targets	Schoolwide	Latino	White	Socio-Econ Disadv	English Learner	Stud with Disab	
2003-4	13.6%	24.5%	17.3%	68.1%	15.7%	10.0%	3.1%	PI Y1
2004-5	24.4%	31.3%	27.6%	58.7%	24.5%	19.2%	8.3%	PI Y2
2005-6	24.4%	29.4%	25.2%	64.7%	20.3%	12.1%	8.1%	PI Y3
2006-7	24.4%	45.2%	36.3%	78.8%	33.2%	24.3%	17.5%	PI Y4
2007-8	35.2%	48.4%	40.7%	83.5%	38.3%	28.2%	18.4%	PI Y4
2008-9	46.0%	54.0%	47.5%	84.8%	47.7%	36.4%	47.3%	PI Y5
State Averages 2-12, 2008-09		52.4%	39.2%	70.3%	38.6%	33.5%	30.7%	
2009-10	56.8%							PI Y5

Math: Percent Proficient or Higher (Based on CST exams)	State Targets	Schoolwide	Latino	White	Socio-Econ Disadv	English Learner	Stud with Disab	
2003-4	16.0%	30.5%	26.4%	54.5%	25.5%	22.4%	11.5%	PI Y1
2004-5	26.5%	30.3%	26.8%	58.7%	25.5%	22.8%	19.0%	PI Y2
2005-6	26.5%	45.3%	41.5%	74.3%	37.5%	30.9%	19.5%	PI Y3
2006-7	26.5%	43.8%	36.5%	71.2%	33.7%	29.0%	22.2%	PI Y4
2007-8	37.0%	44.2%	37.9%	70.0%	36.9%	27.3%	19.5%	PI Y4
2008-9	47.5%	58.6%	53.9%	80.3%	54.0%	47.0%	33.8%	PI Y5
State Averages 2-12, 2008-09		54.5%	44.0%	67.6%	43.9%	43.0%	32.3%	
2009-10	58.0%							PI Y5

ELA

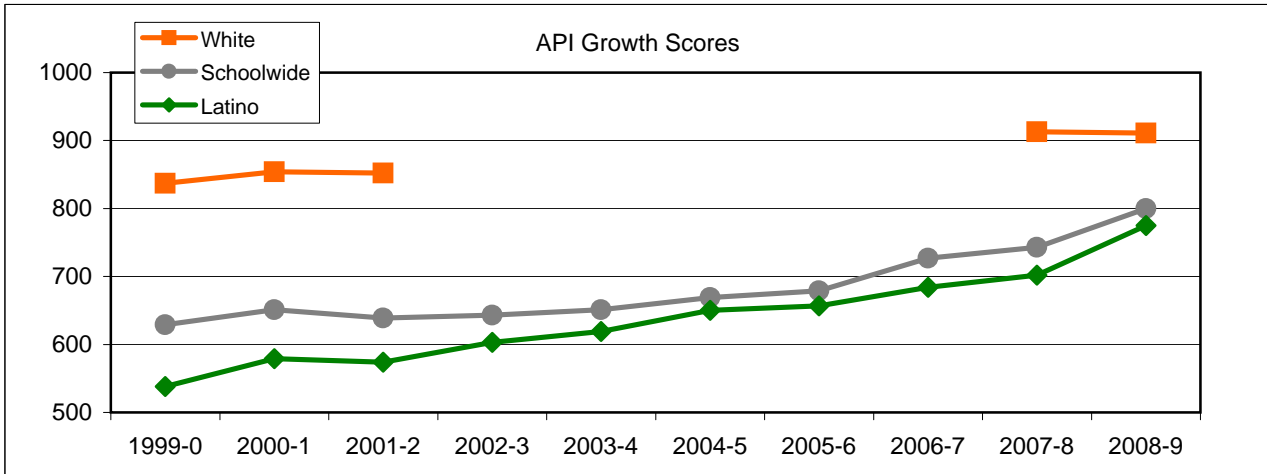


Math



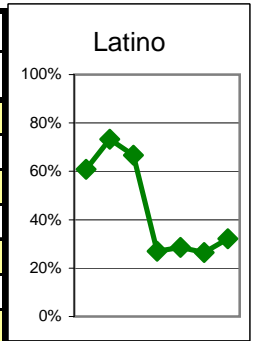
Exceed State Academic Performance Index (API) Growth Goals

	Schoolwide			Latino			White		
	Base	Growth/ Goal Met	State API (7-8)	Base	Growth/ Goal Met	State API (7-8)	Base	Growth/ Goal Met	State API (7-8)
2003-4	611	651 Met		570	619 Met				
2004-5	658	669 Met		627	650 Met				
2005-6	669	679 Met	715	650	657 Met	642			805
2006-7	680	727 Met	720	658	684 Met	651			807
2007-8	727	743 Met	735	684	702 Met	669		913 Met	818
2008-9	759	800 Met	754	720	775 Met	690	916	911 Met	833



Increase Participation Across Demographic Spectrum in Advanced Courses

GATE (percent of all GATE students)	Latino		White		All Others	
	Number	Percent	Number	Percent	Number	Percent
2003-4	28	60.9%	15	32.6%	3	6.5%
2004-5	33	73.3%	12	26.7%	0	0.0%
2005-6	32	66.7%	11	22.9%	5	10.4%
2006-7	14	26.9%	32	61.5%	6	11.5%
2007-8	16	28.6%	34	60.7%	6	10.7%
2008-9	9	26.5%	22	64.7%	3	8.8%
2009-10	9	32.1%	16	57.1%	3	10.7%

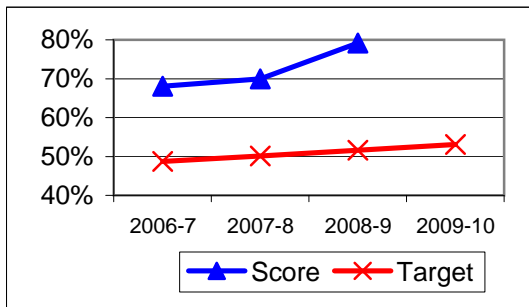


La Cumbre continued

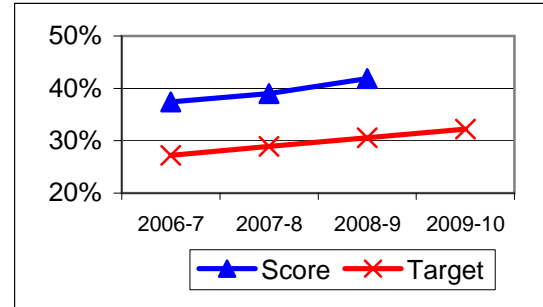
Progress on English Learners Gaining One Proficiency Level Annually and Attaining English Language Proficiency

	Gained One Level On CELDT		Attained English Proficiency		
	Target	Score	Target	Score	
2003-4	51.0%		30.0%		
2004-5	51.5%	86.5%	30.7%	58.8%	
2005-6	52.0%	79.1%	31.4%	52.5%	
2006-7	48.7%	68.1%	27.2%	37.4%	New Norms
2007-8	50.1%	70.0%	28.9%	39.0%	
2008-9	51.6%	79.2%	30.6%	41.9%	
2009-10	53.1%		32.2%		

Gained One Level On CELDT

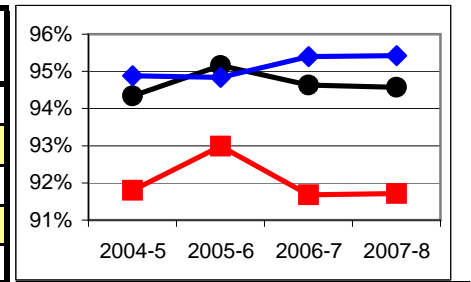


Attained English Proficiency



Increase Efforts to Enhance Revenue

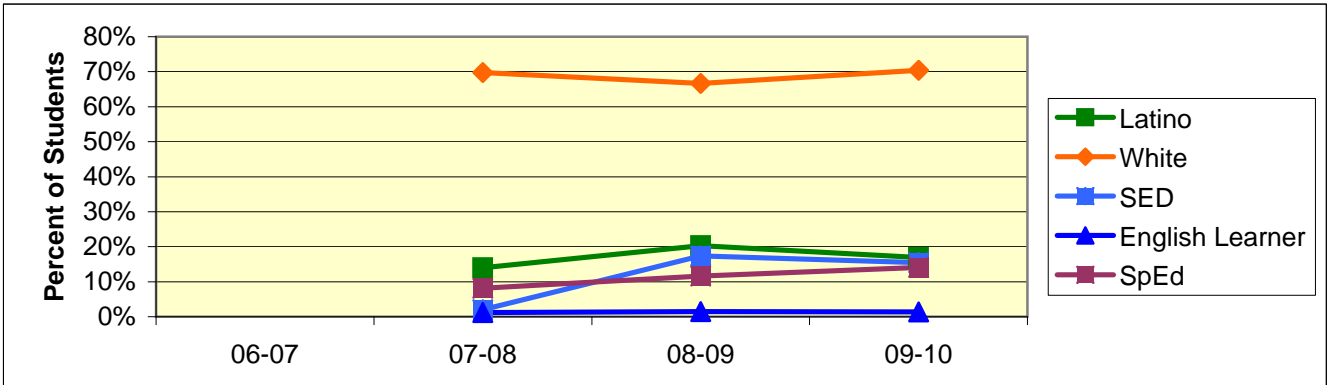
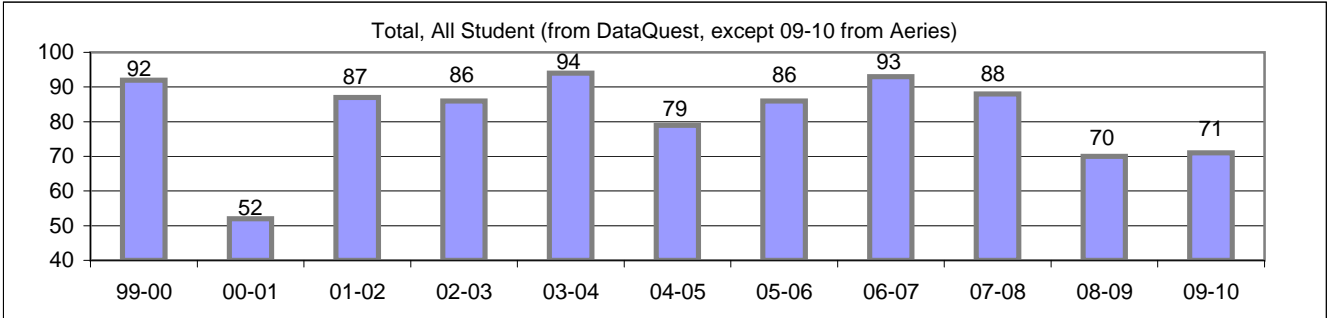
Attendance (Percent over year)	Lowest Month	Whole Year	District
2004-5	91.8%	94.3%	94.9%
2005-6	93.0%	95.2%	94.8%
2006-7	91.7%	94.6%	95.4%
2007-8	91.7%	94.6%	95.4%
2008-9			



Prepared by Dr. Davis Hayden, Director of Research, Evaluation, and Technology

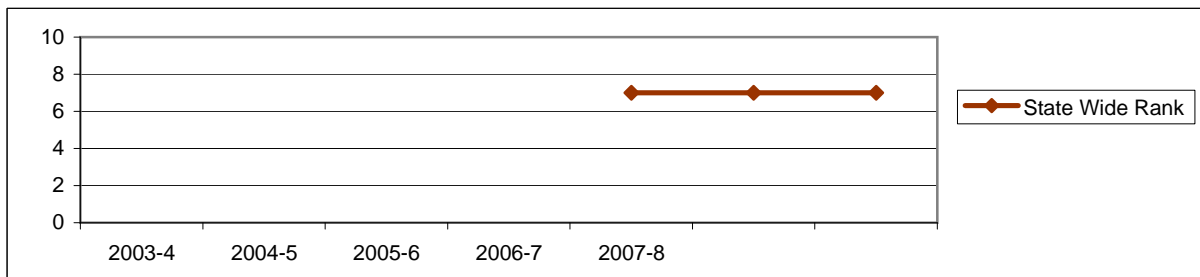
Board Focus Goals: Santa Barbara Charter Middle (8) - January 2010

Demographics (6-8, Jan 2010, Aeries)	Total	Female	Male	Latino	White	SED	English Learner	SpEd
Number	71	36	35	12	50	11	1	10
Percent of Total		50.7%	49.3%	16.9%	70.4%	15.5%	1.4%	14.1%



Achieve a State Similar School Ranking of 8 or Higher (scale = 1-10)

	State Wide Rank	Similar Schools Rank	Similar Schools Latino	Similar Schools White	Similar Schools SED	Similar Schools EL	Similar Schools Disab
2003-4	NA	NA	NA	NA	NA	NA	NA
2004-5	NA	NA	NA	NA	NA	NA	NA
2005-6	7	NA	NA	NA	NA	NA	NA
2006-7	7	NA	NA	NA	NA	NA	NA
2007-8	7	NA	NA	NA	NA	NA	NA

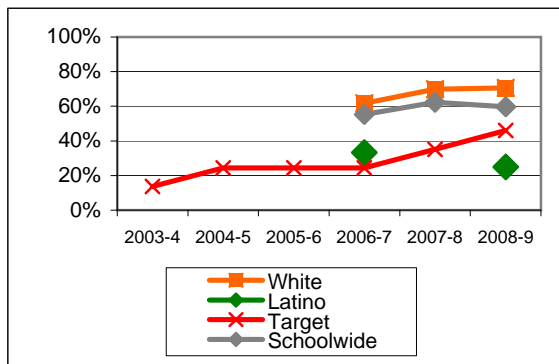


Exceed Federal Adequate Yearly Progress (AYP) Accountability Goals (Blue = Not enough students, ***Bold/underline/italic*** = Made by adjustment, **Red** = Did not pass)

English Language Arts (ELA): Percent Proficient or Higher (based on CST exams)	State Targets	Schoolw ide	Latino	White	Socio- Econ Disadv	English Learner	Stud with Disab
2003-4	13.6%						
2004-5	24.4%						
2005-6	24.4%						
2006-7	24.4%	55.3%	33.3%	61.7%	27.3%		
2007-8	35.2%	62.2%		69.8%			
2008-9	46.0%	59.7%	25.0%	70.7%	25.0%		
State Averages 2-12, 2008-09		52.4%	39.2%	70.3%	38.6%	33.5%	30.7%
2009-10	56.8%						

Math: Percent Proficient or Higher (Based on CST exams)	State Targets	Schoolw ide	Latino	White	Socio- Econ Disadv	English Learner	Stud with Disab
2003-4	16.0%						
2004-5	26.5%						
2005-6	26.5%						
2006-7	26.5%	27.8%	19.0%	32.0%	18.2%		
2007-8	37.0%	31.0%		33.3%			
2008-9	47.5%	33.9%	8.3%	38.5%	25.0%		
State Averages 2-12, 2008-09		54.5%	44.0%	67.6%	43.9%	43.0%	32.3%
2009-10	58.0%						

ELA

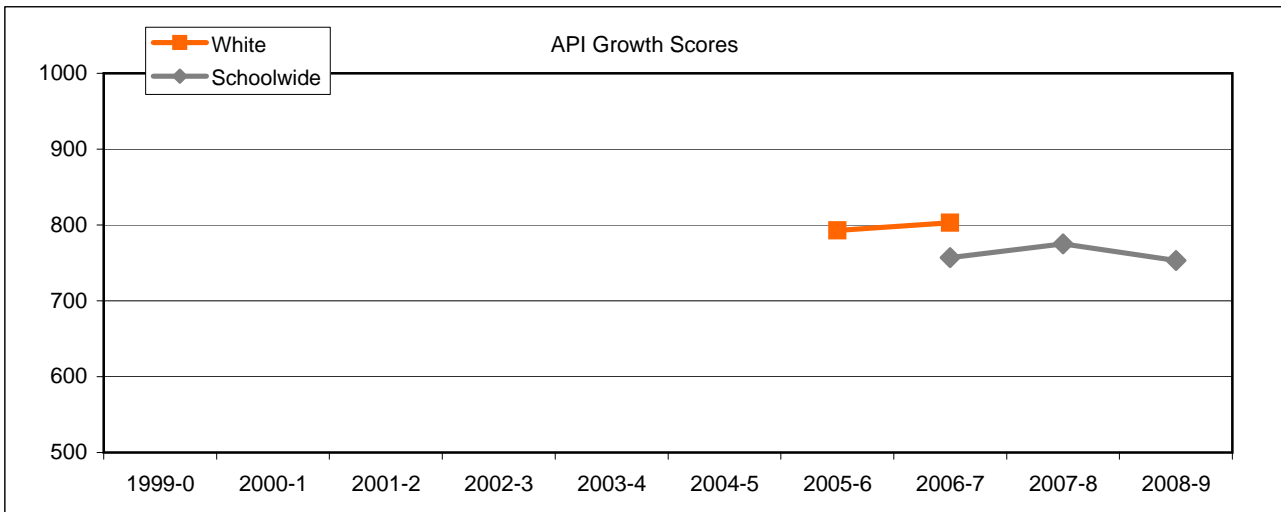


Math



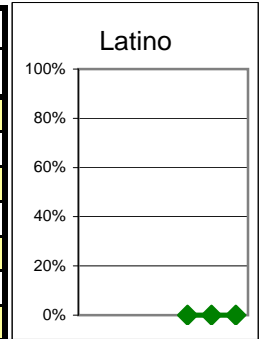
Exceed State Academic Performance Index (API) Growth Goals

	Schoolwide			Latino			White		
	Base	Growth/ Goal Met	State API (7-8)	Base	Growth/ Goal Met	State API (7-8)	Base	Growth/ Goal Met	State API (7-8)
2003-4									
2004-5									
2005-6			715			642			805
2006-7	766	757 NotMet	720			651		793 Met	807
2007-8	757	775 Met	735			669	793	803 Met	818
2008-9	783	753 NotMet	754			690	814		833



Increase Participation Across Demographic Spectrum in Advanced Courses

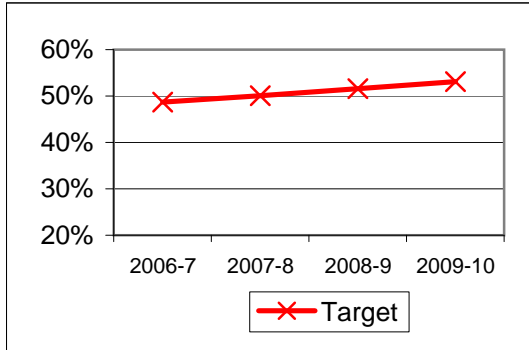
GATE (percent of all GATE students)	Latino		White		All Others	
	Number	Percent	Number	Percent	Number	Percent
2003-4						
2004-5						
2005-6						
2006-7						
2007-8	0	0.0%	1	100.0%	0	0.0%
2008-9	0	0.0%	1	100.0%	0	0.0%
2009-10	0	0.0%	0	0.0%	0	0.0%



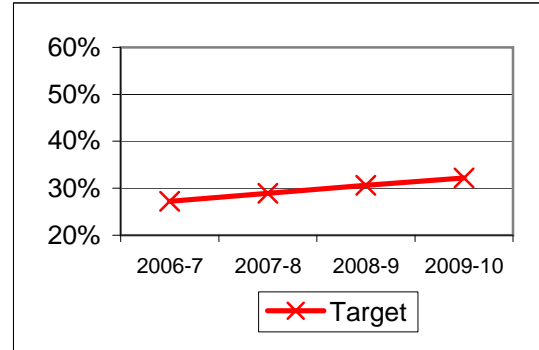
Progress on English Learners Gaining One Proficiency Level Annually and Attaining English Language Proficiency

	Gained One Level On CELDT		Attained English Proficiency		
	Target	Score	Target	Score	
2003-4					
2004-5					
2005-6					
2006-7	48.7%		27.2%		New Norms
2007-8	50.1%		28.9%		
2008-9	51.6%		30.6%		
2009-10	53.1%		32.2%		

Gained One Level On CELDT

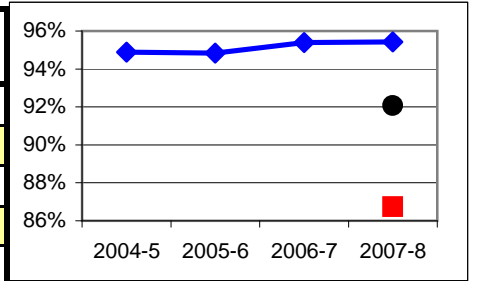


Attained English Proficiency



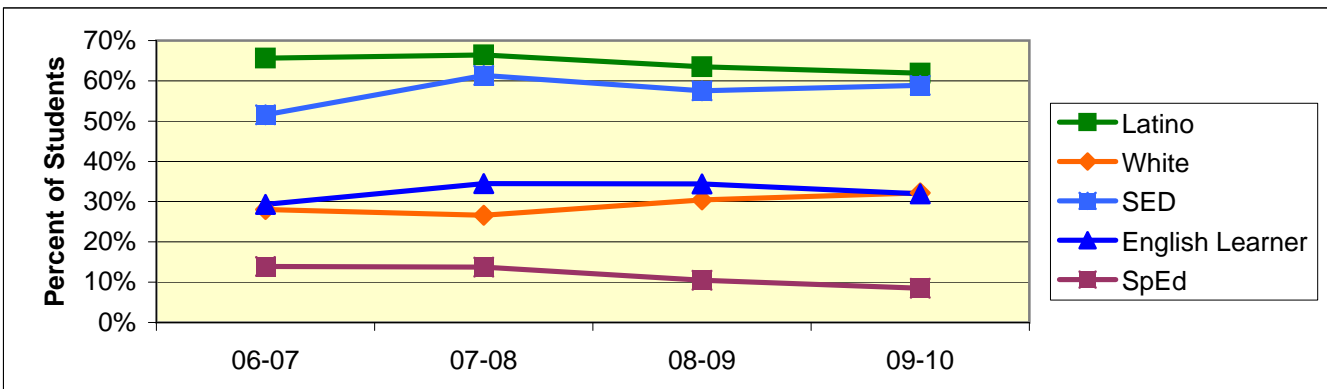
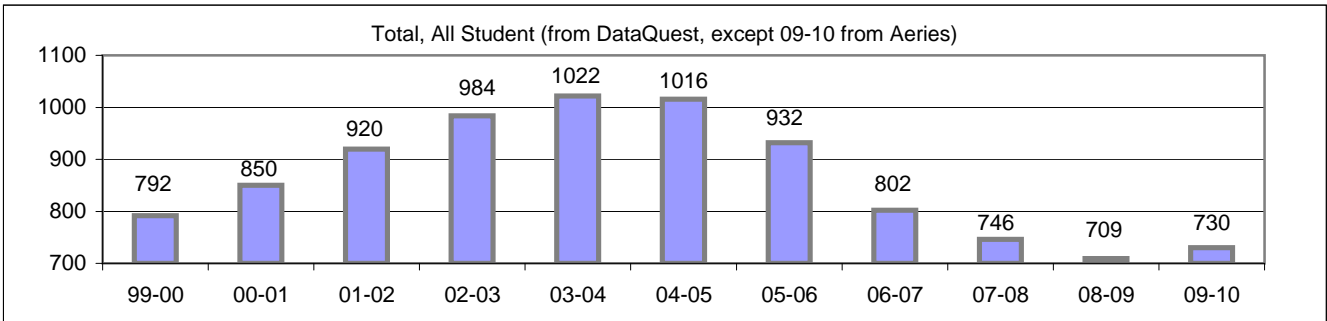
Increase Efforts to Enhance Revenue

Attendance (Percent over year)	Lowest Month	Whole Year	District
2004-5			94.9%
2005-6			94.8%
2006-7			95.4%
2007-8	86.7%	92.1%	95.4%
2008-9			



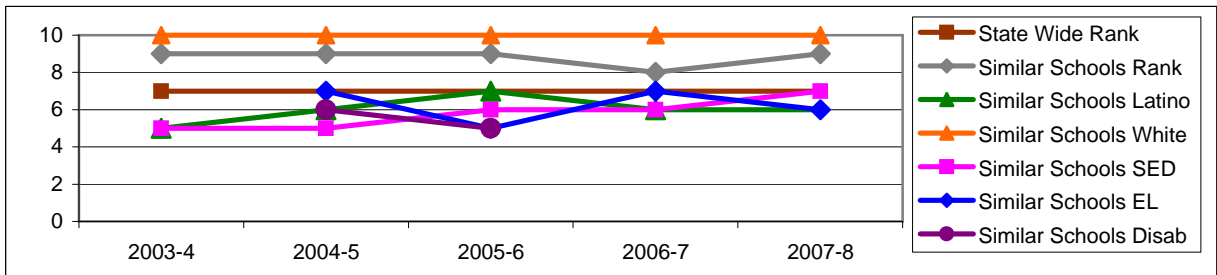
Board Focus Goals: Santa Barbara Junior High (5) - January 2010

Demographics (7-8, Jan 2010, Aeries)	Total	Female	Male	Latino	White	SED	English Learner	SpEd
Number	730	358	372	452	235	430	233	62
Percent of Total		49.0%	51.0%	61.9%	32.2%	58.9%	31.9%	8.5%



Achieve a State Similar School Ranking of 8 or Higher (scale = 1-10)

	State Wide Rank	Similar Schools Rank	Similar Schools Latino	Similar Schools White	Similar Schools SED	Similar Schools EL	Similar Schools Disab
2003-4	7	9	5	10	5	NA	NA
2004-5	7	9	6	10	5	7	6
2005-6	7	9	7	10	6	5	5
2006-7	7	8	6	10	6	7	NA
2007-8	7	9	6	10	7	6	NA

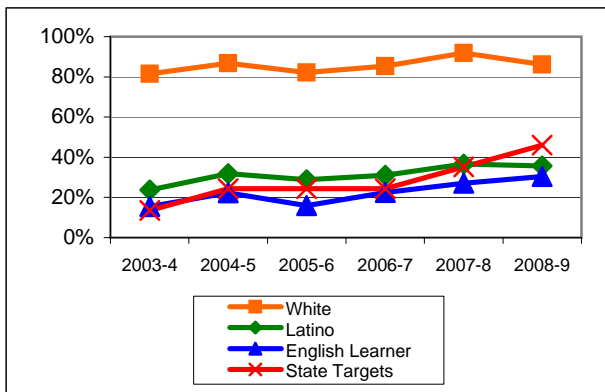


Exceed Federal Adequate Yearly Progress (AYP) Accountability Goals (Blue = Not enough students, **Bold/underline/italic** = Made by adjustment, Red = Did not pass

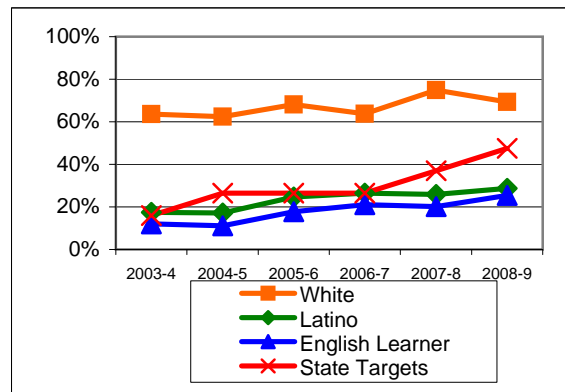
English Language Arts (ELA): Percent Proficient or Higher (based on CST exams)	State Targets	Schoolwide	Latino	White	Socio-Econ Disadv	English Learner	Stud with Disab	
2003-4	13.6%	45.8%	23.7%	81.6%	21.7%	15.5%	6.0%	Mark 2
2004-5	24.4%	51.3%	31.9%	86.8%	30.1%	<u>22.3%</u>	4.1%	PI Y1
2005-6	24.4%	48.3%	28.8%	82.1%	27.0%	16.0%	5.6%	PI Y2
2006-7	24.4%	48.9%	31.1%	85.4%	28.6%	<u>22.5%</u>	4.2%	PI Y3
2007-8	35.2%	54.5%	36.6%	91.8%	36.7%	27.0%	11.0%	PI Y4
2008-9	46.0%	52.5%	35.6%	86.1%	36.3%	30.4%	16.4%	PI Y5
State Averages 2-12, 2008-09		52.4%	39.2%	70.3%	38.6%	33.5%	30.7%	
2009-10	56.8%							PI Y5

Math: Percent Proficient or Higher (Based on CST exams)	State Targets	Schoolwide	Latino	White	Socio-Econ Disadv	English Learner	Stud with Disab	
2003-4	16.0%	35.3%	17.5%	63.6%	15.8%	12.0%	4.3%	Mark 2
2004-5	26.5%	33.1%	17.1%	62.4%	16.0%	11.1%	3.3%	PI Y1
2005-6	26.5%	40.3%	<u>24.6%</u>	68.1%	<u>24.5%</u>	17.7%	4.7%	PI Y2
2006-7	26.5%	39.2%	26.5%	63.8%	25.6%	21.0%	9.4%	PI Y3
2007-8	37.0%	41.8%	25.9%	74.9%	26.8%	20.2%	7.8%	PI Y4
2008-9	47.5%	42.3%	28.7%	69.3%	28.7%	25.4%	11.0%	PI Y5
State Averages 2-12, 2008-09		54.5%	44.0%	67.6%	43.9%	43.0%	32.3%	
2009-10	58.0%							PI Y5

ELA

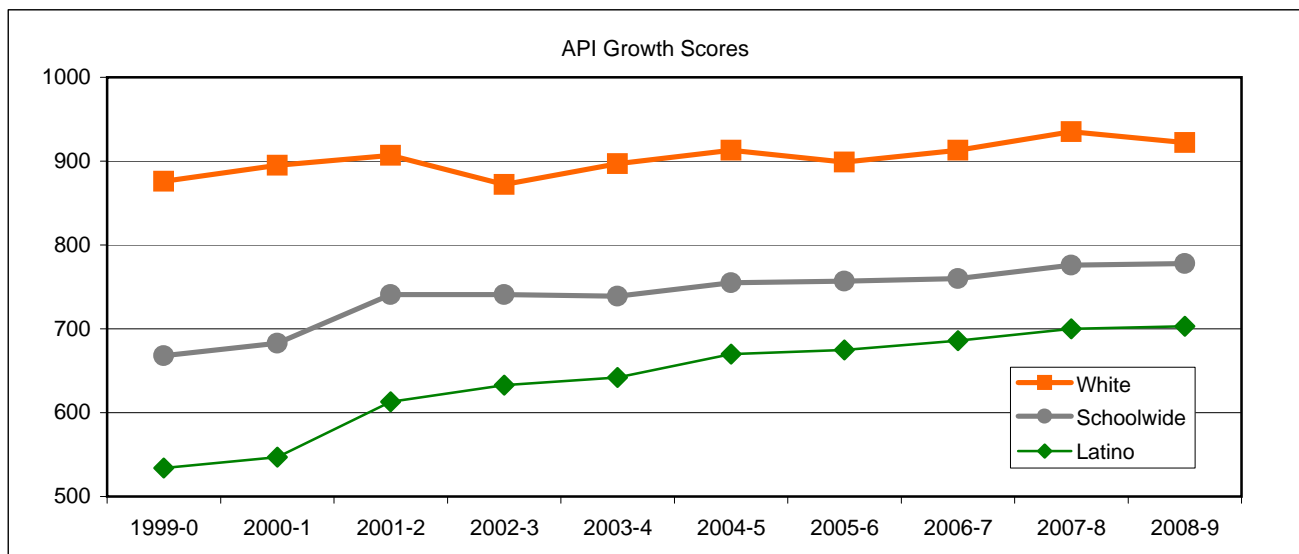


Math



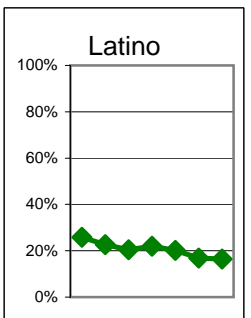
Exceed State Academic Performance Index (API) Growth Goals

	Schoolwide			Latino			White		
	Base	Growth/ Goal Met	State API (7-8)	Base	Growth/ Goal Met	State API (7-8)	Base	Growth/ Goal Met	State API (7-8)
2003-4	746	739 NotMet		637	642 Met		878	897 Met	
2004-5	738	755 Met		643	670 Met		894	913 Met	
2005-6	755	757 Met	715	670	675 Met	642	913	899 Met	805
2006-7	763	760 NotMet	720	681	686 NotMet	651	901	913 Met	807
2007-8	760	776 Met	735	686	700 Met	669	913	935 Met	818
2008-9	791	778 NotMet	754	717	703 NotMet	690	941	922 Met	833



Increase Participation Across Demographic Spectrum in Advanced Courses

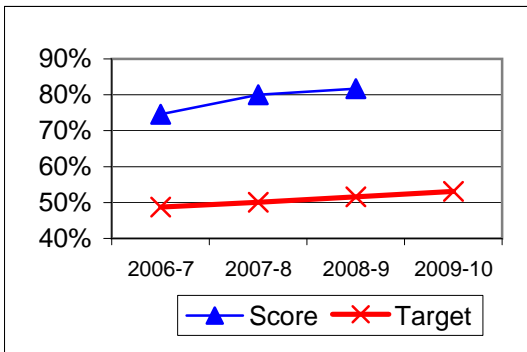
GATE (percent of all GATE students)	Latino		White		All Others	
	Number	Percent	Number	Percent	Number	Percent
2003-4	46	25.8%	120	67.4%	12	6.7%
2004-5	55	22.6%	169	69.5%	19	7.8%
2005-6	43	20.4%	150	71.1%	18	8.5%
2006-7	31	22.0%	91	64.5%	19	13.5%
2007-8	29	20.1%	97	67.4%	18	12.5%
2008-9	21	16.8%	93	74.4%	11	8.8%
2009-10	23	16.4%	106	75.7%	11	7.9%



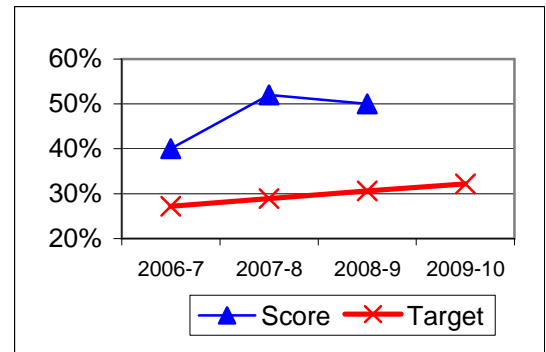
Progress on English Learners Gaining One Proficiency Level Annually and Attaining English Language Proficiency

	Gained One Level On CELDT		Attained English Proficiency		
	Target	Score	Target	Score	
2003-4	51.0%		30.0%		
2004-5	51.5%	84.9%	30.7%	68.3%	
2005-6	52.0%	82.4%	31.4%	63.9%	
2006-7	48.7%	74.6%	27.2%	40.0%	New Norms
2007-8	50.1%	80.0%	28.9%	52.0%	
2008-9	51.6%	81.7%	30.6%	50.0%	
2009-10	53.1%		32.2%		

Gained One Level On CELDT

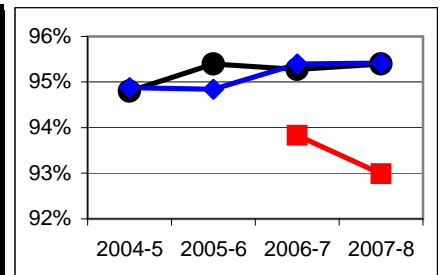


Attained English Proficiency



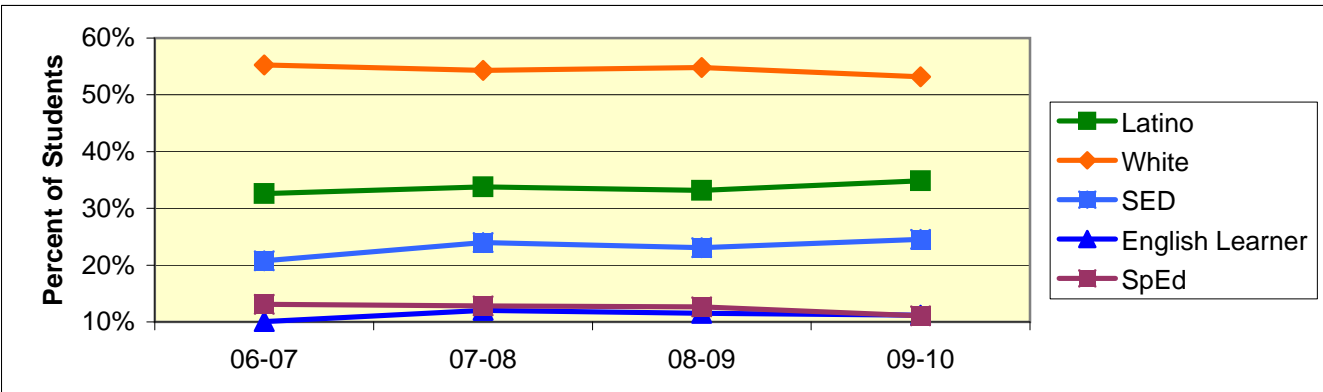
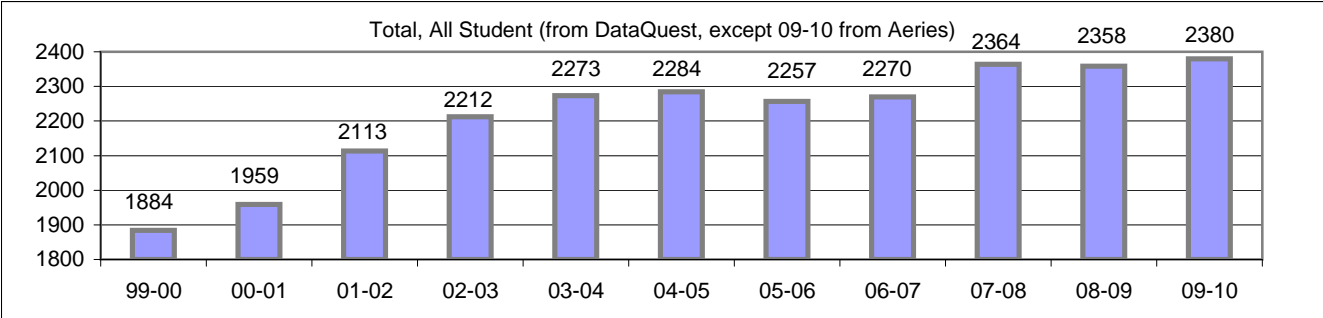
Increase Efforts to Enhance Revenue

Attendance (Percent over year)	Lowest Month	Whole Year	District
2004-5		94.8%	94.9%
2005-6		95.4%	94.8%
2006-7	93.8%	95.3%	95.4%
2007-8	93.0%	95.4%	95.4%



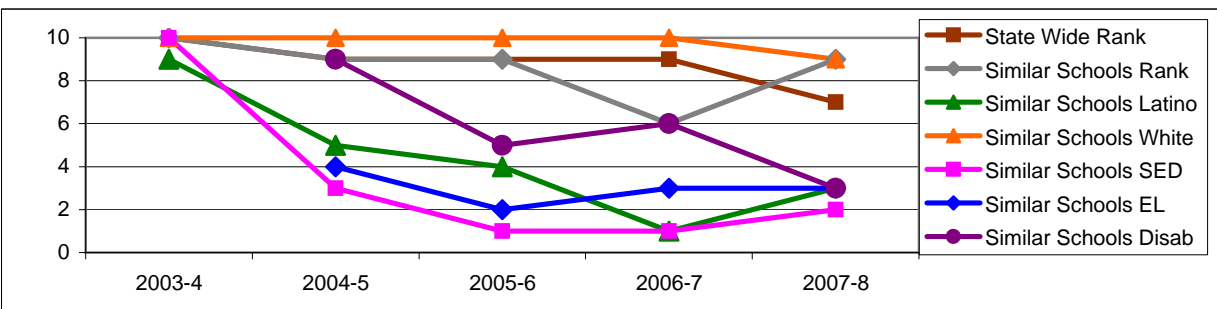
Board Focus Goals: Dos Pueblos High School (7) - January 2010

Demographics (9-12, Jan 2010, Aeries)	Total	Female	Male	Latino	White	SED	English Learner	SpEd
Number	2380	1152	1228	830	1265	584	266	264
Percent of Total		48.4%	51.6%	34.9%	53.2%	24.5%	11.2%	11.1%



Achieve a State Similar School Ranking of 8 or Higher (scale = 1-10)

	State Wide Rank	Similar Schools Rank	Similar Schools Latino	Similar Schools White	Similar Schools SED	Similar Schools EL	Similar Schools Disab
2003-4	10	10	9	10	10	NA	NA
2004-5	9	9	5	10	3	4	9
2005-6	9	9	4	10	1	2	5
2006-7	9	6	1	10	1	3	6
2007-8	7	9	3	9	2	3	3



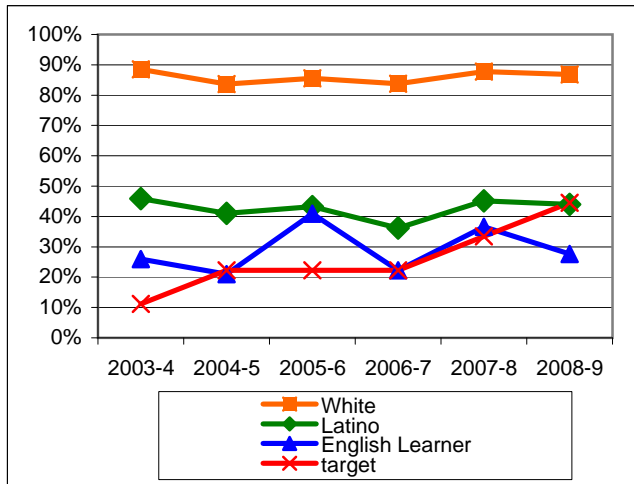
Exceed Federal Adequate Yearly Progress (AYP) Accountability Goals (Blue = Not enough students, Bold/underline/italic = Made by adjustment, Red = Did not pass

English Language Arts (ELA): Percent Proficient or Higher (Based on 10th grade Exit Exam (CAHSEE), Federal Cut Points)	State Targets	Schoolwide	Latino	White	Socio-Econ Disadv	English Learner	Stud with Disab
2003-4	11.2%	73.1%	45.9%	88.5%	41.0%	26.0%	31.3%
2004-5	22.3%	70.5%	41.0%	83.7%	29.0%	21.0%	17.3%
2005-6	22.3%	71.4%	43.3%	85.6%	31.3%	40.9%	13.8%
2006-7	22.3%	68.9%	36.2%	83.8%	30.6%	22.3%	19.4%
2007-8	33.4%	71.0%	45.1%	87.8%	40.5%	36.6%	19.4%
2008-9	44.5%	72.3%	<u>44.0%</u>	86.8%	38.2%	27.6%	25.6%
State Averages 2-12, 2008-09		52.4%	39.2%	70.3%	38.6%	33.5%	30.7%
2009-10	55.6%						

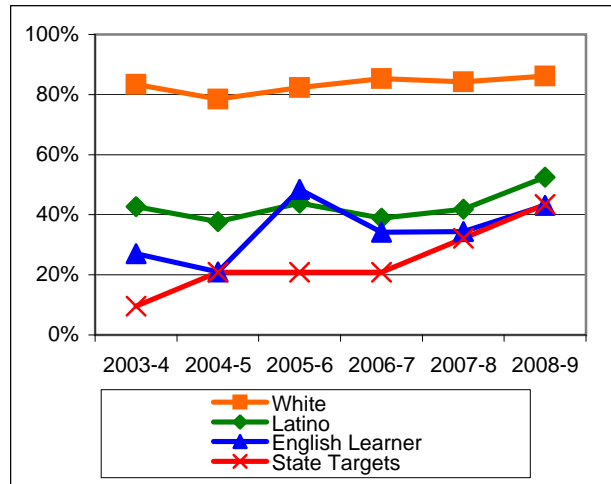
Mark 1

Math: Percent Proficient or Higher (Based on 10th grade Exit Exam (CAHSEE), Federal Cut Points)	State Targets	Schoolwide	Latino	White	Socio-Econ Disadv	English Learner	Stud with Disab
2003-4	9.6%	69.6%	42.7%	83.4%	45.0%	27.1%	26.8%
2004-5	20.9%	64.8%	37.7%	78.5%	25.3%	21.0%	17.8%
2005-6	20.9%	70.8%	43.9%	82.3%	42.3%	48.5%	15.8%
2006-7	20.9%	70.5%	38.9%	85.3%	35.3%	34.2%	19.7%
2007-8	32.2%	68.9%	41.8%	84.2%	42.5%	34.4%	21.5%
2008-9	43.5%	75.1%	52.5%	86.2%	49.7%	<u>43.1%</u>	32.1%
State Averages 2-12, 2008-09		54.5%	44.0%	67.6%	43.9%	43.0%	32.3%
2009-10	54.8%						

ELA

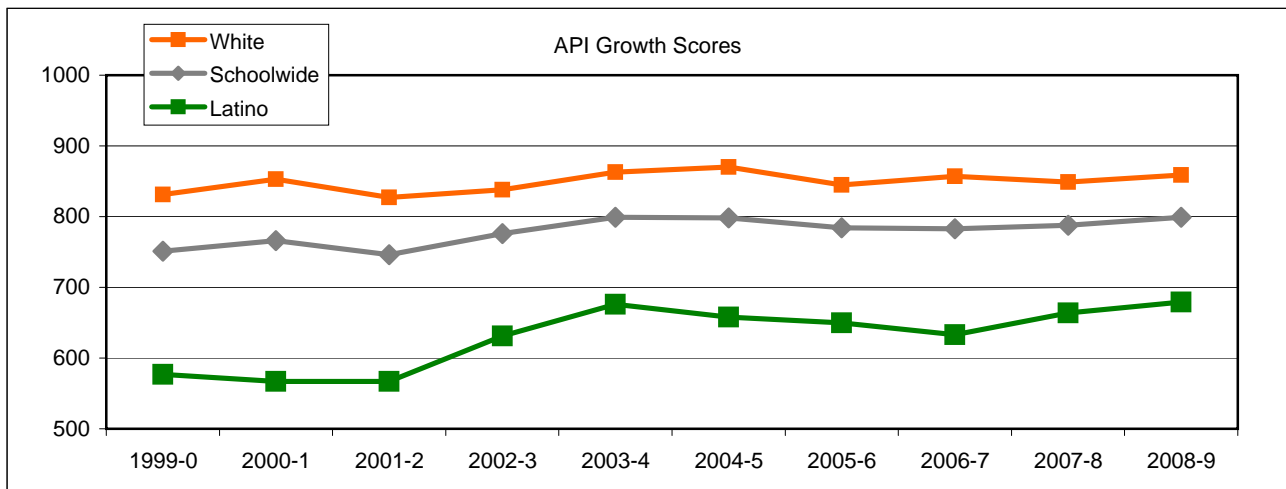


Math



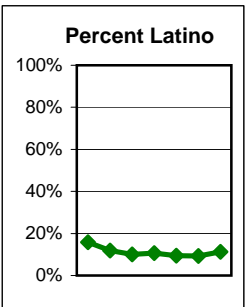
Exceed State Academic Performance Index (API) Growth Goals

	Schoolwide			Latino			White		
	Base	Growth/ Goal Met	State API (9-11)	Base	Growth/ Goal Met	State API (9-11)	Base	Growth/ Goal Met	State API (9-11)
2003-4	746	799 Met		603	676 Met		807	863 Met	
2004-5	814	798 Not Met		698	658 Not Met		872	870 Met	
2005-6	798	784 Not Met	680	658	650 Not Met	609	870	845 Met	755
2006-7	792	783 Not Met	689	659	633 Not Met	621	851	857 Met	765
2007-8	783	788 Met	702	633	664 Met	638	857	849 Met	776
2008-9	788	799 Met	713	664	679 Met	651	849	859 Met	788



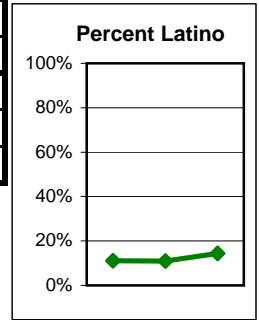
Increase Participation Across Demographic Spectrum in Advanced Courses (Percent of Students in Category)

GATE (percent of all GATE students)	Latino		White		All Others	
	Number	Percent	Number	Percent	Number	Percent
2003-4	44	15.9%	194	70.0%	39	14.1%
2004-5	53	11.8%	337	75.1%	59	13.1%
2005-6	61	10.1%	457	75.8%	85	14.1%
2006-7	68	10.6%	475	74.5%	95	14.9%
2007-8	62	9.4%	499	75.4%	101	15.3%
2008-9	61	9.3%	493	75.0%	103	15.7%
2009-10	73	11.3%	465	72.1%	107	16.6%

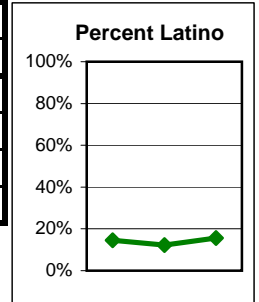


Dos Pueblos High Continued

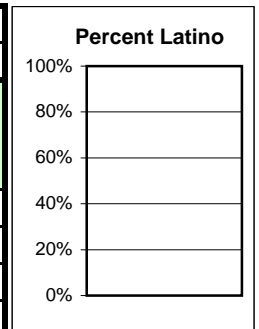
AP (Number taking at least 1 class)	Latino		White		All Others	
	Number	Percent	Number	Percent	Number	Percent
2006-7	68	11.1%	448	73.1%	97	15.8%
2007-8	64	11.0%	415	71.1%	105	18.0%
2008-9	91	14.4%	438	69.1%	105	16.6%



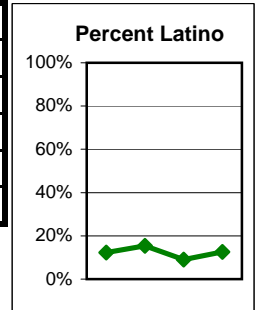
Honors (Number taking at least 1 class)	Latino		White		All Others	
	Number	Percent	Number	Percent	Number	Percent
2006-7	160	14.6%	771	70.3%	166	15.1%
2007-8	129	12.3%	755	71.8%	168	16.0%
2008-9	174	15.6%	774	69.4%	167	15.0%
2009-10						



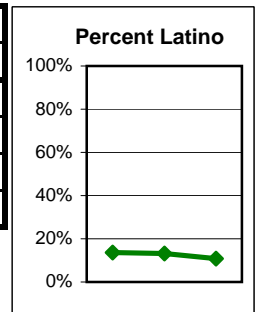
Engineering Academy (Number taking at least 1 class)	Latino		White		All Others	
	Number	Percent	Number	Percent	Number	Percent
2003-4	We are in the process of updating how we track students in this program. As of now, the data in Aeries cannot report actual student numbers based on practices at the school.					
2004-5						
2005-6						
2006-7						
2007-8						
2008-9						
2009-10						



International Baccalaureate (Number taking at least 1 class)	Latino		White		All Others	
	Number	Percent	Number	Percent	Number	Percent
2006-7	16	12.2%	99	75.6%	16	12.2%
2007-8	25	15.3%	120	73.6%	18	11.0%
2008-9	16	9.1%	131	74.4%	29	16.5%
2009-10	23	12.6%	126	68.9%	34	18.6%



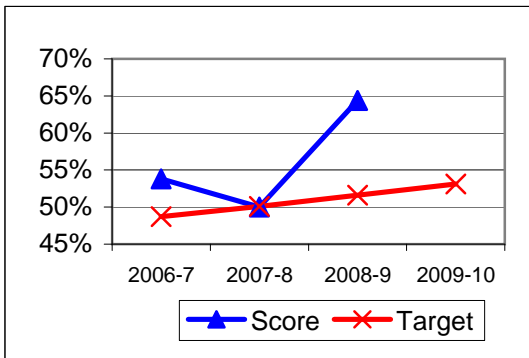
Dual Enrollment (Number taking at least 1 class)	Latino		White		All Others	
	Number	Percent	Number	Percent	Number	Percent
2006-7	56	13.7%	295	72.1%	58	14.2%
2007-8	57	13.3%	296	68.8%	77	17.9%
2008-9	36	10.9%	219	66.2%	76	23.0%
2009-10						



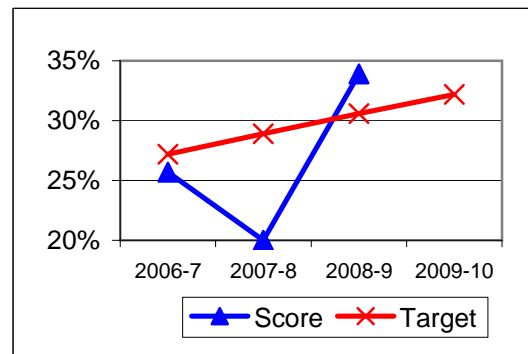
Progress on English Learners Gaining One Proficiency Level Annually and Attaining English Language Proficiency

	Gained One Level On CELDT		Attained English Proficiency		
	Target	Score	Target	Score	
2003-4	51.0%		30.0%		
2004-5	51.5%	71.4%	30.7%	38.2%	
2005-6	52.0%	76.3%	31.4%	37.7%	
2006-7	48.7%	53.8%	27.2%	25.7%	New Norms
2007-8	50.1%	50.0%	28.9%	20.0%	
2008-9	51.6%	64.4%	30.6%	33.9%	
2009-10	53.1%		32.2%		

Gained One Level On CELDT

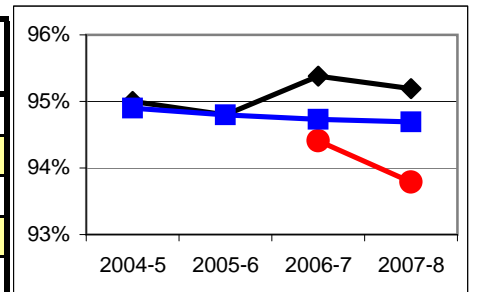


Attained English Proficiency



Increase Efforts to Enhance Revenue

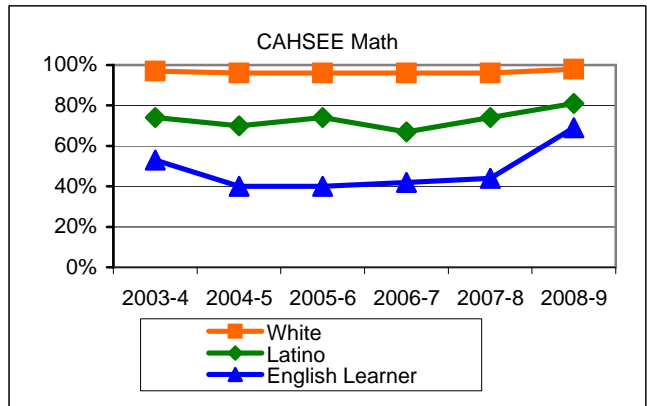
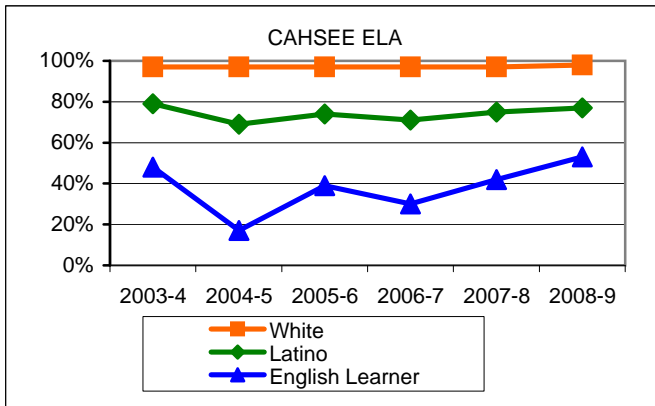
Attendance (Percent over year)	Lowest Month	Whole Year	District
2004-5		95.0%	94.9%
2005-6		94.8%	94.8%
2006-7	94.4%	95.4%	94.7%
2007-8	93.8%	95.2%	94.7%
2008-9			



Preparing Students to Pass the High School Exit Exam (CAHSEE)

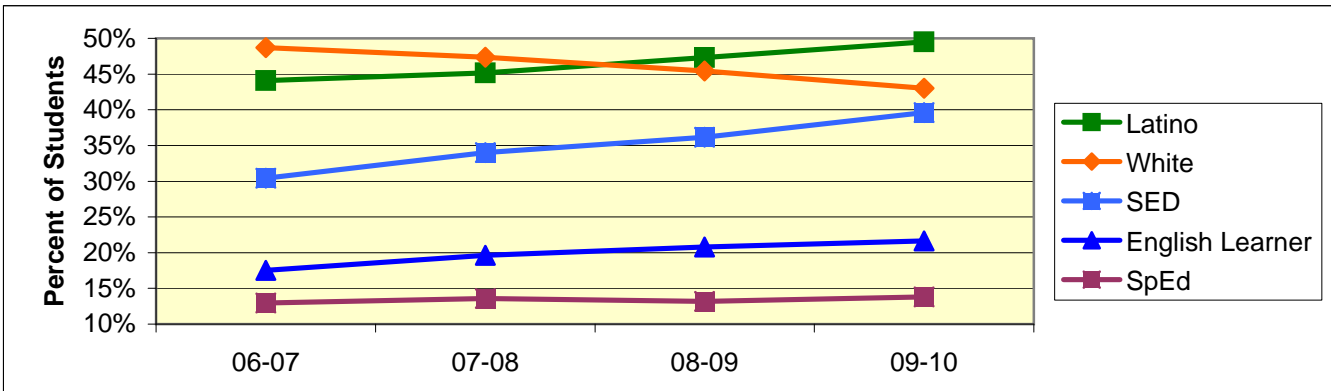
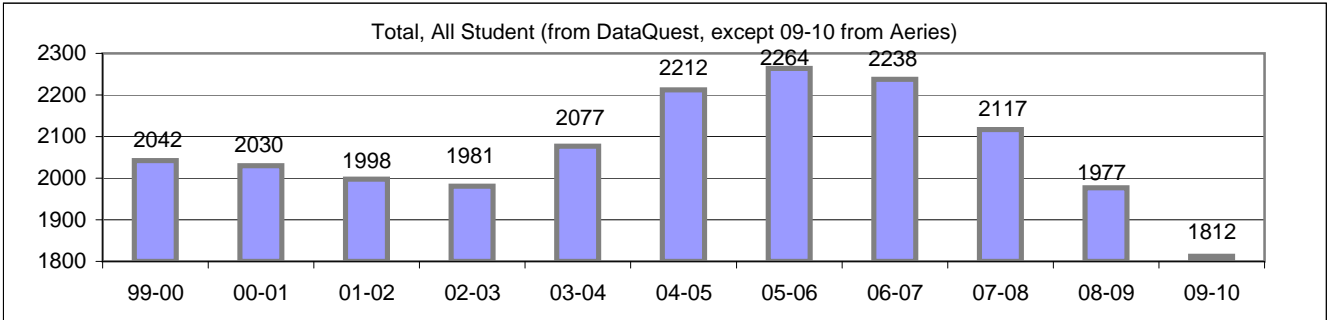
English Language Arts (ELA), March and May in that year, 10th grade only, California cut points (dataquest)	School wide	Latino	White	Socio-Econ Disadv	English Learner	Stud with Disab	State wide
2003-4	90.0%	79.0%	97.0%	75.0%	48.0%	58.0%	75.0%
2004-5	88.0%	69.0%	97.0%	62.0%	17.0%	54.0%	76.0%
2005-6	89.0%	74.0%	97.0%	68.0%	39.0%	51.0%	77.0%
2006-7	89.0%	71.0%	97.0%	66.0%	30.0%	50.0%	77.0%
2007-8	89.0%	75.0%	97.0%	71.0%	42.0%	48.0%	79.0%
2008-9	90.0%	77.0%	98.0%	72.0%	53.0%	65.0%	79.0%

Math, March and May in that year, 10th grade only, California cut points (dataquest)	School wide	Latino	White	Socio-Econ Disadv	English Learner	Stud with Disab	State wide
2003-4	89.0%	74.0%	97.0%	75.0%	53.0%	51.0%	74.0%
2004-5	87.0%	70.0%	96.0%	62.0%	40.0%	57.0%	74.0%
2005-6	88.0%	74.0%	96.0%	62.0%	40.0%	38.0%	76.0%
2006-7	87.0%	67.0%	96.0%	67.0%	42.0%	39.0%	76.0%
2007-8	88.0%	74.0%	96.0%	71.0%	44.0%	43.0%	78.0%
2008-9	92.0%	81.0%	98.0%	78.0%	69.0%	63.0%	80.0%



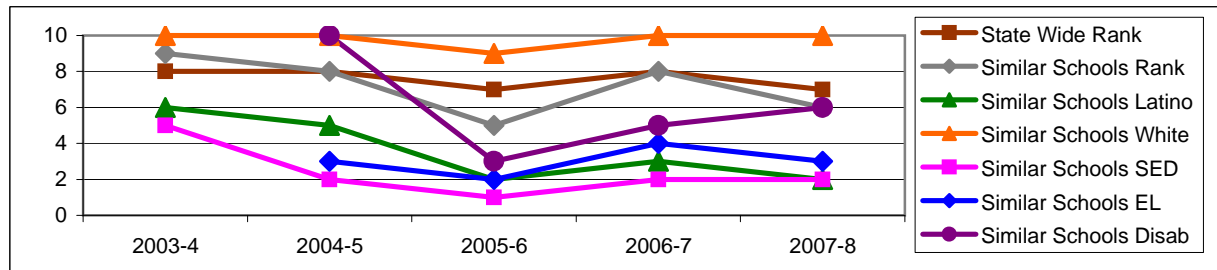
Board Focus Goals: San Marcos High School (3) - January 2010

Demographics (9-12, Jan 2010, Aeries)	Total	Female	Male	Latino	White	SED	English Learner	SpEd
Number	1812	904	908	897	779	718	392	250
Percent of Total		49.9%	50.1%	49.5%	43.0%	39.6%	21.6%	13.8%



Achieve a State Similar School Ranking of 8 or Higher (scale = 1-10)

	State Wide Rank	Similar Schools Rank	Similar Schools Latino	Similar Schools White	Similar Schools SED	Similar Schools EL	Similar Schools Disab
2003-4	8	9	6	10	5	NA	NA
2004-5	8	8	5	10	2	3	10
2005-6	7	5	2	9	1	2	3
2006-7	8	8	3	10	2	4	5
2007-8	7	6	2	10	2	3	6

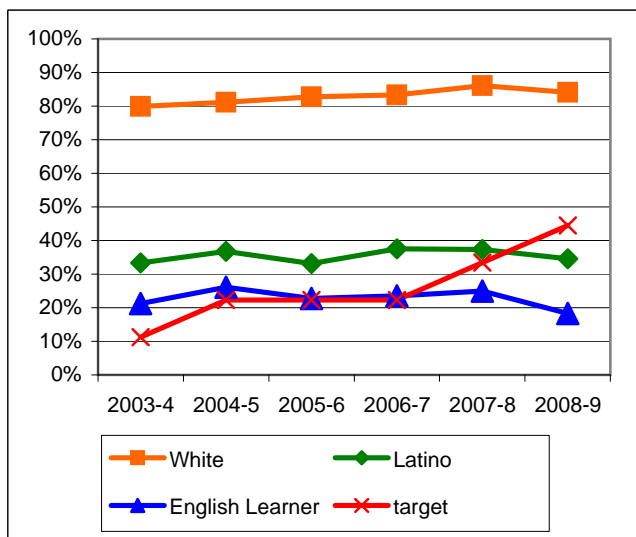


Exceed Federal Adequate Yearly Progress (AYP) Accountability Goals (Blue = Not enough students, **Bold/underline/italic** = Made by adjustment, **Red** = Did not pass)

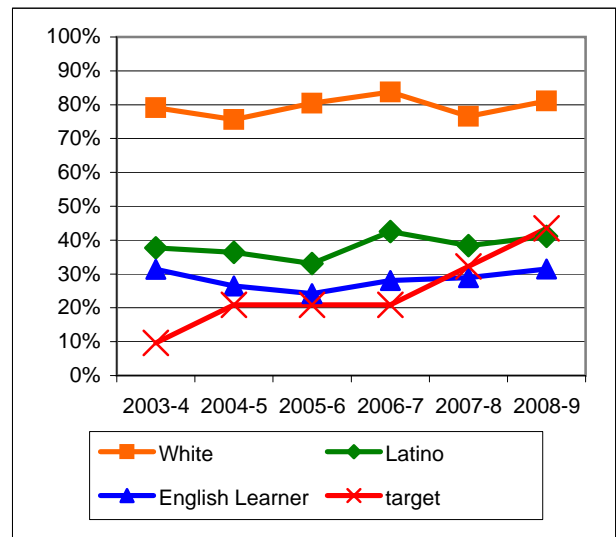
English Language Arts (ELA): Percent Proficient or Higher (Based on 10th grade Exit Exam (CAHSEE), Federal Cut Points)	State Targets	Schoolwide	Latino	White	Socio-Econ Disadv	English Learner	Stud with Disab	
2003-4	11.2%	61.3%	33.3%	79.9%	30.5%	21.2%	20.6%	
2004-5	22.3%	62.0%	36.8%	81.1%	30.7%	26.1%	37.7%	
2005-6	22.3%	60.0%	33.1%	82.8%	28.4%	22.8%	5.3%	
2006-7	22.3%	61.5%	37.5%	83.3%	32.2%	23.5%	19.7%	
2007-8	33.4%	65.4%	37.3%	86.1%	35.3%	25.0%	35.3%	Mark 1
2008-9	44.5%	60.2%	34.6%	84.1%	35.8%	18.3%	17.7%	Mark 2
State Averages 2-12, 2008-09		52.4%	39.2%	70.3%	38.6%	33.5%	30.7%	
2009-10	55.6%							PI Y1

Math: Percent Proficient or Higher (Based on 10th grade Exit Exam (CAHSEE), Federal Cut Points)	State Targets	Schoolwide	Latino	White	Socio-Econ Disadv	English Learner	Stud with Disab	
2003-4	9.6%	62.2%	37.7%	79.1%	37.5%	31.4%	22.2%	
2004-5	20.9%	59.5%	36.4%	75.6%	31.7%	26.5%	30.0%	
2005-6	20.9%	59.0%	33.1%	80.4%	30.4%	24.2%	7.3%	
2006-7	20.9%	64.3%	42.5%	83.7%	38.7%	28.1%	17.9%	
2007-8	32.2%	61.2%	38.4%	76.6%	38.7%	28.9%	30.9%	Mark 1
2008-9	43.5%	62.2%	41.1%	81.1%	41.3%	31.5%	19.4%	Mark 2
State Averages 2-12, 2008-09		54.5%	44.0%	67.6%	43.9%	43.0%	32.3%	
2009-10	54.8%							PI Y1

ELA

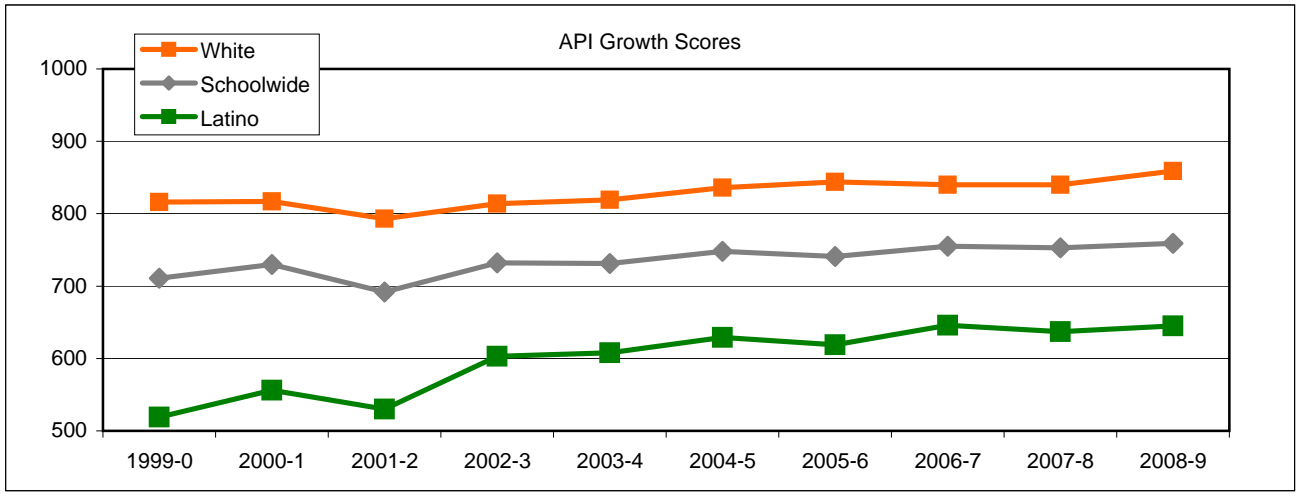


Math



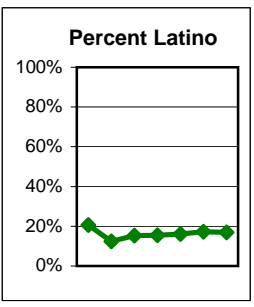
Exceed State Academic Performance Index (API) Growth Goals

	Schoolwide			Latino			White		
	Base	Growth/ Goal Met	State API (9-11)	Base	Growth/ Goal Met	State API (9-11)	Base	Growth/ Goal Met	State API (9-11)
2003-4	717	731 Met		583	608 Met		805	819 Met	
2004-5	741	748 Met		624	629 Met		825	836 Met	
2005-6	749	741 NotMet	680	629	619 NotMet	609	836	844 Met	755
2006-7	727	755 Met	689	608	646 Met	621	826	840 Met	765
2007-8	755	753 NotMet	702	646	637 NotMet	638	840	840 Met	776
2008-9	753	759 Met	713	637	645 Met	651	840	859 Met	788



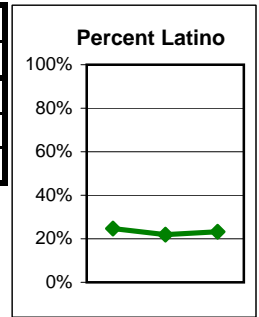
Increase Participation Across Demographic Spectrum in Advanced Courses (Percent of Students in Category)

GATE	Latino		White		All Others	
	Number	Percent	Number	Percent	Number	Percent
2003-4	56	20.7%	194	71.6%	21	7.7%
2004-5	53	12.4%	328	77.0%	45	10.6%
2005-6	88	15.3%	434	75.2%	55	9.5%
2006-7	88	15.5%	425	74.7%	56	9.8%
2007-8	85	16.1%	390	73.7%	54	10.2%
2008-9	85	17.2%	359	72.7%	50	10.1%
2009-10	74	16.9%	322	73.5%	42	9.6%

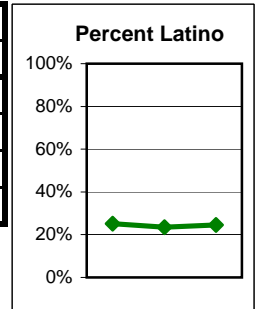


San Marcos High Continued

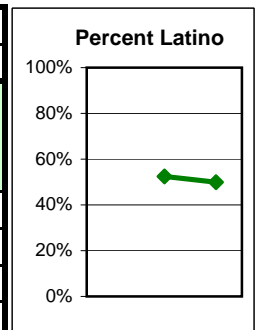
AP (Number taking at least 1 class)	Latino		White		All Others	
	Number	Percent	Number	Percent	Number	Percent
2006-7	106	24.7%	281	65.3%	43	10.0%
2007-8	99	21.9%	309	68.4%	44	9.7%
2008-9	104	23.2%	294	65.5%	51	11.4%



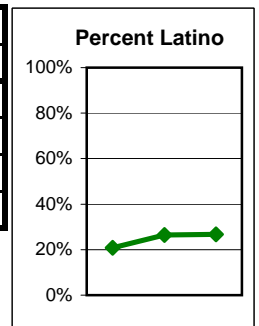
Honors (Number taking at least 1 class)	Latino		White		All Others	
	Number	Percent	Number	Percent	Number	Percent
2006-7	243	25.2%	632	65.5%	90	9.3%
2007-8	210	23.5%	598	67.0%	84	9.4%
2008-9	200	24.6%	534	65.6%	80	9.8%
2009-10						



Health Academy (Number taking at least 1 class)	Latino		White		All Others	
	Number	Percent	Number	Percent	Number	Percent
2003-4	We are in the process of updating how we track students in this program. As of now, the data in Aeries cannot report good student numbers based on practices at the school.					
2004-5						
2005-6						
2006-7						
2007-8	42	52.5%	31	38.8%	7	8.8%
2008-9	44	50.0%	36	40.9%	8	9.1%
2009-10						



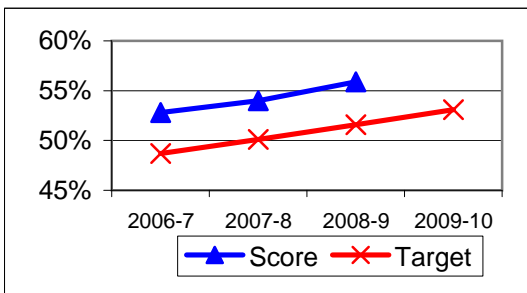
Dual Enrollment (Number taking at least 1 class)	Latino		White		All Others	
	Number	Percent	Number	Percent	Number	Percent
2006-7	57	20.8%	185	67.5%	32	11.7%
2007-8	81	26.5%	197	64.4%	28	9.2%
2008-9	76	26.8%	186	65.5%	22	7.7%
2009-10						



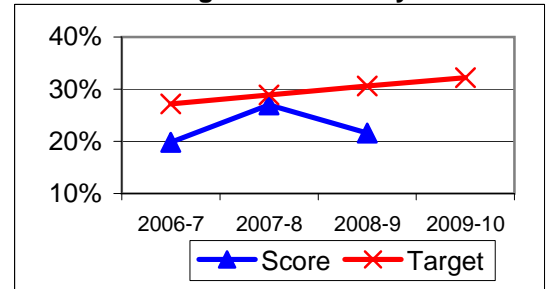
Progress on English Learners Gaining One Proficiency Level Annually and Attaining English Language Proficiency

	Gained One Level On CELDT		Attained English Proficiency		
	Target	Score	Target	Score	
2003-4	51.0%		30.0%		
2004-5	51.5%	72.0%	30.7%	37.9%	
2005-6	52.0%	74.9%	31.4%	47.2%	
2006-7	48.7%	52.8%	27.2%	19.8%	New Norms
2007-8	50.1%	54.0%	28.9%	27.0%	
2008-9	51.6%	55.9%	30.6%	21.6%	
2009-10	53.1%		32.2%		

Gained One Level On CELDT

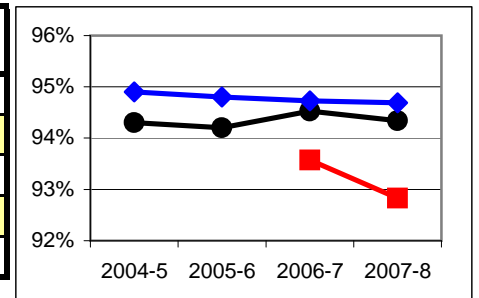


Attained English Proficiency



Increase Efforts to Enhance Revenue

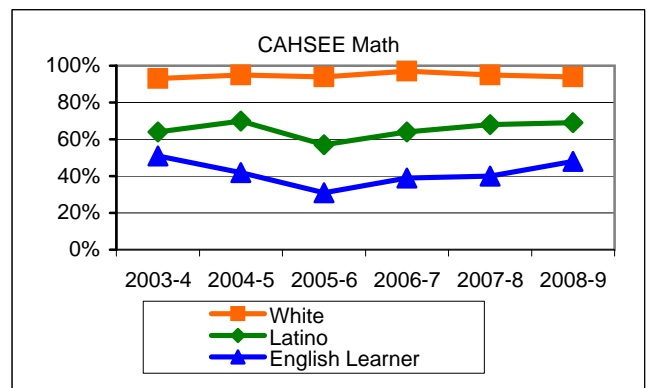
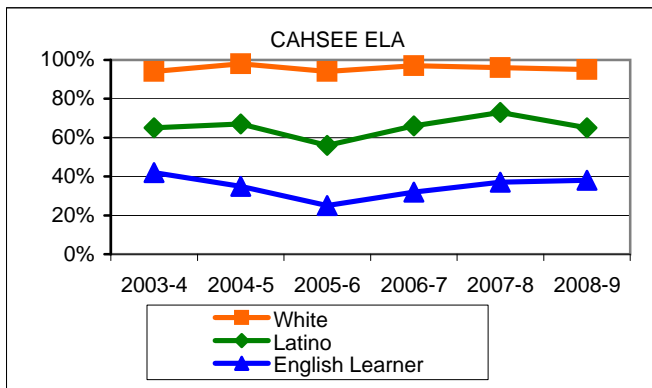
Attendance (Percent over year)	Lowest Month	Whole Year	District
2004-5		94.3%	94.9%
2005-6		94.2%	94.8%
2006-7	93.6%	94.5%	94.7%
2007-8	92.8%	94.3%	94.7%
2008-9			



Preparing Students to Pass the High School Exit Exam (CAHSEE)

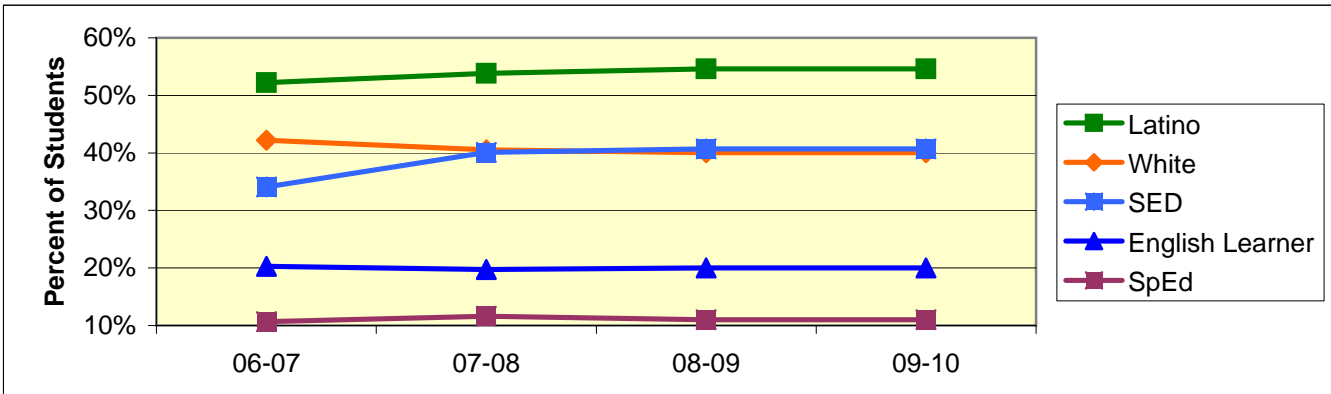
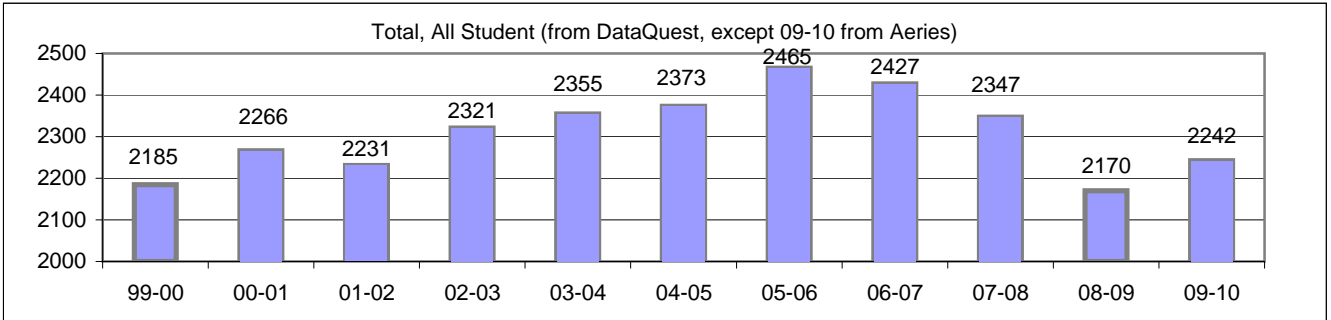
English Language Arts (ELA), March and May in that year, 10th grade only, California cut points (dataquest)	School wide	Latino	White	Socio-Econ Disadv	English Learner	Stud with Disab	State wide
2003-4	82.0%	65.0%	94.0%	63.0%	42.0%	41.0%	75.0%
2004-5	84.0%	67.0%	98.0%	56.0%	35.0%	52.0%	76.0%
2005-6	76.0%	56.0%	94.0%	45.0%	25.0%	23.0%	77.0%
2006-7	82.0%	66.0%	97.0%	60.0%	32.0%	44.0%	77.0%
2007-8	86.0%	73.0%	96.0%	70.0%	37.0%	56.0%	79.0%
2008-9	81.0%	65.0%	95.0%	61.0%	38.0%	57.0%	79.0%

Math, March and May in that year, 10th grade only, California cut points (dataquest)	School wide	Latino	White	Socio-Econ Disadv	English Learner	Stud with Disab	State wide
2003-4	81.0%	64.0%	93.0%	62.0%	51.0%	32.0%	74.0%
2004-5	85.0%	70.0%	95.0%	59.0%	42.0%	45.0%	74.0%
2005-6	77.0%	57.0%	94.0%	50.0%	31.0%	16.0%	76.0%
2006-7	82.0%	64.0%	97.0%	60.0%	39.0%	39.0%	76.0%
2007-8	83.0%	68.0%	95.0%	64.0%	40.0%	44.0%	78.0%
2008-9	82.0%	69.0%	94.0%	69.0%	48.0%	55.0%	80.0%



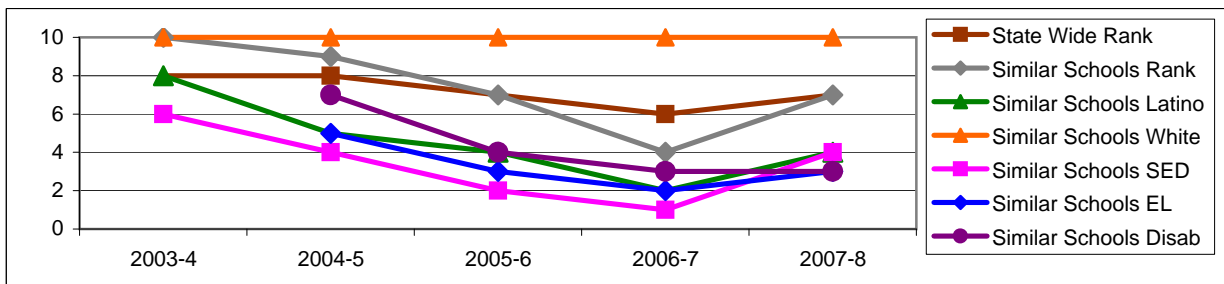
Board Focus Goals: Santa Barbara High School (4) - January 2010

Demographics (9-12, Jan 2010, Aeries)	Total	Female	Male	Latino	White	SED	English Learner	SpEd
Number	2242	1107	1135	1210	900	897	436	256
Percent of Total		49.8%	50.2%	54.6%	40.0%	40.7%	20.0%	11.0%



Achieve a State Similar School Ranking of 8 or Higher (scale = 1-10)

	State Wide Rank	Similar Schools Rank	Similar Schools Latino	Similar Schools White	Similar Schools SED	Similar Schools EL	Similar Schools Disab
2003-4	8	10	8	10	6	NA	NA
2004-5	8	9	5	10	4	5	7
2005-6	7	7	4	10	2	3	4
2006-7	6	4	2	10	1	2	3
2007-8	7	7	4	10	4	3	3

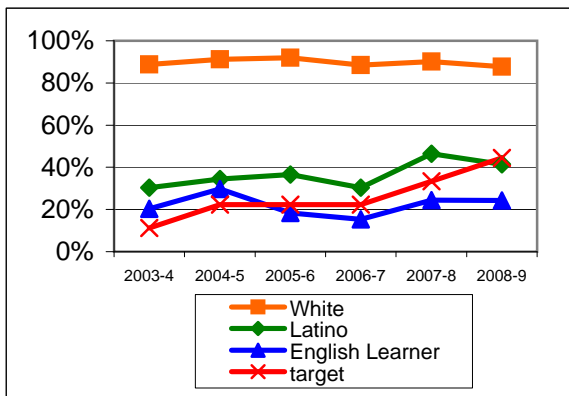


Exceed Federal Adequate Yearly Progress (AYP) Accountability Goals (Blue = Not enough students, **Bold/underline/italic** = Made by adjustment, **Red** = Did not pass

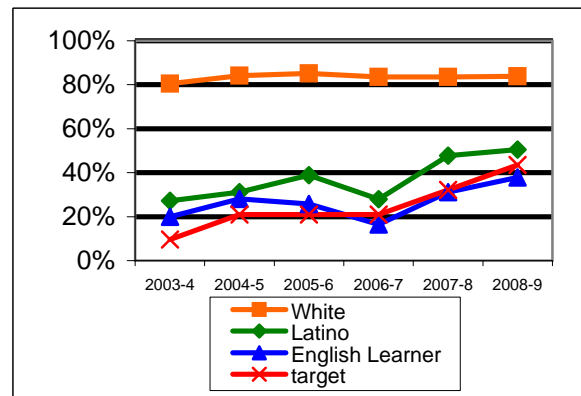
English Language Arts (ELA): Percent Proficient or Higher (Based on 10th grade Exit Exam (CAHSEE), Federal Cut Points)	State Targets	Schoolwide	Latino	White	Socio-Econ Disadv	English Learner	Stud with Disab	
2003-4	11.2%	60.2%	30.3%	88.8%	23.3%	20.3%	16.3%	
2004-5	22.3%	60.2%	34.4%	91.2%	30.4%	29.8%	14.5%	
2005-6	22.3%	63.0%	36.6%	92.0%	28.2%	<u>18.4%</u>	10.2%	
2006-7	22.3%	56.7%	30.3%	88.4%	27.1%	15.4%	10.9%	Mark 1
2007-8	33.4%	67.5%	46.5%	90.2%	43.0%	24.4%	7.0%	Mark 2
2008-9	44.5%	62.3%	41.5%	87.7%	40.4%	24.3%	8.0%	PI Y1
State Averages 2-12, 2008-09		52.4%	39.2%	70.3%	38.6%	33.5%	30.7%	
2009-10	55.6%							PI Y2

Math: Percent Proficient or Higher (Based on 10th grade Exit Exam (CAHSEE), Federal Cut Points)	State Targets	Schoolwide	Latino	White	Socio-Econ Disadv	English Learner	Stud with Disab	
2003-4	9.6%	54.5%	27.2%	80.5%	23.4%	20.0%	8.0%	
2004-5	20.9%	55.8%	31.1%	84.2%	28.4%	28.1%	10.5%	
2005-6	20.9%	60.9%	38.8%	85.2%	29.6%	25.8%	10.6%	
2006-7	20.9%	53.0%	28.0%	83.6%	26.5%	<u>16.4%</u>	12.3%	
2007-8	32.2%	64.6%	47.7%	83.5%	46.6%	31.1%	12.5%	Mark 1
2008-9	43.5%	65.7%	50.5%	83.8%	48.7%	37.8%	13.7%	PI Y1
State Averages 2-12, 2008-09		54.5%	44.0%	67.6%	43.9%	43.0%	32.3%	
2009-10	54.8%							PI Y2

ELA

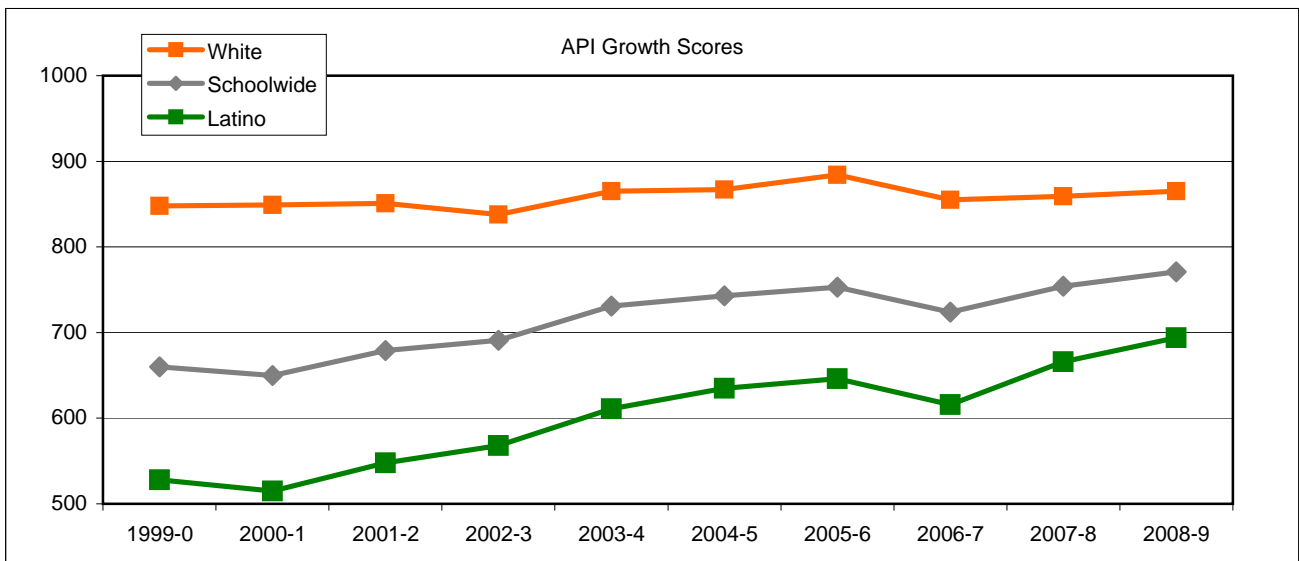


Math



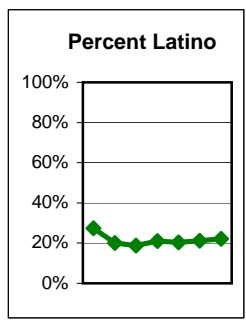
Santa Barbara High Continued
Exceed State Academic Performance Index (API) Growth Goals

	Schoolwide			Latino			White		
	Base	Growth/ Goal Met	State API (9-11)	Base	Growth/ Goal Met	State API (9-11)	Base	Growth/ Goal Met	State API (9-11)
2003-4	666	731 Met		543	611 Met		817	865 Met	
2004-5	739	743 Met		621	635 Met		869	867 Met	
2005-6	743	753 Met	680	635	646 Met	609	868	884 Met	755
2006-7	737	724 NotMet	689	630	616 NotMet	621	866	855 Met	765
2007-8	724	754 Met	702	616	666 Met	638	855	859 Met	776
2008-9	754	771 Met	713	666	694 Met	651	859	865 Met	788



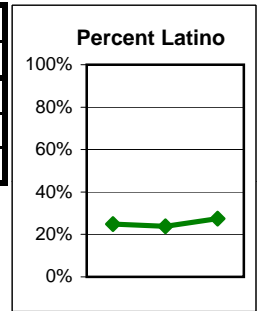
Increase Participation Across Demographic Spectrum in Advanced Courses (Percent of Students in Category)

GATE	Latino		White		All Others	
	Number	Percent	Number	Percent	Number	Percent
2003-4	78	27.4%	186	65.3%	21	7.4%
2004-5	98	20.1%	353	72.5%	36	7.4%
2005-6	112	18.8%	442	74.0%	43	7.2%
2006-7	124	21.0%	424	71.9%	42	7.1%
2007-8	114	20.4%	401	71.6%	45	8.0%
2008-9	106	21.2%	357	71.3%	38	7.6%
2009-10	108	22.1%	346	70.9%	34	7.0%

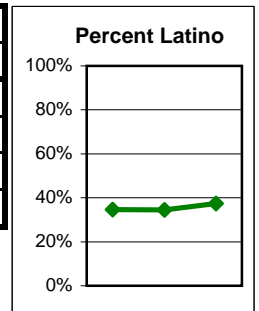


Santa Barbara High Continued

AP (Number taking at least 1 class)	Latino		White		All Others	
	Number	Percent	Number	Percent	Number	Percent
2006-7	146	24.9%	400	68.1%	41	7.0%
2007-8	136	23.9%	395	69.4%	38	6.7%
2008-9	145	27.5%	352	66.7%	31	5.9%

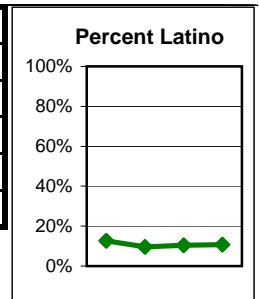


Honors (Number taking at least 1 class)	Latino		White		All Others	
	Number	Percent	Number	Percent	Number	Percent
2006-7	491	34.7%	846	59.7%	80	5.6%
2007-8	466	34.5%	794	58.7%	92	6.8%
2008-9	483	37.4%	730	56.5%	78	6.0%
2009-10						

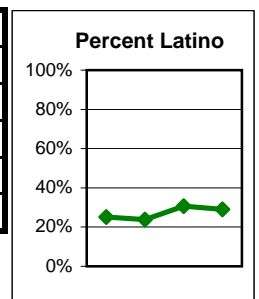


Santa Barbara High Continued

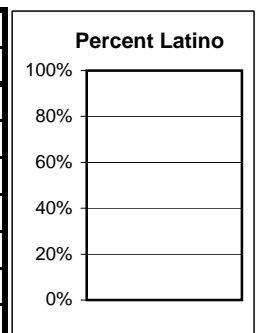
MAD Academy (Number taking at least 1 class)	Latino		White		All Others	
	Number	Percent	Number	Percent	Number	Percent
2006-7	20	12.7%	134	85.4%	3	1.9%
2007-8	14	9.6%	130	89.0%	2	1.4%
2008-9	13	10.5%	107	86.3%	4	3.2%
2009-10 (current)	17	10.8%	137	86.7%	4	2.5%



VADA Academy (Number taking at least 1 class)	Latino		White		All Others	
	Number	Percent	Number	Percent	Number	Percent
2006-7	62	25.2%	171	69.5%	13	5.3%
2007-8	57	23.8%	171	71.3%	12	5.0%
2008-9	78	30.6%	165	64.7%	12	4.7%
2009-10 (current)	80	29.0%	188	68.1%	8	2.9%

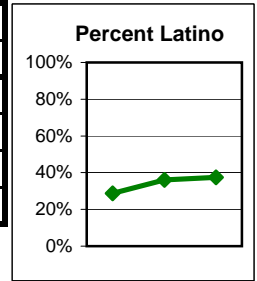


GREEN Academy (Number taking at least 1 class)	Latino		White		All Others	
	Number	Percent	Number	Percent	Number	Percent
2003-4						
2004-5						
2005-6						
2006-7						
2007-8						
2008-9						
2009-10						



Santa Barbara High Continued

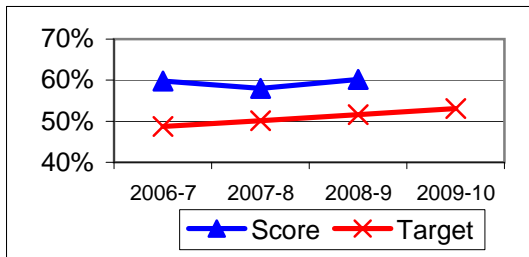
Dual Enrollment (Number taking at least 1 class)	Latino		White		All Others	
	Number	Percent	Number	Percent	Number	Percent
2006-7	186	28.7%	428	65.9%	35	5.4%
2007-8	293	36.0%	476	58.5%	45	5.5%
2008-9	277	37.4%	425	57.4%	39	5.3%
2009-10						



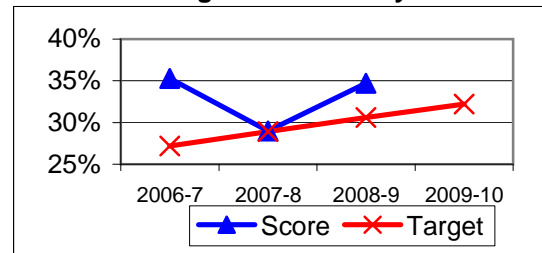
Progress on English Learners Gaining One Proficiency Level Annually and Attaining English Language Proficiency

	Gained One Level On CELDT		Attained English Proficiency		
	Target	Score	Target	Score	
2003-4	51.0%		30.0%		
2004-5	51.5%	82.8%	30.7%	56.8%	
2005-6	52.0%	76.8%	31.4%	43.3%	
2006-7	48.7%	59.8%	27.2%	35.3%	New Norms
2007-8	50.1%	58.0%	28.9%	29.0%	
2008-9	51.6%	60.2%	30.6%	34.7%	
2009-10	53.1%		32.2%		

Gained One Level On CELDT

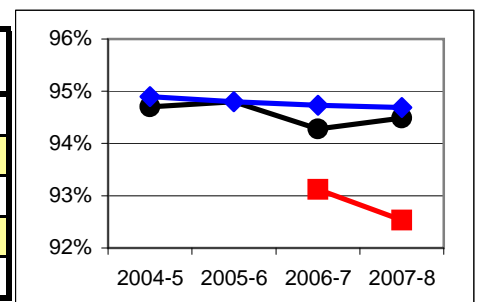


Attained English Proficiency



Increase Efforts to Enhance Revenue

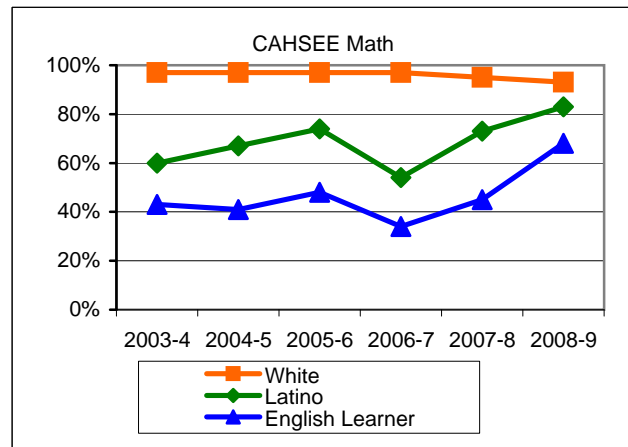
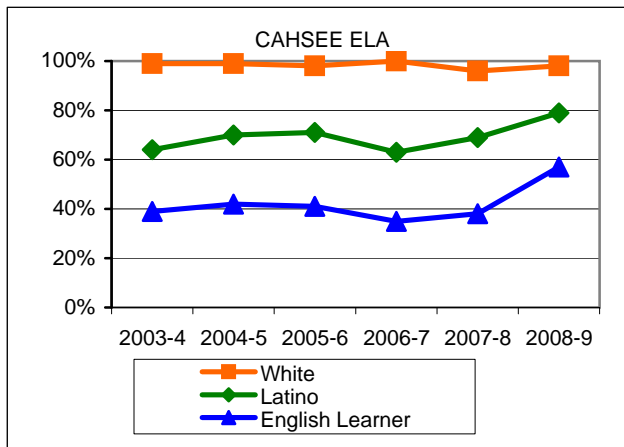
Attendance (Percent over year)	Lowest Month	Whole Year	District
2004-5		94.7%	94.9%
2005-6		94.8%	94.8%
2006-7	93.1%	94.3%	94.7%
2007-8	92.5%	94.5%	94.7%
2008-9			



Preparing Students to Pass the High School Exit Exam (CAHSEE)

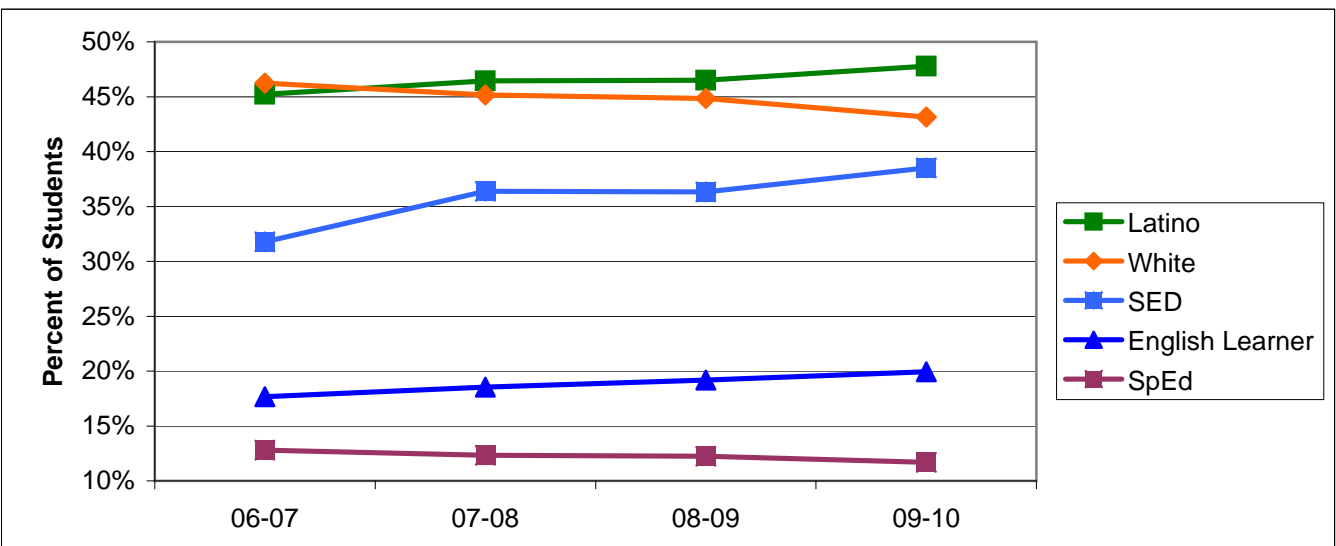
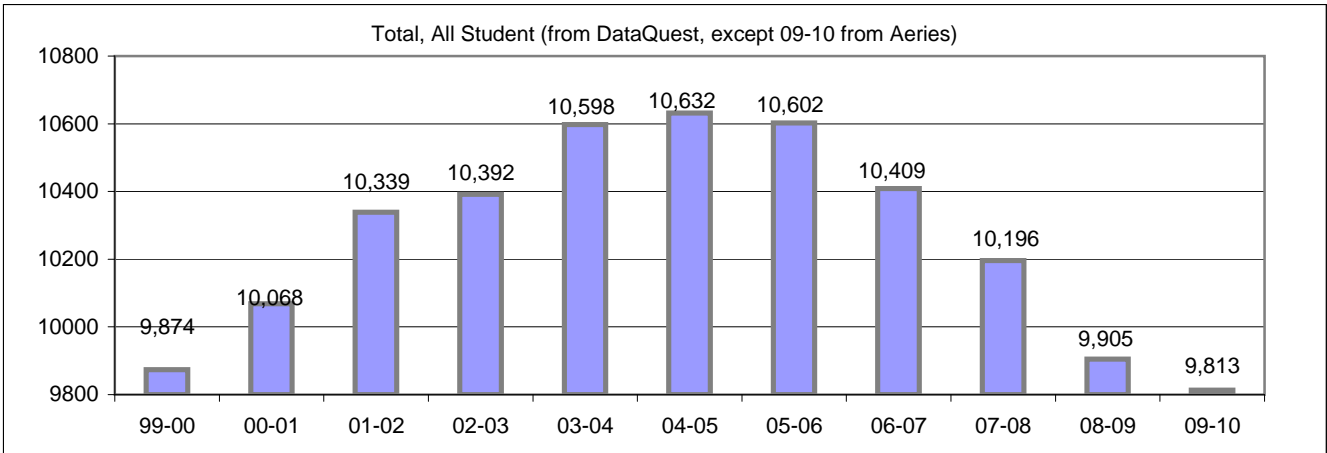
English Language Arts (ELA), March and May in that year, 10th grade only, California cut points (dataquest)	School wide	Latino	White	Socio-Econ Disadv	English Learner	Stud with Disab	State wide
2003-4	82.0%	64.0%	99.0%	57.0%	39.0%	48.0%	75.0%
2004-5	83.0%	70.0%	99.0%	64.0%	42.0%	40.0%	76.0%
2005-6	84.0%	71.0%	98.0%	66.0%	41.0%	37.0%	77.0%
2006-7	79.0%	63.0%	100.0%	63.0%	35.0%	36.0%	77.0%
2007-8	82.0%	69.0%	96.0%	68.0%	38.0%	38.0%	79.0%
2008-9	87.0%	79.0%	98.0%	78.0%	57.0%	48.0%	79.0%

Math, March and May in that year, 10th grade only, California cut points (dataquest)	School wide	Latino	White	Socio-Econ Disadv	English Learner	Stud with Disab	State wide
2003-4	79.0%	60.0%	97.0%	59.0%	43.0%	25.0%	74.0%
2004-5	80.0%	67.0%	97.0%	61.0%	41.0%	26.0%	74.0%
2005-6	85.0%	74.0%	97.0%	68.0%	48.0%	33.0%	76.0%
2006-7	73.0%	54.0%	97.0%	55.0%	34.0%	25.0%	76.0%
2007-8	83.0%	73.0%	95.0%	71.0%	45.0%	38.0%	78.0%
2008-9	87.0%	83.0%	93.0%	82.0%	68.0%	29.0%	80.0%



Board Focus Goals: Secondary District - January 2010

Demographics (9-12, Jan 2010, Aeries)	Total	Female	Male	Latino	White	SED	English Learner	SpEd
Number	9813	4796	5017	4689	4234	3779	1957	1146
Percent of Total		48.9%	51.1%	47.8%	43.1%	38.5%	19.9%	11.7%



Secondary District Continued

Exceed Federal Adequate Yearly Progress (AYP) Accountability Goals (Blue = Not enough students, Bold/underline/italic = Made by adjustment, Red = Did not pass

enough students, Bold/underline/italic = Made by adjustment, Red = Did not pass

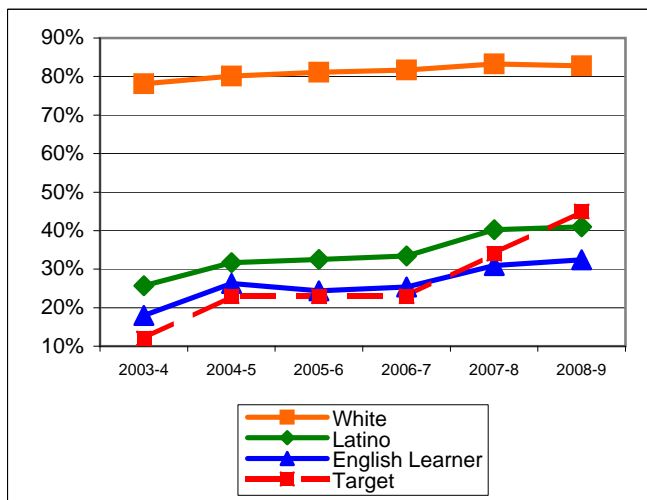
English Language Arts (ELA): Percent Proficient or Higher (Based on 7-8th grade CST and 10th grade Exit Exam (CAHSEE), Federal Cut Points)	State Targets	Schoolwide	Latino	White	Socio-Econ Disadv	English Learner	Stud with Disab	
2003-4	12.0%	52.8%	25.7%	78.1%	22.1%	18.0%	12.8%	
2004-5	23.0%	57.0%	31.7%	80.1%	28.0%	26.3%	17.2%	
2005-6	23.0%	57.7%	32.5%	81.1%	27.6%	24.4%	<u>12.8%</u>	
2006-7	23.0%	56.5%	33.4%	81.7%	30.7%	25.4%	14.5%	GS OK
2007-8	34.0%	61.5%	40.2%	83.3%	37.4%	30.9%	17.8%	GS OK
2008-9	45.0%	61.9%	41.0%	82.8%	39.6%	32.4%	<u>25.4%</u>	Mark 1
State Averages 2-12, 2008-09		52.4%	39.2%	70.3%	38.6%	33.5%	30.7%	
2009-10	56.0%							

(GS = Grade Span)

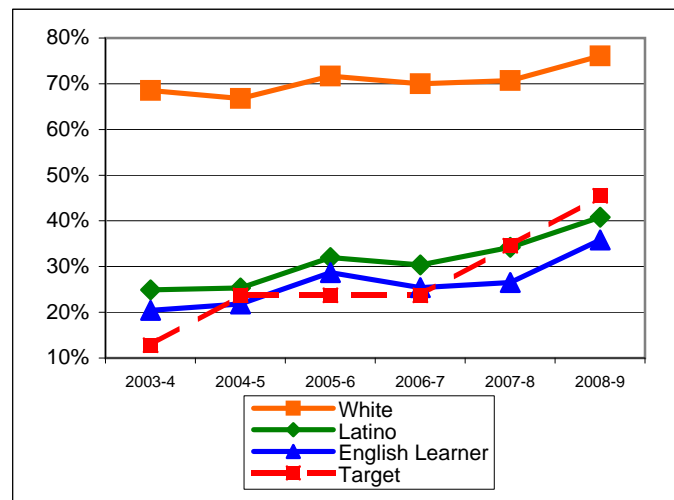
Math: Percent Proficient or Higher (Based on 7-8th grade CST and 10th grade Exit Exam (CAHSEE), Federal Cut Points)	State Targets	Schoolwide	Latino	White	Socio-Econ Disadv	English Learner	Stud with Disab	
2003-4	12.8%	47.8%	24.9%	68.5%	23.1%	20.4%	11.8%	
2004-5	23.7%	47.2%	25.3%	66.8%	22.5%	21.8%	15.5%	
2005-6	23.7%	53.1%	32.0%	71.7%	30.0%	28.7%	<u>13.8%</u>	
2006-7	23.7%	49.6%	30.4%	70.0%	29.2%	25.4%	<u>13.8%</u>	
2007-8	34.6%	52.9%	34.2%	70.7%	33.6%	26.5%	16.0%	GS OK
2008-9	45.5%	58.8%	40.8%	76.1%	39.5%	35.8%	22.7%	Mark 1
State Averages 2-12, 2008-09		54.5%	44.0%	67.6%	43.9%	43.0%	32.3%	
2009-10	56.4%							

(GS = Grade Span)

ELA



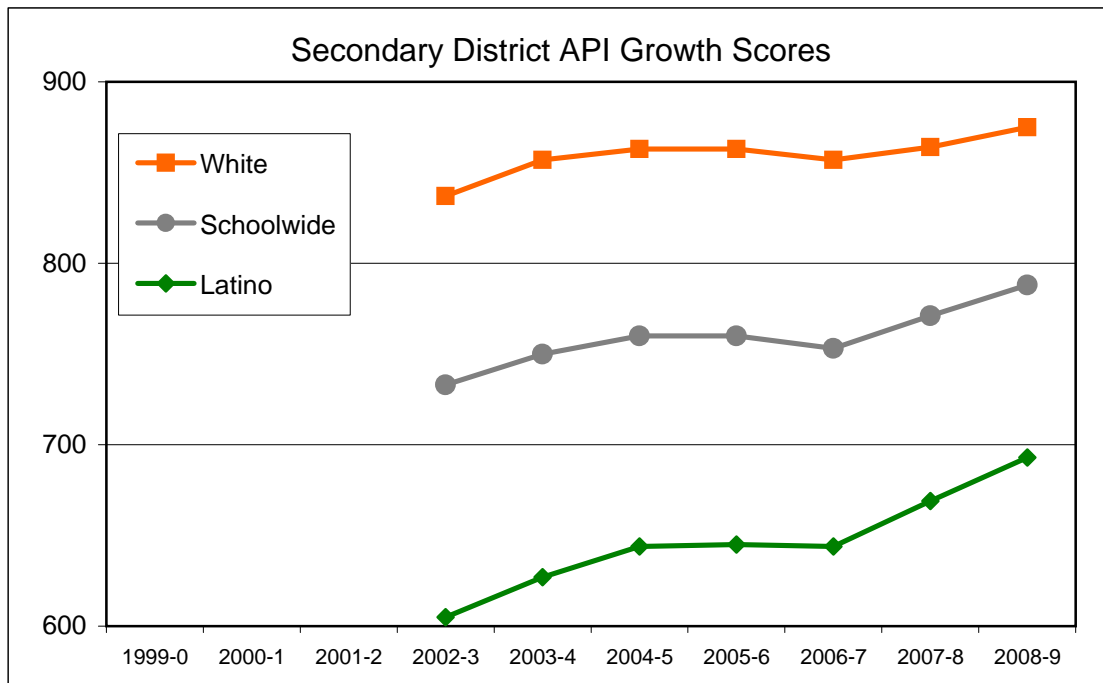
Math



Secondary District Continued

Exceed State Academic Performance Index (API) Growth Goals

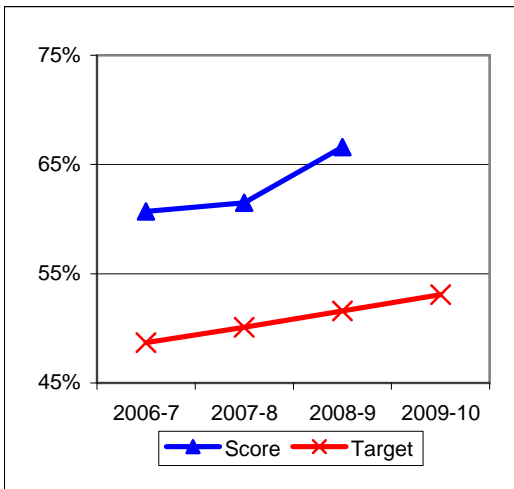
	Schoolwide			Latino			White		
	Base	Growth/ Goal Met	State API (2-11)	Base	Growth/ Goal Met	State API (2-11)	Base	Growth/ Goal Met	State API (2-11)
2003-4	716	750		585	627		824	857	
2004-5	756	760		636	644		859	863	
2005-6	760	760	720	644	645	654	863	863	801
2006-7	757	753	728	642	644	665	857	857	805
2007-8	753	771	742	644	669	683	857	864	816
2008-9	775	788	755	674	693	698	864	875	828



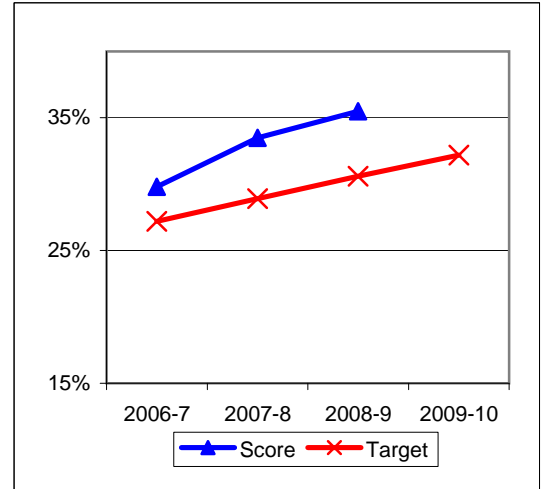
Progress on English Learners Gaining One Proficiency Level Annually and Attaining English Language Proficiency

	Gained One Level On CELDT		Attained English Proficiency		
	Target	Score	Target	Score	
2003-4	51.0%	78.6%	30.0%	56.9%	
2004-5	51.5%	80.2%	30.7%	53.0%	
2005-6	52.0%	78.4%	31.4%	53.0%	
2006-7	48.7%	60.7%	27.2%	29.8%	New Norms
2007-8	50.1%	61.5%	28.9%	33.5%	
2008-9	51.6%	66.6%	30.6%	35.5%	
2009-10	53.1%		32.2%		

Gained One Level On CELDT



Attained English Proficiency

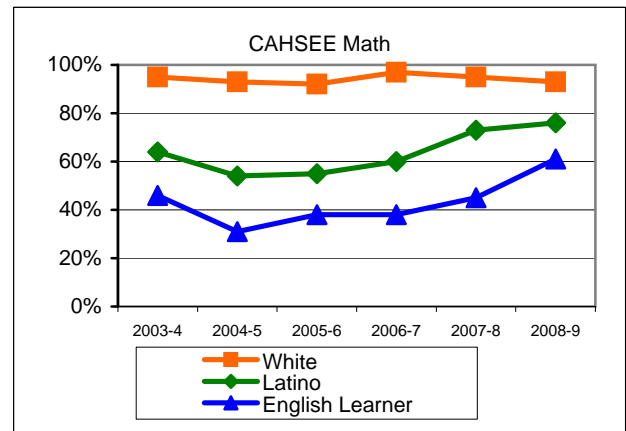
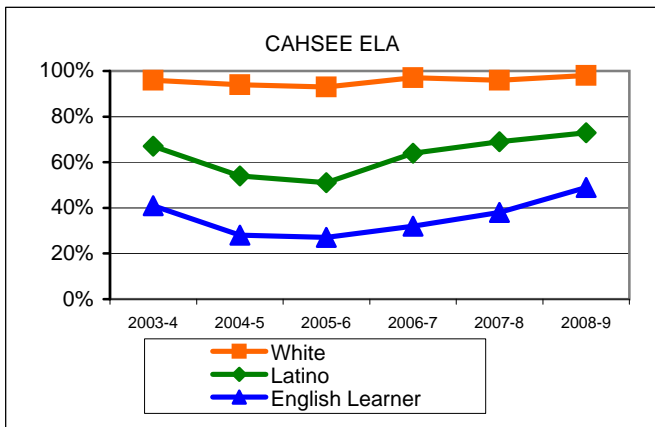


Secondary District Continued

Preparing Students to Pass the High School Exit Exam (CAHSEE)

English Language Arts (ELA), March and May in that year, 10th grade only, California cut points (dataquest)	School wide	Latino	White	Socio-Econ Disadv	English Learner	Stud with Disab	State wide
2003-4	83.0%	67.0%	96.0%	62.0%	41.0%	48.0%	75.0%
2004-5	74.0%	54.0%	94.0%	47.0%	28.0%	37.0%	76.0%
2005-6	69.0%	51.0%	93.0%	44.0%	27.0%	33.0%	77.0%
2006-7	82.0%	64.0%	97.0%	61.0%	32.0%	44.0%	77.0%
2007-8	84.0%	69.0%	96.0%	68.0%	38.0%	38.0%	79.0%
2008-9	86.0%	73.0%	98.0%	71.0%	49.0%	57.0%	79.0%

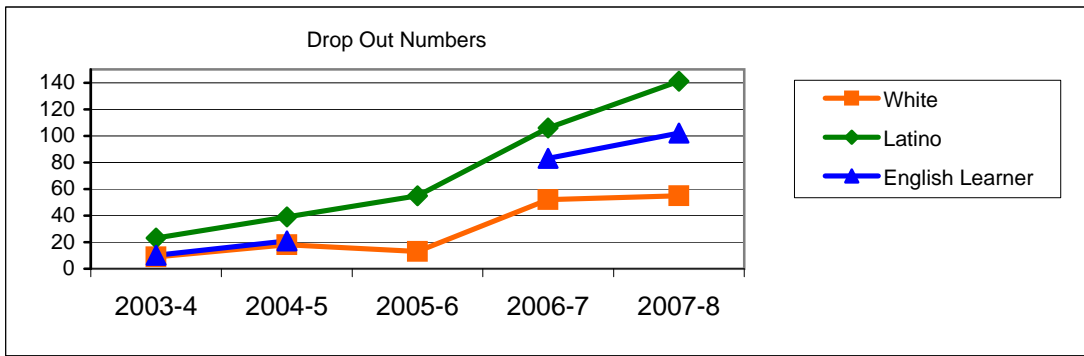
Math, March and May in that year, 10th grade only, California cut points (dataquest)	School wide	Latino	White	Socio-Econ Disadv	English Learner	Stud with Disab	State wide
2003-4	82.0%	64.0%	95.0%	63.0%	46.0%	37.0%	74.0%
2004-5	73.0%	54.0%	93.0%	47.0%	31.0%	32.0%	74.0%
2005-6	71.0%	55.0%	92.0%	50.0%	38.0%	30.0%	76.0%
2006-7	79.0%	60.0%	97.0%	59.0%	38.0%	35.0%	76.0%
2007-8	83.0%	73.0%	95.0%	71.0%	45.0%	38.0%	78.0%
2008-9	86.0%	76.0%	93.0%	76.0%	61.0%	48.0%	80.0%



Secondary District Continued

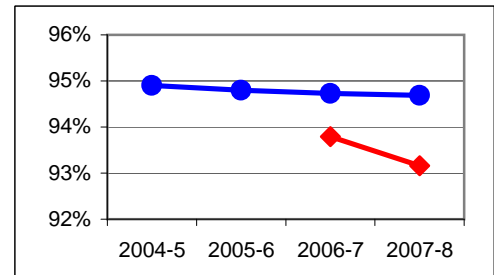
Drop out rates for High Schools (grades 9-12 from Dataquest; some data is not available)	District	Latino	White	Socio-Econ Disadv	English Learner	Stud with Disab
2003-4	33	23	9	3	10	5
2004-5	58	39	18	17	21	11
2005-6	75	55	13			
2006-7	170	106	52	37	83	0
2007-8	213	141	55	119	102	49

(New coding)



Increase Efforts to Enhance Revenue

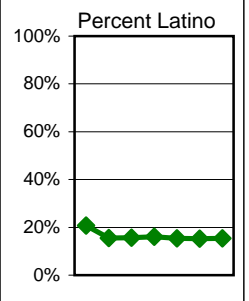
Attendance (Percent over year)	Lowest Month	District
2004-5		94.9%
2005-6		94.8%
2006-7	93.8%	94.7%
2007-8	93.2%	94.7%
2008-9		



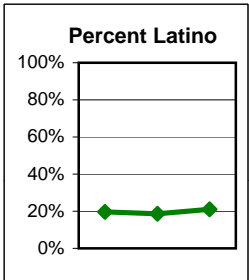
Secondary District Continued

Increase Participation Across Demographic Spectrum in Advanced Courses (Percent of Students in Category)

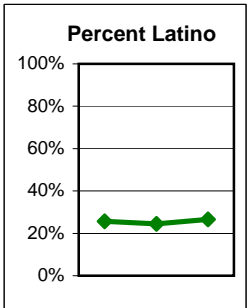
GATE (percent of all GATE students)	Latino		White		All Others	
	Number	Percent	Number	Percent	Number	Percent
2003-4	283	20.8%	935	68.7%	143	10.5%
2004-5	338	15.5%	1614	73.8%	234	10.7%
2005-6	406	15.7%	1889	73.1%	290	11.2%
2006-7	416	16.0%	1872	72.2%	304	11.7%
2007-8	381	15.4%	1803	72.6%	298	12.0%
2008-9	364	15.3%	1716	72.2%	297	12.5%
2009-10	371	15.4%	1740	72.3%	296	12.3%



AP (Number taking at least 1 class)	Latino		White		All Others	
	Number	Percent	Number	Percent	Number	Percent
2006-7	320	19.6%	1129	69.3%	181	11.1%
2007-8	299	18.6%	1119	69.7%	187	11.7%
2008-9	340	21.1%	1084	67.3%	187	11.6%

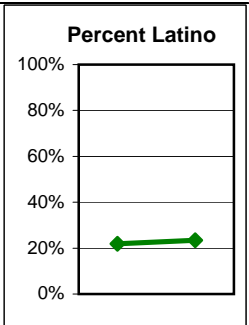


Honors (Number taking at least 1 class)	Latino		White		All Others	
	Number	Percent	Number	Percent	Number	Percent
2006-7	894	25.7%	2249	64.6%	336	9.7%
2007-8	805	24.4%	2147	65.1%	344	10.4%
2008-9	857	26.6%	2038	63.3%	325	10.1%
2009-10						



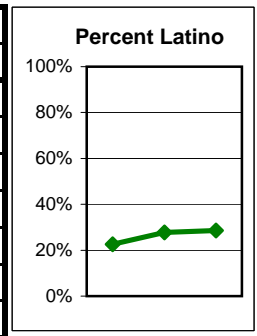
Secondary School District Continued

Academies (IB, Health, MAD, VADA; more to be added as data is usable)	Latino		White		All Others	
	Number	Percent	Number	Percent	Number	Percent
2003-4						
2004-5						
2005-6						
2006-7						
2007-8	138	21.9%	452	71.9%	39	6.2%
2008-9	151	23.5%	439	68.3%	53	8.2%
2009-10						



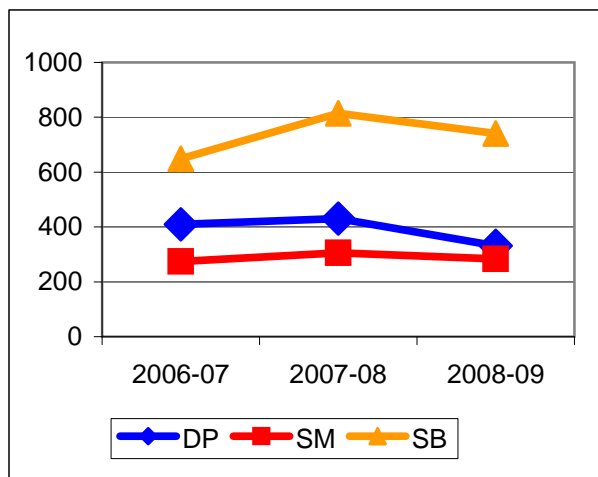
Secondary District Continued

Dual Enrollment (Number taking at least 1 class)	Latino		White		All Others	
	Number	Percent	Number	Percent	Number	Percent
2003-4						
2004-5						
2005-6						
2006-7	301	22.5%	909	68.0%	126	9.4%
2007-8	431	27.7%	973	62.6%	150	9.7%
2008-9	392	28.6%	839	61.2%	140	10.2%
2009-10						



Santa Barbara City College Dual Enrollment By School (Number taking at least one course)

Year	DP	SM	SB
2006-07	409	274	649
2007-08	430	306	814
2008-09	331	284	741
2009-10			



Prepared by Dr. Davis Hayden, Director of Research, Evaluation, and Technology