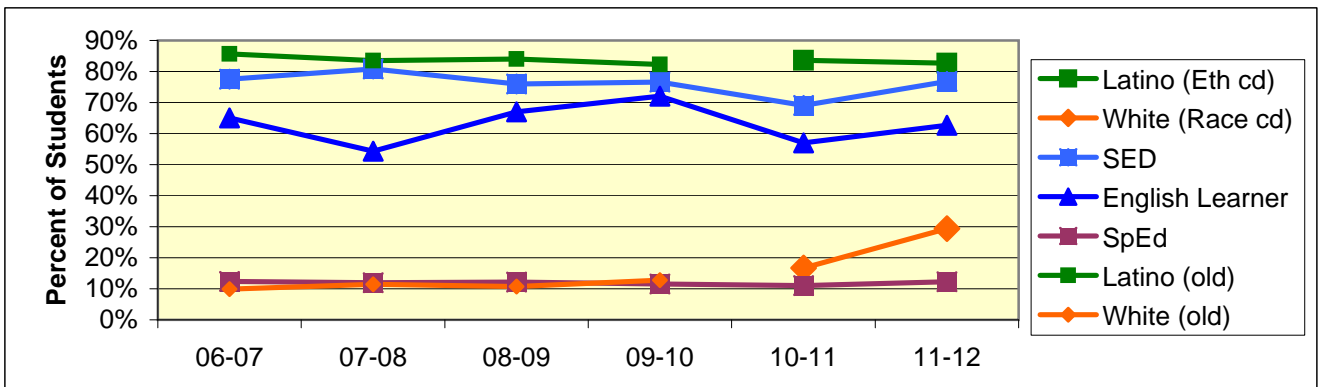
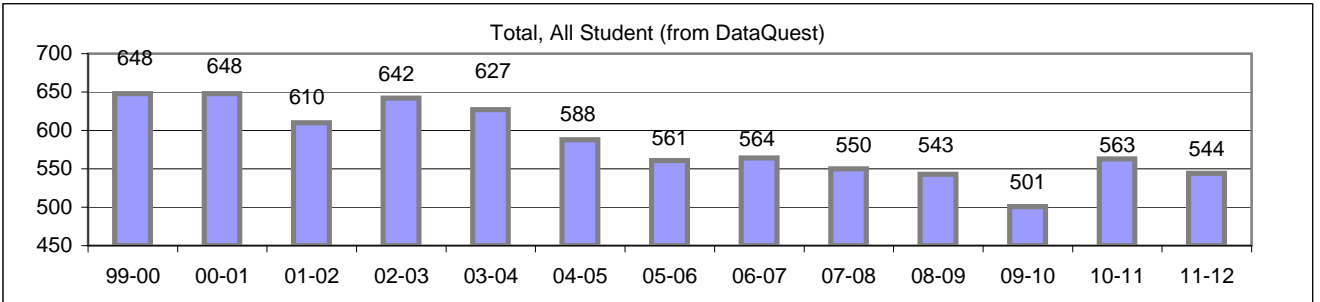


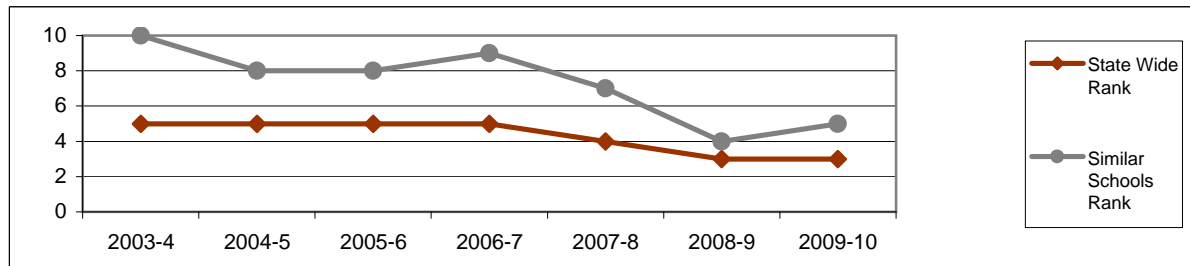
## Board Focus Goals: Adams Elementary (20) - Sept. 2011

Demographics (K-6, Sept 7, 2011, Aeries)	Total	Female	Male	Latino (Eth cd)	White (Race cd)	SED	English Learner	SpEd
Number	544	281	263	450	160	418	341	67
Percent of Total		51.7%	48.3%	82.7%	29.4%	76.8%	62.7%	12.3%



### Achieve a State Similar School Ranking of 8 or Higher (scale = 1-10)

	State Wide Rank	Similar Schools Rank	Similar Schools Latino	Similar Schools White	Similar Schools SED	Similar Schools EL	Similar Schools Disab
2003-4	5	10	9	na	9	na	na
2004-5	5	8	6	na	6	6	na
2005-6	5	8	7	na	7	7	na
2006-7	5	9	10	na	9	9	na
2007-8	4	7	6	na	5	7	na
2008-9	3	4					
2009-10	3	5					

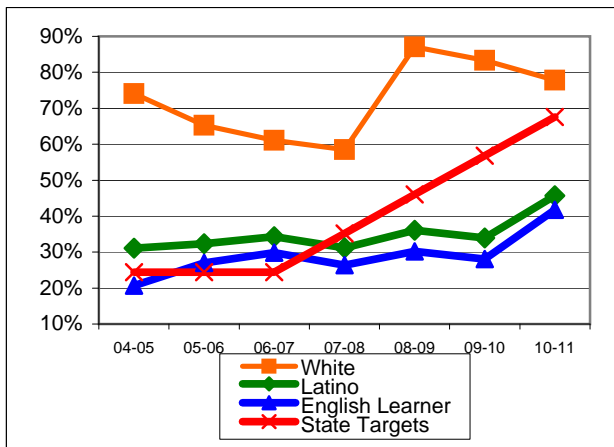


**Exceed Federal Adequate Yearly Progress (AYP) Accountability Goals** (Blue = Not enough students, Bold/underline/italic = Made by adjustment, Red = Did not pass

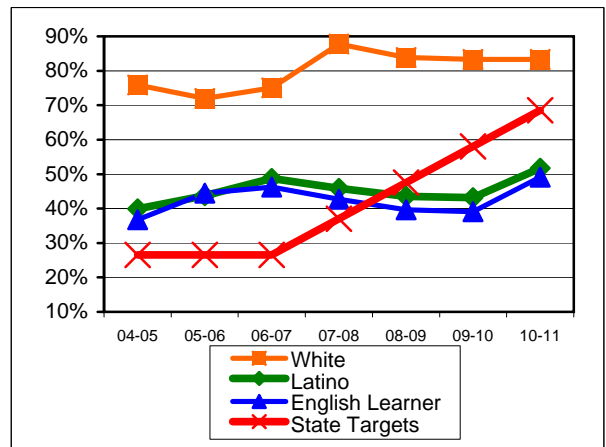
English Language Arts (ELA): Percent Proficient or Higher	State Targets	Schoolwide	Latino	White	Socio-Econ Disadv	English Learner	Stud with Disab	
04-05	24.4%	39.1%	31.1%	74.1%	28.6%	20.7%	5.9%	
05-06	24.4%	37.8%	32.3%	65.3%	29.9%	27.0%	8.3%	
06-07	24.4%	37.4%	34.3%	61.1%	32.2%	29.8%	12.2%	
07-08	35.2%	<u>34.7%</u>	<u>31.2%</u>	58.5%	29.5%	26.4%	11.8%	Mark 1
08-09	46.0%	<u>41.6%</u>	<u>36.1%</u>	87.1%	<u>34.2%</u>	30.2%	<u>29.6%</u>	Mark 2
09-10	56.8%	41.2%	33.9%	83.3%	32.0%	28.1%	<u>33.3%</u>	PI Y1
10-11	67.6%	<u>50.1%</u>	<u>45.7%</u>	77.8%	<u>43.0%</u>	<u>41.8%</u>	40.4%	PI Y2
State Average 2-11; 2010-11	67.0%	56.2%	44.7%	72.3%	44.0%	38.7%	34.3%	
11-12	78.4%							FR Y2

Math: Percent Proficient or Higher	State Targets	Schoolwide	Latino	White	Socio-Econ Disadv	English Learner	Stud with Disab	
04-05	26.5%	46.5%	39.9%	75.9%	38.5%	36.8%	4.5%	
05-06	26.5%	47.5%	43.7%	72.0%	41.5%	44.5%	13.1%	
06-07	26.5%	51.7%	48.7%	75.0%	47.7%	46.2%	18.4%	
07-08	37.0%	50.5%	45.9%	87.8%	45.2%	42.7%	21.6%	
08-09	47.5%	<u>47.3%</u>	43.5%	83.9%	42.0%	39.6%	<u>37.0%</u>	Mark 1
09-10	58.0%	49.4%	43.2%	83.3%	41.9%	39.1%	35.0%	PI Y1
10-11	68.5%	<u>55.0%</u>	<u>51.7%</u>	83.3%	<u>50.8%</u>	<u>49.1%</u>	40.7%	PI Y2
State Average 2-11; 2010-11	67.3%	58.4%	49.5%	70.1%	49.0%	48.7%	36.1%	
11-12	79.0%							FR Y2

ELA



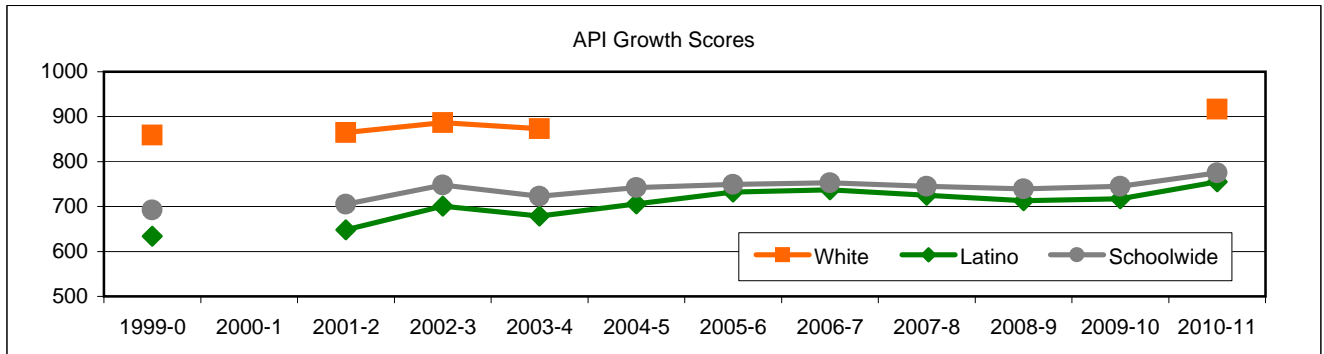
MATH



Adams Continued

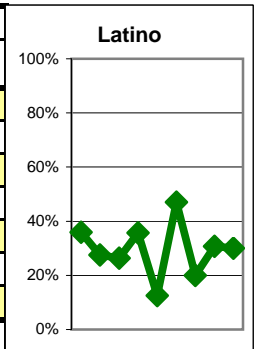
### Exceed State Academic Performance Index (API) Growth Goals

	Schoolwide			Latino			White		
	Base	Growth/ Goal Met	STATE API (2-6)	Base	Growth/ Goal Met	STATE API (2-6)	Base	Growth/ Goal Met	STATE API (2-6)
2003-4	725	723 Not Met		675	679 Met		872	873 Met	
2004-5	726	742 Met		682	706 Met				
2005-6	742	749 Met	751	706	732 Met	687			838
2006-7	749	753 NotMet	761	732	737 Met	702			840
2007-8	766	745 NotMet	776	751	725 NotMet	722			850
2008-9	742	739 NotMet	790	724	713 NotMet	738			862
2009-10	738	745 Met	800	713	717 NotMet	752			868
2010-11	745	775 Met	808	717	755 Met	763	918	917 Met	873



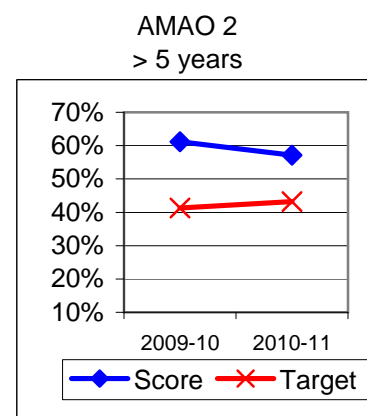
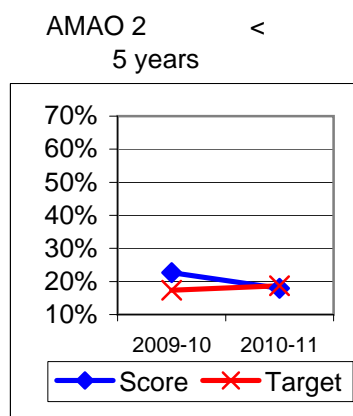
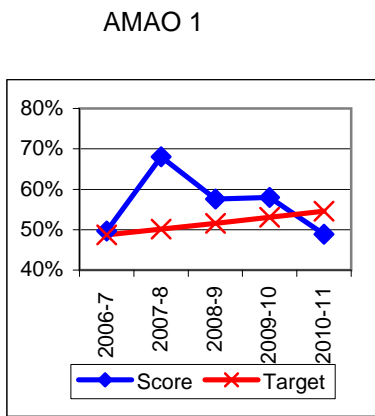
### Increase Participation Across Demographic Spectrum in Advanced Courses

GATE (percent of all GATE students, Aeries 12-2010)	Latino		White		All Others	
	Number	Percent	Number	Percent	Number	Percent
2003-4	14	35.9%	20	51.3%	5	12.8%
2004-5	8	27.6%	14	48.3%	7	24.1%
2005-6	5	26.3%	12	63.2%	2	10.5%
2006-7	5	35.7%	8	57.1%	1	7.1%
2007-8	1	12.5%	7	87.5%	0	0.0%
2008-9	8	47.1%	8	47.1%	1	5.9%
2009-10	3	20.0%	10	66.7%	2	13.3%
<b>Note: In 2010 ethnicity/race definitions changed</b>					Non-Latino	
2010-11	4	30.8%			9	69.2%
2011-12	3	30.0%			7	70.0%



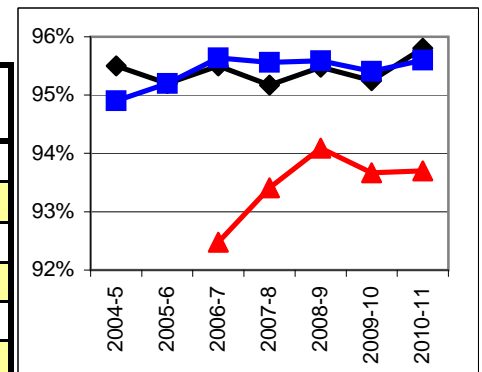
## Progress on English Learners Gaining One Proficiency Level Annually and Attaining English Language Proficiency

Taken from DataQuest	AMAO 1 Gained one Level on CELDT		AMAO 2 Gained English Proficiency			
	Target	Score	Target	Score	Target	Score
2003-4	51.0%		30.0%			
2004-5	51.5%	62.5%	30.7%	38.6%		
2005-6	52.0%	68.3%	31.4%	46.5%		
2006-7	48.7%	49.7%	27.2%	29.1%	New Norms	
2007-8	50.1%	68.0%	28.9%	47.0%		
2008-9	51.6%	57.6%	30.6%	44.7%		
			Less than 5 years cohort		Greater than 5 years cohort	
2009-10	53.1%	58.0%	17.4%	22.7%	41.3%	61.2%
2010-11	54.6%	48.9%	18.7%	17.9%	43.2%	57.1%



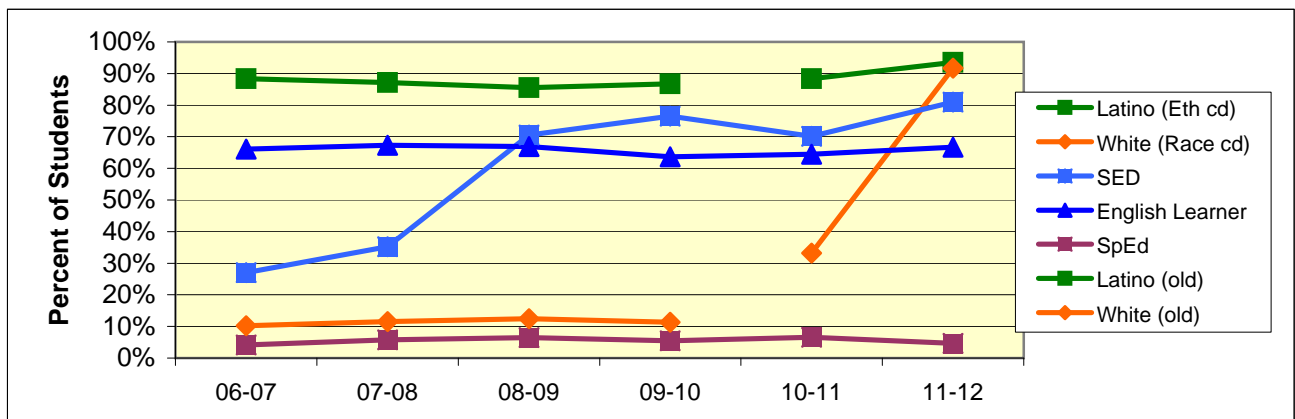
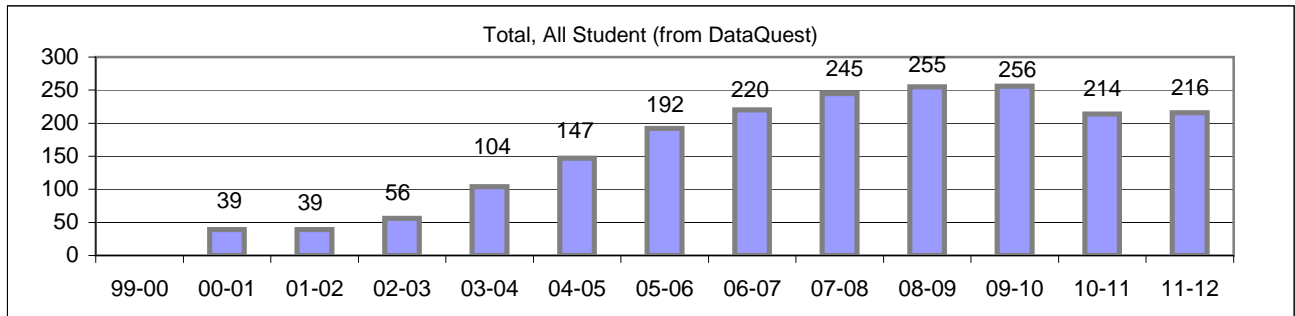
## Increase Efforts to Enhance Revenue

Attendance (Percent over year) (Attendance Office)	Lowest Month	Whole Year	District
2004-5		95.5%	94.9%
2005-6		95.2%	95.2%
2006-7	92.5%	95.5%	95.6%
2007-8	93.4%	95.2%	95.6%
2008-9	94.1%	95.5%	95.6%
2009-10	93.7%	95.3%	95.4%
2010-11	93.7%	95.8%	95.6%



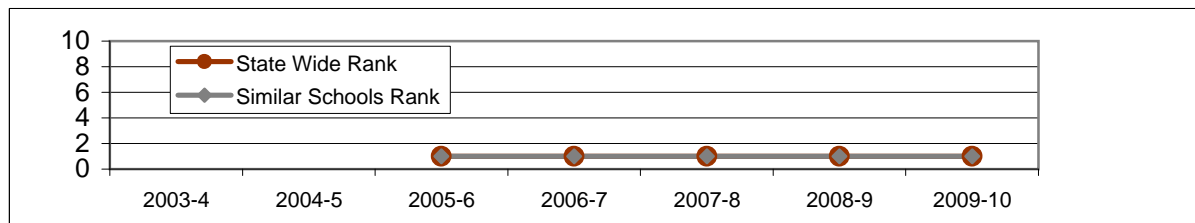
## Board Focus Goals: Adelante Charter (32) - Sept. 2011

Demographics (K-6, Sept 7, 2011, Aeries)	Total	Female	Male	Latino (Eth cd)	White (Race cd)	SED	English Learner	SpEd
Number	216	119	97	202	198	175	144	10
Percent of Total		55.1%	44.9%	93.5%	91.7%	81.0%	66.7%	4.6%



### Achieve a State Similar School Ranking of 8 or Higher (scale = 1-10)

	State Wide Rank	Similar Schools Rank	Similar Schools Latino	Similar Schools White	Similar Schools SED	Similar Schools EL	Similar Schools Disab
<b>2003-4</b>			na	na	na	na	na
<b>2004-5</b>			na	na	na	na	na
<b>2005-6</b>	1	1	na	na	na	na	na
<b>2006-7</b>	1	1	1	na	na	1	na
<b>2007-8</b>	1	1	na	na	na	na	na
<b>2008-9</b>	1	1					
<b>2009-10</b>	1	1					



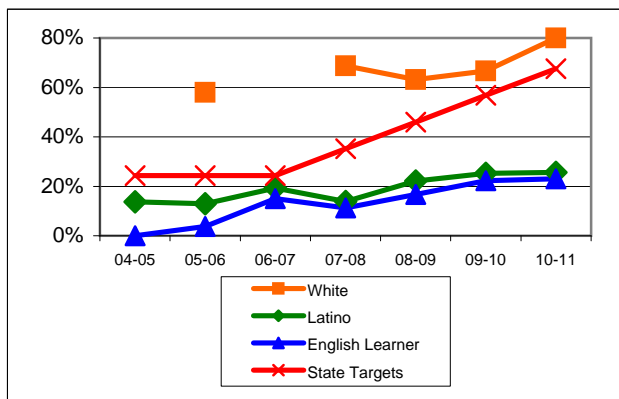
Adelante Continued

**Exceed Federal Adequate Yearly Progress (AYP) Accountability Goals** (Blue = Not enough students, Bold/underline/italic = Made by adjustment, Red = Did not pass

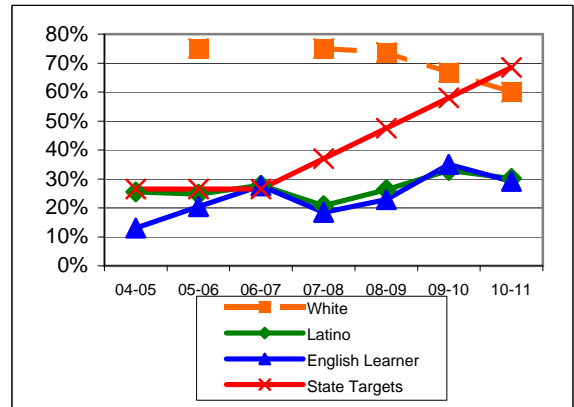
English Language Arts (ELA): Percent Proficient or Higher	State Targets	Schoolwide	Latino	White	Socio-Econ Disadv	English Learner	Stud with Disab	
04-05	24.4%	<u>17.2%</u>	13.7%		6.7%	0.0%		
05-06	24.4%	17.9%	12.9%	58.0%	0.0%	3.7%		Mark 1
06-07	24.4%	24.6%	<u>19.3%</u>		15.8%	<u>15.0%</u>		
07-08	35.2%	20.0%	13.8%	68.8%	5.3%	11.2%	9.1%	Mark 1
08-09	46.0%	<u>28.3%</u>	<u>22.1%</u>	63.2%	<u>20.2%</u>	16.7%	42.9%	Mark 2
09-10	56.8%	28.6%	25.2%	66.7%	19.5%	<u>22.3%</u>	42.9%	PI Y1
10-11	67.6%	30.5%	25.6%	80.0%	21.4%	23.0%	25.0%	PI Y2
State Average 2-11; 2010-11	67.0%	56.2%	44.7%	72.3%	44.0%	38.7%	34.3%	
11-12	78.4%							PI Y3

Math: Percent Proficient or Higher	State Targets	Schoolwide	Latino	White	Socio-Econ Disadv	English Learner	Stud with Disab	
04-05	26.5%	<u>31.0%</u>	25.5%		22.2%	13.0%		
05-06	26.5%	31.1%	<u>24.7%</u>	75.0%	10.0%	20.4%		Mark 1
06-07	26.5%	33.3%	27.8%		19.4%	27.6%		
07-08	37.0%	27.3%	20.8%	75.0%	12.3%	18.4%	36.4%	Mark 1
08-09	47.5%	<u>32.5%</u>	<u>26.3%</u>	73.7%	<u>21.7%</u>	22.9%	26.7%	Mark 2
09-10	58.0%	<u>36.7%</u>	<u>32.9%</u>	66.7%	<u>29.5%</u>	<u>35.0%</u>	50.0%	PI Y1
10-11	68.5%	31.9%	30.2%	60.0%	29.5%	29.2%	25.0%	PI Y2
State Average 2-11; 2010-11	67.3%	58.4%	49.5%	70.1%	49.0%	48.7%	36.1%	
11-12	79.0%							PI Y3

ELA



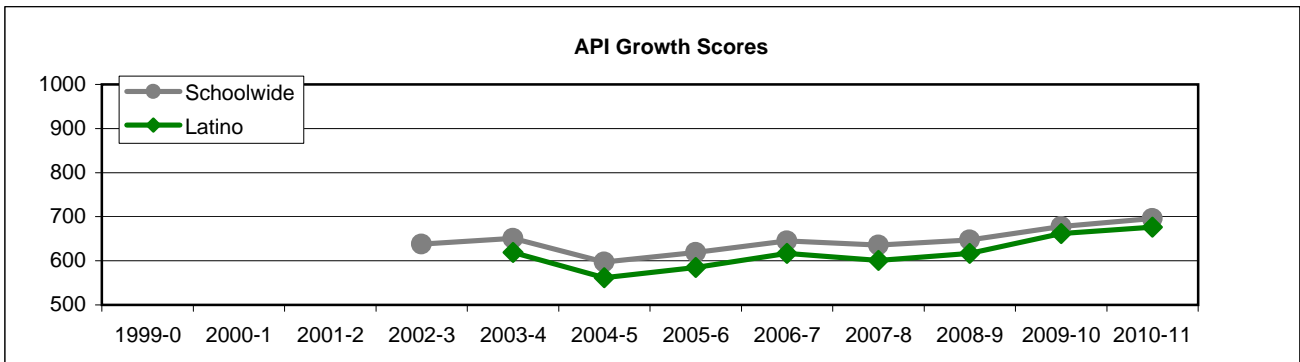
MATH



Adelante Continued

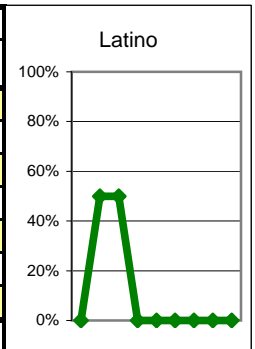
### Exceed State Academic Performance Index (API) Growth Goals

	Schoolwide			Latino			White		
	Base	Growth/ Goal Met	STATE API (2-6)	Base	Growth/ Goal Met	STATE API (2-6)	Base	Growth/ Goal Met	STATE API (2-6)
2003-4	640	651 met			619				
2004-5	651	597 Not Met			562				
2005-6	597	619 Met	751	562	585 Met	687			838
2006-7	620	645 Met	761	587	617 Met	702			840
2007-8	655	636 NotMet	776	627	601 NotMet	722			850
2008-9	641	647 NotMet	790	608	617 NotMet	738			862
2009-10	648	678 Met	800	616	662 Met	752			868
2010-11	678	696	808	662	676 Met	763	852		873



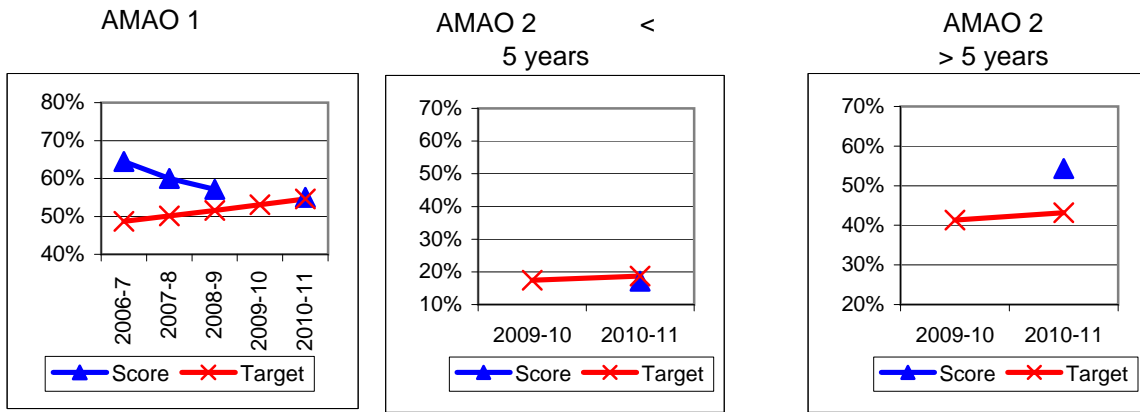
### Increase Participation Across Demographic Spectrum in Advanced Courses

GATE (percent of all GATE students, Aeries 12-2010)	Latino		White		All Others	
	Number	Percent	Number	Percent	Number	Percent
2003-4	0	0.0%	1	100.0%	0	0.0%
2004-5	1	50.0%	1	50.0%	0	0.0%
2005-6	1	50.0%	1	50.0%	0	0.0%
2006-7	0	0.0%	0	0.0%	0	0.0%
2007-8	0	0.0%	1	100.0%	0	0.0%
2008-9	0	0.0%	1	100.0%	0	0.0%
2009-10	0	0.0%	0	0.0%	0	0.0%
<b>Note: In 2010 ethnicity/race definitions changed</b>					Non-Latino	
2010-11	0	0.0%			0	0.0%
2011-12	0	0.0%			0	0.0%



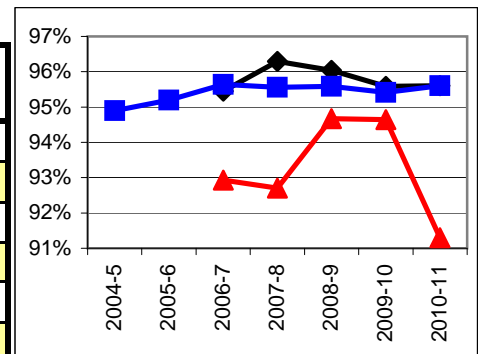
## Progress on English Learners Gaining One Proficiency Level Annually and Attaining English Language Proficiency

Taken from DataQuest	AMAO 1 Gained one Level on CELDT		AMAO 2 Gained English Proficiency			
	Target	Score	Target	Score	Target	Score
2003-4	51.0%		30.0%			
2004-5	51.5%	57.4%	30.7%			
2005-6	52.0%		31.4%			
2006-7	48.7%	64.5%	27.2%	52.3%	New Norms	
2007-8	50.1%	60.0%	28.9%	40.0%		
2008-9	51.6%	57.1%	30.6%	33.3%		
			Less than 5 years cohort		Greater than 5 years cohort	
2009-10	53.1%		17.4%		41.3%	
2010-11	54.6%	55.0%	18.7%	17.1%	43.2%	54.3%



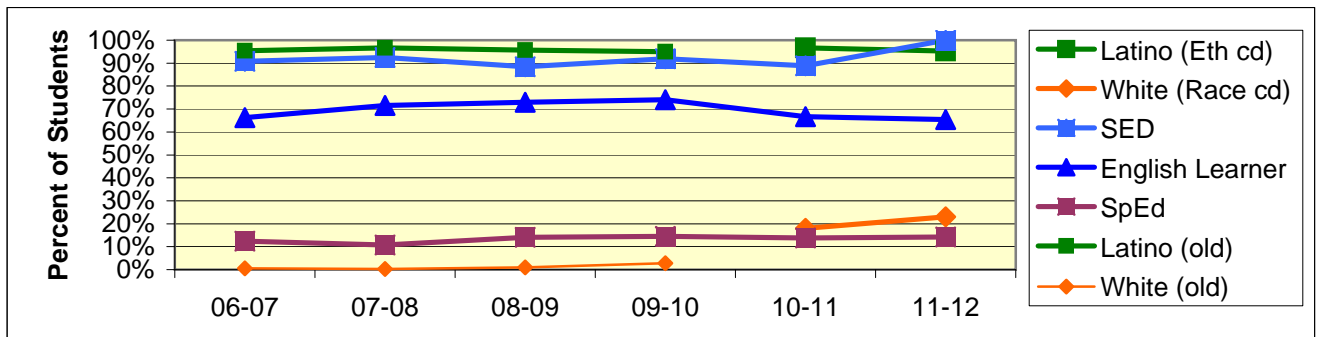
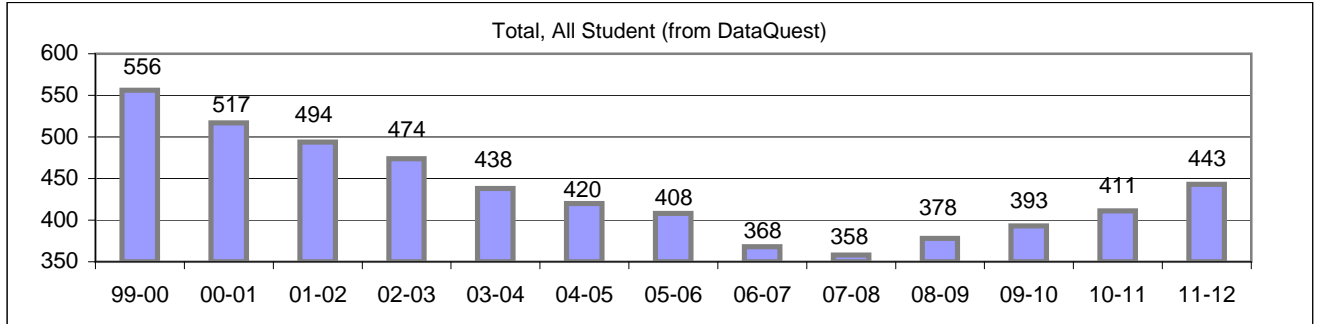
## Increase Efforts to Enhance Revenue

Attendance (Percent over year) (Attendance Office)	Lowest Month	Whole Year	District
2004-5			94.9%
2005-6			95.2%
2006-7	92.9%	95.5%	95.6%
2007-8	92.7%	96.3%	95.6%
2008-9	94.7%	96.0%	95.6%
2009-10	94.6%	95.6%	95.4%
2010-11	91.3%	95.6%	95.6%



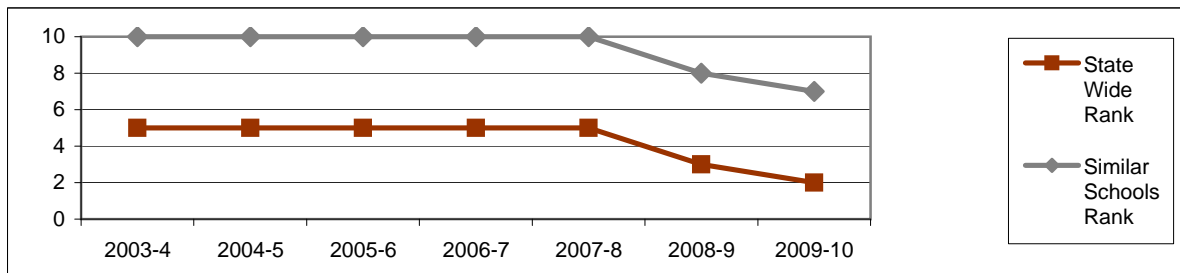
## Board Focus Goals: Cleveland Elementary (21) - Sept. 2011

Demographics (K-6, Sept 7, 2011, Aeries)	Total	Female	Male	Latino (Eth cd)	White (Race cd)	SED	English Learner	SpEd
Number	443	213	230	422	102	443	290	63
Percent of Total		48.1%	51.9%	95.3%	23.0%	100.0%	65.5%	14.2%



### Achieve a State Similar School Ranking of 8 or Higher (scale = 1-10)

	State Wide Rank	Similar Schools Rank	Similar Schools Latino	Similar Schools White	Similar Schools SED	Similar Schools EL	Similar Schools Disab
2003-4	5	10	10	na	10	na	na
2004-5	5	10	10	na	10	8	na
2005-6	5	10	10	na	10	9	na
2006-7	5	10	10	na	10	9	na
2007-8	5	10	10	na	10	9	na
2008-9	3	8					
2009-10	2	7					

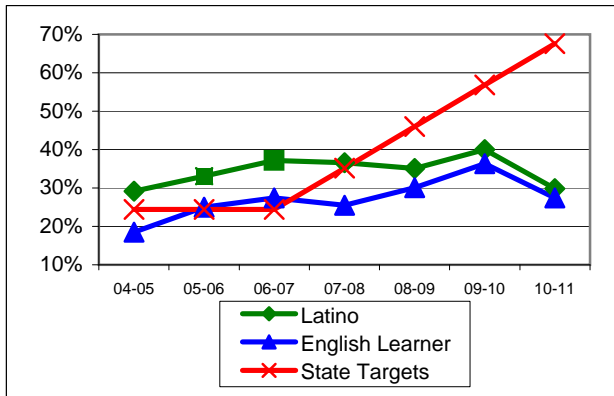


**Exceed Federal Adequate Yearly Progress (AYP) Accountability Goals** (Blue = Not enough students, Bold/underline/italic = Made by adjustment, Red = Did not pass

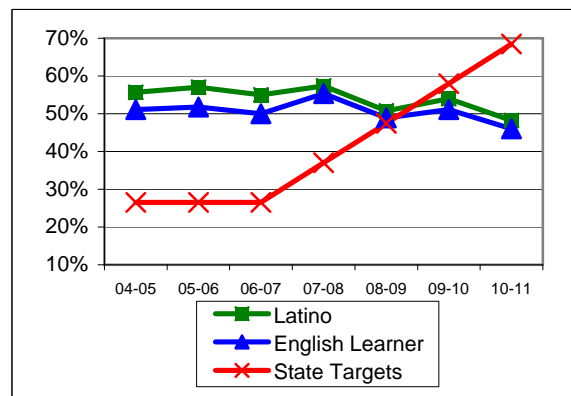
English Language Arts (ELA): Percent Proficient or Higher	State Targets	Schoolwide	Latino	White	Socio-Econ Disadv	English Learner	Stud with Disab	
04-05	24.4%	29.4%	29.2%		27.0%	18.5%	4.4%	
05-06	24.4%	33.2%	33.1%		32.6%	25.0%	12.8%	
06-07	24.4%	37.4%	37.2%		35.2%	27.4%	18.8%	
07-08	35.2%	36.2%	36.6%		35.8%	25.5%	31.6%	Mark 1
08-09	46.0%	35.2%	35.1%		34.3%	30.1%	40.0%	Mark 2
09-10	56.8%	40.6%	40.0%		39.6%	36.3%	36.8%	PI Y1
10-11	67.6%	30.5%	29.8%		29.5%	27.4%	22.7%	FR Y1
State Average 2-11; 2010-11	67.0%	56.2%	44.7%	72.3%	44.0%	38.7%	34.3%	
11-12	78.4%							PI Y2

Math: Percent Proficient or Higher	State Targets	Schoolwide	Latino	White	Socio-Econ Disadv	English Learner	Stud with Disab	
04-05	26.5%	55.6%	55.7%		54.8%	51.1%	9.1%	
05-06	26.5%	56.8%	57.0%		56.8%	51.8%	23.1%	
06-07	26.5%	54.7%	55.0%		53.2%	50.0%	31.3%	
07-08	37.0%	57.4%	57.4%		57.0%	55.3%	44.7%	
08-09	47.5%	50.6%	50.8%		49.6%	48.9%	65.0%	
09-10	58.0%	53.7%	54.0%		51.6%	51.1%	65.8%	PI Y1
10-11	68.5%	48.1%	48.2%		46.7%	46.0%	38.6%	FR Y1
State Average 2-11; 2010-11	67.3%	58.4%	49.5%	70.1%	49.0%	48.7%	36.1%	
11-12	79.0%							PI Y2

ELA

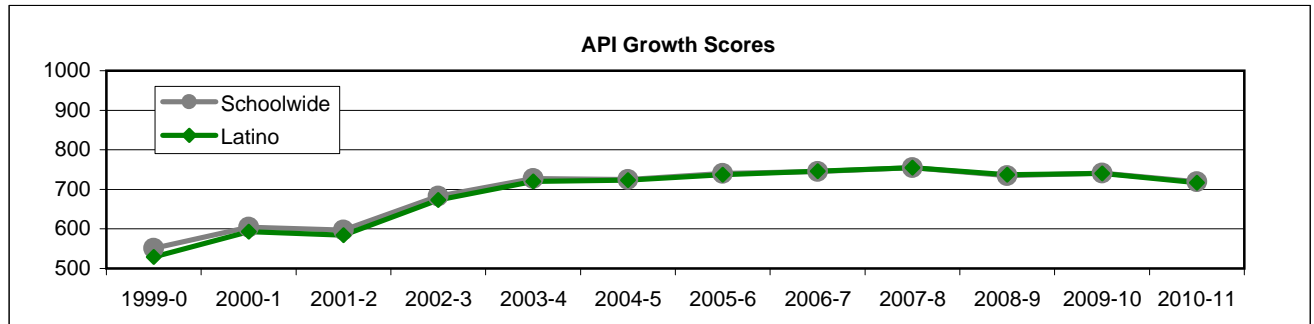


MATH



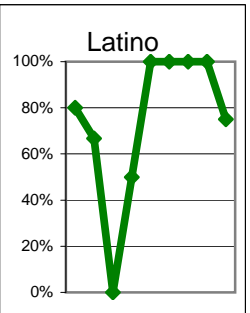
### Exceed State Academic Performance Index (API) Growth Goals

	Schoolwide			Latino			White		
	Base	Growth/ Goal Met	STATE API (2-6)	Base	Growth/ Goal Met	STATE API (2-6)	Base	Growth/ Goal Met	STATE API (2-6)
2003-4	678	727 Met		668	720 Met				
2004-5	729	725 Not Met		721	723 Not Met				
2005-6	725	740 Met	751	723	737 Met	687			838
2006-7	739	745 Met	761	737	746 Met	702			840
2007-8	754	755 NotMet	776	755	755 NotMet	722			850
2008-9	762	735 NotMet	790	762	737 NotMet	738			862
2009-10	735	741 Met	800	737	740 NotMet	752			868
2008-9	741	719 NotMet	808	740	717 NotMet	763			873



### Increase Participation Across Demographic Spectrum in Advanced Courses

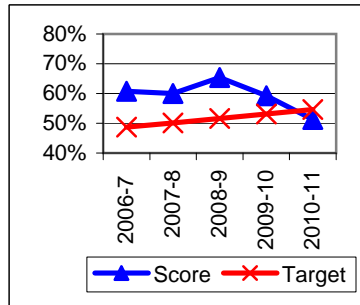
GATE (percent of all GATE students, Aeries 12-2010)	Latino		White		All Others	
	Number	Percent	Number	Percent	Number	Percent
2003-4	4	80.0%	0	0.0%	1	20.0%
2004-5	2	66.7%	0	0.0%	1	33.3%
2005-6	0	0.0%	1	100.0%	0	0.0%
2006-7	1	50.0%	1	50.0%	0	0.0%
2007-8	1	100.0%	0	0.0%	0	0.0%
2008-9	2	100.0%	0	0.0%	0	0.0%
2009-10	1	100.0%	0	0.0%	0	0.0%
<b>Note: In 2010 ethnicity/race definitions changed</b>						Non-Latino
2010-11	3	100.0%			0	0.0%
2011-12	3	75.0%			1	0.0%



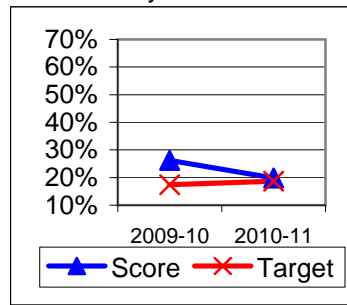
## Progress on English Learners Gaining One Proficiency Level Annually and Attaining English Language Proficiency

Taken from DataQuest	AMAO 1 Gained one Level on CELDT		AMAO 2 Gained English Proficiency			
	Target	Score	Target	Score	Target	Score
2003-4	51.0%		30.0%			
2004-5	51.5%	57.1%	30.7%	40.6%		
2005-6	52.0%	58.4%	31.4%	35.4%		
2006-7	48.7%	60.7%	27.2%	47.2%	New Norms	
2007-8	50.1%	60.0%	28.9%	44.0%		
2008-9	51.6%	65.4%	30.6%	44.0%		
			Less than 5 years cohort		Greater than 5 years cohort	
2009-10	53.1%	59.3%	17.4%	26.2%	41.3%	55.1%
2010-11	54.6%	51.3%	18.7%	19.8%	43.2%	55.2%

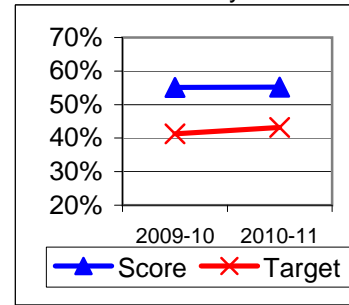
AMAO 1



AMAO 2 < 5 years

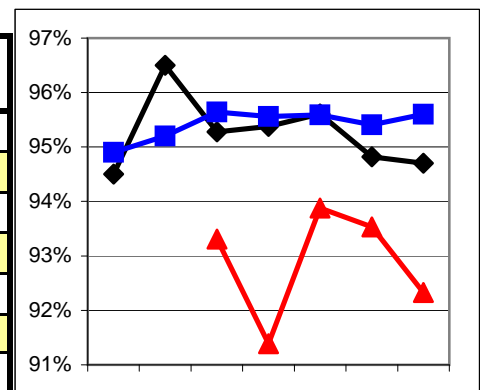


AMAO 2 > 5 years



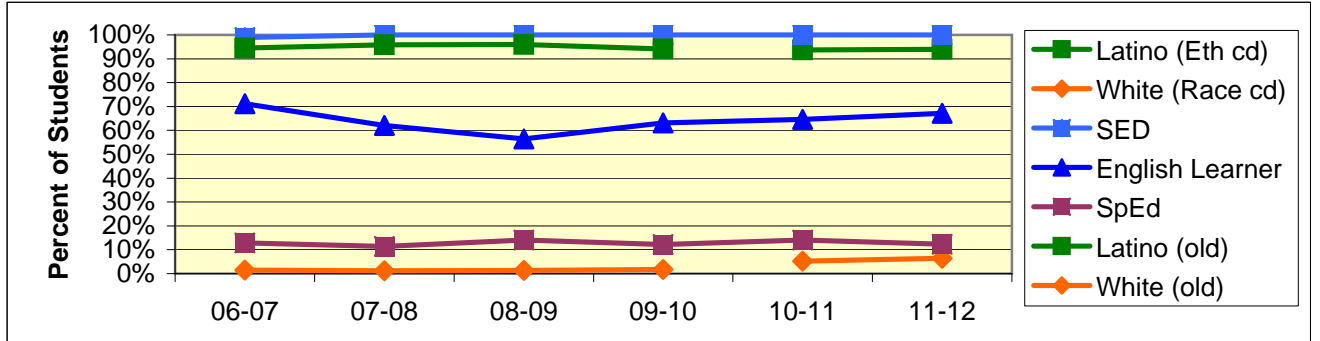
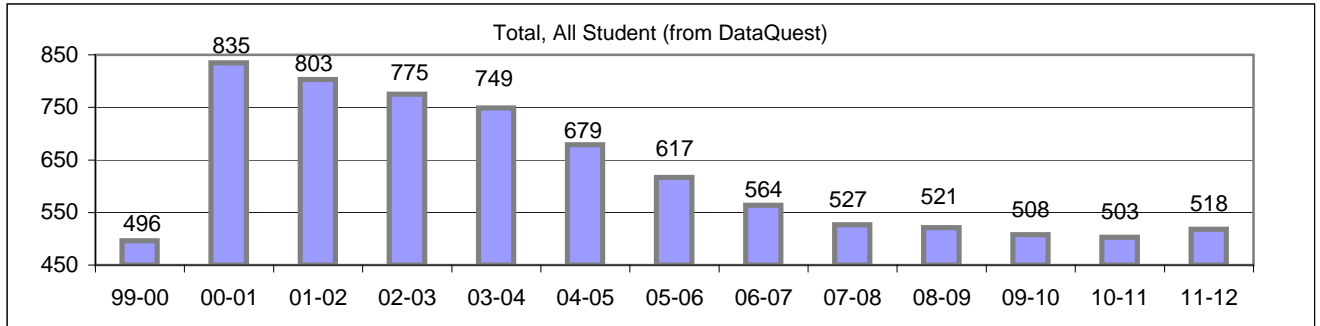
## Increase Efforts to Enhance Revenue

Attendance (Percent over year) (Attendance Office)	Lowest Month	Whole Year	District
2004-5		94.5%	94.9%
2005-6		96.5%	95.2%
2006-7	93.3%	95.3%	95.6%
2007-8	91.4%	95.4%	95.6%
2008-9	93.9%	95.6%	95.6%
2009-10	93.5%	94.8%	95.4%
2010-11	92.3%	94.7%	95.6%



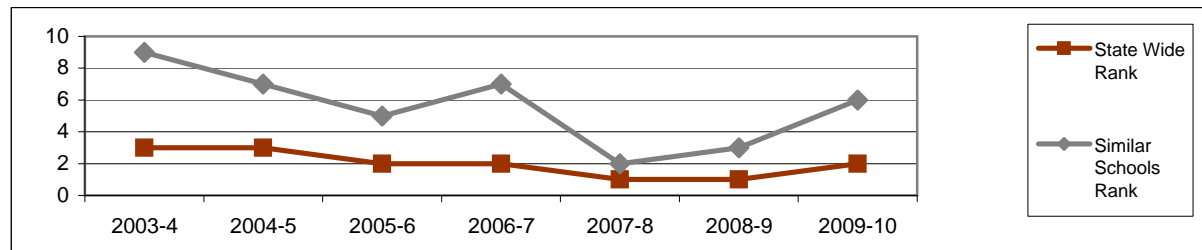
## Board Focus Goals: Franklin Elementary (22) - Sept. 2011

Demographics (K-6, Sept 7, 2011, Aeries)	Total	Female	Male	Latino (Eth cd)	White (Race cd)	SED	English Learner	SpEd
Number	518	253	265	487	33	518	348	64
Percent of Total		48.8%	51.2%	94.0%	6.4%	100.0%	67.2%	12.4%



### Achieve a State Similar School Ranking of 8 or Higher (scale = 1-10)

	State Wide Rank	Similar Schools Rank	Similar Schools Latino	Similar Schools White	Similar Schools SED	Similar Schools EL	Similar Schools Disab
2003-4	3	9	9	na	9	na	na
2004-5	3	7	6	na	7	5	na
2005-6	2	5	6	na	5	3	na
2006-7	2	7	7	na	8	5	na
2007-8	1	2	2	na	3	3	na
2008-9	1	3					
2009-10	2	6					



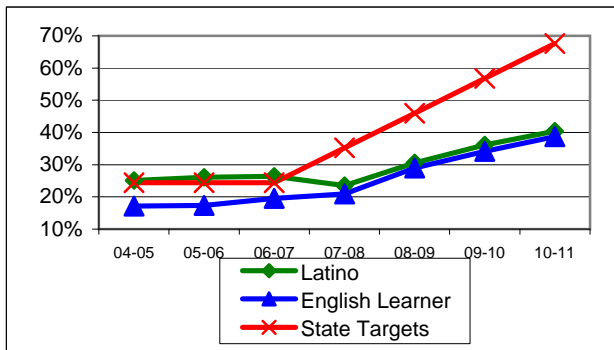
Franklin Continued

**Exceed Federal Adequate Yearly Progress (AYP) Accountability Goals** (Blue = Not enough students, Bold/underline/italic = Made by adjustment, Red = Did not pass

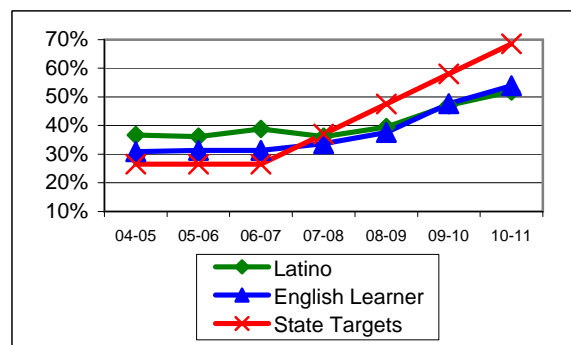
English Language Arts (ELA): Percent Proficient or Higher	State Targets	Schoolwide	Latino	White	Socio-Econ Disadv	English Learner	Stud with Disab	
04-05	24.4%	25.3%	25.1%		25.3%	17.2%	1.8%	Mark 1
05-06	24.4%	26.5%	26.1%		26.5%	17.4%	1.9%	Mark 2
06-07	24.4%	26.3%	26.4%		26.3%	19.5%	7.1%	PI Y1
07-08	35.2%	24.5%	23.5%		25.1%	20.9%	16.7%	PI Y2
08-09	46.0%	<u>32.2%</u>	<u>30.6%</u>		<u>33.0%</u>	<u>29.0%</u>	<u>21.8%</u>	PI Y3
09-10	56.8%	<u>36.8%</u>	<u>36.1%</u>		<u>36.8%</u>	<u>34.1%</u>	20.8%	PI Y4
10-11	67.6%	40.2%	<u>40.4%</u>		39.9%	<u>38.7%</u>	<u>28.6%</u>	PI Y5
State Average 2-11; 2010-11	67.0%	56.2%	44.7%	72.3%	44.0%	38.7%	34.3%	
11-12	78.4%							PI Y5

Math: Percent Proficient or Higher	State Targets	Schoolwide	Latino	White	Socio-Econ Disadv	English Learner	Stud with Disab	
04-05	26.5%	36.4%	36.7%		36.4%	30.9%	0.0%	
05-06	26.5%	36.7%	36.1%		36.7%	31.3%	13.0%	
06-07	26.5%	39.1%	38.8%		39.1%	31.3%	8.9%	PI Y1
07-08	37.0%	<u>36.5%</u>	<u>36.1%</u>		37.0%	33.7%	18.5%	PI Y2
08-09	47.5%	40.1%	39.5%		<u>41.0%</u>	<u>37.6%</u>	<u>30.9%</u>	PI Y3
09-10	58.0%	<u>48.0%</u>	<u>47.1%</u>		<u>48.0%</u>	<u>47.7%</u>	23.9%	PI Y4
10-11	68.5%	<u>52.5%</u>	<u>51.9%</u>		<u>52.2%</u>	<u>53.9%</u>	<u>38.1%</u>	PI Y5
State Average 2-11; 2010-11	67.3%	58.4%	49.5%	70.1%	49.0%	48.7%	36.1%	
11-12	79.0%							PI Y5

ELA

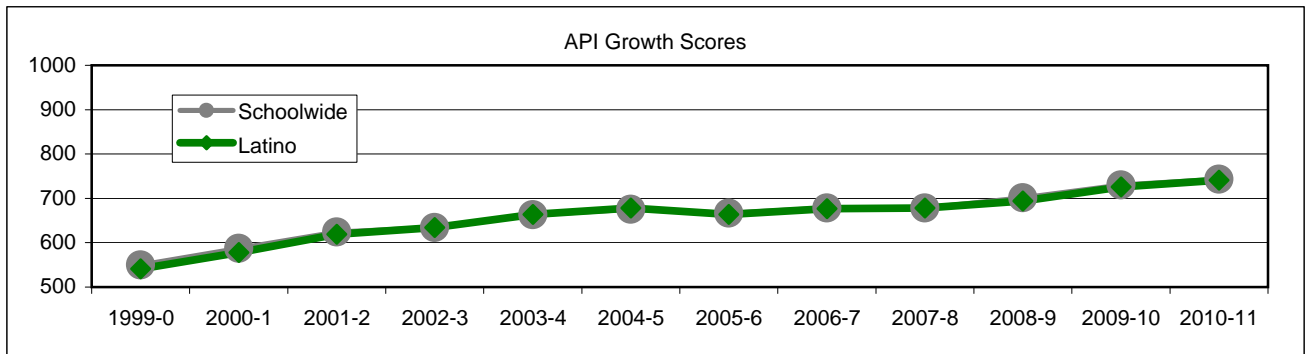


MATH



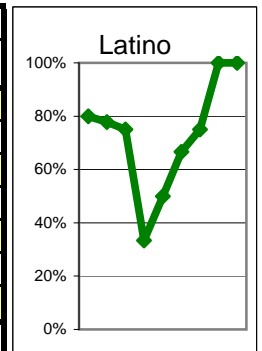
### Exceed State Academic Performance Index (API) Growth Goals

	Schoolwide			Latino			White		
	Base	Growth/ Goal Met	STATE API (2-6)	Base	Growth/ Goal Met	STATE API (2-6)	Base	Growth/ Goal Met	STATE API (2-6)
2003-4	633	663 Met		633	664 Met				
2004-5	666	675 Met		666	678 Met				
2005-6	675	667 Not Met	751	678	664 Not Met	687			838
2006-7	669	678 Met	761	666	677 Met	702			840
2007-8	697	678 NotMet	776	695	678 NotMet	722			850
2008-9	677	701 Met	790	676	694 Met	738			862
2009-10	698	730 Met	800	691	726 Met	752			868
2010-11	734	743 Met	808	730	741 Met	763			873



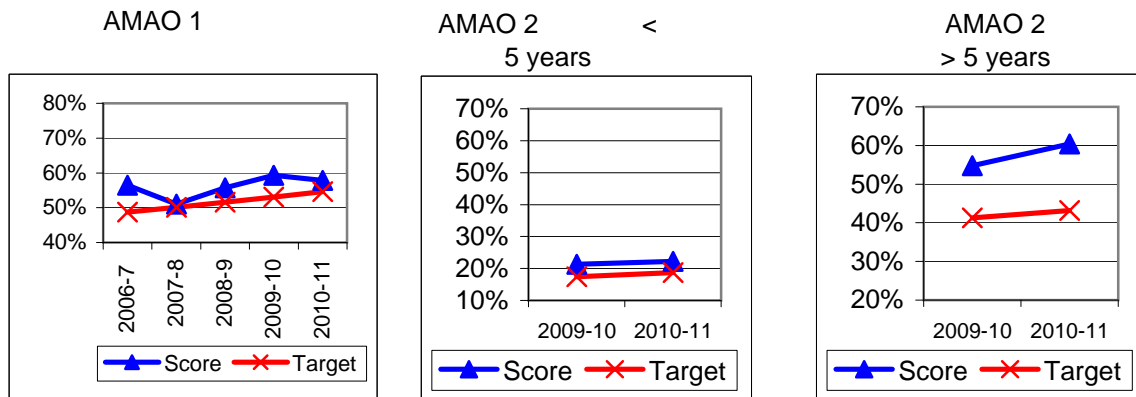
### Increase Participation Across Demographic Spectrum in Advanced Courses

GATE (percent of all GATE students, Aeries 12-2010)	Latino		White		All Others	
	Number	Percent	Number	Percent	Number	Percent
2003-4	8	80.0%	2	20.0%	0	0.0%
2004-5	7	77.8%	2	22.2%	0	0.0%
2005-6	3	75.0%	1	25.0%	0	0.0%
2006-7	1	33.3%	1	33.3%	1	33.3%
2007-8	1	50.0%	1	50.0%	0	0.0%
2008-9	2	66.7%	1	33.3%	0	0.0%
2009-10	3	75.0%	1	25.0%	0	0.0%
<b>Note: In 2010 ethnicity/race definitions changed</b>					Non-Latino	
2010-11	6	100.0%			0	0.0%
2011-12	8	100.0%			0	0.0%



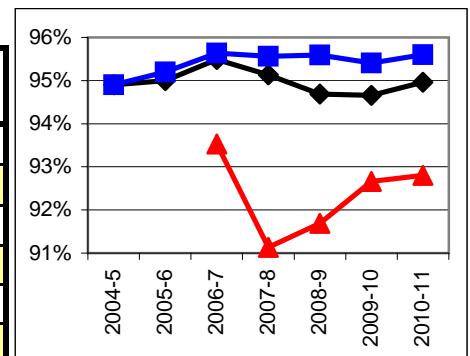
## Progress on English Learners Gaining One Proficiency Level Annually and Attaining English Language Proficiency

Taken from DataQuest	AMAO 1 Gained one Level on CELDT		AMAO 2 Gained English Proficiency			
	Target	Score	Target	Score	Target	Score
2003-4	51.0%		30.0%			
2004-5	51.5%	55.3%	30.7%	35.1%		
2005-6	52.0%	55.5%	31.4%	35.2%		
2006-7	48.7%	56.5%	27.2%	33.5%	New Norms	
2007-8	50.1%	51.0%	28.9%	32.0%		
2008-9	51.6%	55.7%	30.6%	35.5%		
			Less than 5 years cohort		Greater than 5 years cohort	
2009-10	53.1%	59.3%	17.4%	21.3%	41.3%	54.8%
2010-11	54.6%	57.8%	18.7%	22.2%	43.2%	60.4%



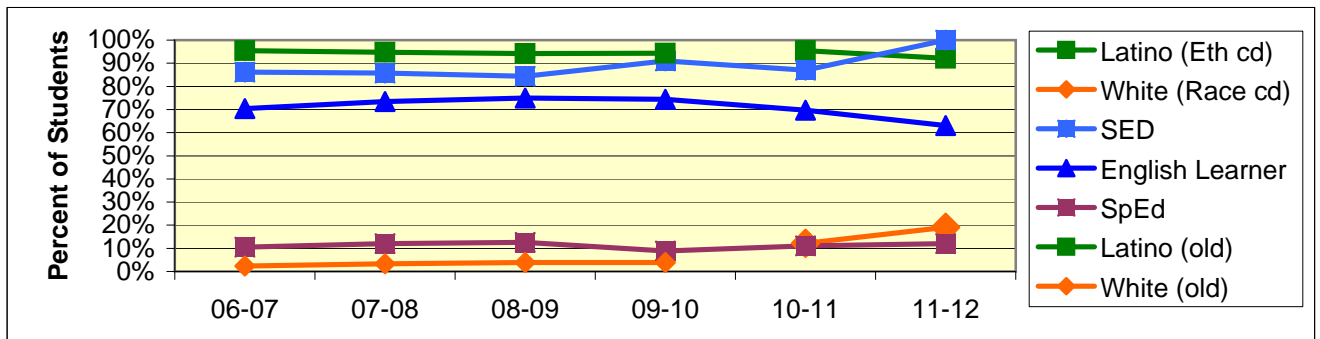
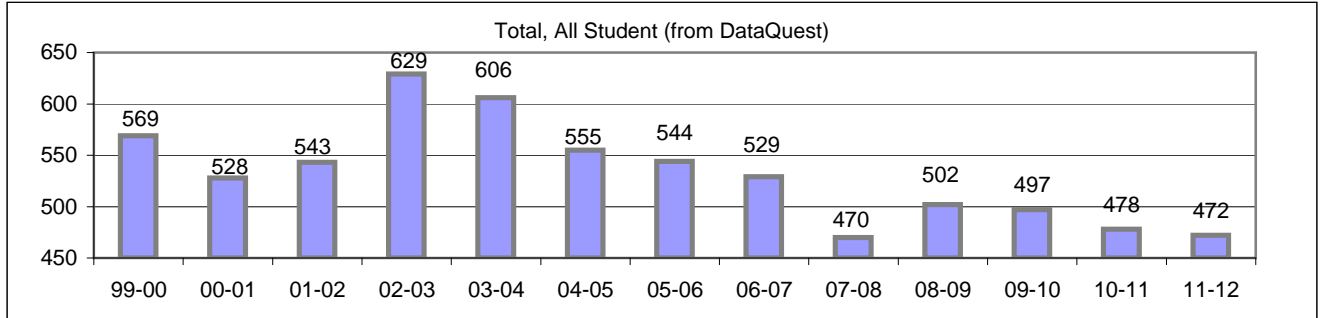
## Increase Efforts to Enhance Revenue

Attendance (Percent over year) (Attendance Office)	Lowest Month	Whole Year	District
2004-5		94.9%	94.9%
2005-6		95.0%	95.2%
2006-7	93.5%	95.5%	95.6%
2007-8	91.1%	95.1%	95.6%
2008-9	91.7%	94.7%	95.6%
2009-10	92.7%	94.7%	95.4%
2010-11	92.8%	95.0%	95.6%



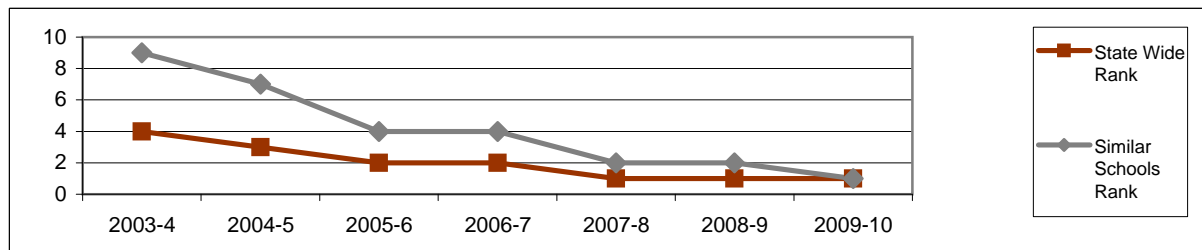
## Board Focus Goals: Harding Univ. Partnership School (24) - Sept. 2011

Demographics (K-6, Sept 7, 2011, Aeries)	Total	Female	Male	Latino (Eth cd)	White (Race cd)	SED	English Learner	SpEd
Number	472	204	268	435	90	472	298	57
Percent of Total		43.2%	56.8%	92.2%	19.1%	100.0%	63.1%	12.1%



### Achieve a State Similar School Ranking of 8 or Higher (scale = 1-10)

	State Wide Rank	Similar Schools Rank	Similar Schools Latino	Similar Schools White	Similar Schools SED	Similar Schools EL	Similar Schools Disab
2003-4	4	9	10	na	10	na	na
2004-5	3	7	7	na	6	8	na
2005-6	2	4	3	na	4	4	na
2006-7	2	4	4	na	5	5	na
2007-8	1	2	2	na	3	3	na
2008-9	1	2					
2009-10	1	1					



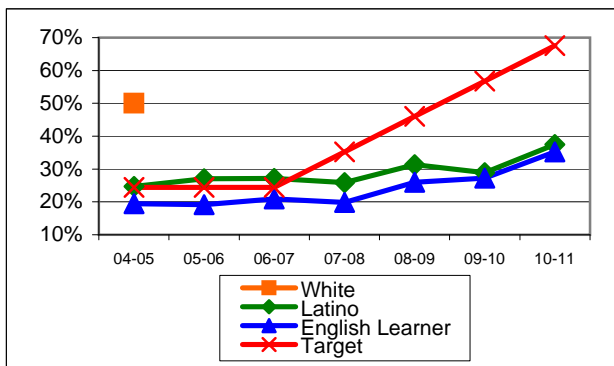
Harding Continued

**Exceed Federal Adequate Yearly Progress (AYP) Accountability Goals** (Blue = Not enough students, Bold/underline/italic = Made by adjustment, Red = Did not pass

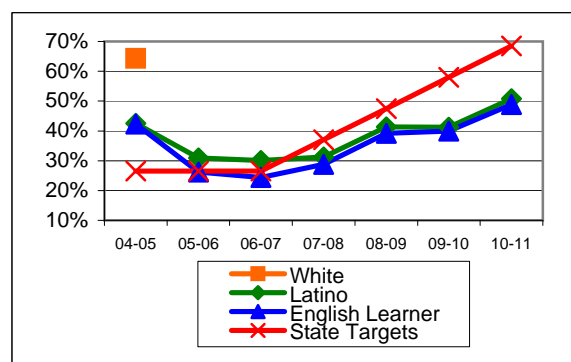
English Language Arts (ELA): Percent Proficient or Higher	State Targets	Schoolwide	Latino	White	Socio-Econ Disadv	English Learner	Stud with Disab	
04-05	24.4%	25.8%	24.7%	50.0%	21.3%	19.4%	2.6%	Mark 1
05-06	24.4%	28.3%	27.0%		25.6%	19.2%	11.8%	Mark 2
06-07	24.4%	27.8%	27.1%		26.3%	20.9%	8.7%	PI Y1
07-08	35.2%	27.1%	25.9%		25.4%	19.8%	25.8%	PI Y2
08-09	46.0%	<u>32.9%</u>	<u>31.3%</u>		30.0%	<u>26.0%</u>	27.6%	PI Y3
09-10	56.8%	30.7%	28.9%		29.9%	27.2%	23.5%	PI Y4
10-11	67.6%	<u>39.0%</u>	<u>37.5%</u>		<u>36.7%</u>	<u>35.2%</u>	23.4%	PI Y5
State Average 2-11; 2010-11	67.0%	56.2%	44.7%	72.3%	44.0%	38.7%	34.3%	
11-12	78.4%							FR Y5

Math: Percent Proficient or Higher	State Targets	Schoolwide	Latino	White	Socio-Econ Disadv	English Learner	Stud with Disab	
04-05	26.5%	43.3%	42.5%	64.3%	39.5%	42.3%	18.4%	
05-06	26.5%	31.9%	30.9%		30.0%	<u>26.2%</u>	20.6%	
06-07	26.5%	30.1%	30.1%		27.1%	<u>24.4%</u>	8.7%	PI Y1
07-08	37.0%	31.7%	31.2%		<u>31.7%</u>	28.8%	27.3%	PI Y2
08-09	47.5%	<u>41.8%</u>	<u>41.3%</u>		<u>41.3%</u>	<u>39.2%</u>	28.1%	PI Y3
09-10	58.0%	42.3%	41.2%		41.7%	39.9%	33.3%	PI Y4
10-11	68.5%	<u>51.3%</u>	<u>50.8%</u>		<u>49.8%</u>	<u>48.9%</u>	38.3%	PI Y5
State Average 2-11; 2010-11	67.3%	58.4%	49.5%	70.1%	49.0%	48.7%	36.1%	
11-12	79.0%							FR Y5

ELA



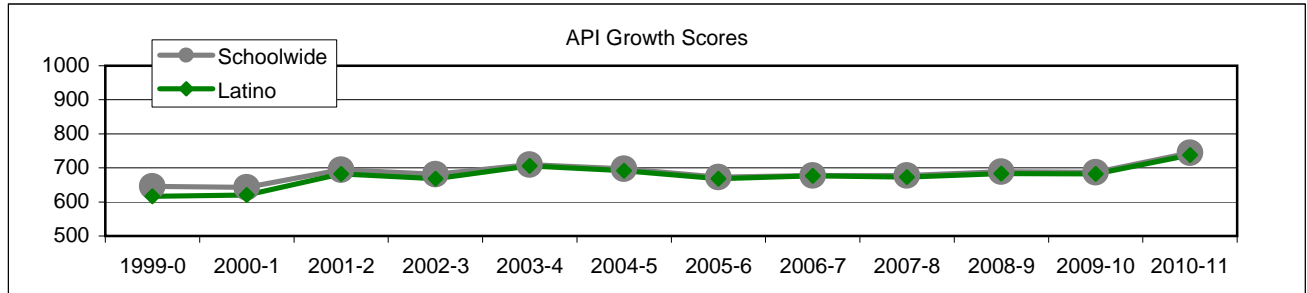
MATH



Harding Continued

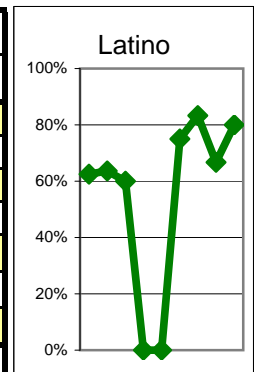
### Exceed State Academic Performance Index (API) Growth Goals

	Schoolwide			Latino			White		
	Base	Growth/ Goal Met	STATE API (2-6)	Base	Growth/ Goal Met	STATE API (2-6)	Base	Growth/ Goal Met	STATE API (2-6)
2003-4	682	710 Met		668	706 Met				
2004-5	702	697 NotMet		698	692 NotMet				
2005-6	697	673 NotMet	751	692	668 NotMet	687			838
2006-7	673	678 NotMet	761	669	677 Met	702			840
2007-8	689	678 NotMet	776	687	673 NotMet	722			850
2008-9	680	689 Met	790	676	683 Met	738			862
2009-10	687	687 NotMet	800	681	682 NotMet	752			868
2008-9	687	744 Met	808	682	738 Met	763			873



### Increase Participation Across Demographic Spectrum in Advanced Courses

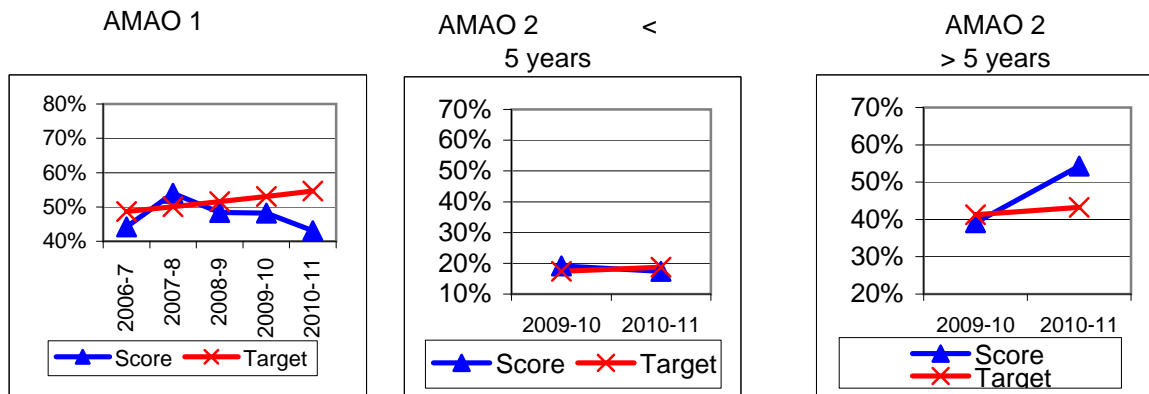
GATE (percent of all GATE students, Aeries 12-2010)	Latino		White		All Others	
	Number	Percent	Number	Percent	Number	Percent
2003-4	10	62.5%	5	31.3%	1	6.3%
2004-5	7	63.6%	3	27.3%	1	9.1%
2005-6	3	60.0%	1	20.0%	1	20.0%
2006-7	0	0.0%	1	100.0%	0	0.0%
2007-8	0	0.0%	1	100.0%	0	0.0%
2008-9	3	75.0%	1	25.0%	0	0.0%
2009-10	5	83.3%	1	16.7%	0	0.0%
<b>Note: In 2010 ethnicity/race definitions changed</b>					Non-Latino	
2010-11	6	66.7%			3	33.3%
2011-12	8	80.0%			2	20.0%



Harding Continued

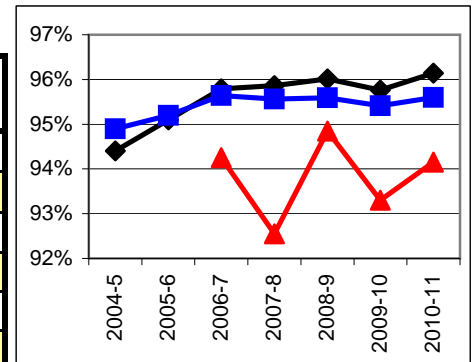
## Progress on English Learners Gaining One Proficiency Level Annually and Attaining English Language Proficiency

Taken from DataQuest	AMAO 1 Gained one Level on CELDT		AMAO 2 Gained English Proficiency			
	Target	Score	Target	Score	Target	Score
2003-4	51.0%		30.0%			
2004-5	51.5%	51.3%	30.7%	35.3%		
2005-6	52.0%	60.1%	31.4%	46.8%		
2006-7	48.7%	44.2%	27.2%	28.3%	New Norms	
2007-8	50.1%	54.0%	28.9%	38.0%		
2008-9	51.6%	48.4%	30.6%	31.1%		
			Less than 5 years cohort		Greater than 5 years cohort	
2009-10	53.1%	48.2%	17.4%	19.1%	41.3%	39.1%
2010-11	54.6%	43.1%	18.7%	17.4%	43.2%	54.3%



## Increase Efforts to Enhance Revenue

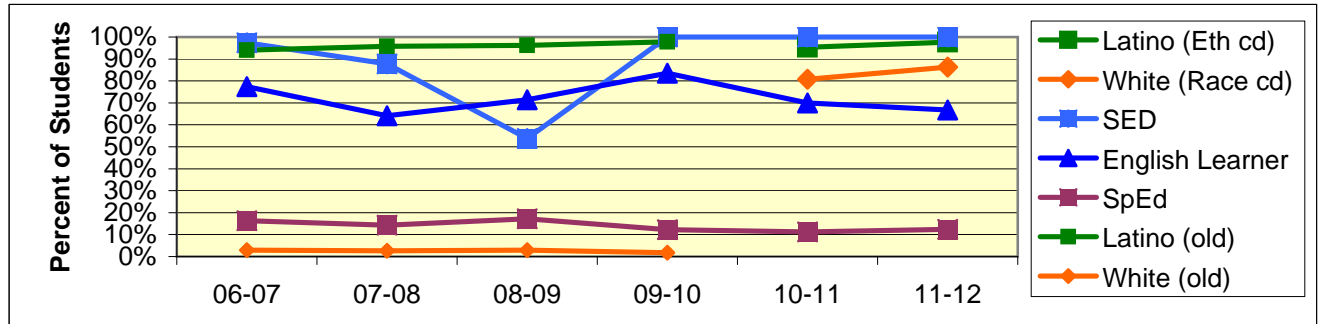
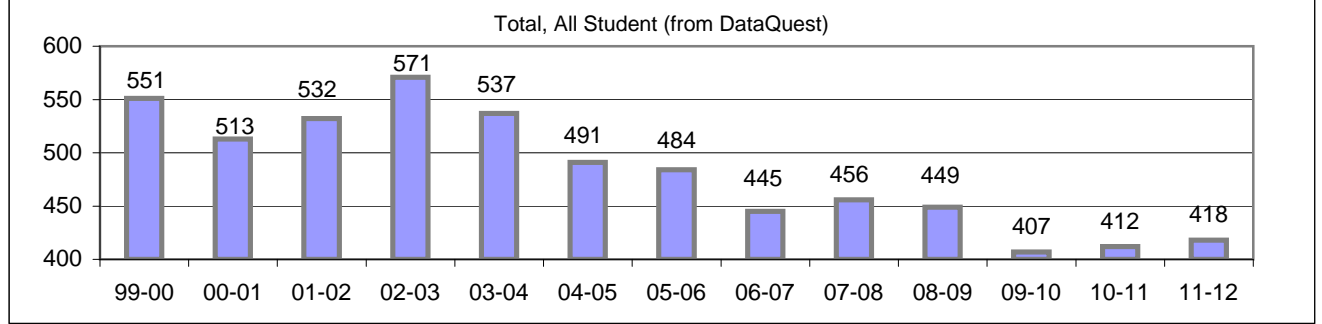
Attendance (Percent over year) (Attendance Office)	Lowest Month	Whole Year	District
2004-5		94.4%	94.9%
2005-6		95.1%	95.2%
2006-7	94.3%	95.8%	95.6%
2007-8	92.6%	95.9%	95.6%
2008-9	94.9%	96.0%	95.6%
2009-10	93.3%	95.8%	95.4%
2010-11	94.2%	96.1%	95.6%



Prepared by Dr. Davis Hayden, Director of Research, Evaluation, and Technology

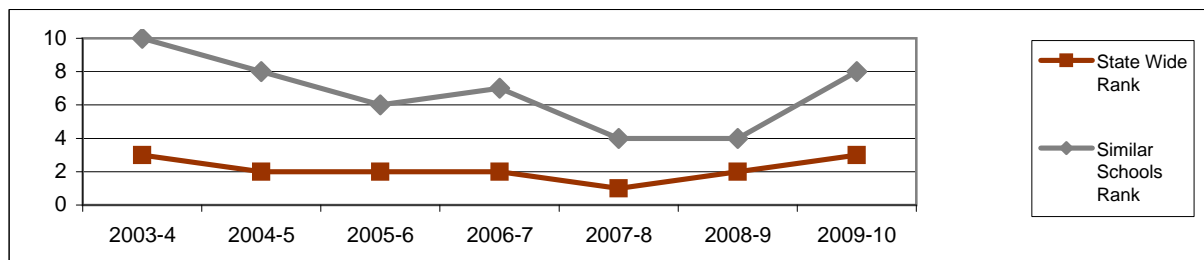
## Board Focus Goals: McKinley Elementary (27) - Sept. 2011

Demographics (K-6, Sept 7, 2011, Aeries)	Total	Female	Male	Latino (Eth cd)	White (Race cd)	SED	English Learner	SpEd
Number	418	216	202	408	361	418	279	52
Percent of Total		51.7%	48.3%	97.6%	86.4%	100.0%	66.7%	12.4%



### Achieve a State Similar School Ranking of 8 or Higher (scale = 1-10)

	State Wide Rank	Similar Schools Rank	Similar Schools Latino	Similar Schools White	Similar Schools SED	Similar Schools EL	Similar Schools Disab
2003-4	3	10	9	na	10	na	na
2004-5	2	8	8	na	8	6	na
2005-6	2	6	6	na	6	7	na
2006-7	2	7	7	na	8	6	na
2007-8	1	4	4	na	4	4	na
2008-9	2	4					
2009-10	3	8					



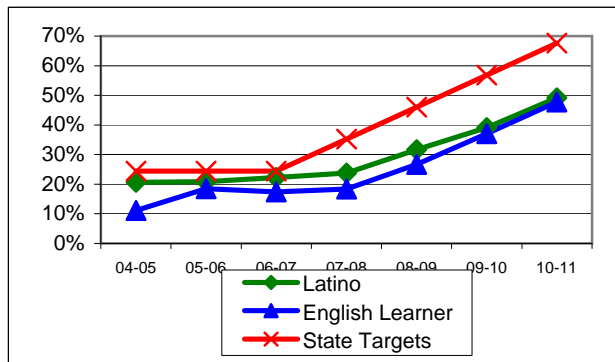
McKinley Continued

**Exceed Federal Adequate Yearly Progress (AYP) Accountability Goals** (Blue = Not enough students, Bold/underline/italic = Made by adjustment, Red = Did not pass

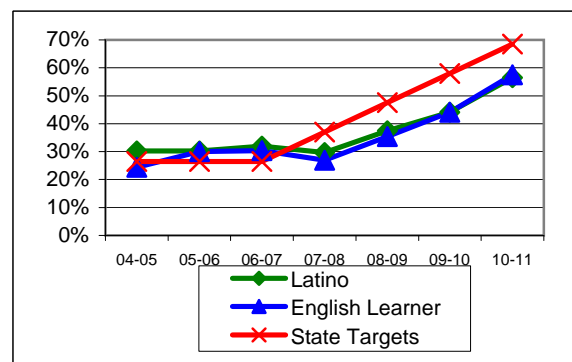
English Language Arts (ELA): Percent Proficient or Higher	State Targets	Schoolwide	Latino	White	Socio-Econ Disadv	English Learner	Stud with Disab	
04-05	24.4%	22.2%	20.6%		22.2%	11.1%	8.7%	PI Y1
05-06	24.4%	22.6%	20.8%		22.6%	<u>18.5%</u>	0.0%	PI Y2
06-07	24.4%	24.7%	22.3%		24.7%	17.4%	4.0%	PI Y3
07-08	35.2%	25.7%	23.8%	72.7%	25.1%	18.4%	6.6%	PI Y4
08-09	46.0%	<u>32.7%</u>	<u>31.7%</u>		<u>31.8%</u>	<u>26.7%</u>	9.4%	PI Y5
09-10	56.8%	<u>39.7%</u>	<u>39.1%</u>		<u>39.7%</u>	<u>37.1%</u>	35.6%	PI Y5
10-11	67.6%	<u>49.6%</u>	<u>49.2%</u>		<u>49.6%</u>	<u>47.7%</u>	50.0%	FR Y5
State Average 2-11; 2010-11	67.0%	56.2%	44.7%	72.3%	44.0%	38.7%	34.3%	
11-12	78.4%							NOT PI

Math: Percent Proficient or Higher	State Targets	Schoolwide	Latino	White	Socio-Econ Disadv	English Learner	Stud with Disab	
04-05	26.5%	31.9%	30.2%		31.9%	24.4%	13.0%	PI Y1
05-06	26.5%	31.5%	30.2%		31.5%	30.0%	<u>8.0%</u>	PI Y2
06-07	26.5%	34.1%	32.0%		34.1%	30.4%	20.0%	PI Y3
07-08	37.0%	31.3%	29.7%	72.7%	30.8%	26.9%	<u>23.0%</u>	PI Y4
08-09	47.5%	<u>38.3%</u>	<u>37.5%</u>		<u>37.6%</u>	<u>35.4%</u>	24.6%	PI Y5
09-10	58.0%	<u>44.6%</u>	<u>44.1%</u>		<u>44.6%</u>	<u>44.1%</u>	46.7%	PI Y5
10-11	68.5%	<u>56.8%</u>	<u>56.5%</u>		<u>56.8%</u>	<u>57.5%</u>	52.3%	FR Y5
State Average 2-11; 2010-11	67.3%	58.4%	49.5%	70.1%	49.0%	48.7%	36.1%	
11-12	79.0%							NOT PI

ELA

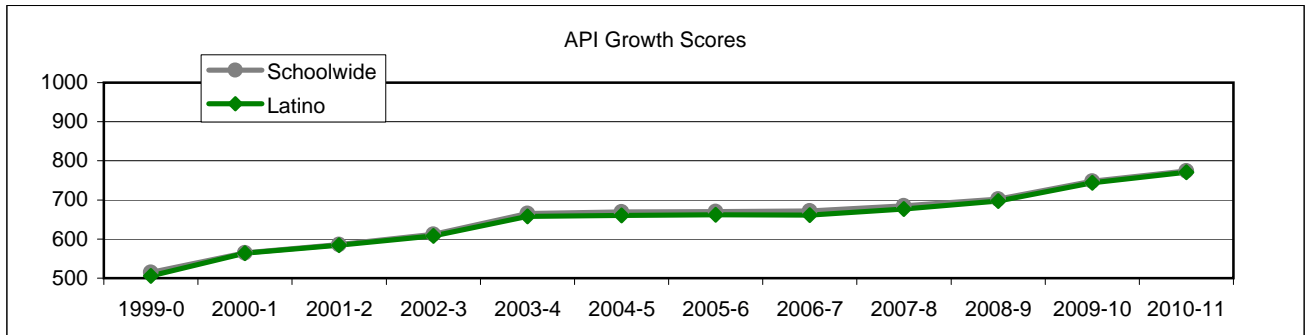


MATH



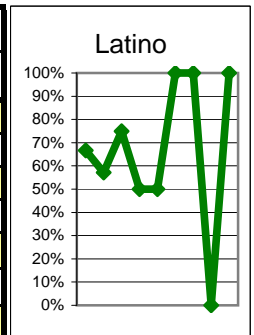
### Exceed State Academic Performance Index (API) Growth Goals

	Schoolwide			Latino			White		
	Base	Growth/ Goal Met	STATE API (2-6)	Base	Growth/ Goal Met	STATE API (2-6)	Base	Growth/ Goal Met	STATE API (2-6)
2003-4	597	665 Met		594	658 Met				
2004-5	665	669 Not Met		658	660 Not Met				
2005-6	669	670 Not Met	751	660	662 Not Met	687			838
2006-7	668	672 Not Met	761	660	661 Not Met	702			840
2007-8	691	685 Not Met	776	680	677 Not Met	722			850
2008-9	674	702 Met	790	667	697 Met	738			862
2009-10	700	748 Met	800	694	744 Met	752			868
2008-9	748	774 Met	808	744	771 Met	763			873



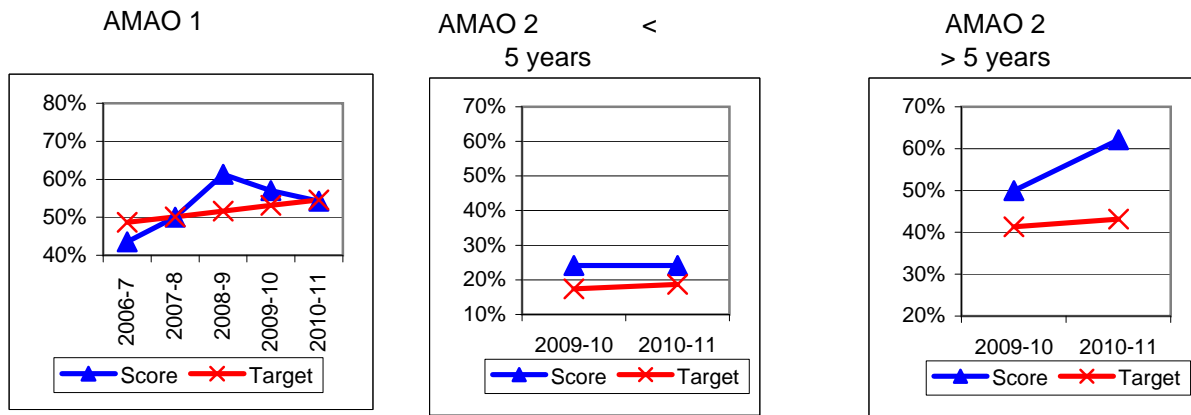
### Increase Participation Across Demographic Spectrum in Advanced Courses

GATE (percent of all GATE students, Aeries 12-2010)	Latino		White		All Others	
	Number	Percent	Number	Percent	Number	Percent
2003-4	2	66.7%	0	0.0%	1	33.3%
2004-5	4	57.1%	2	28.6%	1	14.3%
2005-6	3	75.0%	1	25.0%	0	0.0%
2006-7	1	50.0%	1	50.0%	0	0.0%
2007-8	1	50.0%	1	50.0%	0	0.0%
2008-9	1	100.0%	0	0.0%	0	0.0%
2009-10	1	100.0%	0	0.0%	0	0.0%
<b>Note: In 2010 ethnicity/race definitions changed</b>						Non-Latino
2010-11	0	0.0%			0	0.0%
2011-12	3	100.0%			0	0.0%



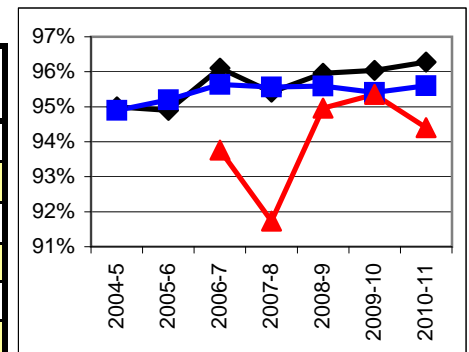
## Progress on English Learners Gaining One Proficiency Level Annually and Attaining English Language Proficiency

Taken from DataQuest	AMAO 1 Gained one Level on CELDT		AMAO 2 Gained English Proficiency			
	Target	Score	Target	Score	Target	Score
2003-4	51.0%		30.0%			
2004-5	51.5%	54.0%	30.7%	34.1%		
2005-6	52.0%	55.5%	31.4%	34.5%		
2006-7	48.7%	43.5%	27.2%	21.3%	New Norms	
2007-8	50.1%	50.0%	28.9%	34.0%		
2008-9	51.6%	61.3%	30.6%	40.8%		
			Less than 5 years cohort		Greater than 5 years cohort	
2009-10	53.1%	57.0%	17.4%	24.1%	41.3%	50.0%
2010-11	54.6%	54.2%	18.7%	24.1%	43.2%	62.1%



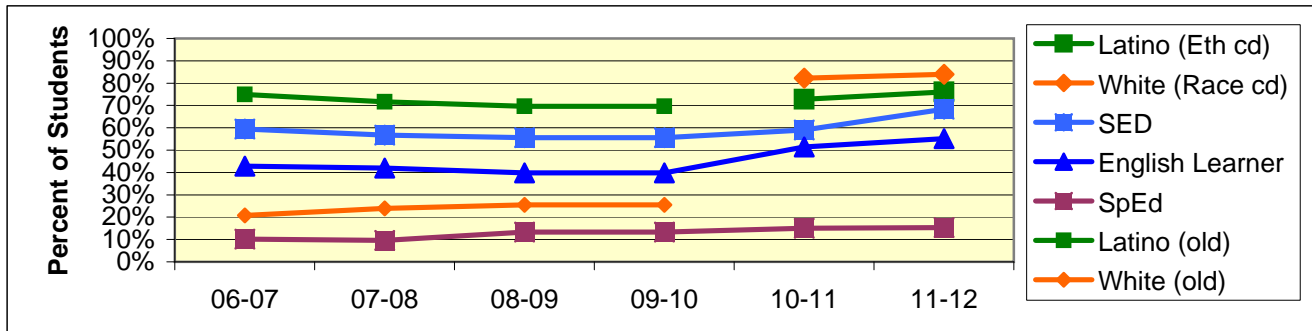
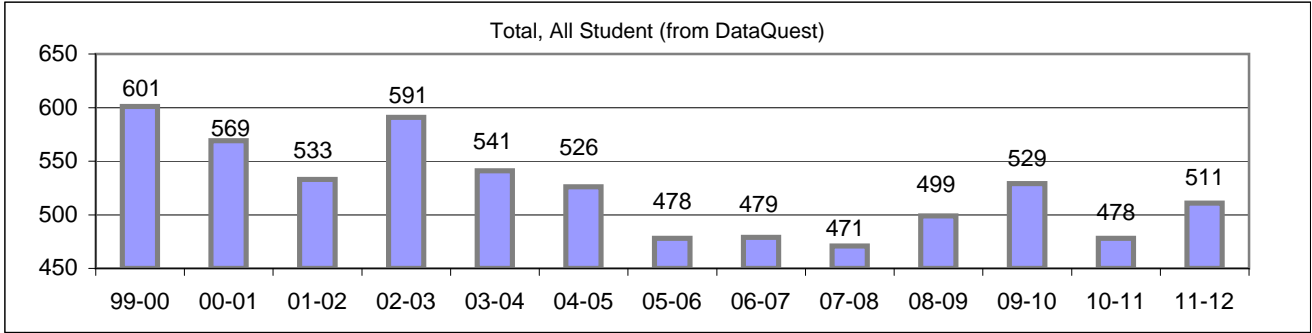
## Increase Efforts to Enhance Revenue

Attendance (Percent over year) (Attendance Office)	Lowest Month	Whole Year	District
2004-5		95.0%	94.9%
2005-6		94.9%	95.2%
2006-7	93.8%	96.1%	95.6%
2007-8	91.7%	95.4%	95.6%
2008-9	95.0%	96.0%	95.6%
2009-10	95.4%	96.0%	95.4%
2010-11	94.4%	96.3%	95.6%



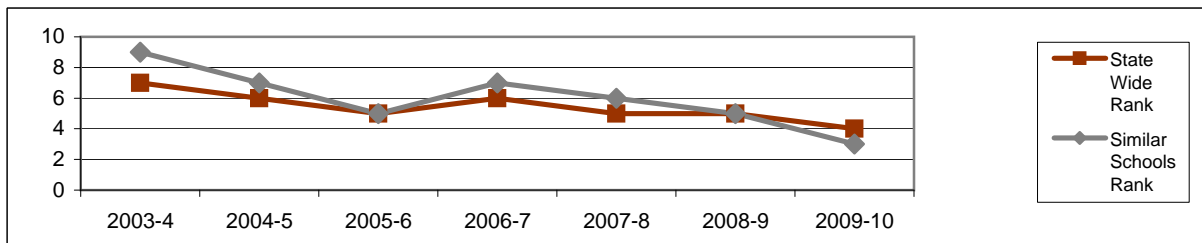
## Board Focus Goals: Monroe Elementary (28) - Sept. 2011

Demographics (K-6, Sept 7, 2011, Aeries)	Total	Female	Male	Latino (Eth cd)	White (Race cd)	SED	English Learner	SpEd
Number	511	250	261	389	429	349	282	78
Percent of Total		48.9%	51.1%	76.1%	84.0%	68.3%	55.2%	15.3%



### Achieve a State Similar School Ranking of 8 or Higher (scale = 1-10)

	State Wide Rank	Similar Schools Rank	Similar Schools Latino	Similar Schools White	Similar Schools SED	Similar Schools EL	Similar Schools Disab
2003-4	7	9	8	10	7	na	na
2004-5	6	7	3	10	3	3	na
2005-6	5	5	4	7	3	3	na
2006-7	6	7	5	na	5	2	na
2007-8	5	6	2	10	2	2	na
2008-9	5	5					
2009-10	4	3					

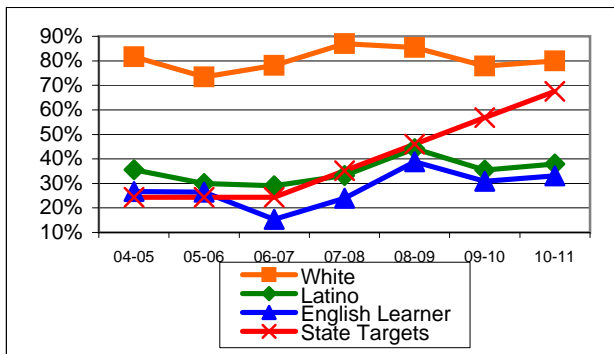


**Exceed Federal Adequate Yearly Progress (AYP) Accountability Goals** (Blue = Not enough students, Bold/underline/italic = Made by adjustment, Red = Did not pass

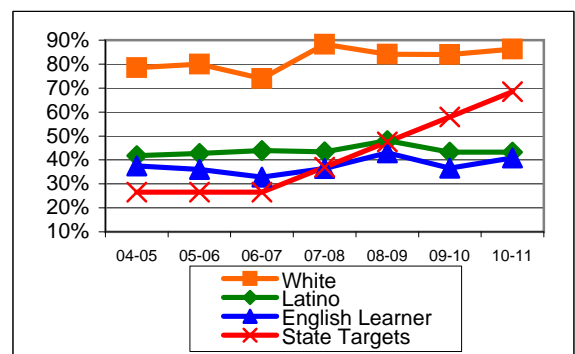
English Language Arts (ELA): Percent Proficient or Higher	State Targets	Schoolwide	Latino	White	Socio-Econ Disadv	English Learner	Stud with Disab	
04-05	24.4%	48.1%	35.6%	81.7%	31.1%	26.7%	19.6%	
05-06	24.4%	41.6%	30.0%	73.4%	27.7%	26.5%	8.8%	
06-07	24.4%	42.1%	29.0%	78.1%	26.7%	<b>15.3%</b>	0.0%	<b>1 Mark</b>
07-08	35.2%	47.4%	<u>33.2%</u>	87.0%	<u>31.6%</u>	<u>24.0%</u>	15.4%	
08-09	46.0%	56.1%	<u>44.2%</u>	85.4%	<u>42.0%</u>	<u>38.9%</u>	38.6%	
09-10	56.8%	<b>47.7%</b>	<b>35.5%</b>	<b>77.8%</b>	<b>32.4%</b>	<b>30.9%</b>	<b>31.9%</b>	<b>1 Mark</b>
10-11	67.6%	<b>48.1%</b>	<b>37.9%</b>	<b>80.0%</b>	<b>33.2%</b>	<b>33.1%</b>	<u>40.0%</u>	<b>PI Y1</b>
State Average 2-11; 2010-11	67.0%	<b>56.2%</b>	<b>44.7%</b>	<b>72.3%</b>	<b>44.0%</b>	<b>38.7%</b>	<b>34.3%</b>	
11-12	78.4%							<b>PI Y2</b>

Math: Percent Proficient or Higher	State Targets	Schoolwide	Latino	White	Socio-Econ Disadv	English Learner	Stud with Disab	
04-05	26.5%	51.1%	41.8%	78.5%	36.4%	37.5%	21.7%	
05-06	26.5%	52.0%	42.7%	80.0%	38.8%	36.1%	17.6%	
06-07	26.5%	52.4%	43.9%	74.0%	39.8%	32.8%	3.6%	
07-08	37.0%	54.3%	43.4%	88.2%	42.2%	<u>36.4%</u>	23.1%	
08-09	47.5%	58.4%	48.0%	84.1%	<b>44.4%</b>	<u>43.0%</u>	36.4%	<b>1 Mark</b>
09-10	58.0%	<b>53.3%</b>	<b>43.2%</b>	84.0%	<b>40.1%</b>	<b>36.6%</b>	<b>41.2%</b>	<b>2 Mark</b>
10-11	68.5%	<b>52.5%</b>	<b>43.3%</b>	<b>86.2%</b>	<b>43.5%</b>	<u>40.8%</u>	<b>33.3%</b>	<b>PI Y1</b>
State Average 2-11; 2010-11	67.3%	<b>58.4%</b>	<b>49.5%</b>	<b>70.1%</b>	<b>49.0%</b>	<b>48.7%</b>	<b>36.1%</b>	
11-12	79.0%							<b>PI Y2</b>

ELA

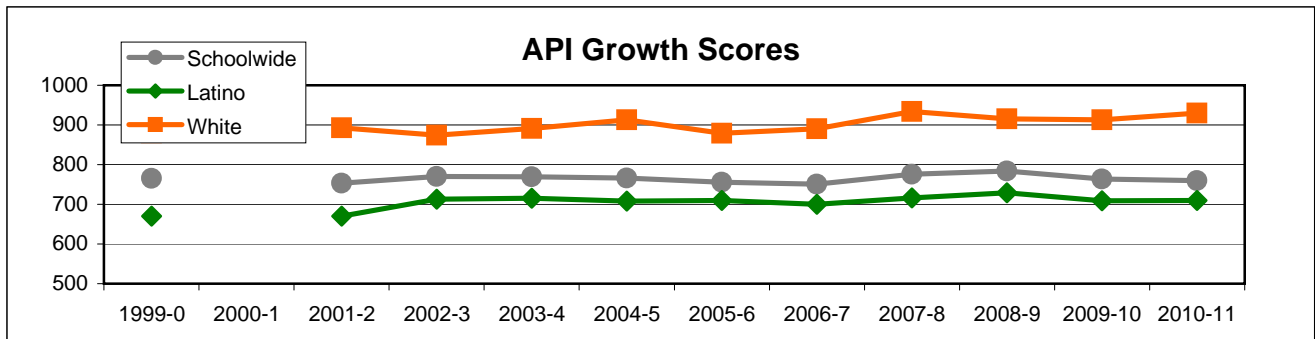


MATH



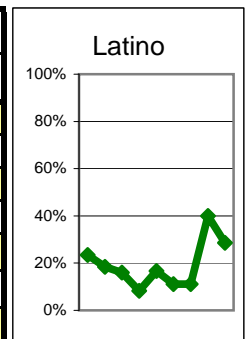
### Exceed State Academic Performance Index (API) Growth Goals

	Schoolwide			Latino			White		
	Base	Growth/ Goal Met	STATE API (2-6)	Base	Growth/ Goal Met	STATE API (2-6)	Base	Growth/ Goal Met	STATE API (2-6)
2003-4	766	769 Met		707	715 Met		874	891 Met	
2004-5	763	766 Met		712	708 NotMet		881	913 Met	
2005-6	766	756 NotMet	751	708	710 Met	687	913	879 Met	838
2006-7	753	751 NotMet	761	707	700 NotMet	702	877	890 Met	840
2007-8	768	776 Met	776	721	716 NotMet	722	892	934 Met	850
2008-9	764	784 Met	790	707	729 Met	738	927	915 Met	862
2009-10	783	764 NotMet	800	728	709 NotMet	752	922	913 Met	868
2008-9	764	760 NotMet	808	709	710 NotMet	763	913	930 Met	873



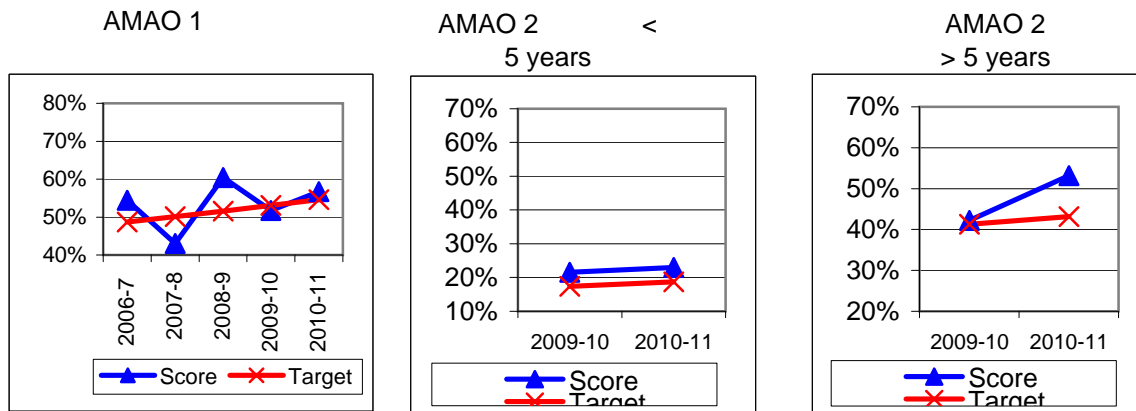
### Increase Participation Across Demographic Spectrum in Advanced Courses

GATE (percent of all GATE students, Aeries 12-2010)	Latino		White		All Others	
	Number	Percent	Number	Percent	Number	Percent
2003-4	11	23.4%	30	63.8%	6	12.8%
2004-5	7	18.4%	27	71.1%	4	10.5%
2005-6	4	16.0%	17	68.0%	4	16.0%
2006-7	1	8.3%	10	83.3%	1	8.3%
2007-8	2	16.7%	9	75.0%	1	8.3%
2008-9	1	11.1%	7	77.8%	1	11.1%
2009-10	1	11.1%	8	88.9%	0	0.0%
<b>Note: In 2010 ethnicity/race definitions changed</b>					Non-Latino	
2010-11	2	40.0%			3	60.0%
2011-12	2	28.6%			5	71.4%



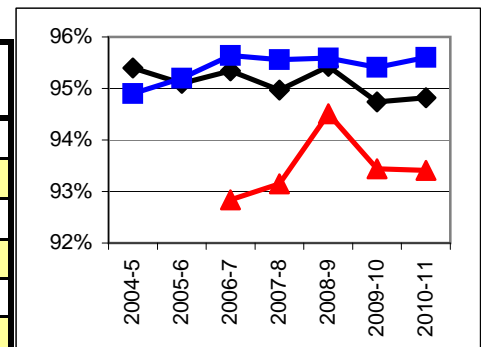
## Progress on English Learners Gaining One Proficiency Level Annually and Attaining English Language Proficiency

Taken from DataQuest	AMAO 1 Gained one Level on CELDT		AMAO 2 Gained English Proficiency			
	Target	Score	Target	Score	Target	Score
2003-4	51.0%		30.0%			
2004-5	51.5%	62.2%	30.7%	45.3%		
2005-6	52.0%	46.4%	31.4%	28.4%		
2006-7	48.7%	54.4%	27.2%	39.5%	New Norms	
2007-8	50.1%	43.0%	28.9%	20.0%		
2008-9	51.6%	60.4%	30.6%	46.7%		
			Less than 5 years cohort		Greater than 5 years cohort	
2009-10	53.1%	51.7%	17.4%	21.6%	41.3%	42.2%
2010-11	54.6%	56.7%	18.7%	23.0%	43.2%	53.2%



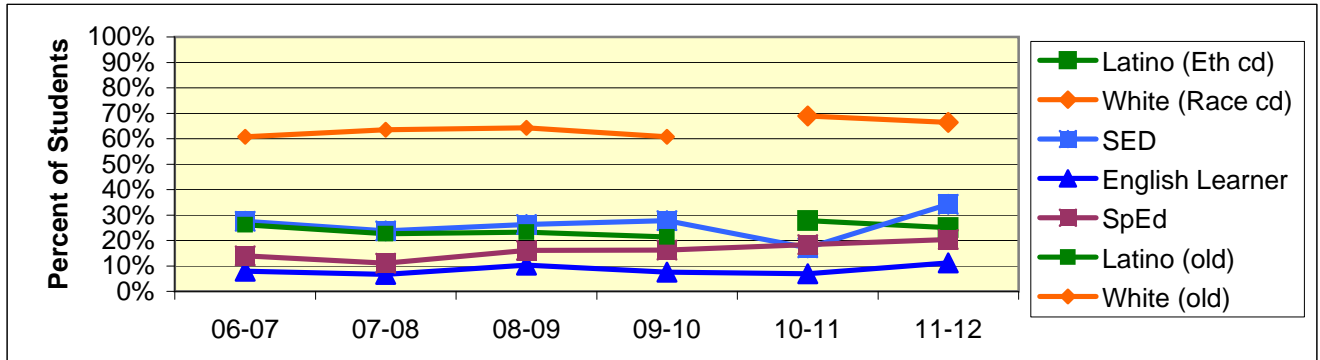
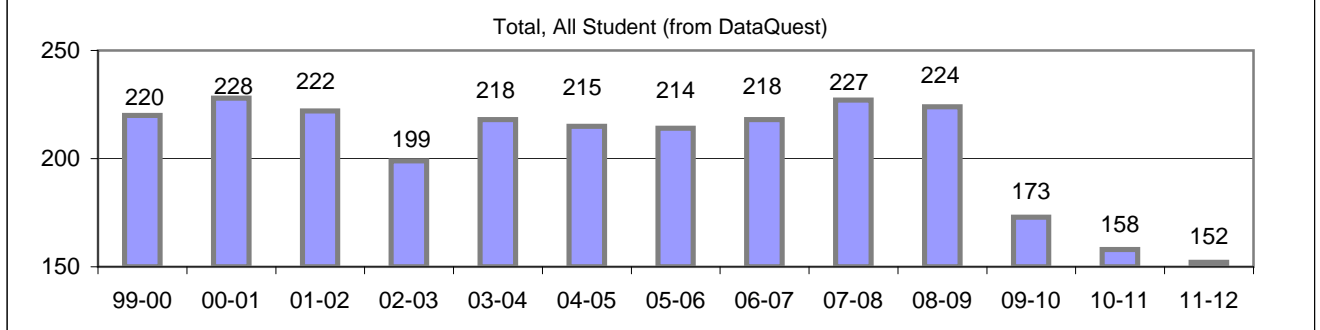
## Increase Efforts to Enhance Revenue

Attendance (Percent over year) (Attendance Office)	Lowest Month	Whole Year	District
2004-5		95.4%	94.9%
2005-6		95.1%	95.2%
2006-7	92.8%	95.3%	95.6%
2007-8	93.2%	95.0%	95.6%
2008-9	94.5%	95.4%	95.6%
2009-10	93.4%	94.7%	95.4%
2010-11	93.4%	94.8%	95.6%



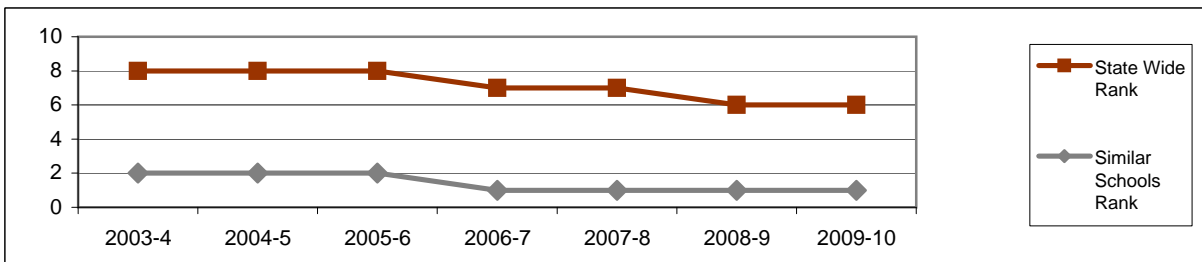
# Board Focus Goals: Open Alternative Elementary (25) - Sept. 2011

Demographics (K-6, Sept 7, 2011, Aeries)	Total	Female	Male	Latino (Eth cd)	White (Race cd)	SED	English Learner	SpEd
Number	152	63	89	38	101	52	17	31
Percent of Total		41.4%	58.6%	25.0%	66.4%	34.2%	11.2%	20.4%



## Achieve a State Similar School Ranking of 8 or Higher (scale = 1-10)

	State Wide Rank	Similar Schools Rank	Similar Schools Latino	Similar Schools White	Similar Schools SED	Similar Schools EL	Similar Schools Disab
2003-4	8	2	na	2	na	na	na
2004-5	8	2	na	2	na	na	na
2005-6	8	2	na	2	na	na	na
2006-7	7	1	na	1	na	na	na
2007-8	7	1	na	2	na	na	na
2008-9	6	1					
2009-10	6	1					



Open Alternative Continued

**Exceed Federal Adequate Yearly Progress (AYP) Accountability Goals** (Blue = Not enough students, Bold/underline/italic = Made by adjustment, Red = Did not pass

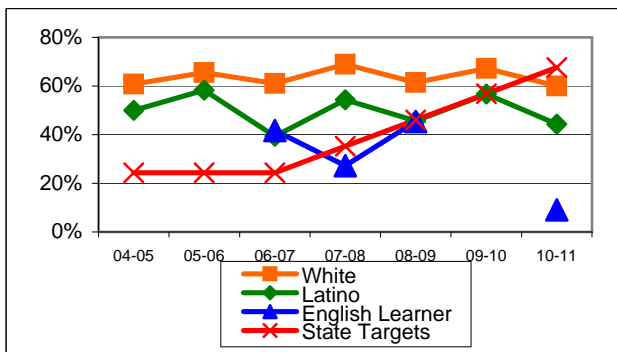
English Language Arts (ELA): Percent Proficient or Higher	State Targets	Schoolwide	Latino	White	Socio-Econ Disadv	English Learner	Stud with Disab
04-05	24.4%	58.3%	50.0%	60.8%	50.0%		25.0%
05-06	24.4%	65.7%	58.3%	65.5%	48.6%		56.3%
06-07	24.4%	58.0%	39.4%	61.0%	54.1%	41.7%	46.2%
07-08	35.2%	64.8%	54.3%	69.0%	45.9%	27.3%	50.0%
08-09	46.0%	60.3%	45.7%	61.5%	48.8%	45.5%	57.1%
09-10	56.8%	65.8%	56.7%	67.2%	52.9%		52.4%
10-11	67.6%	55.3%	44.4%	60.0%	33.3%	9.1%	42.9%
State Average 2-11; 2010-11	67.0%	56.2%	44.7%	72.3%	44.0%	38.7%	34.3%
11-12	78.4%						

**1 Mark**

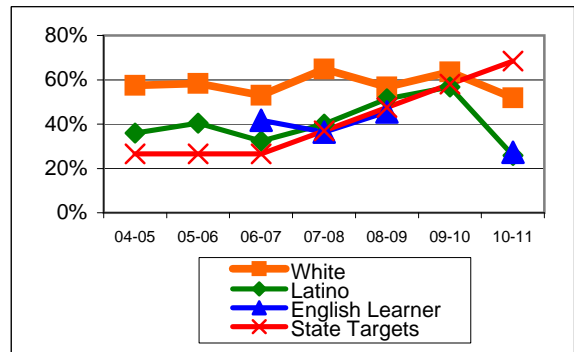
Math: Percent Proficient or Higher	State Targets	Schoolwide	Latino	White	Socio-Econ Disadv	English Learner	Stud with Disab
04-05	26.5%	53.0%	35.9%	57.5%	28.6%		14.3%
05-06	26.5%	56.8%	40.5%	58.3%	45.9%		41.2%
06-07	26.5%	47.8%	32.4%	53.0%	40.5%	41.7%	29.4%
07-08	37.0%	58.0%	40.0%	64.8%	48.6%	36.4%	40.9%
08-09	47.5%	56.4%	51.4%	56.7%	37.2%	45.5%	57.1%
09-10	58.0%	61.2%	56.7%	63.5%	55.9%		38.1%
10-11	68.5%	42.2%	25.9%	51.9%	30.0%	27.3%	22.2%
State Average 2-11; 2010-11	67.3%	58.4%	49.5%	70.1%	49.0%	48.7%	36.1%
11-12	79.0%						

**1 Mark**

ELA



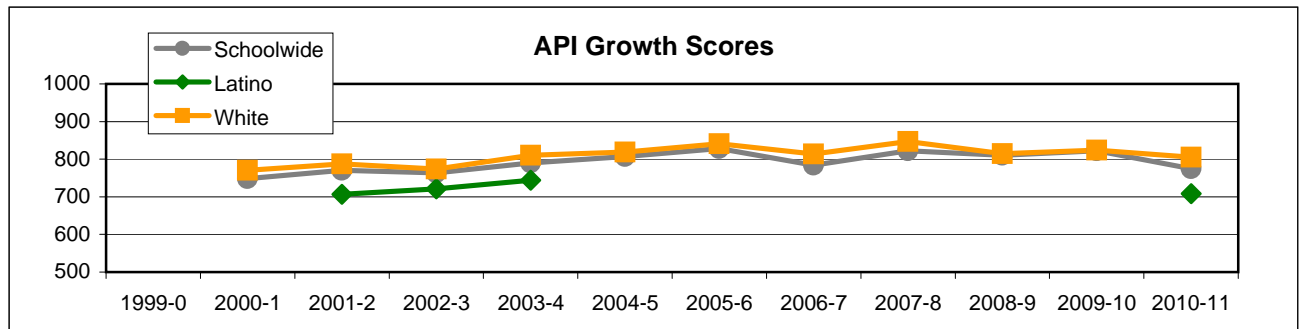
MATH



Open Alternative Continued

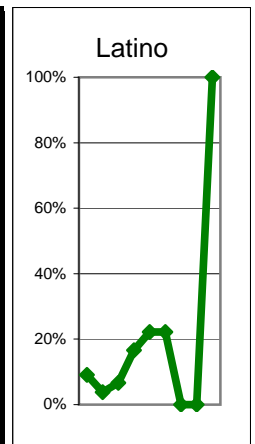
### Exceed State Academic Performance Index (API) Growth Goals

	Schoolwide			Latino			White		
	Base	Growth/ Goal Met	STATE API (2-6)	Base	Growth/ Goal Met	STATE API (2-6)	Base	Growth/ Goal Met	STATE API (2-6)
2003-4	753	790 Met		703	744 Met		764	810 Met	
2004-5	788	807 Met					807	819 Met	
2005-6	807	828 Met	751			687	819	841 Met	838
2006-7	824	784 Not Met	761			702	837	814 Met	840
2007-8	800	822 Met	776			722	823	847 Met	850
2008-9	819	810 Met	790			738	848	815 Met	862
2009-10	810	822 Met	800			752	814	824 Met	868
2008-9	822	775 Not Met	808	795	708 Not Met	763	824	805 Met	873



### Increase Participation Across Demographic Spectrum in Advanced Courses

GATE (percent of all GATE students, Aeries 12-2010)	Latino		White		All Others	
	Number	Percent	Number	Percent	Number	Percent
2003-4	1	9.1%	4	36.4%	6	54.5%
2004-5	1	3.8%	11	42.3%	14	53.8%
2005-6	1	6.7%	10	66.7%	4	26.7%
2006-7	2	16.7%	8	66.7%	2	16.7%
2007-8	2	22.2%	5	55.6%	2	22.2%
2008-9	4	22.2%	11	61.1%	3	16.7%
2009-10	0	0.0%	5	83.3%	1	16.7%
<b>Note: In 2010 ethnicity/race definitions changed</b>					Non-Latino	
2010-11	0	0.0%			2	100.0%
2011-12	1	100.0%			0	0.0%



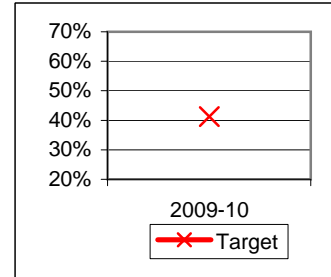
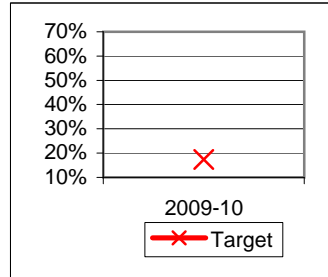
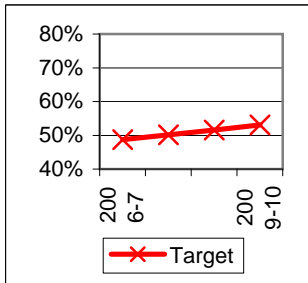
## Progress on English Learners Gaining One Proficiency Level Annually and Attaining English Language Proficiency

Taken from DataQuest	AMAO 1 Gained one Level on CELDT		AMAO 2 Gained English Proficiency			
	Target	Score	Target	Score	Target	Score
2003-4	51.0%		30.0%			
2004-5	51.5%		30.7%			
2005-6	52.0%		31.4%			
2006-7	48.7%		27.2%		New Norms	
2007-8	50.1%		28.9%			
2008-9	51.6%		30.6%			
			Less than 5 years cohort		Greater than 5 years cohort	
2009-10	53.1%		17.4%		41.3%	
2010-11	54.6%		18.7%		43.2%	

AMAO 1

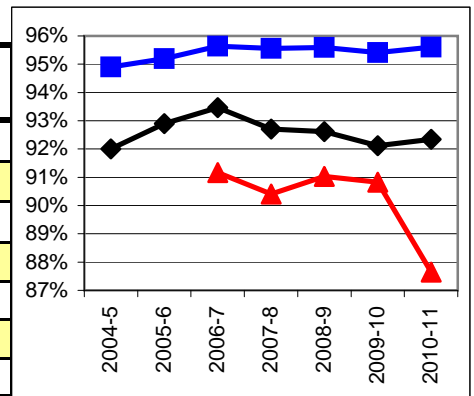
AMAO 2 <  
5 years

AMAO 2 >  
5 years



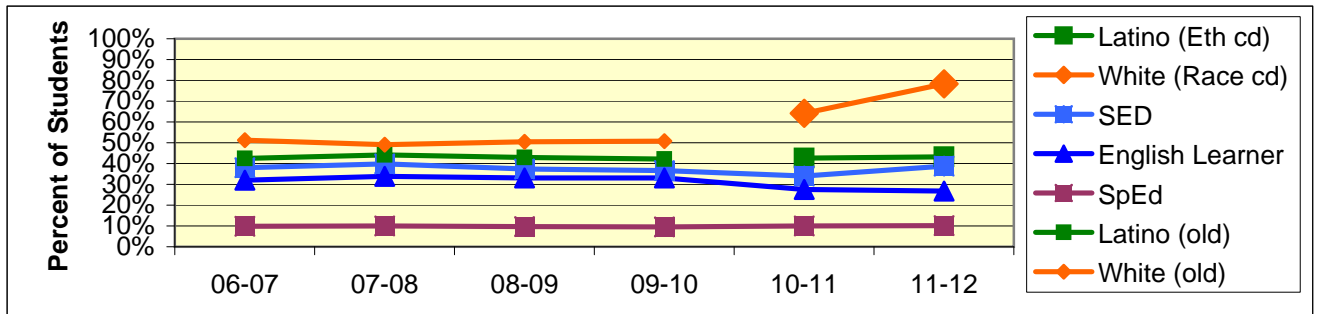
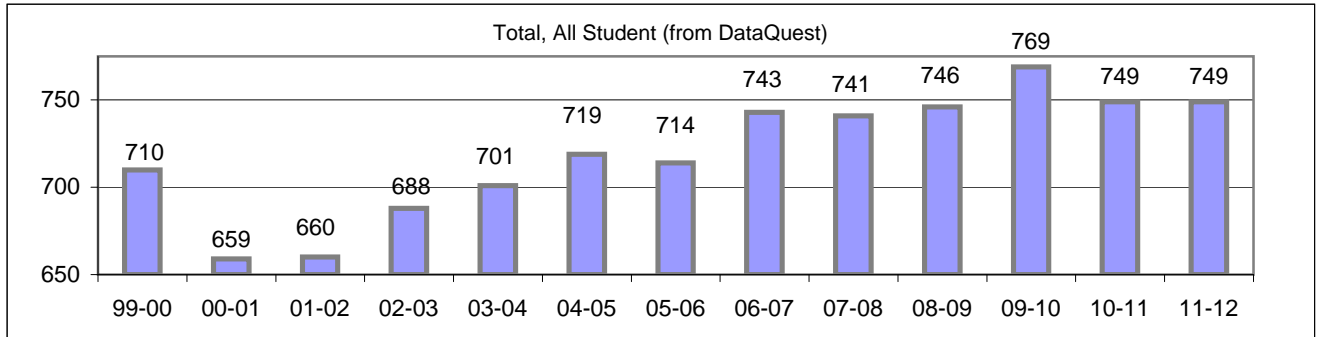
## Increase Efforts to Enhance Revenue

Attendance (Percent over year) (Attendance Office)	Lowest Month	Whole Year	District
2004-5		92.0%	94.9%
2005-6		92.9%	95.2%
2006-7	91.2%	93.5%	95.6%
2007-8	90.4%	92.7%	95.6%
2008-9	91.0%	92.6%	95.6%
2009-10	90.8%	92.1%	95.4%
2010-11	87.6%	92.3%	95.6%



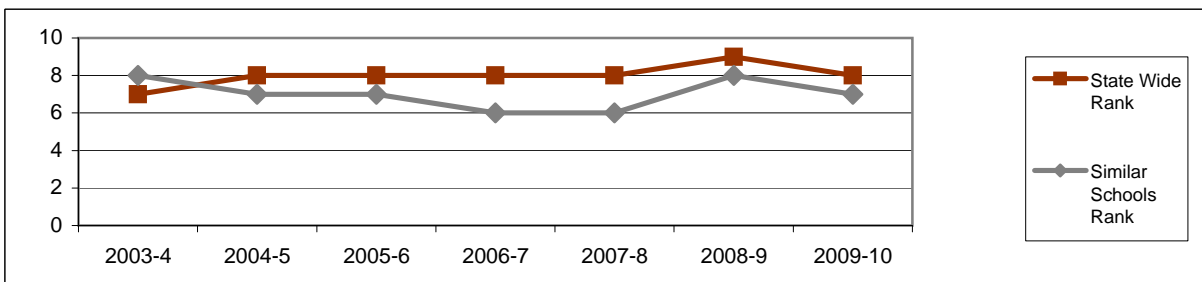
## Board Focus Goals: Peabody Elementary (29) - Sept. 2011

Demographics (K-6, Sept 7, 2011, Aeries)	Total	Female	Male	Latino (Eth cd)	White (Race cd)	SED	English Learner	SpEd
Number	749	364	385	324	586	290	200	76
Percent of Total		48.6%	51.4%	43.3%	78.2%	38.7%	26.7%	10.1%



### Achieve a State Similar School Ranking of 8 or Higher (scale = 1-10)

	State Wide Rank	Similar Schools Rank	Similar Schools Latino	Similar Schools White	Similar Schools SED	Similar Schools EL	Similar Schools Disab
2003-4	7	8	5	10	3	na	na
2004-5	8	7	3	10	2	3	na
2005-6	8	7	3	10	3	4	na
2006-7	8	6	3	10	3	3	na
2007-8	8	6	3	10	2	2	na
2008-9	9	8					
2009-10	8	7					



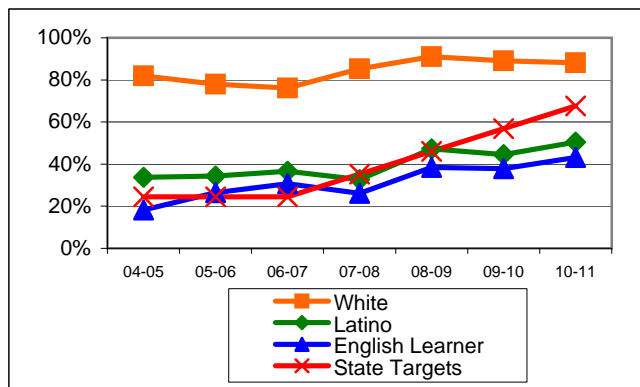
Peabody Continued

**Exceed Federal Adequate Yearly Progress (AYP) Accountability Goals** (Blue = Not enough students, **Bold/underline/italic** = Made by adjustment, **Red** = Did not pass

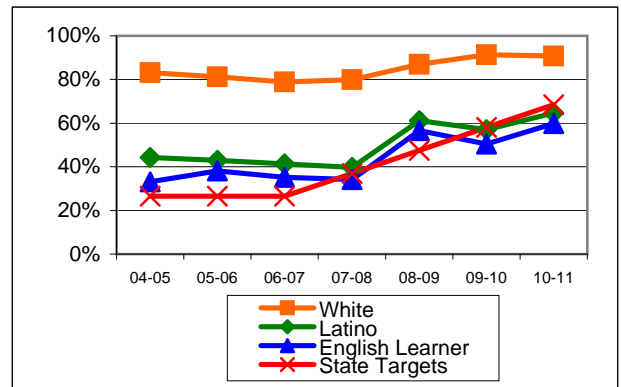
English Language Arts (ELA): Percent Proficient or Higher	State Targets	Schoolwide	Latino	White	Socio-Econ Disadv	English Learner	Stud with Disab	
04-05	24.4%	56.9%	33.7%	81.9%	25.9%	<u>18.2%</u>	15.0%	
05-06	24.4%	56.9%	34.3%	77.9%	31.5%	26.5%	26.1%	
06-07	24.4%	58.5%	36.6%	76.2%	33.5%	30.7%	21.3%	
07-08	35.2%	60.4%	<b>32.6%</b>	85.3%	<b>32.1%</b>	<b>26.1%</b>	38.0%	<b>1 Mark</b>
08-09	46.0%	71.2%	47.2%	91.0%	46.8%	<u>38.5%</u>	34.5%	
09-10	56.8%	69.4%	<b>44.6%</b>	89.1%	<b>43.3%</b>	<b>37.9%</b>	34.5%	<b>1 Mark</b>
10-11	67.6%	71.2%	<u>50.4%</u>	88.1%	<u>46.6%</u>	<u>43.1%</u>	41.4%	
State Average 2-11; 2010-11	67.0%	<b>56.2%</b>	<b>44.7%</b>	<b>72.3%</b>	<b>44.0%</b>	<b>38.7%</b>	<b>34.3%</b>	
11-12	78.4%							

Math: Percent Proficient or Higher	State Targets	Schoolwide	Latino	White	Socio-Econ Disadv	English Learner	Stud with Disab	
04-05	26.5%	63.0%	44.3%	83.2%	37.8%	33.1%	30.8%	
05-06	26.5%	62.6%	42.9%	81.3%	39.0%	38.1%	34.8%	
06-07	26.5%	61.7%	41.3%	78.9%	38.2%	35.2%	23.4%	
07-08	37.0%	61.6%	39.8%	79.9%	39.1%	<b>34.1%</b>	28.0%	<b>1 Mark</b>
08-09	47.5%	74.8%	61.1%	86.9%	58.7%	56.6%	45.5%	
09-10	58.0%	76.1%	57.1%	91.3%	<b>55.2%</b>	<b>50.5%</b>	49.1%	<b>1 Mark</b>
10-11	68.5%	79.3%	<u>64.6%</u>	90.7%	<u>61.3%</u>	<u>59.8%</u>	44.3%	
State Average 2-11; 2010-11	67.3%	<b>58.4%</b>	<b>49.5%</b>	<b>70.1%</b>	<b>49.0%</b>	<b>48.7%</b>	<b>36.1%</b>	
11-12	79.0%							

**ELA**

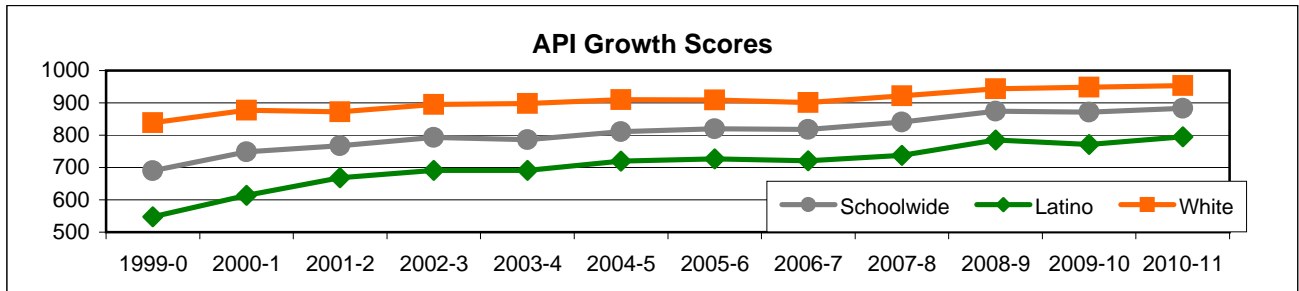


**MATH**



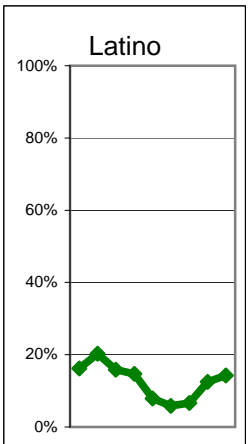
### Exceed State Academic Performance Index (API) Growth Goals

	Schoolwide			Latino			White		
	Base	Growth/ Goal Met	STATE API (2-6)	Base	Growth/ Goal Met	STATE API (2-6)	Base	Growth/ Goal Met	STATE API (2-6)
2003-4	794	786 Not Met		694	691 Not Met		896	898 Met	
2004-5	783	811 Met		691	720 Met		889	910 Met	
2005-6	811	820 Met	751	720	727 Met	687	910	909 Met	838
2006-7	819	818 Met	761	725	721 Not Met	702	907	901 Met	840
2007-8	827	841 Met	776	734	738 Not Met	722	901	922 Met	850
2008-9	833	874 Met	790	732	785 Met	738	919	944 Met	862
2009-10	870	871 Met	800	780	771 Not Met	752	943	949 Met	868
2008-9	871	883 Met	808	771	795 Met	763	949	953 Met	873



### Increase Participation Across Demographic Spectrum in Advanced Courses

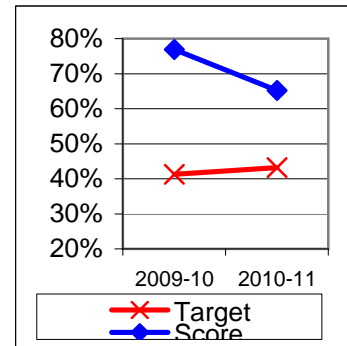
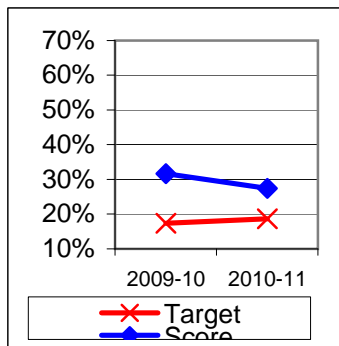
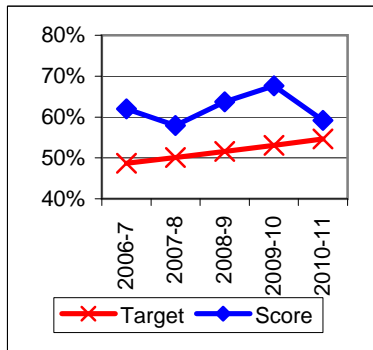
GATE (percent of all GATE students, Aeries 12-2010)	Latino		White		All Others	
	Number	Percent	Number	Percent	Number	Percent
2003-4	11	16.2%	54	79.4%	3	4.4%
2004-5	16	20.3%	61	77.2%	2	2.5%
2005-6	10	15.9%	53	84.1%	0	0.0%
2006-7	10	14.7%	56	82.4%	2	2.9%
2007-8	6	7.9%	67	88.2%	3	3.9%
2008-9	4	5.9%	60	88.2%	4	5.9%
2009-10	4	6.7%	52	86.7%	4	6.7%
<b>Note: In 2010 ethnicity/race definitions changed</b>					Non-Latino	
2010-11	8	12.5%			56	87.5%
2011-12	9	14.3%			54	85.7%



## Progress on English Learners Gaining One Proficiency Level Annually and Attaining English Language Proficiency

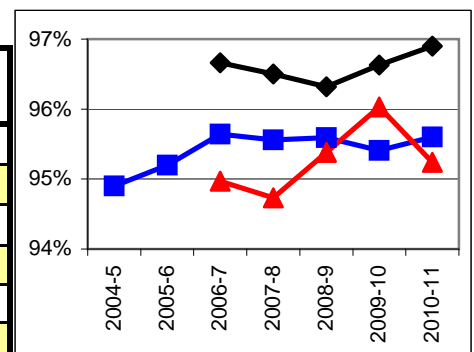
Taken from DataQuest	AMAO 1 Gained one Level on CELDT		AMAO 2 Gained English Proficiency			
	Target	Score	Target	Score	Target	Score
2003-4	51.0%		30.0%			
2004-5	51.5%	53.5%	30.7%	26.5%		
2005-6	52.0%	65.2%	31.4%	46.5%		
2006-7	48.7%	62.0%	27.2%	47.8%	New Norms	
2007-8	50.1%	57.9%	28.9%	48.0%		
2008-9	51.6%	63.7%	30.6%	46.9%		
			Less than 5 years cohort		Greater than 5 years cohort	
2009-10	53.1%	67.6%	17.4%	31.7%	41.3%	76.9%
2010-11	54.6%	59.2%	18.7%	27.4%	43.2%	65.2%

AMAO 1                      AMAO 2 < 5 years                      AMAO 2 > 5 years



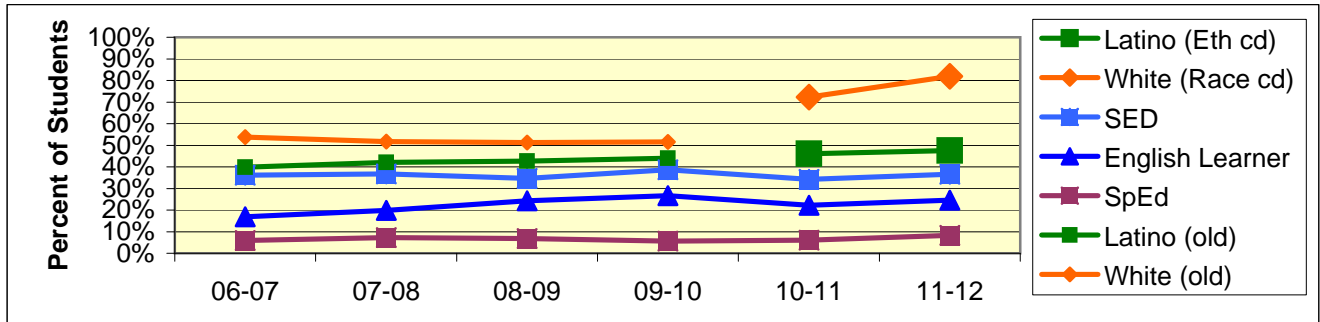
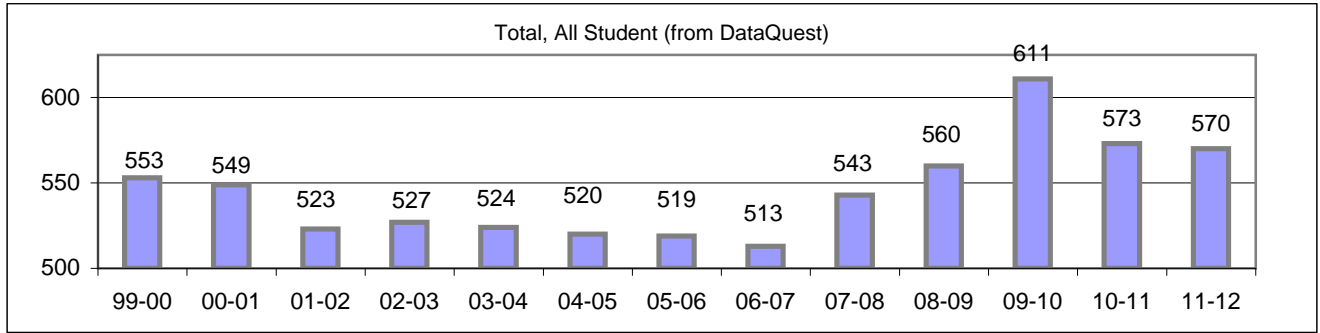
## Increase Efforts to Enhance Revenue

Attendance (Percent over year) (Attendance Office)	Lowest Month	Whole Year	District
2004-5			94.9%
2005-6			95.2%
2006-7	95.0%	96.7%	95.6%
2007-8	94.7%	96.5%	95.6%
2008-9	95.4%	96.3%	95.6%
2009-10	96.0%	96.6%	95.4%
2010-11	95.2%	96.9%	95.6%



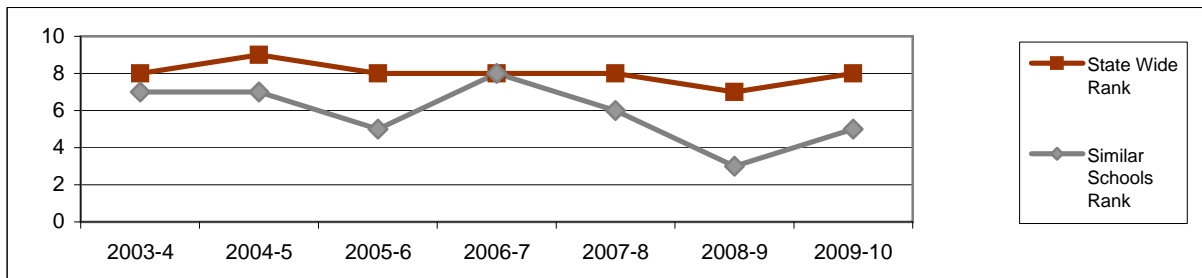
## Board Focus Goals: Roosevelt Elementary (30) - Sept. 2011

Demographics (K-6, Sept 7, 2011, Aeries)	Total	Female	Male	Latino (Eth cd)	White (Race cd)	SED	English Learner	SpEd
Number	570	285	285	271	467	209	140	47
Percent of Total		50.0%	50.0%	47.5%	81.9%	36.7%	24.6%	8.2%



### Achieve a State Similar School Ranking of 8 or Higher (scale = 1-10)

	State Wide Rank	Similar Schools Rank	Similar Schools Latino	Similar Schools White	Similar Schools SED	Similar Schools EL	Similar Schools Disab
2003-4	8	7	4	10	3	na	na
2004-5	9	7	4	10	5	na	na
2005-6	8	5	4	9	4	na	na
2006-7	8	8	4	10	4	na	na
2007-8	8	6	4	10	4	na	na
2008-9	7	3					
2009-10	8	5					



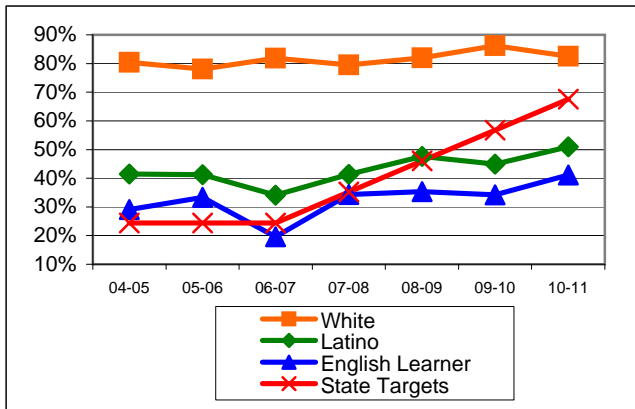
Roosevelt Continued

**Exceed Federal Adequate Yearly Progress (AYP) Accountability Goals** (Blue = Not enough students, Bold/underline/italic = Made by adjustment, Red = Did not pass

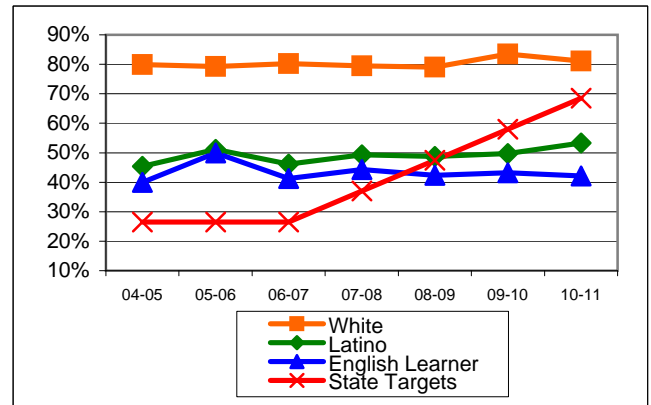
English Language Arts (ELA): Percent Proficient or Higher	State Targets	Schoolwide	Latino	White	Socio-Econ Disadv	English Learner	Stud with Disab	
04-05	24.4%	65.0%	41.5%	80.4%	42.1%	29.1%	20.7%	
05-06	24.4%	60.7%	41.2%	78.1%	36.7%	33.3%	25.9%	
06-07	24.4%	60.3%	34.1%	81.9%	28.3%	19.6%	14.8%	
07-08	35.2%	61.1%	41.4%	79.5%	42.1%	<u>34.3%</u>	35.5%	
08-09	46.0%	65.2%	47.6%	82.0%	<u>45.6%</u>	<b>35.3%</b>	37.5%	1 Mark
09-10	56.8%	66.8%	<b>44.9%</b>	86.2%	<b>42.8%</b>	<b>34.2%</b>	25.6%	2 Mark
10-11	67.6%	68.7%	<u>50.9%</u>	82.5%	<u>47.1%</u>	<u>41.1%</u>	42.5%	PI Y1
State Average 2-11; 2010-11	67.0%	<b>56.2%</b>	<b>44.7%</b>	<b>72.3%</b>	<b>44.0%</b>	<b>38.7%</b>	<b>34.3%</b>	
11-12	78.4%							PI Y2

Math: Percent Proficient or Higher	State Targets	Schoolwide	Latino	White	Socio-Econ Disadv	English Learner	Stud with Disab	
04-05	26.5%	66.4%	45.4%	79.9%	47.9%	40.0%	27.6%	
05-06	26.5%	66.7%	51.1%	79.2%	45.3%	50.0%	25.9%	
06-07	26.5%	65.7%	46.1%	80.2%	40.2%	41.3%	25.9%	
07-08	37.0%	64.9%	49.3%	79.5%	47.9%	44.3%	51.6%	
08-09	47.5%	64.7%	48.8%	79.0%	48.3%	<b>42.4%</b>	37.5%	1 Mark
09-10	58.0%	67.7%	<b>49.7%</b>	83.5%	<b>46.1%</b>	<b>43.2%</b>	44.7%	2 Mark
10-11	68.5%	69.0%	<u>53.3%</u>	81.1%	<u>51.3%</u>	<b>42.1%</b>	35.0%	PI Y1
State Average 2-11; 2010-11	67.3%	<b>58.4%</b>	<b>49.5%</b>	<b>70.1%</b>	<b>49.0%</b>	<b>48.7%</b>	<b>36.1%</b>	
11-12	79.0%							PI Y2

ELA



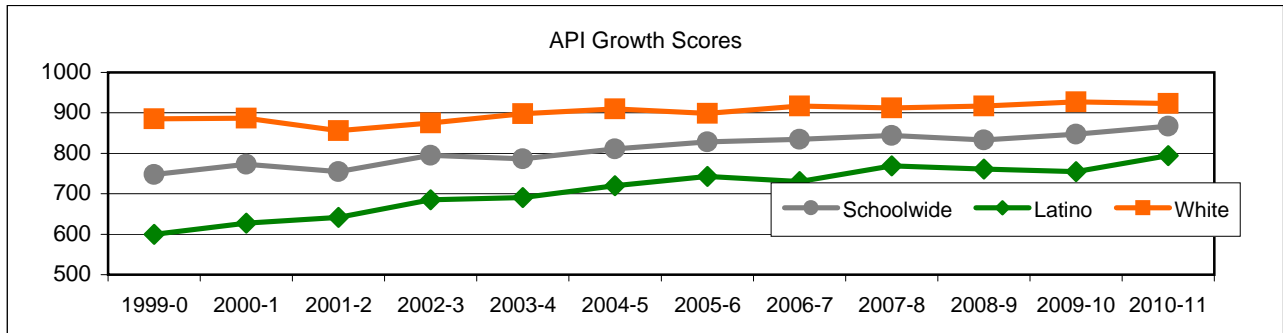
MATH



Roosevelt Continued

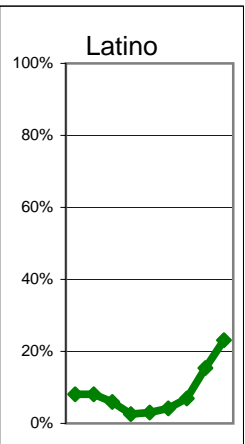
### Exceed State Academic Performance Index (API) Growth Goals

	Schoolwide			Latino			White		
	Base	Growth/Goal Met	STATE API (2-6)	Base	Growth/Goal Met	STATE API (2-6)	Base	Growth/Goal Met	STATE API (2-6)
2003-4	794	786 Not Met		694	691 Not Met		896	898 Met	
2004-5	783	811 Met		691	720 Met		889	910 Met	
2005-6	811	8828 Met	751	720	743 Met	687	910	899 Met	838
2006-7	819	835 Met	761	725	730 Not Met	702	907	917 Met	840
2007-8	846	844 Met	776	750	769 Met	722	920	912 Met	850
2008-9	837	833 Met	790	761	740 Not Met	738	910	917 Met	862
2009-10	833	847 Met	800	741	755 Met	752	917	927 Met	868
2008-9	847	867 Met	808	755	794 Met	763	927	923 Met	873



### Increase Participation Across Demographic Spectrum in Advanced Courses

GATE (percent of all GATE students, Aeries 12-2010)	Latino		White		All Others	
	Number	Percent	Number	Percent	Number	Percent
2003-4	6	8.1%	63	85.1%	5	6.8%
2004-5	5	8.1%	54	87.1%	3	4.8%
2005-6	3	6.0%	43	86.0%	4	8.0%
2006-7	1	2.6%	36	92.3%	2	5.1%
2007-8	1	3.0%	31	93.9%	1	3.0%
2008-9	1	4.2%	22	91.7%	1	4.2%
2009-10	2	6.9%	26	89.7%	1	3.4%
<b>Note: In 2010 ethnicity/race definitions changed</b>					Non-Latino	
2010-11	4	15.4%			22	84.6%
2011-12	6	23.1%			20	76.9%



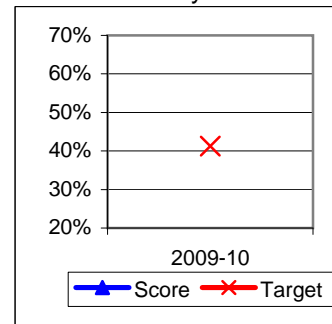
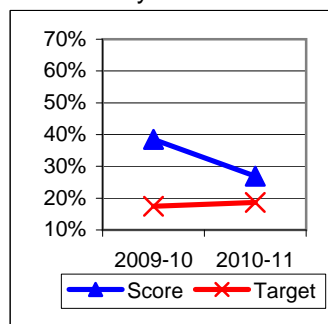
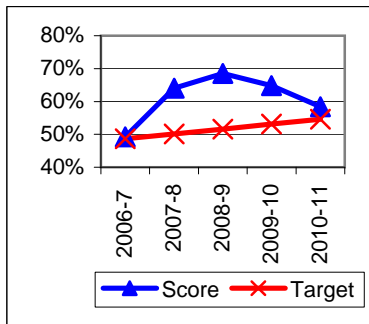
## Progress on English Learners Gaining One Proficiency Level Annually and Attaining English Language Proficiency

Taken from DataQuest	AMAO 1 Gained one Level on CELDT		AMAO 2 Gained English Proficiency			
	Target	Score	Target	Score	Target	Score
2003-4	51.0%		30.0%			
2004-5	51.5%	83.6%	30.7%	59.3%		
2005-6	52.0%	55.1%	31.4%			
2006-7	48.7%	49.2%	27.2%	32.3%	New Norms	
2007-8	50.1%	64.0%	28.9%	52.0%		
2008-9	51.6%	68.5%	30.6%	57.4%		
			Less than 5 years cohort		Greater than 5 years cohort	
2009-10	53.1%	64.8%	17.4%	38.5%	41.3%	
2010-11	54.6%	58.4%	18.7%	26.9%	43.2%	

AMAO 1

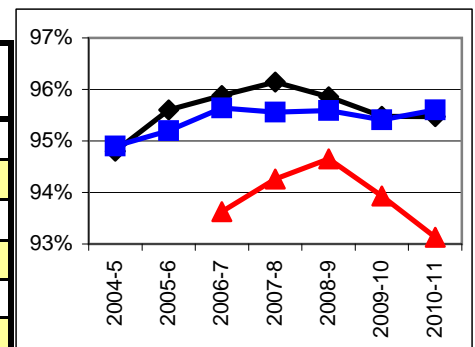
AMAO 2 <  
5 years

AMAO 2 >  
5 years



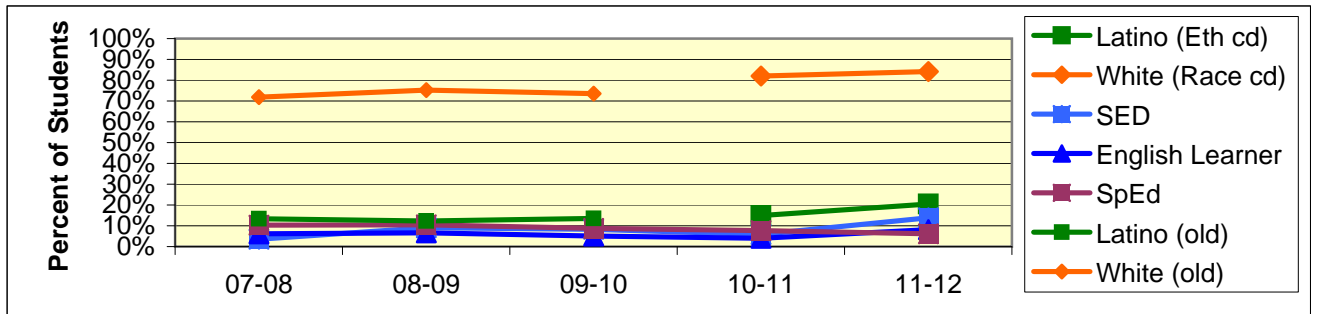
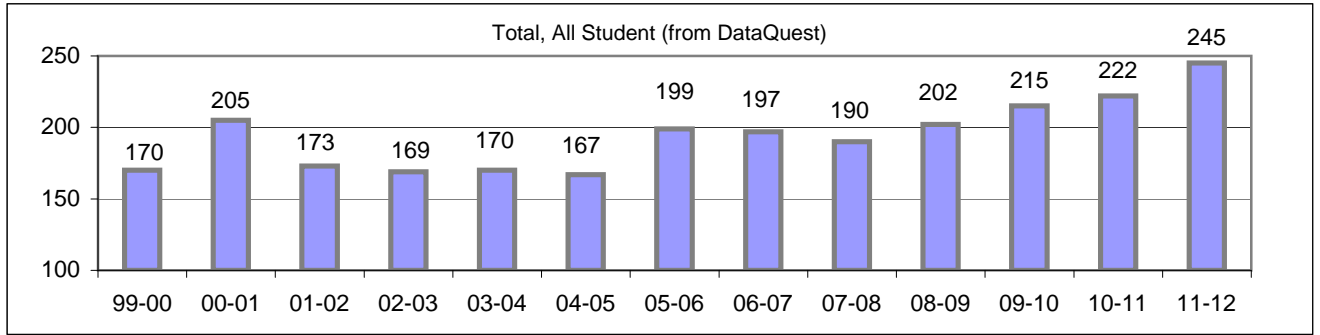
## Increase Efforts to Enhance Revenue

Attendance (Percent over year) (Attendance Office)	Lowest Month	Whole Year	District
2004-5		94.8%	94.9%
2005-6		95.6%	95.2%
2006-7	93.6%	95.9%	95.6%
2007-8	94.3%	96.1%	95.6%
2008-9	94.7%	95.9%	95.6%
2009-10	93.9%	95.5%	95.4%
2010-11	93.1%	95.5%	95.6%



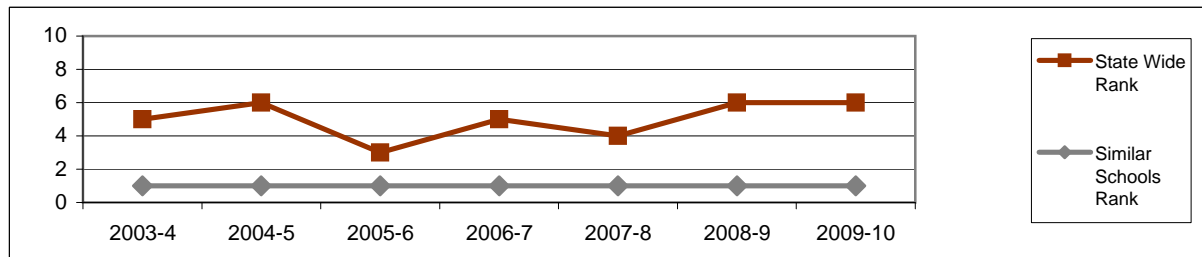
## Board Focus Goals: S B Charter (33) - Sept. 2011

Demographics (K-6, Sept 7, 2011, Aeries)	Total	Female	Male	Latino (Eth cd)	White (Race cd)	SED	English Learner	SpEd
Number	245	116	129	50	206	34	20	15
Percent of Total		47.3%	52.7%	20.4%	84.1%	13.9%	8.2%	6.1%



### Achieve a State Similar School Ranking of 8 or Higher (scale = 1-10)

	State Wide Rank	Similar Schools Rank	Similar Schools Latino	Similar Schools White	Similar Schools SED	Similar Schools EL	Similar Schools Disab
2003-4	5	1	na	1	na	na	na
2004-5	6	1	na	1	na	na	na
2005-6	3	1	na	1	na	na	na
2006-7	5	1	na	1	na	na	na
2007-8	4	1	na	1	na	na	na
2008-9	6	1					
2009-10	6	1					

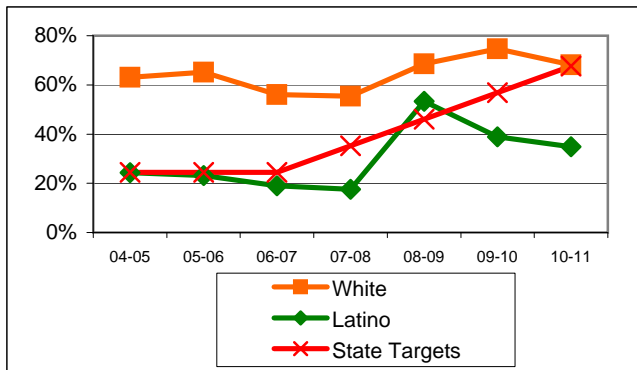


**Exceed Federal Adequate Yearly Progress (AYP) Accountability Goals** (Blue = Not enough students, Bold/underline/italic = Made by adjustment, Red = Did not pass

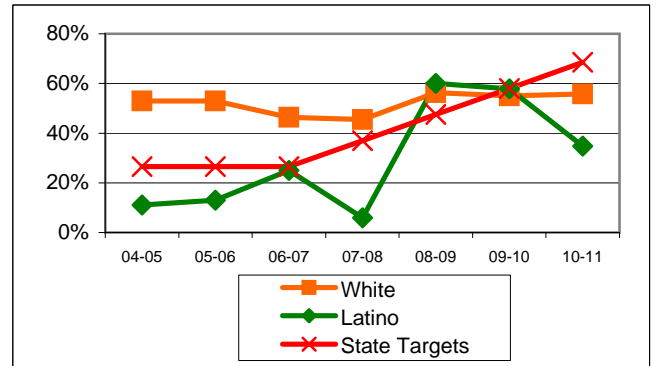
English Language Arts (ELA): Percent Proficient or Higher	State Targets	Schoolwide	Latino	White	Socio-Econ Disadv	English Learner	Stud with Disab	
04-05	24.4%	53.1%	24.3%	63.1%	30.4%		11.8%	
05-06	24.4%	51.9%	23.1%	65.2%	25.0%		7.1%	
06-07	24.4%	50.4%	19.0%	56.0%	18.8%		27.3%	
07-08	35.2%	52.0%	17.6%	55.4%			37.5%	
08-09	46.0%	65.5%	53.3%	68.6%	56.3%		50.0%	
09-10	56.8%	67.6%	38.9%	74.7%	53.8%	54.5%	50.0%	
10-11	67.6%	<b>62.1%</b>	34.8%	68.1%	63.6%	54.5%	47.1%	<b>1 Mark</b>
State Average 2-11; 2010-11	67.0%	<b>56.2%</b>	<b>44.7%</b>	<b>72.3%</b>	<b>44.0%</b>	<b>38.7%</b>	<b>34.3%</b>	
11-12	78.4%							

Math: Percent Proficient or Higher	State Targets	Schoolwide	Latino	White	Socio-Econ Disadv	English Learner	Stud with Disab	
04-05	26.5%	40.4%	11.1%	52.9%	18.2%		14.3%	
05-06	26.5%	42.3%	13.0%	52.9%	12.5%		13.3%	
06-07	26.5%	42.4%	25.0%	46.4%	35.3%		30.8%	
07-08	37.0%	40.5%	5.9%	45.5%			25.0%	
08-09	47.5%	58.3%	60.0%	56.3%	62.5%		21.4%	
09-10	58.0%	54.9%	57.9%	<b>55.0%</b>	61.5%	63.6%	27.8%	<b>1 Mark</b>
10-11	68.5%	<b>54.0%</b>	34.8%	<b>55.8%</b>	36.4%	36.4%	29.4%	<b>2 Mark</b>
State Average 2-11; 2010-11	67.3%	<b>58.4%</b>	<b>49.5%</b>	<b>70.1%</b>	<b>49.0%</b>	<b>48.7%</b>	<b>36.1%</b>	
11-12	79.0%							

ELA

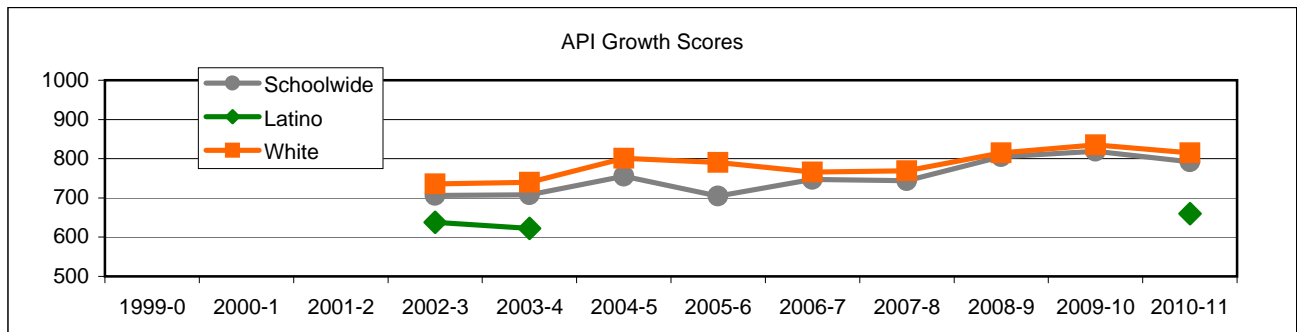


MATH



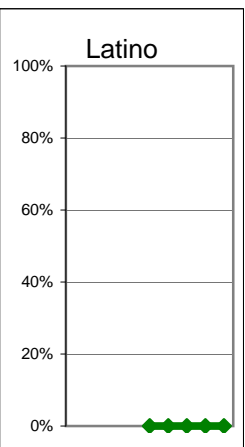
### Exceed State Academic Performance Index (API) Growth Goals

	Schoolwide			Latino			White		
	Base	Growth/ Goal Met	STATE API (2-6)	Base	Growth/ Goal Met	STATE API (2-6)	Base	Growth/ Goal Met	STATE API (2-6)
2003-4	686	708 Met		614	622 Met		713	740 Met	
2004-5	706	755 Met					740	801 Met	
2005-6	755	705 NotMet	751			687	801	790 NotMet	838
2006-7	703	747 Met	761			702	788	766 NotMet	840
2007-8	763	744 NotMet	776			722	784	769 NotMet	850
2008-9	739	805 Met	790			738	768	815 Met	862
2009-10	805	819 Met	800			752	813	835 Met	868
2008-9	819	792 NotMet	808	734	660 NotMet	763	835	815 Met	873



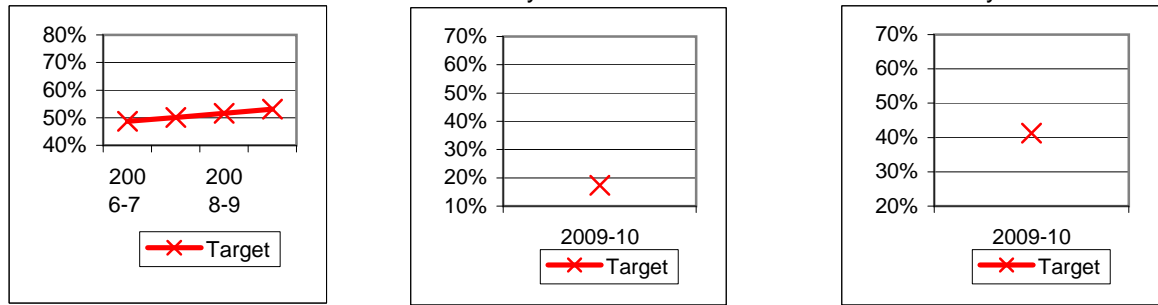
### Increase Participation Across Demographic Spectrum in Advanced Courses

GATE (percent of all GATE students, Aeries 12-2010)	Latino		White		All Others	
	Number	Percent	Number	Percent	Number	Percent
2003-4						
2004-5						
2005-6						
2006-7						
2007-8	0	0.0%	1	100.0%	0	0.0%
2008-9	0	0.0%	1	100.0%	0	0.0%
2009-10	0	0.0%	1	100.0%	0	0.0%
<b>Note: In 2010 ethnicity/race definitions changed</b>					Non-Latino	
2010-11	0	0.0%			5	100.0%
2011-12	0	0.0%			5	100.0%



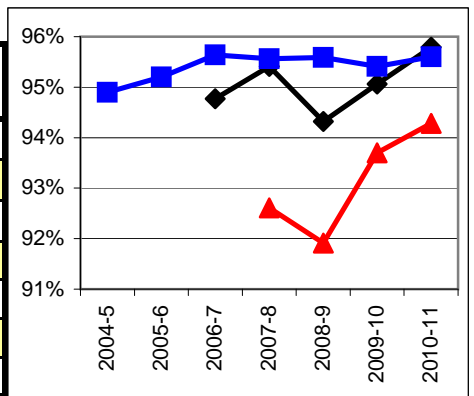
## Progress on English Learners Gaining One Proficiency Level Annually and Attaining English Language Proficiency

Taken from DataQuest	AMAO 1 Gained one Level on CELDT		AMAO 2 Gained English Proficiency			
	Target	Score	Target	Score	Target	Score
2003-4	51.0%		30.0%			
2004-5	51.5%		30.7%			
2005-6	52.0%		31.4%			
2006-7	48.7%		27.2%		New Norms	
2007-8	50.1%		28.9%			
2008-9	51.6%		30.6%			
			Less than 5 years cohort		Greater than 5 years cohort	
2009-10	53.1%		17.4%		41.3%	
2010-11	54.6%		18.7%		43.2%	



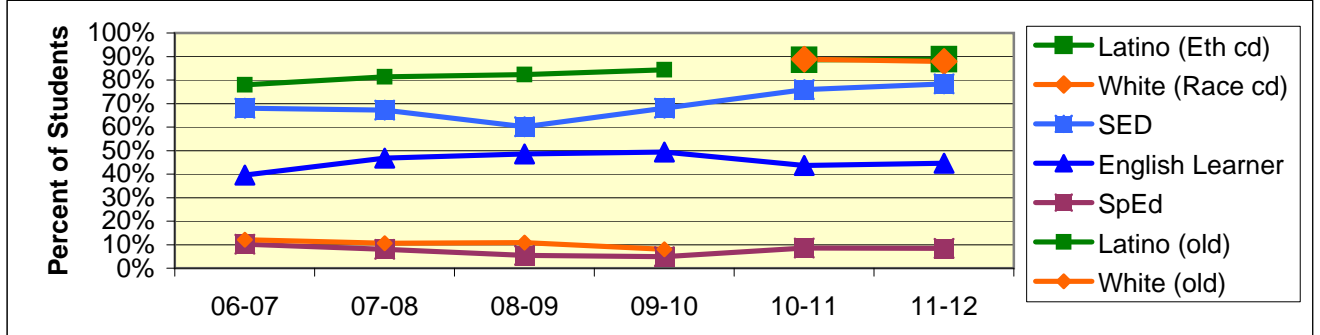
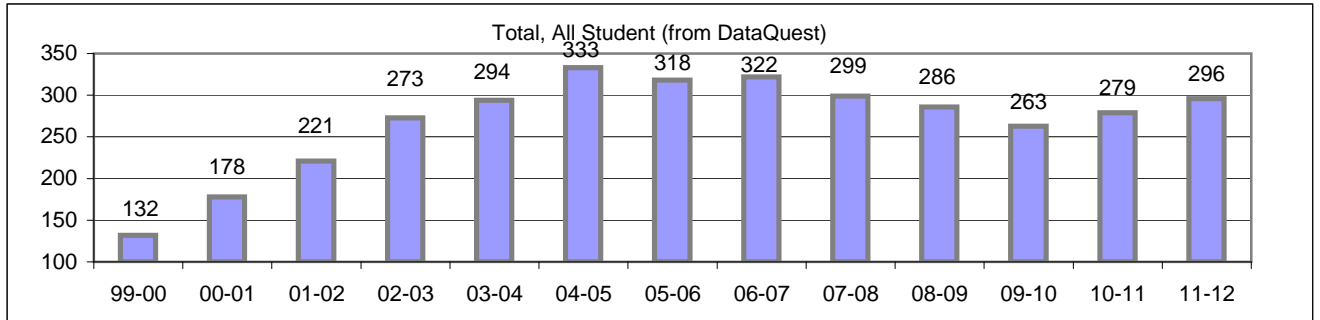
## Increase Efforts to Enhance Revenue

Attendance (Percent over year) (Attendance Office)	Lowest Month	Whole Year	District
2004-5			94.9%
2005-6			95.2%
2006-7		94.8%	95.6%
2007-8	92.6%	95.4%	95.6%
2008-9	91.9%	94.3%	95.6%
2009-10	93.7%	95.1%	95.4%
2010-11	94.3%	95.8%	95.6%



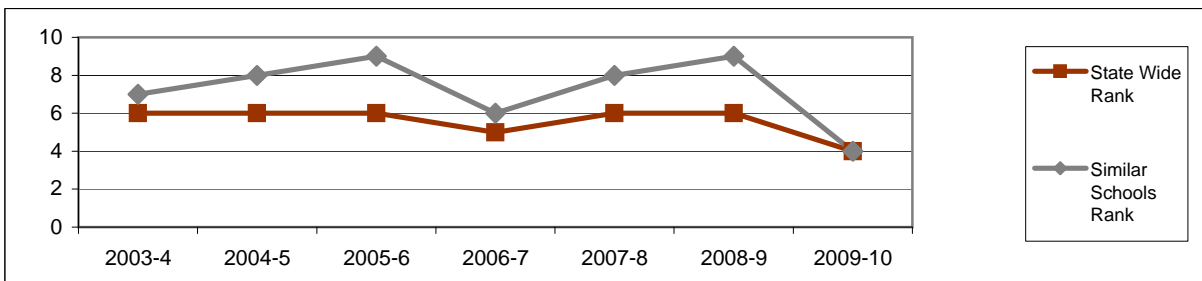
## Board Focus Goals: S B Community Academy (26) - Sept. 2011

Demographics (K-6, Sept 7, 2011, Aeries)	Total	Female	Male	Latino (Eth cd)	White (Race cd)	SED	English Learner	SpEd
Number	296	159	137	263	260	232	132	25
Percent of Total		53.7%	46.3%	88.9%	87.8%	78.4%	44.6%	8.4%



### Achieve a State Similar School Ranking of 8 or Higher (scale = 1-10)

	State Wide Rank	Similar Schools Rank	Similar Schools Latino	Similar Schools White	Similar Schools SED	Similar Schools EL	Similar Schools Disab
2003-4	6	7	8	na	8	na	na
2004-5	6	8	9	na	8	6	na
2005-6	6	9	10	na	8	9	na
2006-7	5	6	6	na	5	1	na
2007-8	6	8	8	na	9	6	na
2008-9	6	9					
2009-10	4	4					



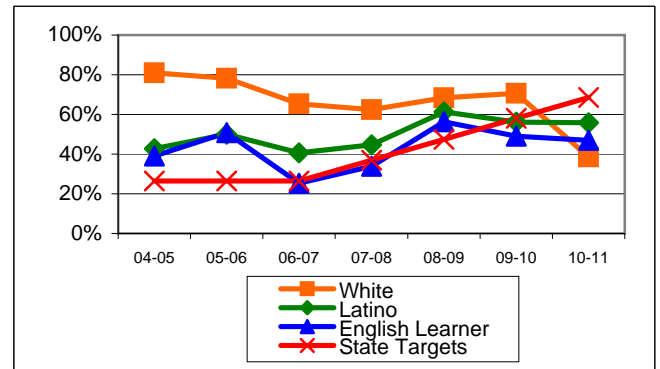
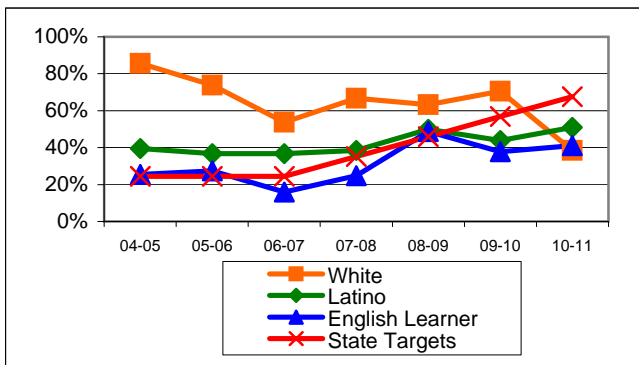
**Exceed Federal Adequate Yearly Progress (AYP) Accountability Goals** (Blue = Not enough students, Bold/underline/italic = Made by adjustment, Red = Did not pass

English Language Arts (ELA): Percent Proficient or Higher	State Targets	Schoolwide	Latino	White	Socio-Econ Disadv	English Learner	Stud with Disab	
04-05	24.4%	46.8%	39.5%	85.7%	41.6%	25.4%	5.9%	
05-06	24.4%	44.8%	36.7%	73.9%	33.3%	27.4%	11.1%	
06-07	24.4%	40.9%	36.8%	53.8%	32.9%	16.0%	18.2%	1 Mark
07-08	35.2%	44.1%	38.4%	66.7%	36.8%	<u>24.7%</u>	37.9%	
08-09	46.0%	52.3%	50.0%	63.2%	47.9%	48.8%	43.5%	
09-10	56.8%	47.4%	43.8%	70.6%	38.8%	37.8%	33.3%	1 Mark
10-11	67.6%	<u>51.1%</u>	<u>50.9%</u>	38.5%	48.1%	<u>41.0%</u>	24.1%	
State Average 2-11; 2010-11	67.0%	56.2%	44.7%	72.3%	44.0%	38.7%	34.3%	
11-12	78.4%							PI Y1

Math: Percent Proficient or Higher	State Targets	Schoolwide	Latino	White	Socio-Econ Disadv	English Learner	Stud with Disab	
04-05	26.5%	49.3%	42.8%	81.0%	43.2%	39.0%	11.8%	
05-06	26.5%	55.5%	50.0%	78.3%	47.7%	50.8%	29.6%	
06-07	26.5%	45.3%	40.7%	65.4%	36.5%	<u>25.3%</u>	22.7%	
07-08	37.0%	48.5%	44.7%	62.5%	43.8%	<u>33.8%</u>	30.0%	
08-09	47.5%	61.5%	61.3%	68.4%	56.4%	56.3%	39.1%	
09-10	58.0%	<u>56.8%</u>	<u>56.2%</u>	70.6%	48.8%	49.0%	47.6%	1 Mark
10-11	68.5%	55.9%	55.8%	38.5%	<u>53.5%</u>	47.0%	41.4%	2 Mark
State Average 2-11; 2010-11	67.3%	58.4%	49.5%	70.1%	49.0%	48.7%	36.1%	
11-12	79.0%							PI Y1

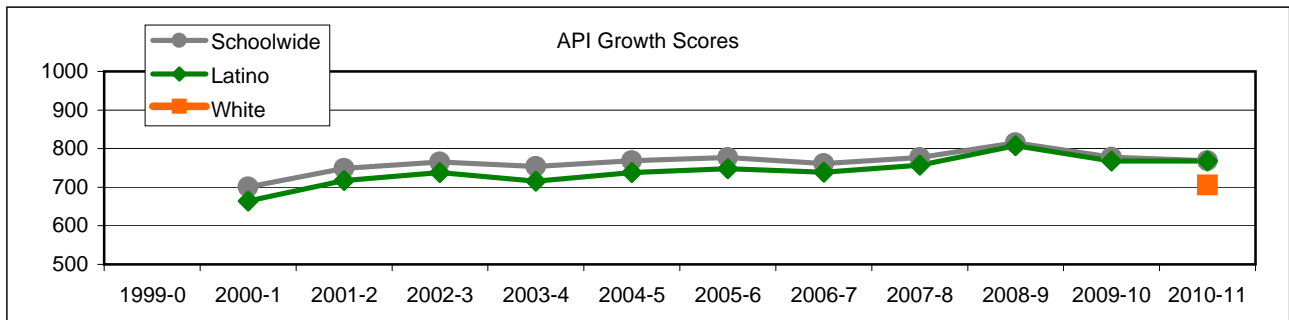
ELA

MATH



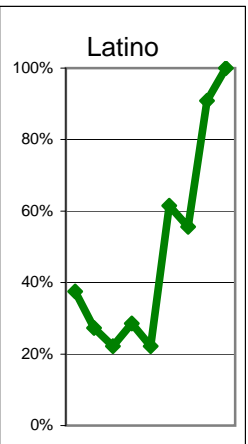
### Exceed State Academic Performance Index (API) Growth Goals

	Schoolwide			Latino			White		
	Base	Growth/ Goal Met	STATE API (2-6)	Base	Growth/ Goal Met	STATE API (2-6)	Base	Growth/ Goal Met	STATE API (2-6)
2003-4	766	754 NotMet		736	716 NotMet				
2004-5	749	769 Met		714	738 Met				
2005-6	769	777 Met	751	738	748 Met	687			838
2006-7	779	761 NotMet	761	752	739 NotMet	702			840
2007-8	761	777 Met	776	740	757 Met	722			850
2008-9	778	815 Met	790	759	808 Met	738			862
2009-10	812	778 NotMet	800	805	768 NotMet	752			868
2010-11	778	769 NotMet	808	768	768 NotMet	763	854	706 NotMet	873



### Increase Participation Across Demographic Spectrum in Advanced Courses

GATE (percent of all GATE students, Aeries 12-2010)	Latino		White		All Others	
	Number	Percent	Number	Percent	Number	Percent
2003-4	6	37.5%	8	50.0%	2	12.5%
2004-5	3	27.3%	6	54.5%	2	18.2%
2005-6	2	22.2%	4	44.4%	3	33.3%
2006-7	2	28.6%	3	42.9%	2	28.6%
2007-8	2	22.2%	5	55.6%	2	22.2%
2008-9	8	61.5%	3	23.1%	2	15.4%
2009-10	5	55.6%	3	33.3%	1	11.1%
<b>Note: In 2010 ethnicity/race definitions changed</b>					Non-Latino	
2010-11	10	90.9%			1	9.1%
2011-12	8	100.0%			0	0.0%



## Progress on English Learners Gaining One Proficiency Level Annually and Attaining English Language Proficiency

Taken from DataQuest	AMAO 1 Gained one Level on CELDT		AMAO 2 Gained English Proficiency			
	Target	Score	Target	Score	Target	Score
2003-4	51.0%		30.0%			
2004-5	51.5%	52.0%	30.7%	29.5%		
2005-6	52.0%	58.5%	31.4%	38.2%		
2006-7	48.7%	60.7%	27.2%	49.0%	New Norms	
2007-8	50.1%	54.0%	28.9%	31.0%		
2008-9	51.6%	78.2%	30.6%	64.8%		
			Less than 5 years cohort		Greater than 5 years cohort	
2009-10	53.1%	56.6%	17.4%	31.7%	41.3%	56.7%
2010-11	54.6%	65.0%	18.7%	32.1%	43.2%	

AMAO 1

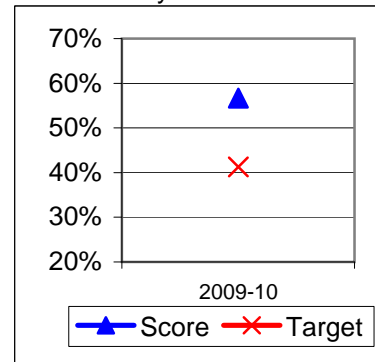
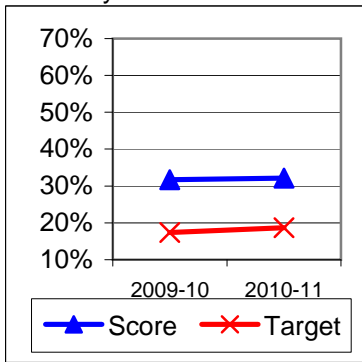
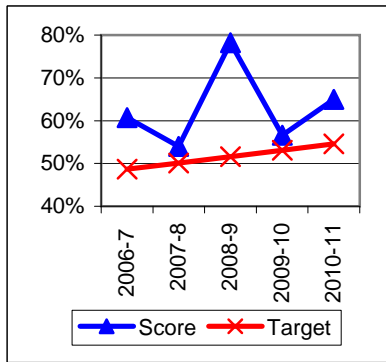
AMAO 2

<

AMAO 2

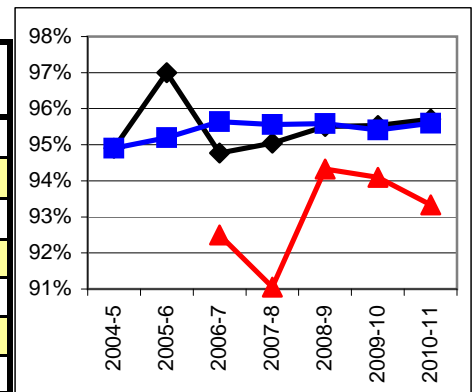
5 years

> 5 years



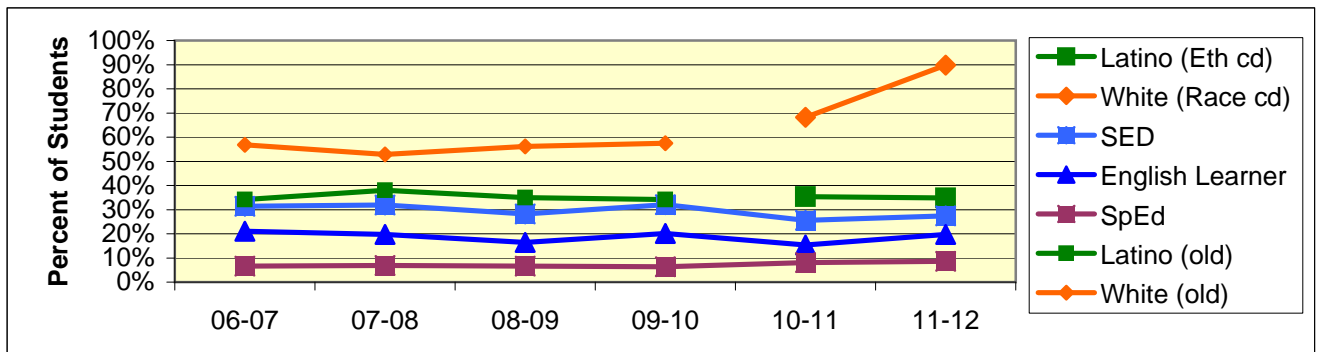
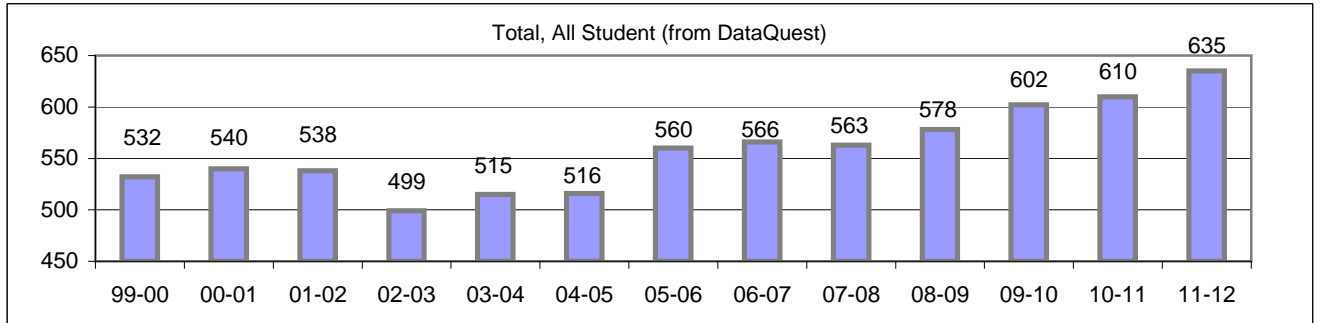
## Increase Efforts to Enhance Revenue

Attendance (Percent over year) (Attendance Office)	Lowest Month	Whole Year	District
2004-5		94.9%	94.9%
2005-6		97.0%	95.2%
2006-7	92.5%	94.8%	95.6%
2007-8	91.1%	95.1%	95.6%
2008-9	94.3%	95.5%	95.6%
2009-10	94.1%	95.5%	95.4%
2010-11	93.3%	95.7%	95.6%



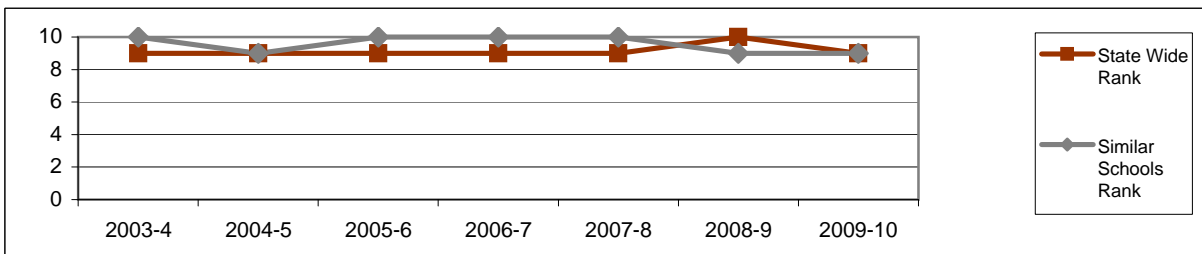
## Board Focus Goals: Washington Elementary (31) - Sept. 2011

Demographics (K-6, Sept 7, 2011, Aeries)	Total	Female	Male	Latino (Eth cd)	White (Race cd)	SED	English Learner	SpEd
Number	635	301	334	221	570	174	125	55
Percent of Total		47.4%	52.6%	34.8%	89.8%	27.4%	19.7%	8.7%



### Achieve a State Similar School Ranking of 8 or Higher (scale = 1-10)

	State Wide Rank	Similar Schools Rank	Similar Schools Latino	Similar Schools White	Similar Schools SED	Similar Schools EL	Similar Schools Disab
2003-4	9	10	4	10	6	na	na
2004-5	9	9	3	10	6	3	na
2005-6	9	10	5	10	5	3	na
2006-7	9	10	4	10	5	3	na
2007-8	9	10	5	10	6	4	na
2008-9	10	9					
2009-10	9	9					



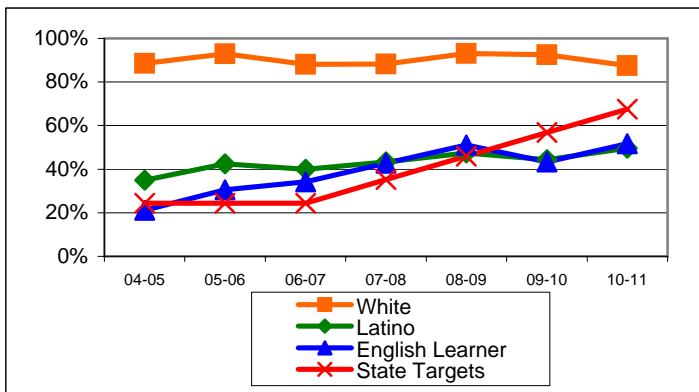
Washington Continued

**Exceed Federal Adequate Yearly Progress (AYP) Accountability Goals** (Blue = Not enough students, Bold/underline/italic = Made by adjustment, Red = Did not pass

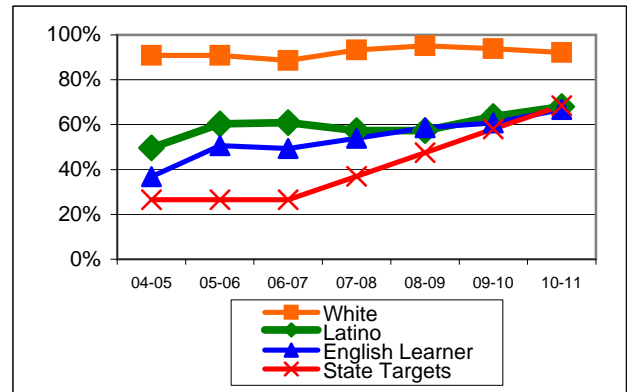
English Language Arts (ELA): Percent Proficient or Higher	State Targets	Schoolwide	Latino	White	Socio-Econ Disadv	English Learner	Stud with Disab	
04-05	24.4%	65.3%	35.0%	88.6%	35.3%	<u>21.1%</u>	18.2%	
05-06	24.4%	70.0%	42.5%	92.9%	39.3%	30.6%	22.7%	
06-07	24.4%	69.2%	39.9%	88.1%	39.7%	34.2%	22.7%	
07-08	35.2%	70.7%	43.3%	88.2%	41.7%	42.7%	33.3%	
08-09	46.0%	77.0%	47.5%	93.1%	46.2%	51.1%	36.4%	
09-10	56.8%	76.3%	<b>44.3%</b>	92.5%	<b>45.3%</b>	<b>43.3%</b>	34.4%	<b>1 Mark</b>
10-11	67.6%	75.5%	<u>49.7%</u>	87.5%	<b>43.0%</b>	<u>51.7%</u>	35.4%	<b>2 Mark</b>
State Average 2-11; 2010-11	67.0%	<b>56.2%</b>	<b>44.7%</b>	<b>72.3%</b>	<b>44.0%</b>	<b>38.7%</b>	<b>34.3%</b>	
11-12	78.4%							

Math: Percent Proficient or Higher	State Targets	Schoolwide	Latino	White	Socio-Econ Disadv	English Learner	Stud with Disab	
04-05	26.5%	73.5%	49.7%	90.9%	51.1%	36.8%	22.7%	
05-06	26.5%	76.8%	60.3%	90.8%	56.4%	50.6%	36.4%	
06-07	26.5%	76.9%	60.9%	88.6%	57.3%	49.4%	31.8%	
07-08	37.0%	79.1%	57.3%	93.3%	56.1%	53.9%	40.9%	
08-09	47.5%	82.4%	57.4%	95.2%	57.7%	58.7%	51.5%	
09-10	58.0%	83.5%	63.6%	93.8%	61.7%	60.8%	53.1%	
10-11	68.5%	83.6%	<u>68.0%</u>	92.1%	<u>62.0%</u>	<u>66.7%</u>	50.0%	
State Average 2-11; 2010-11	67.3%	<b>58.4%</b>	<b>49.5%</b>	<b>70.1%</b>	<b>49.0%</b>	<b>48.7%</b>	<b>36.1%</b>	
11-12	79.0%							

ELA

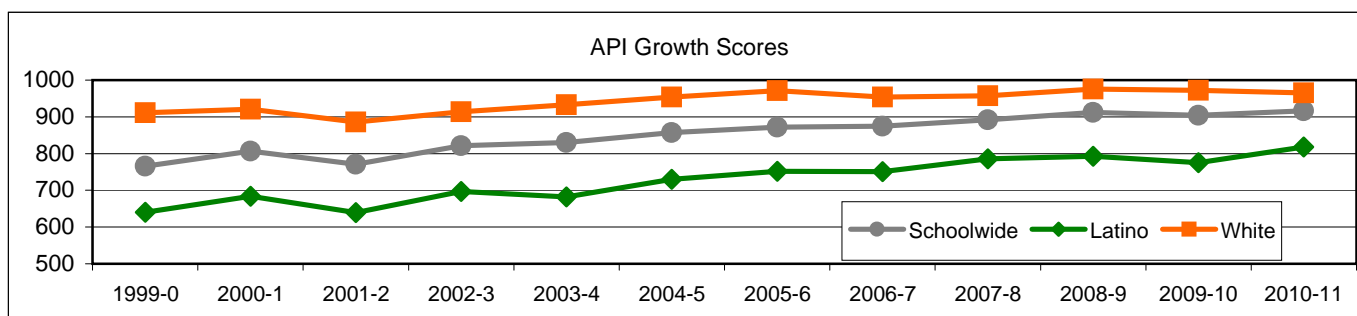


MATH



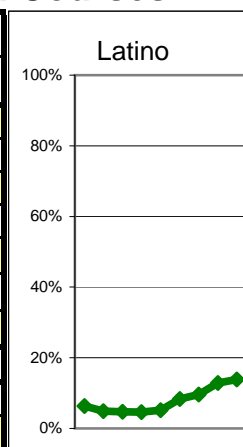
### Exceed State Academic Performance Index (API) Growth Goals

	Schoolwide			Latino			White		
	Base	Growth/ Goal Met	STATE API (2-6)	Base	Growth/ Goal Met	STATE API (2-6)	Base	Growth/ Goal Met	STATE API (2-6)
2003-4	812	830 Met		680	682 Met		915	933 Met	
2004-5	826	857 Met		681	730 Met		929	954 Met	
2005-6	857	872 Met	751	730	752 Met	687	954	971 Met	838
2006-7	873	875 Met	761	757	751 NotMet	702	969	954 Met	840
2007-8	884	892 Met	776	764	786 Met	722	958	957 Met	850
2008-9	886	912 Met	790	784	793 Met	738	953	976 Met	862
2009-10	909	904 Met	800	792	775 NotMet	752	973	972 Met	868
2008-9	904	916 Met	808	775	818 Met	763	972	965 Met	873



### Increase Participation Across Demographic Spectrum in Advanced Courses

GATE (percent of all GATE students, Aeries 12-2010)	Latino		White		All Others	
	Number	Percent	Number	Percent	Number	Percent
2003-4	6	6.3%	75	78.9%	14	14.7%
2004-5	4	4.9%	65	79.3%	13	15.9%
2005-6	4	4.7%	67	78.8%	14	16.5%
2006-7	4	4.7%	67	77.9%	15	17.4%
2007-8	4	5.1%	60	76.9%	14	17.9%
2008-9	9	8.3%	77	71.3%	22	20.4%
2009-10	9	9.6%	74	78.7%	11	11.7%
<b>Note: In 2010 ethnicity/race definitions changed</b>					Non-Latino	
2010-11	15	12.8%			102	87.2%
2011-12	17	13.8%			106	86.2%



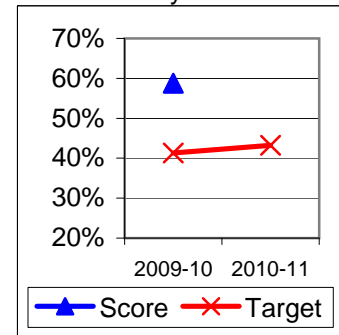
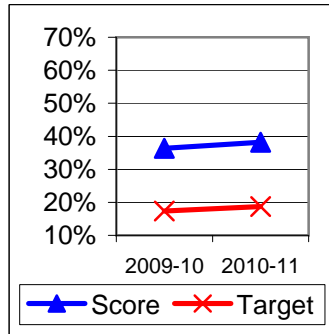
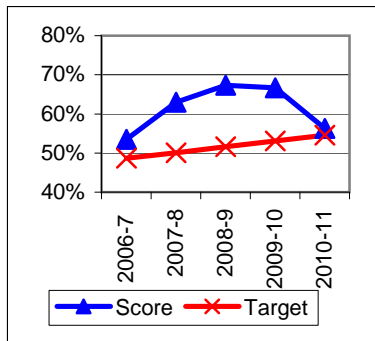
## Progress on English Learners Gaining One Proficiency Level Annually and Attaining English Language Proficiency

Taken from DataQuest	AMAO 1 Gained one Level on CELDT		AMAO 2 Gained English Proficiency			
	Target	Score	Target	Score	Target	Score
2003-4	51.0%		30.0%			
2004-5	51.5%	66.0%	30.7%	55.1%		
2005-6	52.0%	56.1%	31.4%	32.5%		
2006-7	48.7%	53.5%	27.2%	39.7%	New Norms	
2007-8	50.1%	63.0%	28.9%	50.0%		
2008-9	51.6%	67.3%	30.6%	47.2%		
			Less than 5 years cohort		Greater than 5 years cohort	
2009-10	53.1%	66.7%	17.4%	36.4%	41.3%	58.8%
2010-11	54.6%	56.3%	18.7%	38.2%	43.2%	

AMAO 1

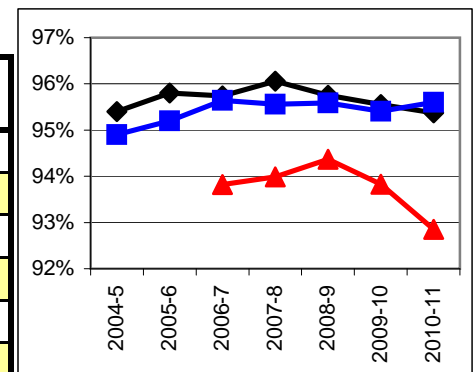
AMAO 2 <  
5 years

AMAO 2 >  
5 years



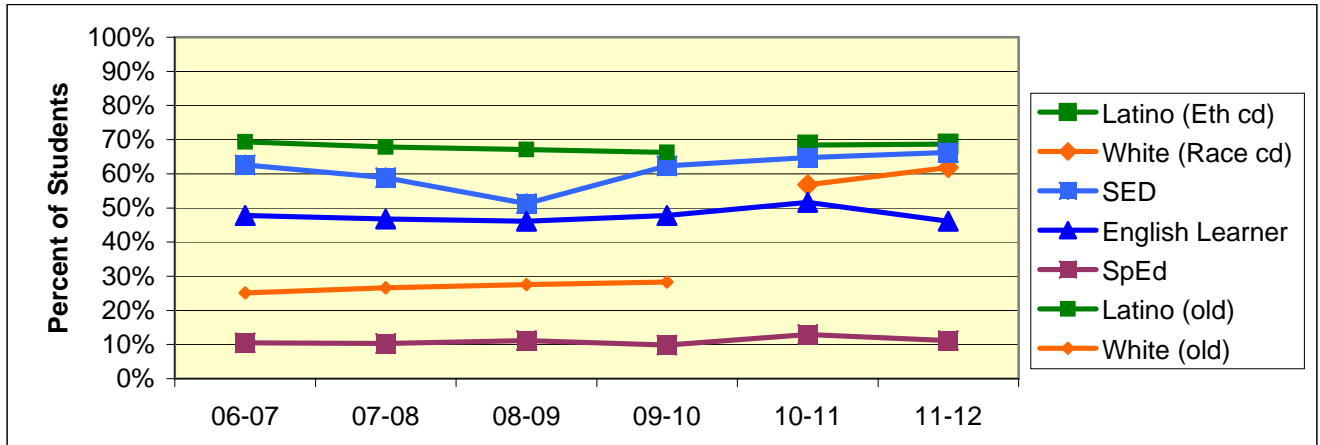
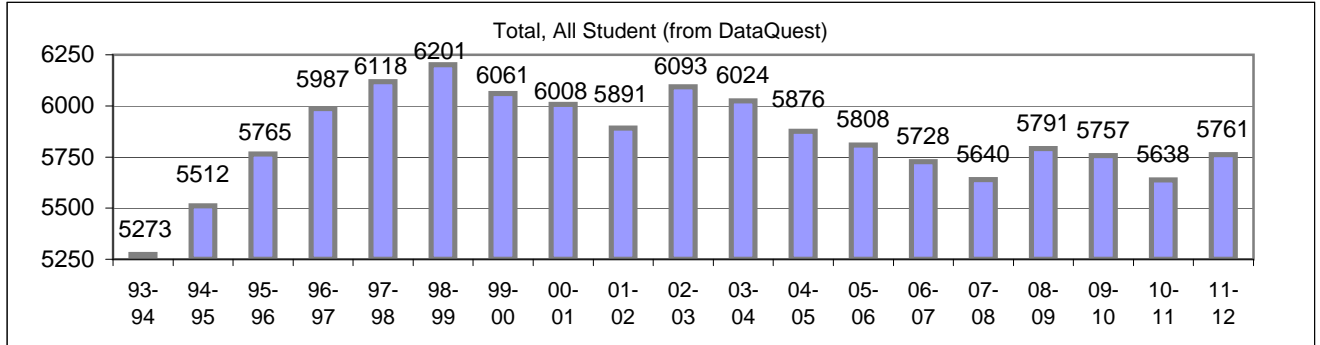
## Increase Efforts to Enhance Revenue

Attendance (Percent over year) (Attendance Office)	Lowest Month	Whole Year	District
2004-5		95.4%	94.9%
2005-6		95.8%	95.2%
2006-7	93.8%	95.7%	95.6%
2007-8	94.0%	96.1%	95.6%
2008-9	94.4%	95.8%	95.6%
2009-10	93.8%	95.6%	95.4%
2010-11	92.9%	95.4%	95.6%



## Board Focus Goals: Elementary District - Sept. 2011

Demographics (K-6, Sept. 7 2011, Aeries)	Total	Female	Male	Latino (Eth cd)	White (Race cd)	SED	English Learner	SpEd
Number	5761	2818	2943	3958	3564	3819	2654	645
Percent of Total		48.9%	51.1%	68.7%	61.9%	66.3%	46.1%	11.2%



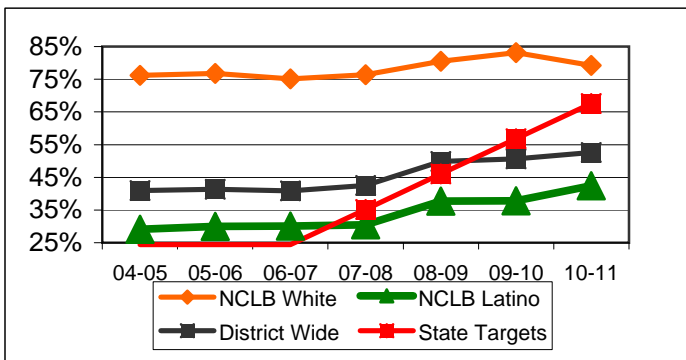
Elementary District Continued

**Exceed Federal Adequate Yearly Progress (AYP) Accountability Goals** (Blue = Not enough students, Bold/underline/italic = Made by adjustment, Red = Did not pass

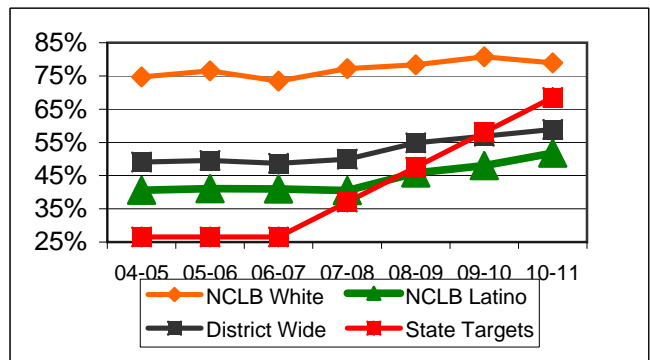
English Language Arts (ELA): Percent Proficient or Higher	State Targets	District Wide	Latino	White	Socio-Econ Disadv	English Learner	Stud with Disab	
04-05	24.4%	41.0%	29.1%	76.2%	27.7%	18.8%	10.1%	Mark 2
05-06	24.4%	41.3%	30.0%	76.8%	28.9%	22.3%	11.8%	PI Y1
06-07	24.4%	40.9%	30.1%	75.1%	29.0%	22.0%	13.6%	PI Y2
07-08	35.2%	42.5%	30.5%	76.4%	30.2%	23.7%	24.1%	PI Y3
08-09	46.0%	49.9%	<u>37.7%</u>	80.5%	<u>36.8%</u>	<u>32.6%</u>	<u>32.8%</u>	PI Y3
09-10	56.8%	50.6%	37.8%	83.1%	37.0%	33.5%	32.8%	PI Y3
10-11	67.6%	52.6%	42.4%	79.2%	40.3%	38.7%	35.4%	PI Y3
State Average 2-11; 2010-11	67.0%	56.2%	44.7%	72.3%	44.0%	38.7%	34.3%	
11-12	78.4%							PI Y3

Math: Percent Proficient or Higher	State Targets	District Wide	Latino	White	Socio-Econ Disadv	English Learner	Stud with Disab	
04-05	26.5%	49.1%	40.6%	74.7%	39.7%	36.3%	12.9%	Mark 2
05-06	26.5%	49.6%	41.1%	76.5%	40.1%	36.7%	18.5%	PI Y1
06-07	26.5%	48.7%	41.0%	73.4%	39.6%	35.2%	18.9%	PI Y2
07-08	37.0%	49.9%	40.5%	77.2%	40.9%	36.3%	29.8%	PI Y3
08-09	47.5%	54.9%	<u>45.8%</u>	78.4%	44.7%	<u>42.3%</u>	<u>38.5%</u>	PI Y3
09-10	58.0%	56.9%	48.0%	80.8%	46.5%	44.7%	41.2%	PI Y3
10-11	68.5%	58.9%	<u>51.8%</u>	78.9%	<u>50.8%</u>	<u>49.9%</u>	39.0%	PI Y3
State Average 2-11; 2010-11	67.3%	58.4%	49.5%	70.1%	49.0%	48.7%	36.1%	
11-12	79.0%							PI Y3

ELA

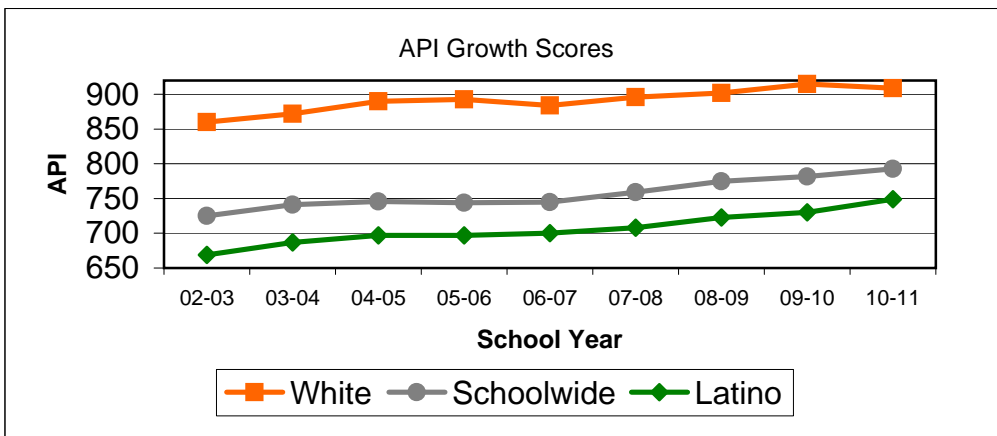


Math



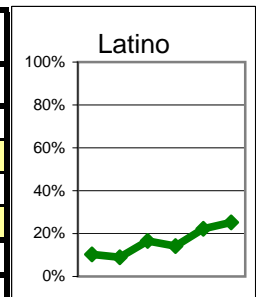
Elementary District Continued  
**Exceed State Academic Performance Index (API) Growth Goals**

Districts have no "Met" or "Not Met" status	Schoolwide			Latino			White		
	Base	Growth/Goal Met	STATE API (2-6)	Base	Growth/Goal Met	STATE API (2-6)	Base	Growth/Goal Met	STATE API (2-6)
2003-4	719	741		662	687		857	872	
2004-5	738	746		686	697		866	890	
2005-6	746	744	751	697	697	687	890	893	838
2006-7	744	745	761	697	700	702	891	884	840
2007-8	759	759	776	714	708	722	894	896	850
2008-9	755	775	790	707	723	738	892	902	862
2009-10	773	782	800	722	730	752	902	915	868
2010-11	782	793	808	731	749	763	915	909	873



**Increase Participation Across Demographic Spectrum in Advanced Courses**  
 (Percent of GATE students within GATE population)

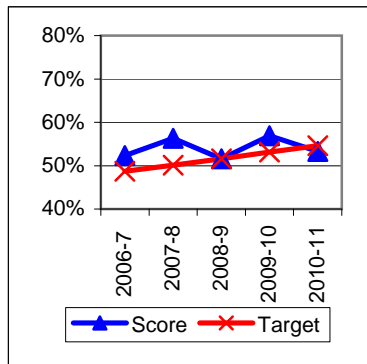
GATE (percent of all GATE students, Aeries 12-2010)	Latino		White		All Others	
	Number	Percent	Number	Percent	Number	Percent
2006-7	28	10.3%	211	77.9%	32	11.8%
2007-8	22	9.0%	197	80.4%	26	10.6%
2008-9	43	16.6%	192	74.1%	24	9.3%
2009-10	34	14.1%	187	77.6%	20	8.3%
<b>Note: In 2010 ethnicity/race definitions changed</b>					Non-Latino	
2010-11	58	22.2%			203	77.8%
2011-12	68	25.3%			201	74.7%



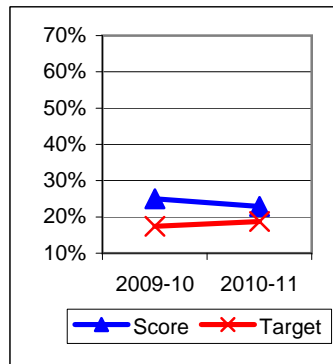
## Progress on English Learners Gaining One Proficiency Level Annually and Attaining English Language Proficiency

Taken from DataQuest	AMAO 1 Gained one Level on CELDT		AMAO 2 Gained English Proficiency			
	Target	Score	Target	Score	Target	Score
2003-4	51.0%	66.7%	30.0%	43.2%		
2004-5	51.5%	58.0%	30.7%	39.2%		
2005-6	52.0%	57.9%	31.4%	38.0%		
2006-7	48.7%	52.3%	27.2%	34.3%	New Norms	
2007-8	50.1%	56.3%	28.9%	37.8%		
2008-9	51.6%	51.6%	30.6%	42.4%		
			Less than 5 years cohort		Greater than 5 years cohort	
2009-10	53.1%	56.9%	17.4%	25.0%	41.3%	52.3%
2010-11	54.6%	53.3%	18.7%	22.9%	43.2%	57.7%

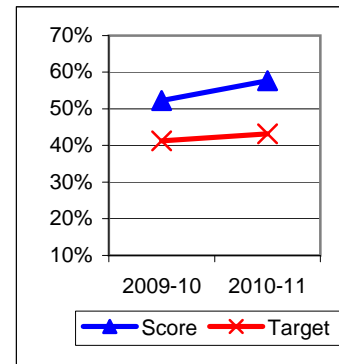
AMAO 1



AMAO 2 < 5 years



AMAO 2 > 5 years



## Increase Efforts to Enhance Revenue

Attendance (Percent over year) (Attendance Office)	Lowest Month	District
2004-5		94.9%
2005-6		95.2%
2006-7	94.0%	95.6%
2007-8	93.6%	95.6%
2008-9	94.8%	95.6%
2009-10	94.4%	95.4%
2010-11	93.9%	95.6%

