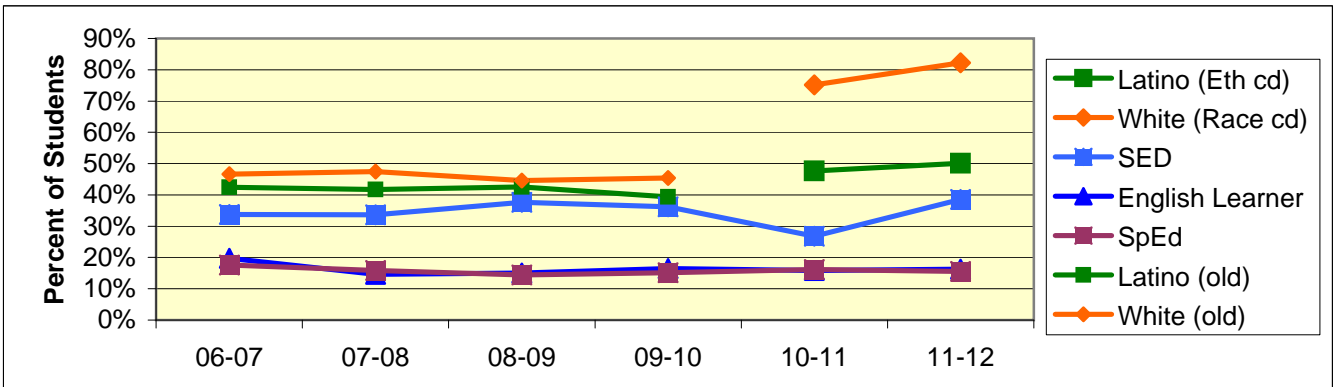
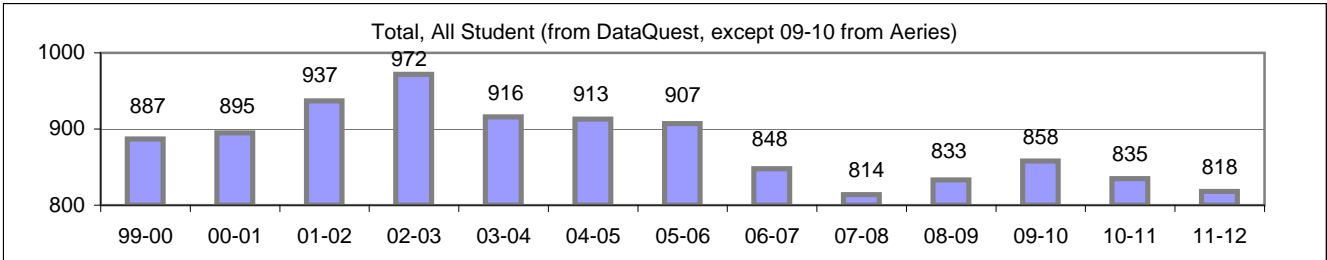


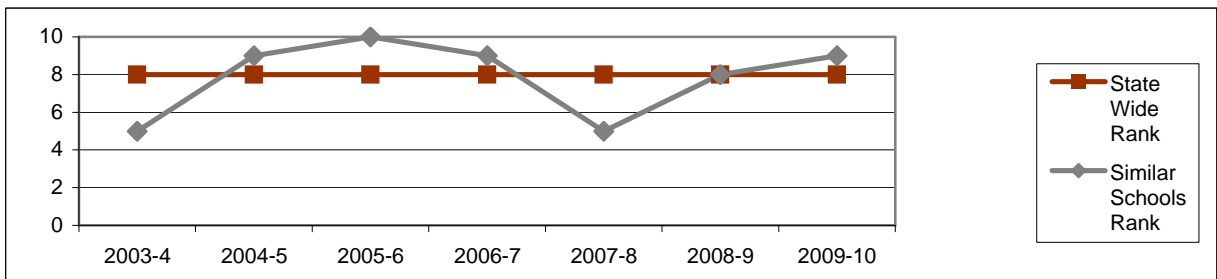
Board Focus Goals: Goleta Valley Junior High (6) - Sept. 2011

Demographics (7-8, Sept 7, 2011, Aeries)	Total	Female	Male	Latino (Eth cd)	White (Race cd)	SED	English Learner	SpEd
Number	818	416	402	410	673	315	133	127
Percent of Total		50.9%	49.1%	50.1%	82.3%	38.5%	16.3%	15.5%



Achieve a State Similar School Ranking of 8 or Higher (scale = 1-10)

	State Wide Rank	Similar Schools Rank	Similar Schools Latino	Similar Schools White	Similar Schools SED	Similar Schools EL	Similar Schools Disab
2003-4	8	5	2	10	1	na	na
2004-5	8	9	3	10	3	6	6
2005-6	8	10	4	10	3	8	9
2006-7	8	9	5	10	4	na	5
2007-8	8	5	3	10	2	7	3
2008-9	8	8					
2009-10	8	9					

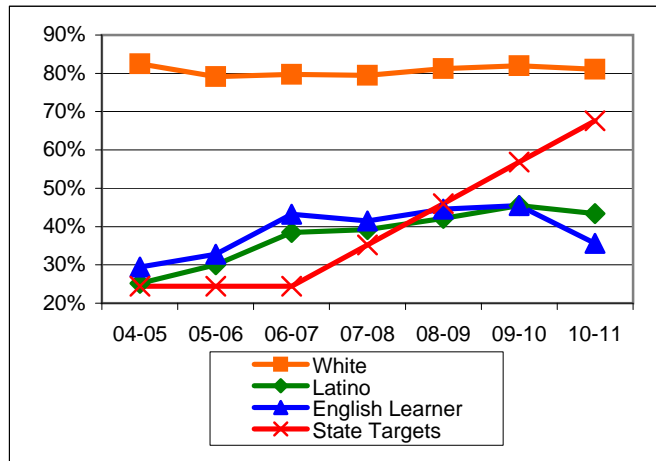


Exceed Federal Adequate Yearly Progress (AYP) Accountability Goals (Blue = Not enough students, Bold/underline/italic = Made by adjustment, Red = Did not pass

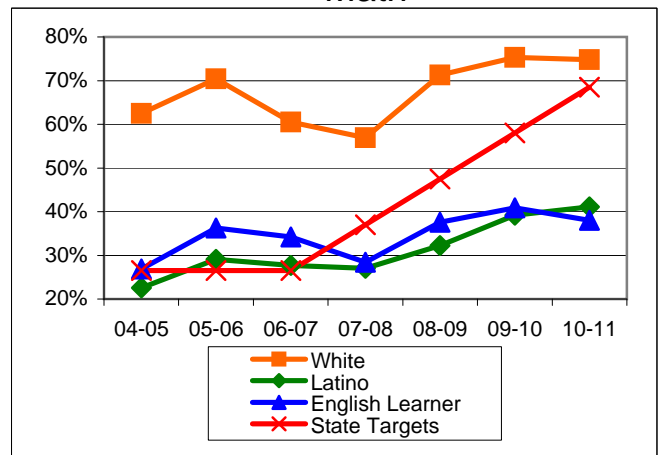
English Language Arts (ELA): Percent Proficient or Higher (based on CST exams)	State Targets	Schoolwide	Latino	White	Socio-Econ Disadv	English Learner	Stud with Disab	
04-05	24.4%	59.4%	25.2%	82.5%	25.0%	29.4%	<u>12.2%</u>	
05-06	24.4%	58.7%	30.0%	79.1%	26.6%	32.8%	<u>16.1%</u>	
06-07	24.4%	63.9%	38.5%	79.7%	34.4%	43.2%	19.8%	Mark 1
07-08	35.2%	62.6%	39.2%	79.5%	34.1%	41.5%	12.7%	Mark 2
08-09	46.0%	65.1%	42.1%	81.2%	41.9%	44.6%	29.6%	PI Y1
09-10	56.8%	65.7%	45.5%	82.0%	38.0%	45.5%	30.2%	PI Y2
10-11	67.6%	63.2%	43.4%	81.1%	35.7%	35.6%	24.3%	PI Y3
State Average 2-12, 2010-11		56.2%	44.7%	72.3%	44.0%	38.7%	34.3%	
11-12	78.4%							PI Y4

Math: Percent Proficient or Higher (Based on CST exams)	State Targets	Schoolwide	Latino	White	Socio-Econ Disadv	English Learner	Stud with Disab	
04-05	26.5%	47.4%	<u>22.6%</u>	62.5%	<u>21.6%</u>	26.9%	<u>9.1%</u>	
05-06	26.5%	54.9%	29.1%	70.4%	26.6%	36.3%	<u>19.8%</u>	
06-07	26.5%	49.0%	27.7%	60.5%	26.6%	34.2%	<u>10.8%</u>	
07-08	37.0%	45.5%	27.0%	56.9%	22.6%	28.4%	7.9%	
08-09	47.5%	55.7%	<u>32.2%</u>	71.3%	<u>30.1%</u>	<u>37.6%</u>	<u>24.3%</u>	PI Y1
09-10	58.0%	58.6%	<u>39.2%</u>	75.3%	31.3%	40.9%	23.4%	PI Y2
10-11	68.5%	59.3%	41.1%	74.8%	34.8%	38.0%	23.4%	PI Y3
State Average 2-12, 2010-11		58.4%	49.5%	70.1%	49.0%	48.7%	36.1%	
11-12	79.0%							PI Y4

ELA

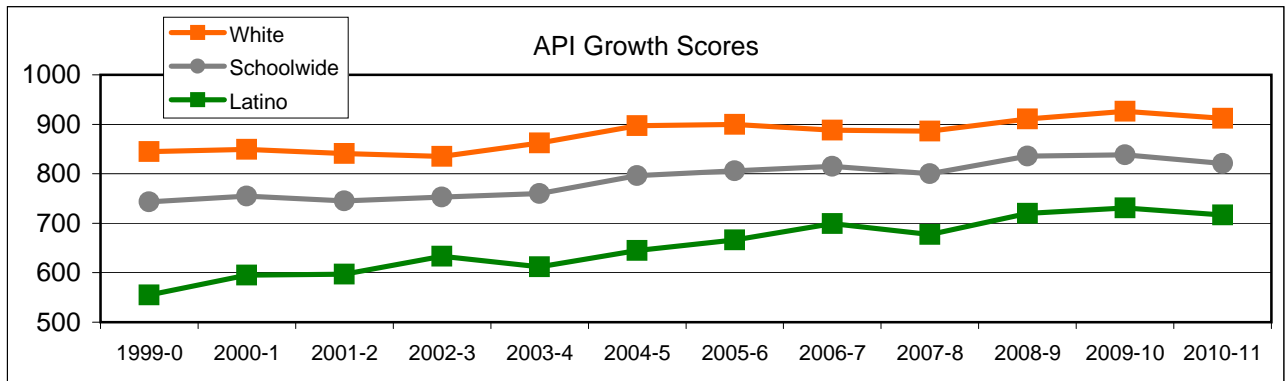


Math



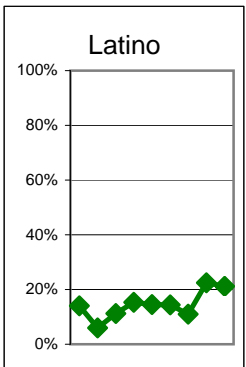
Goleta Valley Continued
Exceed State Academic Performance Index (API) Growth Goals

	Schoolwide			Latino			White		
	Base	Growth/ Goal Met	State API (7-8)	Base	Growth/ Goal Met	State API (7-8)	Base	Growth/ Goal Met	State API (7-8)
2003-4	753	760 Met		634	612 Not Met		838	862 Met	
2004-5	761	796 Met		616	645 Met		860	897 Met	
2005-6	796	806 Met	715	645	666 Met	642	897	900 Met	805
2006-7	810	815 Met	720	670	699 Met	651	903	888 Met	807
2007-8	815	800 Met	735	699	677 Not Met	669	888	886 Met	818
2008-9	817	836 Met	754	704	720 Met	690	888	911 Met	833
2009-10	824	838 Met	765	718	731 Met	706	909	926 Met	842
2010-11	838	821 Met	778	731	717 Not Met	723	926	912 Met	850



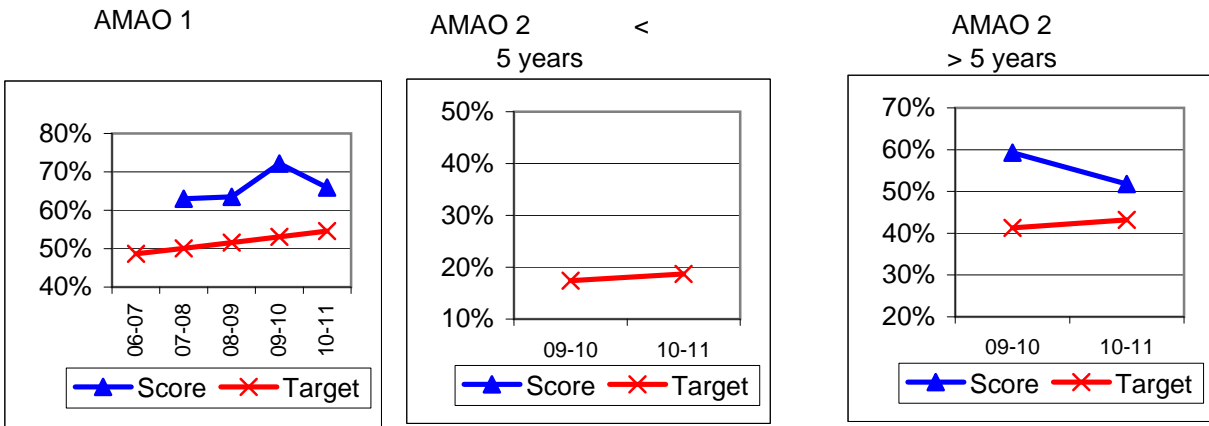
Increase Participation Across Demographic Spectrum in Advanced Courses

GATE (percent of all GATE students, Aeries 12-2010)	Latino		White		All Others	
	Number	Percent	Number	Percent	Number	Percent
2003-4	17	14.0%	83	68.6%	21	17.4%
2004-5	13	5.9%	167	75.9%	40	18.2%
2005-6	25	11.2%	155	69.5%	43	19.3%
2006-7	33	15.3%	150	69.8%	32	14.9%
2007-8	31	14.6%	148	69.5%	34	16.0%
2008-9	33	14.3%	151	65.7%	46	20.0%
Note: In 2010 ethnicity/race definitions changed					Non-Latino	
2009-10	14	10.9%			114	89.1%
2010-11	53	22.5%			183	77.5%
2011-12	52	21.2%			193	78.8%



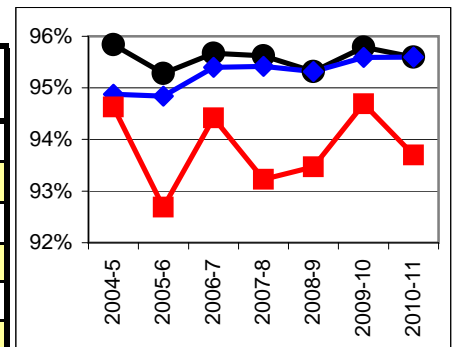
Progress on English Learners Gaining One Proficiency Level Annually and Attaining English Language Proficiency

Taken from DataQuest	AMAO 1 Gained one Level on CELDT		AMAO 2 English Proficiency		Gained	
	Target	Score	Target	Score	Target	Score
03-04	51.0%		30.0%			
04-05	51.5%	84.7%	30.7%	52.2%		
05-06	52.0%	84.3%	31.4%	68.4%		
06-07	48.7%		27.2%		New Norms	
07-08	50.1%	63.0%	28.9%	43.0%		
08-09	51.6%	63.5%	30.6%	34.5%		
			Less than 5 years cohort		Greater than 5 years cohort	
09-10	53.1%	72.2%	17.4%		41.3%	59.3%
10-11	54.6%	65.9%	18.7%		43.2%	51.8%



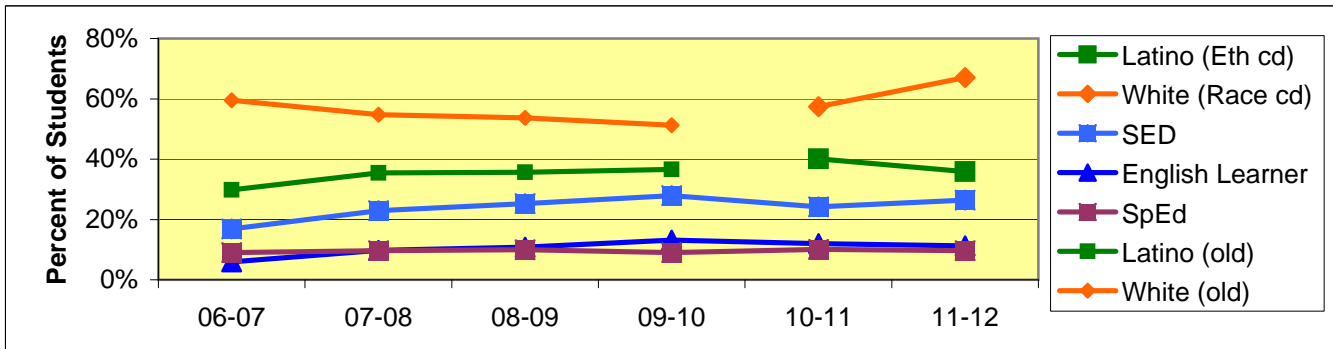
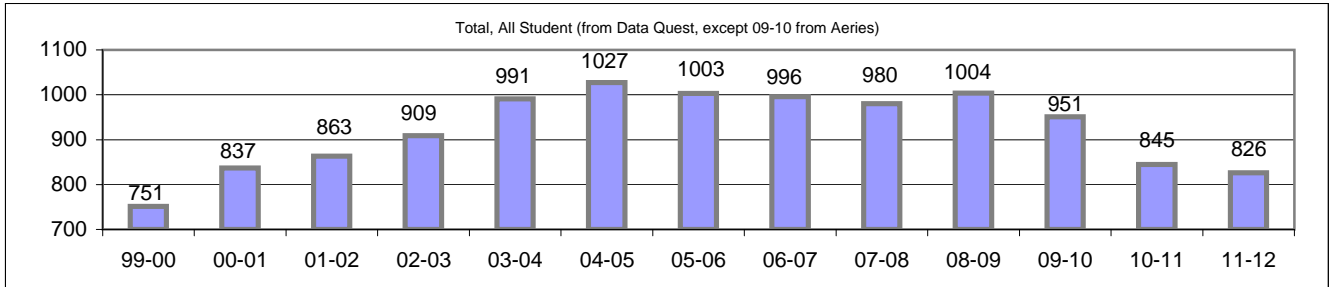
Increase Efforts to Enhance Revenue

Attendance (Percent over year) (Attendance Office)	Lowest Month	Whole Year	District (Jr.)
2004-5	94.6%	95.8%	94.9%
2005-6	92.7%	95.3%	94.8%
2006-7	94.4%	95.7%	95.4%
2007-8	93.2%	95.6%	95.4%
2008-9	93.5%	95.3%	95.3%
2009-10	94.7%	95.8%	95.6%
2010-11	93.7%	95.6%	95.6%



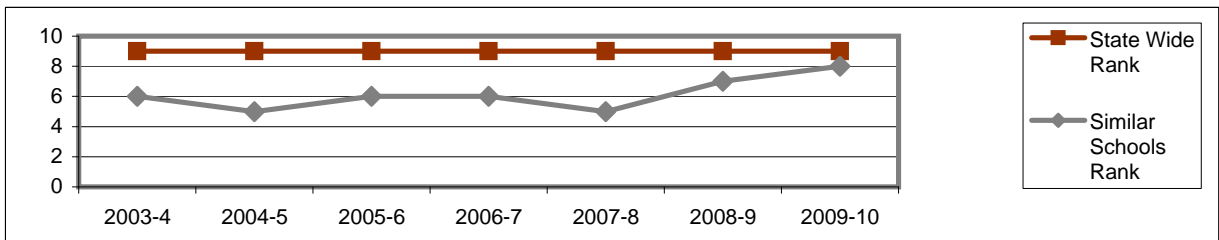
Board Focus Goals: La Colina Junior High School (1) - Sept. 2011

Demographics (7-8, Sept 7, 2011, Aeries)	Total	Female	Male	Latino (Eth cd)	White (Race cd)	SED	English Learner	SpEd
Number	826	404	422	296	554	218	93	80
Percent of Total		48.9%	51.1%	35.8%	67.1%	26.4%	11.3%	9.7%



Achieve a State Similar School Ranking of 8 or Higher (scale = 1-10)

	State Wide Rank	Similar Schools Rank	Similar Schools Latino	Similar Schools White	Similar Schools SED	Similar Schools EL	Similar Schools Disab
2003-4	9	6	8	na	6	na	na
2004-5	9	5	4	10	5	na	8
2005-6	9	6	4	9	6	7	9
2006-7	9	6	6	10	7	na	na
2007-8	9	5	7	10	5	na	na
2008-9	9	7					
2009-10	9	8					



Exceed Federal Adequate Yearly Progress (AYP) Accountability Goals (Blue = Not enough students, Bold/underline/italic = Made by adjustment, Red = Did not pass

English Language Arts (ELA): Percent Proficient or Higher (based on CST exams)	State Targets	Schoolwide	Latino	White	Socio-Econ Disadv	English Learner	Stud with Disab
04-05	24.4%	62.5%	35.1%	72.7%	33.1%	39.5%	25.9%
05-06	24.4%	68.6%	44.3%	78.4%	42.9%	42.8%	<u>17.6%</u>
06-07	24.4%	69.8%	47.2%	81.2%	43.6%	40.9%	21.5%
07-08	35.2%	65.7%	44.6%	78.7%	39.7%	<u>34.6%</u>	12.8%
08-09	46.0%	66.9%	46.1%	79.3%	38.5%	33.3%	18.1%
09-10	56.8%	75.0%	<u>54.4%</u>	88.2%	<u>50.4%</u>	<u>46.1%</u>	40.2%
10-11	67.6%	76.4%	<u>59.9%</u>	87.5%	<u>54.3%</u>	<u>52.0%</u>	42.0%
State Average 2-12, 2010-11		56.2%	44.7%	72.3%	44.0%	38.7%	34.3%
11-12	78.4%						

Mark 4

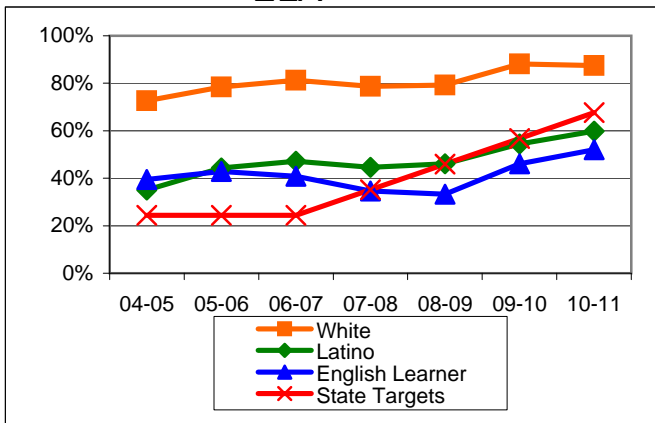
Math: Percent Proficient or Higher (Based on CST exams)	State Targets	Schoolwide	Latino	White	Socio-Econ Disadv	English Learner	Stud with Disab
04-05	26.5%	49.8%	<u>25.4%</u>	59.0%	<u>24.9%</u>	27.7%	<u>24.1%</u>
05-06	26.5%	54.4%	31.0%	63.3%	35.1%	34.3%	9.9%
06-07	26.5%	56.6%	33.2%	66.3%	30.4%	31.4%	15.2%
07-08	37.0%	55.7%	33.7%	67.9%	33.0%	23.4%	12.8%
08-09	47.5%	62.6%	<u>41.8%</u>	74.1%	<u>37.8%</u>	<u>34.9%</u>	17.0%
09-10	58.0%	64.4%	43.7%	76.9%	<u>43.4%</u>	<u>40.2%</u>	25.6%
10-11	68.5%	64.0%	42.4%	76.7%	36.4%	34.5%	24.1%
State Average 2-12, 2010-11		58.4%	49.5%	70.1%	49.0%	48.7%	36.1%
11-12	79.0%						

Mark 4

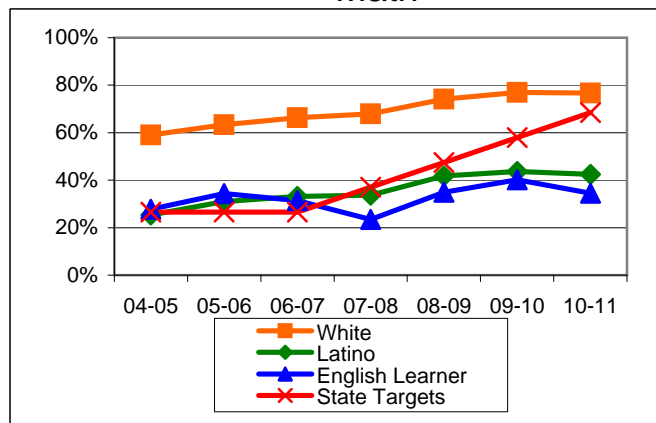
Mark 1

Mark 2

ELA

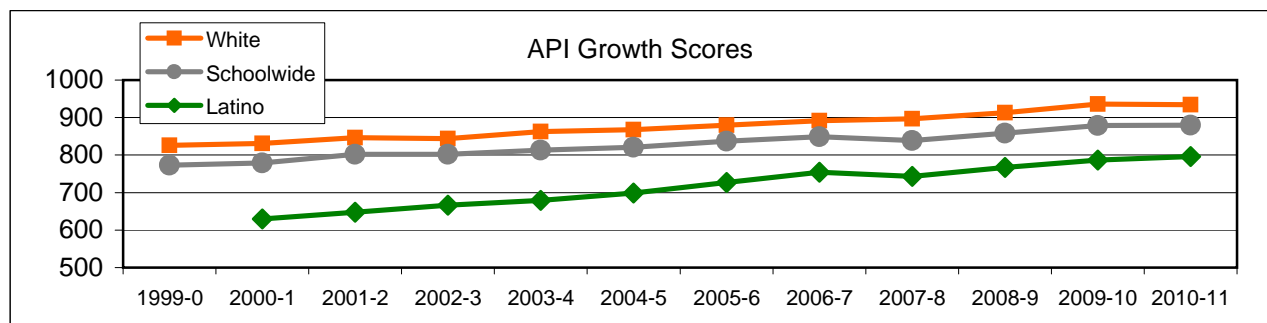


Math



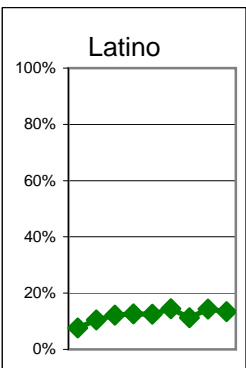
Exceed State Academic Performance Index (API) Growth Goals

	Schoolwide			Latino			White		
	Base	Growth/ Goal Met	State API (7-8)	Base	Growth/ Goal Met	State API (7-8)	Base	Growth/ Goal Met	State API (7-8)
2003-4	806	813 Met		669	679 Met		850	863 Met	
2004-5	814	821 Met		681	699 Met		863	868 Met	
2005-6	821	837 Met	715	699	727 Met	642	868	880 Met	805
2006-7	835	849 Met	720	724	754 Met	651	878	892 Met	807
2007-8	849	839 Met	735	754	743 Not Met	669	892	897 Met	818
2008-9	848	858 Met	754	758	767 Met	690	901	913 Met	833
2009-10	854	879 Met	765	763	787 Met	706	910	936 Met	842
2010-11	880	880 Met	778	787	796 Met	723	936	934 Met	850



Increase Participation Across Demographic Spectrum in Advanced Courses

GATE (percent of all GATE students, Aeries 12-2010)	Latino		White		All Others	
	Number	Percent	Number	Percent	Number	Percent
2003-4	14	7.7%	143	78.1%	26	14.2%
2004-5	33	10.4%	248	78.5%	35	11.1%
2005-6	41	12.2%	256	76.2%	39	11.6%
2006-7	38	12.6%	225	74.5%	39	12.9%
2007-8	38	12.5%	228	75.0%	38	12.5%
2008-9	44	14.4%	219	71.8%	42	13.8%
Note: In 2010 ethnicity/race definitions changed					Non-Latino	
2009-10	32	11.3%			251	88.7%
2010-11	32	14.3%			192	85.7%
2011-12	30	13.5%			193	86.5%



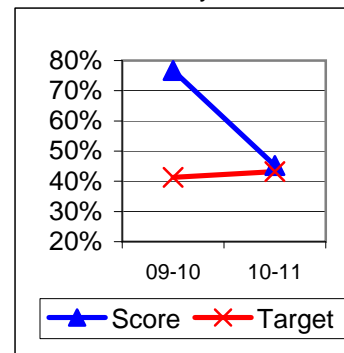
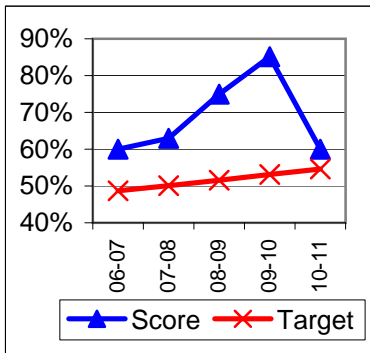
Progress on English Learners Gaining One Proficiency Level Annually and Attaining English Language Proficiency

Taken from DataQuest	AMAO 1 Gained one Level on CELDT		AMAO 2 English Proficiency		Gained	
	Target	Score	Target	Score	Target	Score
03-04	51.0%		30.0%			
04-05	51.5%	75.8%	30.7%	39.6%		
05-06	52.0%	86.4%	31.4%	76.9%		
06-07	48.7%	60.0%	27.2%	28.0%	New Norms	
07-08	50.1%	63.0%	28.9%	44.0%		
08-09	51.6%	75.0%	30.6%	50.0%		
			Less than 5 years cohort		Greater than 5 years cohort	
09-10	53.1%	85.1%	17.4%		41.3%	76.7%
10-11	54.6%	60.0%	18.7%		43.2%	45.2%

AMAO 1

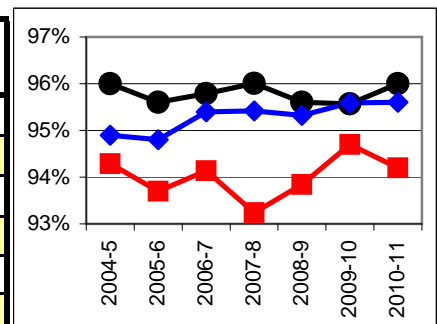
AMAO 2 < 5 years

AMAO 2 > 5 years



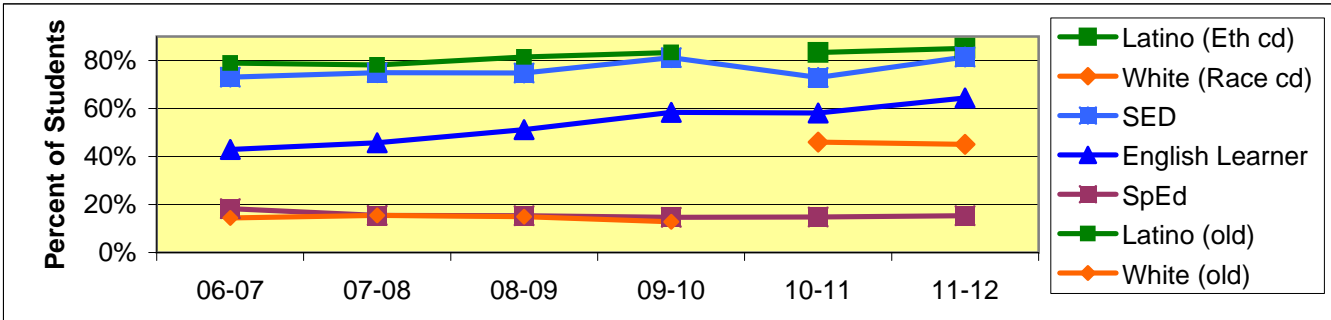
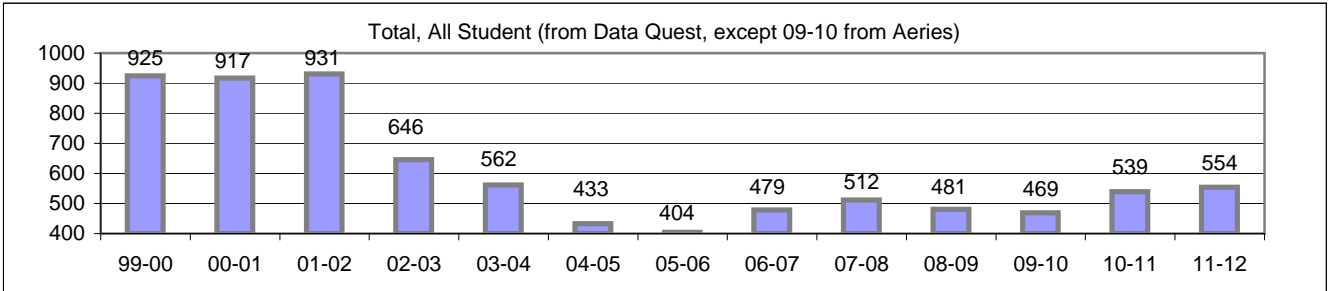
Increase Efforts to Enhance Revenue

Attendance (Percent over year) (Attendance Office)	Lowest Month	Whole Year	District (Jr.)
2004-5	94.3%	96.0%	94.9%
2005-6	93.7%	95.6%	94.8%
2006-7	94.1%	95.8%	95.4%
2007-8	93.2%	96.0%	95.4%
2008-9	93.8%	95.6%	95.3%
2009-10	94.7%	95.6%	95.6%
2010-11	94.2%	96.0%	95.6%



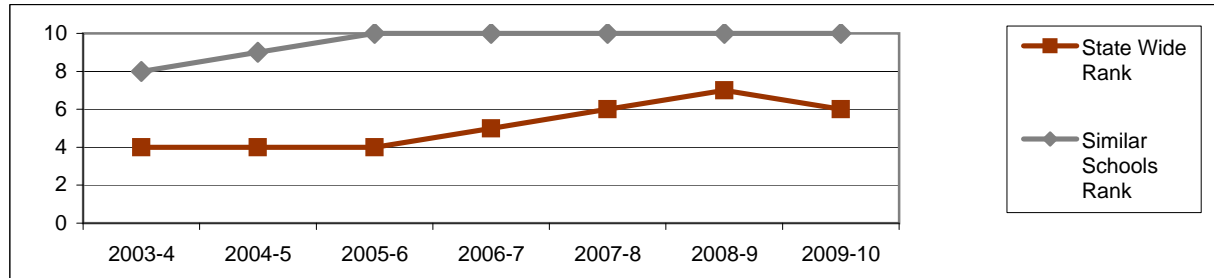
Board Focus Goals: La Cumbre Junior High (2) - Sept. 2011

Demographics (7-8, Sept 7, 2011, Aeries)	Total	Female	Male	Latino (Eth cd)	White (Race cd)	SED	English Learner	SpEd
Number	554	264	290	471	250	451	357	85
Percent of Total		47.7%	52.3%	85.0%	45.1%	81.4%	64.4%	15.3%



Achieve a State Similar School Ranking of 8 or Higher (scale = 1-10)

	State Wide Rank	Similar Schools Rank	Similar Schools Latino	Similar Schools White	Similar Schools SED	Similar Schools EL	Similar Schools Disab
2003-4	4	8	8	na	6	na	na
2004-5	4	9	10	na	10	8	9
2005-6	4	10	9	na	7	7	8
2006-7	5	10	10	na	8	7	9
2007-8	6	10	10	10	9	7	na
2008-9	7	10					
2009-10	6	10					

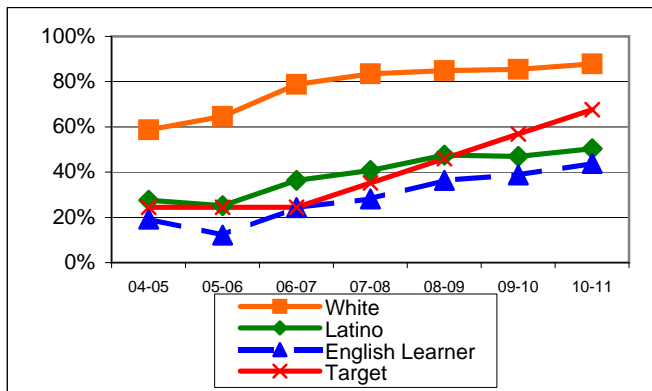


Exceed Federal Adequate Yearly Progress (AYP) Accountability Goals (Blue = Not enough students, **Bold/underline/italic** = Made by adjustment, Red = Did not pass

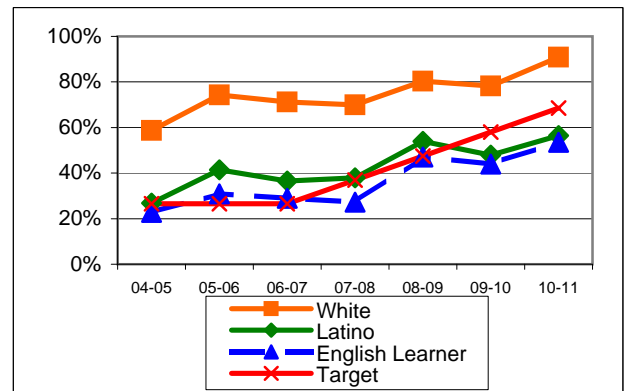
English Language Arts (ELA): Percent Proficient or Higher (based on CST exams)	State Targets	Schoolwide	Latino	White	Socio-Econ Disadv	English Learner	Stud with Disab	
04-05	24.4%	31.3%	27.6%	58.7%	24.5%	19.2%	8.3%	PI Y2
05-06	24.4%	29.4%	25.2%	64.7%	20.3%	12.1%	8.1%	PI Y3
06-07	24.4%	45.2%	36.3%	78.8%	33.2%	24.3%	17.5%	PI Y4
07-08	35.2%	48.4%	40.7%	83.5%	38.3%	28.2%	18.4%	PI Y4
08-09	46.0%	54.0%	47.5%	84.8%	47.7%	36.4%	47.3%	PI Y5
09-10	56.8%	53.3%	47.0%	85.5%	46.5%	38.7%	60.9%	FR Y5
10-11	67.6%	56.0%	50.3%	87.9%	49.1%	43.8%	64.4%	PI Y5
State Average 2-12, 2010-11		56.2%	44.7%	72.3%	44.0%	38.7%	34.3%	
11-12	78.4%							PI Y5

Math: Percent Proficient or Higher (Based on CST exams)	State Targets	Schoolwide	Latino	White	Socio-Econ Disadv	English Learner	Stud with Disab	
04-05	26.5%	30.3%	26.8%	58.7%	25.5%	22.8%	19.0%	PI Y2
05-06	26.5%	45.3%	41.5%	74.3%	37.5%	30.9%	19.5%	PI Y3
06-07	26.5%	43.8%	36.5%	71.2%	33.7%	29.0%	22.2%	PI Y4
07-08	37.0%	44.2%	37.9%	70.0%	36.9%	27.3%	19.5%	PI Y4
08-09	47.5%	58.6%	53.9%	80.3%	54.2%	47.0%	33.8%	PI Y5
09-10	58.0%	53.0%	47.9%	78.2%	48.5%	44.0%	42.0%	FR Y5
10-11	68.5%	62.1%	56.4%	90.9%	56.4%	53.5%	48.3%	PI Y5
State Average 2-12, 2010-11		58.4%	49.5%	70.1%	49.0%	48.7%	36.1%	
11-12	79.0%							PI Y5

ELA

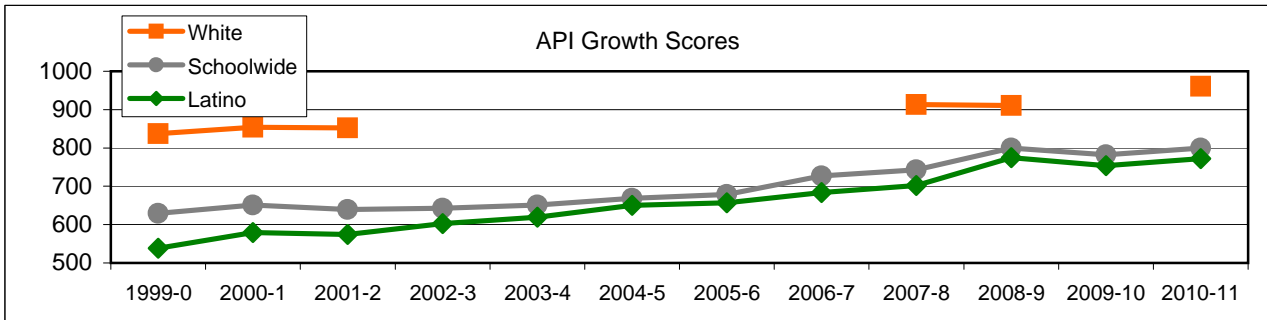


Math



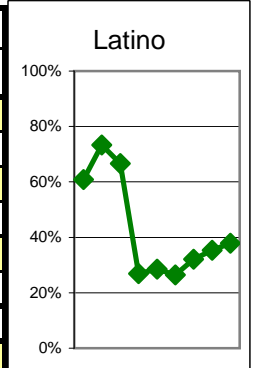
Exceed State Academic Performance Index (API) Growth Goals

	Schoolwide			Latino			White		
	Base	Growth/ Goal Met	State API (7-8)	Base	Growth/ Goal Met	State API (7-8)	Base	Growth/ Goal Met	State API (7-8)
2003-4	611	651 Met		570	619 Met				
2004-5	658	669 Met		627	650 Met				
2005-6	669	679 Met	715	650	657 Met	642			805
2006-7	680	727 Met	720	658	684 Met	651			807
2007-8	727	743 Met	735	684	702 Met	669		913 Met	818
2008-9	759	800 Met	754	720	775 Met	690	916	911 Met	833
2009-10	789	782 NotMet	765	764	754 NotMet	706			842
2010-11	782	800 Met	778	754	772 Met	723	931	961 Met	850



Increase Participation Across Demographic Spectrum in Advanced Courses

GATE (percent of all GATE students, Aeries 12-2010)	Latino		White		All Others	
	Number	Percent	Number	Percent	Number	Percent
2003-4	28	60.9%	15	32.6%	3	6.5%
2004-5	33	73.3%	12	26.7%	0	0.0%
2005-6	32	66.7%	11	22.9%	5	10.4%
2006-7	14	26.9%	32	61.5%	6	11.5%
2007-8	16	28.6%	34	60.7%	6	10.7%
2008-9	9	26.5%	22	64.7%	3	8.8%
Note: In 2010 ethnicity/race definitions changed					Non-Latino	
2009-10	9	32.1%			19	67.9%
2010-11	12	35.3%			22	64.7%
2011-12	11	37.9%			18	62.1%



La Cumbre continued

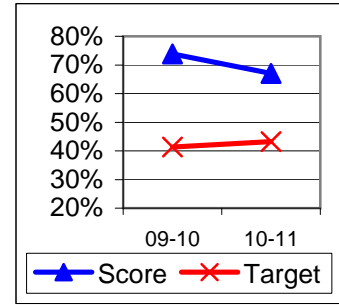
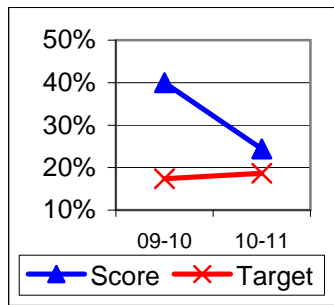
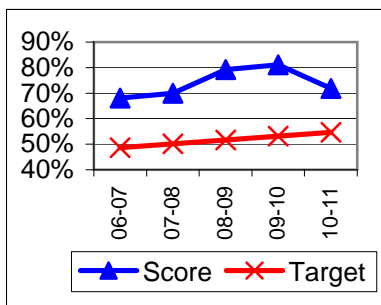
Progress on English Learners Gaining One Proficiency Level Annually and Attaining English Language Proficiency

Taken from DataQuest	AMAO 1 Gained one Level on CELDT		AMAO 2 English Proficiency		Gained	
	Target	Score	Target	Score	Target	Score
03-04	51.0%		30.0%			
04-05	51.5%	86.5%	30.7%	58.8%		
05-06	52.0%	79.1%	31.4%	52.5%		
06-07	48.7%	68.1%	27.2%	37.4%	New Norms	
07-08	50.1%	70.0%	28.9%	39.0%		
08-09	51.6%	79.2%	30.6%	41.9%		
			Less than 5 years cohort		Greater than 5 years cohort	
09-10	53.1%	81.1%	17.4%	40.0%	41.3%	73.9%
10-11	54.6%	71.8%	18.7%	24.4%	43.2%	67.0%

AMAO 1

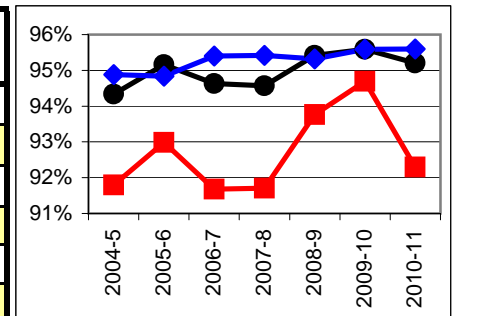
AMAO 2 <
5 years

AMAO 2 >
5 years



Increase Efforts to Enhance Revenue

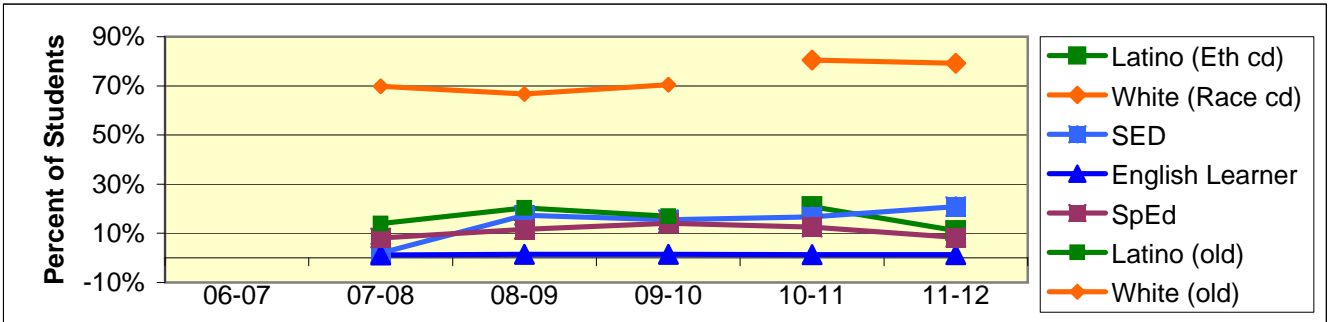
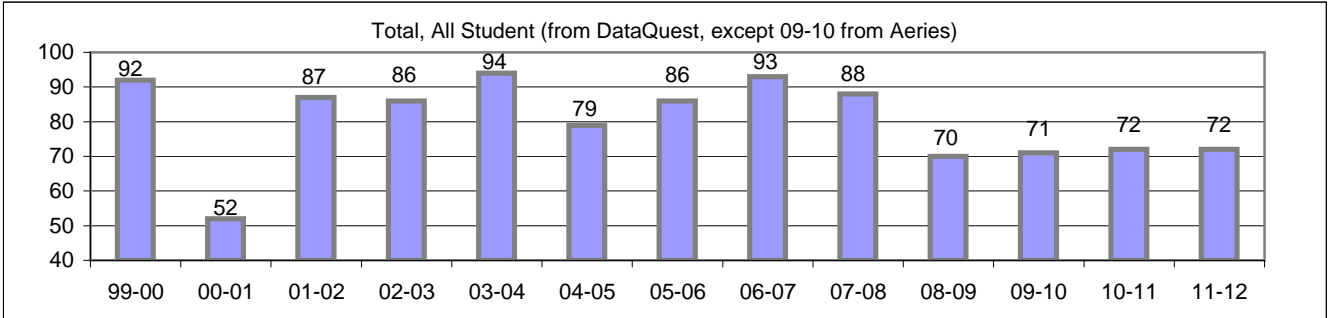
Attendance (Percent over year) (Attendance Office)	Lowest Month	Whole Year	District (Jr.)
2004-5	91.8%	94.3%	94.9%
2005-6	93.0%	95.2%	94.8%
2006-7	91.7%	94.6%	95.4%
2007-8	91.7%	94.6%	95.4%
2008-9	93.8%	95.4%	95.3%
2009-10	94.7%	95.6%	95.6%
2010-11	92.3%	95.2%	95.6%



Prepared by Dr. Davis Hayden, Director of Research, Evaluation, and Technology

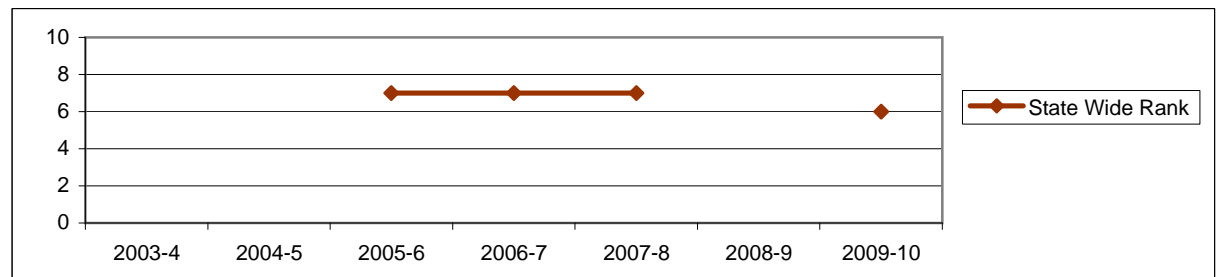
Board Focus Goals: Santa Barbara Charter Middle (8) - Sept. 2011

Demographics (7-8, Sept 7, 2011, Aeries)	Total	Female	Male	Latino (Eth cd)	White (Race cd)	SED	English Learner	SpEd
Number	72	37	36	8	57	15	1	6
Percent of Total		51.4%	50.0%	11.1%	79.2%	20.8%	1.4%	8.3%



Achieve a State Similar School Ranking of 8 or Higher (scale = 1-10)

	State Wide Rank	Similar Schools Rank	Similar Schools Latino	Similar Schools White	Similar Schools SED	Similar Schools EL	Similar Schools Disab
2003-4	na	na	na	na	na	na	na
2004-5	na	na	na	na	na	na	na
2005-6	7	na	na	na	na	na	na
2006-7	7	na	na	na	na	na	na
2007-8	7	na	na	na	na	na	na
2008-9	na	na					
2009-10	6	na					

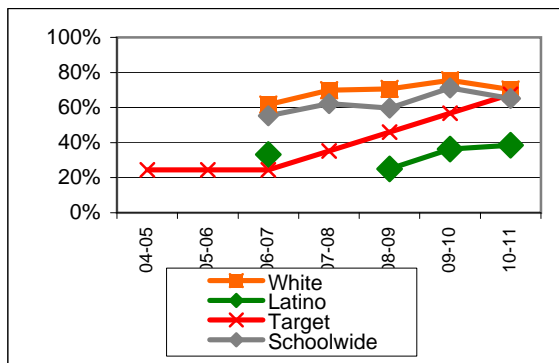


Exceed Federal Adequate Yearly Progress (AYP) Accountability Goals (Blue = Not enough students, Bold/underline/italic = Made by adjustment, Red = Did not pass

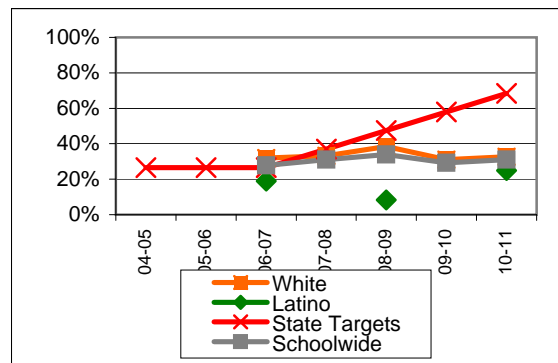
English Language Arts (ELA): Percent Proficient or Higher (based on CST exams)	State Targets	Schoolw ide	Latino	White	Socio- Econ Disadv	English Learner	Stud with Disab
04-05	24.4%						
05-06	24.4%						
06-07	24.4%	55.3%	33.3%	61.7%	27.3%		
07-08	35.2%	62.2%		69.8%			
08-09	46.0%	59.7%	25.0%	70.7%	25.0%		
09-10	56.8%	71.2%	36.4%	75.6%			
10-11	67.6%	65.1%	38.5%	70.2%	41.7%		
State Average 2-12, 2010-11		56.2%	44.7%	72.3%	44.0%	38.7%	34.3%
11-12	78.4%						

Math: Percent Proficient or Higher (Based on CST exams)	State Targets	Schoolw ide	Latino	White	Socio- Econ Disadv	English Learner	Stud with Disab
04-05	26.5%						
05-06	26.5%						
06-07	26.5%	27.8%	19.0%	32.0%	18.2%		
07-08	37.0%	31.0%		33.3%			
08-09	47.5%	33.9%	8.3%	38.5%	25.0%		
09-10	58.0%	29.3%		31.0%			Mark 1
10-11	68.5%	31.0%	25.0%	32.6%	16.7%		Mark 2
State Average 2-12, 2010-11		58.4%	49.5%	70.1%	49.0%	48.7%	36.1%
11-12	79.0%						

ELA

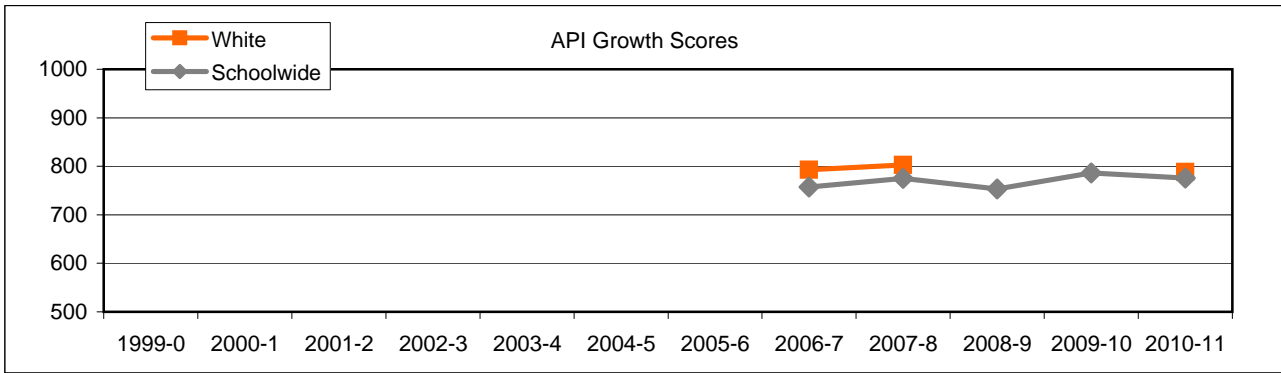


Math



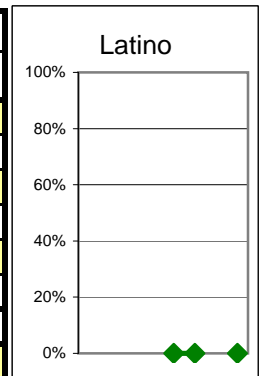
Exceed State Academic Performance Index (API) Growth Goals

	Schoolwide			Latino			White		
	Base	Growth/ Goal Met	State API (7-8)	Base	Growth/ Goal Met	State API (7-8)	Base	Growth/ Goal Met	State API (7-8)
2003-4									
2004-5									
2005-6			715			642			805
2006-7	766	757 NotMet	720			651		793 Met	807
2007-8	757	775 Met	735			669	793	803 Met	818
2008-9	783	753 NotMet	754			690	814		833
2009-10	741	786 Met	765			706			842
2010-11	784	776 NotMet	778	669	705	723	803	788	850



Increase Participation Across Demographic Spectrum in Advanced Courses

GATE (percent of all GATE students, Aeries 12-2010)	Latino		White		All Others	
	Number	Percent	Number	Percent	Number	Percent
2003-4						
2004-5						
2005-6						
2006-7						
2007-8	0	0.0%	1	100.0%	0	0.0%
2008-9	0	0.0%	1	100.0%	0	0.0%
Note: In 2010 ethnicity/race definitions changed					Non-Latino	
2009-10	0	0.0%	0	0.0%	0	0.0%
2010-11	0	0.0%			0	0.0%
2011-12	0	0.0%			1	100.0%



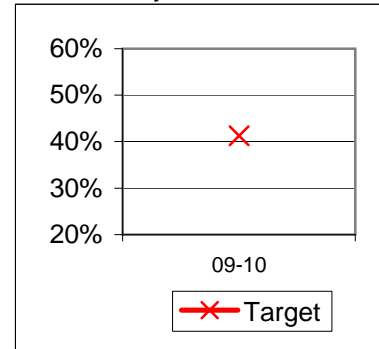
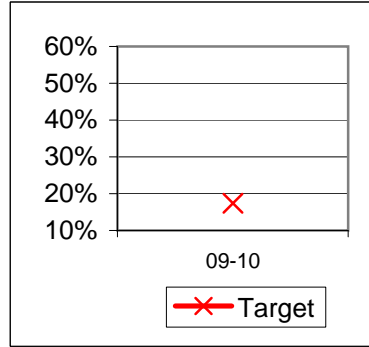
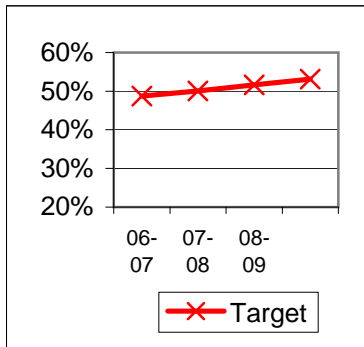
Progress on English Learners Gaining One Proficiency Level Annually and Attaining English Language Proficiency

Taken from DataQuest	AMAO 1 Gained one Level on CELDT		AMAO 2 English Proficiency		Gained	
	Target	Score	Target	Score	Target	Score
03-04						
04-05						
05-06						
06-07	48.7%		27.2%		New Norms	
07-08	50.1%		28.9%			
08-09	51.6%		30.6%			
			Less than 5 years cohort		Greater than 5 years cohort	
09-10	53.1%		17.4%		41.3%	
10-11	54.6%		18.7%		43.2%	

AMAO 1

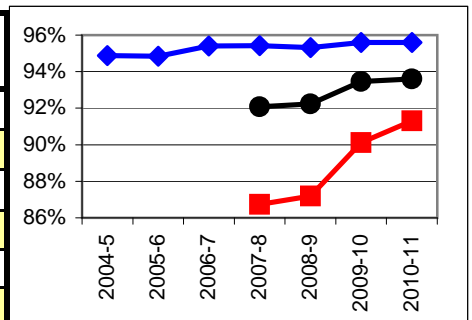
AMAO 2 < 5 years

AMAO 2 > 5 years



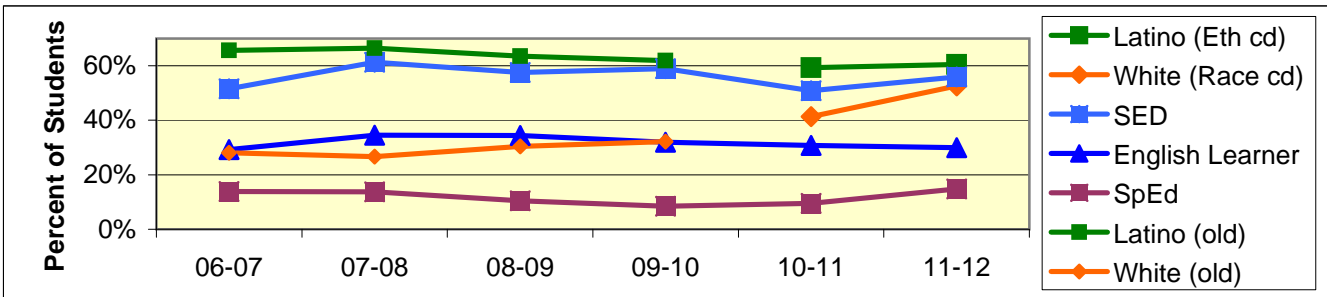
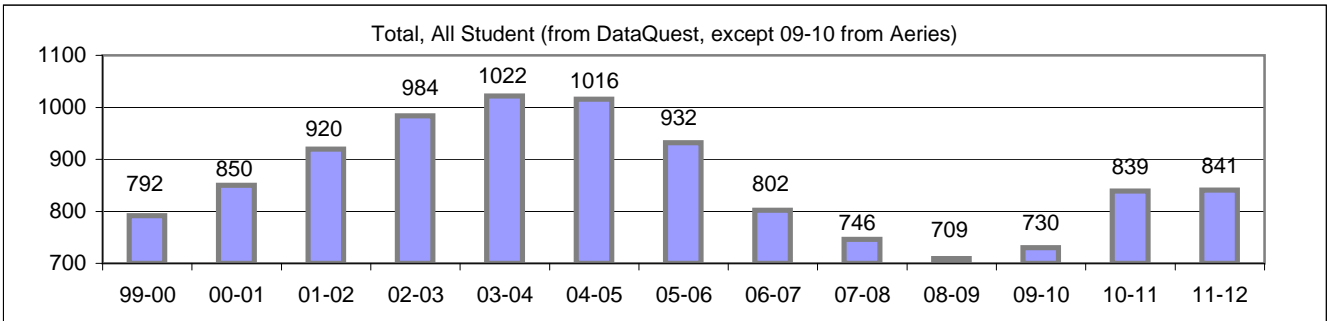
Increase Efforts to Enhance Revenue

Attendance (Percent over year) (Attendance Office)	Lowest Month	Whole Year	District (Jr.)
2004-5			94.9%
2005-6			94.8%
2006-7			95.4%
2007-8	86.7%	92.1%	95.4%
2008-9	87.2%	92.2%	95.3%
2009-10	90.1%	93.5%	95.6%
2010-11	91.3%	93.6%	95.6%



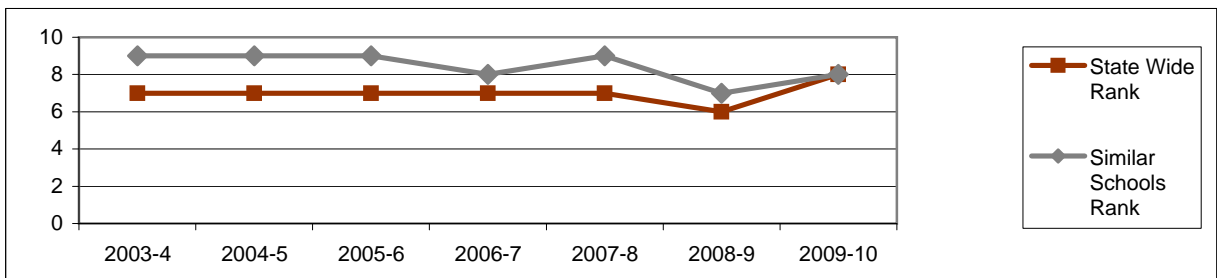
Board Focus Goals: Santa Barbara Junior High (5) - Sept. 2011

Demographics (7-8, Sept 7, 2011, Aeries)	Total	Female	Male	Latino (Eth cd)	White (Race cd)	SED	English Learner	SpEd
Number	841	385	456	509	443	470	252	124
Percent of Total		45.8%	54.2%	60.5%	52.7%	55.9%	30.0%	14.7%



Achieve a State Similar School Ranking of 8 or Higher (scale = 1-10)

	State Wide Rank	Similar Schools Rank	Similar Schools Latino	Similar Schools White	Similar Schools SED	Similar Schools EL	Similar Schools Disab
2003-4	7	9	5	10	5	na	na
2004-5	7	9	6	10	5	7	6
2005-6	7	9	7	10	6	5	5
2006-7	7	8	6	10	6	7	na
2007-8	7	9	6	10	7	6	na
2008-9	6	7					
2009-10	8	8					

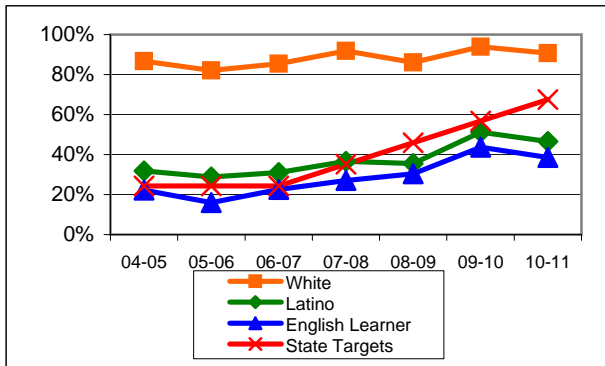


Exceed Federal Adequate Yearly Progress (AYP) Accountability Goals (Blue = Not enough students, **Bold/underline/italic** = Made by adjustment, **Red** = Did not pass

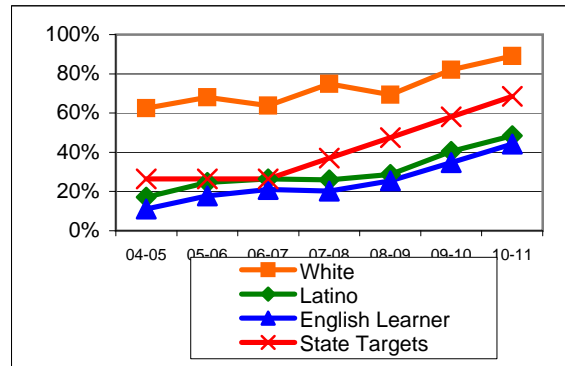
English Language Arts (ELA): Percent Proficient or Higher (based on CST exams)	State Targets	Schoolwide	Latino	White	Socio-Econ Disadv	English Learner	Stud with Disab	
04-05	24.4%	51.3%	31.9%	86.8%	30.1%	<u>22.3%</u>	4.1%	PI Y1
05-06	24.4%	48.3%	28.8%	82.1%	27.0%	16.0%	5.6%	PI Y2
06-07	24.4%	48.9%	31.1%	85.4%	28.6%	<u>22.5%</u>	4.2%	PI Y3
07-08	35.2%	54.5%	36.6%	91.8%	36.7%	27.0%	11.0%	PI Y4
08-09	46.0%	52.5%	35.6%	86.1%	36.3%	30.4%	16.4%	PI Y5
09-10	56.8%	65.8%	<u>51.2%</u>	93.9%	<u>51.1%</u>	<u>43.7%</u>	32.1%	PI Y5
10-11	67.6%	63.6%	46.6%	90.8%	44.1%	38.5%	23.3%	FR Y5
State Average 2-12, 2010-11		56.2%	44.7%	72.3%	44.0%	38.7%	34.3%	
11-12	78.4%							PI Y5

Math: Percent Proficient or Higher (Based on CST exams)	State Targets	Schoolwide	Latino	White	Socio-Econ Disadv	English Learner	Stud with Disab	
04-05	26.5%	33.1%	17.1%	62.4%	16.0%	11.1%	3.3%	PI Y1
05-06	26.5%	40.3%	<u>24.6%</u>	68.1%	24.5%	17.7%	4.7%	PI Y2
06-07	26.5%	39.2%	26.5%	63.8%	25.6%	21.0%	9.4%	PI Y3
07-08	37.0%	41.8%	25.9%	74.9%	26.8%	20.2%	7.8%	PI Y4
08-09	47.5%	42.3%	28.7%	69.3%	28.7%	25.4%	11.0%	PI Y5
09-10	58.0%	<u>54.8%</u>	<u>40.5%</u>	82.1%	<u>38.7%</u>	<u>34.8%</u>	21.2%	PI Y5
10-11	68.5%	<u>64.1%</u>	<u>48.5%</u>	89.0%	<u>46.8%</u>	<u>44.2%</u>	20.9%	FR Y5
State Average 2-12, 2010-11		58.4%	49.5%	70.1%	49.0%	48.7%	36.1%	
11-12	79.0%							PI Y5

ELA

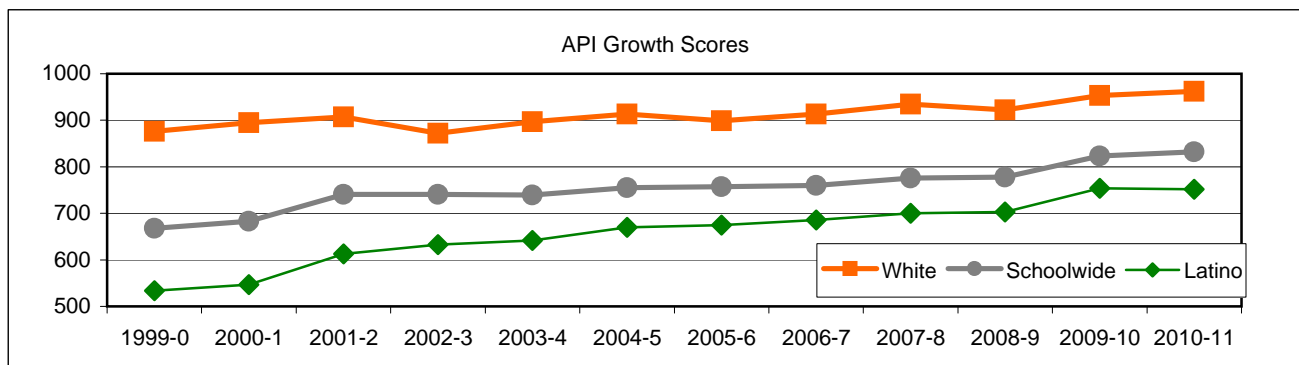


Math



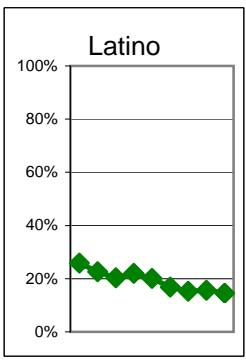
Exceed State Academic Performance Index (API) Growth Goals

	Schoolwide			Latino			White		
	Base	Growth/ Goal Met	State API (7-8)	Base	Growth/ Goal Met	State API (7-8)	Base	Growth/ Goal Met	State API (7-8)
2003-4	746	739 NotMet		637	642 Met		878	897 Met	
2004-5	738	755 Met		643	670 Met		894	913 Met	
2005-6	755	757 Met	715	670	675 Met	642	913	899 Met	805
2006-7	763	760 NotMet	720	681	686 NotMet	651	901	913 Met	807
2007-8	760	776 Met	735	686	700 Met	669	913	935 Met	818
2008-9	791	778 NotMet	754	717	703 NotMet	690	941	922 Met	833
2009-10	773	823 Met	765	700	754 Met	706	920	953 Met	842
2010-11	823	832 Met	778	754	752 NotMet	723	953	962 Met	850



Increase Participation Across Demographic Spectrum in Advanced Courses

GATE (percent of all GATE students, Aeries 12-2010)	Latino		White		All Others	
	Number	Percent	Number	Percent	Number	Percent
2003-4	46	25.8%	120	67.4%	12	6.7%
2004-5	55	22.6%	169	69.5%	19	7.8%
2005-6	43	20.4%	150	71.1%	18	8.5%
2006-7	31	22.0%	91	64.5%	19	13.5%
2007-8	29	20.1%	97	67.4%	18	12.5%
2008-9	21	16.8%	93	74.4%	11	8.8%
Note: In 2010 ethnicity/race definitions changed					Non-Latino	
2009-10	23	15.3%			127	84.7%
2010-11	24	15.6%			130	84.4%
2011-12	18	14.5%			106	85.5%



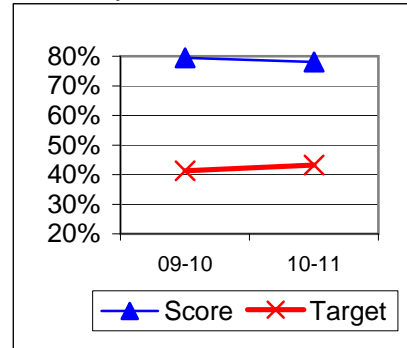
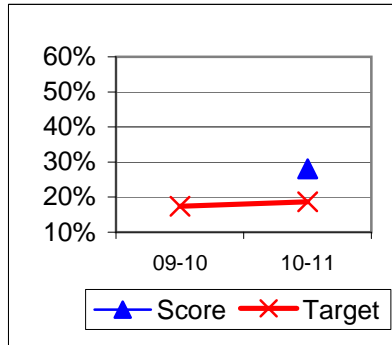
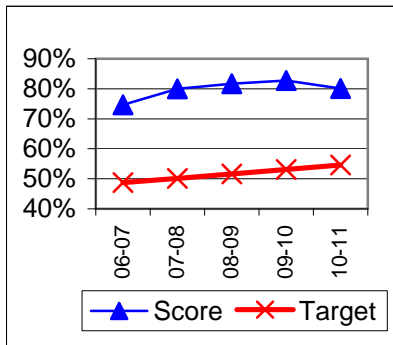
Progress on English Learners Gaining One Proficiency Level Annually and Attaining English Language Proficiency

Taken from DataQuest	AMAO 1 Gained one Level on CELDT		AMAO 2 English Proficiency		Gained	
	Target	Score	Target	Score	Target	Score
03-04	51.0%		30.0%			
04-05	51.5%	84.9%	30.7%	68.3%		
05-06	52.0%	82.4%	31.4%	63.9%		
06-07	48.7%	74.6%	27.2%	40.0%	New Norms	
07-08	50.1%	80.0%	28.9%	52.0%		
08-09	51.6%	81.7%	30.6%	50.0%		
			Less than 5 years cohort		Greater than 5 years cohort	
09-10	53.1%	82.7%	17.4%		41.3%	79.5%
10-11	54.6%	80.1%	18.7%	28.1%	43.2%	78.1%

AMAO 1

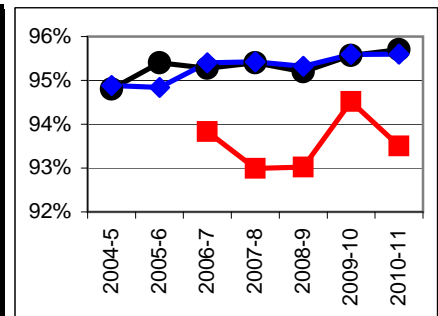
AMAO 2 <
5 years

AMAO 2
> 5 years



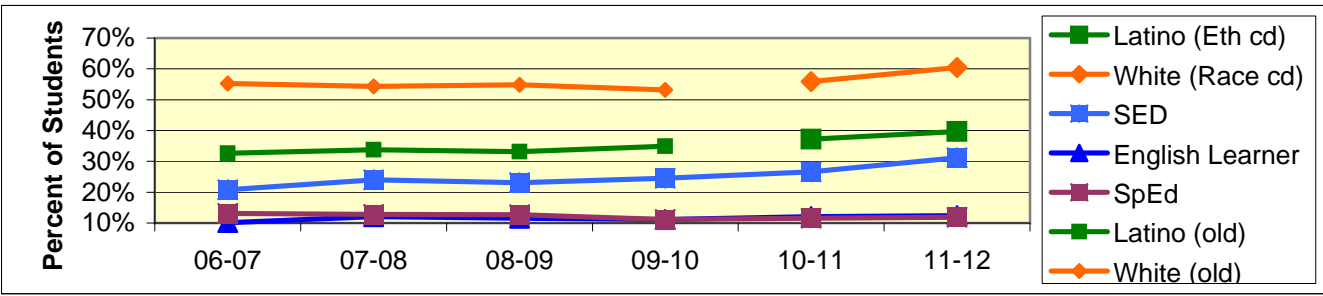
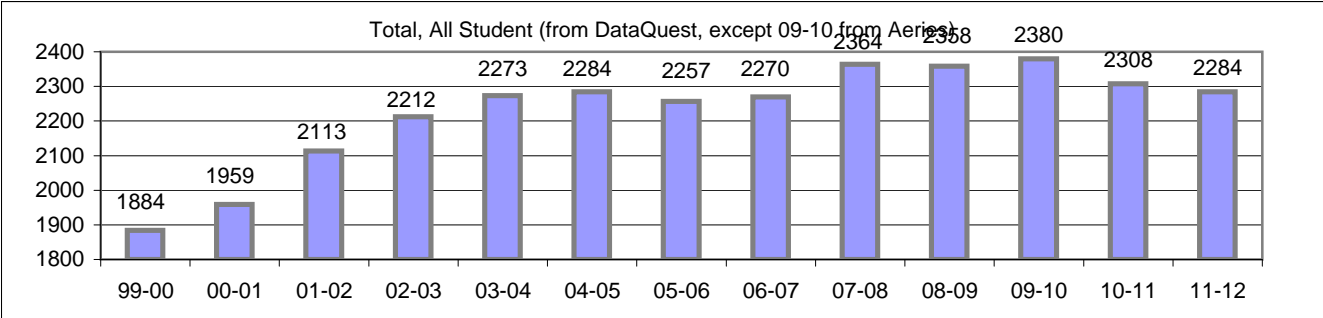
Increase Efforts to Enhance Revenue

Attendance (Percent over year) (Attendance Office)	Lowest Month	Whole Year	District (Jr.)
2004-5		94.8%	94.9%
2005-6		95.4%	94.8%
2006-7	93.8%	95.3%	95.4%
2007-8	93.0%	95.4%	95.4%
2008-9	93.0%	95.2%	95.3%
2009-10	94.5%	95.6%	95.6%
2010-11	93.5%	95.7%	95.6%



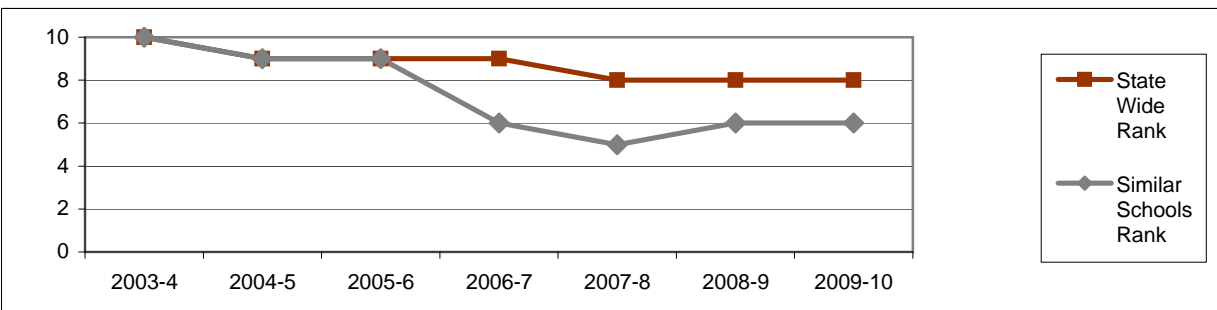
Board Focus Goals: Dos Pueblos High School (7) - Sept. 2011

Demographics (9-12, Sept 10, 2010, Aeries)	Total	Female	Male	Latino (Eth cd)	White (Race cd)	SED	English Learner	SpEd
Number	2284	1099	1185	906	1380	711	283	272
Percent of Total		48.1%	51.9%	39.7%	60.4%	31.1%	12.4%	11.9%



Achieve a State Similar School Ranking of 8 or Higher (scale = 1-10)

	State Wide Rank	Similar Schools Rank	Similar Schools Latino	Similar Schools White	Similar Schools SED	Similar Schools EL	Similar Schools Disab
2003-4	10	10	9	10	10	na	na
2004-5	9	9	5	10	3	4	9
2005-6	9	9	4	10	1	2	5
2006-7	9	6	1	10	1	3	6
2007-8	8	5	3	9	2	3	3
2008-9	8	6					
2009-10	8	6					

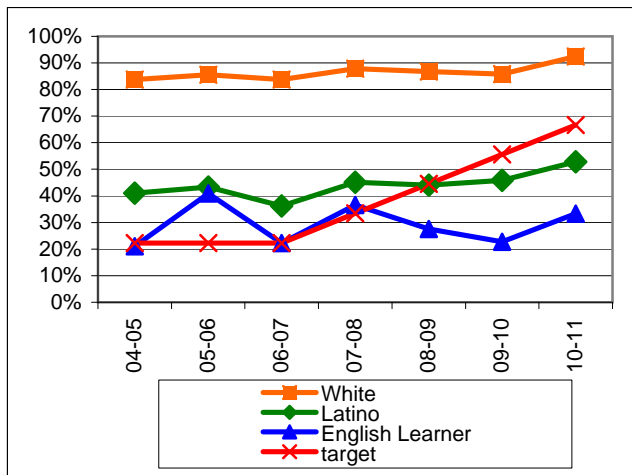


Exceed Federal Adequate Yearly Progress (AYP) Accountability Goals (Blue = Not enough students, **Bold/underline/italic** = Made by adjustment, **Red** = Did not pass (Purple = low Grad rate))

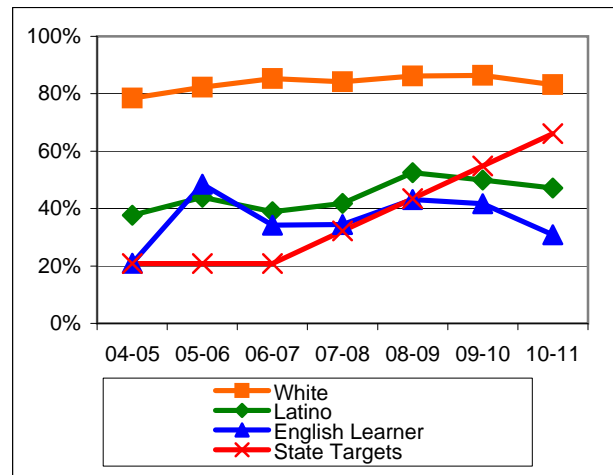
English Language Arts (ELA): Percent Proficient or Higher (Based on 10th grade Exit Exam (CAHSEE), Federal Cut Points)	State Targets	Schoolwide	Latino	White	Socio-Econ Disadv	English Learner	Stud with Disab	
04-05	22.3%	70.5%	41.0%	83.7%	29.0%	21.0%	17.3%	
05-06	22.3%	71.4%	43.3%	85.6%	31.3%	40.9%	13.8%	
06-07	22.3%	68.9%	36.2%	83.8%	30.6%	22.3%	19.4%	
07-08	33.4%	71.0%	45.1%	87.8%	40.5%	36.6%	19.4%	
08-09	44.5%	72.3%	44.0%	86.8%	38.2%	27.6%	25.6%	Mark 1
09-10	55.6%	70.4%	45.8%	85.8%	34.0%	22.7%	16.1%	Mark 2
10-11	66.7%	78.0%	52.8%	92.4%	49.2%	33.3%	25.5%	PI Y1
State Average 2-12, 2010-11		56.2%	44.7%	72.3%	44.0%	38.7%	34.3%	
11-12	77.8%							PI Y2

Math: Percent Proficient or Higher (Based on 10th grade Exit Exam (CAHSEE), Federal Cut Points)	State Targets	Schoolwide	Latino	White	Socio-Econ Disadv	English Learner	Stud with Disab	
04-05	20.9%	64.8%	37.7%	78.5%	25.3%	21.0%	17.8%	
05-06	20.9%	70.8%	43.9%	82.3%	42.3%	48.5%	15.8%	
06-07	20.9%	70.5%	38.9%	85.3%	35.3%	34.2%	19.7%	
07-08	32.2%	68.9%	41.8%	84.2%	42.5%	34.4%	21.5%	
08-09	43.5%	75.1%	52.5%	86.2%	49.7%	43.1%	32.1%	
09-10	54.8%	73.0%	50.0%	86.4%	42.1%	41.7%	16.4%	Mark 1
10-11	66.1%	70.5%	47.2%	83.2%	43.5%	30.9%	21.4%	PI Y1
State Average 2-12, 2010-11		58.4%	49.5%	70.1%	49.0%	48.7%	36.1%	
11-12	77.4%							PI Y2

ELA

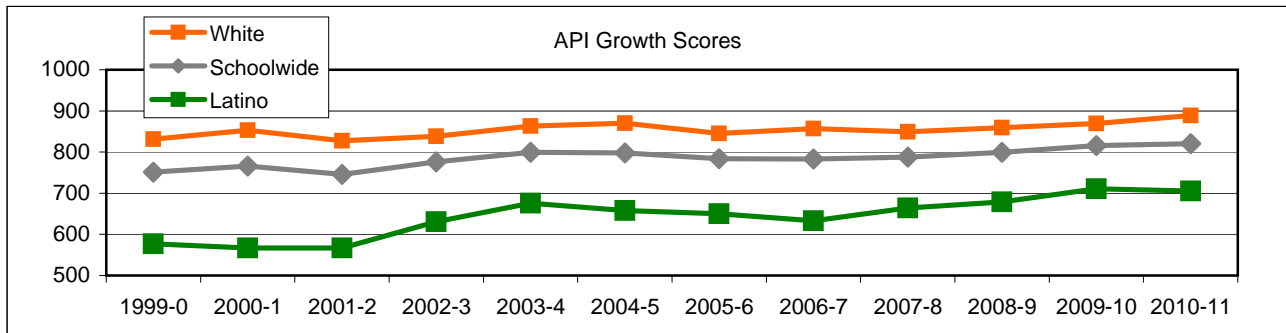


Math



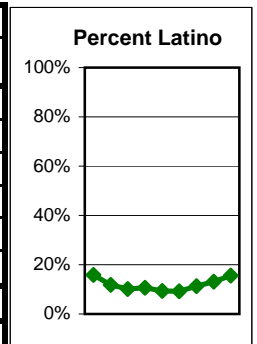
Exceed State Academic Performance Index (API) Growth Goals

	Schoolwide			Latino			White		
	Base	Growth/ Goal Met	State API (9-11)	Base	Growth/ Goal Met	State API (9-11)	Base	Growth/ Goal Met	State API (9-11)
2003-4	746	799 Met		603	676 Met		807	863 Met	
2004-5	814	798 Not Met		698	658 Not Met		872	870 Met	
2005-6	798	784 Not Met	680	658	650 Not Met	609	870	845 Met	755
2006-7	792	783 Not Met	689	659	633 Not Met	621	851	857 Met	765
2007-8	783	788 Met	702	633	664 Met	638	857	849 Met	776
2008-9	788	799 Met	713	664	679 Met	651	849	859 Met	788
2009-10	798	816 Met	729	679	711 Met	672	858	869 Met	801
2010-11	816	820 Met	741	711	705 NotMet	688	869	889 Met	809



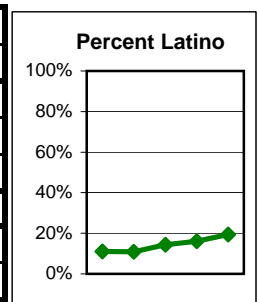
Increase Participation Across Demographic Spectrum in Advanced Courses (Percent of Students in Category)

GATE (percent of all GATE students, Aeries 12-2010)	Latino		White		All Others	
	Number	Percent	Number	Percent	Number	Percent
2003-4	44	15.9%	194	70.0%	39	14.1%
2004-5	53	11.8%	337	75.1%	59	13.1%
2005-6	61	10.1%	457	75.8%	85	14.1%
2006-7	68	10.6%	475	74.5%	95	14.9%
2007-8	62	9.4%	499	75.4%	101	15.3%
2008-9	61	9.3%	493	75.0%	103	15.7%
Note: In 2010 ethnicity/race definitions changed					Non-Latino	
2009-10	73	11.3%			572	88.7%
2010-11	85	13.1%			565	86.9%
2011-12	100	15.6%			540	84.4%

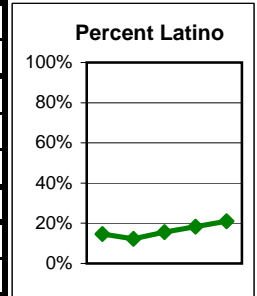


Dos Pueblos High Continued

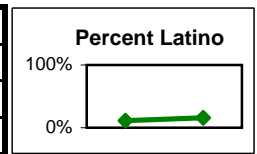
AP (Number taking at least 1 class, Aeries 12-2010 for 2009-10 year)	Latino		White		All Others	
	Number	Percent	Number	Percent	Number	Percent
2006-7	68	11.1%	448	73.1%	97	15.8%
2007-8	64	11.0%	415	71.1%	105	18.0%
2008-9	91	14.4%	438	69.1%	105	16.6%
Note: In 2010 ethnicity/race definitions changed					Non-Latino	
2009-10	100	16.1%			520	83.9%
2010-11	137	19.4%			571	80.6%



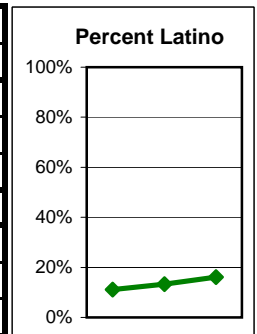
Honors (Number taking at least 1 class, Aeries 12-2010 for 2009-10 year)	Latino		White		All Others	
	Number	Percent	Number	Percent	Number	Percent
2006-7	160	14.6%	771	70.3%	166	15.1%
2007-8	129	12.3%	755	71.8%	168	16.0%
2008-9	174	15.6%	774	69.4%	167	15.0%
Note: In 2010 ethnicity/race definitions changed					Non-Latino	
2009-10	215	18.3%			958	81.7%
2010-11	258	21.0%			970	79.0%



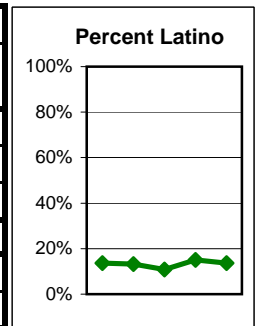
Engineering Academy (Number taking at least 1 class)	Latino		White		All Others	
	Number	Percent	Number	Percent	Number	Percent
2010-11	14	11.0%			113	89.0%
2011-12	32	15.8%			171	84.2%



International Baccalaureate (Number taking at least 1 class)	Latino		White		All Others	
	Number	Percent	Number	Percent	Number	Percent
2006-7	16	12.2%	99	75.6%	16	12.2%
2007-8	25	15.3%	120	73.6%	18	11.0%
2008-9	16	9.1%	131	74.4%	29	16.5%
Note: In 2010 ethnicity/race definitions changed					Non-Latino	
2009-10	4	11.1%			32	88.9%
2010-11	4	13.3%			26	86.7%
2011-12	5	16.1%			26	83.9%

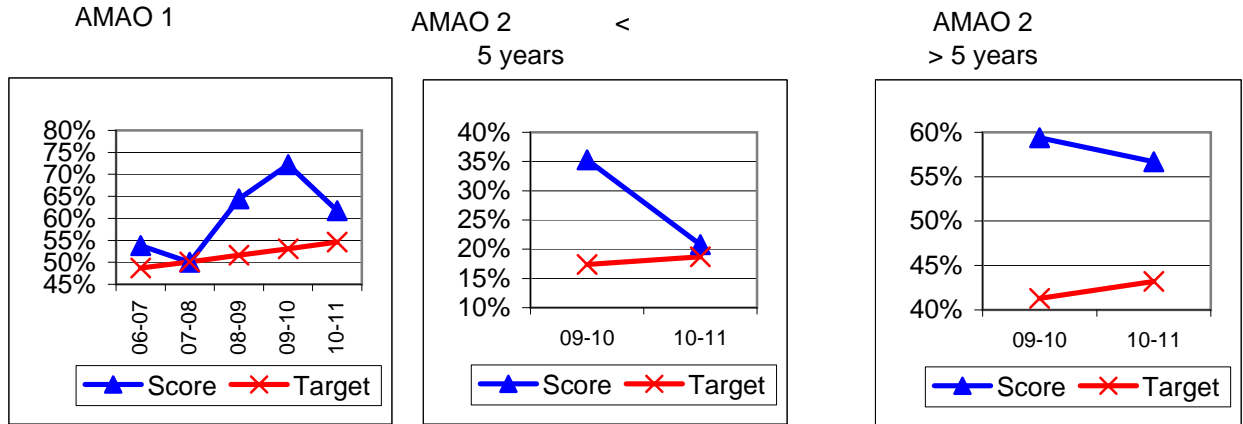


Dual Enrollment (Number taking at least 1 class; SBCC on campus or at SBCC; Aeries)	Latino		White		All Others	
	Number	Percent	Number	Percent	Number	Percent
2006-7	56	13.7%	295	72.1%	58	14.2%
2007-8	57	13.3%	296	68.8%	77	17.9%
2008-9	36	10.9%	219	66.2%	76	23.0%
Note: In 2010 ethnicity/race definitions changed					Non-Latino	
2009-10	82	15.1%			462	84.9%
2010-11	54	13.6%			343	86.4%



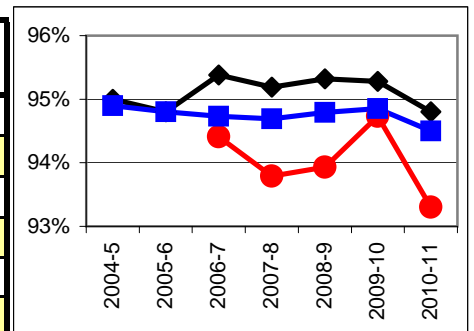
Progress on English Learners Gaining One Proficiency Level Annually and Attaining English Language Proficiency

Taken from DataQuest	AMAO 1 Gained one Level on CELDT		AMAO 2 English Proficiency		Gained	
	Target	Score	Target	Score	Target	Score
03-04	51.0%		30.0%			
04-05	51.5%	71.4%	30.7%	38.2%		
05-06	52.0%	76.3%	31.4%	37.7%		
06-07	48.7%	53.8%	27.2%	25.7%	New Norms	
07-08	50.1%	50.0%	28.9%	20.0%		
08-09	51.6%	64.4%	30.6%	33.9%		
			Less than 5 years cohort		Greater than 5 years cohort	
09-10	53.1%	72.2%	17.4%	35.3%	41.3%	59.4%
10-11	54.6%	61.7%	18.7%	20.8%	43.2%	56.7%



Increase Efforts to Enhance Revenue

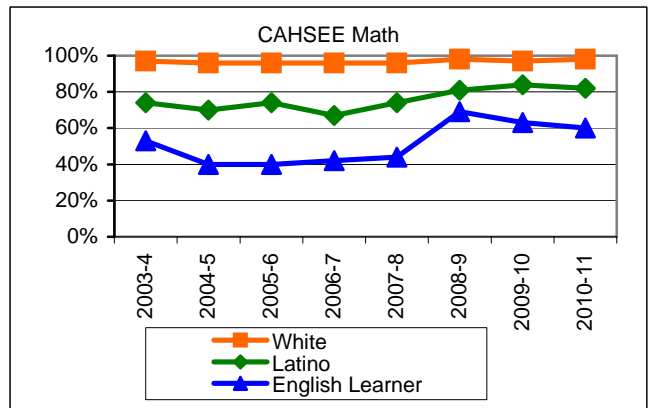
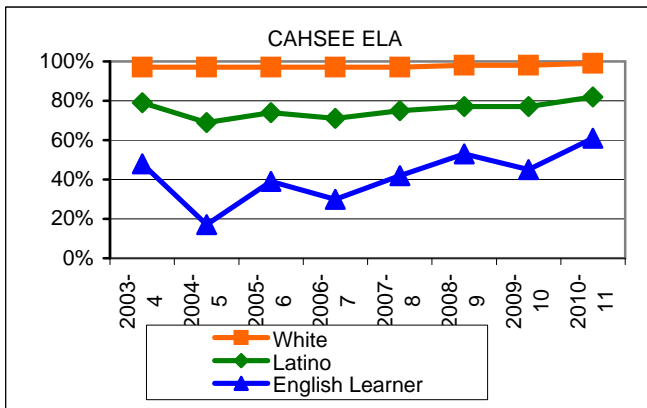
Attendance (Percent over year) (Attendance Office)	Lowest Month	Whole Year	District Sr.H.
2004-5		95.0%	94.9%
2005-6		94.8%	94.8%
2006-7	94.4%	95.4%	94.7%
2007-8	93.8%	95.2%	94.7%
2008-9	93.9%	95.3%	94.8%
2009-10	94.7%	95.3%	94.9%
2010-11	93.3%	94.8%	94.5%



Preparing Students to Pass the High School Exit Exam (CAHSEE)

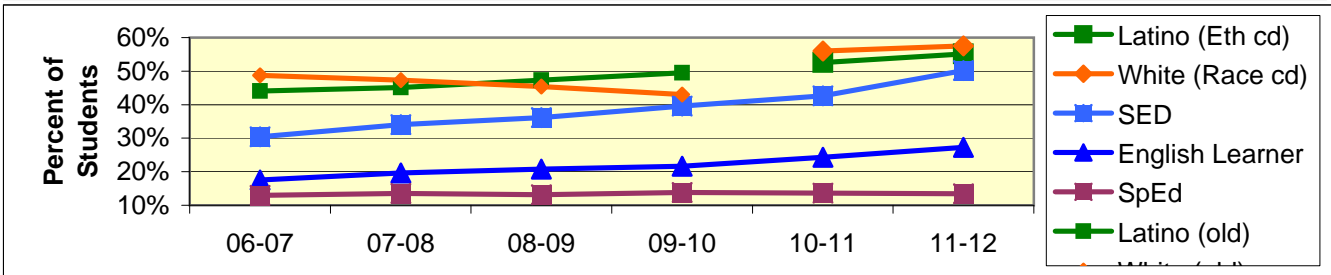
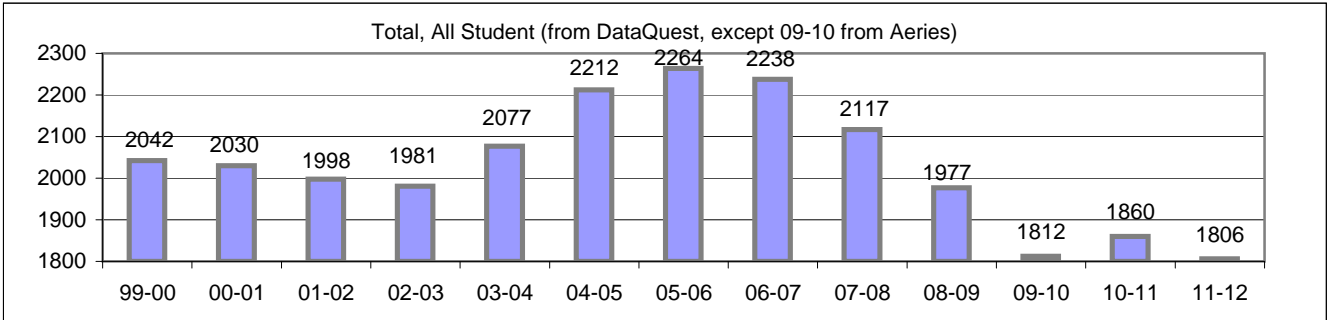
English Language Arts (ELA), March and May in that year, 10th grade only, California cut points (dataquest)	School wide	Latino	White	Socio-Econ Disadv	English Learner	Stud with Disab	State wide
2003-4	90.0%	79.0%	97.0%	75.0%	48.0%	58.0%	75.0%
2004-5	88.0%	69.0%	97.0%	62.0%	17.0%	54.0%	76.0%
2005-6	89.0%	74.0%	97.0%	68.0%	39.0%	51.0%	77.0%
2006-7	89.0%	71.0%	97.0%	66.0%	30.0%	50.0%	77.0%
2007-8	89.0%	75.0%	97.0%	71.0%	42.0%	48.0%	79.0%
2008-9	90.0%	77.0%	98.0%	72.0%	53.0%	65.0%	79.0%
2009-10	89.0%	77.0%	98.0%	69.0%	45.0%	46.0%	81.0%
2010-11	92.0%	82.0%	99.0%	81.0%	61.0%	52.0%	82.0%

Math, March and May in that year, 10th grade only, California cut points (dataquest)	School wide	Latino	White	Socio-Econ Disadv	English Learner	Stud with Disab	State wide
2003-4	89.0%	74.0%	97.0%	75.0%	53.0%	51.0%	74.0%
2004-5	87.0%	70.0%	96.0%	62.0%	40.0%	57.0%	74.0%
2005-6	88.0%	74.0%	96.0%	62.0%	40.0%	38.0%	76.0%
2006-7	87.0%	67.0%	96.0%	67.0%	42.0%	39.0%	76.0%
2007-8	88.0%	74.0%	96.0%	71.0%	44.0%	43.0%	78.0%
2008-9	92.0%	81.0%	98.0%	78.0%	69.0%	63.0%	80.0%
2009-10	92.0%	84.0%	97.0%	78.0%	63.0%	53.0%	81.0%
2010-11	92.0%	82.0%	98.0%	79.0%	60.0%	48.0%	83.0%



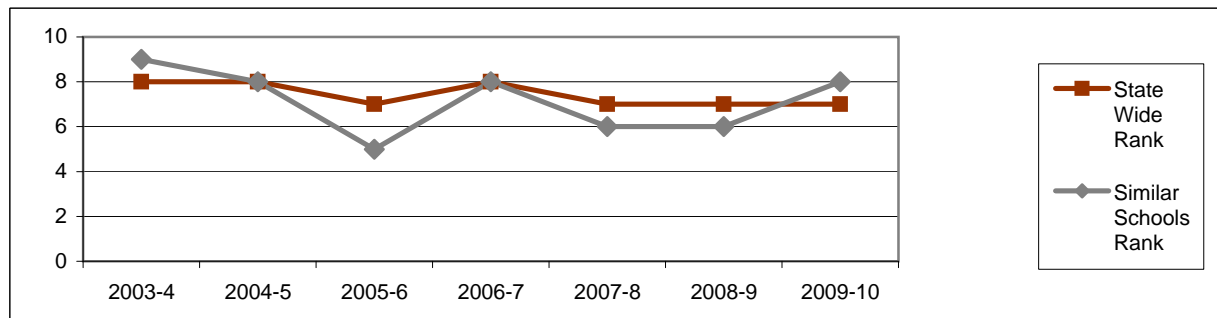
Board Focus Goals: San Marcos High School (3) - Sept. 2011

Demographics (9-12, Sept 7, 2011, Aeries)	Total	Female	Male	Latino (Eth cd)	White (Race cd)	SED	English Learner	SpEd
Number	1806	890	916	996	1039	906	493	242
Percent of Total		49.3%	50.7%	55.1%	57.5%	50.2%	27.3%	13.4%



Achieve a State Similar School Ranking of 8 or Higher (scale = 1-10)

	State Wide Rank	Similar Schools Rank	Similar Schools Latino	Similar Schools White	Similar Schools SED	Similar Schools EL	Similar Schools Disab
2003-4	8	9	6	10	5	NA	NA
2004-5	8	8	5	10	2	3	10
2005-6	7	5	2	9	1	2	3
2006-7	8	8	3	10	2	4	5
2007-8	7	6	2	10	2	3	6
2008-9	7	6	na	na	na	na	na
2009-10	7	8					

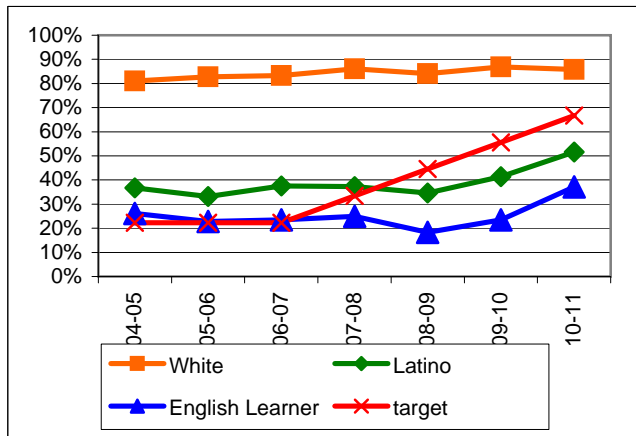


Exceed Federal Adequate Yearly Progress (AYP) Accountability Goals (Blue = Not enough students, **Bold/underline/italic** = Made by adjustment, Red = Did not pass (Purple = low Grad rate))

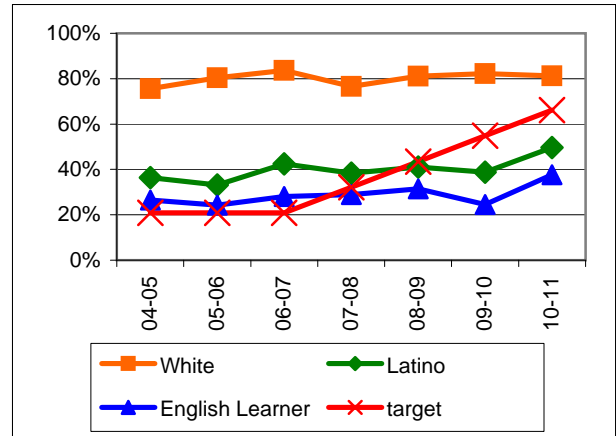
English Language Arts (ELA): Percent Proficient or Higher (Based on 10th grade Exit Exam (CAHSEE), Federal Cut Points)	State Targets	Schoolwide	Latino	White	Socio-Econ Disadv	English Learner	Stud with Disab	
04-05	22.3%	62.0%	36.8%	81.1%	30.7%	26.1%	37.7%	
05-06	22.3%	60.0%	33.1%	82.8%	28.4%	22.8%	5.3%	
06-07	22.3%	61.5%	37.5%	83.3%	32.2%	23.5%	19.7%	
07-08	33.4%	65.4%	37.3%	86.1%	35.3%	25.0%	35.3%	Mark 1
08-09	44.5%	60.2%	34.6%	84.1%	35.8%	18.3%	17.7%	Mark 2
09-10	55.6%	63.2%	<u>41.4%</u>	86.9%	34.3%	<u>23.5%</u>	10.4%	PI Y1
10-11	66.7%	64.5%	51.6%	85.8%	<u>49.5%</u>	37.1%	18.0%	PI Y2
State Average 2-12, 2010-11		56.2%	44.7%	72.3%	44.0%	38.7%	34.3%	
11-12	77.8%							PI Y3

Math: Percent Proficient or Higher (Based on 10th grade Exit Exam (CAHSEE), Federal Cut Points)	State Targets	Schoolwide	Latino	White	Socio-Econ Disadv	English Learner	Stud with Disab	
04-05	20.9%	59.5%	36.4%	75.6%	31.7%	26.5%	30.0%	
05-06	20.9%	59.0%	33.1%	80.4%	30.4%	24.2%	7.3%	
06-07	20.9%	64.3%	42.5%	83.7%	38.7%	28.1%	17.9%	
07-08	32.2%	61.2%	38.4%	76.6%	38.7%	28.9%	30.9%	Mark 1
08-09	43.5%	62.2%	41.1%	81.1%	41.3%	31.5%	19.4%	Mark 2
09-10	54.8%	60.2%	38.8%	82.2%	36.0%	24.6%	20.8%	PI Y1
10-11	66.1%	61.3%	49.6%	81.3%	<u>44.7%</u>	37.6%	13.3%	PI Y2
State Average 2-12, 2010-11		58.4%	49.5%	70.1%	49.0%	48.7%	36.1%	
11-12	77.4%							PI Y3

ELA

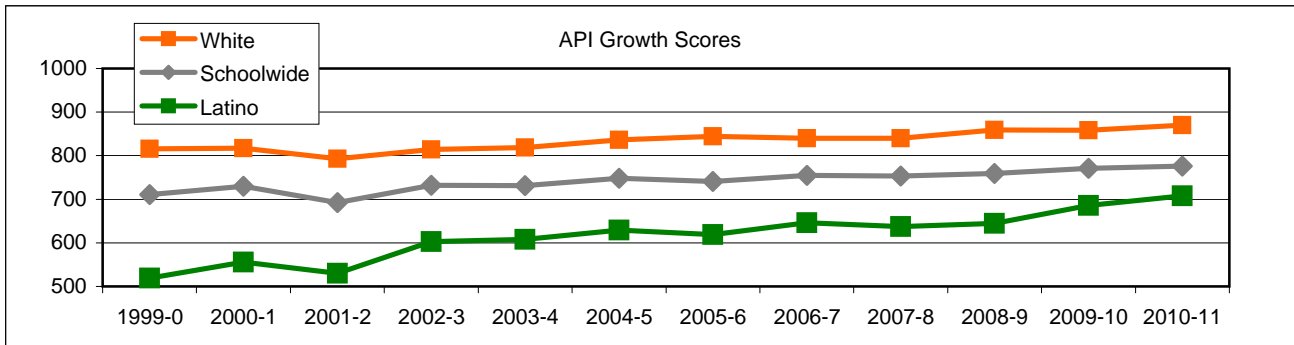


Math



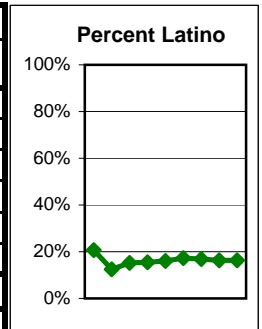
Exceed State Academic Performance Index (API) Growth Goals

	Schoolwide			Latino			White		
	Base	Growth/ Goal Met	State API (9-11)	Base	Growth/ Goal Met	State API (9-11)	Base	Growth/ Goal Met	State API (9-11)
2003-4	717	731 Met		583	608 Met		805	819 Met	
2004-5	741	748 Met		624	629 Met		825	836 Met	
2005-6	749	741 NotMet	680	629	619 NotMet	609	836	844 Met	755
2006-7	727	755 Met	689	608	646 Met	621	826	840 Met	765
2007-8	755	753 NotMet	702	646	637 NotMet	638	840	840 Met	776
2008-9	753	759 Met	713	637	645 Met	651	840	859 Met	788
2009-10	762	771 Met	729	648	686 Met	672	861	858 Met	801
2010-11	771	776 Met	741	686	708 Met	688	858	870 Met	809



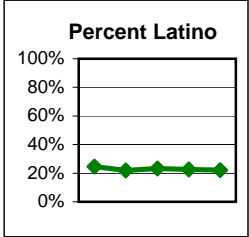
Increase Participation Across Demographic Spectrum in Advanced Courses (Percent of Students in Category)

GATE (percent of all GATE students, Aeries 12-2010)	Latino		White		All Others	
	Number	Percent	Number	Percent	Number	Percent
2003-4	56	20.7%	194	71.6%	21	7.7%
2004-5	53	12.4%	328	77.0%	45	10.6%
2005-6	88	15.3%	434	75.2%	55	9.5%
2006-7	88	15.5%	425	74.7%	56	9.8%
2007-8	85	16.1%	390	73.7%	54	10.2%
2008-9	85	17.2%	359	72.7%	50	10.1%
Note: In 2010 ethnicity/race definitions changed					Non-Latino	
2009-10	74	16.9%			364	83.1%
2010-11	66	16.3%			339	83.7%
2011-12	58	16.3%			297	83.7%

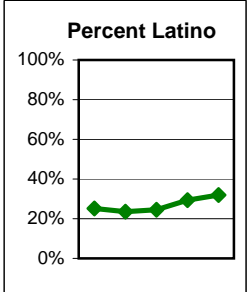


San Marcos High Continued

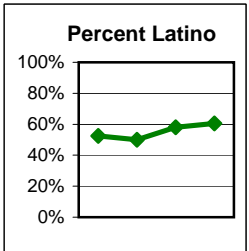
AP (Number taking at least 1 class, Aeries 12-2010 for 2009-10 year)	Latino		White		All Others	
	Number	Percent	Number	Percent	Number	Percent
2006-7	106	24.7%	281	65.3%	43	10.0%
2007-8	99	21.9%	309	68.4%	44	9.7%
2008-9	104	23.2%	294	65.5%	51	11.4%
Note: In 2010 ethnicity/race definitions changed					Non-Latino	
2009-10	105	22.6%			359	77.4%
2010-11	88	22.2%			308	77.8%



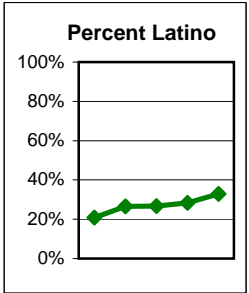
Honors (Number taking at least 1 class)	Latino		White		All Others	
	Number	Percent	Number	Percent	Number	Percent
2006-7	243	25.2%	632	65.5%	90	9.3%
2007-8	210	23.5%	598	67.0%	84	9.4%
2008-9	200	24.6%	534	65.6%	80	9.8%
Note: In 2010 ethnicity/race definitions changed					Non-Latino	
2009-10	243	29.4%			584	70.6%
2010-11	265	31.9%			565	68.1%



Health Academy (Number taking at least 1 class)	Latino		White		All Others	
	Number	Percent	Number	Percent	Number	Percent
2007-8	42	52.5%	31	38.8%	7	8.8%
2008-9	44	50.0%	36	40.9%	8	9.1%
Note: In 2010 ethnicity/race definitions changed					Non-Latino	
2009-10	54	58.1%			39	41.9%
2010-11	55	60.4%			36	39.6%



Dual Enrollment (Number taking at least 1 class; SBCC on campus or at SBCC; Aeries)	Latino		White		All Others	
	Number	Percent	Number	Percent	Number	Percent
2006-7	57	20.8%	185	67.5%	32	11.7%
2007-8	81	26.5%	197	64.4%	28	9.2%
2008-9	76	26.8%	186	65.5%	22	7.7%
Note: In 2010 ethnicity/race definitions changed					Non-Latino	
2009-10	127	28.4%			320	71.6%
2010-11	104	32.9%			212	67.1%



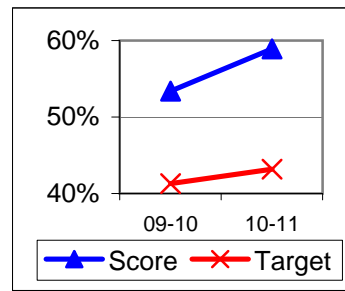
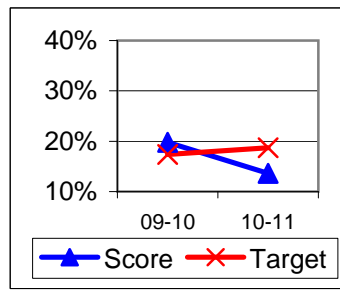
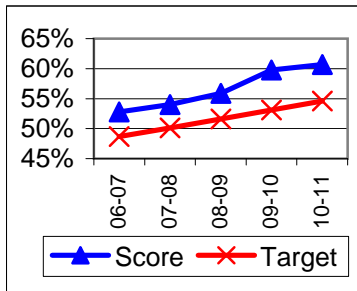
Progress on English Learners Gaining One Proficiency Level Annually and Attaining English Language Proficiency

Taken from DataQuest	AMAO 1 Gained one Level on CELDT		AMAO 2 Gained English Proficiency			
	Target	Score	Target	Score	Target	Score
03-04	51.0%		30.0%			
04-05	51.5%	72.0%	30.7%	37.9%		
05-06	52.0%	74.9%	31.4%	47.2%		
06-07	48.7%	52.8%	27.2%	19.8%	New Norms	
07-08	50.1%	54.0%	28.9%	27.0%		
08-09	51.6%	55.9%	30.6%	21.6%		
			Less than 5 years cohort		Greater than 5 years cohort	
09-10	53.1%	59.8%	17.4%	19.8%	41.3%	53.4%
10-11	54.6%	60.7%	18.7%	13.6%	43.2%	58.9%

AMAO 1

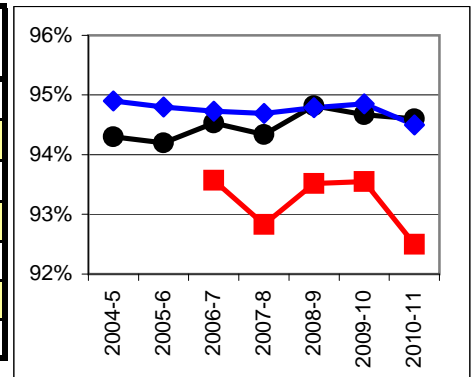
AMAO 2 < 5 years

AMAO 2 > 5 years



Increase Efforts to Enhance Revenue

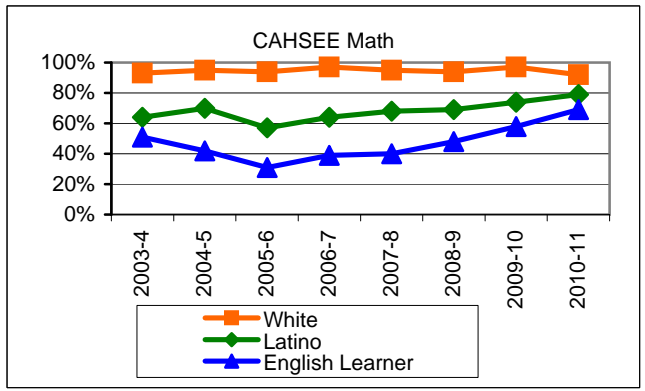
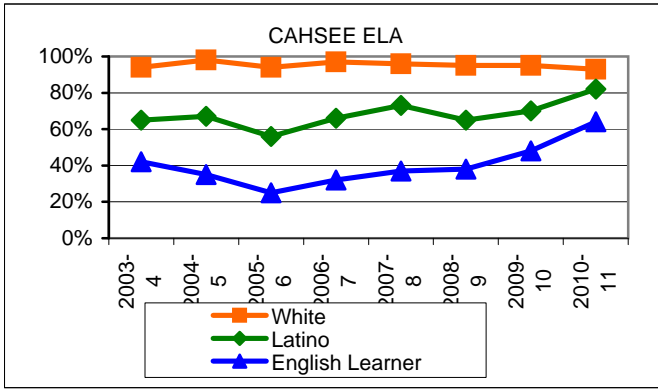
Attendance (Percent over year) (Attendance Office)	Lowest Month	Whole Year	District Sr.H.
2004-5		94.3%	94.9%
2005-6		94.2%	94.8%
2006-7	93.6%	94.5%	94.7%
2007-8	92.8%	94.3%	94.7%
2008-9	93.5%	94.8%	94.8%
2009-10	93.6%	94.7%	94.9%
2010-11	92.5%	94.6%	94.5%



San Marcos High Continued
Preparing Students to Pass the High School Exit Exam (CAHSEE)

English Language Arts (ELA), March and May in that year, 10th grade only, California cut points (dataquest)	School wide	Latino	White	Socio-Econ Disadv	English Learner	Stud with Disab	State wide
2003-4	82.0%	65.0%	94.0%	63.0%	42.0%	41.0%	75.0%
2004-5	84.0%	67.0%	98.0%	56.0%	35.0%	52.0%	76.0%
2005-6	76.0%	56.0%	94.0%	45.0%	25.0%	23.0%	77.0%
2006-7	82.0%	66.0%	97.0%	60.0%	32.0%	44.0%	77.0%
2007-8	86.0%	73.0%	96.0%	70.0%	37.0%	56.0%	79.0%
2008-9	81.0%	65.0%	95.0%	61.0%	38.0%	57.0%	79.0%
2009-10	81.0%	70.0%	95.0%	63.0%	48.0%	31.0%	81.0%
2010-11	86.0%	82.0%	93.0%	79.0%	64.0%	51.0%	82.0%

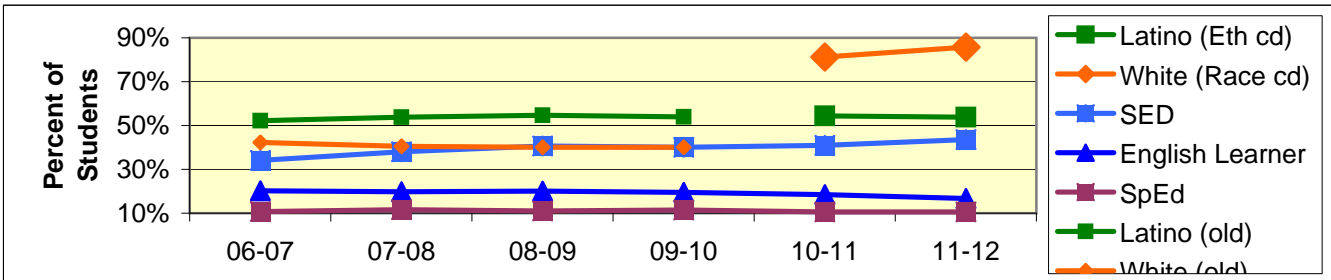
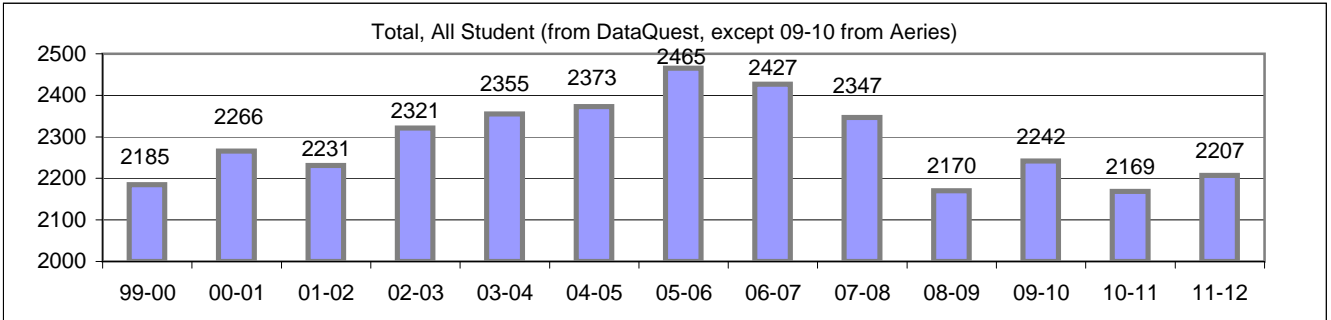
Math, March and May in that year, 10th grade only, California cut points (dataquest)	School wide	Latino	White	Socio-Econ Disadv	English Learner	Stud with Disab	State wide
2003-4	81.0%	64.0%	93.0%	62.0%	51.0%	32.0%	74.0%
2004-5	85.0%	70.0%	95.0%	59.0%	42.0%	45.0%	74.0%
2005-6	77.0%	57.0%	94.0%	50.0%	31.0%	16.0%	76.0%
2006-7	82.0%	64.0%	97.0%	60.0%	39.0%	39.0%	76.0%
2007-8	83.0%	68.0%	95.0%	64.0%	40.0%	44.0%	78.0%
2008-9	82.0%	69.0%	94.0%	69.0%	48.0%	55.0%	80.0%
2009-10	85.0%	74.0%	97.0%	72.0%	58.0%	37.0%	81.0%
2010-11	83.0%	79.0%	92.0%	79.0%	69.0%	35.0%	83.0%



Prepared by Dr. Davis Hayden, Director of Research, Evaluation, and Technology

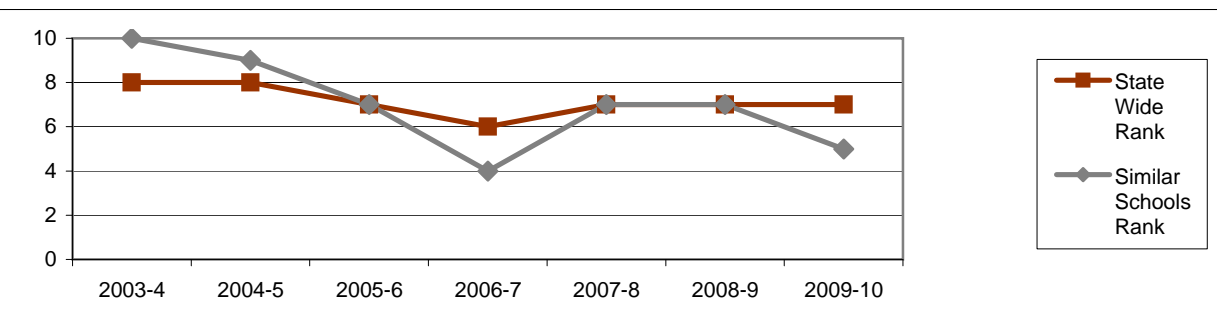
Board Focus Goals: Santa Barbara High School (4) - Sept. 2011

Demographics (9-12, Sept 7, 2011, Aeries)	Total	Female	Male	Latino (Eth cd)	White (Race cd)	SED	English Learner	SpEd
Number	2207	1081	1126	1187	1894	963	370	232
Percent of Total		49.0%	51.0%	53.8%	85.8%	43.6%	16.8%	10.5%



Achieve a State Similar School Ranking of 8 or Higher (scale = 1-10)

	State Wide Rank	Similar Schools Rank	Similar Schools Latino	Similar Schools White	Similar Schools SED	Similar Schools EL	Similar Schools Disab
2003-4	8	10	8	10	6	na	na
2004-5	8	9	5	10	4	5	7
2005-6	7	7	4	10	2	3	4
2006-7	6	4	2	10	1	2	3
2007-8	7	7	4	10	4	3	3
2008-9	7	7					
2009-10	7	5					

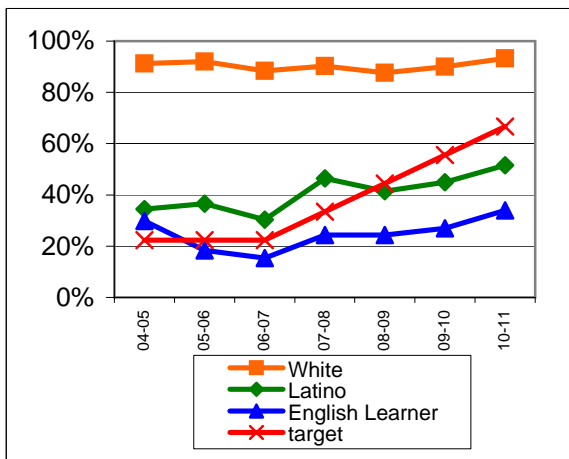


Exceed Federal Adequate Yearly Progress (AYP) Accountability Goals (Blue = Not enough students, Bold/underline/italic = Made by adjustment, Red = Did not pass (Purple = low Grad rate))

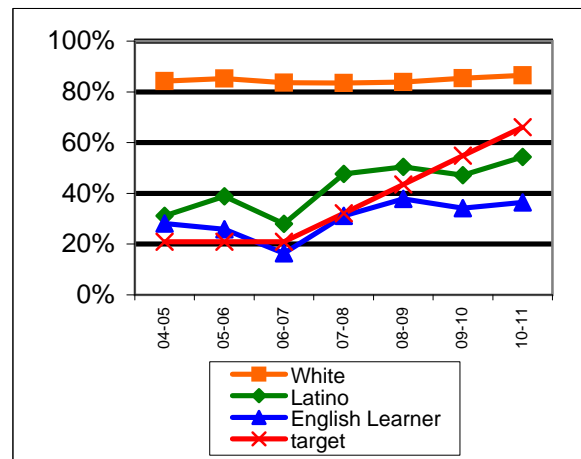
English Language Arts (ELA): Percent Proficient or Higher (Based on 10th grade Exit Exam (CAHSEE), Federal Cut Points)	State Targets	Schoolwide	Latino	White	Socio-Econ Disadv	English Learner	Stud with Disab	
04-05	22.3%	60.2%	34.4%	91.2%	30.4%	29.8%	14.5%	
05-06	22.3%	63.0%	36.6%	92.0%	28.2%	<u>18.4%</u>	10.2%	
06-07	22.3%	56.7%	30.3%	88.4%	27.1%	15.4%	10.9%	Mark 1
07-08	33.4%	67.5%	46.5%	90.2%	43.0%	24.4%	7.0%	Mark 2
08-09	44.5%	62.3%	41.5%	87.7%	40.4%	24.3%	8.0%	PI Y1
09-10	55.6%	64.1%	<u>45.0%</u>	90.0%	42.0%	27.0%	2.6%	PI Y2
10-11	66.7%	70.4%	51.6%	93.3%	43.8%	34.0%	22.6%	PI Y3
State Average 2-12, 2010-11		56.2%	44.7%	72.3%	44.0%	38.7%	34.3%	
11-12	77.8%							PI Y4

Math: Percent Proficient or Higher (Based on 10th grade Exit Exam (CAHSEE), Federal Cut Points)	State Targets	Schoolwide	Latino	White	Socio-Econ Disadv	English Learner	Stud with Disab	
04-05	20.9%	55.8%	31.1%	84.2%	28.4%	28.1%	10.5%	
05-06	20.9%	60.9%	38.8%	85.2%	29.6%	25.8%	10.6%	
06-07	20.9%	53.0%	28.0%	83.6%	26.5%	<u>16.4%</u>	12.3%	
07-08	32.2%	64.6%	47.7%	83.5%	46.6%	31.1%	12.5%	Mark 1
08-09	43.5%	65.7%	50.5%	83.8%	48.7%	37.8%	13.7%	PI Y1
09-10	54.8%	64.2%	47.2%	85.4%	45.5%	34.2%	8.1%	PI Y2
10-11	66.1%	69.1%	54.4%	86.5%	49.2%	36.4%	20.4%	PI Y3
State Average 2-12, 2010-11		58.4%	49.5%	70.1%	49.0%	48.7%	36.1%	
11-12	77.4%							PI Y4

ELA

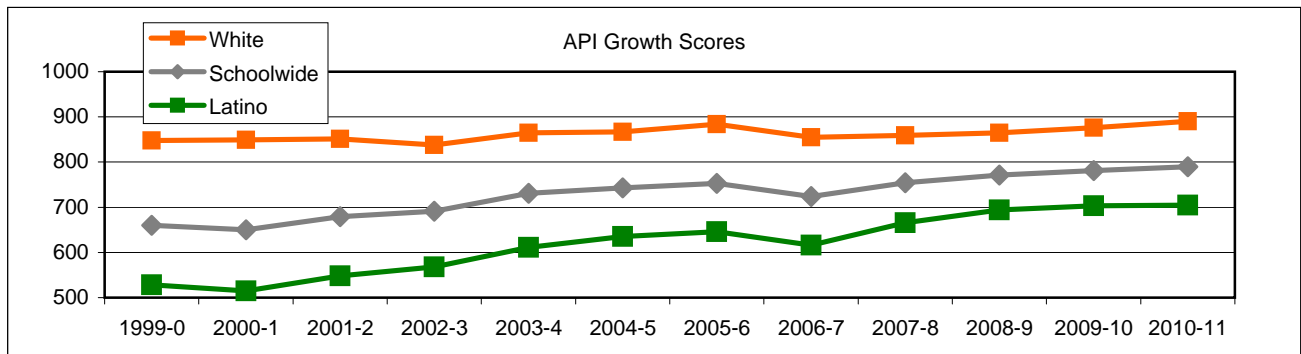


Math



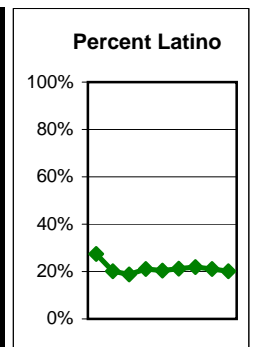
Santa Barbara High Continued
Exceed State Academic Performance Index (API) Growth Goals

	Schoolwide			Latino			White		
	Base	Growth/ Goal Met	State API (9-11)	Base	Growth/ Goal Met	State API (9-11)	Base	Growth/ Goal Met	State API (9-11)
2003-4	666	731 Met		543	611 Met		817	865 Met	
2004-5	739	743 Met		621	635 Met		869	867 Met	
2005-6	743	753 Met	680	635	646 Met	609	868	884 Met	755
2006-7	737	724 NotMet	689	630	616 NotMet	621	866	855 Met	765
2007-8	724	754 Met	702	616	666 Met	638	855	859 Met	776
2008-9	754	771 Met	713	666	694 Met	651	859	865 Met	788
2009-10	770	781 Met	729	696	703 Met	672	869	876 Met	801
2010-11	780	790 Met	741	702	705 NotMet	688	876	890 Met	809



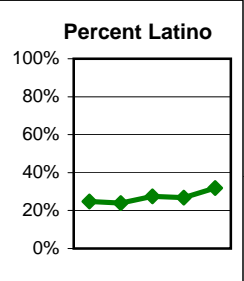
**Increase Participation Across Demographic Spectrum in Advanced Courses
 (Percent of Students in Category)**

GATE (percent of all GATE students, Aeries 9-2011)	Latino		White		All Others	
	Number	Percent	Number	Percent	Number	Percent
2003-4	78	27.4%	186	65.3%	21	7.4%
2004-5	98	20.1%	353	72.5%	36	7.4%
2005-6	112	18.8%	442	74.0%	43	7.2%
2006-7	124	21.0%	424	71.9%	42	7.1%
2007-8	114	20.4%	401	71.6%	45	8.0%
2008-9	106	21.2%	357	71.3%	38	7.6%
Note: In 2010 ethnicity/race definitions changed					Non-Latino	
2009-10	106	21.9%			377	78.1%
2010-11	87	21.1%			326	78.9%
2011-12	78	20.1%			310	79.9%

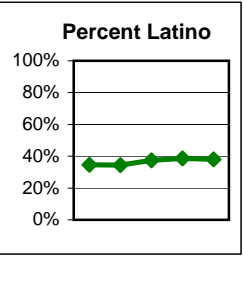


Santa Barbara High Continued

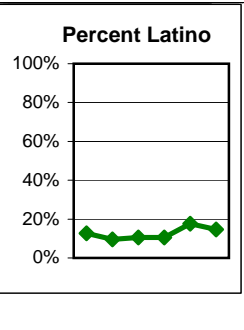
AP (Number taking at least 1 class, Aeries 9-2011 for 2010-11 year)	Latino		White		All Others	
	Number	Percent	Number	Percent	Number	Percent
2006-7	146	24.9%	400	68.1%	41	7.0%
2007-8	136	23.9%	395	69.4%	38	6.7%
2008-9	145	27.5%	352	66.7%	31	5.9%
Note: In 2010 ethnicity/race definitions changed					Non-Latino	
2009-10	128	26.8%			350	73.2%
2010-11	167	31.8%			358	68.2%



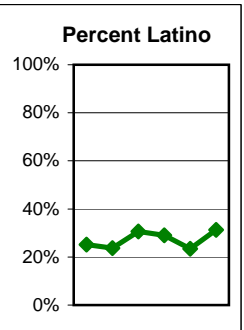
Honors (Number taking at least 1 class)	Latino		White		All Others	
	Number	Percent	Number	Percent	Number	Percent
2006-7	491	34.7%	846	59.7%	80	5.6%
2007-8	466	34.5%	794	58.7%	92	6.8%
2008-9	483	37.4%	730	56.5%	78	6.0%
Note: In 2010 ethnicity/race definitions changed					Non-Latino	
2009-10	543	38.6%			863	61.4%
2010-11	509	38.1%			827	61.9%



MAD Academy (Number taking at least 1 class)	Latino		White		All Others	
	Number	Percent	Number	Percent	Number	Percent
2006-7	20	12.7%	134	85.4%	3	1.9%
2007-8	14	9.6%	130	89.0%	2	1.4%
2008-9	13	10.5%	107	86.3%	4	3.2%
Note: In 2010 ethnicity/race definitions changed					Non-Latino	
2009-10	17	10.6%			144	89.4%
2010-11	29	17.6%			136	82.4%
2011-12	32	14.7%			186	85.3%



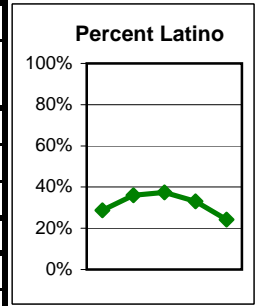
VADA Academy (Number taking at least 1 class)	Latino		White		All Others	
	Number	Percent	Number	Percent	Number	Percent
2006-7	62	25.2%	171	69.5%	13	5.3%
2007-8	57	23.8%	171	71.3%	12	5.0%
2008-9	78	30.6%	165	64.7%	12	4.7%
Note: In 2010 ethnicity/race definitions changed					Non-Latino	
2009-10	82	29.1%			200	70.9%
2010-11	40	23.4%			131	76.6%
2011-12	52	31.3%			114	68.7%



GREEN (Number taking at least 1 class) (Not Available Yet)	Latino		White		All Others	
	Number	Percent	Number	Percent	Number	Percent

Santa Barbara High Continued

Dual Enrollment (Number taking at least 1 class; SBCC on campus or at SBCC; Aeries)	Latino		White		All Others	
	Number	Percent	Number	Percent	Number	Percent
2006-7	186	28.7%	428	65.9%	35	5.4%
2007-8	293	36.0%	476	58.5%	45	5.5%
2008-9	277	37.4%	425	57.4%	39	5.3%
Note: In 2010 ethnicity/race definitions changed					Non-Latino	
2009-10	256	33.0%			519	67.0%
2010-11	228	24.3%			712	75.7%



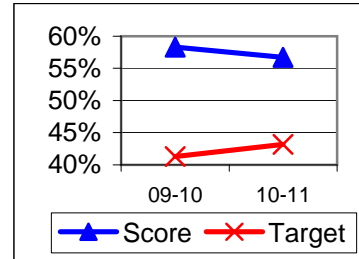
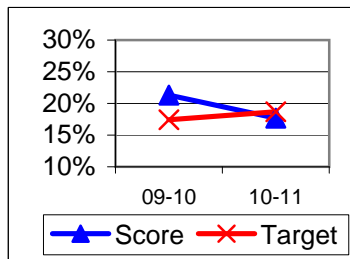
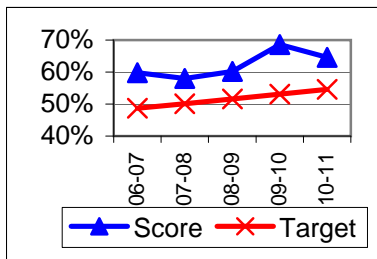
Progress on English Learners Gaining One Proficiency Level Annually and Attaining English Language Proficiency

Taken from DataQuest	AMAO 1 Gained one Level on CELDT		AMAO 2 English Proficiency		Gained	
	Target	Score	Target	Score	Target	Score
03-04	51.0%		30.0%			
04-05	51.5%	82.8%	30.7%	56.8%		
05-06	52.0%	76.8%	31.4%	43.3%		
06-07	48.7%	59.8%	27.2%	35.3%	New Norms	
07-08	50.1%	58.0%	28.9%	29.0%		
08-09	51.6%	60.2%	30.6%	34.7%		
			Less than 5 years cohort		Greater than 5 years cohort	
09-10	53.1%	68.6%	17.4%	21.3%	41.3%	58.3%
10-11	54.6%	64.6%	18.7%	17.7%	43.2%	56.7%

AMAO 1

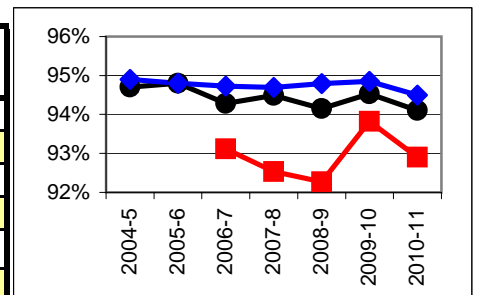
AMAO 2 < 5 years

AMAO 2 > 5 years



Increase Efforts to Enhance Revenue

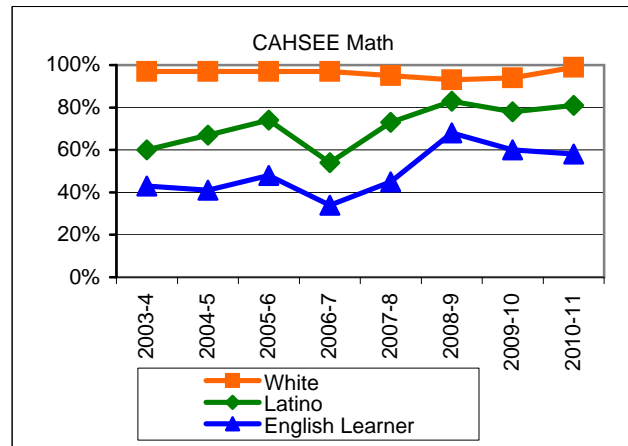
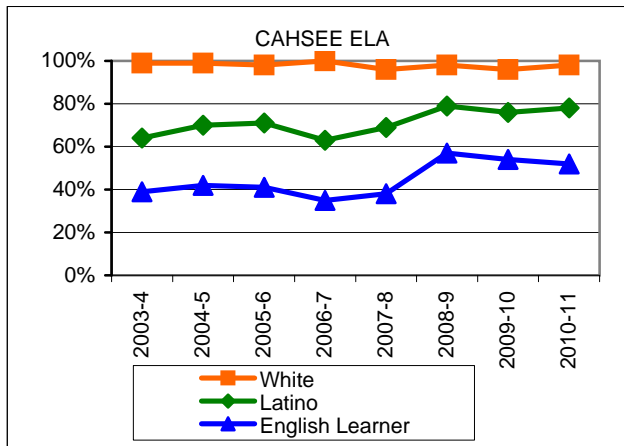
Attendance (Percent over year) (Attendance Office)	Lowest Month	Whole Year	District Sr.H.
2004-5		94.7%	94.9%
2005-6		94.8%	94.8%
2006-7	93.1%	94.3%	94.7%
2007-8	92.5%	94.5%	94.7%
2008-9	92.3%	94.2%	94.8%
2009-10	93.8%	94.5%	94.9%
2010-11	92.9%	94.1%	94.5%



Preparing Students to Pass the High School Exit Exam (CAHSEE)

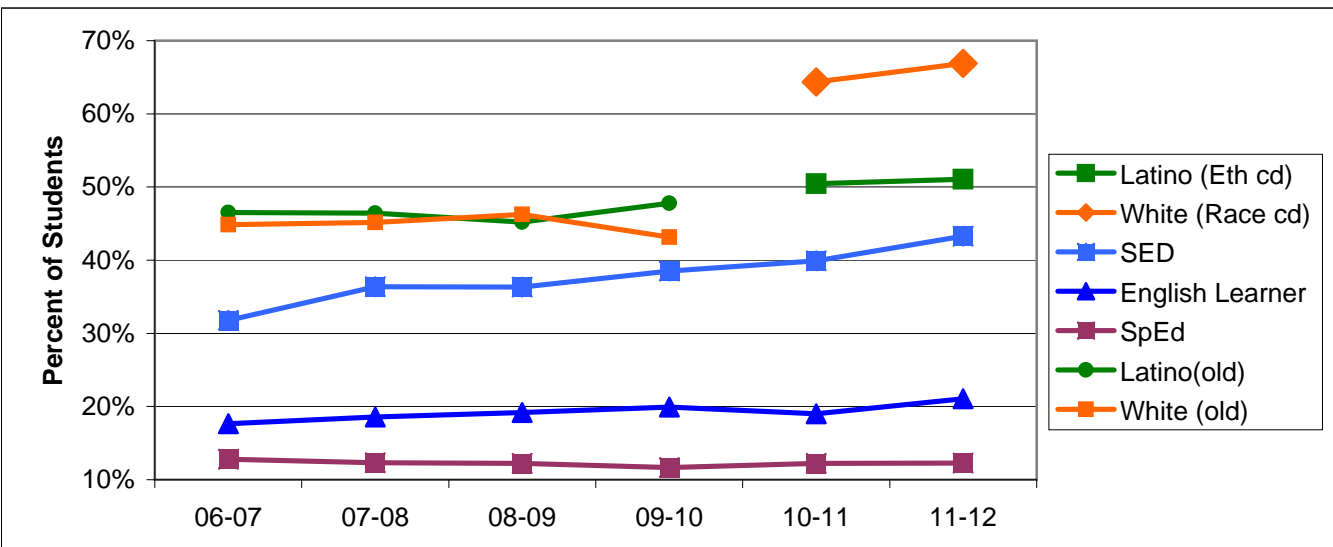
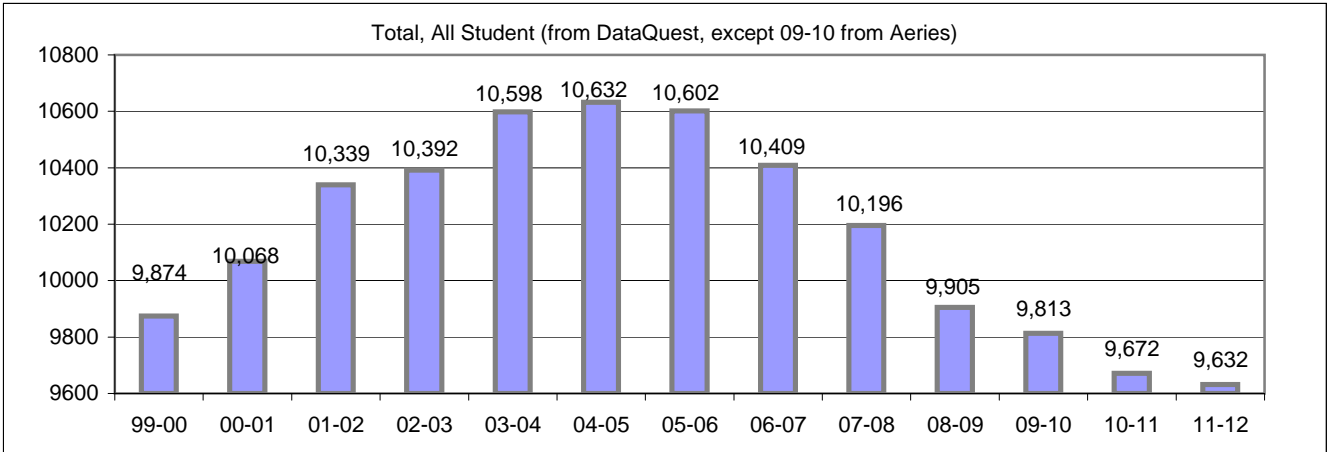
English Language Arts (ELA), March and May in that year, 10th grade only, California cut points (dataquest)	School wide	Latino	White	Socio-Econ Disadv	English Learner	Stud with Disab	State wide
2003-4	82.0%	64.0%	99.0%	57.0%	39.0%	48.0%	75.0%
2004-5	83.0%	70.0%	99.0%	64.0%	42.0%	40.0%	76.0%
2005-6	84.0%	71.0%	98.0%	66.0%	41.0%	37.0%	77.0%
2006-7	79.0%	63.0%	100.0%	63.0%	35.0%	36.0%	77.0%
2007-8	82.0%	69.0%	96.0%	68.0%	38.0%	38.0%	79.0%
2008-9	87.0%	79.0%	98.0%	78.0%	57.0%	48.0%	79.0%
2009-10	85.0%	76.0%	96.0%	72.0%	54.0%	35.0%	81.0%
2010-11	87.0%	78.0%	98.0%	73.0%	52.0%	47.0%	82.0%

Math, March and May in that year, 10th grade only, California cut points (dataquest)	School wide	Latino	White	Socio-Econ Disadv	English Learner	Stud with Disab	State wide
2003-4	79.0%	60.0%	97.0%	59.0%	43.0%	25.0%	74.0%
2004-5	80.0%	67.0%	97.0%	61.0%	41.0%	26.0%	74.0%
2005-6	85.0%	74.0%	97.0%	68.0%	48.0%	33.0%	76.0%
2006-7	73.0%	54.0%	97.0%	55.0%	34.0%	25.0%	76.0%
2007-8	83.0%	73.0%	95.0%	71.0%	45.0%	38.0%	78.0%
2008-9	87.0%	83.0%	93.0%	82.0%	68.0%	29.0%	80.0%
2009-10	86.0%	78.0%	94.0%	76.0%	60.0%	36.0%	81.0%
2010-11	89.0%	81.0%	99.0%	77.0%	58.0%	49.0%	83.0%



Board Focus Goals: Secondary District - Sept. 2011

Demographics (9-12, 9-07-2011, Aeries)	Total	Female	Male	Latino (Eth cd)	White (Race cd)	SED	English Learner	SpEd
Number	9632	4682	4950	4919	6442	4170	2030	1182
Percent of Total		48.6%	51.4%	51.1%	66.9%	43.3%	21.1%	12.3%



Secondary District Continued

Exceed Federal Adequate Yearly Progress (AYP) Accountability Goals (Blue = Not enough students, Bold/underline/italic = Made by adjustment, Red = Did not pass

enough students, Bold/underline/italic = Made by adjustment, Red = Did not pass

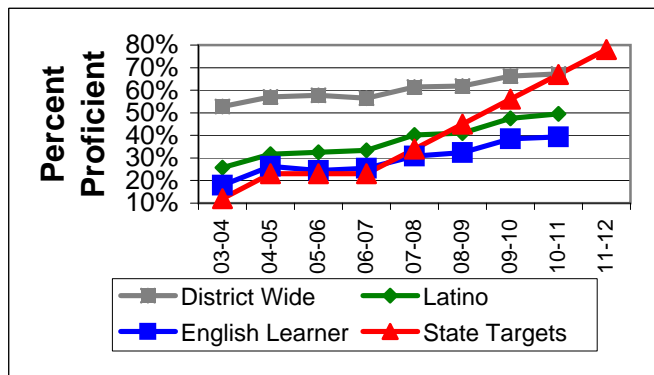
English Language Arts (ELA): Percent Proficient or Higher (Based on 7-8th grade CST and 10th grade Exit Exam (CAHSEE), Federal Cut Points)	State Targets	District Wide	Latino	White	Socio-Econ Disadv	English Learner	Stud with Disab	
03-04	12.0%	52.8%	25.7%	78.1%	22.1%	18.0%	12.8%	
04-05	23.0%	57.0%	31.7%	80.1%	28.0%	26.3%	17.2%	
05-06	23.0%	57.7%	32.5%	81.1%	27.6%	24.4%	12.8%	
06-07	23.0%	56.5%	33.4%	81.7%	30.7%	25.4%	14.5%	GS OK
07-08	34.0%	61.5%	40.2%	83.3%	37.4%	30.9%	17.8%	GS OK
08-09	45.0%	61.9%	41.0%	82.8%	39.7%	32.4%	25.4%	GS OK
09-10	56.0%	66.2%	47.5%	86.6%	43.8%	38.5%	31.5%	GS OK
10-11	67.0%	67.2%	49.6%	87.6%	45.3%	39.4%	32.4%	GS OK
State Average 2-12, 2010-11		56.2%	44.7%	72.3%	44.0%	38.7%	34.3%	
11-12	78.0%							GS OK

(GS = Grade Span)

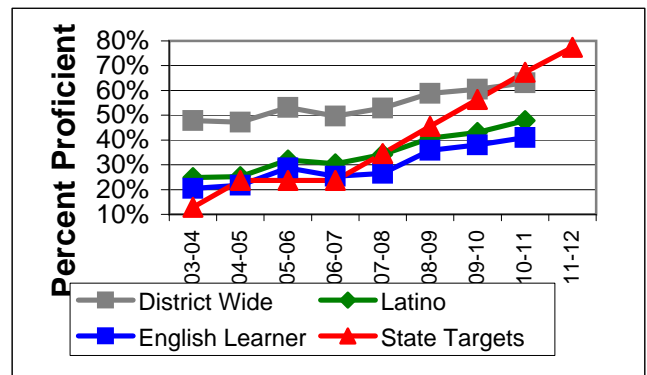
Math: Percent Proficient or Higher (Based on 7-8th grade CST and 10th grade Exit Exam (CAHSEE), Federal Cut Points)	State Targets	District Wide	Latino	White	Socio-Econ Disadv	English Learner	Stud with Disab	
03-04	12.8%	47.8%	24.9%	68.5%	23.1%	20.4%	11.8%	
04-05	23.7%	47.2%	25.3%	66.8%	22.5%	21.8%	15.5%	
05-06	23.7%	53.1%	32.0%	71.7%	30.0%	28.7%	13.8%	
06-07	23.7%	49.6%	30.4%	70.0%	29.2%	25.4%	13.8%	
07-08	34.6%	52.9%	34.2%	70.7%	33.6%	26.5%	16.0%	GS OK
08-09	45.5%	58.8%	40.8%	76.1%	39.7%	35.8%	22.7%	GS OK
09-10	56.4%	60.5%	43.1%	78.9%	40.6%	38.0%	24.5%	GS OK
10-11	67.3%	63.1%	47.8%	80.0%	44.8%	41.0%	25.5%	GS OK
State Average 2-12, 2010-11		58.4%	49.5%	70.1%	49.0%	48.7%	36.1%	
11-12	77.4%							GS OK

(GS = Grade Span)

ELA



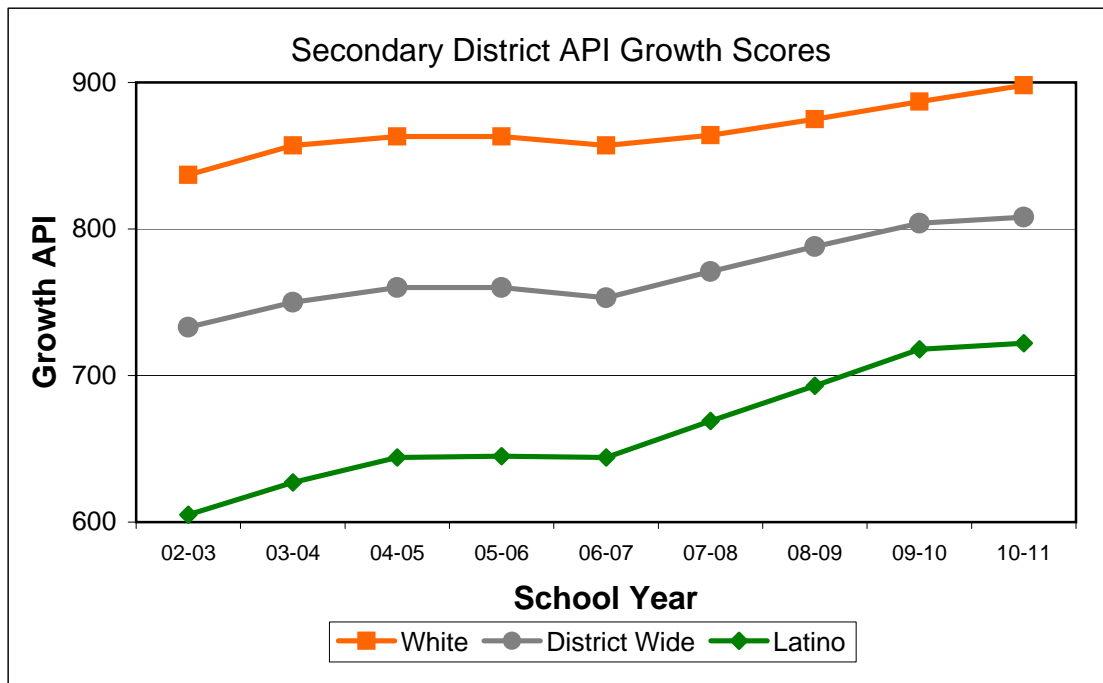
Math



Secondary District Continued

Exceed State Academic Performance Index (API) Growth Goals

	District Wide			Latino			White		
	Base	Growth/ Goal Met	State API (2-11)	Base	Growth/ Goal Met	State API (2-11)	Base	Growth/ Goal Met	State API (2-11)
2003-4	716	750		585	627		824	857	
2004-5	756	760		636	644		859	863	
2005-6	760	760	720	644	645	654	863	863	801
2006-7	757	753	728	642	644	665	857	857	805
2007-8	753	771	742	644	669	683	857	864	816
2008-9	775	788	755	674	693	698	864	875	828
2009-10	786	804	767	693	718	715	875	887	838
2010-11	804	808	778	718	722	729	887	898	844



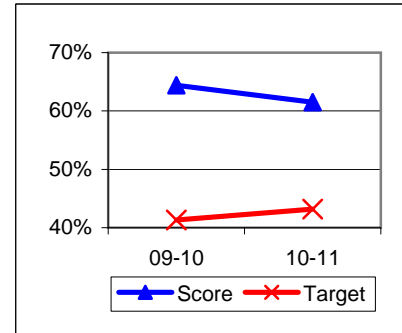
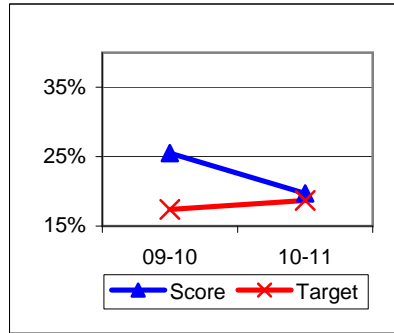
Progress on English Learners Gaining One Proficiency Level Annually and Attaining English Language Proficiency

Taken from DataQuest	AMAO 1 Gained one Level on CELDT		AMAO 2 English Proficiency Gained			
	Target	Score	Target	Score	Target	Score
03-04	51.0%	78.6%	30.0%	56.9%		
04-05	51.5%	80.2%	30.7%	53.0%		
05-06	52.0%	78.4%	31.4%	53.0%		
06-07	48.7%	60.7%	27.2%	29.8%	New Norms	
07-08	50.1%	61.5%	28.9%	33.5%		
08-09	51.6%	66.6%	30.6%	35.5%		
			Less than 5 years cohort		Greater than 5 years cohort	
09-10	53.1%	72.4%	17.4%	25.5%	41.3%	64.4%
10-11	54.6%	66.9%	18.7%	19.7%	43.2%	61.5%

AMAO 1

AMAO 2 < 5 years

AMAO 2 > 5 years

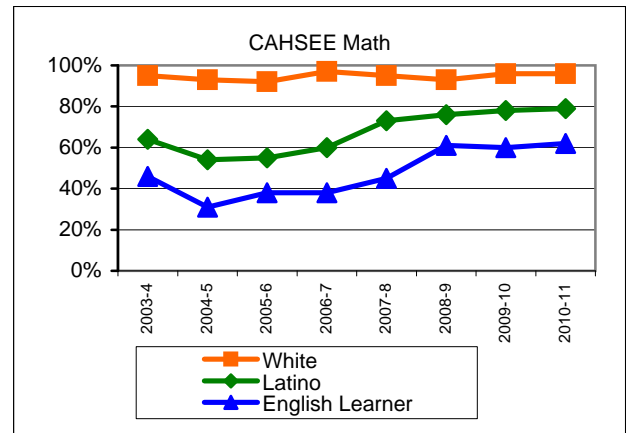
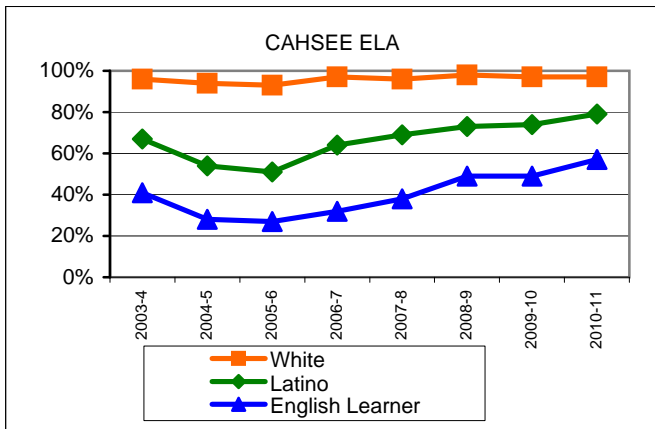


Secondary District Continued

Preparing Students to Pass the High School Exit Exam (CAHSEE)

English Language Arts (ELA), March and May in that year, 10th grade only, California cut points (dataquest)	School wide	Latino	White	Socio-Econ Disadv	English Learner	Stud with Disab	State wide
2003-4	83.0%	67.0%	96.0%	62.0%	41.0%	48.0%	75.0%
2004-5	74.0%	54.0%	94.0%	47.0%	28.0%	37.0%	76.0%
2005-6	69.0%	51.0%	93.0%	44.0%	27.0%	33.0%	77.0%
2006-7	82.0%	64.0%	97.0%	61.0%	32.0%	44.0%	77.0%
2007-8	84.0%	69.0%	96.0%	68.0%	38.0%	38.0%	79.0%
2008-9	86.0%	73.0%	98.0%	71.0%	49.0%	57.0%	79.0%
2009-10	86.0%	74.0%	97.0%	68.0%	49.0%	38.0%	81.0%
2010-11	88.0%	79.0%	97.0%	75.0%	57.0%	48.0%	82.0%

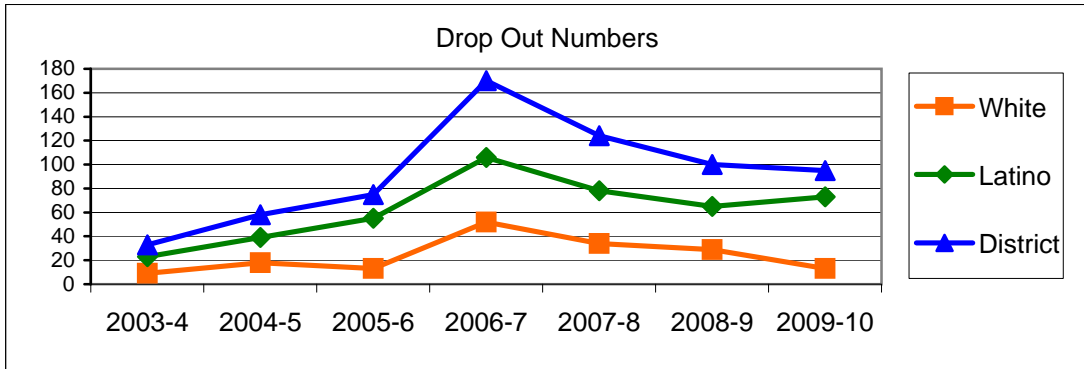
Math, March and May in that year, 10th grade only, California cut points (dataquest)	School wide	Latino	White	Socio-Econ Disadv	English Learner	Stud with Disab	State wide
2003-4	82.0%	64.0%	95.0%	63.0%	46.0%	37.0%	74.0%
2004-5	73.0%	54.0%	93.0%	47.0%	31.0%	32.0%	74.0%
2005-6	71.0%	55.0%	92.0%	50.0%	38.0%	30.0%	76.0%
2006-7	79.0%	60.0%	97.0%	59.0%	38.0%	35.0%	76.0%
2007-8	83.0%	73.0%	95.0%	71.0%	45.0%	38.0%	78.0%
2008-9	86.0%	76.0%	93.0%	76.0%	61.0%	48.0%	80.0%
2009-10	88.0%	78.0%	96.0%	75.0%	60.0%	43.0%	81.0%
2010-11	87.0%	79.0%	96.0%	77.0%	62.0%	41.0%	83.0%



Secondary District Continued

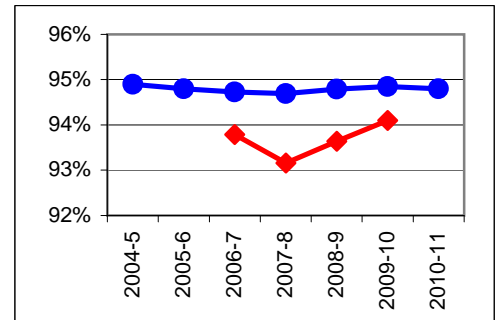
Drop out rates for High Schools (grades 9-12 from Dataquest; Percent includes lost transfers)	State Percent	District Percent	District	Latino	White
2003-4			33	23	9
2004-5			58	39	18
2005-6			75	55	13
2006-7	21.1%	11.1%	170	106	52
2007-8	18.9%	11.6%	124	78	34
2008-9	21.5%	9.6%	100	65	29
2009-10	17.7%	9.9%	95	73	13

(New coding)
New from Data Quest



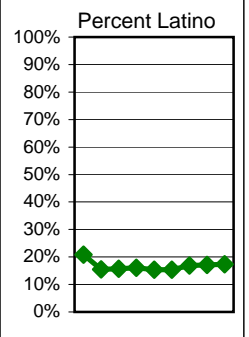
Increase Efforts to Enhance Revenue

Attendance (Percent over year) (Attendance Office)	Lowest Month	District
2004-5		94.9%
2005-6		94.8%
2006-7	93.8%	94.7%
2007-8	93.2%	94.7%
2008-9	93.6%	94.8%
2009-10	94.1%	94.9%
2010-11		94.8%

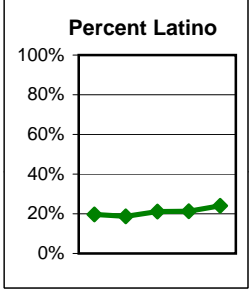


Increase Participation Across Demographic Spectrum in Advanced Courses (Percent of Students in Category)

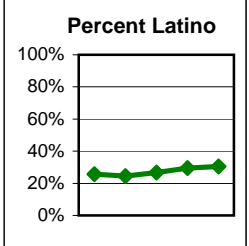
GATE (percent of all GATE students grades 7-12, Aeries 12-)	Latino		White		All Others	
	Number	Percent	Number	Percent	Number	Percent
2003-4	283	20.8%	935	68.7%	143	10.5%
2004-5	338	15.5%	1614	73.8%	234	10.7%
2005-6	406	15.7%	1889	73.1%	290	11.2%
2006-7	416	16.0%	1872	72.2%	304	11.7%
2007-8	381	15.4%	1803	72.6%	298	12.0%
2008-9	364	15.3%	1716	72.2%	297	12.5%
Note: In 2010 ethnicity/race definitions changed					Non-Latino	
2009-10	362	16.9%			1779	83.1%
2010-11	363	17.2%			1753	82.8%
2011-12	350	17.3%			1669	82.7%



AP (Number taking at least 1 class, Aeries 12-2010 for 2009-10 year)	Latino		White		All Others	
	Number	Percent	Number	Percent	Number	Percent
2006-7	320	19.6%	1129	69.3%	181	11.1%
2007-8	299	18.6%	1119	69.7%	187	11.7%
2008-9	340	21.1%	1084	67.3%	187	11.6%
Note: In 2010 ethnicity/race definitions changed					Non-Latino	
2009-10	333	21.3%			1229	78.7%
2010-11	392	24.1%			1237	75.9%

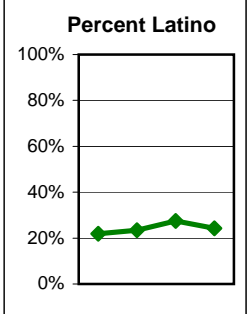


Honors (Number taking at least 1 class in High School)	Latino		White		All Others	
	Number	Percent	Number	Percent	Number	Percent
2006-7	894	25.7%	2249	64.6%	336	9.7%
2007-8	805	24.4%	2147	65.1%	344	10.4%
2008-9	857	26.6%	2038	63.3%	325	10.1%
Note: In 2010 ethnicity/race definitions changed					Non-Latino	
2009-10	1001	29.4%			2405	70.6%
2010-11	1032	30.4%			2362	69.6%



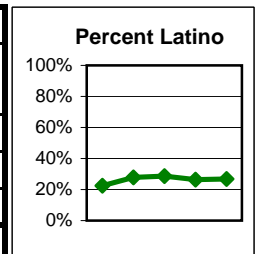
Secondary School District Continued

Academies (IB, Health, MAD, VADA; more to be added as data is usable)	Latino		White		All Others	
	Number	Percent	Number	Percent	Number	Percent
2003-4						
2004-5						
2005-6						
2006-7						
2007-8	138	21.9%	452	71.9%	39	6.2%
2008-9	151	23.5%	439	68.3%	53	8.2%
2009-10	157	27.4%			415	72.6%
2010-11	142	24.3%			442	75.7%



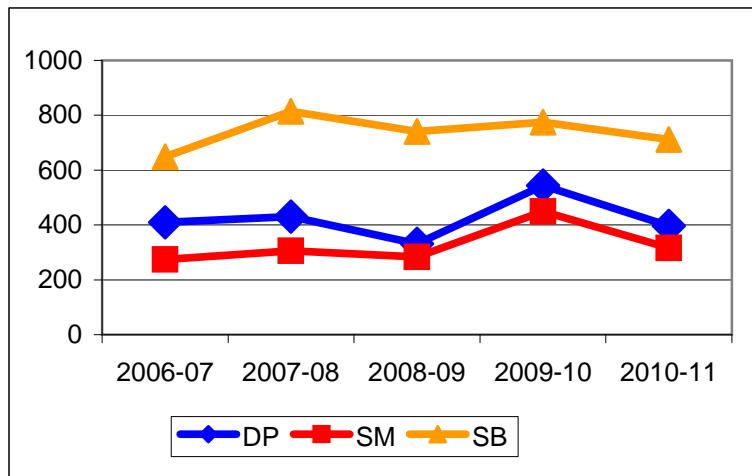
Secondary District Continued

Dual Enrollment (Number taking at least 1 class; SBCC on campus or at SBCC; Aeries)	Latino		White		All Others	
	Number	Percent	Number	Percent	Number	Percent
2006-7	301	22.5%	909	68.0%	126	9.4%
2007-8	431	27.7%	973	62.6%	150	9.7%
2008-9	392	28.6%	839	61.2%	140	10.2%
Note: In 2010 ethnicity/race definitions changed					Non-Latino	
2009-10	473	26.4%			1319	73.6%
2010-11	390	26.7%			1069	73.3%



Santa Barbara City College Dual Enrollment By School (Number taking at least one course)

Year	DP	SM	SB
2006-07	409	274	649
2007-08	430	306	814
2008-09	331	284	741
2009-10	544	449	775
2010-11	397	316	712



Prepared by Dr. Davis Hayden, Director of Research, Evaluation, and Technology